

# Almanac

Tuesday,  
July 15, 2003  
Volume 50 Number 1  
[www.upenn.edu/almanac](http://www.upenn.edu/almanac)



Carol Spigner



Joseph McBride



Arthur Schwartz

Penn, he has held faculty positions at the University of Chicago, the University of Maryland and recently he was the Scholar-in-Residence and Professor at the Center for Social Work Education, Widener University. Dr. Schwartz has consulted around the world on social work practice and mental health treatment issues. In addition, he has been a visiting lecturer at major universities in the U.S. and abroad.

He has authored and co-authored many articles and book chapters. His books include *Depression, Theories and Treatments: Psychological, Biological and Social Perspectives*, (with Ruth M. Schwartz); *The Behavior Therapies*; and *Social Casework: A Behavioral Approach* (with Israel Goldiamond).

## Social Work Teaching Awards

The 2003 recipients of the School of Social Work's Excellence in Teaching Awards are Dr. Carol Wilson Spigner, a member of the standing faculty; Joseph McBride, and Dr. Arthur Schwartz, members of the part-time faculty.

The awards were presented at the School's commencement ceremony. Recipients of the Excellence in Teaching Awards are selected by graduating students and must demonstrate a high level of scholarship in the course(s) taught; a teaching style that stimulates the students' interest; a commitment to student learning; respect for students' personal differences; and a significant and lasting impact on the professional development of students.

*Dr. Carol W. Spigner*, received her undergraduate degree from the University of California at Riverside and her graduate and postgraduate degrees from the University of Southern California. She came to Penn in July, 1999 as a visiting professor and joined the faculty permanently in September, 2000 when she was named the Kenneth L. M. Pray Distinguished Professor. Prior to her arrival, Dr. Spigner had been the associate commissioner of the Children's Bureau at the U.S. Department of Health and Human Services' Administration for Children and Families where she was responsible for the administration of federal child welfare programs.

*Joseph McBride*, is a part-time lecturer at SSW, where he teaches *Foundations of Social Work Practice*, and *Practice with Children and Adolescents*. He is past director of social work and training director at Philadelphia Child Guidance Center. Mr. McBride has extensive consulting and teaching experience in family therapy, grief, chronic illness, parenting issues, private practice in social work, and social work supervision. He also worked on both the landmark NIH Diabetes Control and Complications Trial and the Diabetes Prevention Trial. His publications include articles on funeral homes, grief therapy and diabetes.

*Dr. Arthur Schwartz* received his graduate degree from the Boston University School of Social Work and his Ph.D. from Columbia University. In addition to his teaching at

## Ombudsman: Dr. Pope

Dr. David Pope, professor of materials science and engineering in the School of Engineering and Applied Science, has agreed to serve as the University's Ombudsman, effective July 1, 2003 for a two-year term, President Judith Rodin recently announced. Dr. Pope will succeed Dr. Anita Summers, who served a two-year term. "Anita has done an extraordinary job and we are very grateful," President Rodin added.

"Dave's broad knowledge of the University, excellent judgment, and wisdom, as well as his history of engagement as a University citizen, equip him to provide great service to the Penn community," said Dr. Rodin.

Dr. Pope has served on numerous University initiatives, including co-chairing the Academic Integrity Task Force in 2001, co-chairing the joint University Council/Provost Committee on Assessing the Evaluation of Teaching during 2001-02, and served as chair of the Committee on Residential Planning in 1997, the committee that selected the first group of House Deans for the then newly-created College House system. He also received the S. Reid Warren Teaching Award from the SEAS undergraduates in 2000.

Dr. Pope joined the faculty in 1968 and has served as chair of both the departments of Materials Science and Engineering and of Mechanical Engineering and Applied Mechanics, as well as two terms as associate dean for Undergraduate Education in SEAS.



David Pope

## President Rodin: Stepping Down in June 2004



Judith Rodin

Dr. Judith Rodin, president since 1994, announced that she intends to step down from the office when she completes her 10-year term in June 2004. The June 20 announcement came following the meeting of the full Board of Trustees.

"Serving Penn these past years has been an extraordinary privilege and an exhilarating experience," Dr. Rodin said. "This is a remark-

able community of amazing depth and breadth, and I am grateful to the Trustees for their support and for giving me the opportunity to work with so many talented and creative individuals. I am very proud of all that our faculty, staff, students, alumni and community partners have together enabled Penn to accomplish.

"The decision to step down has been an extremely difficult one for me to make, but I believe it is the right time for Penn. We have successfully fulfilled our first strategic plan and with the next plan conceived and ready to launch, it is time for the next era of leadership. I love this institution and will always remain a part of it."

"Judith Rodin simply has it all," said James Riepe, chairman of the Trustees. "Through her vision, creativity, and boundless energy, Judy has provided extraordinary leadership to Penn over these past nine years—strengthening undergraduate, graduate and professional education, revitalizing the campus and community, increasing fundraising and dramatically enhancing the University's national reputation.

"Penn today is a stronger and more vibrant institution than at any time in our history," Mr. Riepe said. "More than ever Penn is the university of choice for the nation's best and brightest students and scholars. Our physical resources have never been better, we are on firm financial

(continued on page 2)

### IN THIS ISSUE

- 2 Trustee Coverage; Alumni Reunion Gifts
- 3 Stepping Down: Dr. Sabloff, Dr. Hopey
- 4 Federal Relations: Mr. Horwich; Tax Rate Changes; Speaking Out: Enlightened Leadership, Dual Identity; Election Results: WPSA, PPSA, Faculty Club
- 5 Deaths: Drs. Dickson; Elliott; Haselgrove; Hoenigswald; Marden; Sayen; Sloviter; Stumacher
- 6 HONORS & Other Things
- 7 Government Affairs Update
- 8 Business Services Update
- 9 Recognized Holidays; EHRs Training; Cyclists and Volunteers; HR Development; Golf Outings to Benefit Cancer Center
- 10 Triplets On Campus; Update
- 11 Telecommunications Alert; Peak at Penn's Past; Crime Stats; Classifieds
- 12 Three-Year Academic Calendar

## Stepping Down as President

(continued from page 1)

footing, and our relations with our city and community are the best they have been in decades. Penn's future is brighter than ever."

Mr. Riepe said that pursuant to the University statutes, the executive committee of the Trustees would appoint in the months ahead a presidential search committee, to be comprised of trustees, faculty, and students, which he will chair.

Mr. Riepe expressed his appreciation to Dr. Rodin for providing a full year's notice, making it unnecessary to appoint an interim president.

Dr. Rodin holds faculty appointments as a professor of psychology in SAS and as a professor of medicine and psychiatry in the School of Medicine.

Commenting on her future plans, Dr. Rodin said, "I am thrilled by Penn's extraordinary success in our neighborhood transformation efforts. America's cities need to rebuild economic infrastructures, and provide avenues for individuals to lift themselves from poverty by creating jobs and the opportunity for growth. While all city budgets are facing staggering deficits, public-private partnerships for these kinds of efforts are more important than ever. Over the years, I've been asked by mayors and foundations to help them to replicate Penn's strategies and I've never had the time. This, coupled with my teaching and writing on leadership and civic engagement, and my service on corporate and community-boards, is an overflowing agenda."

A week after the Trustees' meeting, Dr. Rodin issued the following statement, "The Trustees encouraged me to take on some part-time responsibility to help them and the new President launch the silent phase of a new fundraising campaign after I step down next year. To provide more external heft to this role in fundraising circles, they suggested the title of Chancellor. I was both honored and flattered, but on reflection I believe this may create confusion in the higher education community. Thus, I have decided not to accept the title and have informed the Board of this today. Of course, I remain committed to help in fundraising in whatever ways needed."

## Alumni Reunion Gifts 2003

Four of the reunion classes that presented their checks to President Rodin during Alumni Weekend set new records for participation in their respective reunion years including the Senior Class of 2003.

The 50th reunion gift set a record for the amount of money donated—over \$10 million, as did the 15th and 10th reunion gifts, with over \$1 million and \$2 million respectively.

\* Denotes record as of May 16, 2003

## Trustees' Meeting Coverage

At the Stated Meeting of the University Trustees' on June 20, Chairman James Riepe announced that the Hon. Marjorie Rendell would be stepping down from the Board as of that meeting, although Pennsylvania's First Lady would continue to serve as chair of the Overseers of the School of Nursing.

The Trustees approved the resolution to amend Section 10.5 of the Statutes of the Trustees concerning the "Policy for the Establishment, Merger, and Closing of Departments, Divisions, and Similar Entities Within Schools" (*Almanac* April 30, 2002) which was approved by the President, Provost and the Faculty Senate and requires trustee authorization as provided in the Statutes.

President Judith Rodin noted that the first Arts Day on May 8, conceived of by Trustee Leonard Lauder, was extremely successful. She also mentioned the high quality of the Class of 2007 and the Knowledge Industry Partnership, which was launched recently to recruit and retain students to this area.

The Trustees approved the appointment of three deans, whose resolutions were presented by Dr. Rodin: Dr. Richard Gelles as dean of the School of Social Work; Dr. Marjorie Jeffcoat as dean of the School of Dental Medicine; and Dr. Michael Delli Carpini as dean of the Annenberg School for Communication.

President Rodin also presented resolutions to appoint three of Penn's vice presidents as Senior Vice Presidents; all were approved effective June 20, 2003—Omar Blaik as Senior Vice President for Facilities and Real Estate Services; Craig Carnaroli as Senior Vice President for Finance and Treasurer; and Wendy White as Senior Vice President and General Counsel of Penn and UPHS.

Provost Robert Barchi spoke about the substantial increase in new faculty at the Law School, 15 within the last two years, many of whom hold secondary appointments in other schools at Penn adding to the interdisciplinary options. Dr. Barchi also noted that the GSE efforts to improve literacy in Philadelphia's public schools have succeeded; the schools that GSE

was involved with outperformed all the other schools in the city for reading and writing. He also mentioned KIDS, the country's first database of its kind, which is a resource created by the Center for Educational Leadership.

James Riepe was reelected as chair of the Board of Trustees for another one-year term, effective July 1, 2003-June 30, 2004. Jon Huntsman, Sr., Natalie Koether, and Michael Tamopol were reelected as vice chairs of the Trustees for the same time period.

The following trustees were elected to serve on the Executive Committee for the coming year: Madlyn Abramson, Christopher Browne, Gilbert Casellas, John Clark, David Cohen, Jon Huntsman, James Riepe, Alvin Shoemaker, Michael Tamopol, George Weiss, and Paul Williams. Mr. Riepe expressed thanks to Susan Catherwood for "heroic service" having served on the Executive Committee for almost 20 years before the Trustees established a rotation policy.

The following were appointed to the Investment Board for a one-year term: Christopher Browne, Howard Marks (chair), Edward Mathias, Paul Miller, Jr., David Silfen, and Mark Wilnkelman. The Investment Board will soon establish a rotation policy as well.

Leonard Shapiro, who has just completed a three-year term as president of the Alumni Society, has been elected a Term Trustee; Andrew Heyer, chair of the Overseers of the School of Social Work, was also elected a Term Trustee.

EVP Clifford Stanley presented the University's Financial Report for the period ended April 30, 2003. He reported that the total net assets of the Consolidated University (academic and health services) decreased slightly to \$5.2 billion with net assets from operations increasing \$11.5 million compared to an increase of \$13.6 million for the prior ten-month period. Total operating revenue increased by 7.5% to \$2.936 billion and total expenses increased by 7.7% to \$2.925 billion. On the Academic Component, total net assets decreased slightly, to \$4.667 billion whereas net assets from operations increased \$5.7 million compared to a \$2.6 million decrease for FY 02. Total revenue and

(continued on page 3)

Class	Reunion	Total Dollars	Donors	Project
1938	65th	\$217,465	104	Class of 1938 Endowed Scholarships
1943	60th	\$762,683	240*	Class of 1943 Endowed Scholarship
1948	55th	\$364,318	277*	Class of 1948 Endowed Scholarship Fund
1953	50th	\$10,718,061*	390	Class of 1953 Interdisciplinary Learning Center in the School of Social Work and The Class of 1953 Digital Technology Center in Van Pelt Library and The Class of 1953 Endowed Scholarship
1958	45th	\$1,402,629	305	Class of 1958 Endowed Scholarship Fund
1963	40th	\$3,308,874	352	Schoenberg Center for Electronic Text and Images in Van Pelt Library, The Class of 1963 Endowed Scholarship and The Class of 1963 College of Women's Term Chair
1968	35th	\$2,271,595	475	Learning Skills Lab in Van Pelt Library and Class of 1968 Scholarship
1973	30th	\$1,124,910	543*	Group Study Room in Van Pelt Library and Supplement Existing Scholarship
1978	25th	\$3,968,199	715	Renovation of the Rare Books and Manuscripts library in Van Pelt Dietrich Library Center and Class and Individual Scholarship
1983	20th	\$3,419,157	581	Unrestricted
1988	15th	\$2,181,008*	545	Unrestricted
1993	10th	\$1,077,273*	535	Unrestricted
1998	5th	\$525,427	367	Unrestricted
2003	senior	\$33,874	906*	Class of 2003 Terrace at 36th and Locust Walk

## Trustees' Meeting Coverage

(continued from page 2)

other support increased 8.9% due to increase in sponsored program activities, tuition and fees and other income. Contributions increased by \$42.5 million. The University's total endowment decreased slightly from \$2.841 billion to \$2.814 billion. The Health Services Component experienced a \$3.3 million increase in total net assets to \$489 million. At the four owned hospitals, overall utilization remained strong with adult inpatient admissions increasing 3.4%.

Dr. Arthur Rubenstein gave the Penn Medicine Report in which he noted two major endeavors in cardiovascular and cancer research. There has been a 10% increase in applications with 52% of the entering class consisting of women. He said 20% of the class is pursuing a combined degree. He also proudly announced that a heart transplant patient returned to the hospital to deliver a healthy baby boy.

Dean of Admissions Lee Stetson's Report noted a record number of applicants for undergraduate admission—18,829 of whom 2,440 were accepted to Penn and an all time high yield of 64% of them choosing to attend Penn. He

said that with 10% of the incoming class coming from 62 countries, Penn has the highest percentage of international students in the Ivy League. Dean Stetson noted that the Class of 2007 hails from all 50 states, 51% of the Class is female, 12% alumni, 36% students of color and the average SAT score is 1409.

### Committee Reports

Leonard Shapiro reported that Paul Williams from Nuveen will become the new president of the Alumni Society. There was a record-breaking attendance for Alumni Weekend.

Dr. Tom Ehrlich presented two resolutions on behalf of the Academic Policy Committee. The Graduate School of Fine Arts (GSFA) received Trustee approval to change its name to the School of Design, to reflect the fact that it is not exclusively a graduate school nor is it only teaching fine arts. Dean Gary Hack said that this name change has been debated for some 40 years. The School of Arts and Sciences received approval to establish a department of criminology, becoming the first Ivy League institution with such a department.

Paul Kelly, chair of Audit and Compliance Committee, said that Penn is establishing a uni-

versity-wide system to comply with HIPPA.

The Budget and Finance Committee presented 14 resolutions, including the FY'04 Operating Budgets for Penn and UPHS, and the FY'04 Capital Plan for the University, which represents estimated project costs of \$184 million; and the FY'04 Capital Budget for the Health System in the amount of \$79.9 million.

The Trustees approved a resolution to authorize acquisition of the Postal Service complex located in the vicinity of 30th and Market Streets. The properties comprise four separate parcels: the main building, the annex, the garage and a 14-acre parcel of largely vacant land. The properties would be acquired for \$50.6 million; closing is expected in 2007 when the new Postal Service facility is completed.

Renovations to the Old Vet Quad and to the SEAS Graduate Research Wing were also approved. Another resolution authorizes the disposition and redevelopment of the two-story former Eastern Apparatus factory property at 126 South 30th Street as biomedical research labs.

Leonard Lauder gave the External Affairs Committee report noting the award Ira Harka-

(continued on page 4)

## Jeremy A. Sabloff: Stepping Down as Director of UPM in 2004

Dr. Jeremy A. Sabloff, director of the University of Pennsylvania Museum of Archaeology and Anthropology (UPM) since July 1, 1994, has announced his intention to step down from the directorship when he completes his ten years of service on June 30, 2004. A search committee for the position has been established.



Jeremy Sabloff

"Leading this world class museum—one endowed with a phenomenal collection, a history of exciting discoveries and cutting-edge research, and a dedicated Board of Overseers, staff and volunteers—has been a distinct honor and a privilege," he noted. "Next June, my term as director will have stretched to 10 years. The time will be right for me to step down and pursue research and publication interests—and for the Museum to move forward with new leadership into the 21<sup>st</sup> century."

Over the last nine years, Dr. Sabloff has led the Museum through a period of consolidation and growth. Under his directorship, the Museum raised \$17 million to build the Mainwaring Wing for collections storage and study, a state-of-the-art facility for the maintenance of at-risk artifacts, and for enhanced scholarly study, completed in May 2002. With the expansion of the Museum's traveling exhibitions program and a host of new research projects around the world, UPM's national and international outreach and reputation has broadened. Innovative special exhibitions and programs, plus long-term gallery renovations, including a recently completed suite of classical world galleries, the Stoner Courtyard, the Trescher Main Entrance, and the Merle-Smith Changing Exhibitions gallery, have given the Museum a fresher face, while maintaining the integrity of the venerated Wilson Eyre, Victorian-era building. The Museum has raised more than \$35 million towards its goal of \$55 million in its current Campaign for the 21st Century.

### Search for a Museum Director

Emphasizing Dr. Sabloff's substantial contributions to the Museum during the last decade, President Rodin and Provost Barchi have announced the formation of the committee to advise on selecting his successor as Williams Director of the University of Pennsylvania Museum of Archaeology and Anthropology. The search committee invites nominations and applications for the position of Director of the University of Pennsylvania Museum.

The Director is the chief academic, administrative and financial officer of the Museum. Strong preference will be accorded to candidates with significant achievements in a relevant scholarly discipline or professional field and leadership in a university or professional setting.

Applications and nominations, including curriculum vitae, may be forwarded to Chair, Director of University of Pennsylvania Museum of Archaeology & Anthropology Search Committee, Office of the Provost, 122 College Hall, Philadelphia, PA 19104-6303 or by e-mail to [simonr@pobox.upenn.edu](mailto:simonr@pobox.upenn.edu). Closing date for application is September 15, 2003.

The members of the Search committee are:

Peter Conn, Deputy Provost & Andrea Mitchell Professor of English (Chair)

Harold Dibble, Deputy Director for Curatorial Affairs & Professor of Anthropology

Joseph Farrell, Associate Dean SAS & Professor of Classical Studies

John Hover II, Chair, Museum Board of Overseers

Leslie Laird Kruhly, Secretary of the University  
Dwaune Latimer, the Jean Friendly Keeper of the African Section, Museum

A. Bruce Mainwaring, Museum Overseer & former Chair

Holly Pittman, Curator of the Near East Section, Museum & Professor of the History of Art

Gregory Urban, Department Chair & Professor of Anthropology

Lucy Fowler Williams, Keeper of Collections, American Section, Museum & Ph.D. student, Anthropology

Raymond Simon, Executive Assistant, Office of the Associate Provost (staff)

## GSE Vice Dean Stepping Down



Christopher Hopey

Dr. Christopher H. Hopey, vice dean for Graduate Admissions & Executive Education at the Graduate School of Education, will step down from his position, effective July 18, to accept an appointment at Northeastern University as Vice President for Adult and Continuing Education and Associate Professor in the School of Education. Dr. Hopey

received his undergraduate degree in political science and his M.P.A. in public management from Northeastern in 1988 and 1991, respectively. He received the Ph.D. in higher education management from GSE in 1998.

As founding director of the Office of Continuing Education & Executive Education at GSE, he worked with other faculty to develop a variety of executive degree and continuing education programs, including the Executive Doctorate in Higher Education Management, the Mid-career Doctorate in Educational Leadership, Part-Time Teacher Certification Program, Instructional Leadership Program for Aspiring Principals, the Corporate Learning Program, and the Penn Center for Educational Leadership.

According to GSE Dean Susan H. Fuhrman, "I accepted Dr. Hopey's resignation with regret: his superb leadership in executive education and admissions have greatly contributed to GSE's growth and vitality in recent years, and his business savvy and understanding of education have brought our work to a broader range of student markets and professional colleagues."

### Correction

Dr. Mirjam Cvetic's last name was misspelled in a front-page story in the May 27 issue, which announced that she is the inaugural holder of the Fay R. and Eugene L. Langberg Endowed Professor in Physics. We regret the omission of the last letter of her name. — Ed.

(continued from page 3)

vy and the Center for Community Partnerships received recently from the National Academy of Sciences and the William T. Grant Foundation (see page 7). He also mentioned the initiative to promote Penn-branded merchandise.

Bill Mack announced, on behalf of the Facilities and Campus Planning Committee, that the first floor of the West Philadelphia Trust Building, recently known as the Mellon Bank building, will become an Ann Taylor Loft in October. He also said that a Marathon Grill will open in the vacant space in The Bridge in November.

Investment Board chairman Howard Marks noted that the fiscal year performance turned positive, in line with benchmarks and that Penn should be doing well compared to peers. He credited Craig Carnaroli with Penn make money while others' endowments have shrunk.

### Mr. Horwich: Federal Relations

Lloyd Horwich has been named the new Director of Federal Relations. He comes to Penn from the U.S. Senate Committee on Health, Education, Labor, and Pensions, where he served as Education Counsel—Senator Christopher Dodd's senior staff member on education issues. Mr. Horwich earned a masters degree in public affairs and administration from the University of Wisconsin, Madison. He received his law degree from Boston University, and a B.S. in foreign service from Georgetown.



Lloyd Horwich

Melissa Peerless will be leaving Penn on August 1. She has served as Associate Director of Federal Relations since August 1999.

### Tax Rate Changes

The Jobs and Growth Tax Relief Reconciliation Act of 2003 that was signed into law on May 28, 2003 allows for reductions in Federal Income Tax Withholding. The new withholding tables incorporate the lower tax rates for employers to use when figuring the federal income tax to withhold from their employees' wages. The 2003 tax rates have been revised to reflect the following changes:

1. The tax rate brackets of 27%, 30%, 35% and 38.6% have been reduced to 25%, 28%, 33% and 35% respectively.
2. The supplemental flat withholding rate of 27% has been reduced to 25%.

These changes were put into affect starting with the weekly pay cycle for the pay period ending June 8, and check date June 13. Monthly paid employees should have seen the effects of the changes beginning with the June pay cycle. Contact the Payroll Office, (215) 898-6301 or e-mail at [payroll@pobox.upenn.edu](mailto:payroll@pobox.upenn.edu) with questions.

—John Christina, Jr., Payroll Manager

### WPSA Election Results

On June 11, 2003 the WPSA held its annual elections. Below are the results:

*Omar Mitchell*, Space Planning & Operations: Re-elected as Chair

*Coral Haas*, Abramson Family Cancer Research Institute: Re-elected as Vice-Chair

*Sylvie Beauvais*, Wharton Health Care Systems: Re-elected as Secretary

*Suzanne Oh*, Graduate School of Education: Elected Treasurer

—Omar Mitchell, Chair

### New PPSA Board

Thank you to all who were able to attend the annual election meeting. The results of the elections are as follows:

Chair-elect: *Andy Atzert*, Wharton Executive Education

Vice Chair-elect: *Kate Ward-Gaus*, Office of Health Education

Members-at-Large:

*Joe Fischer*, Public Safety;

*Ty Furman*, Student Performing Arts;

*Isabel Sampson-Mapp*, Center for Community Partnerships

For more information on PPSA, please visit our website at [www.upenn.edu/ppsa](http://www.upenn.edu/ppsa). We look forward to seeing all of you at future events.

—Rodney Robinson, PPSA, Chair

### New Faculty Club Officers

The Faculty Club Annual Meeting was held on May 7, 2003. The Board of Governors for 2003-2004 is as follows:

*Elsa Ramsden* - President

*Ann O'Sullivan* - Vice President

*John Rudolph* - Secretary

*Anthony Tomazinis* - Treasurer

*Roger Allen*;

*Elijah Anderson*;

*Janet Marie Ansert\**;

*Patricia D. Black\**;

*Susan Croll*;

*Beverly Edwards*;

*Gary D. Foster\**;

*Anna Loh*;

*Edward Shils*;

*Henry Teune\**;

*Andrea Thomas-Reynolds\**

\* Newly elected to the Board of Governors

All Penn faculty, staff, alumni and graduate students are invited to become members of the Faculty Club. [www.upenn.edu/facultyclub](http://www.upenn.edu/facultyclub)

—Natalka A. Swavely, Club Coordinator

## Speaking Out

The following letter was sent to President Rodin and to Almanac.

### Enlightened Leadership

I enlighten your faculty e-mail concerning your planned retirement at the end of June 2004 and while I am very happy for you for obviously having made a decision that's important in your life, your family and your career, it is nevertheless being viewed by Penn's family with a great deal of sadness.

As I stated several years ago when I received the Alumni Award of Merit, I have had an opportunity to know and work with Presidents Gates, Stassen, Meyerson, Hackney and yourself. I made it clear to the audience that you more than hold your own when compared to each of our distinguished past presidents.

It's rare that one can have a CEO who at one time is a distinguished scholar, tremendous leader, an entrepreneur, a planner and yes, a great achiever. You've not only had a big picture of Penn as it was and what it should be like in the future, but also you are able to handle thousands of details, which sometimes cannot be delegated, with respect to donors, faculty achievers, and other deserving individuals; providing each with

thanks from the top echelon of the University community.

I myself have been involved in community relations in the West Philadelphia area ever since President Harnwell appointed me in the early sixties to chair a committee on the Science Center in University City. At that time, our relationship with the citizens of West Philadelphia was not as good as it should have been on the basis of neighborliness. Since my study in the early sixties, which was confirmed by the Penn faculty with a majority of only about 1%, there has been a steady integration of University plans and societal accomplishments in West Philadelphia with Penn as the nexus under your enlightened leadership.

I hope during the final year of your term of office that you will be able to execute even more real gains in the community relationships that were part of your earlier vision. I know I speak for many of my colleagues when we hope that you will continue to identify yourself as one of Penn's leaders for at least the next two decades.

My very best wishes and hope for good luck for you and your family.

—Edward B. Shils, George W. Taylor Professor Emeritus of Entrepreneurial Studies

### Dual Identity?

The altercation between "Name Withheld" and Lori Doyle/Communications in our May 13 *Almanac* over *Upenn.edu* versus *Penn.edu* reminds me of a similar altercation I experienced and helped to solve at a faculty meeting about 30 or 40 years ago.

A group of our U.Penn faculty Ivy League scholars put forth a proposition that our University of Pennsylvania change its name to Benjamin Franklin University—to emphasize that we were built on a BF to Ivy League tradition and avoid our being confused with "not-as-academic" Penn State.

After considerable discourse and desiring to end the dispute, I rose with the suggestion that we count our blessings and leave things alone. Why? Well we had it both ways—as U.Penn we were Ivy League and very academic, while our sometimes being confused with Penn State gave us a semi-reputation of being a great "Football School" thus improving attendance at our sports events in Franklin Field. And my motion passed, leaving well enough alone.

—F. Hilary Convoy, Professor Emeritus of History

Speaking Out welcomes reader contributions. Short, timely letters on University issues will be accepted by August 18 for the September 2 issue, subject to right-of-reply guidelines. Advance notice of intention to submit is appreciated. —Eds.

# Deaths

## **Dr. Dickson, Jr., Environmental Med**

Dr. James Gillespie Dickson, Jr., formerly the assistant director and dive director of the pressure/altitude chamber complex at the Institute for Environmental Medicine died June 9, at the age of 77. Dr. Dickson was living in Portland, Maine.

Dr. Dickson was a 1960 graduate of the School of Medicine and completed a residency in anesthesiology here. He was also a clinical anesthesiologist at HUP and Millville Hospital, now South Jersey Hospital Systems/Millville Division. He accepted a position at Boston University Hospital, now Boston University Medical Center, in 1985 and retired from there in 1995. He moved to Maine in 1998.

He is survived by his wife, Nancy Struble; daughter, Linda Dickson Barth; two sons, Robert Pickett Dickson and James Langley Dickson; and one grandson.

Memorial donations may be made to the American Cancer Society, High Point Professional Building, 700 Horizon Circle, Suite 201, Chalfont, PA, 18914.

## **Dr. Elliott, Neurology**

Dr. Frank Abercrombie Elliott, emeritus professor of neurology, died on May 28 at the age of 92 of complications from a stroke.

Dr. Elliott graduated from the University of Capetown Medical School, South Africa in 1934 and trained at the National Hospital of Neurological Disease in Queen Square, London. He was chief consultant of neurology to the British military overseeing services in Scotland, Ireland and India from 1940-1947. In 1948 he became chief of neurology at Charing Cross Hospital, University of London.

In 1959 Dr. Elliott joined Pennsylvania Hospital and established the department of neurology. His research focused on stroke prevention and the treatment of episodic rage disorders. He developed one of the first stroke risk-analysis clinics in the U.S. in the 1960s. In 1960 Dr. Elliott became a professor of neurology at Penn's School of Medicine. He retired in 1974.

Dr. Elliott is well known for his textbook *Clinical Neurology*, originally published in 1964, updated in 1974. It was considered the classic reference book for students and doctors alike.

Dr. Elliott is survived by his daughters, Sally Ridley-Day and Gillian K. Elliot; stepsons, Joshua and Jonathan Marvel; six grandchildren; and three great-grandchildren.

Memorial donations may be sent to Frank A. and Gwladys H. Elliott Fund, Pennsylvania Hospital, Development Office, No. 2 Pine East, 800 Spruce St., Philadelphia, PA, 19107.

## **Dr. Haselgrove, Biophysics**

Dr. John C. Haselgrove, director of the MRI Research Facility at CHOP and adjunct professor of physics and astronomy, died June 21 at the age of 59.

Dr. Haselgrove, was born in Dorchester England and graduated with a degree in physics from King's College, London in 1965. He earned a Ph.D. in biophysics from King's College, Cambridge, in 1971. In 1977 he became a research associate at the Johnson Research Foundation and he joined Penn's department of biochemistry and biophysics in 1978 as a research assistant professor. He became research associate professor of biochemistry and biophysics in 1985 and in 1994 became the director of the MRI Research

Facility at CHOP.

He is survived by his wife, Birgitte; daughter, Annemarie; a son, Christian; a sister, Susan Hourisi; and two nephews.

Memorial donations may be made to Guillain-Barre Syndrome Foundation International, PO Box 262, Wynnewood, PA, 19096.

## **Dr. Hoenigswald, Linguistics**

Dr. Henry M. Hoenigswald, emeritus professor of linguistics, died on June 16, at the age of 88. Dr. Hoenigswald had been a resident of the Quadrangle in Haverford since last year.

Dr. Hoenigswald earned his academic degrees in the classics and Indo-European studies from the University of Munich, the University of Padua and the University of Florence before fleeing Europe in 1939 to escape the Nazis. After immigrating to the U.S., Dr. Hoenigswald taught at Yale University and the University of Texas. He also worked for the Foreign Service Institute of the U.S. State Department.

He joined the Penn faculty in 1948 and was appointed professor of linguistics in 1959. He was a Guggenheim Fellow in 1950 and received a fellowship from the Center for Advanced Study in the Behavioral Sciences in 1962. Dr. Hoenigswald retired from Penn in 1985.

He was a former president of the Linguistic Society of America and the Philadelphia Classical Society. Additionally, he was a member of the American Philosophical Society, the National Academy of Science, and the American Academy of Arts and Sciences.

Dr. Hoenigswald is survived by his daughters, Frances and Ann; a half-sister; and two grandsons.

Memorial donations may be made to the Gabriele Hoenigswald Fund at the Swarthmore Public Library, 121 Park Ave., Swarthmore, PA, 19081 or in the name of Henry Hoenigswald to Amnesty International, 322 Eighth Ave., New York, NY, 10001.

## **Dr. Marden, Otorhinolaryngology**

Dr. Philip Ayer Marden, emeritus professor of otorhinolaryngology, died on June 4, at the age of 91.

Dr. Marden grew up in New Hampshire and graduated from Dartmouth College. He earned his medical degree from Penn and became a specialist in otorhinolaryngology, dealing with the diseases of the ears, nose and throat. He joined the Penn medical school faculty in 1940, and served as the chairman of the department of otorhinolaryngology from 1959 to 1972. He continued to see patients until 1992. Dr. Marden served as an army physician during World War II in India.

He received an award for 50 years of service from the School of Medicine in 1998.

Dr. Marden is survived by his nephew Philip W. Marden; and a grandniece.

Memorial donations for medical research may be made to the UPHS, 3400 Spruce St., Philadelphia, PA, 19104.

## **Dr. Sayen, Medicine**

Dr. John Joyce Sayen, associate professor emeritus of medicine and pathology, died on June 4 at the age of 89 of complications from a stroke.

Dr. Sayen earned a B.A. in English from Princeton and graduated from Penn's School of Medicine in 1939. He completed his residency at Penn in 1942 and then served in the Army being discharged at the rank of captain in 1945. While in the Army, he served as head

of a typhus ward in the Assam region of India at a base hospital organized by the University of Pennsylvania. Dr. Sayen was awarded the Bronze Star for his research work on scrub typhus, a tropical disease causing casualties among military personnel.

Dr. Sayen returned to HUP after the war, where he was the principal investigator on research studies on the treatment of heart disease. He was a fellow of the American College of Physicians and of the American Cardiology Society. He served on several boards of the Philadelphia County Medical Society and led the group's AIDS division. He retired in the early 1990s.

He is survived by a daughter, Catherine Sayen Ravenel; two sons, John J. Jr. and George; and six grandchildren.

## **Dr. Sloviter, Surgery**

Dr. Henry Alan Sloviter, emeritus professor of surgery, died on May 28 at the age of 88.

Dr. Sloviter earned his bachelor's and master's degrees from Temple University and earned a Ph.D. in chemistry from Penn in 1942. During World War II he worked at the Naval Shipyard as a chemist and physicist. After the War he graduated from Penn's medical school in 1949. He worked at the National Institute for Medical Research in London for three years before returning to Penn as a professor of biochemistry and biophysics. He remained at Penn teaching and conducting research on brain metabolism and artificial red blood cells until his retirement in the early 1990s.

He is survived by his wife, Dolores Korman Sloviter, a judge on the U.S. Court of Appeals for the Third Circuit; a daughter, Vikki; two grandchildren; and a sister.

Memorial donations may be sent to the Henry Sloviter Student Fund in Chemistry, Temple University, Office of Development, 1938 Liacouras Walk, Philadelphia, PA, 19122.

## **Dr. Stumacher, Medicine**

Dr. Russell J. Stumacher, a former clinical associate professor of medicine, died on June 10, at the age of 60.

Dr. Stumacher earned his bachelor's degree from Penn and was the play-by-play voice of Penn basketball and baseball at WXPN-FM during his undergraduate career. He graduated from Thomas Jefferson University Medical School in 1968 and completed an internship at Cornell-North Shore Hospital and a residency at Montreal General Hospital. He also served on Naval hospital ship in Saigon Harbor. From 1975 until his retirement in 2001 Dr. Stumacher was chief of infectious diseases and an epidemiologist at Graduate Hospital. He taught at MCP-Hahnemann School of Medicine for three years and was clinical associate professor at Penn's School of Medicine for 22 years from 1976 until 1997.

Dr. Stumacher is survived by his wife, Sharon Ganzfried Stumacher; a daughter, Alison; a son, Roger; and a brother.

Memorial donations may be made to Dr. Russell J. Stumacher Prize Fund, University of Pennsylvania School of Medicine, 3535 Market St., Suite 750, Philadelphia, PA, 19104.

## **To Report A Death**

*Almanac* appreciates being informed of the deaths of current and former faculty and staff members, students, and other members of the University community.

Please send information or call (215) 898-5274 or e-mail [almanac@pobox.upenn.edu](mailto:almanac@pobox.upenn.edu).

# HONORS & Other Things

## Bristol-Myers Squibb Unrestricted Research Grants: Dr. Lazar and Dr. Lee

In a rare coincidence, two of the most coveted honors in biomedical research have been received by Penn researchers this year. It is believed to be the first time in the 26-year history of the Bristol-Myers Squibb Unrestricted Biomedical Research Grants Program for two winners in one year to be from the same institution. Dr. Mitchell A. Lazar, and Dr. Virginia M.-Y. Lee, have each been awarded \$500,000 in no-strings attached grants from the Bristol-Myers Squibb Unrestricted Biomedical Research Program to support their work in the fields of metabolic and neuroscience research.

The unrestricted nature of the grants allows researchers to put the support where it is most needed and gives scientists the freedom to pursue uncharted paths. Both researchers plan to use their unrestricted grants to further the research capabilities of their laboratories.

"It is a wonderful honor for an institution to count a single recipient of a Bristol-Myers Squibb research grant among its faculty, let alone two such researchers honored in a single year," said Dr. Arthur H. Rubenstein, EVP of Penn's Health System and Dean of the School of Medicine. "Mitchell Lazar and Virginia Lee represent the spirit of medical science at Penn—they each excel at studying the basic molecular underpinnings of a disease, yet still manage to focus on translating their findings into medical practice."

Dr. Lazar, professor of medicine and genetics, Chief of Endocrinology, Diabetes, and Metabolism, and Director of the Penn Diabetes Center, is an internationally known expert in nuclear hormone receptors and the regulation of gene transcription. His research grant will further support his groundbreaking research into hormone regulation of gene expression. Dr. Simeon Taylor, vice president, Hopewell Biology, Bristol-Myers Squibb Pharmaceutical Research Institute, in Princeton, presented a check to Dr. Lazar.

"Dr. Lazar's research on the endocrine and metabolic aspects of gene regulation is highly regarded by scientists throughout the world, with implications even in the field of oncology research," said Dr. Taylor. "Recently, he has provided new insights into insulin resistance in type II diabetes and the relationship between obesity and diabetes. We are proud to welcome Dr. Lazar to the distinguished roster of scientists participating in our unrestricted metabolic research grants program."

Dr. Lee, The John H. Ware 3rd Professor in Alzheimer's Research and Co-Director of the Center for Neurodegenerative Disease Research, is a world leader in the field of Alzheimer's disease and dementias. Dr. Frank D. Yocca, executive director, Neuroscience Clinical Design and Evaluation, Bristol-Myers Squibb Pharmaceutical Research Institute, Princeton, presented a check to Dr. Lee.

"Dr. Lee is clearly a world leader in the field of Alzheimer's disease and dementias," said Dr. Yocca. "Her discoveries in the biochemistry and pathophysiology of these diseases have contributed new understandings of how these diseases develop and progress. Dr. Lee adds an exciting new dimension to the work of scientists current-

ly participating in our unrestricted neuroscience research grants program."

The Bristol-Myers Squibb Unrestricted Biomedical Research Grants Program offers the world's premier research institutions the opportunity to pursue new clinical and laboratory findings, support promising young scientists, or acquire new laboratory technology—with no strings attached.

Initiated in 1977, the Bristol-Myers Squibb Foundation has awarded unrestricted research grants to support research in the fields of cancer, cardiovascular diseases, infectious diseases, metabolic diseases, neuroscience and nutrition. Through the Bristol-Myers Squibb Unrestricted Biomedical Research Grants Program, the Foundation has committed over \$100 million in support of 240 grants to 150 institutions in 22 countries worldwide.

## Three ACLS Fellows

Three Penn faculty members are among the 87 scholars chosen to receive American Council of Learned Societies (ACLS) Fellowships for postdoctoral research in the humanities and humanities-related social sciences. They were chosen from a field of 925 applicants.

Dr. Emily R. Steiner, assistant professor of English Literature, *Languages of Class and the Making of Vernacular Literature in Medieval England*. (Dr. Steiner has been designated an ACLS/Andrew W. Mellon Foundation Junior Faculty Fellow).

Dr. Peter T. Struck, assistant professor of Classics, *Divination and Greek Hermeneutics*. (Dr. Struck has been designated an ACLS/Andrew W. Mellon Foundation Junior Faculty Fellow).

Dr. Robert Vitalis, associate professor of political science, *America's Kingdom and the World Oil Frontier, 1945-1970* (Dr. Vitalis has been designated an ACLS/SSRC/NEH International and Area Studies Fellow).

## Three Awards for Alzheimer's Research

Penn's NIH-funded Alzheimer's Disease Core Center (ADCC) in the Center for Neurodegenerative Disease Research (CNDR) and the Institute for Medicine and Engineering (IME) have joined together in funding three pilot research projects for July 1, 2003. These are one-year, non-renewable, \$20,000 grants that support pilot research projects on the etiology, pathogenesis, diagnosis or management of dementia of the Alzheimer's type or related conditions.

The ADCC awarded two investigators: Dr. Leslie M. Shaw, professor of pathology and laboratory medicine, for *Validation of New Biomarkers of Oxidant Stress in Alzheimer's Disease*, and Dr. Kelly L. Jordan-Sciutto, assistant professor of pathology, School of Dental Medicine, for *Endogenous Antioxidant Response in Alzheimer's Disease*. The IME will fund Dr. Gul Moonis, assistant professor of radiology, neuro-radiology section, for her project entitled *Tissue Characterization in Alzheimer's Disease via Standardization of Image Intensity Scale*. These pilot projects are important in seeding multidisciplinary research across departments and schools on campus.

## Dr. Sands: Metanexus Institute Grant

Dr. Roberta Sands, professor of social work, has received a two-year research grant from the Metanexus Institute on Religion and Science for studies on *Baalei Teshuvah's Spiritual Transformational Soul Work*. Dr. Sands is one of 24 recipients of a \$150,000 grant awarded for scientific studies on the phenomena of spiritual transformation through the Spiritual Transformation Scientific Research Program. This is the first multidisciplinary scientific investigation of this kind. Dr. Sands' study aims to build a dynamic model of the stages of "soul work" of Jewish adults who have become Orthodox, the baalei teshuvah, in the aftermath of profound spiritual experience. A full model of this process had not been addressed in previous research.

## Jeanne Clery Campus Safety Award

Penn has been awarded the Jeanne Clery Campus Safety Award for 2003. It was one of two institutions of higher education selected to receive the award which was established in 1994 and is presented annually by Howard and Connie Clery in memory of their daughter Jeanne Clery to schools and individuals who have done extraordinary things to make college and university students safer.

Penn was honored for improvements it has made to its Public Safety Department during the past few years. "We wanted to honor the University of Pennsylvania for its innovative technological programs as well as its campus and community patrols," Mr. Clery said. "This award also lets the rest of the academic world know that schools are fighting campus crime with programs that do work." "We are thrilled to accept the Jeanne Clery Award for 2003," said Maureen Rush, Vice President of Public Safety. "It is an honor to be recognized by an organization that cares deeply about the safety of students."

## Two White House Fellows

Eileen Stephens, a recent graduate of the Wharton School, where she received an M.B.A. in May 2003. Ms. Stephens began her career in the medical device industry with Cordis Corporation, where she designed and supervised the manufacture of custom catheters. She worked in the Japan office of Guidant Corporation where she received a patent for co-inventing a safer guidewire. She also co-founded the pan-university Social Impact Management Initiative, a partnership to explore the potential of business to address broader societal concerns. She received a B.S. in Mechanical Engineering from MIT.

Cathy Taylor, is a vice president, Investment and Business Development, with American Express. Created, implemented and currently manages American Express's strategic investment strategy, as well as founded and managed the division's Mentor Program. She founded LeadingEdge Partners and remains active as a teacher for this community organization that provides leadership training to students in New York City public schools. Ms. Taylor received a B.A. from Duke University and M.B.A. from the Wharton School. At Wharton, she served as the elected student body president and spearheaded the creation of Wharton's Volunteer Day.

# Government Affairs Update

## Federal Relations

### *New Staff*

The Office of Government, Community and Public Affairs is pleased to welcome Lloyd Horwich as the new Director of Federal Relations. Mr. Horwich comes to Penn from the United States Senate Committee on Health, Education, Labor, and Pensions, where he served as Education Counsel—Senator Christopher Dodd's senior staff member on education issues. In this capacity, Mr. Horwich worked on education policy and appropriations, including the No Child Left Behind Act and the reauthorization of the Department of Education's Office of Educational Research and Improvement. Prior to his service in the Senate, Mr. Horwich worked as a Policy Analyst in the Office of Student Financial Assistance at the U.S. Department of Education. He analyzed legislative, regulatory, and administrative issues regarding the federal student aid programs. Mr. Horwich earned a masters degree in public affairs and administration from the University of Wisconsin, Madison. He received his law degree from Boston University, and a B.S. in foreign service from Georgetown University.

### *Medical Liability Reform*

In early July, the Senate took up the matter of medical liability reform. Unfortunately, the Senate failed to pass a measure that would have continued floor debate on the issue of medical liability reform. Both Senators Rick Santorum (R-PA) and Arlen Specter (R-PA) voted in favor of advancing the debate on medical liability. However, unlike its companion bill, Congressman James Greenwood's (R-PA) HEALTH Act that passed the House earlier this session, the procedural vote in the Senate on the Patients First Act of 2003 prevented consideration of the bill at this time. By a 49 to 48 vote, the Senate failed to invoke cloture (the formal procedure used to end a filibuster) on the motion, which required 60 votes, to proceed to the bill. Senate Majority Leader Bill Frist (R-TN) said the Senate will take up medical liability reform legislation again in the fall, after the Senate returns from its August recess.

## Commonwealth Relations

### *Budget Update*

The new fiscal year for the Commonwealth has begun and the Legislature has yet to finalize Penn's appropriation. On July 2, the House approved HB 1379, legislation providing \$42.9 million in funding to five University programs (Veterinary School, Medical School, Cardiovascular Studies, Dental Clinics and University Museum). This bill provides funding for FY 2003-04 at the level recommended by Governor Rendell in his budget proposal—a 5% cut overall. HB 1379 is now under consideration by the Senate, which will likely not take up consideration of this bill, and all other college and university funding, until such time as the Legislative leadership and the Administration come to an overall agreement on the state's budget. At this point decisions will be made about funding for higher education.

Negotiators continue to work on finalizing the Commonwealth's General Fund budget, including the possible restoration of cuts included in the "bare-bones" state budget approved in March. One of the major areas of cuts affecting Penn Medicine is the complete elimination of various Medical Assistance programs, which provide vital funding to Penn's hospitals to support patient care to the needy. These programs include the Community Access Fund, Medical Assistance medical education payments, and outpatient disproportionate share payments. Penn Medicine's three urban hospitals would suffer a \$13.9 million annual funding cut from the elimination of these programs.

Final resolution of the Commonwealth budget for FY 2003-04, including Penn's non-preferred appropriation and possible restoration of Medical Assistance cuts, will likely not occur before the end of July, if not later.

### *Medical Liability Reform*

At the state level, the provider community has been advocating for reform of the medical liability system in Pennsylvania for years and has been successful in passing some limited reform measures. As the crisis continues, the costs and availability of coverage have become especially acute over the past eighteen months. The provider community in Pennsylvania remains united in seeking two critical steps: short-term financial relief to physicians and hospitals as they must pay ever-increasing premiums for coverage and for the state-mandated MCARE Fund; and long-term reform most importantly in the form of reasonable caps on non-economic damages.

On June 9, Governor Rendell revealed a \$600 million plan to cut malpractice insurance costs for physicians. The Governor's plan would boost state Medical Assistance payments to obstetricians and hospital trauma centers, provide subsidies for MCARE Fund surcharges paid by high-risk specialties, limit attorneys fees, and give judges new power to reduce multi-million dollar jury verdicts that they believe are not justified. The

Governor did not identify any funding sources for the subsidies and, most critical, his plan does not include a cap on non-economic damages in malpractice lawsuits.

The proposal would require the approval of two other branches of government to become law. Some segments would require votes in the legislature while others, including the cap on attorney's fees, would require rule changes by the Supreme Court. The initiative alone will cost the Commonwealth \$200 million a year from 2003 to 2005. After the insurance abatements in 2005, the Governor said the state would look at how much malpractice insurance rates have dropped and either phase out MCARE or keep it if rates have not fallen enough.

These developments came on the heels of the release of a Pew Foundation report concerning the causes and potential consequences of the state's medical liability crisis. The authors suggest that state policymakers consider strategies including conventional tort and insurance reforms, but also explore other remedies including non-judicial venue for handling malpractice cases. The Report does not take a position on capping non-economic damages. Importantly, the Report concludes that it will be very difficult to reduce medical liability costs in the short-term and that subsidies to physicians and other providers (especially for the MCARE surcharge) are necessary to enable providers to access coverage in a hard insurance market.

## City and Community Relations

### *Philadelphia Municipal Elections*

This year is a Municipal Election Year in the City of Philadelphia. Voters will elect candidates for the following seats in November: Mayor, City Council members, City Commissioners, Clerk of Quarter Sessions, Register of Wills, Sheriff, and Trial Judges in the Court of Common Pleas, Municipal Court, and Traffic Court.

Voter turn-out was light in the Primary Election that took place on Tuesday, May 20. All ten incumbents holding district Council seats won their party nominations to run for another term. Only Democrats Rick Mariano (7th) and Donna Reed Miller (8th) faced serious challenges, and both prevailed. Third District Councilwoman Jannie L. Blackwell ran unopposed. Five of the six living incumbent at-large Council members won nominations to run for re-election in the fall. The most notable change that resulted from the election was the ouster of 19-year Councilman Angel Ortiz and the nomination of candidate Juan F. Ramos. Incumbent Councilman at-large Frank Rizzo was the top vote-getter on the Republican ballot; candidate Jack Kelly led the other four Republican nominees running to fill the empty minority at-large seat vacated by the late W. Thacher Longstreth.

Mayor John F. Street and Republican challenger Sam Katz had no opponents for their party nominations. This fall, they will reprise their 1999 contest, which John Street won by approximately 9,000 votes, a narrow 1% margin. Polls and press reports indicate that the race is competitive, with even fundraising on both sides. Analysts predict a close race that will depend heavily on factors such as swing votes, voter turnout, and race.

### *Civic Center Resolution*

The Office of City and Community Relations worked in conjunction with the School of Medicine and the Department of Facilities and Real Estate Services to obtain the approval of City Council for the conveyance of two former Civic Center parcels to the University for redevelopment. Pursuant to the bill passed in 1998 authorizing the sale of the property to the University and Children's Hospital of Philadelphia, Council reserved the right of approval of the final transfer of the property from PAID to the institutions. This approval process took the form of a resolution sponsored by Councilwoman Blackwell that passed on Thursday, June 12.

### *Center for Community Partnerships*

The Center for Community Partnerships, the West Philadelphia Partnership, and the School District of Philadelphia-West Region were awarded the inaugural William T. Grant Foundation Youth Development Prize sponsored in collaboration with the National Academy of Sciences' Board on Children, Youth and Families for their "University-Assisted Community School Program." The award was announced at a gala dinner at the NAS on March 25, 2003. NAS reviewed nearly 270 applications.

The Prize carries a \$100,000 award with the goal of "recognizing high-quality, evidence-based collaborative efforts that generate significant advances in knowledge while increasing the opportunities for young people to move successfully through adolescence with ample support and care."

The NAS award announcement is available at [www.nas.edu/](http://www.nas.edu/) and the WT Grant Foundation announcement is available at [www.wtgrantfoundation.org/](http://www.wtgrantfoundation.org/).

—Carol R. Scheman, Vice President,  
Government, Community and Public Affairs

# Business Services Update

## 2003-2004 Parking Rates

For AY2003-2004, permit parking fees will increase an average of 5%, a \$1.16 per week increase in most University parking lots. The average permit parking rate will be \$5.82 per working day, which is significantly less than the daily flat rate of \$11 that non-permit holders currently pay in Penn's transient parking lots.

The general permit parking fee structure is compliant with University policy that requires the Parking program to be self-supporting. Parking fees pay for surface lot improvements (e.g., costs of pavement, fencing, striping, control gates), reduce the construction debt on garages, finance new construction of parking facilities, pay parking taxes and real estate rental fees, pay the salaries of attendants, and cover the cost of operating expenses (e.g., electricity, decals, snow removal).

Parking in an effort to add value to the parking experience has embarked on a campaign of infrastructure improvements and upgrades to the facilities. This summer we are making \$2 million in improvements to Garage #7 (University Museum) and during the course of the year we will make several safety enhancements to our garages including Closed Circuit TV.

### 2003-2004 Permit Parking Rates

15% City of Philadelphia parking tax included

Permit Class	Description	(Sept-Aug)
Class A	Campus Parking	\$1,455
Class B	Remote/Student Commuter	\$870
Class C	Evening/Weekend	\$440

University faculty and staff are encouraged to pay their parking fees in installments through automatic payroll deduction. Equal installments (12 monthly or 52 weekly) will be taken from each paycheck issued September through August. Additionally, you will be automatically enrolled in the Penn Commuter Choice program, which offers you significant tax savings by deducting parking fees (up to \$175 per month or \$2,100 per year) on a pre-tax basis. Through Penn Commuter Choice, you do not pay federal or FICA taxes on the deducted amount.

## Penn Children's Center: Fee Reduction, Open Enrollment

Each year the Penn Children's Center (the University's child-care program) and the Division of Human Resources set aside funds to help reduce the cost of the program for qualified Penn staff. The Penn Children's Center is located at the Left Bank complex at 3160 Chestnut Street. Applications are now being accepted for summer and fall enrollment for toddlers and preschool age children. Waitlist applications for infants are also being accepted.

The Penn Children's Center serves children ages 12 weeks through 5 years. The program features weekly themes and a diverse, multicultural curriculum based on the principles of early childhood education. PCC features a nurturing infant program, well-equipped classrooms with computers, a multi-purpose indoor-gym room, an outdoor playground and children's garden. The teaching staff is highly trained in early childhood education and the program is accredited by the National Association for the Education of Young Children (NAEYC).

Please contact Natalie Subeh, Executive Director, or Anjali Chawla, Director, at (215) 898-5268 for additional information or to arrange a tour. Visit our web page: [www.upenn.edu/childcare](http://www.upenn.edu/childcare).

### Tuition Fees for June 30, 2003 through June 27, 2004

	Penn Rate	Regular Rate	Sliding fee A	Sliding fee B
<b>Pre School</b>				
5 days	\$194	\$220	\$116	\$145
4 days	\$170	\$193	\$111	\$127
3 days	\$139	\$156	\$82	\$103
2 days	\$100	\$114	\$59	\$75
<b>Toddlers</b>				
5 days	\$239	\$267	\$141	\$179
4 days	\$213	\$239	\$128	\$160
3 days	\$188	\$211	\$112	\$141
2 days	\$125	\$141	\$75	\$94
<b>Infants</b>				
5 days	\$288	\$318	\$172	\$215
4 days	\$252	\$277	\$150	\$187
3 days	\$207	\$228	\$123	\$155
2 days	\$139	\$152	\$82	\$103
<b>Drop In Care</b>				
Preschool	\$50		Sliding fee A rates for Univ. staff only, with combined family income below \$50,000	Sliding fee B rates for Univ. staff only, with combined family income below \$60,000
Toddlers	\$63			
Infants	\$70			

Penn rate available to Penn faculty, staff, students, and UPHS employees.

Assisted rate (Sliding fee A & B) available only to regular University (not UPHS) faculty and staff who meet eligibility requirements.

Subject to space availability.

## Computer Connection's Annual Back-To-School Sale

The Penn Computer Connection announces its Fall 2003 Back-To-School Sale, featuring educationally discounted computers from Dell, IBM and Apple available to faculty, staff and students. Log on to [www.upenn.edu/computerstore](http://www.upenn.edu/computerstore) for more information or visit the showroom at 3610 Sansom St.

— Leroy D. Nunery II, Vice President for Business Services

## 2003-2004 Faculty/Staff Directory

Production of the 2003-2004 Telephone Directory is progressing on schedule. All revisions made online by July 1 will appear in the 2003-2004 Telephone Directory (subject to your departmental Directory Liaison's approval). Directory Liaisons will receive a departmental listing by July 11 to verify or make revisions.

Directories will be distributed to the campus community at the beginning of October.

For Directory Liaisons Only—Deadline for Departmental Blue Pages (former Tan Pages): August 15, 2003.

Directory Liaisons will receive departmental listings, blue pages, faculty listings, and telephone directory order forms by July 14.

Liaisons should submit any additions, deletions, or other changes by Friday, August 15. Please submit these final revisions one of the following ways:

- ◆ Send hard-copy to the Telephone Directory Office, 125 Sansom Place East, 3600 Chestnut Street/6106

- ◆ Send e-mail to [fsdirectory@pobox.upenn.edu](mailto:fsdirectory@pobox.upenn.edu)

### To Change/Update Your Directory Listing

For future updates to your directory record, go to [www.upenn.edu/directories/dir-update.html](http://www.upenn.edu/directories/dir-update.html). Your PennKey and password are required to enter the online application. (For more information regarding your PennKey and password, go to [www.upenn.edu/computing/pennkey](http://www.upenn.edu/computing/pennkey)). New staff members may edit their

record after they have obtained a PennCard and PennKey/password.

Faculty and staff should continue to use the online update feature to revise directory information throughout the year. These updates will be made instantly to the online directory, available from the main Penn webpage, allowing the University community access to immediate and accurate information.

### For More Information

If you have questions or need more information, contact Kimberly Lewis at (215) 898-7643 or [fsdirectory@pobox.upenn.edu](mailto:fsdirectory@pobox.upenn.edu).

— Donna M. Petrelli-Aquino,  
Senior IT Support Specialist,  
Division of Business Services



## Recognized Holidays for Fiscal Year 2004

The following holidays will be observed by the University in this fiscal year (July 1, 2003 through June 30, 2004) on the dates listed below:

<i>Independence Day</i>	Friday, July 4, 2003
<i>Labor Day</i>	Monday, September 1, 2003
<i>Thanksgiving</i>	Thursday and Friday, November 27 and 28, 2003
<i>Christmas Day</i>	Thursday, December 25, 2003
<i>New Year's Day</i>	Thursday, January 1, 2004
<i>Martin Luther King, Jr. Day</i>	Monday, January 19, 2004
<i>Memorial Day</i>	Monday, May 31, 2004

The Special Winter Vacation granted to faculty and staff between Christmas Day and New Year's Day will be December 26, 29, 30, and 31, 2003. After an examination of the potential business needs for staying open the Friday after New Year's Day, 2004 and to give our employees a well deserved additional day of rest and replenishment, the University will extend the Special Winter Vacation for 2003 to include Friday, January 2, 2004. If an employee is required to work to continue departmental operations for part or all of this period, the Special Winter Vacation can be rescheduled for some other time.

Staff members who are absent from work either the work day before a holiday, the work day after a holiday, or both days, will receive holiday pay if that absence is charged to pre-approved paid time off or to sick days substantiated by a written note from the staff member's health care provider.

Vacations and holidays for Hospital employees or those University staff members in collective bargaining units are governed by the terms of hospital policies or the respective collective bargaining agreements.

### Fiscal Year 2005 Recognized Holidays

The following holidays will be observed in fiscal year 2005 (July 1, 2004 through June 30, 2005):

<i>Independence Day</i>	Monday, July 5, 2004
<i>Labor Day</i>	Monday, September 6, 2004
<i>Thanksgiving</i>	Thursday and Friday, November 25 and 26, 2004
<i>Christmas Day</i>	Friday, December 24, 2004
<i>New Year's Day</i>	Friday, December 31, 2004
<i>Martin Luther King, Jr. Day</i>	Monday, January 17, 2005
<i>Memorial Day</i>	Monday, May 30, 2005

—Division of Human Resources

## HR: Staff Development

Take advantage of the many programs offered by Human Resources to help further your professional and personal development. The Learning and Education (L&E) department is promoting several programs in the coming months as listed below. Visit the Human Resources web site at [www.hr.upenn.edu/learning/](http://www.hr.upenn.edu/learning/) for descriptions of the programs and to pre-register online. Registration is required.

### Learning and Education programs

Learn valuable skills through American Management Association (AMA) programs, Brown Bag Matinees, Satellite Broadcasts, and other programs. For questions on L&E programs, call (215) 898-3400 or visit [www.hr.upenn.edu/learning/](http://www.hr.upenn.edu/learning/).

Tuesday, July 15, noon–1 p.m.

*Back to School, Part 1*—A Panel Presentation by Penn staff (Brown Bag)

Friday, July 18, noon–1 p.m.

*Back to School, Part 2*—Continuing Education Open House (Brown Bag)

Wednesday, July 23, noon–1 p.m.

*Think or Sink* (Brown Bag)

Friday, July 25, 9 a.m.–noon

*Proactive Conflict Resolution*

Wed., July 30, Fri., Aug. 1, and Tues., Aug. 5, 9 a.m.–noon

*Words at Work—The Latest In Business Writing*

Thursday, July 31, 9 a.m.–5 p.m.

*Project Management* (Franklin Covey)

Wed., Aug. 6 and Thurs., Aug. 7,

9 a.m.–5 p.m. *The Essential Administrative Professional* (AMA program) 2-day program

Wednesday, Aug 13, 9 a.m.–5 p.m.

*What Matters Most* (Franklin Covey)

Thursday, August 14, noon–1 p.m.

*Legal Peril* (Brown Bag)

—Division of Human Resources

## EHRs Training July & August

Training is required by the US Department of Labor's Occupational Safety & Health Administration (OSHA) for all employees who work with hazardous substances including: chemicals, human blood, blood products, fluids, and human tissue specimens. Training is also required by the Nuclear Regulatory Commission (NRC) for all personnel using radioactive materials or radiation producing equipment at the University and affiliated institutions.

Training programs are developed and presented by the Office of Environmental Health & Radiation Safety (EHRs) in monthly live presentations or online formats. To determine which training programs are required, review "Training Requirements." on the EHRs web site [www.ehrs.upenn.edu/training/index.html](http://www.ehrs.upenn.edu/training/index.html).

**Note:** All staff and faculty must attend a session of introductory training as soon as possible after hire. Annual update training can be completed on-line, after attending an introductory session first.

Upcoming live training programs are:

*Introduction to Laboratory Safety at Penn (Chemical Hygiene Training):* Required for all Penn faculty and staff who work in laboratories. No admittance after 9:30 a.m. Penn ID or driver's license is required for sign-in. *July 16, August 4, or August 21, 9:30 a.m., John Morgan Building, Class of 62 Room.*

*Introduction to Occupational Exposure to Bloodborne Pathogens:* Required for all faculty and staff potentially exposed to human blood and blood products, human body fluids and tissues or who work with any bloodborne pathogens. Penn ID or driver's license is required for sign-in. *July 16, or Aug 4, or Aug 21, at 10:45 am, John Morgan Building, Class of 62 Room.*

### Two Events in August to Benefit Cancer Center

The 11th Annual Jay Sigel Invitational Golf Tournament will be held on August 11, at the Aronimink Golf Club in Philadelphia. Proceeds will benefit the prostate cancer treatment and research program of the Leonard and Madlyn Abramson Family Center Research Institute. Schedule of events includes a golf tournament, the best of two balls of foursome, cocktails and silent auction, and an awards dinner and live auction. Registration begins at 10 a.m. For more information about sponsorship or joining the tournament, please call the Event Office at (610) 239-2700.



On August 18 is the Paul R. Nardoni Foundation Annual Golf Tournament. This foundation supports the Abramson Cancer Institute and other regional medical facilities. The tournament will be held at Stanton Ridge Golf and Country Club in Whitehouse Station, NJ with 10 a.m. registration and 5 p.m. dinner. For ticket information, e-mail [info@paulnardonifoundation.org](mailto:info@paulnardonifoundation.org).

### Cyclists & Volunteers for MS Ride

The UPHS Cycling Team is looking for riders and volunteers to participate in the MS 150 City to Shore Bike Tour, Saturday and Sunday, September 20 & 21, a charity ride to benefit the National Multiple Sclerosis Society.

The two-day event starts at the Woodcrest station of the Lindenwold High Speed Line in Cherry Hill, travels some of the most scenic roads of south Jersey, and ends at the beach in Ocean City. The second day, the route is reversed, ending at the Woodcrest station. The traditional route is 75 miles each day. However, on Saturday there is an optional 45-mile ride that starts in Hammonton and ends in Ocean City. For a greater challenge, there is an optional 100-mile Century Route on Saturday.

The route is supported with rest stops, refreshments, and road support services.

Participants must submit a registration form with a registration fee of \$40 until 8/30; \$45 until 9/12; \$50 until 9/19; and \$60 day of event. Each rider is required to raise a minimum of \$200 in additional donations.

Riders who raise and turn in a minimum of \$200 to the National MS Society by August 15 will receive a UPHS Team Cycling Jersey. There will be a pre-ride UPHS Team dinner the evening before the ride at the Spaghetti Warehouse, and a post-ride party.

To register online, visit [www.ms150biketour.org/city2shore/index.htm](http://www.ms150biketour.org/city2shore/index.htm). Please remember to indicate UPHS Team. Paper registration forms and brochures can be obtained from UPHS Team Captain, Emily Silvis, of Patient Registration. Dr. Stephen Kolb, of Neurology, is Co-Captain. For information, go to [www.home.earthlink.net/~uphsteam](http://www.home.earthlink.net/~uphsteam) or call Emily at (215) 615-2378, or e-mail [uphsteam@earthlink.net](mailto:uphsteam@earthlink.net). Anyone can participate. Riders are not required to work for Penn.

# Update

SUMMER AT PENN

## CONFERENCE

**8/6** *Invasive Plant Conference*; learn how invasive plants are impacting the environment; Morris Arboretum; \$150; register: (215) 247-5777 ext.159 (Mid-Atlantic Exotic Pest Plant Council; Arboretum; Nature Conservancy). *Through August 7.*

## EXHIBITS

**7/16** *Summer Open Video Call*; first 20 students to submit VHS at 8:30 p.m. accepted; 9 p.m.; ICA (ICA).

### Now

*Show for the City: Art by The Youth of West Philadelphia*; showcases area arts and culture; Slought Foundation. *Through August 4.*

*Technologies of Religion: The Printing of Biblical Texts & Commentary, 1486-1632*; leafs and incunabuli illustrating the dependency of religion in the 1500s on printing technologies; Slought Foundation. *Through August 4.*

*Painting, Collage, and Mixed Media*; work by two artists; Burrison Gallery. *Through August 14.*

## FITNESS/LEARNING

**7/19** *Great Plants for Your Home Garden Tour*; 1 p.m.; Morris Arboretum; free with garden admission. *Also July 26.*

**7/30** *Direct Deposit Fair*; sign up for direct deposit of paycheck with bank incentives from local banks; prizes; 11 a.m.-2 p.m.; Hall of Flags, Houston Hall (Treasurer's Office).

**8/19** *Doing the SEPTA Shuffle (Public Transportation Seminar)*; 3:30-4:30 p.m. (GSC) *Also August 25, 5:30-6:30 p.m.*

**8/20** *Living Safely, a Penn Presentation*; 5:30-6:30 p.m.; GSC.

### Technology Training Services

See [www.its.isc.upenn.edu](http://www.its.isc.upenn.edu).

**7/16** *Access 2000 Intro*; \$357. *Through 7/17.*

**7/18** *PowerPoint 2000 Intro*; \$190. *Also 8/14.*

**7/21** *Fireworks MX Intro*; \$600. *Through 7/22.*

## New Triplets On Campus

Last month, the University set out 21 "Triplet" Recycle Bins around campus, an investment in Penn's continuing leadership on environmental issues. Working with concerned students from the Penn Environment Group, Facilities and Real Estate Services developed the new prototype receptacles to handle trash, paper, and co-mingled glass, aluminum, and plastic. Since their installation, they have virtually eliminated contamination in recycling containers in outdoor locations.

To ensure follow-through by Penn's custodial staff, the bags in the new Triplets are coded: brown for trash, and clear for paper and co-mingled bottles and cans. All three bags are loaded into wheeled totes, and brought to one of a dozen recycle stations, where recyclables are separated out. Several times a week, Penn rear-loading garbage trucks empty all the dumpsters, and the bottles, cans and paper are delivered to off-campus recycling centers.

Please help us make the most of our new Triplets. Any type of clean paper, including cardboard, is acceptable in the paper slot. The aluminum, glass, and plastic bin is for recyclable bottles and cans—please, no plastic wrap, yogurt containers, or plastic packaging. (Our recycling centers only want bottles and cans, and don't have a use for other types of plastic.)

**7/23** *Excel 2000 Intermediate*; \$190. *Also 8/25.*

**7/24** *Photoshop 6.0 Web Graphics*; \$520; *Through 7/25.*

**7/28** *Word 2000 Intermediate*; \$190. *Also 8/19.*

**7/29** *PowerPoint 2000 Intermediate*; \$190. *Also 8/28.*

*Flash MX Advanced*; \$600.

**7/30** *Crystal Reports 8.5 Intro*; \$529. *Through 7/31.*

*Word 2000 Advanced*; \$190.

**7/31** *Excel 2000 Advanced*; \$190.

**8/1** *Fireworks MX Advanced*; \$375.

**8/5** *HTML Fundamentals*; \$520; *Through 8/6.*

**8/7** *PowerPoint XP Intermediate*; \$190.

**8/8** *Excel 2000 Introduction*; \$190.

**8/11** *Dreamweaver MX Power User*; \$375.

**8/12** *Dreamweaver MX Advanced*; \$600. *Through 8/13.*

**8/15** *FilemakerPro Intermediate*; \$190.

**8/18** *Access 2000 Advanced*; \$448. *Through 8/19.*

**8/20** *Flash MX Introduction*; \$600; *Through 8/21.*

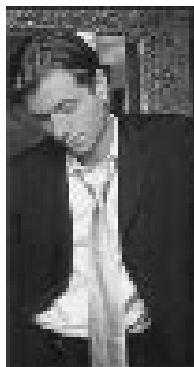
**8/22** *HTML Advanced*; \$247.

**8/26** *Access XP Advanced*; \$448. *Through 8/27.*

## MUSIC

**7/31** *A Midsummer Private Concert with Peter Cincotti*; jazz pianist and singer; 8 p.m.; Widener Hall, Morris Arboretum; \$250, \$150, \$100; Call Jessica at (215) 898-6702 or [andersel@ac.upenn.edu](mailto:andersel@ac.upenn.edu) (Annenberg Center; Arboretum).

A protégé to popular artist Harry Connick, Jr., at the age of 7, Peter Cincotti (right) is a vocalist and pianist "going on to legend" according to *The New York Times*. He made his Philadelphia debut at the Annenberg Center in March 2003. His "private" July 31 concert at the Morris Arboretum is a fundraiser to benefit children's programs at the Annenberg Center and at the Arboretum.



## TALKS

**7/15** *Cancer Vaccines Targeting Dendritic Cells in Vivo*; Mario Colombo, National Cancer Institute; 3 p.m.; Grossman Auditorium, Wistar Institute (Wistar).

**7/16** *All's Well that Ends Well?: Studies Examining Patients Who Are Discharged from Hospice*; Jennifer Kapo, medicine; noon; Center for Bioethics (Center for Bioethics).

**7/28** *SARS: Intersection of Public Health, Epidemiology and Clinical Nursing*; Gabriel Leung, Sophia Siu-Chee Chan University of Hong Kong; 12:30 p.m.; rm. 216, Nursing Education Bldg.; RSVP: Tammi Worsham [tammiw@nursing.upenn.edu](mailto:tammiw@nursing.upenn.edu) by July 18 (Hartford Center or Geriatric Nursing Excellence; RAND/Hartford Center for Interdisciplinary Geriatric Health Care Research).

**7/30** *Innovations in Smoking Cessation Counseling: Identification of Training Needs and Program Development for Elderly Clients*; Gabriel Leung, Sophia Siu-Chee Chan, University of Hong Kong; 1 p.m.; rm. 216, Nursing Education Bldg.; RSVP: Tammi Worsham [tammiw@nursing.upenn.edu](mailto:tammiw@nursing.upenn.edu) by July 18 (Hartford Center or Geriatric Nursing Excellence; RAND/Hartford Center for Interdisciplinary Geriatric Health Care Research).

### Deadlines:

The next issue of *Almanac* is scheduled for *Tuesday, September 2*. The deadline for that issue is *Monday, August 18*. The deadline for the September AT PENN calendar is *Tuesday, August 12*. For information see [www.upenn.edu/almanac/calendar/caldead-real.html](http://www.upenn.edu/almanac/calendar/caldead-real.html).

### Get On Board Express Almanac

Sign up to receive e-mail notification when we post breaking news between issues. Send an e-mail message with "subscribe" as the Subject to [almanac@pobox.upenn.edu](mailto:almanac@pobox.upenn.edu) and include your name, e-mail address and mailing address. —Ed.

Triplet locations are along Locust Walk (at the Class of 1920 Commons, Huntsman Hall, the Class of '59 Plaza and across from Steinberg Dietrich), in the Hamilton Village and on College Green, on Woodland Walk behind Steinberg-Dietrich, on the Fine Arts Plaza outside Meyerson, in Perleman Plaza and by the tables adjacent to Irvine, at University Square and Pottruck Fitness Center, on Hamilton Walk by the Johnson Pavilion, at Chancellor Walk outside Levine Hall, by the Palestra Tennis Courts, and adjacent to Franklin Field at 33rd and Spruce.

What are the benefits? Recycling saves Penn about 2,000 tons of landfill trash annually, giving us one of the highest rates of recycling for any institution in the state. This translates into reduced tipping charges at landfills and a host of other benefits. For more information on Penn's environmental initiatives, visit the website at [www.facilities.upenn.edu/environment/](http://www.facilities.upenn.edu/environment/).

—Daniel Garfalo, Senior Facilities Planner



*Penn is now home to some 21 new Triplets that have recently been placed throughout the campus, including this trio (above) which is at the Class of '59 Plaza, at 37th and Locust Walks.*

## A Peek at Penn's Past

(culled from old issues of Almanac)

### Summer in Penn's History

10 Years Ago

7/13/93—The Hon. Walter H. Annenberg, alumnus and longtime trustee made history with his announcement of \$120 million gift to Penn—the largest gift ever given to Penn and the largest cash gift ever made to a university.

7/13/93—The transformation of PennMed into the University of Pennsylvania Health System (UPHS).

7/13/93—The campus bid farewell to President Sheldon Hackney, Provost Michael Aiken, and Senior Vice President Rick Nahm.

20 Years Ago

7/12/83—Trustees passed a resolution to name the GSFA building after President Emeritus Martin Meyerson and unveiled a portrait of him.

7/12/83—The Trustees adopted *Building Penn's Future*, the Development report which targeted five core areas: endowed professorships, research and scholarly resources, student financial assistance, campus life facilities and selective innovation.

30 Years Ago

July 1973—James O. Freedman, professor of law, was appointed Ombudsman, succeeding Penn's first Ombudsman Dr. Joel Connarroe who had been appointed in 1971.

July 1973—Seventy new lights installed to illuminate campus walks and buildings with 19 more to be installed in the Superblock area by September.

July 1973—In order to conserve electricity, the campus community was encouraged to "keep thermostats as high in the summer and as low in the winter as comfort allows. It is estimated that the difference may be as much as \$50,000 per degree per year at this University."

## Telecommunications Alert: Possible Verizon Work Stoppage

Verizon is in the midst of a collective bargaining process with their unions to reach an agreement before contracts expire at midnight on August 2, 2003. It is possible that the unions will go on strike, which would impact ISC Networking and Telecommunication's ability to deliver some types of phone service to the University community.

It is important to note that your current phone service should not be affected by a strike. New service and repair requests, however, will likely be delayed as we may not be able to rely on Verizon for quick turnaround service. To that end, we have reserved additional phone service in many areas of campus in the event that customers lose their current phone service. Please keep in mind that critical service lines (supporting systems such as fire alarms) will continue to receive our highest priority.

While Verizon will make every effort to maintain service standards currently in place, it is our expectation that response to all service orders and repairs will be slow. Our office will continue to advise our customers on progress, problems, and other strike related issues as they occur. We are dedicated to providing the University community with excellent customer service.

For more information, call our help line at (215) 898-4840 or view further Verizon work stoppage information online at: [www.upenn.edu/telecom/strikeinfo.htm](http://www.upenn.edu/telecom/strikeinfo.htm).

—ISC Networking and Telecommunication

## CLASSIFIEDS—UNIVERSITY

### RESEARCH

**Do you have arthritis in your knees?** Would you like to participate in a study designed to find out if acupuncture may help you walk better and decrease the pain? The study compares real acupuncture with acupuncture using needles that do not puncture the skin in patients who need physical therapy. Call Pat Williams for more information at (215) 898-3038.

**Are you taking estrogen replacement?** Volunteers are needed for an osteoporosis research study. If you are between the ages of 45 and 55 and are taking or would like to take estrogen replacement for menopause, you may be eligible to participate. Participants are compensated. For more information, call (215) 898-5664.

**Have your senses tested!** Earn \$100 for 7 hours of testing. What will you gain? A comprehensive assessment of your senses—smell, taste, hearing, balance, and cognitive function. Personal satisfaction by participating in MS-related research. Only through the accumulation of such knowledge are advances made in the diagnosis and treatment of this disease. Contact: The Smell and Taste Center. Phone: (215) 662-6580. University of Pennsylvania Medical Center.

Do you have a **family history of heart disease?** Then you may want to take part in the Penn Family Heart Study at the University of Pennsylvania Medical Center. Doctors at Penn are studying the inherited causes of early heart disease. If you have family history of early heart problems, you're invited to join this important study. You will have a free ultrafast CT scan, an exciting test that can determine the amount of coronary plaque build-up completely non-invasively. You will also have free blood tests related to the risk of heart disease. The whole thing only takes an hour and will cost you nothing. This study may determine if you are at risk for a future heart attack. If you have a family history of heart disease volunteer to help Penn doctors learn more about causes and treatments of heart disease. Call toll-free 1-888-81-HEART.

**Calling Type 2 Diabetics.....**If you are at least 35 years old and would like to participate in a research study of an investigational drug that is being studied as a possible treatment for diabetic complications, please call (215) 662-4635 for more information. Compensation will be provided for your time and travel expenses.

Almanac is not responsible for contents of classified ad material.

To place a classified ad, call (215) 898-5274.

## The University of Pennsylvania Police Department Community Crime Report

**About the Crime Report:** Below are all Crimes Against Persons and Crimes Against Society from the campus report for **June 30-July 6, 2003**. Also reported were 14 Crimes Against Property (including **12 thefts, 1 burglary and 1 act of vandalism**). Full reports are on the Web ([www.upenn.edu/almanac/v50/n01/crimes.html](http://www.upenn.edu/almanac/v50/n01/crimes.html)). Prior weeks' reports are also online. —Ed.

This summary is prepared by the Division of Public Safety and includes all criminal incidents reported and made known to the University Police Department between the dates of **June 30-July 6, 2003**. The University Police actively patrol from Market Street to Baltimore Avenue and from the Schuylkill River to 43rd Street in conjunction with the Philadelphia Police. In this effort to provide you with a thorough and accurate report on public safety concerns, we hope that your increased awareness will lessen the opportunity for crime. For any concerns or suggestions regarding this report, please call the Division of Public Safety at (215) 898-4482.

06/30/03	8:45 AM	4201 Walnut St	Male on premises without authorization/Arrest
06/30/03	10:23 PM	3400 Spruce St	Employee threatened by fellow employee
07/03/03	10:40 AM	3600 Hamilton Walk	Unauthorized charges to account
07/06/03	12:09 AM	51 N 39 St	Complainant assaulted by known male
07/06/03	8:04 PM	4001 Walnut St	Male using stolen credit card/Arrest

### 18th District Report

11 incidents and 1 arrest (including 7 robberies and 4 aggravated assaults) were reported between **June 30-July 6, 2003** by the 18th District covering the Schuylkill River to 49th St. & Market St. to Woodland Ave.

07/01/03	10:00 AM	3850 Woodland Ave	Aggravated Assault/Arrest
07/01/03	7:49 PM	1123 47th St	Robbery
07/02/03	10:00 AM	4700 Warrington Ave	Aggravated Assault
07/02/03	11:00 AM	5117 Chestnut St	Robbery
07/03/03	5:00 AM	4500 Sansom St	Robbery
07/03/03	12:08 PM	5100 Sansom St	Robbery
07/03/03	4:00 PM	131 48th St	Robbery
07/03/03	9:00 PM	4000 Baltimore Ave	Robbery
07/04/03	4:30 PM	1009 47th St	Aggravated Assault
07/05/03	2:00 AM	4500 Kingsessing Ave	Robbery
07/05/03	10:20 PM	4800 Market St	Aggravated Assault



Almanac

Suite 211 Nichols House  
3600 Chestnut Street, Philadelphia, PA 19104-6106  
Phone: (215) 898-5274 or 5275 FAX: (215) 898-9137  
E-Mail: [almanac@pobox.upenn.edu](mailto:almanac@pobox.upenn.edu)  
URL: [www.upenn.edu/almanac/](http://www.upenn.edu/almanac/)

The University of Pennsylvania's journal of record, opinion and news is published Tuesdays during the academic year, and as needed during summer and holiday breaks. Its electronic editions on the Internet (accessible through the PennWeb) include HTML and Acrobat versions of the print edition, and interim information may be posted in electronic-only form. Guidelines for readers and contributors are available on request and online.

EDITOR Marguerite F. Miller  
ASSOCIATE EDITOR Margaret Ann Morris  
ASSISTANT EDITOR Natalie S. Woulard  
WPHS INTERN Jamar Benyard

ALMANAC ADVISORY BOARD: For the Faculty Senate, Martin Pring (Chair), Helen Davies, Mitchell Marcus, Phoebe Leboy, Lance Donaldson-Evans, Joseph Turow. For the Administration, Lori N. Doyle. For the Staff Assemblies, Michele Taylor, PPSA; Karen Pinckney, WPSA; David N. Nelson, Librarians Assembly.

The University of Pennsylvania values diversity and seeks talented students, faculty and staff from diverse backgrounds. The University of Pennsylvania does not discriminate on the basis of race, sex, sexual orientation, religion, color, national or ethnic origin, age, disability, or status as a Vietnam Era Veteran or disabled veteran in the administration of educational policies, programs or activities; admissions policies; scholarship and loan awards; athletic, or other University administered programs or employment. Questions or complaints regarding this policy should be directed to Jeanne Arnold, Executive Director, Office of Affirmative Action, 3600 Chestnut Street, 2nd floor, Philadelphia, PA 19104-6106 or (215) 898-6993 (Voice) or (215) 898-7803 (TDD).

## University of Pennsylvania Three-Year Academic Calendar, 2003-2004 through 2005-2006

Fall		2003 Fall Term	2004 Fall Term	2005 Fall Term
Move-in and registration for Transfer Students	Wednesday	August 27	September 1	August 31
Move-in for first-year students	Thursday	August 28	September 2	September 1
New Student Orientation	Thursday-Tuesday	Aug 28-Sep 2	September 2-7	September 1-6
Labor Day	Monday	September 1	September 6	September 5
New Student Convocation and Opening Exercises	Tuesday	September 2	September 7	September 6
First Day of Classes	Wednesday	September 3	September 8	September 7
Add Period Ends	Friday	September 19	September 24	September 23
Drop Period Ends	Friday	October 10	October 15	October 14
Fall Term Break	Saturday-Tuesday	October 11-14	October 23-26	October 15-18
Family Weekend	Friday-Sunday	October 24-26	October 29-31	October 21-23
Homecoming	Saturday	November 8	October 16	November 5 (Princeton)
Advance Registration, Spring Term	Monday-Sunday	October 27-Nov 9	November 1-14	October 31-November 13
Thanksgiving Break Begins at close of classes	Wednesday	November 26	November 24	November 23
Thanksgiving Break Ends 8 a.m.	Monday	December 1	November 29	November 28
Fall Term Classes End		December 8 (Mon)	December 10 (Fri)	December 9 (Fri)
Reading Days	Tuesday-Thursday	December 9-11	December 11-14 (Sat-Tues)	December 10-13 (Sat-Tues)
Final Examinations		December 12-19 (Fri-Fri)	December 15-22 (Wed-Wed)	December 14-21 (Wed-Wed)
Fall Semester Ends		December 19 (Fri)	December 22 (Wed)	December 21 (Wed)
Spring		2004 Spring Term	2005 Spring Term	2006 Spring Term
Spring Semester classes begin	Monday	January 12	January 10	January 9
Martin Luther King, Jr. Day (observed; no classes)	Monday	January 19	January 17	January 16
Add Period Ends	Friday	January 23	January 21	January 20
Drop Period Ends	Friday	February 13	February 11	February 10
Spring Break Begins at Close of Classes	Friday	March 5	March 4	March 3
Classes Resume at 8 a.m.	Monday	March 15	March 14	March 13
Advance Registration for Fall and Summer Sessions	Monday-Sunday	March 22-April 4	March 21-April 3	March 20-April 2
Spring Term Classes End	Friday	April 23	April 22	April 21
Reading Days	Monday-Wednesday	April 26-28	April 25-27	April 24-26
Final Examinations	Thursday-Friday	April 29-May 7	April 28-May 6	April 27-May 5
Alumni Day	Saturday	May 15	May 14	May 13
Baccalaureate	Sunday	May 16	May 15	May 14
Commencement	Monday	May 17	May 16	May 15
Summer		2004 Summer	2005 Summer	2006 Summer
12-Week Evening Session classes begin	Monday	May 17	May 16	May 15
First Session classes begin	Tuesday	May 18	May 17	May 16
Memorial Day (no classes)	Monday	May 31	May 30	May 29
First Session classes end	Friday	June 25	June 24	June 23
Second Session classes begin	Monday	June 28	June 27	June 26
Independence Day (no classes)		July 5 (Mon)	July 4 (Mon)	July 4 (Tues)
Second Session; 12-Week Evening Session classes end	Friday	August 6	August 5	August 4

**Note:** The University's Three-Year Academic Calendar is subject to change. In the event that changes are made, the latest, most up-to-date version will be posted to Almanac's web site, [www.upenn.edu/almanac](http://www.upenn.edu/almanac).