



Make merry this holiday season with Irish Christmas in America at the Annenberg Center. See Music.

ACADEMIC CALENDAR

- 11 Last day of classes.
- 12 Reading days. Through December 13.
- 14 Final examinations. Through December 21.
- 21 Fall Term ends.

CHILDREN’S ACTIVITIES

Peanut Butter and Jams
Tickets: \$10.05; info: worldcafelive.com
Doors: 10:30 a.m. Shows: 11 a.m.

2 The Cat’s Pajamas Album Release Spectacular!

Penn Museum
Prices and register: www.penn.museum

1 40 Winks with the Sphinx Museum Sleepover; ages 6-12; 5:30 p.m.-9 a.m.

5 Museum Playdate: Solstice Celebration; ages 3-5; 10:30-11:30 a.m.

9 Second Saturdays: Winter Solstice; 11 a.m.

Morris Arboretum
Prices, info & register: www.morrisarboretum.org

8 Free Storytime at the Arboretum; 10:30 a.m.

9 Kids Holiday Cookies; ages 6-10; 1 p.m.

17 Kids Holiday Centerpieces; ages 6-12; 10:30 a.m.

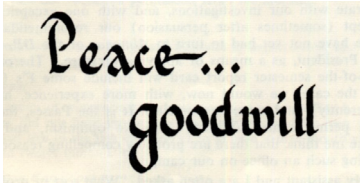
CONFERENCES

- 5 CT3N Symposium; 8:15 a.m.-6:20 p.m.; Gaulton Auditorium and Lobby, BRB; free/Students and Academia, \$100/ Industry; register: <https://upenn.irisregistration.com/Form/CT3N2017> (Penn Engineering).
- 13 Jews and the Natural World: Bodies, Animals, Evolution; 9:30 a.m.-7:30 p.m.; Katz Center for Advanced Judaic Studies; RSVP by December 6: carrielo@upenn.edu (Katz Center).
- 17 The Culture of Cultivation: Designing with Agriculture; 10:45 a.m.; Meyerson Hall; register: <http://bit.ly/2hnZTRG> Through November 18 (PennDesign).

EXHIBITS

Admission Donations and Hours
Arthur Ross Gallery (ARG): Fisher Fine Arts Library; free; hours: arthur-rossgallery.org
Burrison Gallery: Inn at Penn; free; Mon.-Fri., 7:30 a.m.-5 p.m.; tinyurl.com/kaevlec
EKG: free; Mon.-Sat., 9 a.m.-5 p.m.; estherkleingallery.tumblr.com/
ICA: free; hours: www.icaphila.org
International House; free; hours: ihousephilly.org/
Kroiz Gallery, Fisher Fine Arts Library; free; Mon.-Fri., 9 a.m.-4 p.m.; <http://tinyurl.com/hvrlct4>
Morris Arboretum: Mon.-Sun., hours, prices: [morrisarboretum.org](http://www.morrisarboretum.org)
Penn Museum: \$15/adults; \$13/ seniors; \$10/children; free/members, PennCard holders and children under 5; Tues.-Sun., 10 a.m.-5 p.m.; first Wed., 10 a.m.-8 p.m.; www.penn.museum
Slought; free; Tues.-Fri., noon-5 p.m.; slought.org
Van Pelt-Dietrich Library; free; hours: <http://tinyurl.com/hwd74bp>
Wistar; free; Mon.-Fri., 9 a.m.-5 p.m.

Now
A View of One’s Own; Arthur Ross Gallery. Through December 10.
The Worlds Between: An Exploration of Magic, Folklore, and the Occult; Van Pelt-Dietrich Library. Through December 15.
Local Landscapes by Lisa Learner; Burrison Gallery, 2nd floor, Inn at Penn; reception: December 1, 5-7 p.m. Through December 20.
Intertwined Worlds; Kislak Center, Van Pelt-Dietrich Library. Through December 22.
Speech/Acts; ICA. Through December 23.
Objects Speak: Media through Time; Penn Museum. Through March 4.
What in the World? Early Television Meets the World of Archaeology, 1950-1966; Penn Museum. Through March.



Moundbuilders: Ancient Artifacts of North America; Penn Museum. Through July.
Bearing Witness: Four Days in West Kingston; Penn Museum. Through July 15.
Ongoing
Audubon’s Birds of America; Information Desk, Van Pelt-Dietrich Library.
Heaven on Earth: Churches of Constantinople: The Photography of Ahmet Ertug; Penn Museum.
Marian Anderson on the World Stage; Marian Anderson Gallery, Van Pelt-Dietrich Library.
Native American Voices: The People - Here and Now; Penn Museum.
We Are Not Alone; Annenberg School of Communication.
Penn Museum Tours
Tours on Fridays, Saturdays and Sundays; 1:30 p.m.; Kamin entrance; free w/admission; info: www.penn.museum

FILMS

- New Italian Cinema Studies**
Free; International House; in Italian. Info: cinemastudies.sas.upenn.edu
- 1 There is a Light; 3 p.m.
 - Friends by Chance; 5:30 p.m.
 - After the War; 8:30 p.m.
 - 2 Children of the Night; 3 p.m.
 - Holding Hands; 5:30 p.m.
 - Pure Hearts; 8:30 p.m.
 - 3 Indivisible; 3 p.m.
 - At War for Love; 5:30 p.m.
 - Fortunate; 8:30 p.m.
- International House (I-House)**
Prices & info: <http://ihousephilly.org>
Unless noted, all films start at 7 p.m.
- 7 Bob le Flambeur; French.
 - 8 Leon Morin; French.
 - 9 Frankenstein’s Bloody Terror 3-D and Dracula vs. Frankenstein; 8 p.m.
 - 13 Canyon Cinema 50.
 - 14 Le Doulos; French.
 - 15 Army of Shadows; French.
 - 16 Le Cercle Rouge; French; 5 p.m.
 - Un Flic; French; 5 p.m.
 - 29 Rebels on Pointe.

FITNESS AND LEARNING

- 1 Yoga with Anisha; noon; Arthur Ross Gallery; free/Penn students, \$5/all others. Also December 8 (ARG).
- Liberal and Professional Studies**
- 4 Graduate Certificate in Social, Cognitive and Affective Neuroscience (SCAN) On-Campus Information Session; noon; suite 200, Goddard Bldg.; register: www.applyweb.com/fixielform/s/T8k1dfa
- 5 Master of Environmental Studies Virtual Café; noon; register: www.upenn.edu/lps-events
- 7 Master of Applied Positive Psychology; 5 p.m.; register: www.upenn.edu/lps-events

Morris Arboretum
Prices, info & register: www.morrisarboretum.org

- 1 Holiday Wreath Making Workshop; 11 a.m. Also December 2.
- 7 The Living Forest – New Knowledge About the Forest; 2 p.m.
- 9 Holiday Tabletop Tree with Lights; 11 a.m.
- 17 Create a Beautiful Holiday Arrangement for Your Table; 1 p.m.

Professional and Personal Development Programs
Open to faculty and staff. Register at <http://knowledgegelink.upenn.edu/>

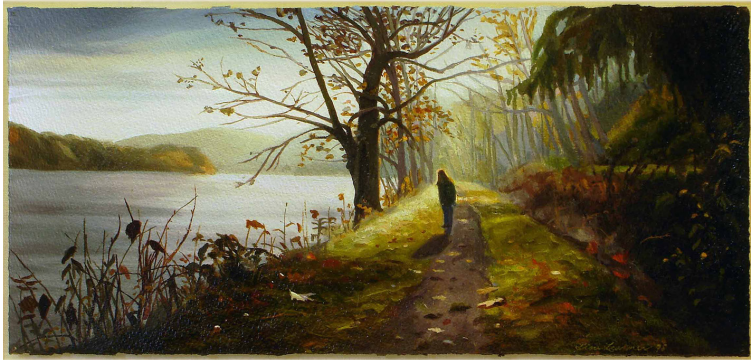
- 1 Designing Your Résumé; 12:30-1:30 p.m.; PSOM; free.
- 12 Penn Perks; 12:30-1:30 p.m.; free.
- 14 Setting SMART Goals; 12:30-1:30 p.m.; free.
- 20 Writing Series Session 4 – Comparison of Business and Academic Writing; 9 a.m.-noon.; \$75.
- Writing Series Session 4 – Comparison of Business and Academic Writing; 1-4 p.m.; PSOM; \$75.
- Productive Work Habits; 12:30-1:30 p.m.; free.

Quality of Work Life Workshops
Open to faculty and staff. Register at www.hr.upenn.edu/myhr/registration

- 15 Guided Meditation: Take a Breath and Relax; noon–1 p.m.; free.
- 18 Mindfulness Monday: From Mind Full to Mindful; 12:30–1:30 p.m.; free.
- 19 Emotional Composure – Remaining Unruffled and Dynamic Under Stress; 3 p.m.; free.

Healthy Living Workshops
Open to faculty and staff. Register at www.hr.upenn.edu/myhr/registration

- 1 Be in the Know Biometric Screenings; 9 a.m.-2 p.m.; free for benefits-eligible faculty and staff.
- 5 Gentle Yoga; noon; Studio 414. Also December 19.



Riverwalk by Lisa Learner, at the Burrison; reception December 1. See Exhibits.



The Holiday Garden Railway Display at the Morris Arboretum, through December 31 (closed December 24 and 25) has a quarter mile of track featuring seven loops and tunnels with 15 different rail lines and two cable cars, nine bridges (including a trestle bridge you can walk under) and bustling model trains. See Special Events.

December

AT PENN

Wherever this symbol appears, more images are available on our website, www.upenn.edu/almanac

- 13 Chair Yoga; noon-1 p.m.; free.
- 14 Spinning; 11:30 am; Studio 306.
- 15 December Wellness Walk—walk with a future doc; noon-1 p.m.; free.
- 20 ZUMBA; noon.; free.

MEETINGS

- 6 University Council Meeting; 4 p.m., Bodek Lounge, Houston Hall.
- 8 PPSA Board Meeting; open to any monthly-paid exempt staff; noon-1 p.m.; Penn Museum; RSVP: ppsas@exchange.upenn.edu
- 12 WXPN Policy Board Meeting; noon; WXPN, 3025 Walnut St.; info: (215) 898-0628

MUSIC

- 2 Holiday Concert with the Penn Glee Club; Glee Club’s holiday repertoire; hot cocoa and cookies in the garden; 2-3 p.m.; Morris Arboretum; free w/admission (Arboretum).
 - Penn Symphony Orchestra and Chamber Ensemble; 8 p.m.; Irvine Auditorium (Penn Music Department).
 - 3 Penn Flutes; performance group; 2-3 p.m.; Hall of Flags, Houston Hall; free (Penn Music Department).
 - Ancient Voices; performance group; 3-5 p.m.; Amado Recital Hall, Irvine Auditorium; \$5 general admission, free w/Penn Card (Penn Music Department).
 - 8 University Choral Society; 8 p.m.; Irvine Auditorium; \$5 general admission, free w/ Penn Card (Penn Music Department).
- Annenberg Center**
Tickets: www.annenbergcenter.org
- 7 An Evening with David Rawlings; acoustic singer-songwriter; 7:30 p.m.; Zellerbach Theater.
 - 9 Irish Christmas in America; Irish and Scottish holiday ballads and Irish dancing; 8 p.m.; Zellerbach Theater.
 - 10 Canadian Brass: Christmas Time is Here; a mix of holiday standards and upbeat festive tunes; 2 p.m.; Zellerbach Theater.
- World Café Live**
Performances daily. For a complete listing, see: <http://lphilly.worldcafelive.com/>

ON STAGE

Tickets: www.annenbergcenter.org

- 18 Moscow Ballet’s Great Russian Nutcracker; 7 p.m.; Zellerbach Theatre, Annenberg Center; (Annenberg Center Live).

READINGS AND SIGNINGS

Kelly Writers House
Unless noted, all events take place in the Arts Café.
RSVP: wh@writing.upenn.edu

- 1 PoemTalk; Amiri Baraka; noon.
- 4 Penn and Pencil Club Reading; 6 p.m.
- 5 NourbeSe Philip and Kyoo Lee; 6 p.m.
- 8 Penn Plays Fellowship Reading; 10:30 a.m.

Penn Bookstore
4 John Getchell-Sign of the Apocalypse; 6 p.m.

Penn Book Center
6 Eve Ewing, Electric Arches; 6 p.m. (English, Africana Studies, ICA).

SPECIAL EVENTS

- 5 Get Lost: Working Dog Center Tour; 2-3 p.m.; Working Dog Center, Pennovation Works; free; register: (215) 898-2200 (PennVet).
- 7 Penn Bookstore Sale-A-Bration; 2-6 p.m.; savings, photo booth, and refreshments, also at Computer Connection (Business Services). Also December 8.
- 12 Hanukkah Party; 5-6 p.m.; Hillel.
- 13 University Club Holiday Party; 4-7 p.m.; Harrison Room, Inn at Penn; open to University Club members and one guest (University Club).
- 14 Philanthropic Event: Holiday Open House; noon-4 p.m.; Houston Hall (PPSA).
- 21 Up & Over, Under & Through: Working Dog Center Tour; 10-11 a.m.; Working Dog Center, Pennovation Works; free; register: (215) 898-2200 (PennVet).

Penn Museum
Prices, info & register: www.penn.museum

- 3 Celebrations Around the World; 11 a.m.-4 p.m.; free.
- 5 Ancient Brews: Rediscovered and Recreated; 6 p.m.; 21+; tickets: \$20, \$15/ members.
- 6 Drum Circle Workshop; 6:30 p.m.; \$15, \$10/members and students. Also December 13.
- 7 DIY Craft Night: Turkish Silk Scarf; 6 p.m.; tickets: \$45.

Morris Arboretum
Prices, info & register: www.morrisarboretum.org

- 1 Holiday Garden Railway Display; 10 a.m.-4 p.m. Through December 31.
- Friday Night Lights; 4:30-7:30 p.m.; register: <http://bit.ly/MAFNLI7> Also December 8, 15, 22, and 29.
- 2 Winter Wellness Walks Saturdays; 10:30 a.m. Also December 9, 6, 23, 30.
- 3 Winter Wellness Walks Sundays; 1 p.m. Also December 10, 17, 31.

SPORTS

Tickets, venues, information: www.pennathletics.com/

- 1 Wrestling vs. Rider; 7 p.m.
- 3 (M/W) Squash vs. St. Lawrence and Williams; 11 a.m.
- 9 (W) Basketball vs. Notre Dame; 1 p.m.
- 10 Wrestling vs. Lehigh; 1 p.m.
- 22 (W) Basketball vs. Rhode Island; 1 p.m.
- 27 (M) Basketball vs. Delaware State; 7 p.m.
- 29 (M) Basketball vs. Toledo; 4 p.m.

Happy Holidays

Almanac

3910 Chestnut St., 2nd Floor
Philadelphia, PA 19104-3111
(215) 898-5274 or 5275 FAX (215) 898-9137
Email: almanac@upenn.edu
URL: www.upenn.edu/almanac

Unless otherwise noted, all events are open to the general public as well as to members of the University. For building locations, call (215) 898-5000, or see www.facilities.upenn.edu or the University’s website, www.upenn.edu A phone number normally means tickets, reservations or registration required.

Almanac carries an Update with additions, changes & cancellations if received by Monday at noon for the following week’s issue. University members may send notices for the Update or January AT PENN calendar.

Events on this calendar are subject to change. More information can be found on the sponsoring department’s website. Sponsors are listed in parentheses.

TALKS

1 Explaining Evolutionary Stasis; Derek Turner, Connecticut College; 11 a.m.; rm. 358, Hayden Hall (Earth and Environmental Science).
The Colonial Construction of Political Orders: Uneven State Formation and its Consequences in South Asia; Adnan Naseemullah, King's College London; noon; CASI, ste. 560, 3600 Market St. (CASI).
Real Returns: State Bonds, Lottery Tickets, and Savings Accounts in the Postwar USSR; Kristy Ironside, McGill University; 2 p.m.; rm. 209, College Hall (History).
Utamaro and the Case of the Snow, Moon, and Flowers Triptych; Julie Davis; 3:30 p.m.; rm. 113, Jaffe Bldg. (History of Art).
4 Mother's Employment Patterns and Consequences for Adolescent Outcomes; Alexandra Killewald, Harvard; noon; rm. 103, McNeil Bldg. (Sociology).
How We Became Environed: Toxic Risks, Evolutionary Theory, and the Transformation of American Environmentalism; Etienne Benson, HSS; 3:30 p.m.; rm. 337, Claudia Cohen Hall (HSS).
Franklin & Hall's Printing Blocks: Anti-Countering Techniques on Mid-Atlantic Colonial Paper Currency; Jessica Linker, Bryn Mawr; 5:15 p.m.; Class of 1978 Pavilion, Kislak Center (Classical Studies).
5 Sticky Droplets and Sinking Bubbles: Curious Physics of Yield-Stress Fluids; Randy Ewoldt, University of Illinois at Urbana-Champaign; 10:45 a.m.; Wu and Chen Auditorium, Levine Hall (MEAM).
Latin American and Latino Studies Seminar; Jairo Moreno, music; noon; Silverstein Forum, Stiteler Hall (Latin American and Latino Studies).
Capitalizing on the Cacophony of Cancer Biology; Michael White, Pfizer Worldwide Research & Development; noon; Glen Gaulton Auditorium, BRB II/III (Wistar).
The Welfare Implications of Risk Adjustment in Imperfectly Competitive Markets; Evan Saltzman, Wharton;

TALKS

3:30 p.m.; rm. 103, McNeil Bldg. (Economics).
Is GLP-1 a Hormone: Whether and When? David D'Alessio, Duke; 4 p.m.; rm. 12-146, Smilow Center (Penn Diabetes).
New Bolton 911: Tales From the Emergency Room; Janet Johnson, Barbara Dallap-Schaer, Maia Aiken, and Louise Southwood, Penn Vet; 6:30 p.m.; New Bolton Center, Kennett Square; RSVP: www.vet.upenn.edu (Penn Vet).
6 Universal Basic Income, Jobs and Politics; Ioana Marinescu, SP2; noon; rm. D26/D27, Caster Bldg. (SP2).
Design and Self-Assembly of Molecular-Mimicking Colloidal Particles; Zhihong Nie, University of Maryland; 3 p.m.; Wu and Chen Auditorium, Levine Hall (Chemical and Biomolecular Engineering).
Experience is Proof: Text versus Observation in Isaac Lampronti's Pahad Yitzhak; Debra Glasberg Gail, New York University; 3:30 p.m.; Herbert D. Katz Center (Religious Studies).
7 Piconewton-sensitive biosensors to investigate molecular forces in cells; Carsten Grashoff, Max Planck Institute; noon; Austrian Auditorium, CRB (Biochemistry and Biophysics).
Medieval Medicine for Modern Infections; Erin Connelly, Penn Libraries; 1 p.m.; Class of '78 Pavilion, Van Pelt-Dietrich Library; RSVP: pasef@pobox.upenn.edu (PASEF).
The Living Forest: New Knowledge About the Forest and New Ideas About How to Save It; Joan Maloof, Salisbury University; 2 p.m.; Widener Visitor Center, Morris Arboretum; tickets: \$15/members, \$20/public; RSVP: education@morrisarboretum.org (Arboretum).
Pseudo Deterministic Algorithms and Proofs; Shafi Goldwasser, MIT; 3 p.m.; Wu and Chen Auditorium, Levine Hall (CIS).
Interesting RNA; Jeremy Wilusz, biological chemistry; 3 p.m.; Carolyn Hoff Lynch Room, Chemistry Bldg. (Chemistry).
Making a Hole: Transcriptional

TALKS

Control of Stomatal Disorder; Keiko Torii, University of Washington; 4 p.m.; Tedorii Family Auditorium, Levin Building (Biology).
Porph. Fr. 381, 382, and 383 Smith: Homerica or Platonica?; Irini Viltanioti, KU Leuven; 4:30 p.m.; rm. 402, Claudia Cohen Hall (Classical Studies).
Speaker Series: Jessica Boon, UNC-Chapel Hill; 4:30 p.m.; rm.204, Claudia Cohen Hall (Religious Studies).
Inclusive Public Leadership: Fundraising for Campaigns; Aubrey Montgomery, Rittenhouse Political Partners; 5:30 p.m.; Spady Room, Fox-Fels Hall; RSVP: <https://www.fels.upenn.edu/event/1393> (Fels).
Systemic Antibiotics to Treat Periodontal Diseases: Do We Have a Cure?; Ricardo Teles, periodontics; 6 p.m.; William W.M. Cheung Auditorium, Penn Dental; RSVP: www.dental.upenn.edu (Penn Dental).
8 Waiting to Be Found: The Citizen Poets of Philadelphia, 1789-1820; Paul Lewis, Boston College; 3 p.m; Wolf Room, McNeil Center for Early American Studies (McNeil Center).
What's in a Name? Signature or Keeping Count? A Close Examination of the Fields from 8th-13th Century Ray in the Penn Museum; Ranata Holod; 3:30 p.m.; rm. 113, Jaffe Bldg. (History of Art).
11 The Mexican Health and Aging Study: Evolution and Research Opportunities Over More Than 15 Years of the Study; Rebecca Wong, UT-Sealy Center on Aging; noon; rm. 103, McNeil Center for Early American Studies (McNeil Center).
The Materiality of Syllabi and the History of Literary Study; Rachel Snagor Buurma, Swarthmore; Laura Heffernan, University of North Florida; 5:15 p.m.; Class of 1978 Pavilion, Kislak Center (Classics).
12 Vincent J. Cristofalo Memorial Lecture: Insulin Signaling and Quality of Life with Age; Coleen Murphy, Princeton; noon; Sarah and Matthew Caplan Auditorium, Wistar Institute (Wistar).

TALKS

Responding to Hurricane Irma's Risks: Choices and Adjustments Over Time; Gabrielle Wong-Parodi, engineering and public policy; noon; Wharton School (Penn Law).
Adipose Tissue Leukocyte Activation and Metabolic Disease; Carey Lumeng, University of Michigan; 4 p.m.; rm. 12-146, Smilow Center (Penn Diabetes).
13 Anthropocene and Animal Studies; Kate Marshall; noon; 2nd Floor Conference Room, Graduate Student Center (English).
14 Invited Speaker Seminar Series; David Gius, Northwestern; noon; rm. 8-146 AB, Smilow Center (Radiation Oncology).
The Media, Putin and Trump; Masha Gessen, journalist; 5 p.m.; Annenberg Public Policy Center (Russian and East European Studies).
16 An Unusual Libation Basin in the Glencairn Museum; Jennifer Houser Wenger, NELC; 3:30 p.m.; rm. 345, Penn Museum; tickets: \$10; \$7/members and faculty/staff; \$5/students; free/children (Museum).
19 Of Mice and Men in the Dietary Manipulation of the Gut Microbiome: The Importance of Human Research; Gary Wu, gastroenterology; 4 p.m.; rm. 12-146, Smilow Center (Penn Diabetes).

Penn's Special Winter Vacation



Each year, the President, Provost and EVP assess the feasibility of observing Penn's traditional Special Winter Vacation. Thus, the Special Winter Vacation granted to faculty and staff will be *December 26, 27, 28 and 29, 2017*. If an employee is required to work to continue departmental operations for part or all of this period, the Special Winter Vacation can be rescheduled for some other time. Staff members who are absent from work either the work day before a holiday, the work day after a holiday or both days will receive holiday pay if that absence is charged to pre-approved paid time off or to sick days substantiated by a written note from the staff member's health care provider. Vacations and holidays for hospital employees or those staff members in collective bargaining units are governed by the terms of hospital policies or their respective collective bargaining agreements.

—Division of Human Resources



2017-2018 Holiday Hours for Penn Services & Facilities

Annenberg Center Box Office: Closed December 22-January 1. Open January 2-5, 10 a.m.-5 p.m. Closed January 6-7. Open January 8-11, 10 a.m.-5 p.m. Regular hours resume January 12.
Arthur Ross Gallery: Closed December 11-January 12. Regular hours resume January 13 with a new exhibit.
Cashier's Office: Closing early on December 21, 2 p.m. Closed, December 22-January 7. Regular hours resume on January 8, 11 a.m.
Department of Residential Services: All residences - EXCEPT Harnwell College House, Harrison College House, Rodin College House, Sansom Place East and Sansom Place West are closed during Winter Break.
Franklin Field: Closed December 24-January 8 for recreational walking and jogging. Open January 9, 11 a.m.-2 p.m.
Hillel: Closed December 25 and January 1. Open 9 a.m.-5 p.m. all other days.
Hilton Inn at Penn: Open and operating on a regular schedule unless otherwise indicated on their website.
Houston Hall: Open December 22, 6:30 a.m.-7 p.m. Open December 23, 6:30 a.m.-2:30 p.m. Closed December 24-January 2. Open January 3-6, 6:30 a.m.-5 p.m. Closed January 7-8. Open January 9-10, 6:30 a.m.-5 p.m. Normal hours resume January 11.
L.U.C.Y. (Loop through University City): Closed December 26 & January 2.
Morris Arboretum: Closed December 24-25 & January 1.
Newman Catholic Center: Closed December 25-January 2.
Office of Software Licensing: Closed December 25-January 1. Regular hours resume January 2.
Parking Office: Closing December 22 at 2 p.m. Reopens January 2 at 8:30 a.m. Contact the Operations office at (215) 898-6933 should you require operational assistance to access your permit facility. December 23-31 (excluding December 25), the Penn Museum & Walnut 40 Garages will be open. All garages closed January 1.
Penn Bookstore: Closed December 25 and January 1. Open 10 a.m. to 5 p.m. on December 24 and 31.
PennCard Center: Closed starting December 25. Reopens at 8:30 a.m. on January 2.
Penn Children's Center: Early closing on December 22 at 3 p.m. Closed December 25 through January 1. Reopens January 2 at 7 a.m.
Penn Computer Connection: Closed December 25 and January 1. Open weekdays, 8:30 a.m. to 5 p.m. and weekends, 10 a.m. to 5 p.m. Early closing at 4 p.m. on December 24 and December 31. Regular hours resume on January 2.

Penn Dining: All residential halls and retail cafes will begin closing on December 21. Please visit www.upenn.edu/dining for more details.
Penn Home Ownership Services: Closed December 25-January 1. Reopens January 2 at 9 a.m.
Penn Ice Rink: Closed December 25 and January 1. Check public skating hours at www.upenn.edu/icerink
Penn Mail Services: Closed December 25. Open 8 a.m.-noon December 26-29. Closed January 1. Regular hours resume January 2.
Penn Museum: Closed December 24-25, 31 and January 1. Open regular hours December 26-30.
Penn Transit Services: Closed December 24 at 7 a.m. Regular hours resume on Tuesday, January 2 at 3 a.m. Limited transportation service is available December 25-January 1 from 6 p.m.-7 a.m., excluding December 31. Call (215) 898-RIDE (7433). Visit www.upenn.edu/penntransit for more information.
Purchasing and Travel Services: Closed December 25 and January 1. Service is available on December 26-December 29, 9:30 a.m.-1:30 p.m. The office reopens on January 2.
Student Financial Services: Closed December 26-January 2. Check www.sfs.upenn.edu and www.upenn.edu/registrar for potential updates to this schedule.
Student Health Services: Open December 20, 8 a.m.-4:30 p.m., December 21, 10:30 a.m.-4:30 p.m., December 22, 9 a.m.-12:30 p.m., December 23, 9-11:30 a.m., December 26-30, 9-11:30 a.m. Closed December 25 & January 1. Open January 2-3, 9 a.m.-4:30 p.m.; January 4, 10:30 a.m.-4:30 p.m.; January 5, 9 a.m.-4:30 p.m.; January 6, 9-11:30 a.m.; January 8-9, 9 a.m.-4:30 p.m. Regular hours resume January 10 at 8 a.m.
Sheraton Philadelphia University City Hotel: Open and operating on a regular schedule.

World Travel: Agents are available 24 hours per day, every day. Book travel online through Concur or call World Travel directly at (888) 641-9112.
Premier Travel: Closed December 26 and January 2. Early closing on December 23 and December 30 at 2 p.m. Otherwise the office will be open from 9 a.m.-5:30 p.m. on weekdays.
University Club: Closed December 22-January 7. Reopens January 8.
Van Pelt-Dietrich Library: Closed December 24, 25 and 31 and January 1. Open December 23 and January 6-7, 10 a.m.-6 p.m. Open December 22 and December 26-30, 8:30 a.m.-5 p.m. Open January 2-5 and 8-9, 8:30 a.m.-6 p.m.

Photo by Larry Pollis



At the Annenberg Center, The Canadian Brass will perform a mix of classical brass standards and jovial holiday favorites. For decades, the group has entertained with their signature blend of outstanding music, insightful asides and lighthearted humor.

Holiday Giving With Penn VIPS—Gift/Toy Drive December 1-December 16

Please join us in the Annual Penn Volunteers In Public Service Holiday Drive. As you buy toys and presents for the holiday season, please consider spreading some cheer to deserving members of our community. All toys and gifts donated will support the efforts of organizations including the Annual Holiday Party sponsored by Councilwoman Jannie Blackwell, People's Emergency Shelter, local schools, Potter's Mission, Bridges to the Community, Intercultural Family Services and many more.

All items for the holiday drive must be new, not used and unwrapped. Below are convenient locations for you to drop off your donations:

President's Office	100 College Hall	Brenda Gonzalez	898-0447
Provost Office	353B 3401 Walnut	Susan Curran	898-6841
Museum Reception Desk	Near Kress Gallery	Bonnie Crosfield	898-4001
Human Resources	538A 3401 Walnut Street	Syreeta Gary	898-6018
Van Pelt Library	Cataloging & Metadata Dept.	Rachelle Nelson	898-9048
Netter Center	111 S. 38th St. - 2nd Floor	Isabel Mapp	898-2020
ISC	265C 3401 Walnut St	Maureen Goldsmith	573-8771
Wharton	1000 SH-DH	Jennifer O'Keefe	898-1092
ISC	203A Sansom West	Kathie Ritchie	573-3561
LIFE	4508 Chestnut Street	Cherry Sturdivant	573-7202
Research Services	P-221 Franklin Bldg.	Lauren Oshana	573-6710
Student Health	3535 Market/Suite 100	Jay Efrece	746-1010
Comptroller's Office	312 Franklin Building	Celestine Silverman	898-7593
FRES	3101 Walnut	Carole Mercado	573-8795
AFCRI	421 Curie Boulevard	Joanne Gorman	746-5550
Physics & Astronomy	DRL 2E5	Michelle Last	898-5954
Nursing	3rd & 4th Flr. Mailroom Fagin Hall	Pat Adams	573-1630
AARC	3643 Locust Walk	Colleen Winn	898-0104
DAR	2929 Walnut-Suite 146	Gretchen E. Ekeland	898-3633



Penn Volunteers in Public Service “Adopt a Family for the Holidays” Program

Several departments have adopted a deserving family for the holidays and will be providing the family with toys and gifts so that they too can have a joyous holiday. Families are currently available and assignments are made during and prior to mid December. During December, departments from across the University “adopt” a deserving family. The adoption is usually done in lieu of departmental gift exchanges. The assigned family is treated to presents and sometimes holiday dinner. Families participate in the program on a one-time basis. Families are assigned to departments based on request. Departments choose the size of the family they would like to adopt. Departments can also request the ages of the children they are interested in adopting.

Departments may request a “wish list” from the family or they may choose their own gifts for the family members. Departments choose the number and types of gifts they will provide. Departments are provided with size of the family, names, ages and sizes of each family member. Departments are encouraged to deliver gifts to the families, but they may also request to have gifts delivered. Families are selected from the Baring House Family Service Agency and local shelters. A small number of referrals are also accepted. Contact Isabel Mapp at (215) 898-2020 or send an e-mail: sammapp@pobox.upenn.edu for additional information and/or to volunteer for this program.

Coat Drive: December 1-December 16

Does your gently used winter coat still have some serviceable miles on it or do you have a new coat to donate? Warm coats new or in good condition, for both children and adults, are needed by a number of charitable organizations in the Philadelphia area. Penn VIPS in the Netter Center for Community Partnerships (NCCP) office is organizing a Winter Coat Drive. If you have a coat (or coats) to contribute to the drive, you are welcome to donate them at NCCP 111 South 38th /2nd Floor. They do not have the facilities or funds to clean donated items. Freshly laundered (or recently cleaned) items are especially appreciated. Bring in your gently used coats to be donated to area shelters. Contact Isabel Mapp at (215) 898-2020 or send an e-mail: sammapp@pobox.upenn.edu for additional information and/or to make a donation.

