

September

AT PENN

Wherever this symbol appears, more images are available on our website, www.upenn.edu/almanac/at-penn-calendar

ACADEMIC CALENDAR

- 2** Labor Day (no classes).
10 Course Selection Period ends.

CHILDREN'S ACTIVITIES

7 *Thomas the Tank Engine & Friends at the Garden Railway*; train characters take over the railway for the weekend; Morris Arboretum. *Through September 8.*

Lightbox Film Center at IHP

Info: <https://lightboxfilmcenter.org/series/family-matinee4>

14 *Who Framed Roger Rabbit*; 2 p.m.; free.

CONFERENCES

13 *Designing a Green New Deal*; economists, historians and designers in conversation with journalists, organizers, elected officials and other parties engaged in organizing for climate action; 9:30 a.m.-7:30 p.m.; Irvine Auditorium; register: <https://tinyurl.com/y59pzm9d> (The Ian McHarg Center).

14 *Bound to Conserve: The Art of Angling and the Future of Rivers*; 1-7 p.m.; Kislak Center, Van Pelt Library; register: <https://tinyurl.com/yxpdd2gk> (Libraries). See Exhibits.

19 *Geosocial Encounters*; film screenings and symposium; 4 p.m.; location and info: www.ppehlab.org/events/geosocial-encounters-ecologies-documentary-research-and-practice (SAS).

Manifest(o): Paper Revolutions; explores paper's endurance as a material, subject and object in contemporary art; noon-8 p.m.; location and other info: <https://friendsofdardhunter.org/conference> (Libraries; Friends of Dard Hunter). *Through September 21.*

24 *How Emerging Technologies are Rewiring the Global Order*; fall 2019 colloquium; 9 a.m.-7 p.m.; Perry World House; RSVP: <https://tinyurl.com/yjepps35> (PWH).

EXHIBITS

Admission Donations and Hours

Annenberg School for Communication: free; hours, info: www.asc.upenn.edu

Arthur Ross Gallery (ARG): Fisher Fine Arts Library; free; hours: www.arthurrossgallery.org

Brodsky Gallery, Kelly Writers House: free; hours, info: <http://writing.upenn.edu/wh/involved/series/brodsky-gallery/>

Burrison Gallery, Inn at Penn: free; Mon.-Fri., 7:30 a.m.-5 p.m.; info: <http://tinyurl.com/kaevlec>

Esther Klein Gallery: free; Mon.-Sat., 9 a.m.-5 p.m.; info: <https://science-center.org/discover/ekg>

ICA: free; hours: <https://icaphila.org>

International House Philadelphia: free; hours: <http://ihousephilly.org>

Kroiz Gallery, Fisher Fine Arts Library: free; Mon.-Fri., 10 a.m.-4 p.m.; info: <http://tinyurl.com/hvrlct4>

Meyerson Hall, Weitzman School of Design: free; info: www.design.upenn.edu/graduate-admissions/post/meyerson-halls-lower-gallery

Morris Arboretum: hours, prices: morrisarboretum.org

Penn Museum: hours, prices: www.penn.museum

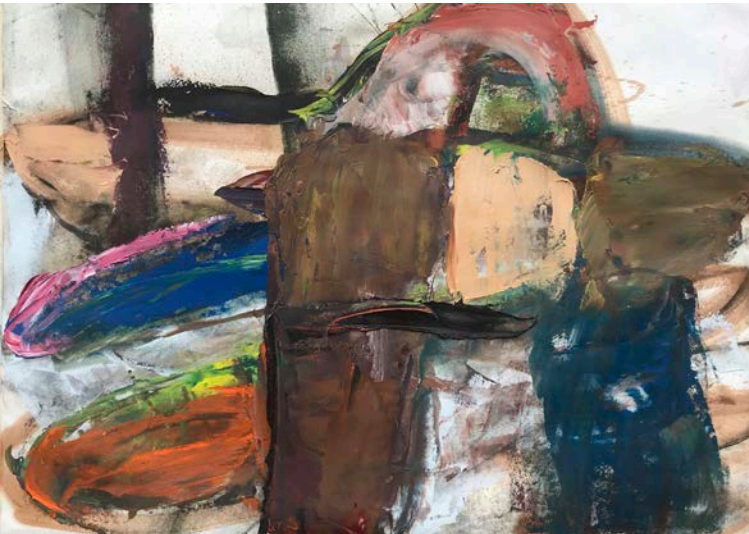
Van Pelt Library: free; hours, info: <http://www.library.upenn.edu/vanpelt>

Wistar: Mon.-Fri., 9 a.m.-5 p.m.; info: <https://wistar.org>

Upcoming

9 *Manuscriptistan*; photographs by Anthony M. Cerulli; Kamin Gallery, Van Pelt Library. *Through December 13.*

10 *The Word Made Manifest*; artists working with handmade paper as an explicit art; opening reception: 5-7 p.m.; Brodsky Gallery, Kelly Writers House. *Through October 27.*



New Work: Oil Paintings on Paper, an exhibit by artist Kathleen Shaver, is on display at Burrison Gallery. See Exhibits.

13 *Alchemical Infrastructures: Making Blockchain in Iceland*; examines the relationship between energy, environment, value and information with a 360-degree immersive film; opening reception: 5 p.m.; Annenberg School Forum. *Through May 2020.*

arms ache avid aeon; Nancy Brooks Brody / Joy Episalla / Zoe Leonard / Carrie Yamaoka; fierce pussy amplified; draws upon the collective power and diversity of individual art practices by the original core members of the queer art collective, fierce pussy; ICA; opening celebration: 6:30-9 p.m. *Through December 22.*

Colored People Time: Banal Presents; final chapter of the three-part installation; ICA; opening celebration: 6:30-9 p.m. *Through December 22.*

Michelle Lopez: *Ballast & Barricades*; employs a fragmented architectural language to critique systems of power and consumption; ICA; opening celebration: 6:30-9 p.m. *Through May 10, 2020.*



Nikolay Ushin, book cover design for Emil Zola's *Germinal* (Russia, 1926).

23 *Red Etchings: Soviet Book Illustrations from the Collection of Monroe Price*; Kislak Center, Van Pelt Library. *Through November 22.*

25 *Hostile Terrain 94*; pop-up exhibit depicting the thousands of migrants who have died as a result of US immigration policy; 10 a.m.-5 p.m.; Penn Museum. *Through September 27.* See Films and Talks.

28 Jaume Plensa: *Talking Continents*; 19 sculptures that are at once separate and interrelated; Arthur Ross Gallery. *Through December 8.*

Now

Design With Nature Now; a global survey of ecological design in the 21st century; Lower Gallery, Meyerson Hall. *Through September 15.*

Ian McHarg: *The House We Live In*; life and work of the Scotsman who revolutionized landscape architecture and planning; Kroiz Gallery. *Through September 15.*

Laurel McSherry: *A Book of Days*; conceived to inspire visitors to think about their everyday landscapes in new ways; Arthur Ross Gallery. *Through September 15.*

Swarm; an installation that calls attention to one of the most important, if overlooked, species on the planet—bees; Meyerson Hall façade. *Through September 15.*

New Work: Oil Paintings on Paper; Kathleen Shaver uses her paintings to capture the mysterious, inexpressible aspects of human existence; Burrison Gallery; reception: September 6, 4:30-7 p.m. *Through September 26.*

Oculus; Deirdre Murphy's paintings explore the interconnected qualities between art and science; Esther Klein Gallery; closing reception: September 26, 5-7 p.m. *Through September 28.*

Bearing Witness: Four Days in West Kingston; Penn Museum. *Through December 2.*

Moundbuilders: Ancient Artifacts of North America; Penn Museum. *Through December 2.*

The Bibliophile as Bookbinder; the angling binding of S. A. Neff, Jr.; Kislak Center, Van Pelt Library. *Through December 20.* See Conferences.

Musical Fund Society at 200; Eugene Ormandy Gallery, Van Pelt Library. *Through June 25, 2021.*

Ongoing

Ancient Egypt: From Discovery to Display; Penn Museum.

Audubon's Birds of America; 1st Floor, Van Pelt Library.

Imagery, Narrative, Propaganda: Artists in the German Democratic Republic; rm. 500, Annenberg School.

Marian Anderson on the World Stage; Marian Anderson Gallery, Van Pelt Library.

Loop de Loop: Patrick Dougherty Installation; stickwork sculpture; Morris Arboretum.

Out on a Limb; tree adventure exhibit celebrating its 10th year; Morris Arboretum.

Samuel Yellin, Metalworker: Drawings from the Architectural Archives; Kroiz Gallery.

We Are Not Alone; exhibit large-scale illustrations by Dwayne Booth; Forum, Annenberg School.

Penn Museum Tours

Gallery Tours; Saturdays and Sundays, 1:30 p.m.; Pepper Hall; free with admission; info: www.penn.museum/visit/tours

Global Guides public tours; Saturdays-Sundays, 2:30 p.m.; free with admission.

Highlights Tour: Mandarin Language; Fridays; 2:30 p.m.

FILMS

9 *2019 Story Slam Film Screening*; a viewing for those who missed the in-person event; 2 p.m.; Claire Fagin Hall (Nursing).

14 *In the Name of Peace*; screening and discussion with director Maurice Fitzpatrick and a panel of experts; 5 p.m.; rm. 401, Fisher-Bennett Hall (Cinema Studies).

Lightbox Film Center at IHP
Tickets: \$10, \$8 students/seniors; members free.
Info: www.lightboxfilmcenter.org

Screenings at 7 p.m. unless otherwise noted.

6 *Deep Dive: Kiarostami and Iranian Cinema*; 6 p.m.; free.

7 *Double Feature: The Experience & Suit for a Wedding*; 5 p.m.

12 *Life and Nothing More...*

13 *Through the Olive Trees*

14 *Taste of Cherry*

19 *Shirin*

20 *24 Frames*

25 *Border South*; film screening after the "Work is Work" forum. See Exhibits and Talks.

27 *Sun Ra: A Joyful Noise*; free outdoor screening.

28 *Olivia*

MEETINGS

9 PPSA Board Meeting; 1 p.m.; rm. 1413, BRB; RSVP: ppsa@lists.upenn.edu

11 University Council Meeting; 4-6 p.m.; Bodek Lounge, Houston Hall.

18 WXPEN Policy Board Meeting; noon; 3025 Walnut St; open to the public; more info: (215) 898-0628.

MUSIC

27 *Night Music Chamber Ensemble*; 7 p.m.; Kislak Center, Van Pelt Library; register: <https://annenbergcenter.org/event/night-music-chamber-ensemble>

Annenberg Center

Tickets: www.annenbergcenter.org

19 *47SOUL*; traditional Arabic street music; 7 p.m.

21 *Sweet Honey in the Rock*; renowned a cappella ensemble; 8 p.m.

26 *Les Ballets Jazz de Montréal*; music of Leonard Cohen; 7:30 p.m. *Also September 27*, 8 p.m. and *September 28*, 2 and 8 p.m.

World Cafe Live

Performances daily. Complete listing and tickets: philly.worldcafelive.com

ON STAGE

Annenberg Center

Tickets: www.annenbergcenter.org

13 *Tina Satter/Half Straddle*; a true story political thriller; 7:30 p.m. *Also September 14*, 2 and 8 p.m., and *September 15*, 7 p.m.

16 *Shtisel: Behind the Scenes*; behind the Scenes of the Unorthodox Orthodox Drama; 7 p.m.

28 *SUGAR SKULL!*; a Día de los Muertos musical adventure; 1 p.m.

READINGS & SIGNINGS

Kelly Writers House

All events in the Arts Café.

Info: <https://writing.upenn.edu/wh>
RSVP: wh@writing.upenn.edu

5 *Other Women Don't Tell You: The Poetics of Motherhood*; 6 p.m.

11 *The Method to the Madness*; noon.



Korean Culture Day celebration will occur at Morris Arboretum on September 28. See Special Events.

Speakeasy Open Mic Night; 7:30 p.m.

12 *A Conversation with John Carreyrou*; 5 p.m.

17 *Time Sensitive: Marjorie Welish*; 6:30 p.m.

18 *A Poetry Reading by Kate Colby*; 6 p.m.

23 *LIVE at the Writers House*; WXPEN radio; 7 p.m.

24 *A Poetry Reading by Laura Mullen and Aireal D. Matthews*; 6 p.m.

25 *Mess + Process: María Fernanda Snellings and Kameelah Janan Rasheed*; 6 p.m.

26 *A Conversation with Danny Strong*; 6 p.m.; RSVP required.

Penn Book Center

Info: www.pennbookcenter.com

5 Sharon Marcus' *"The Drama of Celebrity"*; in conversation w/ André Dombrowski; 6 p.m.

7 *Tender Buttons Press 30th Birthday Poetry Extravaganza!*; 2:30 p.m.

10 *Poetry Reading w/ Carlos Andrés Gómez, Warren Longmire, & the Excelano Project*; 6 p.m.

11 Nell Zink's *"Doxology"*; in conversation w/ Jaime Fountaine; 6:30 p.m.

12 *Poetry Reading w/ CACONRAD & Raquel Salas Rivera*; 6 p.m.

14 *Hopscotch Translation Series: Etel Adnan's "Time" w/ Sarah Riggs & Maya Pindyck*; 2:30 p.m.

19 Sarah Perry's *"After the Eclipse"*; in conversation w/ Emma Eisenberg; 6 p.m.

20 *Surreal Serenade & Dark Web Disruption w/ Anne Walsh, Pamela M. Lee, & Monica Amor*; 6:30 p.m.

23 *Hopscotch Translation Series: Maxim Osipov's "Rock, Paper, Scissors"*; 7 p.m.

26 Ahmad Almallah's *"Bitter English"*; 6 p.m.

Penn Bookstore

Info: <https://tinyurl.com/pennbookstore>

3 *How to be an Antiracist*; Ibram X. Kendi; 6 p.m.

12 *The Hollywood Jim Crow: The Racial Politics of the Movie Industry*; Maryann Erigha, alumna; 5:30 p.m.

13 *From News to Talk*; Kimberly Meltzer, alumna; 5 p.m.

16 *Healing the Thyroid with Ayurveda*; Marianne Teitelbaum; 6:30 p.m.

19 *White House Warriors: How the National Security Council Transformed the American Way of War*; John Gans; 6:30 p.m.

24 *The Lands in Between: Russia vs. the West and the New Politics of Russia's Hybrid War*; Mitchell Orenstein; 6 p.m.

25 *It Never Goes Away: Gender Transition at a Mature Age*; Anne Koch; 6 p.m.

27 *Mixed Feelings: Poems and Stories*; Avan Jogia; 6 p.m.

SPECIAL EVENTS

4 GSWS@Penn Open House; 4 p.m.; Ste. 345, Fisher-Bennett Hall; Register: www.sas.upenn.edu/gsws/events/2019/09/04/gsws-penn-open-house (Gender, Sexuality and Women's Studies).

5 *Almuerzo de Bienvenida/Welcome Lunch*; noon; rm. 473, McNeil Bldg. (LALS).

12 *Baltimore Avenue Dollar Stroll*; \$1 bargains from neighborhood favorites; 5:30-8:30 p.m.; Baltimore Ave. between 43rd and 52nd Sts. (UCD).

17 *National Constitution Day*; follow @PennVoters on Twitter and Instagram for more information and event details (Government and Community Affairs).

Navigating Commercialization @ Penn: Open House; 2:30 p.m.; Penn Center for Innovation; register: <https://tinyurl.com/yxwqpdxp> (Office of the Vice Provost for Research).

18 *Eastern Medieval Architecture: The Building Traditions of Byzantium and Neighboring Lands*; book publication reception to honor Robert Ousterhout, professor emeritus of history of art; 5:30-8 p.m.; Kislak Center, Van Pelt Library (History of Art).

20 *La Casa Latina 20th Anniversary Celebration!*; 5:30 p.m.; 3601 Locust Walk (LALS).

AARC's 30th Anniversary; 6 p.m.; Sheraton Hotel; info: (215) 898-0104; ticketed, RSVP required: uofpmlk@gmail.com (AARC).

24 *National Voter Registration Day*; register to vote before the October 7 Pennsylvania deadline; follow @PennVoters on Twitter and Instagram for more information and event details (Government and Community Affairs).

26 *Cores Day 2019*; get to know all of the Research Core Facilities representing CHOP, Penn and Wistar; 10 a.m.-2 p.m.; Lobby, ARC; Lobby, BRB; Outdoor Tent (Wistar).

27 *Punk Zine Festival with #Blkgirls-world*; 6-8 p.m.; ICA. *Also September 28*, 1-8 p.m. (The Sachs Program for Arts Innovation).

28 *Korean Culture Day*; celebration of traditional and modern Korean culture; 11 a.m.-3 p.m.; Morris Arboretum; info: www.morrisarboretum.org (Morris Arboretum).

Penn Global Week
Info: <https://global.upenn.edu/globalweek>

10 *The World Today*; a discussion about global healthcare and bioethics; 3 p.m.; Perry World House.

11 *Penn Abroad Fair*; 11 a.m.-2 p.m.; Perry World House.

12 *World Story Slam*; 6-8 p.m.; location TBD.

13 *Global Quakers Night*; 5:30-7:30 p.m.; Perry World House.

Penn Museum

Info: www.penn.museum

4 *A New Spin on Summer Nights*; happy hour featuring music, cocktails and strolls through the Penn Museum; 5-7:30 p.m.; free with PennCard; info: www.penn.museum/summernights

6 *Clio Interest Picnic*; learn about the Clio Society; a Penn undergraduate group; noon-2 p.m.

19 *Sniff: Perfumed Oils of the Ancient World*; 6-8 p.m.; Kress entrance; free to Penn students; register: students@pennmuseum.org

21 *Free Admission Day*; admission for two as part of the Smithsonian Magazine's annual Museum Day celebration; tickets: www.smithsonianmag.com/museumday/venues/museum/penn-museum/

SPORTS

2 (W) Soccer vs. Towson; 3 p.m.

6 (W) Soccer vs. Fairfield; 7 p.m.

7 *Sprint Football Alumni Game*; noon.

8 (W) Soccer vs. Mount St. Mary's; 5 p.m.

9 (M) Soccer vs. Marist; 7 p.m.

13 *Sprint Football vs. Army*; 7 p.m.

(W) Volleyball vs. Duquesne; 7 p.m.

14 (W) Volleyball vs. Chicago State; 10 a.m.

(W) Volleyball vs. St. Francis Brooklyn; 5 p.m.

15 *Field Hockey vs. Villanova*; noon.

(W) Soccer vs. Loyola; 4 p.m.

17 (M) Soccer vs. Rutgers; 7 p.m.

20 (W) Tennis hosts Cissie Leary Invitational; all day.

(W) Soccer vs. Hofstra; 6 p.m.

21 (W) Tennis hosts Cissie Leary Invitational; all day.

(M) Soccer vs. Temple; 7 p.m.

22 (W) Tennis hosts Cissie Leary Invitational; all day.

(W) Soccer vs. Temple; 6 p.m.

24 (M) Soccer vs. Lehigh; 7 p.m.

28 *Field Hockey vs. Cornell*; noon.

Almanac

3910 Chestnut St., 2nd Floor
Philadelphia, PA 19104-3111
(215) 898-5274 or 5275 FAX (215) 898-9137
Email: almanac@upenn.edu
URL: www.upenn.edu/almanac

TALKS

3 *Why Do Consumers Care About Loyalty Points?*; Minshen Li, economics; 3:30 p.m.; rm. 100, PCPSE (Economics). *Knowledge Hierarchies*; Alex Frankel, The University of Chicago Booth School of Business; 4 p.m.; rm. 101, PCPSE (Economics).

4 *1.5 Minute Climate Lecture 1*; Paul Sniegowski, SAS; Michael Weisberg, philosophy; Daniel Aldana Cohen, sociology; Irina Marinov, earth and environmental science; Megan Ryerson, Weitzman School of Design; noon; Benjamin Franklin statue, College Hall; info: www.sas.upenn.edu (SAS).

12@12; Bill Whitaker, Architectural Archives; noon; Arthur Ross Gallery (ARG).

Embryogenesis: A Cascade of Dynamical Systems; Stanislav Y. Shvartsman, Princeton University; 3 p.m.; Wu and Chen Auditorium, Levine Hall (Engineering).

Condensed and Living Matter Seminar; Moumita Das, Rochester Institute of Technology; 4 p.m.; rm. A4, DRL (Physics and Astronomy).

Owning Up: Closely Held Firms and Wealth Inequality; Alessandra Peter, New York University; 4 p.m.; rm. 200, PCPSE (Economics).

Buildings and Almost Buildings; Mimi Hoang and Eric Bunge, architects; 6:30 p.m.; rm. B3, Meyerson Hall (Weitzman School of Design).

5 *The Making of the Modern Metropolis: Evidence from London*; Daniel Sturm, London School of Economics; 3:30 p.m.; rm. 100, PCPSE (Economics).

6 *Will Robots Take Care of Grandma?*; Jerry Jacobs, sociology; noon; rm. 367, McNeil Bldg. (Sociology).

Underground Cinema: Thinking Vertically Across the 'and' of Cinema and Media Studies; Karen Redrobe, history of art; 3:30 p.m.; rm. 113, Jaffe Bldg. (History of Art).

Public Policy in Practice; Valerie Jarrett, University of Chicago Law School; 5:30 p.m.; auditorium, PCPSE; to register for the waitlist: <https://tinyurl.com/valerie-jarrettpublicpolicy> (GSWS, Fels).

9 *Nonparametric Sample Splitting*; Yulong Wang, Syracuse University; 4:30 p.m.; rm. 200, PCPSE (Economics).

10 *Mechanisms of Immune Escape in Liver Cancer*; Tim Greden, National Cancer Institute; noon; Caplan Auditorium, Wistar (Wistar).

Costly Price Adjustment and Automated Pricing: The Case of Airbnb; Qi Pan, economics; 3:30 p.m.; rm. 100, PCPSE (Economics).

Micro Theory Seminar; Asher Wolinsky, Northwestern University; 4 p.m.; rm. 101, PCPSE (Economics).

11 *1.5 Minute Climate Lecture 2*; Mark Alan Hughes, Kleinman Center; Gary Bernstein, astronomy and astrophysics; Bethany Wiggan, Germanic languages and literatures; Howard Keukrug, The Water Center; Eric Orts, legal studies and business ethics; noon; Benjamin Franklin statue, College Hall; info: www.sas.upenn.edu (SAS).

Cinemateriality; Kartik Nair, Temple University; noon; rm. 330, Fisher-Bennett Hall (Cinema Studies).

Refuge Beyond Reach: How Rich Democracies Repel Asylum Seekers; David FitzGerald, UC San Diego; noon; rm. 150, McNeil Bldg. (Sociology).

Complexity in the Chemistry and Physics of Lipid Membranes as a Handle to Activate the Delivery of Cargo to Cells;

TALKS

Cecelia Leal, University of Illinois at Urbana-Champaign; 3 p.m.; Wu and Chen Auditorium, Levine Hall (Engineering).

Physics Colloquium; Eleni Katifori, physics and astronomy; 4 p.m.; rm. A8, DRL (Physics).

Prudential Monetary Policy; Ricardo Caballero, MIT; 4 p.m.; rm. 200, PCPSE (Economics).

Artist Talk; Laurel McSherry, *A Book of Days* author; 5:30 p.m.; Arthur Ross Gallery (ARG).

Medium Design; Keller Easterling, architect; 6:30 p.m.; rm. B1, Meyerson Hall (Weitzman School of Design).

12 *Media in Postapartheid South Africa: Postcolonial Politics in the Age of Globalization*; Sean Jacobs, The New School; noon; rm. 500, Annenberg School (ASC).

Empirical Micro Seminar; Weilong Zhang, University of Cambridge; 3:30 p.m.; rm. 100, PCPSE (Economics).

Energy Policy Then and Now: A Climate Action Conversation; Rafe Pomerance, Arctic 21; David Roberts, Kleinman Center; 4 p.m.; Energy Forum at the Kleinman Center; RSVP: <https://tinyurl.com/y4eq6jnt> (Kleinman).

Coevolution of Social Behavior and Social Networks; Erol Akcay, biology; 4 p.m.; Tedorì Family Auditorium, Levin Bldg. (Biology).

Climate Change at Home: Adaptation, Resilience and Social Equity; Jeanne Herb, Environmental Analyse & Communications Group; Tanya Seaman, City Planning; Charles Ellison, *ecoWURD.com*; Susan Phillips, WHY?; 6 p.m.; Energy Forum at the Kleinman Center; RSVP: <https://tinyurl.com/yxraytac> (Kleinman).

13 *MindCORE Seminar*; Tali Sharot, University College London; noon; rm. 111, Levin Bldg. (SAS).

Artist Reset; gallery intern and Penn senior Miranda Ribeiro-Vecino leads a discussion about Laurel McSherry's *A Book of Days*; 1 p.m.; Arthur Ross Gallery (ARG).

The Keys to Success...Are Somewhere at the Bottom of my Purse; Nancy Gray, Gordon Research Conferences; 2 p.m.; Carolyn Hoff Lynch Lecture Hall, Chemistry Bldg.; workshop and reception to follow, info and to RSVP: <https://tinyurl.com/nancygraygordon> (Chemistry).

Locating Calling Whales in the Arctic with Signal Times Amongst Black Holes in Two-Dimensional Models; John Spiesberger, SAS; 3 p.m.; rm. 358, Hayden Hall (Earth & Environmental Science).

Reading Together the Faces of the Famous: Early Celebrity Portraits; Michael Leja, history of art; 3:30 p.m.; rm. 113, Jaffe Bldg. (History of Art).

14 *From Discovery to Display and the Shape of Things to Come*; Jennifer Houser Wegner, associate curator, Egyptian section; lecture and exhibit tour; 3:30 p.m.; classroom 2, Penn Museum (Penn Museum).

16 *HSS Workshop*; Caitlin Rosenthal, history; 3:30 p.m.; rm. 337, Claudia Cohen Hall (HSS).

Predicting Returns with Text Data; Dacheng Xiu, The University of Chicago Booth School of Business; 4:30 p.m.; rm. 200, PCPSE (Economics).

17 *Will the Robots Take Care of Grandma?*; Jerry Jacobs, sociology; noon; Hourglass Room, University Club, Inn at Penn; RSVP: pasef@pobox.upenn.edu (PASEF).

TALKS

Industrial Organization Seminar: Job Market; Kian Samaee, economics; 3:30 p.m.; rm. 100, PCPSE (Economics).

The Dynamics of Networks and their Economic Consequences; Matt Jackson, Stanford University; 4 p.m.; rm. 250, PCPSE (Economics).

18 *1.5 Minute Climate Lecture 3*; Herman Beavers, English and Africana Studies; Nikhil Anand, anthropology; Paul Saint Amour, English; Brenda Casper, biology; Simon Richter, Germanic languages and literatures; noon; Benjamin Franklin statue, College Hall; info: www.sas.upenn.edu (SAS).

Innovation Colloquium: JPOD@Philadelphia; Olivia McPherson, JPOD@Philadelphia; noon; rm. 213, Fagin Hall (Nursing).

Evolution of the Conformational-free Energy Landscapes of Proteins; Diwakar Shukla, University of Illinois at Urbana-Champaign; 3 p.m.; Wu and Chen Auditorium, Levine Hall (Engineering).

Glimpses of Equivariant Algebraic Topology; Peter May, University of Chicago; 3:30 p.m.; rm. A6, DRL (Mathematics).

A Touch of Non-Linearity: Mesoscale Swimmers and Active Matter in Fluids; Daphne Klotza, University of North Carolina; 4 p.m.; rm. A4, DRL (Physics and Astronomy).

Global Banks and Systemic Debt Crises; Diego Perez, New York University; 4 p.m.; rm. 200, PCPSE (Economics).

Electric Mud; Hernan Diaz Alonso, SCI-Arc; 6:30 p.m.; rm. B3, Meyerson Hall (Weitzman School of Design).

19 *Vaccines & Immune Therapeutics: Welcome/Vaccine History*; David Weiner, Wistar; 3 p.m.; Wistar (Wistar).

The Genomic Basis of Environmental Adaptation in House Mice; Michael Nachman, UC Berkeley; 4 p.m.; Tedorì Family Auditorium, Levin Bldg. (Biology).

Geometry-Topology Seminar; Dan Lee, CUNY; 4:30 p.m.; rm. 4C8, DRL (Mathematics).

Math-Physics Joint Seminar; Yuki Matsubara, Kobe University; 4:30 p.m.; rm. 4C2, DRL (Mathematics).

Secrets Without Agents: From Big Brother to Big Data; Anik6 Imre, University of Southern California; 5:15 p.m.; rm. 109, Annenberg School (ASC).

20 *MindCORE Seminar*; John McCoy, marketing; noon; rm. 111, Levin Bldg. (SAS).

Food for Thought!; Eric Tang, The University of Texas at Austin; noon; Asian American Studies Program, 473 McNeil Bldg. (AASP).

Artist and Workers Engagé: Maximilien Luce, Anarcho-Syndicalism, and the Paris Building Trades; Lindsay Grant, PhD Candidate, history of art; 3:30 p.m.; rm. 113, Jaffe Bldg. (History of Art).

23 *Science, Freedom, and the Cold War: A Political History of Apolitical Science*; Audra Wolfe, history and sociology of science; 3:30 p.m.; rm. 337, Claudia Cohen Hall (HSS).

Inference for Low-Rank Models; Yuan Liao, Rutgers University; 4:30 p.m.; rm. 200, PCPSE (Economics).

24 *TBD*; Shiva Malek, Genentech, Inc.; noon; Caplan Auditorium, Wistar (Wistar).

Industrial Organization Seminar; John Lazarev, New York University; 3:30 p.m.; rm. 100, PCPSE (Economics).

Micro Theory Seminar; Ran Shorrer, Penn State University; 4 p.m.; rm. 101, PCPSE (Economics).



In the exhibition *Jaume Plensa: Talking Continents*, the internationally renowned Spanish sculptor's public art is driven by a desire to emphasize the possibilities of communication brought about through sculpture and place. Installed around the world, Plensa's art is one of inclusion—bringing people together—and of profound impact. *Talking Continents* is an installation of 19 sculptures that are at once separate and interrelated. Comprised of letters from various alphabets that don't come together as words, the works exist instead as abstract forms, as arbitrary signs and shapes. As such, each sculpture embodies a dissolution of meaning or breakdown in communication. At the same time, the letters comprising the works are also the components needed to reconstruct words and create meaning—the building blocks for cultural understanding. A firm believer that art has the capacity to transform our lives, Plensa has stated that *Talking Continents* represents the concept of globalism without judgement. This exhibition is on display at Arthur Ross Gallery. See *Exhibits*.

TALKS

25 *1.5 Minute Climate Lecture 4*; Karen Goldberg, energy research; Frederick Steiner, Weitzman School of Design; Joe Francisco, earth and environmental science; noon; Benjamin Franklin statue, College Hall; info: www.sas.upenn.edu (SAS).

Extinction and Post-Apocalypse; Claire Colebrook, Penn State University; noon; rm. 330, Fisher-Bennett Hall (Cinema Studies).

The Patchwork City: Class, Space and Politics in Metro Manila; Marco Garrido, sociology; noon; rm. 150, McNeil Bldg. (Sociology).

Protein-Integrated Electronics: From Molecules to Machines; Leila Deravi, Northeastern University; 3 p.m.; Wu and Chen Auditorium, Levine Hall (Engineering).

Vaccines & Immune Therapeutics: Cellular Immune Responses; Michael Betts, Perelman School of Medicine; 3 p.m.; Wistar (Wistar).

Asset Prices and Unemployment Fluctuations; Patrick Kehoe, Stanford University; 4 p.m.; rm. 200, PCPSE (Economics).

Condensed and Living Matter Seminar; Arvind Murugan, University of Chicago; 4 p.m.; rm. A4, DRL (Physics and Astronomy).

Energy Economics & Finance Seminar; Alejandro Molnar, Vanderbilt University; 4 p.m.; rm. 306, Fisher Fine Arts Bldg.; info: <https://tinyurl.com/y6oujfah> (Kleinman).

"Work is Work": Kinship, Race and Violence on the Human Smuggling Trail; Jason De León, University of California, Los Angeles; 5 p.m.; Lightbox Film Center (Wolf Humanities). See *Films and Exhibits*.

The KPF Lecture; Gregg Pasquarelli, SHoP; 6:30 p.m.; Lower Gallery,

TALKS

Meyerson Hall (Weitzman School of Design).

26 *Knowledge by the Slice*; Howard Neukrug, The Water Center; noon; Amado Recital Hall, Irvine Auditorium; info: www.sas.upenn.edu (SAS).

Vaccines & Immune Therapeutics: The Haemophilus Influenza Type B Vaccine: A Scientific Biography; William Egan, GSK Vaccines; 3 p.m.; Wistar (Wistar).

The Evolution of Seasonal Camouflage; Jeffrey Good, biology; 4 p.m.; Tedorì Family Auditorium, Levin Bldg. (Biology).

Artist Talk @ Venture Café; discussion about *Oculus*, an exhibition by Deirdre Murphy; 4:30 p.m.; Esther Klein Gallery (EKG).

27 *Fracking, Freedom, and Community in Appalachian Town*; Colin Jerolmack, New York University; noon; rm. 500, Annenberg School for Communication (ASC).

Geographical Bias in Standardized Testing: Is Cultural and Socioeconomic Bias a Problem of the Past or Are We Simply Not Looking in the Right Space?; Manuel González Canché, GSE; noon; rm. 367, McNeil Bldg. (Sociology).

MindCORE Seminar; Anna Schapiro, psychology; noon; rm. 111, Levin Bldg. (SAS).

30 *Inference After Maximizing the Euclidean Norm*; Adam McCloskely, University of Colorado Boulder; noon; rm. 101, PCPSE (Economics).

HSS Workshop; Finn Brunton, history and sociology of science; 3:30 p.m.; rm. 337, Claudia Cohen Hall (HSS).

Large Hybrid Time-Varying Parameter VARs; Joshua Chan, Purdue University; 4:30 p.m.; rm. 200, PCPSE (Economics).

FITNESS AND LEARNING

1 *Daily Dig*; every day in September when Penn Museum is open; 1 p.m.; free w/admission (Penn Museum). *Through September 30*.

3 *Intro to Letterpress Workshop*; learn the fundamentals of setting type and letterpress printing; 1:30-4:30 p.m.; Common Press, Fisher Fine Arts Library (Libraries). *Also September 12 and 26*.

6 *Common Press Open House & Letterpress Demonstration*; discover letterpress and printmaking resources, view the collection of type and pull your own print to takeaway; 1-3 p.m.; Common Press, Fisher Fine Arts Library; RSVP: <https://tinyurl.com/y4tmcekk> (Libraries). *Also September 11*; RSVP: <https://tinyurl.com/yxw82wfw>

Kelly Writers House Activities Fair; 1-4 p.m.; Class of 1942 Garden, Kelly Writers House.



Sweet Honey in the Rock, an internationally renowned a cappella ensemble, will perform at Annenberg Center on September 21. See *Music*.

Village, 3916 Locust Walk; register: <https://tinyurl.com/PCAservices> (Health Committee of the Schuylkill Deanery).

Career Services

Info: www.vpul.upenn.edu/careerservices

17 *Creating Effective Application Materials for Academic Jobs at Different Institutions*; focused on PhD students/postdocs in the humanities and social sciences; noon; rm. 97, McNeil Building; register: <https://tinyurl.com/y3xc76ch>

18 *Talking About Your Teaching in Application Materials*; open to PhD students/postdocs; 11:30 a.m.; Ben Franklin Room, Houston Hall; register: <https://tinyurl.com/y5vspzqk>

25 *Talking About Your Teaching in Interviews*; open to PhD students/postdocs; 11:30 a.m.; rm. 108, The ARCH; register: <https://tinyurl.com/yxlw4cwk>

HR: Healthy You Workshops

Open to faculty and staff; free. Register: www.hr.upenn.edu/registration

5 *Gentle Yoga*; 11 a.m. *Also September 26*.

11 *Spinning*; 11:30 a.m.

13 *Wellness Walk*; noon.

18 *Chair Yoga*; noon.

19 *Healthy Aging: Eating to Stay Young Workshop*; noon.

20 *Zumba*; noon.

HR: Professional and Personal Development Programs

Open to faculty and staff; free unless noted otherwise. Register: <http://knowledgeink.upenn.edu>

10 *Psychology of Job Performance*; 12:30 p.m.

12 *Art of Effective Communication*; 12:30 p.m.

Creative Problem Solving; 9 a.m.-noon; \$75.

18 *Assertiveness Skills*; 12:30 p.m.

30 *How to Nominate a Staff Member or Team for a Models of Excellence Award*; 3 p.m.

HR: Work-life Workshops

Open to faculty and staff; free. Register at www.hr.upenn.edu/registration

5 *Introduction to the Mindfulness in the Workplace Program*; noon. *Also September 11*.

10 *Mindfulness*; 12:30 p.m.

23 *Positive Momentum: 4-Week Mindfulness Course*; 12:30-1:45 p.m.

24 *Stress Management*; 12:30 p.m.

25 *Thinking About Retirement*; 9 a.m.-3:30 p.m.

27 *Guided Meditation*; noon.

30 *Investing 101 Workshop*; noon.

Liberal & Professional Studies

Register: www.upenn.edu/lps-events

3 *Master of Environmental Studies Virtual Café*; noon.

4 *Walk-in Enrollment Counseling*; 11 a.m.-1 p.m. and 4:30-6 p.m.

12 *Master of Liberal Arts Virtual Information Session*; noon.

16 *Fels Institute of Government On-Campus Information Session*; 6 p.m.; info: <https://www.fels.upenn.edu/events> *Also September 26*, 6 p.m.

Master of Public Administration On-Campus Information Session; 6 p.m. *Also September 26*.

17 *Pre-Health Post-Baccalaureate Programs Virtual Information Session*; 5 p.m.

18 *Organizational Dynamics Programs On-Campus Information Session*; 6 p.m.

24 *Bachelor of Applied Arts and Sciences Virtual Information Session*; 5:30 p.m.; info: <https://lpsonline.sas.upenn.edu/events>

Morris Arboretum

Info: morrisarboretum.org

1 *Early Bird Weekends*; 8 a.m. *Also September 7-8, 14-15, 21-22, 28-29*.

Guided Regularly Scheduled Matinee Tours; 11 a.m. *Also September 8, 15, 22, 29*.

7 *Saturday Morning Live Great Trees Tour*; 11 a.m.

14 *MORE Hidden Gems Tour*; 11 a.m. *Also September 28*.

15 *Springfield Mills Demonstration Day*; 1-4 p.m.; Bloomfield Farm. 📍

Penn Vet Working Dog Center

Info: <https://www.vet.upenn.edu/about/penn-vet-events-calendar>

10 *"Get Lost" Working Dog Center Tour*; 2 p.m.

26 *"Up & Over, Under & Through" Working Dog Center Tour*; 10 a.m.