

January

AT PENN



Wherever these symbols appear, more images or audio/video clips are available on our website, www.upenn.edu/almanac



ACADEMIC CALENDAR

13 *First Day of Classes (Monday Class Schedule on Wednesday).*

18 *Martin Luther King, Jr. Day Observed (no classes).*

CHILDREN'S ACTIVITIES

International House

\$5 (ages 2+), free/IHP members. Tickets: <http://ihousephilly.org>

9 *All Around This World: Lebanese Folk Dance*; global music and world cultures program; 1 p.m.

Family Matinee: Azur & Asmar; 2 p.m.

Peanut Butter and Jams

Tickets \$10: <http://worldcafealive.com>

Doors: 10:30 a.m. Shows: 11 a.m.

2 *Gustafer Yellowgold.*

9 *Rainbow Rock Band.*

Penn Museum

Info.: www.penn.museum

10 *Destination China: Special Squares*; design your own square through collage and go on a mini-tour of military history; 1-4 p.m.; free w/admission.

15 *40 Winks with the Sphinx*; ages 6-12; 5:30 p.m.; register: <http://tinyurl.com/jz67r6z> Through January 16, 9 a.m. Also January 29-30.

CONFERENCES

6 *2016 Winter Institute on Qualitative Research Methods: The Art of the Interview*; 9 a.m.-5 p.m.; Claire M. Fagin Hall & Van Pelt-Dietrich Library; \$225-850; register by January 4: <http://tinyurl.com/gmyah3w> Through January 9, 10 a.m.-5 p.m. (CPHI).

13 *Epigenetics of Cell Fate Symposium*; 9 a.m.-5 p.m.; Auditorium & Commons, Smilow Center; register by January 8: www.surveymonkey.com/r/CellFateRegister (Penn Epigenetics Program; Penn IRM).

28 *Symposium: Historic Preservation in Contemporary China*; 6 p.m.; Upper Gallery, Meyerson Hall; info.: www.design.upenn.edu Through January 29, 9 a.m.-5 p.m. (PennDesign).

EXHIBITS

Admission Donations and Hours

Arthur Ross Gallery: Fisher Fine Arts Library; free; Tues.-Fri., 10 a.m.-5 p.m.; Sat.-Sun., noon-5 p.m.; www.arthurrossgallery.org/

Burrison Gallery: University Club at Penn; closed until January 19; free; Mon.-Fri., 7:30 a.m.-5 p.m.; www.upenn.edu/universityclub/burrison.shtml

Charles Addams Fine Arts Gallery: free; Mon.-Fri., 9 a.m.-5 p.m.

Esther Klein Gallery: free; Mon.-Sat., 9 a.m.-5 p.m.;

<http://estherkleingallery.tumblr.com/>

Institute of Contemporary Art (ICA): free; closed January 2016 for installation; www.icaphila.org

International House: free; hours vary; info.: <http://ihousephilly.org/>

Kroiz Gallery: free; Mon.-Fri., 10 a.m.-5 p.m.; www.design.upenn.edu/architectural-archives/about

Morris Arboretum: Mon.-Sun., 10 a.m.-4 p.m.; for prices: www.morrisarboretum.org

Penn Museum: \$15/adults; \$13/seniors (65+); \$10/children (6-17); free/

members, PennCard holders and children under 5; Tues.-Sun, 10 a.m.-5 p.m.; first

Wed. each month, 10 a.m.-8 p.m.; www.penn.museum

Slought: free; Tues.-Fri., noon-5 p.m.; www.slought.org

Van Pelt-Dietrich Library: free/ID required; for hours, see <http://www.library.upenn.edu/hours/vp.html>

Wistar Institute: free; Mon.-Fri., 9 a.m.-5 p.m

Upcoming

19 *Seashells to City Gardens – Watercolors by Lauren Sweeney*; a lifetime of scientific observation underpins her interest in capturing the essence of her subjects, which range from still life to interior scenes, streetscapes and seascapes; Burrison Gallery; reception: January 22, 4-6 p.m. Through February 12.

Nikon Small World Exhibition; discover the beauty and complexity of life as seen through today's advanced microscopes. The exhibit of winning images from Nikon's Small World photography contest gives you a glimpse into a world that most have never seen – the intersection of art and science as viewed through the lens of a microscope.; reception and talk: January 15, 5:30 p.m. register: www.wistar.org/NSW2016 Through March 4.

Now

Holiday Garden Railway; decorated for the holidays with lights that twinkle along the tracks; Morris Arboretum. Through January 3.

Scintillare: La Mer – Wildlife Series & Diatoms to Blue Whales; works in clay by Marguerita Hagan; Esther Klein Gallery. Through January 22.

Barton Myers: Works of Architecture and Urbanism; the architectural legacy of Barton Myers (GAR '64); Kroiz Gallery. Through January 29.

Straying: Diary of a Cold Universe; an exhibition revisiting Walter Benjamin's *Moscow Diary* of December 1926; Slought. Through February 3.

To Whom It May Concern: Letterhead from the Penn Museum Archives; a nod to the diverse and oft-times ornate organizational letterheads of times gone by; Penn Museum. Through January.

Victorious Secret: Entertaining Notions of Elite Ideals for Women 300 AD; based on originals in Piazza Armerina, Sicily; Education Commons, Franklin Field. Through February 15.

Year of Health–Corn: From Ancient Crop to Soda Pop; corn as an important crop that has impacted human health; Penn Museum. Through March 13.

Children of Abraham by Abbas; traveling exhibition by Magnum Photos photographer Abbas; Arthur Ross Gallery. Through March 20.

The Civil War: An Ephemeral Lens Into the Life and Times; the Civil War on the home front and the front lines of the Union and Confederacy; Kamin Gallery, Van Pelt-Dietrich Library. Through March 21.

Sex: A History in 30 Objects; highlights the ways that societies across time have approached sexuality and identity; Penn Museum. Through July 31.

Let Every Heart Be Filled with Joy; history of the Savoy Company; Eugene Ormandy Gallery, Otto E. Albrecht Music Library, Van Pelt-Dietrich Library. Through late 2016.

A Waltz in the Woods; an original, site-specific stick sculpture, constructed by Patrick Dougherty; Morris Arboretum. Ongoing until deterioration.

Ongoing

Audubon's Birds of America; a new page every Wednesday; 1st fl., Van Pelt-Dietrich Library.

Human Evolution: The First 200 Million Years; Penn Museum.

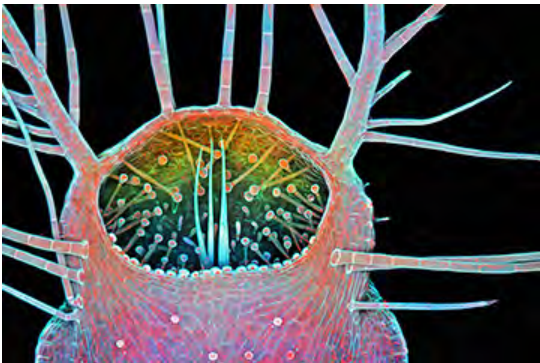
IHP: The First 100 Years; archival documents; International House.

John Cage: How to Get Started; interactive installation of a rarely heard performance; Slought.

Native American Voices: The People—Here and Now; Penn Museum.

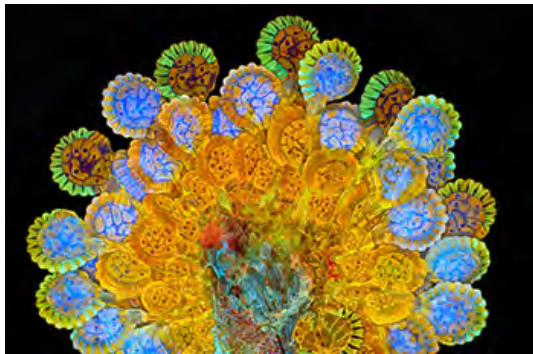
Sacred Spaces: The Photography of Ahmet Ertug; Penn Museum.

The History of Nursing as Seen Through the Lens of Art; Carol Ware Lobby, Claire Fagin Hall.

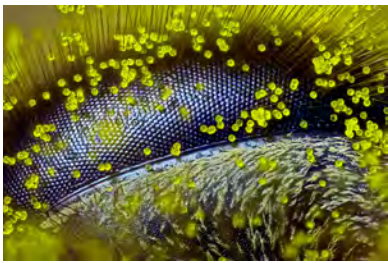


Nikon Small World Exhibition

The Wistar exhibit on display from January 19-March 4 with a reception and talk on January 15 gives a glimpse into a world that most have never seen. (counterclockwise from bottom right) *1st Place*: Ralph Claus Grimm: eye of a honey bee (*Apis mellifera*) covered in dandelion pollen (120x); Reflected Light; *11th Place*: Rogelio Moreno Gill: fern sorus at varying levels of maturity (20x); Fluorescence, Image Stacking; *3rd Place*: Igor Siwanowicz: intake of a humped bladderwort (*Utricularia gibba*), a freshwater carnivorous plant (100x); Confocal. See Exhibits.



Photos courtesy of the artists



Penn Museum Tours

Tours at 1:30 p.m. at the Warden Garden entrance. Free w/admission. For info. visit: www.penn.museum

2 *Highlights Tour: You Can Take It With You: Grave Goods and Beliefs About the Afterlife.*

8 *Unearthed in the Archives. Also January 15, 22 & 29.*

FILMS

20 *Cinema, Censorship and the Scandal of Sex: Screening of Syndromes and a Century*; 7 p.m.; International House; register: www.phf.upenn.edu/events/upcoming (Cinema Studies; PHF).

21 *Doctrine of Discovery*; unmasking the domination code; 6 p.m.; Penn Museum (Native American & Indigenous Studies).

International House (I-House)

\$9, \$7/students, seniors, free/members. Info.: <http://ihousephilly.org/>

9 *The Organizer*; Italian; 7 p.m.

15 *Horse Money*; Portuguese; 7 p.m.

23 *The Clowns*; Italian; 5 p.m.

Three Film Segments by Fellini; Italian; 8 p.m.

UCLA Festival of Preservation

International House; 7 p.m. unless noted. \$9, \$7/students, seniors, free/members.

16 *Her Sister's Secret/The First Legion.*

21 *Men in War.*

22 *White Zombie/The Crime of Doctor Crespi.*

28 *Spring Night, Summer Night.*

29 *My Best Girl (with Live Musical Score)*; live musical accompaniment by Don Kinnear.

30 *Bachelor's Affairs*; 2 p.m.

The Big Broadcast; 5 p.m.

The Long Voyage Home; 8 p.m.

FITNESS & LEARNING

5 *Aerobic Cardio Fitness Class*; 5:30-6:30 p.m.; *Tuesdays and Thursdays*; St. Agatha and St. James Church, Parish Hall (enter at back door); first class free, \$8, \$5/students; info.: Carolyn, (267) 251-3842.

7 *Penn Knitters*; all skill levels are welcome; noon; Penn Women's Center. *Thursdays through January 28.*

9 *Winter Wellness Walks*; led by an experienced Volunteer Guide, these brisk walks will stick to the paved paths and get your heart rate up; 10:30 a.m.; Morris Arboretum; free w/admission (Arboretum). *Saturdays through March.*

12 *Fels Institute of Government Virtual Information Session*; learn about Fels Master of Public Administration; 6 p.m.; register: www.fels.upenn.edu/events/2016-01 (Fels).

19 *Russian Tea*; 4:30 p.m.; Café Lounge, Williams Hall. Also January 26.

Academic Career Conference

For Penn doctoral students and postdocs; register: <http://tinyurl.com/k3gmk9u>

20 *Preparing for Campus Interviews for Academic Jobs—Humanities & Social Sciences*; 5 p.m.; Golkin Room, Houston Hall.

27 *Preparing for Campus Interviews for Academic Jobs—Science, Mathematics & Engineering*; 5 p.m.; Ben Franklin Room, Houston Hall.

Class of 1923 Arena

Prices: www.upenn.edu/icerink

Public Skating; Monday, Wednesday and Friday, noon-1:30 p.m.; Saturday 5-6 p.m.; Sunday 1-2 p.m.

16 *Annual Winter Fest*; skate into the new semester; 5 p.m.; \$5 admission includes skates.

HR: Healthy Living Workshops

Open to faculty and staff; free. Register: www.hr.upenn.edu/myhr/

12 *Guided Meditation—Take a Breath and Relax*; 12:30 p.m. Also January 22.

13 *Chair Yoga*; noon. Also January 27.

HR: Professional and Personal Development Programs

Free unless noted; open to faculty and staff. Register: <http://knowledgegelink.upenn.edu>

13 *Brown Bag Matinee—Accountability That Works*; 12:30 p.m.

20 *Project Management*; 9 a.m.; \$75.

HR: Quality of Worklife Workshops

Open to faculty and staff; free. Register: www.hr.upenn.edu/myhr/

20 *Setting Goals for the New Year*; noon.

Liberal & Professional Studies

Register: www.sas.upenn.edu/lps

20 *Organizational Dynamics On-Campus Information Session*; 5:30 p.m.

26 *Master of Chemical Sciences Virtual Information Session*; 5:30 p.m.

28 *Medical Physics Program Virtual Information Session*; 5:30 p.m.

Penn Libraries Workshops

In Van Pelt-Dietrich Library unless noted. Register: <http://tinyurl.com/objw8zp>

4 *Canvas Office Hours*; 2 p.m.; rm. 128, WIC. Also January 14 & 25. Also January 5 & 19, 1 p.m. Also January 6, 8, 11, 15, 21 & 27, 10 a.m. Also January 7 & 12, 11 a.m. Also January 13, noon.

5 *Canvas Basics*; 10 a.m.; Goldstein Electronic Classroom. Also January 7, 1 p.m. Also January 13, 2 p.m.

7 *Introduction to Programming: Using Scratch*; noon; WIC Seminar Rm. 124.

Makey Makey Exploration: Fun with Electronics; 3 p.m.; WIC Seminar Rm. 124.

25 *Exemplary Faculty Websites*; 9:30 a.m.; Goldstein Electronic Classroom.

MEETINGS

13 *WXPN Policy Board Meeting*; noon; 3025 Walnut St.; open to the public; info.: (215) 898-0628.

15 *PPSA Board Meeting*; 11 a.m.; Franklin Bldg.; RSVP: ppsa@exchange.upenn.edu

27 *University Council Meeting*; 4-6 p.m.; Bodek Lounge, Houston Hall; RSVP: ucouncil@pobox.upenn.edu

MUSIC

27 *eighty eight LATELY: concerts and talks around composing for the piano in the 21st century*; Marilyn Nonken, solo piano; works by Rakowski, Carrick, Kuehn, Murail and Dufourt ; 8 p.m.; Rose Recital Room, Fisher-Bennett Hall; free (Music).

31 *Mack Avenue SuperBand*; brings together an impressive ensemble of jazz guests for an unforgettable concert experience: Gary Burton, Tia Fuller, Sean Jones, Christian McBride, Christian Sands and Ulysses Owens, Jr.; 7 p.m.; Zellerbach Theatre, Annenberg Center; \$20-50; tickets: www.annenbergcenter.org/ (Annenberg).

World Cafe Live

Performances daily. For a complete listing, see: <http://philly.worldcafealive.com/>

ON STAGE

24 *Intercultural Journeys: The Artistry of Identity and Transformation: Kinan Azmeh and Kevork Mourad: Home Within*; audio-visual performance offering an impressionistic reflection on the Syrian revolution and its aftermath; 7 p.m.; International House; \$8-15; tickets: <http://ihousephilly.org/> (I-House).

30 *The Three Tenors (Who Can't Sing)*; Vic DiBitetto, the Godfather of Comedy; Richie Minervini & Fred Rubino, top headliners in *The Family*; 8-10 p.m.;

Irvine; \$35-55; tickets: www.thethreetenorswhocantsing.com/shows (Irvine).

READINGS AND SIGNINGS

Kelly Writer's House

All events located in the Arts Café. Info: www.writing.upenn.edu/wh

21 *Mind of Winter*; 5:30 p.m.; RSVP: (215) 746-POEM.

25 *Live at Kelly Writers House*; 7 p.m.

26 *Suppose an Eyes Poetry Reading*; 6 p.m.

27 *Women in Music Panel*; 6 p.m.

28 *Calling All Poets: Graduate Student Poetry Reading*; 6 p.m.

Penn Bookstore

Info.: www.upenn.edu/bookstore

26 *Heal: The Vital Role of Dogs in the Search for Cancer Cures*; Arlene Weintraub, author & Karin Sorenmo, Penn Vet; 6 p.m.

28 *Wired to Create*; Scott Barry Kaufman, Imagination Institute in the Positive Psychology Center; 6 p.m.

SPECIAL EVENTS

19 *Annenberg Seminar in History Honoring Recent Book Publications of Faculty*; honoring Mary Frances Berry – *We Are Who We Say We Are: A Black Family's Search for a Home in the Atlantic World*; honoring Vanessa Ogle – *The Global Transformation of Time, 1870-1950*; 4:30 p.m.; rm. 209, College Hall (History).

30 *Chinese New Year Celebration*; celebrate the Year of the Monkey and learn more about how the Lunar New Year is celebrated throughout Asia at this annual extravaganza; 11 a.m.-4 p.m.; Penn Museum; free w/admission (Museum).

SPORTS

Tickets & venues: www.pennathletics.com

2 (M) *Basketball vs. Binghamton*; 1 p.m.

9 (M&W) *Swimming vs. Yale*; 10 a.m. (M&W) *Swimming vs. Dartmouth*; 10 a.m.

(W) *Basketball vs. Princeton*; 1 p.m. (M) *Basketball vs. Princeton*; 4:30 p.m.

10 *Wrestling vs. Lehigh*; 1 p.m.

16 (W) *Squash vs. Stanford*; 1 p.m.

20 (M) *Basketball vs. Saint Joseph's*; 9:30 p.m.

23 (W) *Fencing*; Philadelphia Invitational; all day.

24 (M) *Fencing*; Philadelphia Invitational; all day.

Wrestling vs. Binghamton; 1 p.m.

29 (M&W) *Swimming vs. West Chester*; 5 p.m.

(W) *Basketball vs. Yale*; 7 p.m.

30 (W) *Tennis vs. Old Dominion*; TBA. (M&W) *Swimming vs. La Salle*; noon.

(M) *Squash vs. Princeton*; noon. (W) *Squash vs. Princeton*; 2:30 p.m. (W) *Basketball vs. Brown*; 7 p.m.

31 (W) *Tennis vs. Rutgers*; noon. *Wrestling vs. Rider*; noon.

(W) *Gymnastics vs. Centenary*; noon.



Photo courtesy of the artist

Scintillare: La Mer – Wildlife Series & Diatoms to Blue Whales, the exhibit of works in clay by Marguerita Hagan at Esther Klein Gallery is on display through January 22. See Exhibits.

Almanac

3910 Chestnut St., 2nd Floor
Philadelphia, PA 19104-3111
(215) 898-5274 or 5275 FAX (215) 898-9137
Email: almanac@upenn.edu
URL: www.upenn.edu/almanac

Unless otherwise noted, all events are open to the general public as well as to members of the University. For building locations, call (215) 898-5000, or see www.facilities.upenn.edu or the University's website, www.upenn.edu A phone number normally means tickets, reservations or registration required.

Almanac carries an Update with additions, changes & cancellations if received by Monday at noon for the following week's issue. University members may send notices for the Update or February AT PENN calendar.

Events on this calendar are subject to change. More information can be found on the sponsoring department's website. Sponsors are listed in parentheses.


Photo courtesy of the artist



Seashells to City Gardens – Watercolors by Lauren Sweeney</

TALKS

5 *Interventions Targeting Fundamental Aging Processes: The Path to Translation*; James Kirkland, Mayo Clinic; 2 p.m.; Rubenstein Auditorium, Smilow Center; register: www.med.upenn.edu/aging/events.html (Institute on Aging).

6 *The Piltdown Fossil Forgery and the Search for the “First Englishman”*; Janet Monge, physical anthropology; 6 p.m.; Penn Museum; \$5, \$2/members, \$10/door; tickets: www.penn.museum/ (Museum). 

7 *Special Biological Chemistry Seminar*; Gregory Alushin, NIH; 1 p.m.; Carolyn Hoff Lynch rm., Chemistry Bldg. (Chemistry).

11 *Special Biological Chemistry Seminar*; Vinayak Argarwal, UC San Diego; 1 p.m.; Carolyn Hoff Lynch rm., Chemistry Bldg. (Chemistry).

12 *Behavioral Economics: How People Process Information and Make Decisions*; Kevin Volpp, Center for Health Incentives and Behavioral Economics; noon; Auditorium 208, ARCH Bldg.; register: <http://ldi.upenn.edu/events> (Penn LDI).

Women and Health: Revisit, Review, Re-Envision; Afaf Meleis, Nursing; noon; webinar; register: <http://tinyurl.com/pcw-wcaa> (Penn Nursing).

WPPSA Speaker Series; Lou Caccamo, HR Benefits; 12:30 p.m.; ste 1-A South, HR Learning & Education (WPPSA).

Molecular Mechanisms for Initiating DNA Replication in Eukaryotes; Franziska Bleichert, Johns Hopkins University; 1 p.m.; Carolyn Hoff Lynch rm., Chemistry Bldg. (Chemistry).

13 *Social Norms and Identity Dependent Preferences*; Erin Krupka, University of Michigan; 5 p.m.; location TBA (PPE).

14 *Crowdsourcing Smartly: Is Democracy Prepared to Flip the Big Data Switch?*; Beth Noveck, NYU; 4:30 p.m.; Silverstein Forum, Stiteler Hall (Penn Program on Democracy, Citizenship and Constitutionalism).

15 *Family & Gender Workshop*; Pete Harvey, sociology; noon; rm. 169, McNeil Bldg. (Sociology).

LDI Research Seminar; Peter Margolis, Cincinnati Children’s Hospital Medical Center; noon; Auditorium, Colonial Penn Center; register: <http://ldi.upenn.edu/events> (Penn LDI).

TALKS

17 *Designing Sustainable Spaces – The Lukens Endowed Lecture*; Bryan Hanes, Studio Bryan Hanes; 2 p.m.; Morris Arboretum; free w/admission for non-members, free/members (Arboretum).

20 *The Belly Mommy and The Fetus Sitter: The Reproductive Marketplace and Unconventional Family Creation*; Joshua Gamson, University of San Francisco; noon; rm. 103, McNeil Bldg. (Sociology).

Religion, Art and the Brain; Andrew Newberg, Thomas Jefferson University and Hospital; 5:30 p.m.; Arthur Ross Gallery (ARG).

Keeping it Civil, Keeping it Real: A Conversation about Classroom Culture at Penn; open student conversation; 6 p.m.; ARCH Bldg. (Faculty Senate; Campaign for Community).

21 *Innovative Approaches to Research on Alzheimer’s Disease Prevention: Designing and Implementing Large-Scale Studies*; Fran Grodstein, Harvard; 3 p.m.; Rubenstein Auditorium, Smilow Center; register: www.med.upenn.edu/aging/events.html (Institute on Aging).

Costly Contests and the Will to Win; Einav Hart, PPE; 4:30 p.m.; rm. 337, Claudia Cohen Hall (PPE).

Reading the Bible: Jewish and Christian Interpretations of the First Verse of Genesis; David Ruderman, Jewish studies program; Peter Stallybrass, English; 5 p.m.; Class of 1978 Orrery Pavilion, Van Pelt-Dietrich Library; register: www.phf.upenn.edu/ (PHF).

Visiting Artist Lecture; Rashaad Newsome, artist; 6:30 p.m.; rm. B3, Meyerson Hall (PennDesign).

22 *Culture & Interaction Workshop*; Sarah Adeyinka & David Sorge, sociology; noon; rm. 169, McNeil Bldg. (Sociology).

LDI Research Seminar; John Spertus, Saint Luke’s Mid America Heart Institute; noon; Auditorium, Colonial Penn Center; register: <http://ldi.upenn.edu/events> (Penn LDI).

From Labor to Capital: The Forgotten History of the Tax Preference for “Earned” Income; Julia Ott, New School; 2 p.m.; rm. 209, College Hall (History).

25 *Cognitive Neuroscience and Finance*; Colin Camerer, California Institute of Technology; 3:30 p.m.; Silverstein Forum, Stiteler Hall (Center for Cognitive Neuroscience; Psychology).

TALKS

The Environmental Causes of the Tobacco Protest in Nineteenth-Century Iran; Ranin Kazemi, San Diego State University; 5:30 p.m.; location TBA (Middle East Center; History; NELC).

26 *Public Management in Practice: Fiscal Policy and City Economies*; Robert Inman, finance; noon; Fels Institute of Government; register: www.fels.upenn.edu/ (Fels).

Friendship and Your Brain; Michael Platt, neuroscience, psychology and marketing; 6 p.m.; World Cafe Live (Penn Science Café).

27 *Cinema Studies Colloquium*; Jeff Scheible, SUNY Purchase College; noon; rm. 330, Fisher-Bennett Hall (Cinema Studies).

Penn Tobacco Center on Regulatory Science Seminar: Adolescents and E-cigarettes: Digging Deeper; Matthew Farrelly, RTI Health Solutions; noon; rm. 500, Annenberg School (Annenberg School).

Sociology Colloquium; Deborah Davis, Yale University; noon; rm. 103, McNeil Bldg. (Sociology).

In Treatment: Psychiatry and the Archives of Modern Sexuality; Regina Kunzel, Princeton University; 5 p.m.; Rainey Auditorium, Penn Museum; register: www.phf.upenn.edu/ (PHF).

28 *BCIP Speaker Series*; Sheena Greitens, University of Missouri; noon; Forum, Stiteler Hall (Christopher H. Browne Center for International Politics).

The Elusive Quest for a Constitutional Right to Liberty; Michael Moore, University of Illinois; noon; Faculty Lounge, Law School (Penn Law).

Howard A. Silverstein and Patricia Bleznak Silverstein Photography Lecture; Richard Ibhgy & Marilou Lemmens, artists; 6:30 p.m.; Class of 1978 Orrery Pavilion, Kislak Center, Penn Libraries (PennDesign).

29 *LDI Research Seminar*; Jeffrey Macher, Georgetown University; noon; Auditorium, Colonial Penn Center; register: <http://ldi.upenn.edu/events> (Penn LDI).

Open the January 2016 AT PENN calendar by screening this QR code with your smartphone.



Penn Museum January Events



Photos courtesy of Penn Museum



(counterclockwise, from bottom right) Children aged 6-12 can enjoy *40 Winks with the Sphinx*, an overnight “expedition” of the Museum on January 15 & 29. See *Children’s Activities*. On January 30, celebrate the Year of the Monkey as part of the Museum’s annual Chinese New Year Celebration. See *Special Events*. On January 6, Janet Monge, keeper and curator-in-charge of the physical anthropology section, presents *The Piltdown Fossil Forgery and the Search for the “First Englishman”* as part of the Great Myths and Legends Lecture Series. See *Talks*.



2016 Dr. Martin Luther King, Jr. Commemorative Symposium on Social Change: Penn’s Commitment to the Legacy



Symposium Events Calendar

See www.upenn.edu/aarc/mlk/ for more information.

15 *God’s Great Expectations of Men of Color*; panel discussion on men of color’s shared understanding of God or a higher power’s relationship to them, and their mission in everyday work; 6-8 p.m.; Christian Association (African-American Resource Center, Christian Association).

18 *Day of Service Breakfast*; breakfast with performers and Jasmin Senior, Affinity Group President of NeXT Philadelphia; 8:30-9:30 a.m.; Hall of Flags, Houston Hall (BGAPSA; Dr. Martin Luther King, Jr. Symposium Committee).

Community Beautification Projects; volunteers will clean, paint and organize schools including Martha Washington Elementary, Comegys Elementary and Community Education Center in West Philadelphia; refreshments served; come dressed for painting; 10 a.m.-2 p.m.; meet at Houston Hall for transportation at 9:45 a.m. (Dr. Martin Luther King, Jr. Symposium Committee).

Children’s Banner Painting; paint commemorative posters and banners while listening to stories and songs about Dr. King’s life; adult supervision required; 9:30 a.m.-12:30 p.m.; Class of ’49 Auditorium, Houston Hall (Dr. Martin Luther King, Jr. Symposium Committee).

Helping Hands at Houston Hall; create personal gifts to be donated to West Philadelphia shelters, homes, hospitals and charities; 10 a.m.-12:30 p.m.; Reading Room, Houston Hall (Dr. Martin Luther King, Jr. Symposium Committee).

Philadelphia Reads Literacy Project; create books on tape to promote literacy for Philadelphia youth; participants are asked to donate a children’s book(s) that discusses multi-cultural issues relating to children; 10 a.m.-12:30 p.m.; Benjamin Franklin Room, Houston Hall (Dr. Martin Luther King, Jr. Symposium Committee).

Class of ’80/Sayre Mentoring Program; 10 a.m.-1 p.m.; Hall of Flags (2nd Floor Balcony), Houston Hall (Dr. Martin Luther King, Jr. Symposium Committee).

College Application and Preparation Community Workshop; 1-2:30 p.m.; Hall of Flags, Houston Hall (Dr. Martin Luther King, Jr. Symposium Committee).

MLK Day of Justice Series: Identity, Inter-sectionality, and You; kicking off a three-part series on social justice related topics; exploring inter-sectionality of identities in relationship to social justice; a brief overview of MLK’s view of justice, panel, open dialogue and interactive activities; it will provide a safe space for inter-generational community building; 2:30-7 p.m.; Multipurpose Room, W.E.B. Du Bois College House (LGBT Center; Civic House; W.E.B. Du Bois College House).

Dr. Martin Luther King, Jr. Day Candlelight Vigil; 7 p.m.; begins at Du Bois College House and ends at the College Green (Alpha Phi Alpha Fraternity, Inc., Mighty Psi Chapter; Alpha Kappa Alpha Sorority, Inc., Gamma Epsilon Philadelphia City Chapter).

19 *Money Management for Families*; this program is designed to strengthen family members’, especially young people’s, financial literacy capacity; the importance of and how to construct household budgets will be presented as well as essential “don’ts”; 6 p.m.; location TBA (Elements of Community).

20 *Dr. Martin Luther King, Jr. Interfaith Program and Awards Commemoration*; this annual event will feature guest speaker Shane Claiborne, author, peace-making activist and a founder of The Simple Way, as well as poetry, musical performances from the Penn community and the MLK community awards; reception to follow; 6 p.m.; Bodek Lounge, Houston Hall; (Dr. Martin Luther King, Jr. Symposium Committee; Office of the Chaplain; Office of the President).

21 *2016 Reverend Dr. Martin Luther King, Jr. Lecture in Social Justice*; featuring

Patrisse Cullors and Opal Tometi, (two of the three) founders of the Black Lives Matter movement, in conversation with Camille Z. Charles, sociology, Africana studies and education, director of the Center for Africana Studies; 5:30 p.m.; Zellerbach Theatre, Annenberg Center (Center for Africana Studies; Office of the President; Annenberg School).

22 *Read to Me at Lea!*; help build a Reading Center at the Lea School; the Penn community can purchase books via this Amazon book registry: <http://registry.thebump.com/linda-kim-ancil-george-december-2015-pa/8335826>; 9:30-11:30 a.m.; Henry C. Lea Elementary School (The Office of Affirmative Action and Equal Opportunity Programs, Penn Libraries; The Netter Center for Community Partnerships; The African American Resource Center).

How do I respond? A practical workshop for disrupting racialized situations in everyday life; workshop space on dealing with racialized scenarios in our everyday lives—and a brainstorming session on positive comebacks for those scenarios—through role playing. Followed by casual discussion time over dinner and drinks. 3-7 p.m.; location TBA (Students Confronting Racism and White Privilege).

Performance Art for Social Change featuring PLP TheUnity; PLP TheUnity (Peace, Love, Power. TheUnity) invites all to share in the spirit of Dr. Martin Luther King, Jr. for an evening of musical entertainment and insightful engagement; 7-9 p.m.; The Rotunda (African-American Resource Center).

25 *Incarceration of Immigrant Families*; discussion of incarceration of immigrant families at the Berks County Detention Center in Pennsylvania; 6-8 p.m.; location TBA; (LAGAPSA; La Casa Latina).

26 *50 Shades of Black*; a community-engaged, art-based platform for affirming beauty and critically examining the role of sexuality and skin tone in the formation of Black identity; info.: <http://beautifulineveryshade.com/discovery-workshops/>; 6 p.m.; location TBA; (Association of Black Social Workers; BGAPSA).

Refugee Kids film screening; Refugee Kids: One Small School Takes On the World is a short documentary that follows students at a New York City summer program for children seeking asylum from the world’s most volatile conflicts; *Refugee Kids* humanizes complex geopolitics and depicts the challenges and urgency of immigration to America in an increasingly dangerous – and interconnected – world; there will be a Q&A with the director following the screening; 6:30 p.m.; location TBA; (Students for International Social Work; Penn Law International Human Rights Advocates; Social Work Advocates for Immigrant Rights; HIAS PA).



PLP TheUnity (at left) are the featured act for the *Performance Art for Social Change on January 22* at the Rotunda. At far left is Dominic Cartwright; in the middle is Kitsi Watterson, a senior lecturer in the English department; and at far right is Brother Robb Carter, associate director of the African-American Resource Center.

Each year, during the month of January, the University of Pennsylvania and our surrounding communities come together to commemorate the life and legacy of Dr. Martin Luther King, Jr.

The annual commemoration reminds us of our interdependence and reaffirms our commitment to the betterment of our communities through civility and service.

Happy New Year!



Photos courtesy of AARC

