

# UNIVERSITY OF PENNSYLVANIA *Almanac*

Tuesday  
June 17, 2025  
Volume 71 Number 37  
[www.upenn.edu/almanac](http://www.upenn.edu/almanac)

## Penn Nursing 2025 Faculty Award Recipients

### Dean's Award for Exemplary Citizenship

This award is for sustained and significant lifetime contributions, mentorship, and service to the School of Nursing, the University, and the community.

Heath D. Schmidt is a professor of nursing and an associate professor of psychiatry in the Perelman School of Medicine. Dr. Schmidt, a distinguished neuropharmacologist and director of the Laboratory of Neuropsychopharmacology, is an exemplary teacher, researcher, and mentor whose work bridges scientific discovery and nursing practice. His research is deeply impactful, advancing understanding of addiction and the effects of diet on brain function, shaping care strategies for vulnerable populations. As chair of Penn Nursing's Faculty Senate in 2024-2025, Dr. Schmidt engaged Penn's faculty in meaningful dialogue and decision-making, strengthening



Heath D. Schmidt

shared governance. A steadfast advocate for faculty, staff, and students, he is a trusted and integral partner in advancing Penn Nursing's mission. His leadership in the Faculty Senate and service on the Living Our Values (LOV) task force were instrumental in guiding the school through a critical period of transition, enhancing its reach and impact as part of the LOV framework. Dr. Schmidt is also deeply committed to mentorship, supervising numerous research assistants and students while fostering a respectful and collaborative learning environment. Through his dedication to research, teaching, and institutional service, Dr. Schmidt has made a lasting impact on the School of Nursing and the broader academic community.

### Dean's Award for Strengthening Community

This award is for demonstrated excellence in creating, promoting, and maintaining Penn Nursing's values by cultivating an environment that recognizes, encourages, and effectively uses each individual's talents.

Casey Benchimol, a part-time lecturer, is a dedicated clinician, educator, and advocate whose work has significantly advanced community engagement and healthcare access for LG-BTQ+ individuals and other historically mar-

*(continued on page 4)*

## Penn Dental Medicine Class of 2025 Teaching and Service Awards

Penn Dental Medicine faculty and staff members have been honored for excellence in teaching and service by the Class of 2025. Each academic year, the graduating class recognizes members of the faculty and staff who have had a significant impact on their educational experience; this year's awards were presented as part of the senior farewell celebration, held on May 13. The awards and honorees included:

### Basic Science Award

Presented for excellence in teaching within the basic sciences, this year's recipient is Elliot Hersh, an emeritus professor in the department of oral & maxillofacial surgery/pharmacology. This marks a record 24 times that Dr. Hersh has received this award during his teaching career at Penn Dental Medicine. A highly respected researcher in non-addicting strategies to manage acute postoperative dental pain, Dr. Hersh joined the Penn Dental Medicine faculty in 1988. He has directed and lectured extensively in both the Introduction to Pharmacology and Neuropharmacology



Elliot Hersh

courses. Dr. Hersh is a past recipient of Penn's Lindback Award for Distinguished Teaching and the IADR Distinguished Scientist Award in Pharmacology, Therapeutics and Toxicology, and is a co-recipient of Penn's One Health Award (with John Farrar and Rosemary Polomano) and an invited speaker at NASEM.

### Robert E. DeRevere Award

Presented for excellence in preclinical teaching by a part-time faculty member, the award is named in honor of Dr. DeRevere, a member of the Penn Dental Medicine Class of 1945, who served on the school's faculty. This year's recipient is Frank Smithgall, C'79, D'83, a clinical associate professor of restorative dentistry, who has been a member of the school's part-time faculty since 1984. Dr. Smithgall lectures in preclinical courses, and for the past nine years, he has been course director of Partial Removable Dental Prosthesis. This is the eleventh time Dr. Smithgall has been honored with this award, having also received it in 1990, 2010, 2011, 2016, 2018, 2020, 2021, 2022, 2023, and 2024.



Frank Smithgall

*(continued on page 6)*

## \$50 Million Gift to Establish the Lurie Autism Institute at Children's Hospital of Philadelphia and Penn Medicine

A \$50 million gift to Children's Hospital of Philadelphia (CHOP) and Penn Medicine will create an ambitious joint initiative called the Lurie Autism Institute, which will drive discoveries with transformative impact for those living with autism spectrum disorder (ASD). The gift, from the Lurie family, is the largest-ever single donation to U.S. academic medical centers focused on autism research across the lifespan.

Over 75 million people worldwide are living with ASD, including one in 31 children and one in 45 adults in the U.S. The Lurie family's investment will strategically use CHOP and Penn Medicine's strengths in autism research and translation to seek answers to the most challenging and important questions around ASD. Rooted in a collaboration between world-renowned centers in pediatric research and academic medicine, the institute has a shared commitment to innovation to turn bold ideas into tangible change. This first-of-its kind institute aims to be a global hub for autism research that connects scientists, clinicians, families, students, and donors.

"We established the Lurie Autism Institute to spark a new era of scientific discovery in autism. CHOP and Penn Medicine bring unmatched expertise and a proven record of innovation, and together, they have the tools to unlock answers that have eluded the field for far too long," said Jeffrey Lurie, chairman and CEO of the Philadelphia Eagles and founder of the Eagles Autism Foundation. "By investing in cutting-edge science and the infrastructure to move it forward, we're aiming not just to understand autism more deeply—but to transform what's possible for individuals and families worldwide."

Powered by Penn Medicine and CHOP's long history of partnering on transformative breakthroughs for the care of both children and adults, the Lurie Autism Institute is poised to make fresh discoveries that will reshape how we understand and treat autism.

Together, Penn Medicine and CHOP have joined forces to produce some of the most important scientific breakthroughs of the last 20 years, including lifesaving vaccines, the first FDA-approved CAR T cell therapy for cancers, gene therapy for blindness, hemophilia and neurologic disorders, and the first personalized, CRISPR-based gene-editing therapy for rare metabolic

*(continued on page 8)*

## INSIDE

- 2 Board of Trustees June Meeting Coverage; Faculty Senate Resolution and Letter to President Jameson
- 3 Deaths
- 6 Honors & Other Things
- 7 New Expense Reporting Deadline Shifts to 60 Days
- 9 Weekly Crime Reports
- 10 2025-2026 University Catalog; Of Record: Update to the Patent and Tangible Research Property Policies and Procedures; Update: Summer AT PENN; Recognized Holidays for FY 2026
- 11 The State of University City 2025 Report

## Board of Trustees June Meeting Coverage

The final stated meeting of the Board of Trustees for the 2024-2025 academic year was held on June 13, 2025, at the Inn at Penn.

Charles Howard, vice president for social equity and community and University chaplain, delivered the invocation.

Trustees chair Ramanan Raghavendran presented the following resolutions, which were approved:

- Appreciation for John Shoemaker, who completed his service on the Board of Trustees, and for Andrew S. Rachleff, who was designated a Trustee Emeritus
- To re-elect Julie Beren Platt as vice chair
- To elect the executive committee
- To elect the investment board
- To re-elect William P. Carey II as a term trustee
- To amend the Statutes of the Trustees to create a Governance Committee

During the Vice Chair's report, Ms. Platt presented a resolution to re-elect Ramanan Raghavendran as chair of the Board of Trustees through 2029, which was approved.

During his report, President Jameson described innovative and lifesaving research and medical breakthroughs. He noted that Penn is navigating significant headwinds and that funding cuts are occurring at a time when there is great potential to improve our future and save lives.

During the academic report, Provost Jackson noted recognized two senior leaders in the Provost's Office who will be leaving their roles this summer. Deputy Provost Beth Winkelstein, Eduardo D. Glandt President's Distinguished Professor of Bioengineering and Professor of Neurosurgery, will become the Provost at Northeastern University in August. Also, Dawn Bonnell, Senior Vice Provost for Research and the Henry Robinson Towne Professor of Engineering and Applied Science, will step down after 12 years. Provost Jackson thanked Dr. Winkelstein and Dr. Bonnell for their many contributions to the University. He then presented a resolution on faculty appointments and promotions, which was approved.

Senior Executive Vice President Craig Carnaroli presented the financial report. For the fiscal year ending on June 30, 2025, total net assets for the consolidated University are forecasted to increase \$1.7 billion to \$32.6 billion (\$22.9 billion for the academic component; \$9.7 billion for the health system). An increase in net assets from operations of \$789 million is projected for the consolidated University.

The health system is projecting an increase in net assets from operations of \$215 million before transfers to the Perelman School of Medicine (PSOM), and Penn's academic component is projecting an increase in net assets from operations of \$485 million.

For the budget for the fiscal year ending June 30, 2026, total net assets for the consolidated University are budgeted to increase \$1.1 billion to \$33.8 billion (\$23.5 billion academic component, \$10.3 billion health system). An increase in net assets from operations of \$363 million is budgeted for the consolidated University, with the health system budgeting an increase of \$291 million before transfers to PSOM and the academic component budgeting an increase of \$15 million.

## From the Faculty Senate Office

### Senate Executive Committee Votes to Endorse Letter from Professor Andrea Liu to President Larry Jameson

A June 2025 mail ballot of Senate Executive Committee members, in accordance with Faculty Senate Rules Section 9.A.vii., resulted in passage of a measure to endorse a letter to President Larry Jameson from Andrea Liu, Hepburn Professor of Physics. The full text of the letter can be found below, which was delivered to President Jameson on April 22, 2025, along with signatures of at least 650 faculty members. The result of the vote was 22 in favor, 19 opposed, and two abstentions.

At the Faculty Senate Executive Committee meeting on May 14, 2025, under New Business, nine SEC members introduced a proposal that SEC formally endorse the letter.

In accordance with Faculty Senate Rules Section 9.A.iii., which prescribes possible responses to actions taken by the Faculty Senate Executive Committee: "if twenty members of the Senate protest any such action of the Executive Committee by written petition within two weeks of its publication [by email to the Senate office]," then a vote must be taken of the full Senate membership (i.e., all standing faculty).

### Letter from Professor Andrea Liu to President Larry Jameson

*Transmitted April 22, 2025*

*Dear President Jameson,*

The assaults on American universities threaten bedrock principles not only of our university but of democracy itself, including freedom of thought, expression and association. We urge you to do the following:

- Stand publicly with fellow universities against unlawful demands that threaten academic freedom and university self-governance.
- Sue to restore cut funding.
- Sue to protect international scholars who are targeted for removal under dubious pretenses.
- Work with other universities, professional societies, faculty organizations and our alumni network to mount a coordinated opposition to these anti-democratic attacks.
- Set up emergency bridge support and legal funds to help international students and scholars at Penn who are targeted for removal.
- Set up emergency bridge support for early-career researchers affected by midstream grant cuts.

In the words of one of the founders of American democracy and of our university, Benjamin Franklin, "We must all hang together, or assuredly we will all hang separately." Now is the time to act together with other universities, before it is too late.

President Jameson and the Board of Trustees thanked Mr. Carnaroli for his many years of service to the University, as this was his last meeting before leaving Penn.

Jonathan Epstein, Executive Vice President for the Health System and dean of the Perelman School of Medicine, presented the Penn Medicine report. He remarked on the opening of a clinical space for the treatment of Williams Syndrome and the establishment of the Lurie Autism Institute.

E. Whitney Soule, vice provost and dean of admissions, presented the admissions report. She noted that there were 72,544 applications for the Class of 2029, which resulted in a 4.9% admission rate. She said that 49 states, six territories, and 95 countries are represented in the admitted students.

During the trustee committee reports, the Academic Policy Committee presented five resolutions, which were all approved. These resolutions created a:

- Master of communication and media industries in the Annenberg School for Communication
- Doctorate in nonprofit administration in the School of Social Policy and Practice
- Master of science in quantitative finance in the Wharton School
- Master of clinical informatics in the Perelman School of Medicine
- Master of science in biomedical informatics in the Perelman School of Medicine

The Budget & Finance Committee presented fourteen resolutions, which were approved. The resolutions were to:

- Authorize the spending rule for endowments for fiscal year 2026
- Authorize the fiscal year 2026 operating

budget for Penn's academic component

- Declare Penn's intent to reimburse capital costs with proceeds of borrowings
- Authorize the fiscal year 2026 operating budget for the University of Pennsylvania Health System (UPHS)
- Authorize the fiscal year 2026 capital budget for UPHS
- Declare UPHS's intent to reimburse capital costs with proceeds of borrowing
- Amend the bylaws of Penn Medicine to increase the threshold for real estate transactions requiring prior approval
- Authorize up to \$185 million for phase II of the project to construct and develop a comprehensive cancer center at Penn Presbyterian Medical Center
- Authorize up to \$270,402,000 to construct and develop a proposed multispecialty ambulatory care facility, Penn Medicine Montgomeryville
- Authorize up to \$18 million for development and construction of the Ruth and Raymond Perelman Center for Advanced Medicine atrium and exterior renovations
- Authorize a twelve-year, six-month new lease for Wharton San Francisco
- Authorize renovations and mechanical, electrical, and plumbing upgrades to the Inn at Penn in the amount of \$46,479,000
- Authorize a new physical sciences building and renovation design development or David Rittenhouse Laboratories for an additional \$12.25 million
- Authorize the ground lease and redevelopment of Sansom Place West

Mr. Raghavendran also presented resolutions of appointments to the Board of Penn Medicine and Boards of Advisors, all of which were approved.



## Deaths

### Charles Dwyer, Graduate School of Education and Wharton School

Charles Edward Dwyer, an emeritus associate professor of education in the Graduate School of Education and a faculty member in the Wharton School's executive education programs, died on January 27. He was 87.

Born in Buffalo, New York, Dr. Dwyer graduated from St. Joseph's Preparatory School, then earned his undergraduate degree in economics from St. Joseph's University, where he was an avid jazz trombonist and debater. After graduating, he pursued advanced studies at Cornell University, where he obtained a master's degree in industrial organization in 1962 and a PhD in the philosophy of education in 1966.

Right after graduating from Cornell, Dr. Dwyer joined the faculty of Penn's Graduate School of Education as an assistant professor of education. Five years later, in 1971, he became an associate professor of education. Over a tenure at Penn that spanned more than four decades, Dr. Dwyer integrated his educational background with several executive education initiatives based in the Wharton School. In 1975, he was named the director of Wharton's Management and Behavioral Science Center (a role he held until 1987), and over the next 35 years, he continued to make his mark on Wharton's executive education programs, serving as faculty coordinator for the programs at one point. He also taught in the master of science in organizational dynamics program in Penn's College of General Studies (precursor to today's College of Liberal & Professional Studies) and chaired the board of the Wharton Center for Applied Research. In 2005, he retired from Penn and assumed emeritus status, but continued to lecture in the Graduate School of Education and in Wharton's executive education programs for several more years.

At Penn, Dr. Dwyer was renowned for his dedication to teaching and mentoring graduate students. In 1971, he won the Lindback Award for Distinguished Teaching, and two years later, when Penn faculty recipients of Lindback awards formed a society to foster campus-wide improvement in teaching quality, Dr. Dwyer was elected its inaugural president. Among his many contributions was the immensely popular course *Managing People*, which he taught to thousands of students over three decades. He also taught the popular course *Logic and Educational Inquiry* in the Wharton Executive Education programs. In 1972, Dr. Dwyer was awarded the Outstanding Civilian Service Medal by the United States Army for his persuasive and successful efforts defending the ROTC program at Penn—a testament to his commitment to education and service.

Beyond academia, Dr. Dwyer shared his expertise globally by teaching seminars for business executives from leading companies. He was also a renowned consultant whose client list included IBM, Xerox, AT&T, General Electric, the New York Stock Exchange, Polaroid, Texaco, Nabisco, General Mills, Pepsi Cola, the U.S. De-



Charles Dwyer

partment of Justice, and the Federal Reserve system. In 1983, Dr. Dwyer established the Swarthmore Academy in Swarthmore, Pennsylvania, a private high school that served a diverse student population and provided generous scholarship support. He chaired the board of the Swarthmore Academy for many years. He wrote two books, *The Shifting Sources of Power and Influence* (1991) and *Managing People* (1993), and widely delivered a popular lecture called "How to Get Anyone to Do Anything You Want." In addition to his duties at Penn, Dr. Dwyer also taught at Cornell University, Johns Hopkins University, Temple University, and St. Joseph's University.

Dr. Dwyer is survived by his children, Mark, Michael, Deborah, and Kathryn; nine grandchildren; and three great-grandchildren. Memorial donations can be made to the Dwyer Memorial Scholarship at Saint Joseph's University at [giving.sju.edu/Dwyer](http://giving.sju.edu/Dwyer) or can be mailed to University Advancement, Saint Joseph's University 5600 City Ave, Philadelphia, PA 19131.

### Jeffrey Ishibashi, Genetics

Jeffrey "Jeff" Miki Ishibashi, a Senior Research Investigator in the Department of Genetics in the Perelman School of Medicine, died in a biking traffic accident on May 8. He was 50.

Born in Hamilton, Ontario, Dr. Ishibashi graduated from the University of Guelph and the University of Ottawa.

In 2009, Dr. Ishibashi came to Penn as a Research Investigator in the lab of Patrick Seale in the Institute for Diabetes, Obesity, and Metabolism in the Perelman School of Medicine. In 2020, he became the Associate Director of Research at the Penn Gene Therapy Program. In February 2025, he returned to the Perelman School of Medicine by joining the department of genetics as a Senior Research Investigator in the lab of Klaus Kaestner. He was also a visiting scholar with the Purdue Institute for Cancer Research.

Dr. Ishibashi is survived by his mother, Barbara; father, Robert; brother, Brent (Suzy); nieces, Kirin and Kendra.

In lieu of flowers, donations can be made to a charity of the donor's choice.

### Richard Weller, Landscape Architecture

Richard J. Weller, an emeritus professor of landscape architecture in the Weitzman School of Architecture, died on May 15 in Perth, Australia. He was 61.

In 1986, Mr. Weller earned a bachelor of landscape architecture from the University of New South Wales in Sydney, Australia. Before coming to Penn, Mr. Weller was the Winthrop Professor of Landscape Architecture at the University of Western Australia, where he also directed the Australian Urban Design Research Centre (AUDRC). In 2013, he joined Penn's faculty as chair of the department of landscape architecture in the Weitzman School, a position he held through 2022. While at Penn, in 2019 he co-founded, with Weitzman School Dean Fritz Steiner, the

McHarg Center for Urbanism and Ecology. He was also the founding creative director of the interdisciplinary journal of landscape architecture *LA+*.

In four decades of architectural practice, including as co-director of the design firm Room 4.1.3 and director of the Australian Urban Design Research Center, Mr. Weller worked as a scholar and a consultant, specializing in the formative stages of projects ranging from gardens to cities. His work was exhibited internationally, including at the Venice Architecture Biennale; MAXXI; and the Solomon R. Guggenheim Museum. His design projects included the master plan for the Perth foreshore; the master plan and landscape design for the National Museum of Australia, Canberra; and the Docklands in Melbourne. Among his many initiatives to bridge the academy and the profession, he helped write the Landscape Architecture Foundation's "New Landscape Declaration" (2016) and helped to design the Green New Deal Superstudio (2020-2021); in 2023, his work was the subject of retrospective exhibition at the Melbourne School of Design entitled *The Landscape Architecture of Richard Weller*. In 2017 and 2018, Mr. Weller was named by DesignIntelligence as one of the "25 most-admired educators" in the U.S. design industry. In 2024, he received the Australian Institute of Landscape Architects (AILA) President's Award, recognizing his lifetime of achievement in landscape architecture.

Mr. Weller wrote or edited nine books and authored more than 150 academic papers, book chapters, and articles. He co-edited *Transects* (2014, with Megan Talarowski), a history of the department of landscape architecture at Penn, and *Design with Nature Now* (with Fritz Steiner, Karen M'Closkey, and Billy Fleming), a global survey of advanced ecological design projects and essays published in 2019. His books also included *Boomtown 2050: Scenarios for a Rapidly Growing City* (2005), *Beautiful China: Reflections on Landscape Architecture in Contemporary China* (2021, with Tatum Hands), and *Made in Australia: The Future of Australian Cities* (2013, with Julian Bolleter). In recent years, his research focused on global flashpoints between biodiversity and urban growth.

"Richard was as bold, witty, and beautiful as his prose and drawings," said Dean Steiner. "In grief, I find hope and joy that many others will discover Richard as I did: through what he wrote and drew and painted and designed."

The Weitzman School will hold a tribute to Mr. Weller on September 12, 2025. [Click here](#) for more information and to read reminiscences of Mr. Weller.

The Weitzman School will hold a tribute to Mr. Weller on September 12, 2025. [Click here](#) for more information and to read reminiscences of Mr. Weller.



Richard Weller



Jeffrey Ishibashi

### To Report A Death

*Almanac* appreciates being informed of the deaths of current and former faculty and staff members, students and other members of the University community. Call (215) 898-5274 or email [almanac@upenn.edu](mailto:almanac@upenn.edu).

## Penn Nursing 2025 Faculty Award Recipients

(continued from page 1)

ginalized populations. As a women's health and adult/gerontology primary care nurse practitioner at the Mazzoni Center, they provide comprehensive primary care, ensuring that patients receive culturally responsive, affirming care that respects their identities and lived experiences. They demonstrate a deep commitment to holistic, patient-centered practice. Beyond clinical care, Mx. Benchimol has transformed nursing education at Penn by integrating topics that prepare future healthcare providers to deliver quality care. Their leadership in policy reform has driven meaningful systemic change within healthcare institutions. Through mentorship, scholarship, and advocacy, Mx. Benchimol fosters a more compassionate healthcare environment for all.

### Dean's Award for Exemplary Professional Practice

This award is for demonstrating excellence in clinical or professional practice and the integration of practice to scholarship and teaching. Excellence is defined as evidence of significant and outstanding contributions to professional practice through funded projects, publications/reports, and professional, institutional, and/or national leadership.

Jessica Strohm Farber is a distinguished clinician, educator, and leader whose exemplary practice has significantly advanced pediatric acute care nursing. As a nurse practitioner in the pediatric intensive care unit at the Children's Hospital of Philadelphia (CHOP), she delivers compassionate, evidence-based care while spearheading initiatives like the Unplanned Extubation Harm Indicator Project, which improves outcomes for critically ill children. Her leadership across hospital committees further highlights her commitment to patient safety and clinical excellence. Beyond her clinical work, Dr. Strohm Farber is a respected scholar and educator who integrates research and practice in numerous publications, including contributions to premier pediatric nursing resources. As the program director of pediatric acute care and neonatal nurse practitioner programs at Penn Nursing, she mentors students and faculty. Her national leadership and dedication to advancing pediatric nursing extends beyond academia to national pediatric acute care organizations and community health initiatives. Recognized with numerous awards for her clinical, scholarly, and mentoring excellence, she continues to elevate pediatric nursing and inspires the next generation of healthcare leaders.

Rebecca Clark, an assistant professor of perinatal nursing, midwifery, and women's health, is a distinguished nurse scientist whose exemplar-

ily practice has profoundly impacted maternal-child health and the engagement of clinical nurses in evidence-based practice at Pennsylvania Hospital. As a leader in nursing research and innovation, she has guided over 50 nurses through evidence-based practice residencies, working with Penn Medicine's Center for Evidence-Based Practice to drive meaningful clinical improvements. Her commitment to advancing maternal health has been recognized with a Betty Irene Moore Fellowship, wherein Dr. Clark is developing a communication bundle to address racially disparate communication and improve maternal-child outcomes. Dr. Clark's influence extends beyond the hospital, with leadership roles on the Pennsylvania Maternal Mortality Review Committee and multiple research initiatives addressing health disparities. Her scholarly contributions, including numerous funded projects and peer-reviewed publications, inform practice and policy at both local and national levels. A dedicated educator, Dr. Clark teaches graduate level research methods, equipping nurses with critical appraisal skills to enhance their practice. With numerous data-based publications and national awards, she exemplifies scholarly excellence, having shaped policy and advanced maternal health practices. Through her interdisciplinary collaborations, Dr. Clark continues to drive systemic change in maternity care and promote equitable birth outcomes nationwide.

### Dean's Award for MSN-MPN-MSNS-DNP Scholarly Mentorship

This award recognizes service as an exceptional mentor to students in the introduction and participation in exemplary clinical nursing scholarship that includes engagement in research, publications in professional journals, or presentations at scientific conferences.

Dawn Bent is a dedicated educator and mentor whose leadership has profoundly shaped the scholarly and professional trajectories of DNP students in Penn Nursing's nurse anesthetist program. As program director for the past seven years, Dr. Bent has played a pivotal role in steering the program from a master's to a doctoral curriculum, ensuring students are equipped to design, implement, and evaluate impactful scholarly projects. Her mentorship extends beyond the classroom, guiding students through research that advances clinical practice, with many mentees presenting at prestigious conferences and publishing in peer-reviewed journals. Dr. Bent's commitment to fostering excellence is evident in her ability to inspire confidence, resilience, and professionalism in her students. She actively creates opportunities for scholar-

ly engagement, encourages leadership development in her students, and provides them unwavering support. Her mentorship has empowered countless students to reach their goals. Dr. Bent is devoted to mentoring students in their scholarly pursuits, fostering scientific curiosity, confidence, and resilience. Through her unwavering support, she empowers future nurse anesthetists to excel academically and professionally, shaping the next generation of leaders in the field.

### Dean's Award for Teaching Excellence—Undergraduate Level; Student Nurses at Penn Undergraduate Award for Teaching

The Dean's Award is for demonstrating excellence in clinical or professional practice and the integration of practice to scholarship and teaching. Excellence is recognized by evidence of significant and outstanding professional and institutional and/or national leadership. The Undergraduate Award is for excellence in teaching and for the exceptional teaching experiences provided that stimulate, inspire, and challenge our undergraduate students.

Marissa DeCesaris Siegel, a practice assistant professor, is an exceptional educator whose dedication to undergraduate teaching has profoundly impacted nursing students who are engaging with psychiatry for the first time. As a Penn Nursing faculty member, she creates a safe, engaging, and intellectually stimulating learning environment, ensuring students approach psychiatric nursing with both confidence and compassion. Through personal stories, real-world cases, and interactive activities, she brings psychiatric concepts to life, fostering a deeper understanding that goes beyond textbook knowledge. Dr. Siegel's commitment to student success extends beyond the classroom. She provides thoughtful, clear answers to complex questions and encourages students to think holistically about patient care. Recognizing that students enter her course with diverse experiences and challenges, she ensures that they feel supported while meeting course requirements. Her sensitivity, clarity, and unwavering dedication to her students set her apart as an outstanding educator.

### Dean's Award for Teaching Excellence—Graduate/Doctoral Level

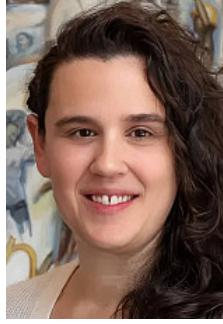
This award is for demonstrating excellence in clinical or professional practice and the integration of practice to scholarship and teaching. Excellence is defined as evidence of significant and outstanding contributions to professional practice through funded projects, publications/reports, and professional, institutional, and/or national leadership.

Meghan Fitzpatrick is an advanced senior lecturer and program director of the nursing & healthcare leadership MSN program at Penn Nursing. A dedicated educator and mentor, she has profoundly impacted graduate and doctoral students through her expertise in nursing administration, leadership, and healthcare finance. Drawing from her experience as both a nursing manager and collegiate educator, she makes

(continued on page 5)



Casey Benchimol



Rebecca Clark



Marissa Siegel



Jessica Farber



Dawn Bent



(continued from page 4)

## Penn Nursing 2025 Faculty Award Recipients

complex topics accessible and engaging while fostering a structured, supportive learning environment where students feel both challenged and encouraged. Dr. Fitzpatrick is known for her innovative teaching methods, integrating case studies, interactive learning modules, and real-world applications to prepare students for leadership roles in healthcare. Beyond the classroom, she is a committed mentor, offering individualized guidance in students' scholarly work, career development, and leadership opportunities. Widely praised for her accessibility and dedication, Dr. Fitzpatrick builds lasting connections with students and alumni, going "above and beyond" to ensure their success and growth as future nurse leaders.



*Meghan Fitzpatrick*

### Dean's Award for Undergraduate Scholarly Mentorship

This award is for service as an exceptional mentor to undergraduate students in the introduction of and participation in undergraduate nursing research, demonstrating the ability to assume leadership for building a mutually rewarding relationship; be accessible; provide guidance, advice, and feedback; and foster teamwork.

Karen B. Lasater, an associate professor of nursing, is an exceptional mentor whose dedication to undergraduate scholarly development has profoundly shaped the academic and professional trajectories of her students.



*Karen Lasater*

Through her hands-on guidance, she empowers students to engage in meaningful research, fostering critical thinking and methodological rigor. As an advisor and researcher, Dr. Lasater provides individualized mentorship, ensuring that her students not only develop strong research skills, but also gain confidence in their academic pursuits. Beyond research, Dr. Lasater has mentored students who are exploring summer opportunities, graduate studies, and professional pathways. Her accessibility and responsiveness create a supportive environment where students feel encouraged to pursue ambitious goals, with many considering PhD programs. She cultivates an inclusive and intellectually stimulating research community, ensuring that students feel both challenged and supported. Her accessibility, advocacy, and commitment to student success create an inclusive, intellectually stimulating environment that empowers students to pursue ambitious academic and professional goals.

### Dean's Award for Distinguished Teaching—Undergraduate Level

This award is for service as an exceptional mentor to undergraduate students in the introduction of and participation in undergraduate

nursing research, demonstrating the ability to assume leadership for building a mutually rewarding relationship; be accessible; provide guidance, advice, and feedback; and foster teamwork.

Amanda Bettencourt is an assistant professor in the department of family and community health. As director of the course NURS 2250: Pediatric Nursing from 2021 to 2024, she transformed the undergraduate learning experience, fostering an engaging and inclusive classroom where students developed critical thinking skills and compassionate, evidence-based nursing practices. Her expertise in pediatric critical care, burn nursing, and implementation science enriches her teaching, integrating nursing practice with broader healthcare and societal contexts. Beyond the classroom, Dr. Bettencourt is a dedicated mentor, providing invaluable academic and professional guidance to students, faculty, and student organizations. She supports students and colleagues in their research, career development, and leadership, inspiring the next generation of nurses with her inclusive and transformative approach to education. She models compassionate leadership, having served as AACN president and as a peer mentor in Penn Nursing. Through her innovative teaching, mentorship, and commitment to student success, Dr. Bettencourt has profoundly impacted hundreds of aspiring nurses, setting a standard for excellence in undergraduate nursing education.



*Amanda Bettencourt*

### Dean's Award for Distinguished Teaching—Graduate Level

This award recognizes demonstrating excellence in graduate-level teaching that includes but is not limited to knowledge of the subject matter; ability to stimulate student interest and foster their professional development; use of innovative methods of teaching; ability to present subject matter clearly; and interest, accessibility, and willingness to work with students.

Alison Buttenheim is a professor of nursing and health policy. A gifted educator and mentor, Dr. Buttenheim has profoundly shaped the academic and professional trajectories of her students through courses like PUBH 6080/ NURS 6130 and Design for Health Behavior Change. Her expertise in behavioral economics and human-centered design is matched by her ability to create an inclusive, dynamic learning environment where students at all levels feel empowered to apply complex theories to real-world health challenges. Dr. Buttenheim's teaching transcends traditional methods, incorporating interactive discussions, prototype-building exercises, and collaborative prob-



*Alison Buttenheim*

lem-solving. Her unwavering commitment to student success extends beyond the classroom, providing invaluable mentorship, research opportunities, and career guidance. Through her innovative teaching and dedication to fostering the next generation of nurse leaders, Dr. Buttenheim exemplifies the highest standards of distinguished graduate level education. Her unwavering dedication to her students' growth and instills confidence in their ability to reach their goals. Her outstanding and sustained contributions to teaching and mentorship produce exceptional nurse leaders.

### Doctoral Student Organization Barbara J. Lowery Faculty Award

This award is for advancing nursing science through exemplary and unwavering doctoral student mentorship.

Sarah Kagan, a professor of gerontological nursing, has been a fierce advocate for Penn Nursing PhD students, consistently championing their needs and success. Whether advocating for students in curriculum committee meetings, supporting the expansion of the *Journal of Nursing Doctoral Students Scholarship's* (JNDSS), or leading PhD writing initiative workshops, Dr. Kagan has worked tirelessly to provide a solid foundation for doctoral students, helping to guide them on their journey to becoming PhD-prepared nurses.



*Sarah Kagan*

### GSO Outstanding Nurse Educator Award

This award recognizes excellence in teaching at the MS/MSN and DNP levels, including, but not limited to, knowledge of the subject matter; ability to stimulate student interest and professional development; ability to present subject matter clearly; and interest, accessibility and willingness to work with students. Recipients also demonstrate innovative teaching methods and are responsive to students' ideas and feedback.

Loretta A. Sernekos, an advanced senior lecturer, is an exceptional and inspiring educator who has profoundly impacted her students' careers. Teaching one of the most challenging courses in the nursing school is no small feat, yet she does so with grace, dedication, and a deep commitment to student success. She instills in her students the importance of patient-centered care and education, ensuring they never lose sight of what truly matters—the patient. Her memorable advice to avoid getting "stuck in the weeds" continues to guide her students beyond the classroom, shaping them into compassionate and competent nurses. Her unwavering dedication and profound influence on future nurses have set a standard of excellence that will continue to inspire generations of nurses to come.



*Loretta Sernekos*

# Honors & Other Things

## 2025 Penn Engineering Senior Design Project Competition Award Winners

At the Penn Engineering 2025 Senior Design Project Competition, four teams of graduating seniors won awards for demonstrating how to improve stroke recovery, automate eye exams, turn old tires into battery components and improve the efficiency of AI computation. The finals took place on May 2 at Amy Gutmann Hall and the four winners received awards in categories ranging from social impact to technological innovation.

Robert Ghrist, Penn Engineering's associate dean for undergraduate education, joined Lyle Brunhofer, ENG'14, GEN'14, vice president and senior design chair of the Engineering Alumni Society, to present the awards. The four winning teams, voted on by alumni judges, are:

### Judges' Choice Award: ReFLEX (Bioengineering)

*Students:* Udit Garg (ENG'25, GEN'25), Aditya Gowd (ENG'25, GEN'25), Ryann Joseph (ENG'25), William Qi (EE'25, GEN'26), and Christopher Wun (ENG'25, GEN'25)

*Advisor:* Erin Berlew (Gr'22), research associate, Developmental Mechanobiology and Regeneration Lab

The Judges' Choice Award, which recognizes overall excellence, went to bioengineering's ReFLEX, which developed a novel tool for improving stroke recovery.

Today, the gold standard for stroke recovery is functional electrical stimulation (FES), which involves sending electrical signals to muscles. However, FES is costly and doesn't always work.

New research has shown that pairing FES with patients' imagination produces better results: when the brain imagines moving the body, and those muscles receive electrical stimulation, the brain-body connection strengthens.

To take advantage of this finding, ReFLEX developed a headset that reads patients' brainwaves, using AI to interpret the motions they imagine, before sending electrical signals to the relevant muscles.

Following their success at Senior Design, the team plans to file a patent and begin clinical testing.

### Technology and Innovation Award: Lattice (Electrical and Systems Engineering)

*Students:* Zirun Han (C'25, ENG'25, GEN'25), Alexander Kyimpokin (EE'25, GEN'26), Rose Wang (ENG'25, W'25, GEN'26), and Spencer Ware (ENG'25, GEN'26)

*Advisors:* Troy Olsson and Deep Jariwala, associate professors in electrical and systems engineering

One of the greatest AI challenges is energy consumption. Next year, according to the International Energy Agency, the world's AI data centers will consume nearly as much power as the country of Germany.

In large part, this is due to the demands of vector-matrix multiplication, a key AI mathematical operation. Increasing the size of the matrices, a necessity for advancing AI, exponentially increases the required number of computations.

Using resources at the Singh Center for Nanotechnology, Lattice developed a new chip to solve this problem. Their device leverages so-

called "analog" computing to physically embed certain parts of the process in the chip itself.

The result is a chip for AI that uses less energy, demonstrating that vector-matrix multiplication can be accomplished at lower cost.

### Leadership Award: Prism Optics (Bioengineering)

*Students:* Daniel Botros (ENG'25, GEN'26), Fady Fahmy (ENG'25, GEN'26), Daniel Jacobsohn Serebrinic (ENG'25, GEN'25), Danish Mahmood (ENG'25), and Aarush Sahni (C'25, ENG'25, GEN'25)

*Advisor:* Erin Berlew (Gr'22), research associate, Developmental Mechanobiology and Regeneration Lab

Hundreds of millions of people around the world live far from a practicing optometrist. This means that they can't get glasses, since without an eye exam, it's impossible to know their prescription.

To solve this problem, Prism Optics developed a novel, low-cost device that automatically conducts eye exams, expanding access to eye care. Using audio prompts, the device guides users through the process, then prints out their prescription at the end.

Starting this summer, the team will begin clinical trials in collaboration with doctors at Penn Medicine, to validate the device against prescriptions from licensed optometrists.

### Social Impact Award: ReTread Power, by JAAC (Materials Science and Engineering)

*Students:* Chiara Bruzzi (ENG'25, GEN'26), Julia Dase (ENG'25, GEN'26), Anna Hallac (C'25, ENG'25, GEN'26), and Amelia Pilot (C'25, ENG'25)

*Advisor:* Eric Huang, senior lecturer, materials science and engineering

Every year, millions of tires wind up in the trash or are burned for disposal, releasing toxic chemicals into the environment. But what if those tires could be put to better use?

JAAC (pronounced "Jack") has developed a means of stripping a key toxic chemical from disposed tires, and turning the remaining material into hard carbon, a low-cost alternative to graphite, which can be used to build lithium- and sodium-ion batteries.

In a world that is ever more reliant on battery technology, the process could turn the millions of tires in landfills and burn pits into a valuable resource: the precursor to more clean energy.

## Four Alumni: 2025 Knight-Hennessy Scholars

Four recent graduates (including a member of the Class of 2025) each have been awarded a 2025 Knight-Hennessy Scholarship, receiving up to three years of financial support to pursue a graduate degree and global leadership training at Stanford University.

Penn's 2025 Knight-Hennessy Scholars are 2025 graduate Aravind Krishnan, from Newark, Delaware; 2021 graduate Carson Eckhard, from Tampa, Florida; 2020 graduate Meera Menon, from San Ramon, California; and 2020 graduate Jun Hou Shin, from Seoul, South Korea.

They are among this year's 84 scholars from 25 countries, selected based on their "demonstration of independence of thought, purposeful leadership, and a civic mindset." The scholarship program, now in its eighth year, is designed

to prepare them "to be visionary, courageous, and collaborative leaders who address complex challenges facing the world."

Mr. Krishnan plans to pursue an MD and a PhD from Stanford's School of Medicine. At Penn, he graduated in May 2025 from the Roy and Diana Vagelos Program in Life Sciences and Management with dual degrees from the College of Arts & Sciences and Wharton School. He studied molecular and cell biology, healthcare management and policy, and statistics. Mr. Krishnan co-founded ToxiSense, which develops more sustainable and cost-effective assays for bacterial contamination in medical products and for bacterial infections, a project that won the Perelman Grand Prize at the Penn Venture Lab Startup Challenge. He has conducted research in the Perelman School of Medicine's Greenberg Lab, where he worked on understanding DNA damage repair mechanisms and telomere biology. Mr. Krishnan aims to be a physician-scientist focused on combining science and care delivery for underserved disease areas, like infectious disease.

Ms. Eckhard plans to pursue a JD from Stanford Law School and a PhD in history from the School of Humanities and Sciences. At Penn, she earned a bachelor's degree in history and English from the College of Arts & Sciences and co-founded Project HOPE, which won the 2021 President's Engagement Prize. Ms. Eckhard was a founding board member and vice chair of the Liberation Foundation, a Philadelphia-based nonprofit that supports incarcerated Pennsylvanians. As a 2023 Marshall Scholar, Ms. Eckhard studied history at the University of Edinburgh and the University of Cambridge, where she is currently a prize fellow at the Centre for History and Economics.

Ms. Menon plans to pursue an MBA from Stanford's Graduate School of Business and a master's degree from the Graduate School of Education. At Penn, Ms. Menon earned a bachelor's degree in economics from Wharton. She co-founded the Unscripted Project, which won the 2020 President's Engagement Prize. The Unscripted Project is a nonprofit that uses improvisational theater to equip students with life skills, like speaking confidently. Ms. Menon aspires to lead an education philanthropy that strengthens nonprofits through long-term funding and building capacity, ensuring they can scale sustainably and serve students effectively.

Mr. Shin plans to pursue a JD from the Stanford Law School. At Penn, he earned a bachelor's degree in political science, concentrating in international relations, from the College of Arts & Sciences. As an active-duty Korean military officer, he recently served in the Office of the President of South Korea, where he represented the Korean National Security Office in facilitating bilateral meetings with the United States and led efforts to strengthen multinational cybersecurity partnerships. Before his military service, he provided legal assistance and translated for asylum-seekers at the Korea Legal Aid Corp. Mr. Shin aspires to use his multicultural background to resolve international disputes and spearhead inclusive negotiations.

The Center for Undergraduate Research and Fellowships serves as Penn's primary information hub and support office for students and alumni applying for major grants and fellowships.

(continued on page 7)



(continued from page 6)

### Modupe Coker: 2025 Hedwig van Ameringen ELAM Fellow

Modupe Coker, an associate professor in the department of basic and translational sciences at Penn Dental Medicine, has been selected as a 2025-2026 fellow of the Hedwig van Ameringen Executive Leadership in Academic Medicine (ELAM) program. This is the 31<sup>st</sup> class of ELAM fellows, which number over 1,600 and serve in leadership positions at 300 academic health centers around the world. The 2025-2026 cohort includes 100 fellows from across the country.

Hosted by Drexel University College of Medicine, ELAM is the only longitudinal program in North America dedicated to preparing women for senior leadership roles in schools of medicine, dentistry, public health and pharmacy. This competitive program is dedicated to developing the professional and personal skills required to lead and manage in today's complex healthcare environment, with special attention to the unique challenges facing women in leadership positions.

Dr. Coker serves as assistant dean of clinical and translational research and director of the Center for Clinical and Translational Research (CTTR) at Penn Dental Medicine. A key leader in shaping the school's clinical research landscape, she drives forward innovative initiatives that strengthen institutional capacity and foster a culture of collaboration and excellence. In her role as director of CTTR, Dr. Coker leads strategic efforts to expand interdisciplinary research, streamline clinical research operations, and build infrastructure that supports long-term growth. Her work is particularly focused on advancing research data management systems that promote integrity, accessibility, and efficiency across the research lifecycle. In both of her roles, she provides comprehensive oversight of clinical research activities and works closely

with investigators across a broad range of studies to ensure their success.

The leadership program includes a series of virtual modules during the summer, a curricular cycle from the fall session to the spring session, and culminates with the Leaders Forum in the spring of 2026, where the fellows present their institutional action projects.

### Jasmine E. Harris: 2025 LSA John Hope Franklin Prize

Jasmine E. Harris, a professor of law in Penn Carey Law, was named the recipient of the 2025 John Hope Franklin Prize in the Law & Society Association's annual awards.

Each year, the LSA honors leading international scholars for their groundbreaking publications and contributions to the study of law and society. This year, twenty award winners were recognized.

Ms. Harris was named a co-winner of the 2025 John Hope Franklin Prize—recognizing exceptional scholarship in the field of race, racism, and the law—for “The Political Economy of Conservatorship,” published in the *UCLA Law Review*.

“As an interdisciplinary scholar, it is truly an honor to receive the John Hope Franklin Award from the Law & Society Association for my work at the intersection of disability and race,” said Ms. Harris. “Disability labels have played a prominent role in state-sponsored subordination and economic and political control over racialized populations. Conservatorship is an extraordinary legal device that strips individuals of le-



Jasmine E. Harris

gal capacity and personhood.”

Ms. Harris's article reinterprets conservatorship as a tool of racial and economic subordination, weaving legal history, disability theory, and racial critique into an incisive analysis of how disability law has been used to extract labor and property from Black and Indigenous communities.

“By connecting conservatorship's historical deployment to its contemporary operation, Harris exposes the system's deep-seated structural harm,” said the LSA in its profiles of 2025 award and prize recipients. “Her article exemplifies socio-legal scholarship at its finest and proposes an abolitionist framework with broad implications for race, disability, and legal reform.”

Ms. Harris is a law and inequality scholar with expertise in disability law, antidiscrimination law, and evidence. Her work addresses the relationship between law and equality, focusing on the law's capacity to advance social norms of inclusion in the context of disability. She consults with federal and state lawmakers and legal advocates on legislative and policy reforms related to disability laws. She also serves on the board of directors for the Arc of the United States and as chair of the legal advocacy subcommittee, which advises the organization on impact litigation.

### K. Jane Muir: 2025 ENA Nurse Researcher Award

K. Jane Muir, an assistant professor in Penn Nursing's department of family and community health, has won the 2025 Nurse Researcher Award from the Emergency Nurses Association (ENA). She will be honored at the ENA annual conference in New Orleans, Louisiana, in September.

This award honors individuals who have significantly contributed to the field of emergency nursing through research, dissemination of findings, and/or use of research to improve patient outcomes. The award also aims to highlight exemplary performance in leadership, practice, education, advocacy, and research in emergency departments.

“It is an honor to be acknowledged by the ENA, the leading advocacy organization for emergency nurses nationally and internationally,” said Dr. Muir, who is also an assistant professor of family and community health in the department of emergency medicine at Penn Medicine, as well as a senior fellow in the Center for Health Outcomes and Policy Research and in the Leonard Davis Institute of Health Economics. “The ENA has been influential on my career as a clinician and researcher since I became an emergency department nurse nine years ago. I am excited to continue advancing research with collaborators in hospital emergency departments and communities to foster safe, high-quality care to patients who need emergency care—and to cultivate the well-being of emergency nurses in the U.S. who care for patients during their most stressful and uncertain moments.”



K. Jane Muir

## New Expense Report Deadline Shifts to 60 Days—Effective July 1, 2025

**What's Changing:** Starting July 1, 2025, the deadline to submit expense reports in Concur will be reduced from 182 days to 60 days to comply with IRS guidelines.

For travel reports, the 60-day clock will start from the trip's end date. For non-travel reports, the clock will start from the transaction date.

**Tax Implications:** Reports submitted more than 60 days after the expense date, without an approved exception, will be treated as taxable income subject to applicable payroll tax withholding. Any imputed income will be reflected in the employee's next pay period and an email notification will be sent to the employee.

*Please note:* All reimbursements will continue to be paid through Concur.

### Implementation Timeline

You are encouraged to submit any unsubmitted expense reports as soon as possible.

- Reports submitted before July 1, 2025 will follow the 182-day policy
- Reports submitted on or after July 1, 2025 must comply with the new 60-day policy

### What Expense Report Submitters Need to Do

1. Enter Trip Begin/End Dates for all travel expense reports
2. Provide explanation in Concur for late reports:
  - a. Travel reports: Add explanation in the ‘Notes to Approver’ field on the report header
  - b. Non-travel reports: Add explanation in the ‘Comment’ field on each expense entry
3. Reports will be returned to the submitter if the supplemental approver does not select whether the late submission qualifies as an approved exception. Submitters will be notified by email and must re-submit the report.

**Quick Training:** Watch this [short video snippet](#) for a walkthrough of new steps.

**Additional Questions?** Contact your school or center business office or [BEN HELPS](#).

—Penn Procurement Services

## \$50 Million Gift to Establish the Lurie Autism Institute at Children's Hospital of Philadelphia and Penn Medicine

(continued from page 1)

diseases. The two institutions are also home to a host of pediatric-to-adult transition programs, including those for sickle cell anemia, congenital heart disease, digestive diseases and Williams syndrome that help families navigate the path to healthier adulthoods with chronic conditions.

"This gift will harness our longstanding, combined expertise to advance much-needed research to help people with autism spectrum disorder," said Jonathan A. Epstein, dean of the Perelman School of Medicine and Executive Vice President of the University of Pennsylvania for the Health System. "The Lurie Family's commitment to this critical area of focus is inspiring, and we greatly appreciate the trust placed in us as we accelerate the next generation of ASD research and treatment."

"The Lurie Autism Institute will enable us to find quicker and better answers for children and adults living with this complex condition," said Madeline Bell, CEO of Children's Hospital of Philadelphia. "We are so grateful to the Lurie Family for their ongoing support of autism research, which will build on the success of established programs like the Center for Autism Research at CHOP and the Autism Spectrum Program of Excellence at Penn by bringing the top experts in the field together to make breakthroughs in autism research and care."

The institute will lead a bold effort to transform the understanding and care of autism, including efforts to:

- Develop a better understanding of the genetics and complex biological processes underlying autism, including the role of environmental and epigenetic factors in its development
- Uncover how the diverse behaviors among the autism spectrum manifest and evolve across the lifespan
- Develop more advanced lab models to understand how autism impacts brain function across the lifespan
- Explore why some individuals with autism have minimal speaking ability, using insights from brain and language science
- Use AI to analyze large-scale biological and behavioral data to identify new treatment targets and existing drugs that may be repurposed for ASD
- Conduct research to study autism-related genes and their potential as therapeutic targets
- Prepare to launch clinical trials that prioritize both behavioral and pharmacological interventions for ASD
- Launch the Next-Generation Program in Autism Bioscience, a certificate program for PhD trainees and postdocs
- Serve as global conveners for the best ideas in the field by hosting an annual international symposium and awarding the new Lurie Autism Institute Prize for ASD Research

An international search will soon be underway to appoint the institute's founding director—a visionary leader with clinical and scientific expertise who will help drive its innovative mission forward.

The Lurie Family has a long history of supporting individuals living with ASD. In 1977, Nancy Lurie Marks founded the Nancy Lurie Marks Family Foundation (NLMFF), which had a mission of helping individuals with autism lead fulfilling and rewarding lives. The NLMFF established the Lurie Center for Autism at Massachusetts General Hospital in 2009, and Jeffrey Lurie created the Eagles Autism Foundation in 2018. The Lurie Autism Institute at CHOP and Penn Medicine will complement and build upon the history of success of these other organizations as well as create new opportunities to understand the fundamental science of autism and improve the lives of individuals with ASD.

"We are honored to be part of making the Lurie Autism Institute possible because we know how much remains to be discovered about the nature of autism; the educational, social, and life issues for individuals and families with autism; and for society's understanding of autism," said Nancy Lurie Marks. "CHOP and Penn Medicine have an incredible record of successful collaborations that result in real answers for people, and we know they will come together to accelerate discoveries and therapies for individuals living with ASD."

(continued from page 1)

## Penn Dental Medicine Class of 2025 Teaching and Service Awards

### Joseph L. T. Appleton Award

Presented to a part-time faculty member for excellence in clinical teaching, this year's honoree is Keith Sharkan, a clinical associate in the division of restorative dentistry. Dr. Sharkan has been a part of the school's clinical faculty since 2017, teaching students general restorative care within the clinics. He enjoys challenging his students to expand their clinical knowledge and develop their patient communication skills, noting that teaching has added an enjoyable dimension to his dental career.



Keith Sharkan

The Appleton Award is named in honor of Joseph Appleton, a 1914 alumnus of Penn Dental Medicine, who served as dean of the school from 1941 to 1951. The award was founded in 1979 by Abram Cohen, a member of the Class of 1923 and father of dean emeritus D. Walter Cohen.

### Earle Bank Hoyt Award

Presented for excellence in teaching to a faculty member who is a Penn Dental Medicine graduate, the award was established by a grateful patient in honor of Dr. Hoyt, a distinguished clinician and educator and member of the Class of 1918. This year's recipient is Roopali Kulkarni, D'19, GR'19, GD'21, an assistant professor of oral medicine, who earned her DMD with a master of public health at Penn Dental Medicine and completed postdoc-

toral training in Oral Medicine here as well. Since joining the faculty in 2021, Dr. Kulkarni has served as the assistant director (2022-present) of Penn Dental Medicine's postgraduate oral medicine program and is on the medical staff (2021-present) in the division of oral medicine at Penn Medicine. She teaches both postdoctoral and predoctoral students clinically, and she lectures on a wide range of subjects relating to oral medicine and interdisciplinary care. Her scholarly work focuses on both oral medicine and public health. This is the second time Dr. Kulkarni was recognized with the award, having also received it in 2022.



Roopali Kulkarni

### Senior Outstanding Teaching Award

Presented to a faculty member who goes beyond the scope of their responsibilities to significantly impact the class's education at Penn Dental Medicine, this year's recipient is Artur Kofman, director of laboratory affairs and the office of laboratory affairs supervisor for the clinical labs at the school. This is the ninth year in a row that he has been recognized with this award. Mr. Kofman has been sharing his knowledge and expertise in dental lab work with students as a member of the school's staff for the past 24 years. Among his responsibilities, he coordinates students' lab work from the school to commercial laboratories and vice versa, guides dental students through lab-related

technical issues, and provides hands-on assistance as needed for minor adjustments to dental appliances at a chair-side setting. In addition, he operates the 3D printing lab for fabricating 3D models, occlusal guards, and surgical guides and is involved in the newly designed curriculum for CAD/CAM and printing of digital dentures for the dental students.



Artur Kofman

### Outstanding Service Award

Presented to a staff member who is highly regarded within the Penn Dental Medicine community for their extraordinary dedication, this award celebrates an individual who, in the estimation of the senior class, has consistently gone beyond their formal responsibilities to significantly enhance the overall experience of the senior class at Penn Dental Medicine. This year's recipient is Unique Coates, who is part of the instrument management services (IMS) team. Mr. Coates has worked in Penn Dental Medicine's IMS for three years.



Unique Coates



## Division of Public Safety University of Pennsylvania Police Department Crime Report

About the Crime Report: Below are the crimes against persons and/or crimes against property from the campus report for **June 2-8, 2025**. The crime reports are available at: <https://almanac.upenn.edu/sections/crimes>. Prior weeks' reports are also online. —Eds.

This summary is prepared by the Division of Public Safety (DPS) and contains all criminal incidents reported and made known to the Penn Police, including those reported to the Philadelphia Police Department (PPD) that occurred within our patrol zone, for the dates of **June 2-8, 2025**. The

Penn Police actively patrol from Market Street to Baltimore Avenue and from 30<sup>th</sup> Street to 43<sup>rd</sup> Street in conjunction with the Philadelphia Police.

In this effort to provide you with a thorough and accurate report on public safety concerns, we hope that your increased awareness will lessen the opportunity for crime. For any concerns or suggestions regarding this report, please call DPS at (215) 898-7297. You can view the daily crime log on the [DPS website](#).

### Penn Police Patrol Zone

*Market Street to Baltimore Avenue and from 30<sup>th</sup> Street to 43<sup>rd</sup> Street*

Crime Category	Date	Time	Location	Description
<i>Arson</i>	06/06/25	11:12 AM	3000 South St	Fire reported to Penn Police; fire marshall declared the fire to be arson; SWDD notified
<i>Assault</i>	06/03/25	6:14 AM	240 S 40th St	Complainant struck by unknown offender
	06/06/25	12:10 PM	3410 Civic Center Blvd	Domestic assault
<i>Auto Theft</i>	06/04/25	7:14 PM	255 S 38th St	Theft of a secured electric scooter from bike racks
<i>Bike Theft</i>	06/03/25	12:11 AM	3417 Spruce St	Theft of a secured bicycle from bike racks
<i>Other Offense</i>	06/02/25	4:35 PM	4300 Locust St	Pedestrian stop/warrant arrest
	06/05/25	1:59 AM	200 S 42nd St	Suspicious activity/warrant arrest
<i>Retail Theft</i>	06/03/25	12:43 AM	3604 Chestnut St	Retail theft of consumable goods
	06/03/25	7:41 AM	3604 Chestnut St	Retail theft of consumable goods
	06/04/25	12:57 PM	3604 Chestnut St	Retail theft of consumable goods
	06/05/25	1:22 AM	3330 Market St	Retail theft of consumable goods
	06/05/25	6:33 AM	3330 Market St	Retail theft of consumable goods
	06/05/25	7:12 PM	3604 Chestnut St	Retail theft of consumable goods
	06/08/25	5:30 PM	4233 Chestnut St	Retail theft of alcohol
	06/08/25	5:51 PM	4233 Chestnut St	Retail theft of alcohol
<i>Robbery</i>	06/04/25	1:20 AM	3600 Sansom St	Strong-arm robbery of a phone/Arrest
	06/08/25	9:22 PM	4000 Baltimore Ave	Complainant was robbed by a group of juveniles who fled the area
<i>Theft from Building</i>	06/02/25	8:48 AM	3901 Locust Walk	Contracted employee took supplies from caged storage area
	06/02/25	12:44 PM	3600 Chestnut St	Theft of a package containing clothing from lobby area
	06/02/25	1:30 PM	3501 Sansom St	Computer monitor taken from conference room
	06/02/25	1:58 PM	4239 Baltimore Ave	Theft of a wallet from café
	06/03/25	11:04 AM	329 S 42nd St	Theft of a bicycle from common area in basement
	06/05/25	9:18 PM	3680 Walnut St	Theft of a laptop from backpack in common area
<i>Theft from Vehicle</i>	06/03/25	2:17 PM	200 S 37th St	Theft of a backpack from vehicle parked on highway
<i>Theft Other</i>	06/03/25	6:00 PM	4101 Pine St	Theft of a package
	06/05/25	5:32 PM	4054 Irving St	Theft of a package containing a rug from apartment building
	06/06/25	2:39 PM	51 N 39th St	Theft of a credit card from wallet from patient's room
<i>Vandalism</i>	06/03/25	4:56 AM	3130 Walnut St	Offender threw a rock at the complainant's car, causing damage to the rear passenger door
	06/07/25	11:15 PM	4200 Sansom St	Multiple DPS emergency phones vandalized

### Philadelphia Police 18th District

*Schuylkill River to 49<sup>th</sup> Street & Market Street to Woodland Avenue*

Below are the crimes against persons from the 18<sup>th</sup> District: 7 incidents were reported for **June 2-8, 2025** by the 18<sup>th</sup> District, covering the Schuylkill River to 49<sup>th</sup> Street & Market Street to Woodland Avenue.

Crime Category	Date	Time	Location
<i>Assault</i>	06/03/25	6:14 PM	4806 Market St
	06/06/25	6:14 AM	240 S 40th St
	06/06/25	12:14 PM	3400 Blk Civic Center Blvd
	06/06/25	4:18 PM	4510 Linmore Ave
	06/07/25	12:09 PM	4813 Chester Ave
<i>Robbery/Arrest</i>	06/04/25	1:52 AM	3600 Blk Sansom St
<i>Robbery</i>	06/08/25	9:46 PM	S 40th St & Baltimore Ave

The Division of Public Safety offers resources and support to the Penn community. DPS has developed a few helpful risk reduction strategies outlined below. Know that it is *never* the fault of the person impacted (victim/survivor) by crime.

- See something concerning? Connect with Penn Public Safety 24/7 at (215) 573-3333.
- Worried about a friend's or colleague's mental or physical health? Get 24/7 connection to appropriate resources at (215) 898-HELP (4357).
- Seeking support after experiencing a crime? Call Special Services (support and advocacy resources) at (215) 898-4481 or email an advocate at [specialservices@publicsafety.upenn.edu](mailto:specialservices@publicsafety.upenn.edu).
- Use the [Walking Escort](#) and [Riding](#) services available to you free of charge.
- Take a moment to update your cell phone information for the [UPennAlert Emergency Notification System](#).
- Download the [Penn Guardian App](#), which can help police better find your location when you call in an emergency.
- Access free [self-empowerment and defense courses](#) through Penn DPS.
- Stay alert and reduce distractions. (Using cell phones, ear buds, etc. may limit your awareness.)
- Orient yourself to your surroundings. (Identify your location, nearby exits, etc.)
- Keep your valuables out of sight and only carry necessary documents.

# Update

Summer AT PENN

## CHILDREN'S ACTIVITIES

**6/18** *June Storytime*; reading of *Before the Seed: How Pollen Moves* by Susannah Buhrman-Deever; 10:30 a.m.; Outdoor Classroom, Morris Arboretum & Gardens; free with arboretum admission (Morris Arboretum & Gardens).

## FITNESS & LEARNING

**6/18** *What is Information Literacy?*; workshop that will focus on finding and selecting appropriate sources through the Penn Libraries web portal; 4 p.m.; Zoom webinar; register: <https://tinyurl.com/curf-workshop-june-18> (Center for Undergraduate Research & Fellowships).

**6/23** *Ombuds Café: How to Prepare for a Difficult Conversation: What's in Store for You*; virtual café that will explore the steps to mentally preparing for a difficult conversation; noon; Zoom webinar; register: <https://tinyurl.com/ombuds-cafe-june-23> (Office of the Ombuds).

## College of Liberal & Professional Studies

Online webinars. Info and to register: <https://www.lps.upenn.edu/about/events>.

**6/20** *Global Master of Public Administration Virtual Information Session*; 9 a.m.

## Graduate School of Education

Online webinars. Info and to register: <https://www.gse.upenn.edu/news-and-events/events-calendar>.

**6/20** *Health Professions Education Certificate Program: Virtual Information Session*; noon.

## TALKS

**6/18** *Decoding the Moment: Health Impacts of the "One Big Beautiful Bill"*; Eric Roberts, medicine; Aditi Vasan, Children's Hospital of Philadelphia; Rachel M. Werner, Leonard Davis Institute; Dan Gorenstein, *Tradeoffs*; noon; Zoom webinar; register: <https://tinyurl.com/ldi-talk-june-18> (Leonard Davis Institute).

*Fibrodysplasia Ossificans Progressiva (FOP)*; Corrie Crowe, Thomas Jefferson University Hospital, Cooper Hospital, and Virtua Voorhees; 5:30 p.m.; online webinar; register: <https://tinyurl.com/crowe-talk-june-18> (Penn Dental Medicine).

**6/24** *Using Data to Deliver Water Affordability: How Cities Are Automatically Enrolling Eligible Residents*; panel of speakers; 3 p.m.; Zoom webinar; register: <https://tinyurl.com/water-center-talk-june-24> (Water Center at Penn).

## Medical Ethics & Health Policy

Various locations. Info and to register: <https://medicalethicshealthpolicy.med.upenn.edu/events>.

**6/17** *Who Publishes in Bioethics, Globally? A Bibliometric Analysis of Two Decades of Authorship in Bioethics (2000-2025)*; panel of speakers; noon; room 1402, Blockley Hall, and Zoom webinar.

**6/24** *Constructs of Race and Ethnicity in Medical Care and Research*; Barbara Chaiyachati, Children's Hospital of Philadelphia; noon; room 1402, Blockley Hall, and Zoom webinar.

## 2025-2026 University Catalog

The Office of the University Registrar has announced the release of the [2025-2026 University Catalog](#) of the University of Pennsylvania. This edition of the University Catalog includes all degree granting programs, many certificates offered across the University, and courses at all levels associated with these programs. The catalog also includes the Pennbook, the Faculty Handbook, and many academic policies and resources.

Many thanks to everyone who contributed to the work of compiling and publishing this latest catalog. Thank you!

The University Catalog can be found at <https://catalog.upenn.edu>.

Please send all questions and comments to [catalog@registrar.upenn.edu](mailto:catalog@registrar.upenn.edu).

—Margaret Kip, University Registrar

## OF RECORD

### Update to the Patent and Tangible Research Property Policies and Procedures

The Patent and Tangible Research Property Policies and Procedures of the University of Pennsylvania have been revised to update Section 5 of Appendix A: Participation Agreement. The full updated policy can be found in the [Faculty Handbook Section III.E](#).

—John L. Jackson, Jr., Provost  
—Dawn Bonnell, Senior Vice Provost for Research

## Recognized Holidays for Fiscal Year 2026

The following holidays will be observed by the University in the upcoming fiscal year (July 1, 2025 through June 30, 2026) on the dates listed below:

*Independence Day*, Friday, July 4, 2025  
*Labor Day*, Monday, September 1, 2025  
*Thanksgiving*, Thursday and Friday, November 27 & 28, 2025  
*Christmas Day*, Thursday, December 25, 2025  
*New Year's Day*, Thursday, January 1, 2026  
*Martin Luther King, Jr. Day*, Monday, January 19, 2026  
*Memorial Day*, Monday, May 25, 2026  
*Juneteenth*, Friday, June 19, 2026

Each year, the President, Provost, and Senior Executive Vice President assess the feasibility of observing Penn's traditional Special Winter Vacation. Thus, the Special Winter Vacation granted to faculty and staff will be on December 26, 29, 30, and 31, 2025. If an employee is required to work to continue departmental operations for part or all of this period, the Special Winter Vacation can be rescheduled for some other time.

Staff members who are absent from work either the workday before a holiday, the workday after a holiday, or both days, will receive holiday pay if that absence is charged to pre-approved paid time off or to sick time substantiated by a written note from the staff member's healthcare provider.

Vacations and holidays for hospital employees or those staff members in collective bargaining units are governed by the terms of hospital policies or their respective collective bargaining agreements.

—Division of Human Resources

	Fiscal Year 2026	Fiscal Year 2027	Fiscal Year 2028
<b>Independence Day</b>	Fri., 7/4/25	Fri., 7/3/26	Mon., 7/5/27
<b>Labor Day</b>	Mon. 9/1/25	Mon., 9/7/26	Mon., 9/6/27
<b>Thanksgiving</b>	Thurs., & Fri., 11/27 & 11/28/25	Thurs., & Fri., 11/26 & 11/27/26	Thurs., & Fri., 11/25 & 11/26/27
<b>Christmas Day</b>	Thurs., 12/25/25	Fri., 12/25/26	Fri., 12/24/27
<b>New Year's Day</b>	Thurs., 1/1/26	Fri., 1/1/27	Fri., 12/31/27
<b>Dr. Martin Luther King Jr. Day</b>	Mon., 1/19/26	Mon., 1/18/27	Mon., 1/17/28
<b>Memorial Day</b>	Mon., 5/25/26	Mon., 5/31/27	Mon., 5/29/28
<b>Juneteenth</b>	Fri., 6/19/26	Fri., 6/18/27	Tues., 6/19/28

## Almanac

3910 Chestnut Street, 2nd floor  
Philadelphia, PA 19104-3111  
Phone: (215) 898-5274 or 5275  
Email: [almanac@upenn.edu](mailto:almanac@upenn.edu)  
URL: [www.upenn.edu/almanac](http://www.upenn.edu/almanac)

The University of Pennsylvania's journal of record, opinion and news is published Tuesdays during the academic year, and as needed during summer and holiday breaks. Its electronic editions on the Internet (accessible through the Penn website) include HTML, Acrobat and mobile versions of the print edition, and interim information may be posted in electronic-only form. Guidelines for readers and contributors are available on request and online.

EDITOR  
ASSOCIATE EDITOR  
ASSISTANT EDITOR  
EDITORIAL ASSISTANT  
STUDENT ASSISTANT

Alisha George  
Jackson Betz

ALMANAC ADVISORY BOARD: For the Faculty Senate: Sunday Akintoye, Christine Bradway, Daniel Cohen, Al Filreis, Cary Mazer, Martin Pring. For the Staff Assemblies: Jon Shaw, PPSA; Marcia Dotson, WPPSA; Rachelle R. Nelson, Librarians Assembly.

The University of Pennsylvania seeks talented students, faculty and staff from a wide variety of backgrounds, experiences, and perspectives. The University of Pennsylvania does not discriminate on the basis of race, color, sex, sexual orientation, religion, creed, national origin (including shared ancestry or ethnic characteristics), citizenship status, age, disability, veteran status or any other legally protected class status in the administration of its admissions, financial aid, educational or athletic programs, or other University-administered programs or in its employment practices. Questions or complaints regarding this policy should be directed to the executive director of the Office of Equal Opportunity Programs, 421 Franklin Building, 3451 Walnut Street, Philadelphia, PA 19104-6205; or (215) 898-6993.



## The State of University City 2025 Report from the University City District

**Spotlight on University City:** A regional leader in science and innovation. Renowned universities and hospitals. Millions of square feet of real estate development planned. Some of the best transportation options in the region. University City is a 2.4 square mile neighborhood home to over 50,000 residents and 85,000 jobs in fields including medicine, higher education, technology, real estate, and hospitality. University City is a destination for culture seekers and food lovers, a transportation hub with some of the most bicycle- and pedestrian-friendly streets in the city, an employment epicenter for the region, and home to some of the most significant development projects and life science breakthroughs in the region. With diverse demographics, a rich blend of housing and rental options, top-notch schools and hospitals, and amenities galore, University City is one of Greater Philadelphia's neighborhoods of choice and is poised to meet current and future challenges.

**Real Estate Development:** In a time of continued flux for real estate development across the country due to high interest rates, increased construction and land costs, a lack of debt capital, and general economic uncertainties, University City continues to weather the challenges. The neighborhood is on pace to reach a projected 2.7 million square feet of new development valued at \$1.07 billion by the end of 2025. Progress on major residential, institutional, public space, and mixed-use projects marked another busy year of topping outs and ribbon cuttings in the neighborhood. In the past year, progress continued on three major long-term projects: uCity Square, Schuylkill Yards, and Amtrak's 30th Street Master Plan. Other key developments, including the continued expansion of Children's Hospital of Philadelphia's University City campus, two major housing projects in Mill Creek Station and Westpark that will significantly increase the housing inventory, and University City District's bold vision for the Schuylkill River with the West Philly Waterfront, point toward University City's continued growth.

**Employment:** As cities continue to adjust to workplaces in a post-COVID environment, employment in University City remained on the upswing in 2024 due to new development, institutional expansions, the concentration of distribution-resistant industries, and the attraction of new companies. In 2024, over 17,000 new jobs were posted for roles within the neighborhood, and over 75% of University City's 85,000 jobs pay over \$40,000 per year. University City accounts for over 12% of all jobs within Philadelphia, despite representing only 1.69% of the city's total footprint. The local economy is dominated by positions at local hospitals and universities, but its growing innovation sector has added more positions in biotech, nascent technologies, and commercialization of research each year as more labs, offices, and commercial spaces are added to the inventory or reimaged for the new employment landscape.

**Offices:** University City is home to approximately 3.1 million square feet of office space and 2.4 million square feet of lab space, with 900,000 square feet of additional lab space currently under construction at major development projects throughout the neighborhood. The neighborhood's status as a leading national life sciences and technology sector remained strong through the end of 2024, with University City ranking as the top U.S. submarket for net absorption growth (3.6%) between Q2 2023 and Q2 2024 by CBRE. University City also experienced the third-highest increase in asking rent among all national tech submarkets during that same period, trailing only BWI in Baltimore and CBD in Nashville. Although the definition of a modern office remains in flux, University City's access to nearby amenities, proximity to multiple transportation options, including William H. Gray III 30th Street Station, and connection to the major anchor institutions will continue to be a significant selling point for companies seeking to do business in a premier employment and innovation hub.

**Higher Education:** University City is renowned for its exceptional colleges and universities. Whether they come from around the block, country, or world, in 2024 over 54,000 undergraduate, graduate, and postgraduate students were enrolled in programs at five institutions of higher learning: the University of Pennsylvania, Drexel University, the Community College of Philadelphia West Campus, the Restaurant School at Walnut Hill College, and Saint Joseph's University City campus. Both the University of Pennsylvania and Drexel University fared well in recent *U.S. News & World Report* rankings, with Penn ranked the 10<sup>th</sup> best national university, 17<sup>th</sup> for best value, and as the top business school in the nation while Drexel excelled in similar lists for most innovative schools (#29) and best undergraduate engineer programs (#54) and finished #2 for its co-ops/internships. Students at University City's major local institutions of higher learning continue to be drawn to the neighborhood's global dining scene, beautiful campuses, and prime location within the city and on the eastern seaboard. Both Drexel and Penn have recently announced new presidents who are poised to lead the universities in the coming years.

**Healthcare:** The four hospitals located within University City—Chil-

dren's Hospital of Pennsylvania (CHOP), Hospital of the University of Pennsylvania (HUP), Penn Presbyterian Medical Center, and Philadelphia Veterans Affairs Medical Center—serve as a vital part of University City's economy, employing a combined total of over 36,000 doctors, nurses, techs, and other hospital positions. Penn Medicine and CHOP perform well annually in annual rankings: Hospitals of the University of Pennsylvania-Penn Presbyterian landed on the *U.S. News & World Report* Best Hospitals Honor Roll for national hospitals and was ranked as the 15<sup>th</sup> best hospital in the nation by *Newsweek*, while CHOP also placed on the 2024-2025 Best Children's Hospitals Honor Roll from *U.S. News & World Report* and was ranked as the top-ranked department of pediatrics in the country for an 11<sup>th</sup> straight year. Local hospitals also lead the way in new treatments, procedures, and medical technologies, and with the forthcoming arrival of the Children's Hospital New Patient Tower and Schuylkill Avenue Research Building, there is more on the horizon.

**Transportation:** The streets, sidewalks, and public transit infrastructure in University City combine to offer excellent options for traveling within or beyond the neighborhood, with 55% of residents walking, biking, or taking public transit to get to work. University City boasts scores of 90 for walking, 95 for public transportation, and 92 for biking from walkscore.com, all three of which earn it "paradise" status. Certain transportation metrics are nearly fully recovered from the dips caused by COVID-19 lockdowns and restrictions, with pedestrian volume close to 100% of its 2019 figure, usage of the Indego bikeshare network up 160% and accounting for 21.5% of total citywide volume, and Amtrak ridership at 30th Street Station surging to over 5,000,000 annual riders for the first time since 2010. Streetscape improvements including pedestrian islands along Chestnut Street to calm traffic, alterations to 47<sup>th</sup> Street including new bike lanes, and forthcoming ADA accessible stations, featuring a new fleet of trolleys as part of SEPTA's Trolley Modernization project, will continue University City's standing as one of the region's top neighborhoods for getting around.

**People:** The neighborhood of over 53,000 residents is comprised of a mix of families, young professionals, and longtime residents who have called University City home for decades. The population also consists of a confluence of undergraduate and graduate students studying at nearby universities, and therefore skews young, educated, and ethnically diverse. The often-transient scholars in the neighborhood contribute to 19% of the population having lived outside of Pennsylvania in the previous year, including 6% moving from outside the country. University City's diversity in population leads to diversity in cultural influences and options for dining, shopping, and art to create a rich and distinct neighborhood tapestry. In 2024, 1,109 new units of multi-family housing were added to University City's inventory, and nearly 1,200 additional units are planned to be added by 2027 to push its total inventory close to 10,000.

**Life in the Neighborhood:** As a place to live, University City offers something for everyone. Over 100 acres of public space and parks provide escape from the city streets and places for people to relax, recharge, and spread out. An eclectic dining scene features a blend of longstanding mom-and-pop restaurants, cuisine from around the globe, and outposts of local and national chains. Housing options are as varied as the residents, with historic homes, walk-up apartments, stylish high-rises, dormitories, and a wealth of new housing options in the pipeline. University City boasts a robust arts and culture scene, including theaters, art galleries, and local dance and performance groups, plus plenty of signature community events. Active neighborhood associations and community groups inject unique character and civic pride into smaller sub-neighborhoods and serve as valuable resources for the community to create an interconnected mosaic of neighborhoods with their own unique character.

**Innovation:** The 2.4 square mile neighborhood is a bustling center for innovation and is nationally recognized for advances in science, research, and medicine. Cutting-edge discoveries, treatments, and new technology originate out of 3.3 million square feet of life science lab space in research hubs including the University City Science Center, uCity Square, Pennovation, Schuylkill Yards, and Drexel. The neighborhood's collection of labs, benches, and clinics contributes to Philadelphia ranking in fourth place of the country's top life science hubs in a 2025 analysis by Colliers. Discoveries initiated in University City spark billions of dollars in economic growth and attract international attention and awards in fields like biotech, robotics, and medicine, including the 2023 Nobel Prize in Physiology or Medicine awarded to Penn researchers Katalin Karikó and Drew Weissman. In 2024, 200 patents were issued to University City businesses and institutions, who also accounted for \$968 million in NIH funding, good for 43.9% of all NIH funding awarded to Pennsylvania companies.

For the full report, visit <https://issuu.com/universitycity/docs/the-state-of-university-city-2025>.

—University City District