

UNIVERSITY OF PENNSYLVANIA *Almanac*

Tuesday
June 16, 2026
Volume 72 Number 37
www.upenn.edu/almanac

From the President

A Message to the Penn Community

June 12, 2026

Dear Members of the Penn Community,

I will conclude my service as President of the University of Pennsylvania as planned on June 30, 2027, at the close of the upcoming academic year.

When I accepted the honor of leading Penn, my goal was to help restore stability during unanticipated leadership transitions, refocus our community on Penn's mission, and strengthen Penn for the future during a challenging time for higher education. With your partnership, resilience, and dedication, we have accomplished these objectives and much more. Penn has tremendous momentum and is exceptionally well positioned for the future. Although I greatly enjoy serving as President, now is the right time for Penn to begin its next chapter under new leadership. Ramanan Raghavendran, chair of the Board of Trustees, will share additional information about the search process in a separate communication.

When I stepped into the presidential role, I had been at Penn for more than 12 years, serv-

2026 School of Social Policy & Practice Awards

Penn's School of Social Policy & Practice (SP2) has announced its 2026 award winners. SP2 Award recipients were recognized for their outstanding achievements by Dean Sara S. Bachman at the school's 2026 Commencement ceremony on Saturday, May 16, 2026, at the Palestra.

The Excellence in Teaching Award

The Excellence in Teaching Award is presented to members of the standing and non-standing faculty in recognition of excellence in teaching and mentoring.

Full-Time Faculty:

Allison Werner-Lin is an associate professor in the School of Social Policy and Practice. Her research addresses the intersection of genomic discovery and family life. Her work is among the first to explore the psychosocial challenges unique to women and men of reproductive age who carry a genetic mutation that confers elevated risk of cancer. Dr. Werner-Lin has served as an investigator on multiple interdisciplinary, NIH-funded grants examining dissemination and implementation of emerging genomic technologies in reproductive, pediatric, adolescent, and emerging adult contexts. Presently, Dr. Werner-Lin is an investigator on a Beau Biden Cancer Moonshot Grant



Allison Werner-Lin

ing as Executive Vice President and Dean under three presidents: Amy Gutmann, Wendell Pritchett, and Liz Magill. While that provided me with a broad view of Penn's scope, there is no substitute for being in this role; serving as President allowed me to learn each day from the people, ideas, and achievements that define this University and its extraordinary breadth. In many respects, I felt kinship with our first-year students who encounter and embrace all that Penn has to offer. While my career has been in academic medicine, it has been illuminating to reacquire myself with other fields, from poetry to political science, from finance to fine arts.

Penn's strength has always been—and always will be—our faculty, students, staff, alumni, and supporters. Spending time with so many of you has been a joy and an honor. When I met with Penn Rhodes Scholar Om Gandhi, I asked him why he pursued a new engineering project focused on CAR-T cells when his project on pe-

(continued on page 2)

with the Hospital of the University of Pennsylvania, where she is examining barriers to cascade genetic testing in families of pediatric cancer survivors. For over a decade, Dr. Werner-Lin served as an advisor to the National Cancer Institute, where she oversaw a program of psychosocial research addressing hereditary tumor predisposition syndromes, including Li-Fraumeni syndrome and inherited bone marrow failure syndromes. She is a member of the scientific committee governing the International Meeting on Psychosocial Aspects of Hereditary Cancer, and in 2019 she was a visiting scholar at the Hastings Center for Bioethics. In 2021 she served as the director of research at the Association of Oncology Social Work.

Kim McKay is a senior lecturer who teaches in both the MSW and MSSP programs of SP2. They have more than 25 years of social work experience, including case management, administration, supervision, policy, and clinical work. They have taught undergraduate and graduate students in social work programs for 15 years. Dr. McKay has taught many courses throughout the social work curriculum, with a particular focus on the integration of gender and sexuality. At SP2, Dr. McKay currently teaches reproductive justice policy and policy analysis in the



Kim McKay

(continued on page 3)

A Message from the Chair of the University of Pennsylvania Board of Trustees

June 12, 2026

Dear Members of the Penn Community,

President Jameson has communicated that, as planned, he will conclude his service as Penn's tenth president in June 2027. The Board respects his decision. This fall, we will begin the comprehensive process laid out in Penn's Statutes to identify the University's next President, who will take office on July 1, 2027.

Dr. Jameson stepped in at a pivotal moment, and what he has accomplished in two and a half years has been simply extraordinary. His work is far from finished. The next twelve months include further accelerating Penn Forward and its nine initiatives designed to build greater trust with those we serve, accelerate bold discoveries, and extend Penn's geographic reach and impact. I know the Board and the Penn community are fully committed to sup-

(continued on page 2)

Dovie Watson & Katherine Dalke: Leadership Roles in Penn Medicine's Program for LGBTQ+ Health



Dovie Watson



Katharine Dalke

Dovie Watson and Katharine Dalke will assume new leadership roles with the Penn Medicine Program for LGBTQ+ Health in July. Dr. Watson, an infectious disease physician and researcher who specializes in HIV prevention and health equity in the LGBTQ+ population, will serve as director of research and evaluation. Dr. Dalke, a psychiatrist with a focus on LGBTQ+ health equity who is engaged in health policy work at the state and national levels, will serve as the director of strategy and alignment.

The new roles complement the continuing

(continued on page 3)

INSIDE

- Trustees June Meeting Coverage; Recognized Holidays for Fiscal Year 2027
- 2027 University Catalog Now Available
- Deaths; New AI Lab Opens at New Bolton Center
- State of University City 2026 Report
- Honors & Other Things
- Weekly Crime Reports
- Update: Summer AT PENN
- CCTV Camera University of Pennsylvania Locations

Supplement: 2026 Faculty Senate Supplement

June Trustees Meeting Coverage

A stated meeting of the Penn Board of Trustees took place Friday, June 12, 2026.

After Trustees Board Chair Ramanan Raghavendran called the meeting to order, Charles Howard, University Chaplain and Vice President for Social Equity & Community, gave the invocation.

Mr. Raghavendran presented six resolutions, each of which was approved:

- To revise the procedures for proxy voting;
- To amend and restate the conflict-of-interest policy of the Trustees;
- To revise the committee structure and charters of the Trustees;
- To clarify which committees will have faculty and student liaisons;
- To amend the statutes of the Trustees; and
- To designate M. Elizabeth Magill as President Emerita.

President J. Larry Jameson reported that during academic year 2025-2026, Penn made significant progress on its strategic priorities. He thanked those who had made Penn's Commencement activities and Alumni Weekend so successful. He also noted Drs. Albert Maguire, Jean Bennett, and Katherine High were awarded the 2026 Breakthrough Prize ([Almanac April 28, 2026](#)). President Jameson presented a resolution of appreciation for Gregory J. Pellicano, upon his retirement as vice president for audit, compliance, and privacy, and another to appoint Timothy Susanin to that role. Both resolutions were approved.

During the academic report, Provost John L. Jackson, Jr., highlighted the strategic plans and initiatives of Timothy Rommen, vice provost for the arts, and Sanya Carley, vice provost for climate science, policy, and action. Provost Jackson then presented a resolution on faculty appointments and promotions, which was approved.

Executive Vice President Mark F. Dingfield gave the financial report. For the fiscal year ending June 30, 2026, the total net assets for the consolidated University are forecasted to increase by \$2.8 billion to \$36.7 billion (\$25.8 billion for the academic component and \$10.9 billion for the health system). An increase in net assets from operations of \$591 million is projected for the consolidated University. Cash is projected to increase \$294 million to \$3.3 billion for the consolidated University (\$2.0 billion for the academic component and \$1.3 billion for the health system).

Jonathan A. Epstein, Executive Vice President of the University of Pennsylvania for the Health System and Dean of the Perelman School of Medicine, announced the extension of the appointment of Kevin Mahoney as UPHS CEO through June 2031. Vice Provost and Dean of Admissions E. Whitney Soule reported on the incoming class of 2030. Committee chairs then provided reports regarding meetings held on Thursday, June 11, 2026.

The Budget & Finance committee presented 12 resolutions, which were approved. The Governance Committee presented three resolutions—to elect the executive committee, to elect the investment board, and to re-elect Trustee Harlan Stone—each of which was approved.

Mr. Raghavendran presented resolutions of appointments to the Penn Medicine and other boards, which were approved.

The next Board of Trustees meetings are scheduled to take place on Thursday, September 24.

Recognized University Holidays for Fiscal Year 2027

The following holidays will be observed by the University in the upcoming fiscal year (July 1, 2026, through June 30, 2027) on the dates listed below:

Independence Day, Friday, July 3, 2026
Labor Day, Monday, September 7, 2026
Thanksgiving, Thursday and Friday, November 26 & 27, 2026
Christmas Day, Friday, December 25, 2026
New Year's Day, Friday, January 1, 2027
Martin Luther King, Jr. Day, Monday, January 18, 2027
Memorial Day, Monday, May 31, 2027
Juneteenth, Friday, June 18, 2027

Each year, the President, Provost, and Executive Vice President assess the feasibility of observing Penn's traditional Special Winter Vacation. Thus, the Special Winter Vacation granted to faculty and staff will be on December 28 through December 31, 2026. If an employee is required to work to continue departmental operations for part or all of this period, the Special Winter Vacation can be rescheduled for some other time.

Staff members who are absent from work either the workday before a holiday, the workday after a holiday, or both days will receive holiday pay if that absence is charged to pre-approved paid time off or to sick time substantiated by a written note from the staff member's healthcare provider.

Vacations and holidays for hospital employees or those staff members in collective bargaining units are governed by the terms of hospital policies or their respective collective bargaining agreements.

—Division of Human Resources

	Fiscal Year 2027	Fiscal Year 2028	Fiscal Year 2029
Independence Day	Fri., 7/3/2026	Mon., 7/5/2027	Tues., 7/4/2028
Labor Day	Mon., 9/7/2026	Mon., 9/6/2027	Mon., 9/4/2028
Thanksgiving	Thurs. & Fri., 11/26 & 11/27/2026	Thurs. & Fri., 11/25 & 11/26/2027	Thurs. & Fri., 11/23 & 11/24/2028
Christmas Day	Fri., 12/25/2026	Fri., 12/24/2027	Mon., 12/25/2028
New Year's Day	Fri., 1/1/2027	Fri., 12/31/2027	Mon., 1/1/2029
Dr. Martin Luther King, Jr. Day	Mon., 1/18/2027	Mon., 1/17/2028	Mon., 1/15/2029
Memorial Day	Mon., 5/31/2027	Mon., 5/29/2028	Mon., 5/28/2029
Juneteenth	Fri., 6/18/2027	Mon., 6/19/2028	Tues., 6/19/2029

From the President

A Message to the Penn Community

(continued from page 1)

diatric brain cancer was making great progress. His answer: "I'm working on both!" That is Penn student ambition. Religion professor Justin McDaniel took his class on existential despair to Woodland Cemetery late one evening to read together the concluding chapter of Christopher Isherwood's *A Single Man*. That is experiential learning and will be remembered when these students reflect on their time at Penn. Dr. Jean Bennett believed it might be possible to correct blindness caused by gene defects. This first FDA-approved gene therapy is now a reality for children who had previously never seen their mother's face. These anecdotes, among countless others, define Penn for me.

I have come to appreciate that Penn's greatness comes from a culture that encourages people to challenge assumptions, cross boundaries, and pursue knowledge in service to others. In our laboratories, classrooms, and Philadelphia neighborhoods, I have witnessed Penn people fulfill Benjamin Franklin's vision—using knowledge for the greater good. You have inspired my thinking and leadership and shaped my understanding of what makes this institution so exceptional.

Together, we have built upon a foundation of academic excellence. We have made education more accessible and affordable, witnessed multiple medical breakthroughs, championed recognition of faculty and students, and strengthened a culture of inclusion, collaboration, respect, and thoughtful debate.

The momentum we have built will continue.

We have important goals to achieve together in the coming year. Penn Forward has launched an ambitious set of actionable initiatives that will further enhance access, catalyze discovery, and extend our reach, nationally and globally, positioning Penn to lead in a rapidly changing world for years to come. I look forward to continuing that work with you while partnering with the Board of Trustees to ensure a seamless leadership transition.

As I said when I began this role, "Like you, I love Penn." That will never change. I am confident in the University's trajectory and grateful for the opportunity to continue serving this remarkable community over the coming year. Thanks to all of you, Penn's future is extraordinarily bright.

—J. Larry Jameson, President

A Message from the Chair of the University of Pennsylvania Board of Trustees

June 12, 2026

(continued from page 1)

porting him in advancing these critical initiatives.

We will share additional information about the search process in the months ahead. In the meantime, please join me in thanking Dr. Jameson and in supporting him through this important year.

—Ramanan Raghavendran
 Chair, Board of Trustees

2026 School of Social Policy & Practice Awards

(continued from page 1)

MSSP program and human behavior in the social environment and LGBTQ+ social policy in the MSW program. Dr. McKay loves teaching and working with students and has been recognized with multiple teaching awards. They direct the certificate in LGBTQ+ policy & practice and deeply appreciate their time spent with students working towards this graduate certificate.

Part-Time Lecturers:

Meredith Myers is a senior fellow in the Wharton School's Center for Leadership and Change Management. She has been on Penn's faculty since 2009, teaching in the Wharton School, the School of Social Policy & Practice (SP2), and the Positive Psychology Center. She has received teaching awards from both the Wharton School and SP2's Master of Science in Nonprofit Leadership program. For a decade, Dr. Myers served as the executive director of Job Crafting LLC, an organization dedicated to helping individuals and organizations cultivate greater purpose and engagement in their work. Through her research and consulting, Dr. Myers coaches international leaders, executives, and board members across corporations, nonprofits, governments, and mission-critical teams. Her work focuses on empowering leadership, the science of human thriving, collaboration in high-stakes contexts, and training the trainer to scale change.



Meredith Myers

Reggie Jones has been at SP2 as a part-time lecturer for over a decade. She uses a feminist anti-oppression social work lens to bring critical awareness, engagement, and analysis of the field of social work practice into the classroom. Empowering future social workers to interrogate what they know and to cultivate curiosity that helps them reclaim subjugated knowledge and alternative narratives/histories are foundational to her teaching pedagogy. For over 15 years, Ms. Jones was the director of counseling services at Bryn Mawr College; she later became the inaugural associate dean for health & wellness at Bryn Mawr College, where she led the college's psychological and medical services. Ms. Jones retired from her role as associate dean at Bryn Mawr in 2023 to focus on her private practice and consultancy work. Ms. Jones provides individual and group psychotherapy, as well as clinical supervision, and her clinical work is grounded in liberation, group process, community healing, and experiential learning. Ms. Jones also consults with organizations to develop and facilitate trainings that support the creation of more affirming and healing-centered spaces. Ms. Jones is also a faculty member at Bryn Mawr College's Gradu-



Reggie Jones

ate School of Social Work and Social Research and at Bryn Mawr College-Nonprofit Executive Leadership Institute (NELI).

Hal Levin Award

This award is presented to a meritorious student in the Doctor of Philosophy in Social Welfare Program who is continuing the process of completing coursework. The awardee is Tony Shaw.

Dr. Ram Cnaan Award

This award is presented to a meritorious student in the Doctorate in Clinical Social Work program who has completed the third year of course work. The awardee is Jen Panhorst.

Wilson-Spigner Award for Social Policy Excellence

This award is presented to a graduating student in the master of science in social policy program who has a demonstrated record of intellectual inquiry and academic excellence and who is committed to using research to analyze and shape social policy locally, nationally, and/or globally. The award is named in honor of the Reverend Dr. Welford Robinson Wilson II, and his daughter, Carol Wilson Spigner, the first faculty director of the MSSP program, who have increased equity and equality among underrepresented groups through research-based change in policy and organizations. The awardee is Jaelyn Liu.

Excellence in Social Impact Award

This award is presented to a meritorious graduating student in the Nonprofit Leadership Program who has a record of academic excellence and has shown promise in using their talents and knowledge to create positive social impact. The awardee is Krista Smith.

Richard J. Estes Global Citizenship Award

This award is presented to a graduating international student in the Nonprofit Leadership Program who embodies a commitment to social impact, has a record of academic excellence, and is committed to using their talents and knowledge to make a difference in the world. The awardee is Sina Barzegar.

Rosa Wessel Award

This award is presented to a meritorious graduating student in the master of social work program who is selected on the basis of academic performance and one or more of the following: exemplary student leadership, innovative activities in the field practicum, and exceptional community service. The awardee is Jeanne Chang.

Dr. Ruth Smalley Award in International Social Welfare

This award is presented to a member of the master of social work graduating class who, through their writing, participation in class discussions, and experience, has demonstrated an interest in, and a working knowledge of, the international and cultural dimensions of social work practice, and the application of practice to research. The awardee is Elizabeth McGuinn.

Student of Excellence

The award is given to a graduating SP2 student who has had a positive impact on the SP2 community through their collegiality, service, and community engagement inside and outside of the classroom. The awardee is Jeanne Chang.

Dovie Watson & Katherine Dalke: Leadership Roles in Penn Medicine's Program for LGBTQ+ Health

(continued from page 1)

work of Kevin Kline, who started as the program's inaugural medical director in 2023 ([ALMANAC September 5, 2023](#)).

Since the Program for LGBTQ+ Health launched in 2013, it has evolved from a faculty-driven passion project into a system-wide initiative that meets the sometimes-unseen needs of LGBTQ+ patients. The program offers navigation services and access to physicians across a wide range of specialties, from primary care to behavioral health to dermatology, who are trained in LGBTQ+ inclusive care. The program served nearly 400 patients this past fiscal year and has received nearly 2,000 patient requests since 2022.

"This work is often seen as something unique, but it's also just part of what quality care should look like for every patient," said Rosemary Thomas, the program's director of operations. "We're fortunate to have a diverse group of faculty and staff who are deeply committed to carrying it forward."

Drs. Dalke and Watson bring their skills and expertise to their new roles at a moment when the program is adopting a new strategic plan, developed with input from across the health system, that focuses on clinical care, the work environment, and community engagement. A key initiative will be creating a community advisory board, an effort supported through a gift from the late Bob Schoenberg, founding director of the Penn LGBT Center.

In her new role, Dr. Watson, an assistant professor of medicine in infectious diseases, will work with the many Penn researchers who are studying different aspects of LGBTQ+ health. She hopes to ensure that Penn's research in the field is truly community-engaged and taps into the wisdom and needs of Philadelphia's vibrant LGBTQ+ community, and "to figure out how to do that in a sustainable way that's not extractive of the community," she said.

Dr. Dalke, the Benjamin Rush Associate Professor and vice chair for clinical operations in psychiatry, will be the program's liaison with the health system and University. "My role is oriented to helping the program be successful in achieving its strategic goals and priorities," she said. "Penn has led academic healthcare organizations in this area for a long time, and while we have a lot of internal support, there are many external headwinds to navigate."

2026-2027 University Catalog Now Available

The Office of the University Registrar has announced the release of the [2026-2027 University Catalog](#) for the University of Pennsylvania on June 9, 2026.

This edition of the University Catalog includes all degree-granting programs, many certificates offered across the University, and courses at all levels that are associated with these programs.

The catalog also includes the Pennbook, the Faculty Handbook, and many academic policies and resources. Many thanks to everyone who contributed to the work of compiling and publishing this latest catalog. Thank you.

The University Catalog can be found at <https://catalog.upenn.edu>. Please submit questions and comments to [Fresh Service](#).

—Margaret Kip, University Registrar

www.upenn.edu/almanac 3

Deaths

Kendal Barbee, Registrar's Office

Kendal Renee (Van Wambeke) Barbee, a coordinator, manager, and associate director in several Penn departments and schools, most recently the Registrar's Office, died on April 1, 2026. She was 54.

Ms. Barbee earned her Bachelor of Social Work from Calvin University and her Master of Education from Azusa Pacific University. In 2000, she joined Penn's School of Engineering & Applied Science as associate director of the office of academic programs. In 2006, she moved to the College of Arts & Sciences, where she served as an academic coordinator.

Seven years later, she accepted a position as associate director of the undergraduate division of the Wharton School, and in 2018, she became a manager in the department of biostatistics and epidemiology in the Perelman School of Medicine. In 2024, she moved to the Registrar's Office.

"Her work mattered to her because people mattered to her," said Ms. Barbee's family in an online tribute. "She believed in equality for everyone, in giving others a chance, and in doing the right thing even when it was not easy."

Ms. Barbee is survived by her children, Jordan Barbee and Cameron Barbee; her husband, Dennis Barbee; her mother, Carla Van Wambeke (Ladwig); her father, Joel Van Wambeke; her dog, Hudson; and a large extended family of cousins, relatives, and close friends.

In lieu of flowers, contributions may be made to the Abramson Cancer Center at 3535 Market Street, Suite 750, Philadelphia, PA 19104, or at <https://www.pennmedicine.org/giving/fund-for-abramson-cancer-center/donate>.

To read more about Ms. Barbee, visit <https://www.loganfuneralhomes.com/obituary/Kendal-Barbee>.



Kendal Barbee

Bonnie Lee Crosfield, Penn Museum

Bonnie Lee Crosfield, a former receptionist at the Penn Museum, died on March 6. She was 83.

Ms. Crosfield joined the staff at the Penn Museum in 1980 and worked there until her retirement in 2023. During her time there, she came to love her work and became a treasured member of the Penn Museum community. "She was the center and life force of museum culture for all of us lucky enough to have known her," said her former colleagues in an online tribute. "She went way beyond her



Bonnie Crosfield

Penn Vet Launches Dat-AI-Lab in Partnership with AgriGates

An innovative new initiative that aims to use the power of AI to crack the code of animal behavior and help Pennsylvania farmers and agriculture has launched at Penn Vet's New Bolton Center.

Dat-AI-Lab, a collaboration between Penn Vet researchers and AgriGates, a Philadelphia-based agri-tech firm, has already begun working with animals from the Swine Teaching and Research Center and New Bolton Center's dairy herd, collecting data that may one day better inform livestock care and management and advance animal husbandry in an agriculture-rich state.

"AI opportunities in animal agriculture are limited only by imagination and science-backed research and implementation," said Andrew Hoffman, Penn Vet's Gilbert S. Kahn Dean. "We look forward to engaging stakeholders, connecting investors, founders, and innovators with the academic AI ecosystem at Penn and our partners, and meeting the grand challenges and opportunities for the future."

Last year, AgriGates received a grant from the state's first \$10 million round of Agriculture Innovation Grants. Daniel Foy, co-founder of AgriGates and the new lab, said that the money helped kickstart Dat-AI-Lab, which stands for Data, Analysis, and Technology for Artificial Intelligence in Livestock Animal Behavior. In addition, Pennsylvania's Center for Poultry Livestock Excellence has contributed over \$200,000 over the past three years to help develop the AI and machine-learning technology to study animal behavior and, most recently, to help create the lab.

"Animal behavior is an underappreciated, universal economic indicator for the identification of clinical problems and the early diagnosis of health and welfare in animals," Mr. Foy said. Human observation is still "the gold standard in large animal care," but today's farms often face labor limitations, he said. Technology like AI helps collect huge amounts of data humans alone cannot and turn it into information valuable to farmers. "This is about giving us tools—the picks and the hard hats—to build a new foundation for animal agriculture and the ability to mine for new insights and values."

Thomas D. Parsons, another chief collaborator in the lab, directs both Penn Vet's Swine Teaching and Research Center and the Center for Stewardship Agriculture and Food Security. His work in advancing electronic sow feeding stations and open pen housing to replace confining gestation stalls has changed the way many pigs are housed, especially in Pennsylvania, and resulted in more humane, more efficient feeding practices. And other research done through the center has had a large and beneficial impact on animal agriculture in Pennsylvania and beyond.

Dr. Parsons, the Marie A. Moore Professor of Animal Welfare and Ethics, said the new lab's work will continue that mission. "This is actually our 25th anniversary of the swine center," he said. "I see the Dat-AI-Lab as really the next chapter in the swine center's journey." He also said there is a significant potential benefit for animal experts like himself and fellow researchers in working hand-in-hand with AI experts. "We spend a lot of time studying animal behavior and trying to understand the implications for animal health, animal welfare, and animal productivity, but it turns out that's an extremely labor-intensive task in terms of how we have to analyze the data. There's a tremendous opportunity with this new technology to really allow us to become much more efficient in our work."

Part of the lab's task will be building databases of knowledge of species-specific animal behavior. Eventually, said Mr. Foy, the information will be used to make better and more timely decisions about important areas like animal health and welfare. "We need to think about how we use the animals themselves to tell us how we should be better managing them," Mr. Foy said. "Using technology to do that is going to give us these digital eyes and ears for diagnostic and predictive capabilities."

This is particularly important at a time when fewer people are getting involved in agriculture, he said, and additionally, farmers need added resources.

Initially, Dat-AI-Lab will focus on New Bolton Center's swine and dairy animals, but Mr. Foy said the center has received interest from other research institutions in the U.S. and Europe about studying other species as well.

job description to help foreign students find safe and reasonably priced apartments, told them where to shop, babysat their children, and typed and edited their papers (long before computers were in fashion) and dissertations. She would be sure visitors knew where to find the mummies and explain how to gaze through the crystal ball to see each other upside down. If you needed to know how to reach a professor excavating in the deserts of Iran or in the rain forests of Guatemala, you knew Bonnie would have the information and help you reach out to them." In 2018, Ms. Crosfield was honored with an endowed seat in the Penn Museum's restored Harrison Auditorium.

Ms. Crosfield is survived by her children, Michaela Kim Crosfield and Alain Crosfield (Sefanit); and her grandchildren, Christine Lee Crosfield, Quinn Vincent Crosfield, and Daniel Evan Crosfield.

To read more about Ms. Crosfield, visit <https://www.pennsylvaniafuneralhomes.com/obituaries/bonnie-crosfield>.

To Report A Death

Almanac appreciates being informed of the deaths of current and former faculty and staff members, students and other members of the University community. Call (215) 898-5274 or email almanac@upenn.edu.

However, notices of alumni deaths should be directed to the Alumni Records Office at Suite 300, 2929 Walnut St., (215) 898-8136 or email record@ben.dev.upenn.edu.

University City District's 2026 State of University City Report

Spotlight on University City: University City is the region's leader in education, science, and innovation. The 2.4-square mile neighborhood boasts world-class institutions that catalyze nearly 85,000 jobs in fields including medicine, higher education, technology, real estate, and hospitality. University City is a transportation hub with some of the most bicycle- and pedestrian-friendly streets in the city, serves as a destination for culture seekers and food lovers, and is home to some of the most significant development projects and life science breakthroughs in the region. With diverse demographics, signature public spaces, a rich blend of housing and rental options, top-notch schools and hospitals, and amenities aplenty, University City is one of Greater Philadelphia's neighborhoods of choice.

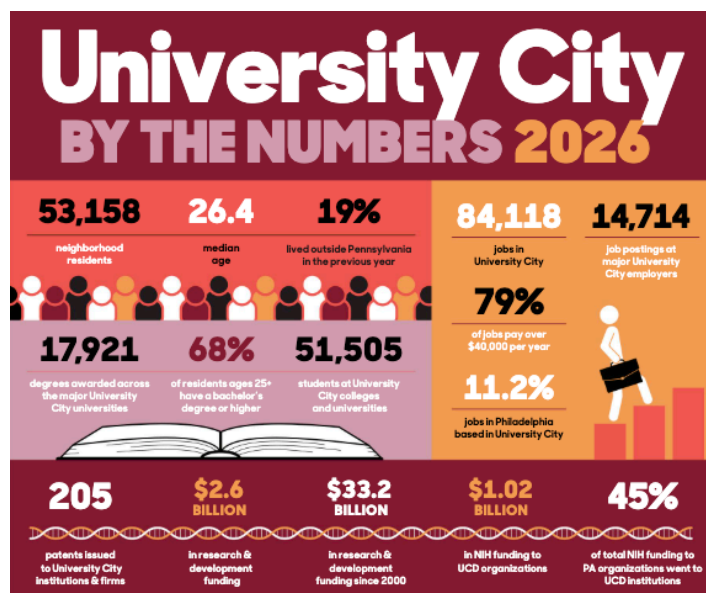
Real Estate Development: At a time when economic uncertainties continue to plague new construction and development plans, University City has fared considerably well. Our neighborhood is on pace to add 2.7 million square feet of new construction, including nearly 184 new units of multi-family housing, and surpass \$12 billion in cumulative real estate value, nearly doubling the same total from 2020. Progress on major residential, institutional, public space, and mixed-use projects marked another busy year of groundbreakings, topping outs, and ribbon cuttings in the neighborhood. On the office side, University City's occupancy rate fell slightly in 2025 to 80.6%, but remains the top rate in downtown Philadelphia, and among the highest in the greater Philadelphia region. Occupancy rates are on the upswing, according to CBRE, and University City's access to nearby amenities, proximity to multiple transportation options like William H. Gray III 30th Street Station, and connection to major anchor institutions will continue to attract companies seeking to do business in a premier employment and innovation hub.

Employment: While some job centers have struggled to retain employees as workplace patterns have shifted, University City's employment numbers remain steady due to new development, institutional expansions, and a burgeoning life sciences scene, and 2025 saw nearly 15,000 jobs posted by our neighborhood's main employers. 79% of University City's 84,000+ jobs pay over \$40,000 a year, compared to just over 60% for Philadelphia as a whole. University City accounts for approximately 11% of all jobs within Philadelphia, despite representing only 1.69% of the city's total footprint, and over 25% of our workforce commutes from neighboring counties in Pennsylvania, New Jersey, and Delaware. A large percentage of jobs are clustered at local hospitals and universities, but growth associated with nascent technology firms and the commercialization of research is also creating more employment opportunities at every rung of the career ladder. Leaders at the local, regional, and national levels are taking note of existing jobs and those on the horizon and are actively working to invest in and accelerate our status as a regional leader in life sciences and biotech, including newly created industry partnerships in healthcare and life sciences.

Higher Education: True to its name, University City offers top options in the region and nation for undergraduate and graduate studies. Over 51,000 students are enrolled in undergraduate or graduate programs at our institutions of higher education, and whether they come from around the city or around the world, scholars are drawn to our neighborhood for its access to nearby employment opportunities, the beautiful urban campuses, and the vitality of the surrounding community. Both the University of Pennsylvania and Drexel University fared well in recent *U.S. News & World Report* rankings, with Penn ranked the 7th best national university and tied for the top undergraduate business program in the country, while Drexel excelled in similar lists for most innovative schools and was ranked second nationally for its co-ops/internships.

Healthcare: The neighborhood's medical institutions—Hospital of the University of Pennsylvania (HUP), Penn Presbyterian Medical Center, Children's Hospital of Philadelphia (CHOP), and Michael J. Crescenz VA Medical Center—combine to account for just under 52% of all jobs in University City, making them an essential component of the local economy. Both CHOP and HUP receive annual accolades for quality of care and as top national workplaces: in the 2025/2026 *U.S. News and World Report* rankings, both HUP and CHOP earned spots on the honor rolls for top national hospitals, and CHOP placed 38th on Forbes' list of best large employers for 2026. Our local hospitals are also leading the way in new treatments, procedures, and medical technologies, and the forthcoming arrival of CHOP's Morgan Center for Research and Innovation will add to our robust inventory of dynamic research facilities and labs.

Transportation: Need to get around the neighborhood? You're in luck. University City boasts excellent options for bicyclists, pedestri-



ans, and commuters using public transit, earning [Walkscore.com](https://www.walkscore.com/)'s "paradise" status for all three modes of transportation. Of the University City residents who work outside their homes, 66% commute via foot, bike, or public transit. We welcome an estimated 63,000 inbound commuters every weekday who arrive via public transit, SEPTA regional rail, and other forms of transportation, and the total of 5.6 million Amtrak riders using 30th Street Station is the highest number of passengers since we began tracking this figure in 2010.

People: University City is home to a diverse cross-section of over 53,000 residents, comprised of young professionals, families, and long-time community members. Due in large part to the nearly 30,000 students living in University City who are enrolled at local universities, our population skews young (median age of 26.35), highly educated (68% of residents aged 25 or older hold at least a bachelor's degree), and transient. Our local population is also very diverse—according to the diversity index, there's a 66% chance that two random people meeting in our neighborhood will be of different ethnicities, compared an average of 46% across Philadelphia as a whole.

Life in the Neighborhood: How do you define a great place to live? For University City, it comes down to fantastic amenities, an excellent dining scene, diverse housing options, world-class transit, parks and public spaces galore, and communities with distinct and unique personalities. Options for housing are as varied as the residents, with historic homes, walk-up apartments, stylish high-rises, dormitories, and more. Over 100 acres of public space and parks offer respite from the city streets and places for people to relax, recharge, and spread out. The streets, sidewalks, and transit stations combine to offer excellent options for traveling within the neighborhood or to points beyond, and our neighborhood has again earned a "paradise" distinction from [Walkscore.com](https://www.walkscore.com/) for walking, biking, and transit. An eclectic dining scene caters to every appetite, featuring a blend of longstanding mom-and-pop restaurants, cuisine from around the globe, and outposts of local and national chains.

Innovation: University City is a nationally recognized hub for advances in science, research, and medicine. Cutting-edge innovations originate out of 2.4 million square feet of lab space in research hubs including the Wistar Institute, Pennovation, B+labs, and uCity Square, among others. This confluence of labs, benches, and clinics contributed to Philadelphia ranking at #7 in top U.S. metros for life sciences research and development talent, according to CBRE. Discoveries initiated in University City spark billions of dollars in economic growth and attract international attention in fields like biotech, robotics, and medicine. In 2025, 205 patents were issued to University City businesses and institutions, who also accounted for \$1.02 billion in NIH funding, representing 45% of all total NIH funding across the entire state of Pennsylvania, and over \$33 billion in cumulative R&D spending since 2000.

For the full report, visit <https://issuu.com/universitycity/docs/the-state-of-university-city-2026-3ab36aad984b11>.

—University City District

Honors & Other Things

Max Cavitch: Three Recognitions

Max Cavitch, an associate professor of English and co-director of the psychoanalytic studies program in the School of Arts & Sciences, has been named an International Scholar of the British Psychoanalytic Council. He has also received the Dora Maar House Residential Fellowship in Ménerbes, France, and has been named a Jennifer Egan Creative Approaches to Mental Health Residential Fellow at the Mesa Refuge in northern California.

Dr. Cavitch joined Penn's faculty in 1999, after receiving his BA from Yale and his PhD from Rutgers. He teaches courses on many forms and phases of American and Anglophone literature of the modern period. His teaching and research interests also include animal studies, cinema and media studies, comparative literature, poetry and poetics, gender and sexuality studies, and psychoanalytic studies.

Heather Greysen: Kathy N. Shaw Award for Excellence in Teaching

Heather Greysen, a clinical lecturer of biobehavioral health sciences in Penn Nursing, has been awarded the Kathy N. Shaw Award for Excellence in Teaching from the Perelman School of Medicine's Center for Healthcare Improvement and Patient Safety (CHIPS). This award recognizes her exceptional dedication and effectiveness as an educator and mentor in the field of quality improvement and patient safety.

Sarah Gronningsater: ASLH William Nelson Cromwell Book Prize

Sarah Gronningsater, an associate professor of history in the School of Arts & Sciences, has been awarded the William Nelson Cromwell Book Prize by the American Society for Legal History (ASLH) for her acclaimed book, *The Rising Generation: Gradual Abolition, Black Legal Culture, and the Making of National Freedom*. The award is presented to an early career scholar for the best book in American legal history. The author of the winning book receives a prize of \$5,000. The foundation awards the prize after a review of the recommendation of ASLH's Cromwell Prize Advisory Committee.

Dr. Gronningsater is a historian of the eighteenth- and nineteenth-century United States, with particular interests in slavery and abolition, and in the history of American democracy. She works at the intersection of legal, political, constitutional, and social history.

Melissa Lee: APSA Mary Parker Follet Prize

Melissa Lee, the Klein Family Presidential Associate Professor of Political Science in the School of Arts & Sciences, has won the American Political Science Association's Politics and History Section's Mary Parker Follet Prize for her article "From Pluribus to Unum? The Civil War and Imagined Sovereignty in Nineteenth Century America." The prize is awarded annually



Melissa Lee

to the best scholarly article in politics and history. Dr. Lee is also the director of the World House Student Fellows Program at Perry World House. Her research focuses on the international and domestic politics of state building and state development.

Sarah Guérin: 2026 John Nicholas Brown Book Prize from the Medieval Academy of America

Sarah Guérin, an associate professor of the history of art in the School of Arts & Sciences, has received the 2026 John Nicholas Brown Prize from the Medieval Academy of America for her book *French Gothic Ivories: Material Theologies and the Sculptor's Craft* (2022).

Dr. Guérin received a BSc from the University of Saskatchewan and her PhD from the University of Toronto. Before joining Penn's faculty in 2016, she was an assistant professor at the Université de Montréal and held postdoctoral positions at Columbia University and the Courtauld Institute of Art. Her teaching focuses on art history in Medieval Europe, 700–1400.

Lynda Kellam: Library Journal 2026 Movers & Shakers

Lynda Kellam, the Director of Research Data & Digital Scholarship in the Penn Libraries, has been named to the Library Journal's Movers & Shakers 2026 list as a community builder. The annual feature highlights more than 50 emerging leaders and innovators in the library world. It recognizes librarians, staff, vendors, and partners who demonstrate creativity, courage, and leadership in advancing library services, combating censorship, and supporting their communities.



Lynda Kellam

Recently, Dr. Kellam was also appointed to the governing council for ICPSR, an international consortium of 800+ academic and research bodies. ICPSR is the oldest and largest data archive in the country. Each fall, six members are approved by the membership to serve four-year terms on the ICPSR Council, joining six ongoing members.

In her role at Penn, Dr. Kellam leads a team supporting research data management, data science and visualization, GIS and mapping, digital humanities, AI and machine learning, ScholarlyCommons, and digital projects. A co-editor of *Databrarianship: The Academic Data Librarian in Theory and Practice* and co-author of *Numeric Data Services and Sources for the General Reference Librarian*, Dr. Kellam has authored book chapters and peer-reviewed articles on research data services, data literacy, and the integration of data into library instruction and scholarly communication.

Dr. Kellam is a co-founder and steering committee member of the Data Rescue Project, a collaborative initiative to preserve vulnerable public data sets, which received the National Digital Stewardship Alliance Excellence Award in 2025 and the ProQuest/GODORT/ALA "Documents to the People" Award in 2026. When data on

public health, the environment, gender identity, census research, and diversity initiatives began to disappear from federal websites in January 2025, Dr. Kellam helped organize and coordinate the volunteer-powered Data Rescue Project (DRP), which backs up federal data—files and their metadata and documentation—in formats that can be freely accessed by users through ICP-SR's online repository DataLumos. As of June 2026, volunteers had identified and preserved over 2,900 at-risk data sets from more than 90 different federal agencies and offices.

She also serves on the governance board of the Data Curation Network, on steering or planning committees for projects focused on public data preservation and humanitarian archives, and on the Assembly of Reviewers for CoreTrustSeal repository certification. She serves as the Secretary of IASSIST, an international organization of data professionals.

Dr. Kellam holds a PhD in American history and an MLIS from the University of North Carolina at Greensboro, and an MA in political science from the University of Wisconsin–Madison, where she held Fulbright and MacArthur fellowships.

James Ker: 2025 Charles J. Goodwin Award of Merit from SCS

James Ker, a professor of classical studies in the School of Arts & Sciences, has won the most prestigious scholarly award in classical studies for his monograph, *The Ordered Day: Quotidian Time and Forms of Life in Ancient Rome* (2023); the 2025 Charles J. Goodwin Award of Merit of the Society for Classical Studies (SCS). Up to three book prizes are presented annually at the SCS Annual Meeting.

At Penn, Dr. Ker is also the graduate chair of Greek and Latin languages and literatures and the faculty advisor for the post-baccalaureate program in classical studies. His research focuses on the cultural history of the Roman world, both in antiquity and in its reception.

Serena Mayeri: 2026 James Willard Hurst Book Prize From LSA

Serena Mayeri, the Arlin M. Adams Professor of Constitutional Law in Penn Carey Law and a professor of history, has received the Law and Society Association (LSA)'s 2026 James Willard Hurst Book Prize. The prize recognizes her book, *Marital Privilege: Marriage, Inequality, and the Transformation of American Law* (2025).

Awarded annually to the best work in socio-legal history published in the previous year, the Hurst Prize recognizes scholarship that illuminates the interrelationship between law and society, including the ways legal institutions shape and are shaped by social, political, and economic change.

Marital Privilege traces how, beginning in the 1960s, advocates and ordinary Americans transformed the legal primacy of marriage—the dense web of laws that had long tied rights, benefits,



Serena Mayeri

(continued on page 7)

(continued from page 6)

and protections to marital status—into a regime Dr. Mayeri describes as “marital privilege.”

Drawing on archival research, legal documents, and historical case studies, Dr. Mayeri brings to life both landmark and lesser-known cases that reshaped American family law and public policy. She traces the theories and evolving strategies of litigants, advocacy organizations, legal scholars, and social movements that challenged marital supremacy, while also examining how reforms intended to advance equality and individual autonomy could simultaneously reinforce disparities of wealth, power, and access.

The LSA praised the work in its award announcement. “Combining sweeping ambition, doctrinal acumen, and a keen sense of historical contingency, *Marital Privilege* provides a magisterial account of a crucial transformation of American law,” the committee wrote.

“I have long admired the scholarship the Hurst Prize recognizes, so to be in the company of scholars who have received this award is especially meaningful to me,” Dr. Mayeri said.

The prize is one of 15 annual awards through which the LSA honors scholars for groundbreaking publications and significant contributions to the study of law and society.

Dr. Mayeri’s scholarship focuses on constitutional law, legal history, reproductive rights and justice, and equality law in the United States. Her first book, *Reasoning from Race: Feminism, Law, and the Civil Rights Revolution* (2011), received the Littleton-Griswold Prize from the American Historical Association and the Darlene Clark Hine Award from the Organization of American Historians.

Zachary Lesser: 2025 Innovation Award from the British Shakespeare Association

Zachary Lesser, the Edward W. Kane Professor of English in the School of Arts & Sciences, has won the 2025 Innovation Award from the British Shakespeare Association for *Shakespeare Census*, an online database of all extant copies of Shakespeare editions before 1700.

Dr. Lesser received his PhD in English literature from Columbia University and his BA in Renaissance studies and religious studies from Brown University. His teaching and research focus on Shakespeare and early modern drama, the history of material texts, bibliography and editing, early modern political and religious debate, and digital humanities.



Zachary Lesser

Robert H. Mundheim: University in Exile Award from NSSR

Robert H. Mundheim, the University Professor of Law and Finance Emeritus and former dean of the Carey Law School, has received the University in Exile Award from the New School for Social Research (NSSR). The award was

presented at a special ceremony on May 14 in New York City.

Established in 1998, the award commemorates the founding of the University in Exile at NSSR in 1933, which provided refuge to scholars fleeing persecution in Europe. Today, the New University in Exile Consortium continues that mission, supporting scholars at risk around the world. The recognition carries particular resonance for Mr. Mundheim, who fled Nazi Germany with his family as a child.



Robert Mundheim

The first University in Exile became the home of rescued, largely Jewish, refugee scholars from Germany and France. The New University in Exile Consortium is a global group of colleges and universities that continues to provide a haven for scholars at risk. Today, members of the New University in Exile Consortium host nearly 300 exiled scholars from 30 countries.

“As an exile (albeit not a scholar in exile), I am immensely proud to receive this award from the University in Exile and the New School,” said Mr. Mundheim. “I have been associated with them for roughly 30 years and share their focus on the critical importance of an intellectually open educational environment.”

Mr. Mundheim joined Penn Carey Law’s faculty in 1965 and served as dean of the school from 1982 to 1989. During his tenure, he led efforts to strengthen the school’s commitment to professionalism and public service, including establishing a mandatory public service requirement for graduation that remains in place today. He also launched the campaign to build Penn Carey Law’s Tanenbaum Hall and advanced a significant expansion of the school’s endowment.

“This well-deserved recognition reflects Bob’s longstanding contributions to NSSR, as well as the wise and steady leadership he has brought to higher education throughout his distinguished career,” said Sophia Z. Lee, dean and Bernard G. Segal Professor of Law. “At Penn Carey Law, his influence continues to be felt through the enduring public service graduation requirement he initiated. We are proud to celebrate this moment with him—and honored to count him among the leaders who have shaped our institution and its values.”

Widely regarded as a leading business lawyer, Mr. Mundheim has built a distinguished career spanning academia, private practice, business, and government service. He is currently of counsel to A&O Shearman LLP in New York City, where his work focuses on corporate governance. From 1977 to 1980, he served as general counsel to the U.S. Treasury Department, where he played a prominent role in negotiating the release of U.S. hostages in Iran. He later served as co-chairman of Fried Frank, and, in 1992, became senior executive vice president and general counsel of Salomon Inc., before returning to Shearman & Sterling (which later became A&O Shearman) in 1999.

Valentina Proust and Areli Rocha: ASC’s 2026 James D. Woods Award

Annenberg School doctoral candidate Valentina Proust and doctoral student Areli Rocha have been named co-recipients of the 2026 James D. Woods Award.

Given in memory of Annenberg graduate student James D. Woods, the award is granted to outstanding graduate teaching assistants.

Valentina Proust was nominated for the award by Annenberg School Dean Sarah Banet-Weiser and Penn President Emerita Amy Gutmann for her work as a teaching fellow for their course COMM 2898: The Art and Ethics of Communication. Dean Banet-Weiser and Dr. Gutmann praised Ms. Proust’s willingness to learn new material, her dedication to mentoring students, and her warmth, generosity, and professionalism. “Over our many years of teaching at Annenberg, Valentina stands out as one of the most insightful, proactive, caring, and expert teaching fellows we have had the privilege and pleasure of working with,” Dean Banet-Weiser and Dr. Gutmann said.

In her own work, Ms. Proust examines how social movements use mediated memory to shape their discourses, with particular attention to the effects of grief, mourning, and hope.

Areli Rocha was nominated by lecturer Murali Balaji for her work as a teaching fellow for two courses: COMM 2860: Media and Masculinity and COMM 3650: Media and the Apocalypse. Dr. Balaji commended Ms. Rocha’s willingness to lead class discussions, her willingness to use her own expertise in AI to bring nuance to classroom lessons, and her ability to adapt her teaching methods to different classes. “Areli has demonstrated tremendous growth as a teacher and shows great care for our students,” Dr. Balaji said. “Some of the students remarked that Areli is the best teaching fellow they have had in their time at Penn.”

In her own research, Ms. Rocha explores technological and discursive constructions of reality and personhood, with particular interest in the multimodal semiotic signs that influence ideas, representations, and interactions with non-human entities.

Ala Stanford: Distinguished Daughter of Pennsylvania and Philadelphia Magazine’s Top 150 Most Influential Philadelphians

Ala Stanford, a professor of practice in biology, has been announced as a new inductee into the Distinguished Daughters of Pennsylvania Class of 2025. Dr. Stanford is a nationally celebrated public health leader, surgeon, and founder of the Black Doctors COVID-19 Consortium. A practicing physician for more than 20 years, she became a national voice for health equity during the COVID-19 pandemic, founding the consortium and directly serving more than 100,000 Philadelphians without access to testing and care.



Ala Stanford

(continued on page 9)

**Division of Public Safety
University of Pennsylvania Police Department Crime Report**

About the Crime Report: Below are the crimes against persons and/or crimes against property from the campus report for **June 1-7, 2026**. The crime reports are available at: <https://almanac.upenn.edu/sections/crimes>. Prior weeks' reports are also online. —Eds.

This summary is prepared by the Division of Public Safety (DPS) and contains all criminal incidents reported and made known to the Penn Police, including those reported to the Philadelphia Police Department (PPD)

that occurred within our patrol zone, for the dates of **June 1-7, 2026**. The Penn Police actively patrol from Market Street to Baltimore Avenue and from 30th Street to 43rd Street in conjunction with the Philadelphia Police.

In this effort to provide you with a thorough and accurate report on public safety concerns, we hope that your increased awareness will lessen the opportunity for crime. For any concerns or suggestions regarding this report, please call DPS at (215) 898-7297. You can view the daily crime log on the [DPS website](#).

Penn Police Patrol Zone

Market Street to Baltimore Avenue and from 30th Street to 43rd Street

Crime Category	Date	Time	Location	Description
<i>Assault</i>	06/03/26	12:14 PM	4002 Chestnut St	Store employee assaulted; sustained minor injury
	06/06/26	2:12 AM	3901 Chestnut St	Store employee was assaulted by a delivery driver who fled the area
	06/06/26	2:17 AM	3604 Chestnut St	Store employees were pepper sprayed by an unknown male who fled the area
	06/06/26	7:49 PM	4000 Walnut St	Complainant was punched and bitten by a subject who was detained by police
<i>Auto Theft</i>	06/06/26	7:30 PM	100 S 42nd St	Stolen automobile
	06/06/26	12:20 AM	3900 Walnut St	Theft of electric bike
<i>Bike Theft</i>	06/04/26	8:59 PM	4030 Spruce St	Theft of a secured bicycle from complainant's porch
<i>Burglary</i>	06/01/26	9:25 AM	215 S 33rd St	Burglary discovered inside secured location; items stolen
<i>Other Offense</i>	06/03/26	10:03 AM	255 S 38th St	Complainant reported receiving harassing emails
<i>Retail Theft</i>	06/01/26	4:32 PM	3604 Chestnut St	Retail theft of consumable goods
	06/01/26	10:24 PM	3744 Spruce St	Retail theft of consumable goods; offenders were detained and returned items
<i>Theft from Building</i>	06/02/26	9:19 PM	4233 Chestnut St	Retail theft of alcohol
	06/03/26	3:58 AM	3604 Chestnut St	Retail theft of consumable goods
	06/03/26	9:13 PM	3604 Chestnut St	Retail theft of consumable goods
	06/02/26	10:50 AM	3400 Spruce St	Theft of jewelry from complainant's purse
	06/02/26	2:22 PM	200 S 40th St	Theft of a wallet from purse in bank
<i>Theft Other</i>	06/03/26	12:02 PM	3730 Walnut St	Theft of a credit card from unsecured area
	06/07/26	6:19 PM	51 N 39th St	Theft of complainant's credit cards and cash from unsecured area
	06/02/26	7:53 PM	3900 Walnut St	Theft of tools from construction site on highway
	06/04/26	1:29 PM	4230 Pine St	Package theft from complainant's front porch
	06/07/26	8:52 PM	4211 Sansom St	Package theft from complainant's front porch

Philadelphia Police 18th District

Schuylkill River to 49th Street & Market Street to Woodland Avenue

Below are the crimes against persons from the 18th District: 9 incidents and 1 arrest were reported for **June 1-7, 2026** by the 18th District, covering the Schuylkill River to 49th Street & Market Street to Woodland Avenue.

Crime Category	Date	Time	Location
<i>Aggravated Assault/Arrest</i>	06/02/26	8:51 AM	S 43rd & Walnut Sts
<i>Aggravated Assault</i>	06/06/26	2:40 AM	3604 Chestnut St
	06/06/26	2:07 PM	1433 S. Fallon St
<i>Assault</i>	06/06/26	3:29 PM	220 S 47th St
	06/03/26	12:22 AM	4000 Blk Market St
	06/03/26	10:47 AM	255 S 38th St
	06/03/26	12:29 PM	4002 Chestnut St
	06/06/26	2:39 AM	3901 Chestnut St
	06/06/26	8:08 PM	4021 Walnut St

The Division of Public Safety offers resources and support to the Penn community. DPS has developed a few helpful risk reduction strategies outlined below. Know that it is *never* the fault of the person impacted (victim/survivor) by crime.

- See something concerning? Connect with Penn Public Safety 24/7 at (215) 573-3333.
- Worried about a friend's or colleague's mental or physical health? Get 24/7 connection to appropriate resources at (215) 898-HELP (4357).
- Seeking support after experiencing a crime? Call Special Services (support and advocacy resources) at (215) 898-4481 or email an advocate at specialservices@publicsafety.upenn.edu.
- Use the [Walking Escort](#) and [Riding](#) services available to you free of charge.
- Take a moment to update your cell phone information for the [UPennAlert Emergency Notification System](#).
- Download the [Penn Guardian App](#), which can help police better find your location when you call in an emergency.
- Access free [self-empowerment and defense courses](#) through Penn DPS.
- Stay alert and reduce distractions. (Using cell phones, ear buds, etc. may limit your awareness.)
- Orient yourself to your surroundings. (Identify your location, nearby exits, etc.)
- Keep your valuables out of sight and only carry necessary documents.

Update

Summer AT PENN

CHILDREN'S ACTIVITIES

6/17 *June Storytime*; storytime and an exercise in mindfulness, featuring a reading of *Be a Tree!* by Maria Gianferrari, which reminds us of our connection with trees and inspires audiences to step back and take in the world around them; 10:30 a.m.; Outdoor Classroom, Morris Arboretum & Gardens; free with admission (Morris Arboretum & Gardens).

FITNESS & LEARNING

6/20 *Cathead Basket Making Workshop with Janine Wang*; participants will learn traditional weaving techniques to construct their own classic cathead basket in the Shaker tradition; 10:30 a.m.-5 p.m.; Institute of Contemporary Art; register: <https://tinyurl.com/cathead-basket-jun-20> (Institute of Contemporary Art).

6/21 *Sunday Reset with Dope Botanicals*; using Shaker-inspired principles of simplicity and everyday practice, explore how to build herbal supports that are honest and repeatable; 2-4 p.m.; Institute of Contemporary Art; register: <https://tinyurl.com/sunday-reset-jun-21> (Institute of Contemporary Art).

College of Liberal & Professional Studies
Online webinars. Info: <https://www.lps.upenn.edu/about/events>.

6/22 *Penn LPS Online Certificates: Meet Us Mondays*; 12:30 p.m.

Master of Applied Criminology and Police Leadership Virtual Information Session; 2 p.m.

Morris Arboretum & Gardens

In-person events at Morris Arboretum & Gardens. Info: <https://www.morrisarboretum.org/see-do/events-calendar>.

6/20 *Meditation in Motion*; join instructor Aimée Alegria Barry for a workshop in meditation techniques that include qigong stretches, tai chi walking, guided meditation and more; 10:30 a.m.; fee: \$35/general, \$30/members.

TALKS

6/16 *Mobilizing for Protest in India: Lessons from the Anti-CAA and Farmers' Movements*; Mandeep Punia, journalist; Gurpreet Singh Sangha, activist for farmers in India; Jawaharlal Nehru University; 10 a.m.; online webinar; register: <https://tinyurl.com/pwh-panel-jun-16> (Perry World House).

6/19 *From Personal Story to Social Impact: The Journey Behind "Seeds of Futures"*; José Mauro Rocha de Barros, Global Possibility Network; 11 a.m.; Zoom webinar; register: <https://tinyurl.com/rocha-talk-jun-19> (Graduate School of Education).

This is an update to the [Summer AT PENN calendar](#), which is available now. To submit events for future AT PENN calendars and weekly updates, email almanac@upenn.edu.

Almanac Publication Schedule

This is the last issue of Volume 72 of *Almanac*. The first issue of Volume 73 (which will span the 2026-2027 academic year) will be published on Tuesday, July 14. To submit items for that issue, email almanac@upenn.edu.

Honors & Other Things

(continued from page 7)

Dr. Stanford has since gone on to establish and lead the Dr. Ala Stanford Center for Health Equity to expand access to care in Philadelphia; she has also served as regional director of the U.S. Department of Health and Human Services for the mid-Atlantic region. Board-certified in both pediatric and adult general surgery, Dr. Stanford is the author of the best-selling book, *Take Care of Them Like My Own: Faith, Fortitude, and a Surgeon's Fight for Health Justice*.

In 2025, Dr. Stanford was also named to *Philadelphia Magazine's* Top 150 Most Influential Philadelphians list, which noted her run to become the next U.S. Representative from Pennsylvania's Third Congressional District.

Emily Steiner: Fellow of the Medieval Academy of America

Emily Steiner, the A. M. Rosenthal Professor of English in the School of Arts & Sciences and the undergraduate faculty director of the Wolf Humanities Forum, has been elected a fellow of the Medieval Academy of America.

Dr. Steiner received her BA from Brown University and her PhD from Yale. She is the author of *Documentary Culture and the Making of Medieval English Literature, Reading "Piers Plowman," and John Trevisa's Information Age: Knowledge and the Pursuit of Literature, c.1400*. She has co-edited several collections of essays, and her articles have appeared in *The Yearbook of Langland Studies, New Medieval Literatures, Studies in the Age of Chaucer, Representations, New Literary History, and Exemplaria*, among others.

Rachel Watkins: American Anthropological Association Presidential Award

Rachel Watkins, an associate professor of anthropology in the School of Arts & Sciences, has received the American Anthropological Association (AAA) Presidential Award. The award is presented annually to honor extraordinary contributions to anthropology.

In addition to her academic duties at Penn, Dr. Watkins is also an associate curator of the biological anthropology section at the Penn Museum. Her work focuses on African American biohistory and social history, including: skeletal biology, Black feminist critiques of science, the ethical treatment of human remains, and descendant community engagement.

Dr. Watkins began her training at Howard University, studying the remains of people in the William Montague Cobb anatomical collection, and ancestral remains unearthed from the New York African Burial Ground in lower Manhattan. Dr. Watkins also consults with organizations and groups to support historic preservation and interpretation guided by descendant communities. Her research has been published in journals such as *American Anthropologist, Current Anthropology, Historical Archaeology, and the American Journal of Biological Anthropology*.



Rachel Watkins

gy. She is a member of the American Anthropological Association's Commission for the Ethical Treatment of Human Remains.

Liliane Weissberg: 2026 Humboldt Research Prize

Liliane Weissberg, a professor of French and Francophone, Italian, and Germanic Studies in the School of Arts & Sciences, has received the 2026 Alexander von Humboldt Research Award for her research on German-Jewish literature and culture.

Dr. Weissberg focuses on German and American literatures from the late eighteenth century to today, literary and psychoanalytic theory, and German-Jewish studies. She completed her PhD at Harvard University and also studied at the Freie Universität Berlin. Dr. Weissberg's work has been supported by a John Simon Guggenheim Memorial Foundation Fellowship and the Alexander von Humboldt Research Award. Her research has been published widely, both in the United States and Germany.

Bo Zhen: 2026 Optica Fellow

Bo Zhen, the Jin K. Lee Presidential Associate Professor of Physics & Astronomy in the School of Arts & Sciences, has been elected a 2026 Optica Fellow for his pioneering discoveries of topological phenomena in photonics and his advancement of scientific understanding of light-matter interaction in nano-photonics systems.

This distinction was awarded to 121 members from 24 countries for their significant contributions to the advancement of optics and photonics through research, business, education, engineering, and service to Optica and its community. Dr. Zhen, who joined the Penn faculty in 2018, earned his doctorate in physics from MIT and his BS in mathematics and physics from Tsinghua University.

Almanac

3910 Chestnut Street, 2nd floor
Philadelphia, PA 19104-3111
Phone: (215) 898-5274 or 5275
Email: almanac@upenn.edu
URL: www.upenn.edu/almanac

The University of Pennsylvania's journal of record, opinion and news is published Tuesdays during the academic year, and as needed during summer and holiday breaks. Its electronic editions on the Internet (accessible through the Penn website) include HTML, Acrobat and mobile versions of the print edition, and interim information may be posted in electronic-only form. Guidelines for readers and contributors are available on request and online.

EDITOR
ASSOCIATE EDITOR
ASSISTANT EDITOR
EDITORIAL ASSISTANT
STUDENT ASSISTANT

Alisha George
Jackson Betz

ALMANAC ADVISORY BOARD: For the Faculty Senate: Sunday Akintoye, Christine Bradway, Daniel Cohen, Al Filreis, Cary Mazer, Martin Pring. For the Staff Assemblies: Jon Shaw, PPSA; Marcia Dotson, WPPSA; Rachelle R. Nelson, Librarians Assembly.

The University of Pennsylvania seeks talented students, faculty and staff from a wide variety of backgrounds, experiences, and perspectives. The University of Pennsylvania does not discriminate on the basis of race, color, sex, sexual orientation, religion, creed, national origin (including shared ancestry or ethnic characteristics), citizenship status, age, disability, veteran status or any other legally protected class status in the administration of its admissions, financial aid, educational or athletic programs, or other University-administered programs or in its employment practices. Questions or complaints regarding this policy should be directed to the executive director of the Office of Equal Opportunity Programs, 421 Franklin Building, 3451 Walnut Street, Philadelphia, PA 19104-6205; or (215) 898-6993.

CCTV Locations: University of Pennsylvania Cameras

The Division of Public Safety is committed to enhancing the quality of life for the campus community by integrating the best practices of public and private policing with state-of-the-art technology. A critical component of a comprehensive security plan using state-of-the-art technology is Closed Circuit Television (CCTV).

As prescribed by the University Policy "Closed Circuit Television Monitoring and Recording of Public Areas for Safety and Security Purposes" (*Almanac* April 29, 2008), the locations of all outside CCTV cameras monitored by Public Safety are to be published semi-annually in *Almanac*. The locations and descriptions of these cameras can also be found on the Division of Public Safety website: www.publicsafety.upenn.edu/about/penncomm#cctv.

The following existing cameras meet those criteria:

University of Pennsylvania Cameras

39th St. & Baltimore Ave. (Vet School, Hill Pavilion)
 40th St. & Baltimore Ave.
 41st St. & Baltimore Ave.
 42nd St. & Baltimore Ave.
 43rd St. & Baltimore Ave.
 31st & Chestnut Sts. (Left Bank)
 33rd & Chestnut Sts.
 34th & Chestnut Sts.
 36th & Chestnut Sts.
 38th & Chestnut Sts.
 40th & Chestnut Sts.
 4040 Chestnut St. (front)
 41st & Chestnut Sts.
 43rd & Chestnut Sts.
 46th & Chestnut Sts.
 Steve Murray Way & Chestnut St.
 38th St. & Hamilton Walk
 36th St. & Locust Walk
 37th St. & Locust Walk (1&2)
 38th St. & Locust Walk
 39th St. & Locust Walk
 40th St. & Locust Walk
 41st & Locust Sts.
 42nd & Locust Sts.
 43rd & Locust Sts.
 39th & Ludlow Sts.
 40th & Ludlow Sts.
 34th & Market Sts.
 36th & Market Sts.
 38th & Market Sts.
 40th & Market Sts.
 40th & Pine Sts.
 41st & Pine Sts.
 42nd & Pine Sts.
 36th & Sansom Sts. (Franklin Bldg.)
 38th & Sansom Sts.
 39th & Sansom Sts.
 4040 Sansom St. (rear)
 Steve Murray Way & Sansom Sts.
 33rd St. & Smith Walk
 34th & Spruce Sts.
 36th & Spruce Sts.
 37th & Spruce Sts.
 38th & Spruce Sts.
 39th & Spruce Sts.
 40th & Spruce Sts.
 41st & Spruce Sts.
 42nd & Spruce Sts.
 43rd & Spruce Sts.
 31st & Walnut Sts. (Left Bank)
 33rd & Walnut Sts.
 34th & Walnut Sts.
 36th & Walnut Sts.
 37th & Walnut Sts.
 38th & Walnut Sts.
 39th & Walnut Sts.
 40th & Walnut Sts.
 41st & Market Sts.
 41st & Walnut Sts.
 43rd & Walnut Sts.
 4119 Walnut St.
 100 Block of S. 37th St.
 Blockley Hall (bike racks 1-8)
 Blockley Hall (roof)
 Boat House (exterior cameras 1-4)
 BRB II (loading dock-exterior)
 BRB II (roof-rear and front)
 Caster Building (rear entrance)
 Caster Building (bike racks 1&2)
 Chemistry Building (bike racks 1-4)
 CineMark

College Green (1&2)
 College Green (lower)
 College Hall (exterior basement)
 CRB (roof)
 CRB-Stemmler Hall (main entrance)
 CRB-Stemmler Bridge (interior)
 CRB-Stemmler Bridge (main entrance hall)
 English House (Law School bike rack)
 Fels Center (bike rack)
 Fels Institute of Government
 Fisher-Bennett Hall (overseeing Levine Bldg.)
 Franklin Building
 Franklin Building Annex
 Franklin Field
 Garage 40 (rooftop)
 Generational Bridge (1&2)
 Gittis Hall (Chestnut Street Basement Stair Door)
 Gregory College House (bike rack)
 GSE on Plaza 1
 GSE on Plaza 62
 Harnwell College House
 Harrison College House (1&2)
 Hayden Hall (east door & west door)
 High Bay Garage (entrance)
 Hilton (Homewood Suites-1&2)
 Hollenback (lower level rear parking)
 Hollenback (rooftop)
 Housekeeping Annex (parking lot)
 Houston Hall/Penn Commons
 Irving & Preston Sts.
 James G. Kaskey Memorial Park (BioPond & Trail)
 Jerome Fisher (main entrance)
 John Morgan Building (Hamilton Walk)
 Jon M. Huntsman Hall (Bike Rack)
 Jon M. Huntsman Hall (Loading Dock)
 Jon M. Huntsman Hall (NE corner)
 Kane Park (Spruce Street Plaza)
 Law School (Sansom St.)
 Left Bank (loading dock)
 Levy Dental (loading dock)
 Levy Dental (rooftop)
 Love statue
 Memorial Garden Walkway by Van Pelt
 Meyerson Hall (bike racks 1&2)
 Mod 7 (North)
 Mod 7 (SE)
 Mod 7 (West)
 Museum (33rd St.-exterior)
 Museum (Kress entrance-exterior)
 Museum (Kress entrance-interior)
 Museum (loading dock-exterior)
 Museum (upper loading dock-exterior)
 Museum (Warden Garden-main entrance)
 Museum (Stoner Courtyard-lower courtyard)
 New College House West (Bike Rack)
 Old Vet Quad (west gate)
 Osler Circle Courtyard
 Palestra (1&2)

Penovation Works
 Penovation Works (gate)
 Pottruck (bike racks 1&2)
 Public Safety Annex Building (2-5)
 Richards Labs (rear door)
 Ringe Squash Court Parking
 Rodin College House (bike rack)
 Rosenthal (parking lot)
 Ryan Vet Hospital (main entrance area)
 Schattner (coffee shop)
 Schattner (bike rack)
 SEAS (Courtyard)
 Shoemaker Green (1-8)
 Singh Center (courtyard)
 Singh Center (east loading dock)
 Singh Center (Nano roof terrace north)
 Singh Center (nitrogen loading dock)
 Singh Center (roof terrace south)
 Singh Center (west loading dock)
 Solomon Labs (1-4)
 Spruce 38 Garage (Entry/Exit)
 St. Leonard's Court (roof, rear)
 Steinberg Conference Center
 Steinberg Hall-Dietrich Hall (Joe's Café)
 Steinberg Hall-Dietrich Hall (trolley)
 Stellar-Chance Labs (loading dock)
 Stellar-Chance Labs (main entrance)
 Stellar-Chance Labs (roof-rear)
 Stellar-Chance Labs (roof-front)
 Tandem Accelerator Laboratory
 Translational Research Labs, 30th St. (lower level South)
 Translational Research Labs, 30th St. (lower level North)
 Translational Research Labs, 31st St.
 Translational Research Labs, 31st St. (upper level)
 University Meeting & Guesthouse Courtyard
 University Meeting & Guesthouse Parking Lot
 Van Pelt-Dietrich Library (Button)
 Van Pelt-Dietrich Library (Ben Statue)
 Van Pelt-Dietrich Library (Mark's Café 1&2)
 Van Pelt Manor (bike rack)
 VHUP (bike rack)
 VHUP (dog walk 1&2)
 W.E.B. Du Bois House (Bike Rack)
 W.E.B. Du Bois House (facing Radian Plaza)
 Weiss Info Commons (front door)
 Weiss Info Commons (rear door)
 Wharton Academic Research Building Bike Racks
 Wharton EMBA (loading dock)
 Williams Hall (bike racks 1-3)
 WXPN/World Café Live
 WXPN/World Café Live (SW side-lower level)
 1920 Commons (38th & Spruce roof)

Penn Park
 Field 1
 Field 1 (bike rack)
 Field 2
 Field 2 (bike rack)
 Field 2 (NE corner)
 Field 2 (SW corner)
 Field 2 (north bike rack)
 Field 4 (South Street Bridge)
 Lower 30th & Walnut Sts. (1&2)
 Paley Bridge (1&2)
 Paley Bridge (entrance walkway)
 Paley Bridge (walkway to Penn Park)
 Parking Lot (SW corner)
 Parking Lot (NE corner)
 Penn Park (NE corner)

Penn Park (North)
 Penn Park (Plaza)
 Penn Park Drive (entrance)
 River Field
 Ropes Course
 Ropes Course Maintenance Bldgs.
 Softball Stadium (bike racks 1&2)
 Softball Stadium (men's restroom)
 Softball Stadium (women's restroom)
 Tennis Center
 Tennis Center (Field 4)
 Tennis Center (Field 4 walkway)
 Tennis Center (Transit Stop)
 Utility shed
 Walnut St. Bridge (Pedestrian Walkway)
 Walnut St. Bridge (Upper)
 Weave Bridge (Bower Field)
 Weave Bridge (East)
 Weave Bridge (Hollenback)
 Weave Bridge (Penn Park ramp)

Penn Medicine Cameras Hospital of the University of Pennsylvania
 33rd Street (facing South St.)
 33rd Street (facing Civic Center Blvd.)
 34th St. Pedestrian Bridge
 Alley between Pavilion and Penn Museum (facing South St.)
 Convention Ave. (facing Health Sciences Dr.)
 Convention Ave. (facing SEPTA station)
 Convention Ave. (SEPTA station stairs)
 Convention Ave. (stairs to Pavilion walkway)
 Convention Ave. and Civic Center Blvd.
 Convention Ave. and Health Sciences Dr.
 Driveway between Penn Museum and Lot 7
 Dulles Bldg. (bike racks-Spruce St.)
 Emergency Department (driveway 1-4)
 Emergency Department (ambulance entrance/exit)
 Emergency Department (driveway)
 Emergency Department (entrance/exit)
 Gates Bldg. (fire exit door-Spruce St.)
 Lot 7 Parking Garage (driveway entry/exit)
 Lot 7 Parking Garage (entrance from Pavilion walkway)
 Maloney Bldg. (entrance-36th & Spruce Sts.)
 Miller Plaza (adjacent to Stemmler)
 Pavilion (employee entrance)
 Pavilion (main entrance/exit)
 Pavilion (outdoor seating area, corner of Convention Ave.)
 Pavilion (valet driveway/patient & visitor drop-off entrance/exit)
 Pavilion (walkway between Pavilion and Penn Museum)
 Penn Tower/HUP Bridge/Civic Center
 Penn Tower Bridge (Hospital side)
 Ravdin Bldg. (Driveway-Civic Center Blvd.)
 Rhoads Bldg. (1st floor-Hamilton Walk)
 Rhoads Bldg. (1st floor-patio)
 Rhoads Bldg. (basement-dock ramp)
 Rhoads Bldg. (loading docks 1&2)
 Rhoads Bldg. (loading dock ramp)
 Rhoads/Stemmler bike rack
 Security Booth (top of loading dock ramp)
 SEPTA walkway

Spruce St. between 34th & 36th Sts. (facing east)
 Spruce St. between 34th & 36th Sts. (facing west)
 Spruce St. (Founders Bldg. Construction Area)
 Spruce St. (Maloney entrance & morgue driveway)
 Spruce St. (Morgue, Maloney Ground-36th St.)
 Spruce St. (west fire tower door)
 Stair Tower between Penn Museum and Lot 7 from Pavilion walkway
 Stair Tower to loading dock
 White Bldg. courtyard
 White Bldg. (entrance-Spruce St.)

Perelman and Smilow
 3600 CCB Building and Garage
 3600 CCB-LI01 (NW Corner E/W)
 3600 CCB-LI01 (NW Side E/W)
 3600 CCB-LI01 (SW Corner E/W; entrance to Lot 51)
 3600 CCB-LI01 (SW Side E/W; loading Dock)
 3600 CCB-L1 (NE Entrance)
 Civic Center Blvd. at East Service Dr.
 Convention Ave. & Health Science Dr.
 Discovery Walk (between Museum and Pavilion)
 East Service Dr. & Health Sciences Dr.
 East Side of Pavilion
 Emergency Department Driveway
 Entrance to Loading Dock (Health Sciences Dr.)
 Health Sciences Dr. (outside loading dock-1& 2)
 Health Sciences Dr. and Convention Ave (NW)
 Main Entrance
 Main Entrance Driveway along Convention Center
 NE Entrance
 Perelman (front door)
 Perelman (loading dock)
 Perelman Parking garage entrance (Health Sciences Dr.)
 PCAM staff entrance (Convention Ave.)
 Southwest Health Science Drive
 West Service Drive
 West Side of Pavilion

Penn Presbyterian Medical Center
 Advanced Care Canopy (bench)
 Advanced Care Canopy (ED 1&2)
 Advanced Care Canopy (Trauma 1-4)
 Cupp Lobby (entrance)
 Heart and Vascular Pavilion (front entrance)
 Heart and Vascular Pavilion (rear entrance)
 Heart & Vascular Pavilion (rooftop)
 Helipad
 Mutch Bldg. (roof)
 Presby Garage (9 floors)
 Powelton Ave.
 Powelton Ave. (dock)
 Wright/Saunders Bldg. (main entrance)
 Wright/Saunders Bldg. (Powelton Ave. entrance)
 38th St. (Healing Garden)
 38th St. (Advanced Care Building)

3930 Chestnut Street
 39th & Chestnut Streets (intersection)
 Front Main Entrance
 Loading Dock Entrance
 Patio Seating Area
 Parking Lot Bike Rack
 Parking Lot (Front)
 Parking Lot (Rear)
 Substation #4