

May AT PENN

Wherever these symbols appear, more images or audio/video clips are available on our website, www.upenn.edu/almanac/

ACADEMIC CALENDAR

- 2** Final Examinations. Through May 10.
10 Spring Term Ends.
14 Alumni Day.
15 Baccalaureate.
16 Commencement.
23 11-Week Session Classes begin. Session I Classes begin.
30 Memorial Day Observed (no classes).

CHILDREN'S ACTIVITIES

International House

\$5 (ages 2+), free/IHP members. Tickets: <http://ihousephilly.org>

- 14** Family Matinee: *Best of the Fest: Kid Flix II*; ages 9-adult; 2 p.m.
21 All Around This World: *Italian Dancing and Songs*; interactive music workshop for kids; ages infant-7 years & adults; 1 p.m.
Family Matinee: *Tales of the Night*; 2 p.m.

Morris Arboretum

Prices & registration: morrisarboretum.org

- 2** Seeds to Sprouts, *Spring Adventures!*; ages 2-4; 10:30 a.m.
7 Discovery Series: *What do you see?*; learn about the importance of careful observation in science; 11 a.m.-3 p.m.
11 Storytime Nature Yoga; ages 2-4; 10:30 a.m.; register.
13 Storytime at the Arboretum; 10:30 a.m.; Also May 27.
14 How Does Nature Inspire your Creativity? *Kids Art Series*; ages 6-9; 10 a.m.

Penn Museum

Info.: www.penn.museum

- 6** 40 Winks with the Sphinx; sleepover program; ages 6-12; 5:30 p.m.; \$55, \$50/ members; tickets: <http://tinyurl.com/hufy:17> Through May 7, 9 a.m. Also May 20-21.
8 Second Sunday Family Workshop—Destination Egypt: *Amulet Necklace*; work with beads and clay to craft an amulet necklace for Mummies Day; 1-4 p.m.; free w/admission.

CONFERENCES

- 4** Single Cell Biology Symposium; 8:30 a.m.-5:30 p.m.; Arthur H. Rubenstein Auditorium, Smilow Center; register: <http://tinyurl.com/czv2b58> (Penn Program in Single Cell Biology; ITMAT).

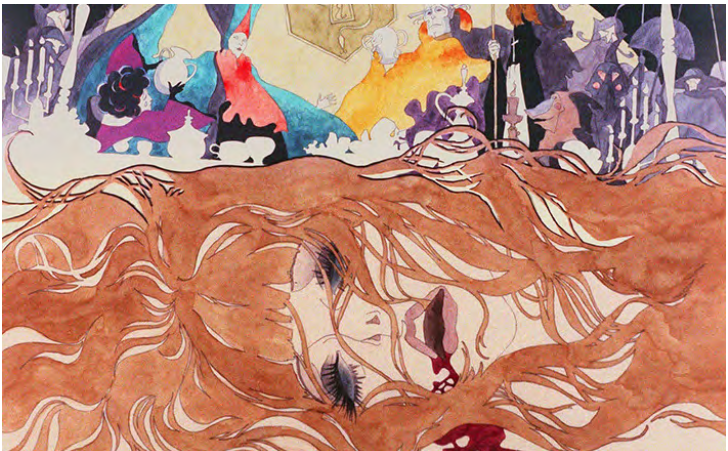
Research Symposium and 37th Annual James M. Cuozzo Memorial Lecture: *Shaping Our Future: The Environment and Reproductive Health*; 1-5 p.m.; auditorium & lobby, BRB II/III; register: www.med.upenn.edu/crrwh/registration.shtml (Center for Research on Reproduction and Women's Health; Department of Obstetrics and Gynecology). See Talks.

- 6** Annual DCC Conference: *Digital Media and the Future(s) of Democracy*; 9 a.m.-5 p.m.; Bodek Lounge, Houston Hall (Penn Program on Democracy, Citizenship and Constitutionalism).

EXHIBITS

Admission Donations and Hours

ARG: Fisher Fine Arts Library; free; hours: www.arthurrossgallery.org/
Burrison Gallery: Inn at Penn; free; Mon.-Fri., 7:30 a.m.-5 p.m.; <http://tinyurl.com/kaevlec>
Esther Klein Gallery: free; Mon.-Sat., 9 a.m.-5 p.m.; <http://estherkleingallery.tumblr.com/>
ICA: free; hours: www.icaphila.org
International House: free; hours: <http://ihousephilly.org/>
Kroiz Gallery, Fisher Fine Arts Library; free; Mon.-Fri., 9 a.m.-4 p.m.; <http://tinyurl.com/hvrlct4>
Morris Arboretum: Mon.-Sun., 10 a.m.-4 p.m.; for prices: www.morrisarboretum.org
Penn Museum: \$15/adults; \$13/



International House is excited to present the newly restored animated film *Belladonna of Sadness* on May 20 at 9 p.m. The 1973 feature film was produced by the Japanese animation studio Mushii Production and distributed by Nippon Herald Films. It follows the story of Jeanne, a peasant woman who is raped which leads to her being accused of witchcraft, and is notable for its graphic and suggestively erotic, violent and psychedelic imagery. See Films.

Morris Arboretum. Ongoing.

Ongoing

Audubon's *Birds of America*; a new page 2nd Wednesday each month; 1st fl., Van Pelt-Dietrich Library.
Human Evolution: The First 200 Million Years; Penn Museum.
IHP: *The First 100 Years*; archival documents; International House.
John Cage: How to Get Started; interactive installation of a rarely heard performance; Slought.
Native American Voices: The People—Here and Now; Penn Museum.
Sacred Spaces: The Photography of Ahmet Ertug; Penn Museum.
Samuel Yellin, *Metaworker: Drawings from the Architectural Archives*; Kroiz Gallery, Architectural Archives.
The History of Nursing as Seen Through the Lens of Art; Carol Ware Lobby, Claire Fagin Hall.

Penn Museum Tours

Weekend tours begin at 1:30 p.m., the Kamin entrance. Free w/admission. For info.: www.penn.museum

FILMS

International House (I-House)

\$9, \$7/students, seniors, free/members. Info.: <http://ihousephilly.org/>
Shows at 7 p.m. unless noted.

- 7** New Work by Lonnie van Brummelen & Siebren de Haan; free; RSVP.
12 Global Pop Shorts; free; RSVP.
14 Lady Snowblood; 5 p.m.
Lady Snowblood: *Love Song of Vengeance*; 8 p.m.
15 Exhumed Films presents: *The Empire Pictures Marathon*; noon; \$30, \$25/members.
17 Precious Places Community History Project Premiere; free; RSVP.
19 The Third Man.
20 I Don't Belong Anywhere: *The Cinema of Chantal Akerman*.
Belladonna of Sadness; 9 p.m.
21 No Home Movie.
23 Philadelphia Jewish Film Festival Closing Night: *Presenting Princess Shaw*; 7:30 p.m.; \$13, \$11/seniors, \$7/ students & members.
Through Indian Eyes: *Native American Cinema*
\$9, \$7/students, seniors, free/members. Info.: <http://ihousephilly.org/>
27 Smoke Signals; preceded by *Carrying Fire*; 7 p.m.
28 Naturally Native; preceded by *Cow Tipping*; 2 p.m.
Rhymes for Young Ghouls; 5 p.m.
Kanehsatake: *270 Years of Resistance*; preceded by *Lye*; 8 p.m.

FITNESS & LEARNING

- 3** Aerobic Cardio Fitness Class; 5:30-6:30 p.m.; Tuesdays and Thursdays; St. Agatha and St. James Church, Parish Hall (enter at back door); first class free, \$8, \$5/students; info.: Carolyn, (267) 251-3842.
5 Penn Knitters; all skill levels are welcome; noon; Penn Women's Center. Thursdays through May 26.
14 Fit to Work; learn exercises to minimize injury & improve performance; 8:30 a.m.; Penn Vet Working Dog Center; prices & register: <http://tinyurl.com/hny3ppv> Through May 15, 4:30 p.m. (Penn Vet).

HR: Healthy Living Workshops

Open to faculty and staff; free.

Register: www.hr.upenn.edu/myhr/

- 3** Osteoporosis Workshop; noon.
4 Gentle Yoga; 11 a.m. Also May 25.
10 Be in the Know Biometric Screenings; 9 a.m.-1 p.m. Also May 23.

HR: Professional and Personal Development Programs

Open to faculty and staff.

Register: <http://knowledgeink.upenn.edu>

- 19** Project Management; 9 a.m.-noon; \$75.

HR: Quality of Worklife Workshops

Open to faculty and staff; free.

Register: www.hr.upenn.edu/myhr/

- 10** Guided Meditation—Take a Breath and Relax; 12:30 p.m. Also May 20.
11 Mindfulness in the Workplace; noon.
17 Current Market Sellers and Refinance Tools; 12:30 p.m.
18 Thinking About Retirement Information Sessions; 11 a.m.
Morris Arboretum
Prices & registration: morrisarboretum.org
4 Mt. Cuba and Winterthur: Explore Two Extraordinary Gardens; 7:45 a.m.
5 Stargazing at the Morris Arboretum; 8:30 p.m.
10 Tai Chi in the Garden; 10:30 a.m.
14 Let's Talk Trees: Understanding and Managing Trees as a Homeowner; 10 a.m.

Make and Take Botanical Impression Tea Towel; 10:30 a.m.

Macro and Close-up Photography; 1 p.m.

- 16** Early Evening Birding at the Arboretum; 4 p.m.
20 A Journey into the Microscopic World of Mosses; 9 a.m.
Floral Imagery in Copper Foil; 10:30 a.m.
21 Horseshoe Crabs and Shore Birds at the Delaware Bay; 7:30 a.m.
The Art of Japanese Ink Painting; 10:30 a.m.



The Summer Garden Railway, landmarks created from natural materials, will be on display at the Morris Arboretum from May 28 through September 5 & weekends through October 10. This year's theme is "Awaken the Senses." Grand Opening activities will take place on Saturday, May 28 from 1-3 p.m. Take part in a kids craft and enjoy free ice cream (while supplies last). See Exhibits.

- 22** Impressionist Painting; 12:30 p.m.
25 Arboretum Architecture and Evening Garden Stroll; 7 p.m.
31 Yoga in the Garden: *Ten Enchanted Evenings*; 7 p.m.

Penn Home Ownership Services

Register: <http://tinyurl.com/ntjqlhf>

- 17** Current Market, Sellers and Refinance Tools; with Lender: Guaranteed Rate; 12:30 p.m.; ste. 1A South, 3624 Market St.

- 24** Spring Housing Fair; Penn Presbyterian Medical Center; 11 a.m.

Penn Libraries Workshops

Including: *0365 Email, Groups and Calendars; Bloomberg 101; Canvas Help; Datasets for Text Mining; Early Books Collective; Introduction to ArcGIS; JMP: Statistical Discovery Software; LinkedIn; Make your own Prezi; Microsoft PowerPoint; Microsoft Word; Python for Text Analysis Research to Go Office Hours; Teaching with Omeka; Zotero Workshop*, and more!
Register for dates, times and locations: <http://tinyurl.com/objjw8zp>

MEETINGS

- 10** WPPSA Elections; open to all weekly paid staff; noon-2 p.m.; rm. 3000, Vagelos IAST Bldg.; RSVP: rvargas@sas.upenn.edu
11 WXPEN Board Policy Meeting; noon; 3025 Walnut Street; open to the public; info: (214) 898-0628.
13 PPSA Board Meeting; open to monthly paid staff; 11 a.m.; conference rm. 300, Claire M. Fagin Hall; RSVP: ppsas@exchange.upenn.edu
18 PPSA Elections; keynote speaker Marybeth Gasman; noon-1 p.m.; Houston Hall; RSVP: ppsas@exchange.upenn.edu

MUSIC

- 4** The Meany-Simmons Flute & Guitar Duo; first Wednesday mid-day concert; 12:15 p.m.; St. Mary's Church (St. Mary's Church).
7 Juan de Marcos & The Afro-Cuban All Stars; a unique ensemble, devoted to the past, present and future of Cuban music; 8 p.m.; Zellerbach Theatre, Annenberg Center; \$20-65; tickets: <http://www.annenbergcenter.org/> (Annenberg Center).

World Cafe Live

Performances daily. For a complete listing, see: <http://philly.worldcafelive.com/>

READINGS AND SIGNINGS

Penn Bookstore

Events Room, second floor.

Info.: www.upenn.edu/bookstore

- 2** African Independence: *How Africa Shapes the World*; Tukufu Zuberi, sociology; 5:30 p.m. (Center for Africana Studies).
3 Suppose an Eyes Poetry Reading; 6 p.m.
14 Hospital Critterz; Stacey Lloyd, alumna ('06); 4 p.m.

SPECIAL EVENTS

- 1** Penn Libraries Study Breaks; take a break from studying for exams by enjoying snacks and participating in fun activities; Van Pelt-Dietrich Library; times: <http://wp.me/P4vaoJ-dT> Through May 8.
11 Reflect and Recite: *An Evening of Performance and Conversation*; Matriarch will mount a new performance, *What Goes Around Comes Around* (2016), considering the importance of reflection as well as sustained reciprocal exchange between artist and audience; 6:30 p.m.; ICA; register: <http://icaphila.org/> (ICA).
14 Student Performing Arts Alumni & Class of 2016 Mixer; graduating seniors will be awarded Platt House honor cords, and student performances; 1-2:30 p.m.; Platt Performing Arts House (Platt).
Morris Arboretum
Info.: www.morrisarboretum.org
7 Early Bird Openings; 8 a.m. Every Saturday through September.
Annual Plant Sale; arboretum experts will give short talks on special selections for your home garden; 10 a.m.-3 p.m.
14 Small Trees Tour; small trees that make a big impact; 11 a.m. Also May 28.
15 Grist Mill Demonstration Day; historic Springfield Mills restored and stone-grinding corn for meal and flour; 1-4 p.m.

Penn Museum

Info.: www.penn.museum

In the Artifact Lab: *Conserving Egyptian Mummies*; part exhibition and part working laboratory; Tuesdays through Fridays, 11:15-11:45 a.m. & 2-2:30 p.m.; Saturdays and Sundays, 12:30-1 p.m. & 3:30-4 p.m.; free w/admission.

Unearthed in the Archives; a trip through Penn Museum's history looking at the interesting and unusual documents being safeguarded in the collection; Fridays, 1:30 p.m. & 2 p.m.; free w/admission.

Mummies and Martinis; after work happy hour in the Egypt (Mummies) Gallery; 6 p.m.; tickets: \$9 (includes one free drink for guests 21 and older).

Penn Vet Working Dog Center

Register: (215) 898-2200.

- 3** Get Lost; public tour; 2-2:45 p.m.
19 Up and Over, Under and Through; public tour; 10-10:45 a.m.

TALKS

- 2** Parasitology Seminar Series; Photini Sinnis, Johns Hopkins; noon; rm. 132, Hill Pavilion (Penn Vet).
3 The Islamic State: *Background and Implications*; Roger Allen, NELC; noon; Hourglass Room, University Club, Inn at Penn; RSVP: (215) 746-5972 (PASEF).
All about EQUIMAGINE™, Robotics-Controlled Imaging; series for horse enthusiasts; New Bolton Center Clinical Team; 6:30 p.m.; Alumni Hall, New Bolton Center; RSVP: (610) 925-6500 (Penn Vet).
4 12 @ 12 Art Talk; Ramey Mize, PennDesign; noon; Arthur Ross Gallery (ARG).
Cuozzo Keynote Lecture; Tracey Woodruff, UC San Francisco; 4 p.m.; auditorium & lobby, BRB II/III; register: www.med.upenn.edu/crrwh/registration.shtml (Center for Research on Reproduction and Women's Health; Department of Obstetrics and Gynecology). See Conferences.
Great Myths and Legends Series: *Warrior Women: Amazons and the Greek Imagination*; Jeremy McInerney, classical studies; 6 p.m.; Penn Museum; \$5/ general, \$2/members, \$10/door; tickets: www.penn.museum/ (Museum).
11 Exhuming the Medici: *Forensic Pathology Uncovers a Dynasty's Secrets*; Gino Fornaciari, University of Pisa; 6 p.m.; Penn Museum (Penn Museum).
13 Brown Bag Lunch; Charlotte Ickes, Whitney-Lauder Curatorial Fellow; noon; ICA; register: <http://icaphila.org/> (ICA).
26 Looking at State-Society Relations in China through the Lens of Homeowners' Association Movements; Lei Chen, City University of Hong Kong; noon; CSCC Conference Room (rm. 345), Fisher-Bennett Hall (Center for East Asian Studies; CSCC; Center for Asian Law).



Open the May 2016 AT PENN Calendar with this QR code.

Almanac

3910 Chestnut St., 2nd Floor
Philadelphia, PA 19104-3111
(215) 898-5274 or 5275 FAX (215) 898-9137
Email: almanac@upenn.edu
URL: www.upenn.edu/almanac

Unless otherwise noted, all events are open to the general public as well as to members of the University. For building locations, call (215) 898-5000, or see www.facilities.upenn.edu or the University's website, www.upenn.edu A phone number normally means tickets, reservations or registration required.

Almanac carries an Update with additions, changes & cancellations if received by Monday at noon for the following week's issue. University members may send notices for the Update or Summer AT PENN calendar.

Events on this calendar are subject to change. More information can be found on the sponsoring department's website. Sponsors are listed in parentheses.

Experience tradition, learning and fun at this year’s Alumni Weekend from May 13 through May 16. The Penn Community is invited to participate in the many seminars, open houses, tours and celebrations.

Some events require RSVP to Penn Alumni. For details and to RSVP, see <http://penn.reunioniq.com/index.cfm/event/identity/reunionid/16>



Open Houses, Tours and Receptions

Friday, May 13

Sweeten Hospitality Suite; stop in, peruse old yearbooks and memorabilia, and relax with light refreshments; 9 a.m.-6 p.m.; E. Craig Sweeten Alumni House. *Also May 14*, 9 a.m.-6 p.m. *Also May 15-16*, 9 a.m.-3 p.m.

Penn Computer Connection; the latest deals on the best technology; 8:30 a.m.-6:30 p.m.; 2nd floor, Penn Bookstore. *Also May 14-15*, 10 a.m.-5 p.m.

The Golden Age of King Midas; discover what was behind the legendary story of King Midas and his Golden Touch at this exclusive exhibition; 10 a.m.-5 p.m.; Penn Museum. *Through May 15*.

Gallery Self-Guided Tours at the Penn Libraries: Across the Spectrum: Color in American Fine and Private Press Books, 1890-2015 & Common Press at 10—Prints, Books, Art: Conversations on the Future of Printmaking in the College Curriculum; 11 a.m.-5 p.m.; Van Pelt-Dietrich Library. *Through May 16*.

Rodney McMillian: The Black Show; sculptures, paintings, room-sized constructions, videos and performances embody our social fabric in patterns cut by class, economic status, culture, race, gender and history; 11 a.m.-5 p.m.; ICA. *Through May 16*.

Louise Fishman; brushed, scraped, layered and smeared, the dynamic surfaces of her paintings radiate with energy; 11 a.m.-5 p.m.; ICA. *Through May 16*.

Penn Then and Now Campus Tour; enjoy a walking tour of campus led by a Penn Traditions student leader; 11 a.m.-noon; meet at the LOVE statue, Locust Walk; register: <http://tinyurl.com/oul7sjl> *Also 2:30-3:30 p.m. & May 14*, 3-4 p.m.

Penn Dental Luminary Society Luncheon; in recognition of the distinction and achievement of Penn Dental Medicine alumni celebrating their 50th reunion and beyond; all alumni from the classes of 1966 and prior; noon-2 p.m.; Harvest Seasonal Grill, 200 S 40th St; register: www.dental.upenn.edu/AW2016

Penn Dental Hygiene Alumni Association Luncheon; 12:30-2 p.m.; Robert Schattner Center; register: www.dental.upenn.edu/AW2016

Penn Medicine—Lunch and Learn: Meet Our Future Leaders; get to know Penn Medicine’s future physicians: current students who will share their thoughts on life at the School; 1-2:15 p.m.; atrium, 5th floor, Henry A. Jordan M’62 Medical Education Center; \$30; register: www.alumni.upenn.edu/MAW2016

The Barnes Foundation Tour; a 30-minute presentation from a docent; audio self-tour and shuttle from campus; 1:30-3 p.m.; 2025 Benjamin Franklin Parkway; \$30; register: (215) 898-6421

Tour Penn’s Architectural Masterpieces; join David Hollenberg, University Architect, for a walking tour of the architectural masterworks on campus; 2-3:30 p.m.; starts at College Hall; register: <http://tinyurl.com/oul7sjl>

Gallery Hop; there will be a director/curator at each site to discuss each exhibition; hors d’oeuvres and dessert at the ICA; 3-5:30 p.m.; starts at Arthur Ross Gallery; register: <http://tinyurl.com/oul7sjl>

Penn Medicine: Tours of the Henry A. Jordan M’62 Medical Education Center; student ambassadors on hand to take alumni through the new Medical Education Center. Self-guided tour maps and information are also available; 3:45-5:30 p.m.; fl. 5, Henry A. Jordan M’62 Medical Education Center; register: www.alumni.upenn.edu/MAW2016

The Barnes Foundation Tour; a 30-minute presentation from a docent; audio self-tour and shuttle from campus; 1:30-3 p.m.; 2025 Benjamin Franklin Parkway; \$30; register: (215) 898-6421

Tour Penn’s Architectural Masterpieces; join David Hollenberg, University Architect, for a walking tour of the architectural masterworks on campus; 2-3:30 p.m.; starts at College Hall; register: <http://tinyurl.com/oul7sjl>

Gallery Hop; there will be a director/curator at each site to discuss each exhibition; hors d’oeuvres and dessert at the ICA; 3-5:30 p.m.; starts at Arthur Ross Gallery; register: <http://tinyurl.com/oul7sjl>

Penn Medicine: Tours of the Henry A. Jordan M’62 Medical Education Center; student ambassadors on hand to take alumni through the new Medical Education Center. Self-guided tour maps and information are also available; 3:45-5:30 p.m.; fl. 5, Henry A. Jordan M’62 Medical Education Center; register: www.alumni.upenn.edu/MAW2016

The Barnes Foundation Tour; a 30-minute presentation from a docent; audio self-tour and shuttle from campus; 1:30-3 p.m.; 2025 Benjamin Franklin Parkway; \$30; register: (215) 898-6421

Tour Penn’s Architectural Masterpieces; join David Hollenberg, University Architect, for a walking tour of the architectural masterworks on campus; 2-3:30 p.m.; starts at College Hall; register: <http://tinyurl.com/oul7sjl>

Gallery Hop; there will be a director/curator at each site to discuss each exhibition; hors d’oeuvres and dessert at the ICA; 3-5:30 p.m.; starts at Arthur Ross Gallery; register: <http://tinyurl.com/oul7sjl>

Penn Medicine: Tours of the Henry A. Jordan M’62 Medical Education Center; student ambassadors on hand to take alumni through the new Medical Education Center. Self-guided tour maps and information are also available; 3:45-5:30 p.m.; fl. 5, Henry A. Jordan M’62 Medical Education Center; register: www.alumni.upenn.edu/MAW2016

The Barnes Foundation Tour; a 30-minute presentation from a docent; audio self-tour and shuttle from campus; 1:30-3 p.m.; 2025 Benjamin Franklin Parkway; \$30; register: (215) 898-6421

Tour Penn’s Architectural Masterpieces; join David Hollenberg, University Architect, for a walking tour of the architectural masterworks on campus; 2-3:30 p.m.; starts at College Hall; register: <http://tinyurl.com/oul7sjl>

Gallery Hop; there will be a director/curator at each site to discuss each exhibition; hors d’oeuvres and dessert at the ICA; 3-5:30 p.m.; starts at Arthur Ross Gallery; register: <http://tinyurl.com/oul7sjl>

Penn Medicine: Tours of the Henry A. Jordan M’62 Medical Education Center; student ambassadors on hand to take alumni through the new Medical Education Center. Self-guided tour maps and information are also available; 3:45-5:30 p.m.; fl. 5, Henry A. Jordan M’62 Medical Education Center; register: www.alumni.upenn.edu/MAW2016

The Barnes Foundation Tour; a 30-minute presentation from a docent; audio self-tour and shuttle from campus; 1:30-3 p.m.; 2025 Benjamin Franklin Parkway; \$30; register: (215) 898-6421

Tour Penn’s Architectural Masterpieces; join David Hollenberg, University Architect, for a walking tour of the architectural masterworks on campus; 2-3:30 p.m.; starts at College Hall; register: <http://tinyurl.com/oul7sjl>

Gallery Hop; there will be a director/curator at each site to discuss each exhibition; hors d’oeuvres and dessert at the ICA; 3-5:30 p.m.; starts at Arthur Ross Gallery; register: <http://tinyurl.com/oul7sjl>

Penn Medicine: Tours of the Henry A. Jordan M’62 Medical Education Center; student ambassadors on hand to take alumni through the new Medical Education Center. Self-guided tour maps and information are also available; 3:45-5:30 p.m.; fl. 5, Henry A. Jordan M’62 Medical Education Center; register: www.alumni.upenn.edu/MAW2016

The Barnes Foundation Tour; a 30-minute presentation from a docent; audio self-tour and shuttle from campus; 1:30-3 p.m.; 2025 Benjamin Franklin Parkway; \$30; register: (215) 898-6421

Tour Penn’s Architectural Masterpieces; join David Hollenberg, University Architect, for a walking tour of the architectural masterworks on campus; 2-3:30 p.m.; starts at College Hall; register: <http://tinyurl.com/oul7sjl>

Gallery Hop; there will be a director/curator at each site to discuss each exhibition; hors d’oeuvres and dessert at the ICA; 3-5:30 p.m.; starts at Arthur Ross Gallery; register: <http://tinyurl.com/oul7sjl>

Penn Medicine: Tours of the Henry A. Jordan M’62 Medical Education Center; student ambassadors on hand to take alumni through the new Medical Education Center. Self-guided tour maps and information are also available; 3:45-5:30 p.m.; fl. 5, Henry A. Jordan M’62 Medical Education Center; register: www.alumni.upenn.edu/MAW2016

The Barnes Foundation Tour; a 30-minute presentation from a docent; audio self-tour and shuttle from campus; 1:30-3 p.m.; 2025 Benjamin Franklin Parkway; \$30; register: (215) 898-6421

Tour Penn’s Architectural Masterpieces; join David Hollenberg, University Architect, for a walking tour of the architectural masterworks on campus; 2-3:30 p.m.; starts at College Hall; register: <http://tinyurl.com/oul7sjl>

Gallery Hop; there will be a director/curator at each site to discuss each exhibition; hors d’oeuvres and dessert at the ICA; 3-5:30 p.m.; starts at Arthur Ross Gallery; register: <http://tinyurl.com/oul7sjl>

Penn Medicine: Tours of the Henry A. Jordan M’62 Medical Education Center; student ambassadors on hand to take alumni through the new Medical Education Center. Self-guided tour maps and information are also available; 3:45-5:30 p.m.; fl. 5, Henry A. Jordan M’62 Medical Education Center; register: www.alumni.upenn.edu/MAW2016

The Barnes Foundation Tour; a 30-minute presentation from a docent; audio self-tour and shuttle from campus; 1:30-3 p.m.; 2025 Benjamin Franklin Parkway; \$30; register: (215) 898-6421

Tour Penn’s Architectural Masterpieces; join David Hollenberg, University Architect, for a walking tour of the architectural masterworks on campus; 2-3:30 p.m.; starts at College Hall; register: <http://tinyurl.com/oul7sjl>

Gallery Hop; there will be a director/curator at each site to discuss each exhibition; hors d’oeuvres and dessert at the ICA; 3-5:30 p.m.; starts at Arthur Ross Gallery; register: <http://tinyurl.com/oul7sjl>

Penn Medicine: Tours of the Henry A. Jordan M’62 Medical Education Center; student ambassadors on hand to take alumni through the new Medical Education Center. Self-guided tour maps and information are also available; 3:45-5:30 p.m.; fl. 5, Henry A. Jordan M’62 Medical Education Center; register: www.alumni.upenn.edu/MAW2016

The Barnes Foundation Tour; a 30-minute presentation from a docent; audio self-tour and shuttle from campus; 1:30-3 p.m.; 2025 Benjamin Franklin Parkway; \$30; register: (215) 898-6421

Tour Penn’s Architectural Masterpieces; join David Hollenberg, University Architect, for a walking tour of the architectural masterworks on campus; 2-3:30 p.m.; starts at College Hall; register: <http://tinyurl.com/oul7sjl>

Gallery Hop; there will be a director/curator at each site to discuss each exhibition; hors d’oeuvres and dessert at the ICA; 3-5:30 p.m.; starts at Arthur Ross Gallery; register: <http://tinyurl.com/oul7sjl>

Penn Medicine: Tours of the Henry A. Jordan M’62 Medical Education Center; student ambassadors on hand to take alumni through the new Medical Education Center. Self-guided tour maps and information are also available; 3:45-5:30 p.m.; fl. 5, Henry A. Jordan M’62 Medical Education Center; register: www.alumni.upenn.edu/MAW2016

The Barnes Foundation Tour; a 30-minute presentation from a docent; audio self-tour and shuttle from campus; 1:30-3 p.m.; 2025 Benjamin Franklin Parkway; \$30; register: (215) 898-6421

Tour Penn’s Architectural Masterpieces; join David Hollenberg, University Architect, for a walking tour of the architectural masterworks on campus; 2-3:30 p.m.; starts at College Hall; register: <http://tinyurl.com/oul7sjl>

Gallery Hop; there will be a director/curator at each site to discuss each exhibition; hors d’oeuvres and dessert at the ICA; 3-5:30 p.m.; starts at Arthur Ross Gallery; register: <http://tinyurl.com/oul7sjl>

Penn Medicine: Tours of the Henry A. Jordan M’62 Medical Education Center; student ambassadors on hand to take alumni through the new Medical Education Center. Self-guided tour maps and information are also available; 3:45-5:30 p.m.; fl. 5, Henry A. Jordan M’62 Medical Education Center; register: www.alumni.upenn.edu/MAW2016

Casa Latina Brunch; a brunch for all visiting Latin@ alumni; 10:30 a.m.-12:30 p.m.; lower level, The ARCH Bldg.

PennDesign Alumni Lunch; PennDesign alumni from across the years are invited to join one another for a festive lunch under the tent; noon-1 p.m.; plaza, Meyerson Hall.

Open House at KWH; celebrate 20 years of innovation! Renew acquaintances or get to know this home for writers by joining members of the Writers House community for informal conversation, coffee and light refreshments; noon-3 p.m.; Kelly Writers House; RSVP: rsvp@writing.upenn.edu

Treasures of Turkish Culture and Cuisine; enjoy coffee and Turkish baklava with C. Brian Rose, exhibition curator and director of excavations at Gordion, following the tour; 2 p.m.; Kamin Entrance, Penn Museum; \$25 per person; register: <http://tinyurl.com/oul7sjl>

Friars Senior Society Alumni Day Reception; raise a glass to Friars young and old, and welcome the soon-to-be new Friar alums from the class of 2016; 2:30-4:30 p.m.; POD, 3636 Sansom Street; register: pennfriars@aol.com

Huntsman Program Alumni Gathering; join fellow Huntsman Alumni for a reception and photo shoot celebrating the Huntsman Classes of 2011, 2006 and 2001; 3-7 p.m.; Huntsman Program Lounge, 3732 Locust Walk.

The Penn Architectural Archives with PennGALA; Bill Whitaker, curator and collections manager at Penn Design will lead the conversation on the works of Barton Myers on display; 4-6 p.m.; Kroiz Gallery, Fisher Fine Arts Library.

The Penn Architectural Archives with PennGALA; Bill Whitaker, curator and collections manager at Penn Design will lead the conversation on the works of Barton Myers on display; 4-6 p.m.; Kroiz Gallery, Fisher Fine Arts Library.

The Penn Architectural Archives with PennGALA; Bill Whitaker, curator and collections manager at Penn Design will lead the conversation on the works of Barton Myers on display; 4-6 p.m.; Kroiz Gallery, Fisher Fine Arts Library.

The Penn Architectural Archives with PennGALA; Bill Whitaker, curator and collections manager at Penn Design will lead the conversation on the works of Barton Myers on display; 4-6 p.m.; Kroiz Gallery, Fisher Fine Arts Library.

The Penn Architectural Archives with PennGALA; Bill Whitaker, curator and collections manager at Penn Design will lead the conversation on the works of Barton Myers on display; 4-6 p.m.; Kroiz Gallery, Fisher Fine Arts Library.

The Penn Architectural Archives with PennGALA; Bill Whitaker, curator and collections manager at Penn Design will lead the conversation on the works of Barton Myers on display; 4-6 p.m.; Kroiz Gallery, Fisher Fine Arts Library.

The Penn Architectural Archives with PennGALA; Bill Whitaker, curator and collections manager at Penn Design will lead the conversation on the works of Barton Myers on display; 4-6 p.m.; Kroiz Gallery, Fisher Fine Arts Library.

The Penn Architectural Archives with PennGALA; Bill Whitaker, curator and collections manager at Penn Design will lead the conversation on the works of Barton Myers on display; 4-6 p.m.; Kroiz Gallery, Fisher Fine Arts Library.

The Penn Architectural Archives with PennGALA; Bill Whitaker, curator and collections manager at Penn Design will lead the conversation on the works of Barton Myers on display; 4-6 p.m.; Kroiz Gallery, Fisher Fine Arts Library.

The Penn Architectural Archives with PennGALA; Bill Whitaker, curator and collections manager at Penn Design will lead the conversation on the works of Barton Myers on display; 4-6 p.m.; Kroiz Gallery, Fisher Fine Arts Library.

The Penn Architectural Archives with PennGALA; Bill Whitaker, curator and collections manager at Penn Design will lead the conversation on the works of Barton Myers on display; 4-6 p.m.; Kroiz Gallery, Fisher Fine Arts Library.

The Penn Architectural Archives with PennGALA; Bill Whitaker, curator and collections manager at Penn Design will lead the conversation on the works of Barton Myers on display; 4-6 p.m.; Kroiz Gallery, Fisher Fine Arts Library.

The Penn Architectural Archives with PennGALA; Bill Whitaker, curator and collections manager at Penn Design will lead the conversation on the works of Barton Myers on display; 4-6 p.m.; Kroiz Gallery, Fisher Fine Arts Library.

The Penn Architectural Archives with PennGALA; Bill Whitaker, curator and collections manager at Penn Design will lead the conversation on the works of Barton Myers on display; 4-6 p.m.; Kroiz Gallery, Fisher Fine Arts Library.

The Penn Architectural Archives with PennGALA; Bill Whitaker, curator and collections manager at Penn Design will lead the conversation on the works of Barton Myers on display; 4-6 p.m.; Kroiz Gallery, Fisher Fine Arts Library.

The Penn Architectural Archives with PennGALA; Bill Whitaker, curator and collections manager at Penn Design will lead the conversation on the works of Barton Myers on display; 4-6 p.m.; Kroiz Gallery, Fisher Fine Arts Library.

The Penn Architectural Archives with PennGALA; Bill Whitaker, curator and collections manager at Penn Design will lead the conversation on the works of Barton Myers on display; 4-6 p.m.; Kroiz Gallery, Fisher Fine Arts Library.

The Penn Architectural Archives with PennGALA; Bill Whitaker, curator and collections manager at Penn Design will lead the conversation on the works of Barton Myers on display; 4-6 p.m.; Kroiz Gallery, Fisher Fine Arts Library.

The Penn Architectural Archives with PennGALA; Bill Whitaker, curator and collections manager at Penn Design will lead the conversation on the works of Barton Myers on display; 4-6 p.m.; Kroiz Gallery, Fisher Fine Arts Library.

The Penn Architectural Archives with PennGALA; Bill Whitaker, curator and collections manager at Penn Design will lead the conversation on the works of Barton Myers on display; 4-6 p.m.; Kroiz Gallery, Fisher Fine Arts Library.

The Penn Architectural Archives with PennGALA; Bill Whitaker, curator and collections manager at Penn Design will lead the conversation on the works of Barton Myers on display; 4-6 p.m.; Kroiz Gallery, Fisher Fine Arts Library.

The Penn Architectural Archives with PennGALA; Bill Whitaker, curator and collections manager at Penn Design will lead the conversation on the works of Barton Myers on display; 4-6 p.m.; Kroiz Gallery, Fisher Fine Arts Library.

The Penn Architectural Archives with PennGALA; Bill Whitaker, curator and collections manager at Penn Design will lead the conversation on the works of Barton Myers on display; 4-6 p.m.; Kroiz Gallery, Fisher Fine Arts Library.

The Penn Architectural Archives with PennGALA; Bill Whitaker, curator and collections manager at Penn Design will lead the conversation on the works of Barton Myers on display; 4-6 p.m.; Kroiz Gallery, Fisher Fine Arts Library.

The Penn Architectural Archives with PennGALA; Bill Whitaker, curator and collections manager at Penn Design will lead the conversation on the works of Barton Myers on display; 4-6 p.m.; Kroiz Gallery, Fisher Fine Arts Library.

The Penn Architectural Archives with PennGALA; Bill Whitaker, curator and collections manager at Penn Design will lead the conversation on the works of Barton Myers on display; 4-6 p.m.; Kroiz Gallery, Fisher Fine Arts Library.

The Penn Architectural Archives with PennGALA; Bill Whitaker, curator and collections manager at Penn Design will lead the conversation on the works of Barton Myers on display; 4-6 p.m.; Kroiz Gallery, Fisher Fine Arts Library.

The Penn Architectural Archives with PennGALA; Bill Whitaker, curator and collections manager at Penn Design will lead the conversation on the works of Barton Myers on display; 4-6 p.m.; Kroiz Gallery, Fisher Fine Arts Library.

The Penn Architectural Archives with PennGALA; Bill Whitaker, curator and collections manager at Penn Design will lead the conversation on the works of Barton Myers on display; 4-6 p.m.; Kroiz Gallery, Fisher Fine Arts Library.

The Penn Architectural Archives with PennGALA; Bill Whitaker, curator and collections manager at Penn Design will lead the conversation on the works of Barton Myers on display; 4-6 p.m.; Kroiz Gallery, Fisher Fine Arts Library.

panelists Philip Cooper, D’76, and Thomas Snyder, D’71, WG’74; noon-2 p.m.; Robert Schattner Center; register: www.dental.upenn.edu/AW2016

Reaching Across the Generation Gaps—Building Bridges Between Age Groups; methods of communication are changing faster than ever before, creating larger gaps between generations. Learn how to bridge gaps with Jon Greenawalt, C’61, G’63 & Michael Nakkula, GSE; 12:15-1:15 p.m.; rm. G17, Claudia Cohen Hall.

Wharton MBA Reunion Weekend: Wharton Town Hall; featuring Dean Geoffrey Garrett; 1:30-3 p.m.; Ambani Auditorium, Jon M. Huntsman Hall, register: <http://reunion-weekend.wharton.upenn.edu/>

Changes and Advances in Health Care; learn from Penn’s leading experts in health care, geriatrics and gerontology; 2:15-3:15 p.m.; rm. G17, Claudia Cohen Hall (LDI & Penn Alumni Education).

The Samuel I. and Hilda B. Shames Lecture Series: Oral Vaccines and Biopharmaceuticals; Henry Daniell, Penn Dental; outside-the-box thinking has turned lettuce leaves into drug-delivery systems; 2:30-3:30 p.m.; Robert Schattner Center; register: www.dental.upenn.edu/AW2016

Penn Medicine: Keynote Discussion; distinguished alumnus and Nobel laureate Michael Brown (C’62, N’66, HON’86) returns to his alma mater and joins Dean J. Larry Jameson for a special conversation; 2:30-3:30 p.m.; Law Auditorium, Henry A. Jordan M’62 Medical Education Center; register: www.alumni.upenn.edu/MAW2016

What’s Next in Tech; Vijay Kumar, Nemirovsky Family Dean of Penn Engineering, and Howard Anderson, C’66, discussing how future advancements in technology will change your life, both professionally and personally; 3:30-4:30 p.m.; Terrace Room, Claudia Cohen Hall (Class of 1966 & Alumni Education).

Saturday, May 14

Penn Athletics Coaches Panel; hear from several of Penn’s men’s and women’s coaches about challenges and opportunities in their respective sports; athletes celebrating their 50th milestone reunion will be recognized; 8:30-10:30 a.m.; Class of ‘49 Auditorium, Houston Hall (Class of 1966).

Penn Alumni Board of Directors Meeting; hear about the board’s activities from guest speaker Dean J. Larry Jameson; continental breakfast begins at 8:30 a.m.; 9-10:15 a.m.; rm. 200, College Hall.

Navigating College Admissions; Penn’s Dean of Admissions, Eric J. Furda (C’87) will discuss the college admissions process generally and Penn’s admissions process for legacy candidates; 9-10:30 a.m.; rm. G17, Claudia Cohen Hall.

Kitzmiller v. Dover Area School District, Ten Years Later: The Evolution of Public Understanding of Science; panel including Michael Weisberg, philosophy & Eric Rothschild (L’93) looks back at the case and its aftermath; 9:30-10:30 a.m.; rm. 245A, Bernard Segal Moot Court Room, Silverman Hall (SAS; Penn Law; Alumni Education).

Penn Medicine: Mini Talks; a spin-off of Penn’s 60-Second Lecture series, these talks will feature alumni speakers covering a variety of possible topics; 9:45-11:45 a.m.; Law Auditorium, Henry A. Jordan M’62 Medical Education Center.

Transforming Health and Health Care: Why Nursing Matters; increased technology, improved access to healthcare and the growing complexities of patient care provide unique challenges and opportunities to nursing and nurses today. Dean Villarruel will share her vision for Nursing and Penn Nursing’s leadership role in the 21st century; 10-11:30 a.m.; Claire M. Fagin Hall.

Coffee and Conversation; Vijay Kumar, Nemirovsky Family Dean, Penn Engineering; 10:30-11:30 a.m.; Krishna P. Singh Center for Nanotechnology.

Conversation with President Amy Gutmann; her annual state of the University report with the opportunity for questions; 10:30-11:15 a.m.; Zellerbach Theatre, Annenberg Center; register: <http://reunion-weekend.wharton.upenn.edu/>

60-Second Slam!; a roundup of our famous 60-Second Lectures, and see Penn Arts and Sciences’ foremost faculty and students prove that a world of knowledge can be condensed into just one minute; 11 a.m.-noon; Rose Recital Hall, Fisher-Bennett Hall.

Wharton MBA Reunion Weekend: Estate Planning Seminar; Marcie Merz, associate general counsel; 11:45 a.m.-1 p.m.; Jon M. Huntsman Hall; register: <http://reunion-weekend.wharton.upenn.edu/>

20 Stories about 20 Years of KWH; speaking about the history and impact of the Kelly Writers House and its community featuring former program coordinators and directors; 3-6 p.m.; Kelly Writers House; RSVP: (215) 746-POEM.

Association of Native Alumni Conversation with Penn Admissions Dean Eric Furda; learn about Penn’s Native recruitment initiatives; 4-6 p.m.; Class of ‘47 Room, Houston Hall.

Class of 1971 Environmental Seminar and Earth Day Update; featuring some cool green video and three distinguished speakers from the Class of 1971; 4-6 p.m.; Ben Franklin Room, Houston Hall.

The Netter Center for Community Partnerships Presents: Perspectives from Alumni on University-Community Engagement; the many aspects and lasting



Protective amulets, incantation bowls, curse tablets, powerful rings, magical stones and anatomical votives—these objects and more are featured in *Magic in the Ancient World* at the Penn Museum on display now through April 30, 2017. See Exhibits.

impact of Penn’s local engagement with its West Philadelphia community; 4:45-6 p.m.; Golkin Room, Houston Hall (Class of 1991, 1996, 2001 & 2006).

Other Events

Friday, May 13

Alumni PennCard and Souvenir Kids Card; have your photo taken and get your Alumni PennCard (\$25) and Souvenir Kids Card; 8:30 a.m.-5 p.m.; fl. 2, Penn Bookstore. *Also May 14*, 10 a.m.-2 p.m.

Alumni Community Service Project—Book Drive; Netter Center for Community Partnerships and Bags of Books will be donating all collected books to West Philadelphia students (pre-K through 12) at university-assisted community schools; drop off locations: E. Craig Sweeten Alumni House & The Netter Center. *Through May 16*.

Sculpture Scavenger Hunt; discover Penn’s outdoor sculptures through a fun and informative scavenger hunt; 3:30-4:30 p.m.; starts at Arthur Ross Gallery; info.: <http://artcollection.upenn.edu/>

Words with Friends; Class of 1991 alumni authors from NY Times bestsellers to debut novelists—and Zack Lesser, English, for a lively conversation about the latest trends in publishing; 3:30-4:30 p.m.; Ben Franklin Room, Houston Hall (Class of 1991; Alumni Education).

Penn Nursing Celebrating Excellence: Student, Alumni and Faculty Awards; annual Awards program honors the varied achievements of our community members; 4-5:30 p.m.; Ann L. Roy Auditorium, Claire M. Fagin Hall.

Penn Dental Library Reveal; join the official reveal and celebration of the historic grandeur of the Library and enjoy a special tour of the Evans art collection; 4-5 p.m.; Robert Schattner Center; register: www.dental.upenn.edu/AW2016

Penn GSE Education Alumni Awards and Celebration of Teachers; recognizing the work of passionate alumni with the Education Alumni Awards and Celebration of Teachers; 4:30-6:30 p.m.; the Courtyard, 37th & Locust Walk; register: www.gse.upenn.edu/alumni/events

Penn Dental Medicine Alumni Celebration and Awards Presentation; celebrating all Penn Dental classes as well as honoring this year’s recipients of the Thomas Evans Achievement Award; 5-7 p.m.; Robert Schattner Center; register: www.dental.upenn.edu/AW2016

Kelly Writers House: 20th Anniversary Kick-off Party; a casual celebration of this lively and innovative home for writers and creative people, with plenty of food, KWH alumni and friends, and opportunities to reminisce; 5-8 p.m.; Kelly Writers House; RSVP: (215) 746-POEM.

Penn Swimming and Diving Alumni Weekend Reception; all Penn Swimming and Diving alumni, parents and fans are invited to attend this reception to reconnect and celebrate the Penn Swimming and Diving program; 5-8 p.m.; City Tap House, 3925 Walnut Street; \$10-20.

PennGALA (LGBT Alumni) Alumni Weekend Happy Hour; light appetizers and drink specials will be available; 5:30-7:30 p.m.; Doc Magrogan’s Oyster House, 3432 Sansom Street.

Family Primary Care NP Program Reunion; join us to reconnect, network and learn about today’s program, with wine and hors d’oeuvres. Special guests include Program Director Ann O’Sullivan and Dean Antonia Villarruel; 6:30-9 p.m.; Claire M. Fagin Hall; \$40-60.

Penn Dental Medicine Reunion Class Celebrations; 7 p.m.; various locations; refer to the Penn Dental Medicine Alumni Weekend website for all class celebrations at www.dental.upenn.edu/AW2016

Penn Dental PASS 30th Anniversary Dinner; all graduates of Penn Dental Medicine’s Program for Advance Standing Students are invited to celebrate the 30th anniversary of the program; 7-9 p.m.; location TBA; register: www.dental.upenn.edu/AW2016

FranklinFest; All-Alumni Party; join classmates for a night with drinks, light fare, and live entertainment; 7-11 p.m.; College Green.

yPenn Highball; celebrate the Class of 2016’s transition to alumni status with drinks, food and all the glow jewelry you can handle; 9 p.m.-midnight; Hall of Flags, Houston Hall; \$10.

Saturday, May 14

Legacy Breakfast: Celebrating 130 Years of Nursing Education at Penn; Dean Villarruel hosts the annual Legacy Breakfast and conversation for Penn Nursing Legacy alumni (25th-50th+ reunions); 8:30-9:30 a.m.; lobby, Claire M. Fagin Hall.

Quaker Trot; non-competitive and untimed as alumni runners and walkers of every speed are invited to follow a 1.5-mile loop around Penn Park. Prizes will

be awarded