

# Almanac

UNIVERSITY OF PENNSYLVANIA

Tuesday  
April 22, 2025  
Volume 71 Number 32  
[www.upenn.edu/almanac](http://www.upenn.edu/almanac)

## 2025 Recipients of the President's Engagement Prize and the President's Innovation and Sustainability Prizes Announced

Four prize-winning teams will design and undertake post-graduation projects that make a positive, lasting difference in the world.

On April 17, University of Pennsylvania President J. Larry Jameson announced the recipients of the 2025 President's Engagement, Innovation, and Sustainability Prizes. Awarded annually, the prizes empower Penn undergraduate students to design and undertake post-graduation projects that make a positive, lasting difference in the world. Since the establishment of the President's Prizes, generous philanthropic support has ensured that each prize-winning project receives \$100,000, as well as a \$50,000 living stipend per team member and that each team collaborates with a Penn faculty or staff mentor.

Five Penn seniors have been named recipients of the 2025 President's Engagement Prize. They are Ejun Mary Hong and Jack Nicholas Roney for PIXEL, and Imani Nkrumah Ardayfio, Inaya Zaman, and Rashmi Acharya for

Nourish to Flourish. Three Penn seniors have received the President's Innovation Prize: Melanie Herbert, Nami Lindquist, and Alexandra Popescu for Sync Labs. Senior Piotr Lazarek has received the President's Sustainability Prize, a sub-category of the President's Innovation Prize, for Nirby.

"This year's recipients of the President's Prizes and their prize-winning projects exemplify Penn's values and strategic priorities and the highest ideals of higher education," said President Jameson. "PIXEL, Nourish to Flourish, Sync Labs, and Nirby are interdisciplinary and innovative in their approach—engaging in West Philadelphia to inspire creativity and to introduce nutritional programs improving health and addressing hunger; innovating to enhance eldercare through AI; and embracing a sustainable approach to farmland soil management. On behalf of the University, I congratulate this year's winners."

*(continued on page 3)*

## Penn Medicine Breaks Ground Penn Medicine Montgomeryville, a Multi-Specialty Outpatient Center in Montgomery County

On April 11, Penn Medicine leaders and regional community representatives broke ground on a four-story, 162,000-square-foot multispecialty outpatient facility that will expand options for patients to receive advanced care in Montgomery and Bucks counties.

Set to open in late 2027, Penn Medicine Montgomeryville will provide comprehensive cancer care, including radiation oncology services and chemotherapy in conjunction with the Abramson Cancer Center. Additional services will include primary care, heart and vascular care, orthopaedic and neuroscience care, and specialized services in women's health and surgical consultations.

Penn Medicine physicians and other clinical staff will work together to simplify access for patients needing multiple specialists in one visit, making it easier for more patients to receive more care closer to home. Support services in the new facility will include advanced imaging capabilities, laboratory services, infusion therapy, and a retail pharmacy.

"By bringing advanced, lifesaving services closer to patients, especially those undergoing cancer therapy that can last for months, we're not just enhancing accessibility—we're transforming the entire treatment journey," said Kevin B. Mahoney, CEO of the University of Pennsylvania Health System. "Penn Medicine Montgomeryville will make getting care easier for patients, while reimagining how treatments should be delivered and experienced."

Located at 200 DeKalb Pike in North Wales, Montgomery County, the center will offer conve-



nient accessibility via multiple major thoroughfares, including Routes 202 and 309, which connect Philadelphia to the northern suburbs.

The facility's first floor will welcome patients with registration services and house imaging and radiation oncology. Upper floors will offer clinical spaces for various specialties, including a third floor dedicated to dermatology services and Mohs surgical procedure rooms for skin cancer care and a fourth floor devoted to medical oncology and infusion services. Adaptable shell space will ensure room for future growth.

Penn Medicine Montgomeryville's medical office building will feature a blend of forward-thinking design with environmental stewardship, targeting the prestigious LEED Gold certification and continuing the health system's efforts to become the nation's most environmentally friendly healthcare organization. Penn Medicine's Clifton Center for Medical Breakthroughs was the largest LEED Healthcare Gold certified building

*(continued on page 7)*

## Mark Trodden: Dean of Penn's School of Arts & Sciences

Mark Trodden has been named Dean of the School of Arts & Sciences and the Thomas S. Gates Jr. Professor at the University of Pennsylvania, effective June 1, 2025. The announcement was made on April 15 by Penn President J. Larry Jameson and Provost John L. Jackson, Jr.



Mark Trodden

"Dr. Trodden is a distinguished physicist, an accomplished academic leader, and a deeply respected member of the Penn community, and brings extraordinary breadth and depth of experience to one of the University's most vital academic enterprises," said President Jameson. "In his previous roles at Penn, Dr. Trodden has earned wide admiration for his principled leadership, collaborative spirit, and ability to navigate the intersection of research excellence, educational mission, and institutional stewardship. His experience, judgment, and vision made him the clear and compelling choice to lead the school into its next era. He brings a deep understanding of the school's distinctive landscape, a respect for its wide-ranging strengths, and a forward-looking vision for its continued excellence."

Dr. Trodden currently serves as associate dean for the natural sciences and the Fay R. and Eugene L. Langberg Professor of Physics in the School of Arts & Sciences. A Penn faculty member since 2009, he is co-director of the Center for Particle Cosmology and previously chaired the department of physics and astronomy from 2014 to 2022.

As associate dean, Dr. Trodden oversees seven departments and 15 centers and institutes, advancing strategic priorities across the natural sciences while forging key interdisciplinary partnerships within and beyond Penn. He was an invaluable partner in the completion of the Vagelos Laboratory for Energy Science and Technology while also engaging deeply with alumni, donors, and volunteer leaders across the school and University community.

A widely cited scholar in cosmology and particle physics, Dr. Trodden is a fellow of the American Physical Society, the American Association for the Advancement of Science, and

*(continued on page 7)*

### INSIDE

- 2 Faculty Senate Executive Committee Agenda; Penn Professional Staff Assembly 2025 Call for Nominations; Deaths
- 3 Pennsylvania Primary Election Info: May 20, 2025
- 4 Honors & Other Things
- 6 Weekly Crime Reports
- 7 Update: April AT PENN
- 9 Research & Innovation

## From the Faculty Senate Office

The following agenda is published in accordance with the Faculty Senate Rules. Any member of the standing faculty may attend SEC meetings and observe. Questions may be directed to Patrick Walsh, executive assistant to the Senate Office, either by telephone at (215) 898-6943 or by email at [senate@pobox.upenn.edu](mailto:senate@pobox.upenn.edu).

### Faculty Senate Executive Committee Agenda

Wednesday, April 23, 2025, 3–5 p.m. ET

1. Finalize Minutes of April 2, 2025 meeting
2. Tri-Chairs' Report
3. Update from the Office of the Provost  
Discussion with Provost John L. Jackson, Jr.
4. Proposed Resolution on Shared Governance and Graduate Admissions
5. Impacts of Federal Research Funding Cuts  
Discussion with Jonathan A. Epstein, Dean of the Perelman School of Medicine and Executive Vice President for the University of Pennsylvania Health System
6. New Business

### Penn Professional Staff Assembly (PPSA) 2025 Call for Nominations

Nominations are now open to all monthly-paid, full-time Penn staff for election to positions on PPSA's Executive Board, as well as for potential appointments as PPSA representatives to University committees for the upcoming academic year 2025-2026. All monthly-paid, full-time University staff members are encouraged to self-nominate or nominate colleagues for consideration using the nomination [form](#) by no later than May 10, 2025.

The PPSA is a volunteer organization operated by and for all monthly-paid, overtime-exempt University staff members. The mission of the PPSA is to support and promote staff engagement and collaboration within the University of Pennsylvania community. Involvement with PPSA activities provides opportunities to network with colleagues through various workshops and events that enhance professional development and work life at Penn.

Participation in PPSA requires only a few hours of commitment each month. These positions provide an excellent opportunity to connect with colleagues from across the University, thereby enriching your professional life at Penn. Executive Board members are responsible for assisting with program development and coordination. The PPSA Board convenes monthly. University committee members meet as determined by the specific chair and are required to report to the Executive Board periodically.

#### PPSA:

1. Provides a forum through which staff can engage in dialogue about issues facing the University and higher education
2. Participates and collaborates in University governance through University Council and other committees and task forces
3. Serves as an informational network to promote seminars and programs that enrich the quality of experience and work life for professional staff
4. Provides a supportive network to assist the University in achieving its goals and objectives

### Executive Committee Nominations

The following positions are open for nomination:

**PPSA Chair-Elect (one position, three-year term of service):** The PPSA operates under a tri-chair format. The chair-elect role is a one-year term, followed by a one-year term as PPSA chair and then transitioning to the past-chair role in the third year. The chair is the primary executive officer responsible for calling and presiding over meetings, preparing agendas, and providing leadership and representation of PPSA at University Council and University-level committees.

**Board Members At-Large (four positions, two-year term of service):** The members at-large participate in Executive Board meetings, manage PPSA projects and events, and serve on other University committees as needed.

All nominees will be asked to submit a brief candidate bio and written personal statement. The final list of candidates will be announced via PPSA's mailing list before the election. The 2025-2026 election for the chair-elect and board will occur following PPSA's Annual Elections Meeting in June 2025. Details on the honored speaker and location will be announced in May 2025.

All full-time, monthly-paid University staff members are welcomed and encouraged to attend the meeting as guests of PPSA. Lunch will be served. Information regarding sign-ups to attend the Annual Election Meeting will be sent via email to members of the PPSA listserv. You may register for the listserv by visiting <http://ppsa.upenn.edu>.

### University Committee Nominations

PPSA invites you to nominate yourself or others for a one-year service term on other University committees, including the 2025-2026 University Council Committees. The Council committees, which also include faculty and student members, serve as advisory bodies, and play important roles in shaping academic and administrative policy across the campus. Please consider taking advantage of this opportunity to learn about the administrative structure of the University and have input into its decision-making.

For more information on the work of the University Council committees, visit <https://secretary.upenn.edu/univ-council/committees>. University committee members will be appointed by the PPSA tri-chairs from among all applicants following the election.

Questions on the nomination and election process can be directed to [ppsa@lists.upenn.edu](mailto:ppsa@lists.upenn.edu). The election process is governed by the PPSA Bylaws, available on the PPSA website at <http://ppsa.upenn.edu>. To nominate yourself or someone else, please fill out the form found here: [https://upenn.col.qualtrics.com/jfe/form/SV\\_9ujkxzN3paXj5rM](https://upenn.col.qualtrics.com/jfe/form/SV_9ujkxzN3paXj5rM).

—Penn Professional Staff Assembly (PPSA)

## Deaths

### Michael Mennuti, Obstetrics/Gynecology

Michael T. Mennuti, an emeritus professor of human genetics and of pediatrics in the Perelman School of Medicine and the former chair of the department of obstetrics and gynecology at the Hospital of the University of Pennsylvania, died on April 7. He was 82.

Dr. Mennuti received a BS from Georgetown University in 1964, then received his MD cum laude four years later, also from Georgetown. He was one of the first maternal-fetal medicine specialists to be board certified in clinical genetics after completing his residency and fellowship training at the Hospital of the University of Pennsylvania and the department of human genetics. He joined Penn's faculty in 1969 as an assistant instructor. In 1975, he became an assistant professor; he was then promoted to an associate professor in 1981 and to a full professor in 1987. From 1987 to 2002, he also chaired the department of obstetrics and gynecology at the Hospital of the University of Pennsylvania, and he also served a long tenure as director of Penn Medicine's genetics program and cytogenetic laboratory. Dr. Mennuti was an active member of Penn's faculty, chairing Clinical Practices of the University of Pennsylvania (CPUP)'s Executive Committee and Finance Committee.

As department chair of obstetrics and gynecology at HUP, Dr. Mennuti served as the principal investigator of the Women's Reproductive Health Research (WRHR) Career Development Program and inspired and supported many young physicians to pursue a career as independent physician investigators in academic medicine. To honor Dr. Mennuti and his nearly 50-year career as a clinician, educator, and leader, the department established the Michael T. Mennuti Associate Professorship in 2019.

Dr. Mennuti's research and clinical interests included serum screening for Down syndrome, screening for cystic fibrosis, and prevention of folic acid-dependent neural tube defects. In addition to his faculty roles at Penn, he served on the Pennsylvania Department of Health's Genetics Advisory Council and the Newborn Screening Technical Advisory Committee. At the national level, he served as vice president of the American Board of Obstetrics and Gynecology, as president of the American College of Obstetricians and Gynecologists, and as president of the Association of American Obstetricians and Gynecology Foundation. He was also involved with the American College of Medical Genetics, Association of Professors and Obstetricians and the Obstetrical Society of Philadelphia.

Dr. Mennuti is survived by his wife, Nancy Mennuti; his children, Jonathan and Cara Mennuti Curley; and three grandchildren. Donations in Dr. Mennuti's memory can be made to the [Michael T. Mennuti, MD Associate Professorship in Reproductive Health at Penn Medicine](#). Donation checks can be made out to "Trustees of the University of Pennsylvania" and sent to: Penn Medicine Development, c/o Kelly McBride, 3535 Market Street, Suite 750, Philadelphia, PA 19104.



Michael Mennuti



## 2025 Recipients of the President's Engagement Prize and the President's Innovation and Sustainability Prizes Announced

(continued from page 1)

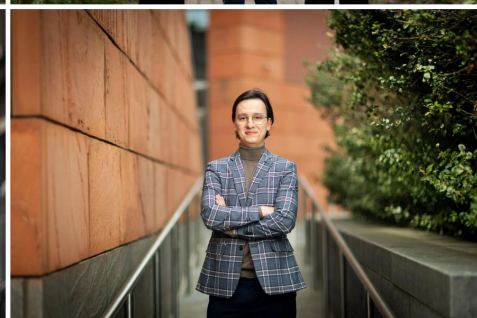
The 2025 prize recipients—selected from an applicant pool of 68—will spend the next year implementing the projects:

*Ejun Hong and Jack Roney for PIXEL:* Ms. Hong, a fine arts and cinema & media studies double major in the College of Arts & Sciences from Edmonton, Canada, and Seoul, South Korea, and Mr. Roney, an architecture and fine arts major in the College of Arts & Sciences from Jonesborough, Tennessee, will focus on building bridges between the creative industries and under-resourced public high school students in the greater Philadelphia area through photography and film with the Project for Inspiring eXpression, Education, and Leadership (PIXEL), building on the existing Participatory Action Art Mentorship Program at Sayre High School. The PIXEL team is mentored by Jarrett Stein, the UACS Director of Health Partnerships and Social Ventures at the Netter Center for Community Partnerships.

*Imani Nkrumah Ardayfio, Inaya Zaman, and Rashmi Acharya for Nourish to Flourish:* Ms. Ardayfio, a history and Africana studies double major in the College of Arts & Sciences from Washington, D.C.; Ms. Zaman, a dual-degree major in the Huntsman Program in International Studies and business from Washington, D.C.; and Ms. Acharya, a health and societies major in the College of Arts & Sciences from Eden Prairie, Minnesota, will draw on principles of behavioral economics to implement school-based nutrition programs in West Philadelphia. At schools, the team will create access points for parents and families to obtain fresh produce from local farmers to address hunger and nutrition inequities, work to redesign school cafeteria spaces and change food marketing to promote healthy food choices, and offer interactive hands-on nutrition education during and after school hours. The Nourish to Flourish team is mentored by Heather Klusaritz, an associate professor of family medicine and community health at the Hospital of the University of Pennsylvania.

*Melanie Herbert, Nami Lindquist, and Alexandra Popescu for Sync Labs:* Ms. Herbert, an electrical engineering major in the School of Engineering & Applied Science from Short Hills, New Jersey; Ms. Lindquist, a dual-degree major in computer science and economics in the Jerome Fisher Program in Management & Technology from Bellevue, Washington; and Ms. Popescu, a systems engineering major in the School of Engineering & Applied Science from Easton, Connecticut, will address eldercare with an effective, privacy-centric AI system that reduces staff exhaustion, addresses caregiving gaps, and offers a solution for issues in senior care. Sync Labs is mentored by Jeffrey Babin, a professor and the associate director of engineering entrepreneurship in the School of Engineering & Applied Science and the engineering faculty director for Venture Lab.

*Piotr Lazarek for Nirby:* Mr. Lazarek, a dual-degree major in the Jerome Fisher Program in Management & Technology from Pawlowice, Poland, will further grow Nirby, a real-time soil analytics and farmland-management system designed to address inefficiencies in fertilizer usage, by integrating satellite data and drone-enabled soil measurements to pro-



(Top left) Team PIXEL: Ejun Mary Hong and Jack Roney; (top right) The Nourish to Flourish team: Rashmi Acharya, Imani Nkrumah Ardayfio, and Inaya Zaman. (Bottom left) For Sync Labs, Melanie Herbert, Nami Lindquist, and Alexandra Popescu; (bottom right) Piotr Lazarek for Nirby.

vide real-time insights into field productivity and nutrient distribution. Mr. Lazarek is mentored by Jeffrey Babin.

This year's finalists also included seniors Nikita Bharati and Louis Hu for GirlSTEM-powerment; Hiba Jamil, Anthony Montes de Oca, and Alan Han for the Humana Program; Brianna Leung for Enginuity; Shivek Narang for Empower Through Recovery; and Mathieu Perez for Lucy.

"Congratulations to this inspiring group of students, whose innovative ideas will shape our future," said Provost John L. Jackson, Jr. "Their projects—across diverse areas from AI

and art to behavioral economics and farmland management—embody the values of our strategic framework, *In Principle and Practice*, to lead on the great challenges of our time, foster leadership and service, and deepen connections with our neighbors and the world. We are grateful to their faculty advisors and the staff of the Center for Undergraduate Research and Fellowships, who worked closely with them to develop these exciting initiatives."

The prizes are supported by trustee emerita Judith Bollinger and William G. Bollinger, in honor of Ed Resovsky, and chair of the Board of Trustees Ramanan Raghavendran.

### Pennsylvania Primary Election Information: May 20, 2025

May 20, 2025 is the Pennsylvania Primary Election. Here's what you need to know to successfully cast your ballot.

May 5, 2025 is the last day to register to vote in the Pennsylvania Primary Election on May 20, 2025. To register, visit <https://bit.ly/3TfQyJn>. To check your voter registration status and confirm your polling place location, visit <https://bit.ly/48OzkIV>. Polls are open on Tuesday, May 20, from 7 a.m. to 8 p.m.

The deadline to request a mail-in or absentee ballot is May 13, 2025. Any registered voter may request a mail-in ballot. Absentee ballots can be requested by voters with disabilities or an illness that prevents them from going to their polling place on Election Day, or by those who will be absent from their municipality on Election Day. Request forms must be received by your county election board by 5 p.m. on May 13. Completed ballots must be received by your county election board by 8 p.m. on Primary Day, May 20. To apply for either a mail-in or absentee ballot online, visit <https://bit.ly/3wYTT89>.

Pennsylvania is a closed primary state, meaning that you can only vote for candidates in the same political party you have named in your voter registration. For example, if you are registered to vote as a member of the Democratic Party, then you can vote in the Democratic primary, but not the Republican primary. All voters can vote on constitutional amendments, ballot questions, and any concurrent special election contests.

The New Jersey Primary Election will take place on June 10, 2025. For information regarding New Jersey's Primary Election, visit <https://bit.ly/3IvosFg>.

For information about Delaware Municipal Elections, visit <https://bit.ly/3FCvMR1>.

To learn more about Election Day at Penn and student-led non-partisan voter engagement efforts, visit [vote.upenn.edu](https://vote.upenn.edu).

—Office of Government and Community Affairs

# Honors & Other Things

## Shelley Berger: AACR Honor

Shelley L. Berger, the Daniel S. Och University Professor with appointments in the Perleman School of Medicine and the School of Arts & Sciences, has been recognized for her outstanding contributions to cancer research by the American Association for Cancer Research (AACR) with the 2025 AACR-Women in Cancer Research Charlotte Friend Lectureship.

The lectureship is given annually to a scientist who has made meritorious contributions to the field of cancer research and who has furthered the advancement of women in science. The award is part of AACR's Scientific Achievement Awards program and will be presented at the 2025 AACR Annual Meeting, taking place from April 25-30, 2025 in Chicago.

Dr. Berger is the founder and director of the Penn Epigenetics Institute and the co-director of the tumor biology program at Penn Medicine's Abramson Cancer Center (ACC). Her work lies at the intersection of genetics, epigenetics, genomics, computational biology, and cell and developmental biology.

"Dr. Berger's impact is due in part to her exceptional ability to galvanize groups for trailblazing collaborative research, as she has done in epigenetics and more recently in cancer immunology," said Robert Vonderheide, director of the ACC. "We are deeply impressed by her commitment to fostering the careers of women faculty and trainees, both here at Penn and at the national level."

Dr. Berger is recognized for her fundamental discoveries in cancer epigenetics, including how histone modifications and transcription factors regulate cancer, aging, and T cell function. Her groundbreaking research has elucidated key mechanisms of tumor suppressor p53 regulation, chromatin remodeling, and immune cell epigenetics, advancing scientific understanding of cancer biology and therapeutic strategies.

She is also recognized for her transformative leadership in mentoring the next generation of scientists, expanding opportunities for researchers from all backgrounds, and shaping national policies to strengthen the biomedical workforce. She has mentored dozens of trainees, who have gone on to successful careers in academia and teaching, the pharmaceutical industry, and scientific writing. Currently, her lab includes 20 trainees, comprising a mix of undergraduates, graduate students, and postdoctoral researchers.

Dr. Berger is an elected member of the National Academy of Sciences, the National Academy of Medicine, the American Academy of Arts and Sciences, and the American Association for Cancer Research. She has published 250 papers and reviews, with many in high-impact journals, such as *Nature*, *Science*, and *Cell*.

## Rita Copeland: 2025 Haskins Medal

Rita Copeland, the Sheli Z. and Burton X. Rosenberg Professor in the School of Arts & Sciences, has won the 2025 Haskins Medal for

her book *Emotion and the History of Rhetoric in the Middle Ages*. The medal is the most prestigious distinction offered by the Medieval Academy of America (MAA) and is awarded on an annual basis.

MAA praised Dr. Copeland's book as "a deeply learned and exquisitely comprehensive account of the history and uses of rhetoric" during the Middle Ages. The academy further applauded her "nuanced, sophisticated thesis" and mastery of her subject.

Dr. Copeland has expertise across numerous fields and periods, including Medieval literature and the history of both rhetoric and literacy from the ancient to early modern periods. She has been a faculty member in Penn's classical studies department for more than 20 years, and today has a joint appointment in the English department.

The Haskins Medal is typically awarded to scholars who are well-established in their careers and respected for their scholarship. First given in 1940, it is named for Medieval historian Charles Homer Haskins, who served as an advisor to President Woodrow Wilson in addition to founding—and later leading—the MAA. His son, George Lee Haskins, eventually served as the Algernon Sydney Biddle Professor of Law at the University of Pennsylvania Carey Law School.

## Penn GSE Faculty Recognized with Awards and Grants

Several Penn GSE faculty members have received awards for their research and leadership in their fields. The honors include three Spencer Foundation grants to fund studies on the impact of a Montessori-inspired early education program for girls in Nigeria, another Spencer Foundation grant exploring how student data shapes family educational experiences and influences school stakeholders, and a third project investigating how state policies transform K-12 teacher roles.

These accolades align with Penn GSE's strategic vision, *Together for Good*, and the school's commitment to advancing professional training and educational leadership, strengthening education's role in a democratic society, deepening community partnerships, and fostering innovation.

This year's early recognitions include:

Maria Cioè-Peña, an assistant professor and bilingual/bi-literate researcher and educator, received an award—Research Improving the Educational Access, Experiences, and Outcomes of BIPOC Students with Disabilities—from the research division of the Council for Exceptional Children, the largest international special education professional organization. Dr. Cioè-Peña's work examines the intersections of disability, language, school-parent partnerships, and education policy. The award recognizes contributions to understanding and enhancing educa-

tional access, experiences, and outcomes for BIPOC students.

L. Michael Golden, vice dean of innovative programs and partnerships and a senior fellow, received a Merit Award from the Pennsylvania Educational Technology Expo and Conference (PETE&C) for his leadership in educational technology and research contributions. Dr. Golden founded and leads Catalyst@Penn GSE, which designs innovative practices and scalable solutions to expand learning opportunities.

Pam Grossman, a professor of education and former Penn GSE Dean, and Maya Kaul, a Penn GSE alum and postdoctoral fellow, have been awarded a Spencer Foundation grant for their project, "Chutes or Ladders: Surveying State Policy Approaches to Transforming K-12 Teacher Roles." The study investigates how state policies influence the transformation of K-12 teacher roles. Dr. Grossman is an expert on teacher education, teacher knowledge, professional education, and teaching English in secondary schools. Dr. Kaul is a postdoctoral fellow at Penn GSE.

The American Association of Colleges for Teacher Education has also awarded Dr. Kaul its 2025 AACTE James D. Anderson Outstanding Dissertation Award for her doctoral dissertation, "The Making of a Professional: Institutional Logics of Teacher Education and Teacher Professional Identity Formation." The award, given in honor of highly respected educational leader James D. Anderson, recognizes excellence in doctoral research that enhances educator preparation or teaching and learning. In her dissertation, Dr. Kaul investigates how teacher education reforms aim to transform professional education and how these frameworks will impact teacher education programs and educators' professional identities. She accepted the award at the AACTE's 2025 annual meeting in February in Long Beach, California.

Dr. Kaul has also been honored by the American Educational Research Association (AERA) with an Outstanding Dissertation Award, Division L for Educational Policy & Politics. She will receive the award on April 24, 2025.

Yasmin B. Kafai, the Lori and Michael Milken President's Distinguished Professor, has been selected for a 2025 Stibitz-Wilson Award from the American Computer and Robotics Museum. The award recognizes her role in developing the Scratch programming community, used by over 100 million children worldwide, with colleagues from MIT. Dr. Kafai develops tools, projects, and communities that foster coding, critical thinking, and creativity. Her current research explores algorithm auditing in machine learning applications. Additionally, through the nationwide Exploring Computer Science curriculum, she launched the use of electronic textiles to introduce computing, engineering, and machine learning in high school classrooms. She will receive the award in person during an event held at the museum in September in Bozeman, Montana.

Sarah Schneider Kavanagh, an associate professor, was recently awarded a Spencer Foundation grant for her project, "Collaborating Towards Transformational Visions for Digital School Systems." Dr. Kavanagh's research focuses on the impact of expanding student data sets, including how educational stakeholders

(continued on page 5)



(continued from page 4)

apply the data and its effect on families' relationships with the school. The three-year project will begin with interviews with educators, administrators, and focus groups of students and families. Then, the research team will create working groups to develop alternative data collection, usage, and application norms.

Trey Smith, a science methods instructor for the Penn GSE's Independent School Teaching Residency (ISTR) program, was honored by former U.S. President Joe Biden with the Presidential Award for Excellence in Mathematics and Science Teaching (PAEMST). The award is the nation's highest for science and math teachers and mentors. A veteran educator, Mr. Smith has taught biology, chemistry, computer science, physical science, and social studies in Philadelphia public schools and has received multiple teaching awards. He is also a teacher consultant for the Philadelphia Writing Project (PhilWP) at Penn GSE.

Sharon Wolf, an associate professor, has been awarded a Spencer Foundation grant to fund her research on a Montessori-based early education program for girls from vulnerable families in rural northern Nigeria. The project, "Assessing Medium-Term Impacts of Montessori-Preschool Spaces in Rural Northern Nigeria," is a research-practice partnership with the Centre for Girls. This work expands on a previous study that determined the program significantly impacted the students' development and learning. The Spencer Foundation grant will help advance the second related study examining the midterm outcomes in primary school, including enrollment, academic and non-academic outcomes, and family responses.

### Hoang C. Le: Paul & Daisy Soros Fellowship for New Americans

Hoang C. Le, a 2023 Penn graduate, has received a Paul & Daisy Soros Fellowship for New Americans, a merit-based program that provides graduate school funding for immigrants and children of immigrants to the United States.

Mr. Le is among the 30 chosen as 2025 P.D. Soros Fellows from more than 2,600 applicants. Each fellow receives as much as \$90,000 for graduate studies. Currently, Mr. Le is a first-year PhD student studying molecular and computational biology at Columbia University. During his PhD studies, he aims to systematically explore the evolution of viral-host interactions to uncover novel molecular tools and therapeutic targets.

Mr. Le graduated summa cum laude from Penn with bachelor's degrees in computational biology and economics in the Roy & Diana Vagelos Program in Life Sciences and Management, a dual-degree program between the School of Arts & Sciences and the Wharton School. He was the student commencement speaker for the College of Arts & Sciences.



Hoang Le

Born in Vietnam, Mr. Le is the son of Vietnamese refugees whose parents' early lives were shaped by the Vietnam War. After immigrating to the United States, Mr. Le's family moved often, eventually settling in Ft. Lauderdale, Florida. They had limited English proficiency and faced socioeconomic hardships, Mr. Le said, which exposed him to the "stark inequities that marginalized communities often endure," particularly on display at the nail salons where his parents worked.

Mr. Le entered Penn as a Questbridge Scholar, was a 2020-2021 U.N. Millennium Fellow, and was on the 2021-2022 team that won the Y-Prize competition for an idea using novel steerable needle technology. Mr. Le was co-editor-in-chief of the *Synapse* student publication and worked on different global health initiatives helping improve access to healthcare and diagnostics. Mr. Le also co-led the development of the life sciences and management pipeline program at the Netter Center for Community Partnerships, a two-year program for West Philadelphia high school students to learn about the intersection of science, medicine, and business.

Interested in exploring the biology of gene editing systems and to possibly uncover new ones, Mr. Le began working with Samuel Sternberg at Columbia University during his second year at Penn to bioinformatically study CRISPR systems, their evolution, and their ancient biological roles. His research resulted in coauthored publications in *Nature* and *Science*. Mr. Le also worked with Ophir Shalem at the Perelman School of Medicine to develop new CRISPR-based screening technologies to study neurodegeneration. His undergraduate work won the Vagelos Prize for Achievement in Scientific Research.

Mr. Le is Penn's 25th Paul & Daisy Soros Fellow since the fellowship program was founded in 1998, according to the Center for Undergraduate Research and Fellowships.

### Yvonne Aki-Sawyerr, Patrick Harker, Enrique Peñalosa: Penn IUR 2024 Urban Leadership Prize Honorees

The Penn Institute for Urban Research (Penn IUR) will honor three urban leaders at the 20th Annual Urban Leadership Forum, a milestone event honoring visionary global leaders who have shaped today's cities and featuring their presentation of their ideas for tomorrow's cities, on Friday, April 25. The forum will spotlight three recipients of the 2025 Lawrence C. Nussdorf Urban Leadership Prize and three recipients of the Lawrence C. Nussdorf Student Award while bringing together an extraordinary roster of past honorees and urban changemakers.

This year's distinguished awardees are:

- Yvonne Aki-Sawyerr, mayor of Freetown, Sierra Leone
- Patrick Harker, president and CEO of the Federal Reserve Bank of Philadelphia and dean of Penn's Wharton School from 2001 to 2007
- Enrique Peñalosa, mayor of Bogotá, Colombia from 1998 to 2001 and from 2016 to 2019

The prize and the award honor the legacy of the late Lawrence C. Nussdorf, a dedicated Penn IUR Advisory Board member, Penn alumnus, and visionary urban advocate. His passion

for vibrant, inclusive cities lives on through this annual recognition of transformative urban leadership.

These recipients have demonstrated bold, inclusive leadership in addressing the pressing urban challenges, from sustainability and mass transit innovation to economic mobility and equitable city planning.

The 2025 Nussdorf Student Award winners are Nikita Bharati, C'25, Griffin Pitt, C'26, and Skyla Rimple, C'26.

"We are thrilled to celebrate two decades of honoring the individuals who have not only shaped urban life but are also continuing to actively build sustainable futures—and we have great hopes for the future leadership of our students," said Eugenie Birch, co-director of Penn IUR. "This year's honorees exemplify what it means to lead with courage, foresight, and an unshakable commitment to livable cities for all."

The 20th Annual Urban Leadership Forum is open to members of the Penn community and the public. For more information about the event and the honorees and to register to attend, visit <https://penniur.upenn.edu/events/20th-annual-urban-leadership-forum-urban-leadership-for-the-21st-century>.

### Michael Mann: Planet Earth Award

Michael Mann, Penn's Vice Provost for Climate Science, Policy, and Action and the Presidential Distinguished Professor of Earth and Environmental Science in the School of Arts & Sciences, has been awarded the Alliance of World Scientists' (AWS) Planet Earth Award. He is one of five honorees to receive this year's distinction.

The Planet Earth Award recognizes efforts that "champion life on Earth" and "demonstrate exceptional creativity or contributions in their work in science or science-based advocacy with the public, policymakers, or other groups seeking solutions to environmental challenges." The award can go to individuals or to groups.

AWS said that Dr. Mann, who also serves as director of the Penn Center for Science, Sustainability, and the Media, "has advanced understanding of human-induced climate change and the need for action to mitigate its effects." The organization also points to Dr. Mann's famed "hockey stick" graph as an enduring symbol of his contributions to science and climate education. That graph shows the dramatic rise in global temperatures that has played out over the past century amid worsening climate impacts.

Dr. Mann has received many honors and distinctions for his climate work and for his vast scientific expertise. He was elected to the National Academy of Sciences in 2020 and to a position as a foreign member of the Royal Society in 2024. Dr. Mann has also authored more than 200 peer-reviewed publications and is widely considered one of the nation's leading climate scientists and commentators.



Michael Mann

## Division of Public Safety University of Pennsylvania Police Department Crime Report

About the Crime Report: Below are the crimes against persons and/or crimes against property from the campus report for **April 7-13, 2025**. The crime reports are available at: <https://almanac.upenn.edu/sections/crimes>. Prior weeks' reports are also online. —Eds.

This summary is prepared by the Division of Public Safety (DPS) and contains all criminal incidents reported and made known to the Penn Police, including those reported to the Philadelphia Police Department (PPD) that occurred within our patrol zone, for the dates of **April 7-13,**

**2025**. The Penn Police actively patrol from Market Street to Baltimore Avenue and from 30<sup>th</sup> Street to 43<sup>rd</sup> Street in conjunction with the Philadelphia Police.

In this effort to provide you with a thorough and accurate report on public safety concerns, we hope that your increased awareness will lessen the opportunity for crime. For any concerns or suggestions regarding this report, please call DPS at (215) 898-7297. You can view the daily crime log on the [DPS website](#).

### Penn Police Patrol Zone

*Market Street to Baltimore Avenue and from 30<sup>th</sup> Street to 43<sup>rd</sup> Street*

Crime Category	Date	Time	Location	Description
<i>Auto Theft</i>	04/07/25	5:16 PM	4200 Baltimore Ave	Vehicle taken from highway
	04/08/25	12:45 PM	219 S 33rd St	Electric scooter taken
	04/09/25	1:55 PM	3330 Walnut St	Secured e-bike taken from bike rack
	04/09/25	6:57 PM	210 S 34th St	Secured e-bike taken from bike rack
	04/13/25	4:40 PM	122 S 43rd St	Secured e-bike taken from railing
<i>Bike Theft</i>	04/13/25	6:30 PM	3535 Market St	Secured scooter taken from bike rack
	04/07/25	2:21 PM	380 University Ave	Secured bike taken
	04/08/25	4:30 PM	3400 Spruce St	Secured bike taken from bike rack
<i>Fraud</i>	04/13/25	9:48 PM	3600 Chestnut St	Unknown offender threatened to release images of complainant unless money was exchanged
<i>Retail Theft</i>	04/07/25	2:26 PM	3744 Spruce St	Retail theft of consumable goods
	04/07/25	3:35 PM	3741 Walnut St	Retail theft of iPhone
	04/07/25	3:28 PM	3330 Market St	Retail theft of consumable goods
	04/07/25	3:49 PM	3744 Spruce St	Retail theft of consumable goods
	04/07/25	9:23 PM	3330 Market St	Retail theft of consumable goods
	04/08/25	10:51 AM	3330 Market St	Retail theft of consumable goods/Arrest
	04/09/25	1:31 AM	3330 Market St	Retail theft of consumables
	04/10/25	4:31 PM	4001 Walnut St	Retail theft of hygiene products
	04/11/25	8:29 PM	3330 Market St	Retail theft of consumable goods
	04/07/25	2:11 PM	119 S 31st St	Theft of package from mailroom
<i>Theft from Building</i>	04/08/25	5:57 PM	3200 Chestnut St	Theft of a wallet from restaurant
	04/10/25	11:10 AM	3730 Walnut St	Theft of a peacoat from classroom
	04/10/25	4:13 PM	3535 Market St	Complainant's wallet was taken from her office
	04/12/25	6:48 PM	3180 Chestnut St	Secured bicycle taken from parking garage
	04/12/25	8:22 PM	3701 Walnut St	Theft of a jacket from a locker inside of the men's locker room
<i>Vandalism</i>	04/12/25	6:57 PM	113 S 40th St	Broken glass door

### Philadelphia Police 18th District

*Schuylkill River to 49<sup>th</sup> Street & Market Street to Woodland Avenue*

Below are the crimes against persons from the 18<sup>th</sup> District: 6 incidents were reported for **April 7-13, 2025** by the 18<sup>th</sup> District, covering the Schuylkill River to 49<sup>th</sup> Street & Market Street to Woodland Avenue.

Crime Category	Date	Time	Location
<i>Aggravated Assault/Arrest</i>	04/10/25	9:42 PM	4400 Walnut St
	04/13/25	9:55 PM	4300 Blk Chestnut St
<i>Assault</i>	04/09/25	10:18 AM	1229 S Markoe St
	04/10/25	5:28 PM	4314 Locust St
<i>Robbery</i>	04/12/25	12:23 AM	1 Convention Ave
	04/12/25	11:09 AM	4300 Blk Chestnut St

The Division of Public Safety offers resources and support to the Penn community. DPS has developed a few helpful risk reduction strategies outlined below. Know that it is *never* the fault of the person impacted (victim/survivor) by crime.

- See something concerning? Connect with Penn Public Safety 24/7 at (215) 573-3333.
- Worried about a friend's or colleague's mental or physical health? Get 24/7 connection to appropriate resources at (215) 898-HELP (4357).
- Seeking support after experiencing a crime? Call Special Services (support and advocacy resources) at (215) 898-4481 or email an advocate at [specialservices@publicsafety.upenn.edu](mailto:specialservices@publicsafety.upenn.edu).
- Use the [Walking Escort](#) and [Riding](#) services available to you free of charge.
- Take a moment to update your cell phone information for the [UPennAlert Emergency Notification System](#).
- Download the [Penn Guardian App](#), which can help police better find your location when you call in an emergency.
- Access free [self-empowerment and defense courses](#) through Penn DPS.
- Stay alert and reduce distractions. (Using cell phones, ear buds, etc. may limit your awareness.)
- Orient yourself to your surroundings. (Identify your location, nearby exits, etc.)
- Keep your valuables out of sight and only carry necessary documents.



## Mark Trodden: Dean of Penn's School of Arts & Sciences

(continued from page 1)

the United Kingdom's Institute of Physics. His leadership has been shaped by his service on national scientific advisory bodies and his mentorship of the next generation of scholars in the field.

Throughout his career at Penn, Dr. Trodden has demonstrated a deep appreciation for the full range of inquiry and scholarship within the School of Arts & Sciences. He has been a steadfast advocate for the humanities, a champion of interdisciplinary collaboration, and a trusted institutional voice in moments of both promise and complexity.

"It is a profound honor to lead the School of Arts & Sciences at this moment," said Dr. Trodden. "This school is home to some of the most brilliant and creative minds in the world, and I am deeply committed to supporting our faculty, students, staff, and alumni as we advance knowledge, elevate discourse, and prepare our graduates for thoughtful and engaged lives. I look forward to working closely with colleagues across disciplines, and across Penn, to shape the next chapter in our school's proud history."

In making the announcement of Dr. Trodden's appointment, President Jameson also thanked Vijay Kumar, the Nemirovsky Family Dean of the School of Engineering and Applied Science, who chaired the Consultative Committee for the dean search, as well as the members of the committee: "I am grateful to Dean Kumar and the Consultative Committee for thoughtful guidance and dedication throughout the search in helping us identify a leader of Dr. Trodden's caliber and vision."

## Penn Medicine Breaks Ground on Innovative Outpatient Center in Montgomery County

(continued from page 1)

when it opened in 2021, followed by Penn Medicine Radnor, another LEED Gold certified facility, which opened in 2022.

Ample windows will allow natural lighting throughout the building and offer therapeutic views of surrounding meadow landscapes filled with diverse native plants. Carefully selected vegetation will reduce irrigation demands, foster biodiversity, minimize maintenance requirements, and enhance soil health across the campus.

Specialized bird-safe glass will be used on the building's exterior to protect local wildlife populations. Foundation systems and an adjacent 800-space parking structure will use low-carbon concrete, significantly reducing the project's environmental footprint.

Penn Medicine Montgomeryville represents a cornerstone in Penn's ambitious sustainability roadmap, directly supporting Penn's institutional commitments to reduce operational carbon emissions by 50 percent across all campuses by 2030, with full net-zero operational carbon emissions targeted by 2042.

At the heart of the facility's efficiency is a powerful 530-ton geothermal system that will serve as the primary energy source for both heating and cooling functions. This comprehensive approach dramatically reduces the building's overall energy consumption. The building will operate on a 100 percent electric platform—eliminating natural gas requirements except for essential backup systems—significantly reducing fossil fuel dependence.

## Update

April AT PENN

### CONFERENCES

**22** *Chinese Politics, Past and Present*; brings together scholars to identify, contextualize, and trace the development of key features of contemporary Chinese politics; 2-5 p.m.; room 418, PCPSE (Center for the Study of Contemporary China).

**24** *Korean Studies Graduate Fellows Symposium*; graduate fellows will present original research on topics related to Korea; noon; suite 310, 3600 Market Street (Korean Studies).

**26** *Collage*; Penn's Francophone, Italian and Germanic Studies Society's 2025 graduate conference welcomes 14 speakers for four panels; 10 a.m.-6 p.m.; room 223, Van Pelt Library; info: <https://wolfhumanities.upenn.edu/events/collage> (Francophone, Italian, & Germanic Studies).

### FILMS

**22** *Born For You*; Luca, a single Catholic man, adopts Alba, a child with Down syndrome, and becomes the first single, gay adoptive parent in Italy; 6 p.m.; room 543, Williams Hall (Cinema & Media Studies; Francophone, Italian, & Germanic Studies).

### FITNESS & LEARNING

**22** *Schwarzman Scholars Information Session*; learn about a highly selective international scholarship program designed to prepare future leaders for success in a world where China plays a key global role; noon; room G08/09, College Hall; register: <https://tinyurl.com/curf-info-session-apr-22> (Center for Undergraduate Research & Fellowships).

**24** *Teaching After Penn*; a practical session on building a teaching career while maintaining your art practice; learn how to craft a teaching philosophy, explore different types of academic positions, and hear real-world case studies of recent grads balancing teaching and creative work; 5:30 p.m.; room 201A, Charles Addams Hall (Fine Arts).

**29** *Fellowships Information Session*; learn about funding opportunities for Penn students and alumni to earn a graduate degree, conduct research, or engage in service in the U.S. or abroad; 5 p.m.; room G08/09, College Hall; register: <https://forms.gle/W8h1j7usMQWFFzY8> (Center for Undergraduate Research & Fellowships).

### Graduate School of Education

Info: <https://www.gse.upenn.edu/news/events-calendar>.

**24** *Penn Chief Learning Officer EdD Virtual Information Session*; noon; online webinar.

*Learning Analytics & Artificial Intelligence (Online) MSED Virtual Information Session*; 7 p.m.; online webinar.

**28** *School Leadership Program Virtual Information Session*; 7 p.m.; online webinar.

### Penn Libraries

Various locations. Info and to register: <https://www.library.upenn.edu/events>.

**23** *Research Poster Design*; learn how to design a poster effectively, even when you have a lot of information to communicate; 5:15 p.m.;

Bollinger Digital Fabrication Lab, Holman Biotech Commons.

**24** *Bookbinding: Link Stitch*; learn how to bind your own book; 5:30 p.m.; seminar room level B, Fisher Fine Arts Library.

**25** *Lunch and Learn: Copyright and Your Dissertation*; will provide basic but essential information on how copyright law applies to the writing and deposit of your dissertation; 12:15 p.m.; room 241, Van Pelt Library, and online webinar.

*Origami with Bioplastics*; learn about the process and fold origami with sheets of this material, made at the Materials Library; 1-3 p.m.; seminar room level B, Fisher Fine Arts Library.

**28** *Intro to Metals: Sand Casting*; learn essential safety protocols and fundamental techniques for using a hand torch to sand cast a ring or small object in pewter; 4-6 p.m.; TinkerLab, Education Commons.

**29** *Common Press Studio Use Training*; learn and practice the basics of letterpress printing and typesetting; 10 a.m.-noon; Common Press, Fisher Fine Arts Library.

### MUSIC

**23** *CAMRA SSMF Performance: Immanuel Wilkins Blues Blood featuring Sonia Sanchez*; an offering in color, sound and transmuting the of violence state and carceral systems in ways that Black people have always embodied through relationship to community, self and spirit; 6 p.m.; Harrison Auditorium, Penn Museum (CAMRA, Center for Advanced Research in Global Communication).

**24** *Songwriters Collective Presents "On the Road Again"*; performance of original music by a student group dedicated to songwriting; 7 p.m.; lobby, Platt Performing Arts House; tickets: \$8-\$12 (Platt Performing Arts House). Also April 25, 7 p.m.; April 26, 7 p.m.

*Atma Presents "Bollywood Barbies"*; performance by Penn's premier female South Asian a cappella group; 8 p.m.; Class of 1949 Auditorium, Houston Hall; tickets: \$8-\$11 (Platt Performing Arts House). Also April 25, 8 p.m.

**25** *Counterparts Presents "The Countess and Her Counterpart"*; a cappella show full of elegance and grace, including songs by Ariana Grande, OneRepublic, John Legend, Adele, Radiohead, Frank Sinatra, and many more; 8:30 p.m.; Iron Gate Theater; tickets: \$10-\$13 (Platt Performing Arts House). Also April 26, 6 p.m.

**26** *Full Measure A Cappella's Spring Concert*; performance by Penn's first and only Christian a cappella group; 1 and 5 p.m.; Class of 1949 Auditorium, Houston Hall; tickets: \$8-\$12 (Platt Performing Arts House).

*New Spirit of Penn Gospel Choir Spring 25 Concert*; a mixture of contemporary gospel and praise dance performances; 3 p.m.; Philadelphia Episcopal Cathedral, 19 S. 38<sup>th</sup> Street; tickets: \$8-\$10 (Platt Performing Arts House).

**29** *Penn Staff & Community Choir Spring Concert*; inaugural performance by a group that brings harmony to campus; 6:30 p.m.; Harrison Auditorium, Penn Museum; register: [www.tinyurl.com/upennchoir](https://www.tinyurl.com/upennchoir) (Office of Social Equity and Community).

### ON STAGE

**25** *Onda Latina Presents "El Último Rodeo: Onda Latina en el Wild West"*; from high-stakes

(continued on page 8)

# Update

April AT PENN

(continued from page 7)

showdowns to secret desert romances, this performance is a journey through adventure, rivalry, and unity; 5:30 p.m.; Iron Gate Theater; tickets: \$8-\$13 (Platt Performing Arts House). Also April 26, 3 and 9 p.m.

*West Philly Swingers Presents "Wii Swing"*; high-energy performances that combine dynamic choreography with beloved Wii Sports games; 5:30 p.m.; Harold Prince Theater, Annenberg Center; tickets: \$8-\$12 (Platt Performing Arts House). Also April 26, 8 p.m.

*Theatre Arts Program Presents "365 Days / 365 Plays"*; three performers take on 20+ characters in 45 minutes with a performance that asks who controls the narrative; 7 and 8:15 p.m.; Bruce Montgomery Theater, Annenberg Center; tickets: \$5 (Platt Performing Arts House). Also April 26, 7 and 8:15 p.m.

*Excelano Project Presents "Coffee at Noon?"*; Penn's premier spoken word poetry collective presents a program of talented poets performing their original pieces; 8 p.m.; Rainey Auditorium, Penn Museum; tickets: \$9-\$12 (Platt Performing Arts House). Also April 26, 6 p.m.

*Soundworks Tap Factory "Sync or Swim"*; performance by Penn's one and only strictly tap dancing group; 8 p.m.; Harold Prince Theater, Annenberg Center; tickets: \$10-\$12 (Platt Performing Arts House). Also April 26, 5:30 p.m.

**27** *CityStep Penn Presents "Homecoming"*; celebratory performance by a group that connects with middle school students in West Philadelphia through dance and arts-based mentorship; 3 p.m.; Harold Prince Theater, Annenberg Center; tickets: \$10 (Platt Performing Arts House).

*Penn Chinese Dance Club Presents "Transience"*; reflective performance by a student-run nonprofit dance group dedicated to practicing classical and folk Chinese dance; 7:30 p.m.; Iron Gate Theater; tickets: \$10-\$12 (Platt Performing Arts House).

## READINGS & SIGNINGS

**22** *Book Launch: Boys Abducted: The Homoerotics of Empire and Race in Early Modernity*; Abdulhamit Arvas, English; 4 p.m.; room 135, Fisher-Bennett Hall (English).

### Kelly Writers House

In-person events at Arts Café, Kelly Writers House. Info and to register: <https://writing.upenn.edu/wh/calendar/0425.php>.

**28** *Zine Fest*; table space will be available for anyone who wants to bring their zines for sale or trade; 2:30-4:30 p.m.

## SPECIAL EVENTS

**23** *Undergraduate Perspectives: Media Research & Practice in Contentious Times*; celebrate Penn's award winning student journalists and hear presentations from undergrad researchers; 2 p.m.; room 500, Annenberg School (Center for Media at Risk, Media, Inequality & Change Center).

## TALKS

**22** *An Evening With Sean Baker*; Sean Baker, director, writer and producer; 7:30 p.m.;

Harrison Auditorium, Penn Museum; register: <https://tinyurl.com/baker-talk-apr-22> (Social Planning and Events Committee).

**23** *Efficient Computing for AI and Robotics: From Hardware Accelerators to Algorithm Design*; Vivienne Sze, Massachusetts Institute of Technology; 10:45 a.m.; room 225, Towne Building (Electrical & Systems Engineering).

*Documentary as Praxis: The Making of Misogynoir in Medicine*; Moya Bailey, filmmaker; noon; room 500, Annenberg School; register: <https://tinyurl.com/bailey-talk-apr-23> (Center for Media At Risk).

*Fake News, Echo Chambers, and Algorithms: A Data Science Perspective*; Duncan Watts, Penn Integrates Knowledge professor; noon; room 414, Amy Gutmann Hall, and Zoom webinar; join: <https://upenn.zoom.us/j/94075987313> (SEAS ASSET Center).

*Kin and Kind: The Vocabulary of Ethnicity in Medieval China*; Shao-Yun Yang, Denison University; noon; room 623, Williams Hall (East Asian Languages & Civilizations).

**24** *Engineered Biomaterials for Regeneration, Therapy, and Beyond*; Akhilesh K Gaharwar, Texas A&M University; 10:30 a.m.; Wu & Chen Auditorium, Levine Hall (Materials Science & Engineering).

*Opportunities & Challenges of Climate Action Planning in Indian Cities: A Case of Mumbai City*; Lubaina Rangwala, World Resources Institute India; noon; online webinar; register: <https://casi.sas.upenn.edu/events/lubaina-rangwala> (Penn Institute for Urban Research, Center for the Advanced Study of India).

*Scientific AI*; Andrew Zahrt, chemistry; Sudeep Bhatia, psychology; Irina Marinov, Earth & environmental science; Jésus Fernandez-Villaverde, economics; Maria Cuellar, statistics and criminology; Carlos Santana, philosophy; 1:30 p.m.; Glandt Forum, Singh Center for Nanotechnology (Data-Driven Discovery).

*Exploring Race, Sports, and Leadership*; N. Jeremi Duru, American University; 5 p.m.; room 260, Huntsman Hall; register: <https://wsb.wharton.upenn.edu/2025-race-and-sports/> (Wharton Sports Analytics and Business Initiative, Africana Studies).

*I Lived as a Refugee. I Know What I Got Through. I Know the Whole Experience*; Okello Maurice, Noel Bol Deng, and Nyaboul Biel, FilmAid; 5:30 p.m.; Public Trust, 4017 Walnut Street; register: <https://publictrust.org/stories-from-kakuma> (Public Trust).

*Before a Plant Arrives on Site: Politics, Migrations, and Possibilities of the Plant Nursery Trade*; Leah Kahler, landscape architecture; 6:30 p.m.; Upper Gallery, Meyerson Hall; register: <https://tinyurl.com/kahler-talk-apr-24> (Landscape Architecture, McHarg Center).

**25** *On Doorbells, MTurks, and Algorithmic Landscapes*; Simone Browne, University of Texas at Austin; 10:30 a.m.; room 500, Annenberg School; register: <https://tinyurl.com/browne-talk-apr-25> (Annenberg School).

*20th Annual Urban Leadership Forum: Urban Leadership for the 21st Century*; Yvonne Aki-Sawyer, mayor of Freetown, Sierra Leone; Patrick Harker, Federal Reserve Bank of Philadelphia; Enrique Peñalosa, former mayor of Bogotá, Colombia; 11 a.m.; online webinar; register: <https://tinyurl.com/penn-iur-talk-apr-25> (Penn Institute for Urban Research).

*Executive Leadership Dialogue*; Mikecia Witherspoon, executive Pennsylvania director for Senator John Fetterman; 1 p.m.; online webinar; info: <https://tinyurl.com/witherspoon-talk-apr-25> (Fels Institute of Government).

*The Arctic Ocean's Changing Beaufort Gyre*; Mary Louise Timmermans, Yale University; 3 p.m.; room 358, Hayden Hall (Earth & Environmental Science).

**28** *Challenges to Higher Education: Faculty Perspectives on Our Shifting Landscape*; Daniel Hopkins, political science; Douglas Jerolmack, Earth & environmental science; Tukufo Zuberi, sociology; noon; Bodek Lounge, Houston Hall; register: <https://tinyurl.com/hard-promise-apr-28> (Living the Hard Promise).

**29** *States of Health: Federalism for Bioethics?* Leslie Francis, University of Utah; room 251, BRB; register: <https://tinyurl.com/francis-talk-apr-29> (Penn Medicine, Penn Carey Law).

*Executive Branch in Our Backyard: Presidential Impact in Hopkins' Home*; William Howell, Johns Hopkins University; 6 p.m.; online webinar; register: <https://events.jhu.edu/form/presidential-impact> (Paideia Program).

### Chemical & Biomolecular Engineering

Info: <https://events.seas.upenn.edu/calendar/tag/cbe/list/>.

**29** *Preventing, Understanding and Reducing End-Customers' Power Supply Outages with Digital Twins*; Panayiotis Moutis, City College of New York; 10:30 a.m.; room 225, Towne Building.

### Mathematics

Info: <https://www.math.upenn.edu/events>.

**23** *Mathematical Ideas in Lattice Based Public Key Cryptography: 30 Years Since NTRU*; Jill Pipher, Brown University; 3:30 p.m.; room A6, DRL.

**24** *Telescopic Stable Homotopy Theory*; Ishan Levy, University of Copenhagen; 3:30 p.m.; room 4C8, DRL.

More events can be found in the online version of this update. This is an update to the [April AT PENN calendar](#), which is online now. To submit events for the monthly AT PENN calendar or weekly calendar updates, email [almanac@upenn.edu](mailto:almanac@upenn.edu).

## Almanac

3910 Chestnut Street, 2nd floor  
Philadelphia, PA 19104-3111  
Phone: (215) 898-5274 or 5275  
Email: [almanac@upenn.edu](mailto:almanac@upenn.edu)  
URL: [www.upenn.edu/almanac](http://www.upenn.edu/almanac)

The University of Pennsylvania's journal of record, opinion and news is published Tuesdays during the academic year, and as needed during summer and holiday breaks. Its electronic editions on the Internet (accessible through the Penn website) include HTML, Acrobat and mobile versions of the print edition, and interim information may be posted in electronic-only form. Guidelines for readers and contributors are available on request and online.

EDITOR  
ASSOCIATE EDITOR  
ASSISTANT EDITOR  
EDITORIAL ASSISTANT  
STUDENT ASSISTANT

Alisha George  
Jackson Betz

ALMANAC ADVISORY BOARD: For the Faculty Senate: Sunday Akintoye, Christine Bradway, Daniel Cohen, Al Filreis, Cary Mazer, Martin Pring. For the Staff Assemblies: Jon Shaw, PPSA; Marcia Dotson, WPPSA; Rachelle R. Nelson, Librarians Assembly.

The University of Pennsylvania seeks talented students, faculty and staff from a wide variety of backgrounds, experiences, and perspectives. The University of Pennsylvania does not discriminate on the basis of race, color, sex, sexual orientation, religion, creed, national origin (including shared ancestry or ethnic characteristics), citizenship status, age, disability, veteran status or any other legally protected class status in the administration of its admissions, financial aid, educational or athletic programs, or other University-administered programs or in its employment practices. Questions or complaints regarding this policy should be directed to the executive director of the Office of Equal Opportunity Programs, 421 Franklin Building, 3451 Walnut Street, Philadelphia, PA 19104-6205, or (215) 898-6993.



## Data-Driven, Interactive Map Shows Local Economic Impact of Cuts to Federal Funding for Health Research

In the wake of sweeping cuts to federal funding for scientific research, including a proposal to reduce support for medical research nationwide, an interdisciplinary team of academic researchers from the University of Pennsylvania, University of Maryland, University of Utah, Georgia Institute of Technology, and University of Oregon have developed an interactive, data-driven map to communicate the impact these cuts would have at national, state and county levels.

The [Science & Community Impacts Mapping Project \(SCIMaP\)](#) communicates how proposed federal funding cuts lead to reduced economic activity and job losses nationwide. The SCIMaP team's analysis of across-the-board reductions to research infrastructure support for National Institutes of Health (NIH) grants, known as indirect costs, shows an estimated \$16 billion in economic loss and 68,000 jobs lost nationwide.

"The NIH funds crucial research to address leading health problems like cancer, diabetes, dementia, heart disease, infectious diseases, mental illness, and more," said Alyssa Sinclair, the Joan Bossert Postdoctoral Fellow at Penn's Annenberg Public Policy Center and co-leader of the project. Dr. Sinclair, who is also a postdoctoral fellow at the Communication Neuroscience Lab at the Annenberg School for Communication, added that research innovations have a big impact on our daily lives. "Research innovations directly improve our daily lives by curing and preventing diseases, unlocking new technologies, and improving the safety of our food, water and environments."

In recent years, more than \$35 billion in NIH-funded medical research has been made possible annually through grant support to universities, hospitals and research institutes in communities across the U.S.

"Science transforms our world; however, the process of doing science and the impacts of scientific research are often hidden from view," said project co-lead Joshua Weitz, a professor of biology and the Clark Leadership Chair in Data Analytics at University of Maryland with a joint appointment at the University of Maryland Institute for Health Computing. "Through interactive, data-driven visualizations, we aim to help Americans explore how science and health research fuels the economy, supports jobs and improves health outcomes."

Although less than 1% of the federal budget goes to the NIH, the investment has a big impact. The United for Medical Research coalition estimates that every \$1 invested in scientific research through the NIH produces \$2.56 in new economic activity, a more than 250% gain in investment. Further, NIH research supports over 400,000 jobs across the U.S. Research funded by the NIH has led to major breakthroughs, including prevention, treatment, and cures for cancer, heart disease and type 1 diabetes.

The proposed NIH federal funding cuts would greatly reduce the funding that covers the indirect costs of research already committed in grants. These funds pay for essential facilities, special equipment, skilled staff, and safety checks that are shared across many research projects. Currently, the effective indirect cost rate is approximately 42% at institutions nationwide. In February 2025, the NIH announced a policy to cut this by more than half, reducing indirect costs to a flat rate of 15%. Medical research would be slowed by drastic cuts in total research funding, according to Heather Pierce, senior director of science policy at the Association of American Medical Colleges, in a recent interview with *The New York Times*.

"Medical and scientific breakthroughs supported by the U.S. government impact all our lives," said Emily Falk, vice dean of Penn's Annenberg School for Communication and a professor in the school. "Research innovations are at the core of many things that enhance our daily lives and keep us safer."

She added that the U.S. government's investment in research has made the nation a leader in the world. "SCIMaP shows what's at stake for local economies and the future of innovation in our communities," Dr. Falk said.

In addition to Drs. Sinclair, Weitz and Falk, the interdisciplinary team behind SCIMaP includes Danielle Cosme (University of Pennsylvania), Mallory Harris (University of Maryland), Clio Andris (Georgia Institute of Technology), Angela Fagerlin (University of Utah), Ellen Peters (University of Oregon) and other researchers at institutions across the country.

The SCIMaP team sourced its data from a public database of NIH grants that were active in 2024 and estimated the economic impact of NIH grants (or reductions in NIH funding) based on a recent report from the United for Medical Research coalition. The team estimated the number of jobs that would be lost by a reduction in NIH funding by using the ratio of the number of jobs supported over the economic activity enabled in the 2024 fiscal year. The researchers also used census data on where U.S.

commuters live and work to estimate how economic loss in each county impacts adjacent counties.

Moving forward, the SCIMaP team plans to expand its analysis beyond the impacts of NIH cuts to assess the impacts of other threats to federally-supported research, including termination of research grants, cancellation of student-centered training programs, and a proposed reduction of up to \$6 billion of the National Science Foundation's \$9 billion budget.

*Adapted from a [Annenberg School for Communication \[research article\]\(#\)](#) by Meredith Rovine and Mandira Banerjee, April 3, 2025.*

## Weitzman Student & Alum Secure Designation of Penn's Oldest Property on Philadelphia Historic Register

The building that houses Penn's Greenfield Intercultural Center has been listed on the Philadelphia Register of Historic Places, thanks to a nomination authored by Ke-An Chiang, a Master of Science in Historic Preservation (MSHP) student at Weitzman.

Built circa 1845, the Reed-Hubley Residence, a three-story villa at 3708-12 Chestnut Street, is believed to be the oldest building owned by the University of Pennsylvania, outside of hospital properties.

Ms. Chiang conducted original historical research for the nomination in the fall 2023 semester of HSPV 6000: Documentation, Research, and Recording I, taught by Francesca Ammon, an associate professor of city and regional planning and historic preservation; Kecia Fong, a senior lecturer in historic preservation; and the late Aaron Wunsch, an associate professor of historic preservation.

The instructors then passed Ms. Chiang's final paper on to Amy Lambert, a preservation alumna from 2016 who serves as the board president of the University City Historical Society (UCHS). UCHS sponsored the nomination for submittal to the Philadelphia Historical Commission, which voted unanimously to designate the property on March 15.

Site designation is one of the fundamental tools of historic preservation at the local, state, and national levels. Nominations document the historic significance of their subject property and, if approved, can afford those properties protections going forward.

Developing historical arguments for the significance of sites is the core of the Documentation I course. In her nomination, Ms. Chiang argues that the structure merited designation because it stylistically reflects a suburban aesthetic preference during a rapidly industrializing period and exemplifies the moment Greek Revival architecture began to turn toward the Italianate.

Further, she argues that it is emblematic of the changing social history as the area developed as a "streetcar suburb" in the late 1800s, a new urban form enabled by the burgeoning technology of rail-borne horse-drawn streetcars. Ms. Chiang combined original deed research at the City Archives with historic newspapers to craft a narrative about the people who occupied 3708 Chestnut Street.

"I live on Chestnut Street, so I saw that building a lot," Ms. Chiang remembers. "But I never thought that I could dig into the history so much and find an argument for the building. I did have fun in putting all these together."

"Documentation I is a foundational course for all historic preservation students," noted Dr. Ammon. "Whether they intend to focus on materials-based conservation, adaptive or new designs in historic settings, preservation planning, or the public history side of the field, our graduates will all need to know how to research the history of a building, site, or neighborhood. This course equips them with the archival research skills to establish that starting point."

Each year, course instructors select a focus neighborhood in Philadelphia. The properties studied by the class in 2023 were clustered around Spruce Hill, a West Philadelphia neighborhood with the largest intact collection of Victorian architecture in the country.

According to Ms. Chiang's research, E.B. Hubley was the son of the building's second owner. His art supply shop by the Schuylkill River and connection to the famed painter Charles Willson Peale created a coherent narrative about an artistic family.

To illustrate the structure's rich social history in her nomination, Ms. Chiang included an advertisement for E.B. Hubley's art supply business. While preparing the nomination for submission, Ms. Lambert noticed a significant name within Ms. Chiang's detailed chain of title: Rubens H. Peale. After further digging, Ms. Lambert discovered that the Hubley family were related by marriage to the renowned artist Charles Willson Peale. Including this connection in the final document gave further meaning to the social history of the site and demonstrates the collaborative nature of the work Ms. Chiang and UCHS did.

*Adapted from a [Weitzman School of Design news release](#) by Laney Myers, March 27, 2025.*