



Wherever this symbol appears, images are available on our website, almanac.upenn.edu/at-penn-calendar

ACADEMIC CALENDAR

- 2** Spring Term Break. Through March 10.
11 Classes Resume.
18 Advance Registration for Fall Term and Summer Sessions. Through March 31.

CHILDREN'S ACTIVITIES

- 1** Storytime at the Arboretum; fun and engaging reading sessions with local librarians; 10:30 a.m.; free w/admission; register: <https://tinyurl.com/y3dvk3cf> (Morris Arboretum).
Dance Theatre of Harlem; Student Discovery Series for grades K-12; 10:30 a.m.; Zellerbach Theatre, Annenberg Center; tickets and info: www.annenberg-center.org (Annenberg Center). Also see On Stage.
16 Shaun the Sheep; animated film; 2 p.m.; Lightbox Film Center, IHP; tickets: <https://lightboxfilmcenter.org/programs/shaun-the-sheep5> Also see Films.

Penn Museum

- Tickets: www.penn.museum/
5 Exploring Aesop's Fables; for families with children ages 3 to 6; 10:30 a.m.; \$10/one adult one child, \$5/members one adult one child, \$2/each additional children; tickets: <http://tinyurl.com/y4wt6oek>
9 Music of the World; explore the galleries on a family friendly tour, design your own drum and pick up a scavenger hunt; 11 a.m.-4 p.m.; free w/admission.

CONFERENCES

- 1** Penn Laser Symposium; 8 a.m.-5 p.m.; register: www.dental.upenn.edu/pennlaser2019 (Penn Dental).
7 The Global Turn in Medieval Studies; annual meeting of the Medieval Academy of America; 10 a.m.-8 p.m.; various locations; info: <http://tinyurl.com/ybpxkxzx> (Center for Italian Studies). Through March 9.
14 Is Russia Undermining Democracy in the West?; 9 a.m.-5:30 p.m.; rm. 250, PCPSE; register: <https://tinyurl.com/y6sr9k9u> (Foreign Policy Research Institute, Russian and East European Studies, Penn-Temple European Studies Colloquium).
16 TEDxPenn; a TED conference with the polysemic theme of "AND"; 1 p.m.; Irvine Auditorium; tickets: [www.tedx-penn.com](http://tedx-penn.com) (Wharton, Nursing, Engineering, SAS).
22 State of Asian American Studies: Undergraduate Advisory Board Conference; 9 a.m.; <https://tinyurl.com/y7y-azqap> (ASAM).
The Stuff We Carry; annual undergraduate conference; 9 a.m.-3:15 p.m.; rm. 623, Williams Hall; info: <https://wolfhumanities.upenn.edu/events/stuff-we-carry> (Wolf Humanities).
27 South x Southeast; 5 p.m.; Annenberg School for Communication; info: www.cargcsouthbysoutheast.com Through March 28 (ASC).
28 Kittler and the Human(ities): Rethinking the Human, the Humanities & the Legacy of German Media Theory; 4-7:30 p.m.; Van Pelt-Dietrich Library; info: <https://tinyurl.com/y42x33ps> Through March 29 (Germanic Languages and Literatures).
29 Whitman at 200: Looking Back, Looking Forward; 4-7:30 p.m.; Class of 1978 Orrery Pavilion, Van Pelt-Dietrich Library; info: <https://tinyurl.com/y7jzovjb> Through March 30 (Kislak Center).
30 Meeting the Oral Health Needs for People with Disabilities; 8 a.m.-1 p.m.; Cheung Auditorium, Schattner Center; register: <https://tinyurl.com/yqcqf63le> (Penn Dental).

EXHIBITS

Admission Donations and Hours

- Arthur Ross Gallery (ARG); Fisher Fine Arts Library; free; hours: www.arthurrossgallery.org
Brodsky Gallery, Kelly Writers House; free; hours, info: <http://writing.upenn.edu/wh/involved/series/brodskygallery/>



TAK Ensemble (above) will perform Penn Sound Collective works. See Music.

- Burrison Gallery, Inn at Penn; free; Mon.-Fri., 7:30 a.m.-5 p.m.; <http://tinyurl.com/kaevlec>
Esther Klein Gallery; free; Mon.-Sat., 9 a.m.-5 p.m.; <http://estherkleingallery.tumblr.com>
ICA; free; hours: <https://licaphila.org>
International House Philadelphia; free; hours: <http://ihousephilly.org>
Kroiz Gallery, Fisher Fine Arts Library; free; Mon.-Fri., 10 a.m.-4 p.m.; info: <http://tinyurl.com/hvrlct4>
Morris Arboretum; hours, prices: morrisarboretum.org
Penn Museum; \$15/adults; \$13/seniors; \$10/children; free/members, PennCard holders and children under 5; Tues.-Sun, 10 a.m.-5 p.m.; first Wed., 10 a.m.-8 p.m.; www.penn-museum.org
Slought; free; Tues.-Fri., noon-5 p.m.; info: slought.org
Van Pelt-Dietrich Library; free; hours: info: <http://www.library.upenn.edu/vanpelt>
Wistar; Mon.-Fri., 9 a.m.-5 p.m.; info: <https://wistar.org>

Upcoming

- 8** Spots of Time; woodcuts by John D. Taylor; opening reception: 5 p.m.; Burrison Gallery. Through April 12.
12 Patrick Dougherty Installation Creation; three weeks of building site-specific abstract sculpture; Morris Arboretum. Weekdays through March 28; 10 a.m.-4 p.m.
30 Patrick Dougherty Installation; viewing of stickwork and sapling sculpture; grand opening celebration: 11 a.m.; Morris Arboretum. Ongoing.

Now

- And So the Story Goes: Innovations in Storytelling; Penn Museum. Through March 3.
Here on Earth; photography by Barbara Barbour of her travels around the world; Burrison Gallery. Through March 6.
Lens on Latin America; innovative photography inspired by themes emerging from Latin America during the 60s and 70s; IHP. Through March 22.
Citizen Salon; crowd-sourced exhibit; Arthur Ross Gallery. Through March 24.
Print Show: Alyson Del Pino, Bronwyn Katz, and Heidi Lee; Brodsky Gallery, Kelly Writers House. Through March 29.
In Search of Meaning: Memory Becomes Us; Patricia Moss-Vreeland's work illuminates the role memory plays in relation to who we are; Esther Klein Gallery. Through March 30.
Cecilia Vicuña: About to Happen; insight into the evolution of her practice through a range of landmark works; ICA. Through March 31.
Colored People Time: Mundane Futures; explores ways in which the history of slavery and colonialism permeates the present and impacts the future; ICA. Through March 31.
The Image-Event: A Joint Struggle; photographic archive comprised of Palestinian, Israeli and international activist-photographers; Slought. Through March 31.
Photography of Paul W. Meyer: A Plantsman in Asia; upper gallery, Widener Center, Morris Arboretum. Through March 31.
Nikon Small World Exhibition; the top 20 winning images from the 2018 Nikon Small World Photomicrography Competition; Wistar Institute. Through April 5.
Matthew J. Miller and Gabriel Miller: Black Urbanism: YR-001; photography exhibit; Lobby Mezzanine, Meyer-son Hall. Through April 8.
Thomas Evans and the Professional Press; a collection of dental printed works; Leon Levy Dental Medicine Library. Through April 12.
Wise Men Fish Here; honoring Frances Steloff and her famous bookshop; Kamin Gallery, Van Pelt-Dietrich Library. Through May 20.
Musical Partnerships at Play: The Marlboro Music School and Festival; Eugene Ormandy Gallery, Van Pelt-Dietrich Library. Through June 21.

- Introducing Tony Conrad: A Retrospective; six decades of sculpture, painting, video, performance, film and installation; ICA. Through August 11.
Bearing Witness: Four Days in West Kingston; sheds light on the 2010 stand off between Jamaican security forces and a drug trafficker, resulting in civilian death; Penn Museum. Through December 2.
Moundbuilders: Ancient Artifacts of North America; explores Native American moundbuilding through artifacts, archival materials and excavation records; Penn Museum. Through December 2.
Ancient Egypt: From Discovery to Display; behind-the-scenes view of artifact storage and active conservation of Museum objects; Penn Museum.

Ongoing

- Audubon's Birds of America; 1st Floor, Van Pelt-Dietrich Library.
Imagery, Narrative, Propaganda: Artists in the German Democratic Republic; rm. 500, Annenberg School.
Marian Anderson on the World Stage; Marian Anderson Gallery, Van Pelt-Dietrich Library.
Middle East Galleries; ancient Mesopotamian societies that gave rise to the world's first cities; Penn Museum.
Native American Voices: The People—Here and Now; Penn Museum.
Out of Time; 12 photos or paintings by artists and dancer Raphael Xavier; Lobby, Annenberg Center.
People, Plants & Place: The Story of Morris Arboretum; lower gallery, Morris Arboretum.
We Are Not Alone; exhibit of 10 large-scale illustrations by cartoonist and freelance writer Dwayne Booth; Forum, Annenberg School.
Penn Museum Tours
Info: www.penn-museum/visit/tours
Gallery Tours; Saturdays-Sundays; 1:30 p.m.; free w/admission.
Global Guides Public Tours; Saturdays-Sundays; 2:30 p.m.; free w/admission.
Highlights Tour: Mandarin Language; Fridays; 2:30 p.m.; free w/admission.

FILMS

- 13** Women in Sci Fi Movie Series: The Hunger Games; 5 p.m.; Visualization Space, Education Commons (Libraries).
29 Concerning Violence; 6 p.m.; Slought; register: slought.org/resources/concerning-violence (Slought, SP2, Cinema & Media Studies).
Bioethics Film Festival
IHP; 6 p.m.; reception: 5:30 p.m.; free. Tickets: www.pennbioethicsfilmfest.org
26 M*A*S*H.
27 The Hospital.
28 One Flew Over the Cuckoo's Nest.

Lightbox Film Center at IHP

- Info and tickets: <https://lightboxfilmcenter.org/>
1 Deep Dive: Third Cinema; 6 p.m.
El Cine Quema: Program 1; featuring The Land Burns; Pottery Makers, and Mexico. The Frozen Revolution; 7 p.m.
2 El Cine Quema: Program 2; featuring It Happened in Hualfín, Swift, and The A.A.A. are the Armed Forces; 5 p.m.
El Cine Quema: Program 3; featuring They Kill Me if I Don't Work, and If I Work, They Kill Me, and The Traitors; 8 p.m.
14 What is Democracy?; 7 p.m.
15 I Am Cuba; 7 p.m.
16 Shaun the Sheep; 2 p.m. Also see Children's Activities.
The Unorthodox; Israeli Film Festival of Philadelphia; 8:30 p.m. Through March 17.
21 Spring Night, Summer Night; 7 p.m.
29 Dragnet Girl; 7 p.m.

Wolf Humanities Center

- Info: <https://wolfhumanities.upenn.edu/>
10 Terra Femme: Women and the Travelogue Archives; 2 p.m.; Rainey Auditorium, Penn Museum.
22 Sorry to Bother You; 4 p.m.; ICA.

MEETINGS

- 12** WPPSA Board Meeting; 12:30 p.m.; rm. 201, B Wing, 3401 Walnut St.
14 PPSA Board Meeting; 1 p.m.; Duhring Wing; RSVP: ppsa@lists.upenn.edu
20 WXPN Policy Board Meeting; noon; 3025 Walnut St.; info: (215) 898-0628.
27 University Council Meeting; members of the University Community invited to attend provided they register with the Office of the Secretary: (215) 898-7005; 4 p.m.; Bodek Lounge, Houston Hall.

MUSIC

- 9** Jandek; IHP; 8 p.m.; tickets: <https://lightboxfilmcenter.org> (Lightbox Film Center).
13 The United States Army Field Band & Soldiers' Chorus; 7 p.m.; Irvine Auditorium; tickets: armyfieldband.com/tickets (Perelman Quad).
Annenberg Center
Tickets: www.annenbergcenter.org
13 The Chamber Orchestra of Philadelphia: Call and Response; 7:30 p.m.; Harold Prince Theatre.
23 The New Lionel Hampton Big Band; 8 p.m.; Zellerbach Theatre.



Dance Theatre of Harlem performs at Annenberg Center. See On Stage.

Department of Music

- Info: www.sas.upenn.edu/music/
16 PSC + TAK Ensemble; 8 p.m.; rm. 208, ARCH.
20 Marian Anderson Performance Program Recital; 8 p.m.; Rose Recital Hall, Fisher-Bennett Hall.
21 John Cage: Sonatas and Interludes; Amy Williams, composer; 8 p.m.; University Lutheran, 3637 Chestnut St.
30 CAMRA Media Festival Performance; 5:15 p.m.; Rose Recital Hall, Fisher-Bennett Hall.

World Cafe Live

- Performances daily. For a complete listing, see: <http://philly.worldcafelive.com/>

ON STAGE

- 15** The Book of Mermen; Mask and Wig's 131st Annual Production, an unforgettable, underwater musical; 8 p.m.; The Mask and Wig Club House; 310 S. Quince St.; \$35/adults, \$15/students; tickets: www.maskandwig.com/ Also March 16, 22, 23, 29; March 30, 6 and 9 p.m.
Annenberg Center
Info and tickets: www.annenbergcenter.org/events/
1 Abbey Theatre: Two Pints; Philadelphia premiere of the hilarious Roddy Doyle play; 8 p.m. Blarney Stone, 3929 Sansom St. Also March 3, 3 and 7 p.m.
Dance Theatre of Harlem; world premiere of a Robert Garland work; 8 p.m.; Zellerbach Theatre. Also March 2, 2 and 8 p.m.
7 Vessels; seven women explore music of the Middle Passage; 8 p.m.; Harold Prince Theatre. Also March 8 and 9, 8 p.m.; March 10, 7 p.m.
15 Dance Heginbotham; NY-based contemporary dance troupe; 8 p.m.; Harold Prince Theatre. Also March 16, 2 p.m.
16 Michael Londra and the Celtic Fire; lively evening of Irish music and step dancing; 8 p.m.; Zellerbach Theatre.

READINGS AND SIGNINGS

- 21** The Anatomy of a Tenure Case; Stephen Senturia; noon; Hourglass Room, Inn at Penn (University Club).
Kelly Writers House
All events located in Arts Café.
Info: www.writing.upenn.edu/wh
RSVP: wh@writing.upenn.edu
11 Lunch with Madeline Miller; noon.
12 Lunch with Nova Ren Suma; noon.
13 Zine Rave; 6 p.m.
Speakeasy Open Mic Night; 7:30 p.m.
14 A Conversation with Tamara Jenkins; 6 p.m.
18 Live at the Writers House; 7 p.m.
19 Your Language, My Ear: Readings; 6 p.m.
20 Ahmad Almallah and Tom Sleigh; 6 p.m.
21 City Planning Poetics 7: Carceral Justice; Emily Abendroth and Keith Reeves; 6 p.m.
25 Mei-Mei Berssenbrugge; 6:30 p.m.
26 A Brunch Conversation with Mei-Mei Berssenbrugge; 10 a.m.
27 Lunch with Emily Jane Fox; noon.
28 Bottoms on Top: A DP Podcast; noon. RealArts@Penn Presents A Conversation with Eric Andersen; 5 p.m.

Penn Bookstore

- All events take place at Events Room, Penn Bookstore.
13 A Human's Guide to Machine Intelligence; Kartik Hosanagar, Wharton; 5:30 p.m.
20 Juliet's School of Possibilities; Laura Vanderkam, alumna; 6 p.m.
21 Philadelphia: The War Years; Peter John Williams, author; 6 p.m.

Penn Book Center

- Info: www.pennbookcenter.com/event
5 Foucault in California; David Wade and Eduardo Mendieta; 6:30 p.m.
6 All But True; Michael Cocchiarale and Chris Ludovici; 6:30 p.m.
7 Now, Now Louison; Jean Frémon and Cole Swensen; 6:30 p.m.
11 La Novela de Vibia P (en español); Milagros Alameda-Irizarry; 6 p.m.
14 Archaeology at the Site of the Museum of the American Revolution; Rebecca Yamin; 6:30 p.m.
15 Readings by Shelly Brivic & Barbara Barrow; 6 p.m.
16 Poetry Reading; Thea Brown, Jane Lewty & Christy Davids; 2:30 p.m.

- 19** Fables and Futures: Biotechnology, Disability, and the Stories We Tell Ourselves; George Estreich; 6:30 p.m.
20 Frankétienne & Asselin Charles in conversation with A. Véronique Charles; 6 p.m.
21 Sympathy for the Traitor; Chris Clarke; 6:30 p.m.
25 A People's History of Heaven; Mathangi Subramanian; 6:30 p.m.
28 Bryan Washington in Conversation with James Ijames; 7 p.m.

SPECIAL EVENTS

- 16** Printmaker Pop-Up Market; Philly-based printmakers set up shop with works for sale; noon-3 p.m.; Arthur Ross Gallery.
20 Energy Reduction Challenge Day; 24-hour campus-wide challenge where percentage reduction in energy use is converted into a monetary donation to CURF; part of Power Down Challenge, March 18-22; info: www.sustainability.upenn.edu/participate/penn-community/power-down-challenge (Penn Sustainability).
Penn Museum
Info: www.penn-museum/
9 Member Appreciation Day; 10 a.m.-5 p.m.; tour museum and lab facilities, including new 3D printing technology; free/members.
CAAM Up-Close: A Virtual Tour; behind the scenes of the Center for the Analysis of Archaeological Materials through an onsite virtual tour; 10:30 a.m.; Penn Museum; free/members; register: <https://tinyurl.com/y4lydcpl>
28 Penn Students: Escape the Museum; students can solve clues, answer riddles and escape from one gallery to the next; 7 p.m.; free w/PennCard.
30 Nowruz Festival; ancient festival marking the beginning of spring; 1-8 p.m.; free w/admission from 1-5 p.m.; \$15, \$10/members from 5-8 p.m.

SPORTS

- 1** (W) Basketball vs. Harvard; 7 p.m.
2 (W) Lacrosse vs. Yale; 1 p.m.
(W) Basketball vs. Dartmouth; 6 p.m.
5 (W) Lacrosse vs. Drexel; 3 p.m.
8 (M) Basketball vs. Yale; 7 p.m.
9 (W) Lacrosse vs. Georgetown; 1 p.m.
(M) Basketball vs. Brown; 6 p.m.
10 (M) Tennis vs. Clemson; 11 a.m.
(M) Tennis vs. Drexel; 2 p.m.
16 (M) Heavyweight Crew hosts Stan Bergman Class Day Races; TBA.
Baseball vs. Fairleigh Dickinson; noon.
(W) Tennis vs. Temple; noon.
(W) Lacrosse vs. Duke; noon.
(M) Lacrosse vs. Princeton; 3 p.m.
17 (M) Tennis vs. Delaware; 10 a.m.
(M) Tennis vs. Temple; 3 p.m.
23 Baseball vs. Harvard; 11:30 a.m.
(W) Lacrosse vs. Cornell; 1 p.m.
(W) Tennis vs. St. John's; 1 p.m.
Track hosts Penn Challenge; TBA.
24 Baseball vs. Harvard; 1 p.m.
30 (M) Lightweight Crew vs. Delaware/MIT; TBA.
Baseball vs. Brown; 11:30 a.m.
(W) Tennis vs. Princeton; 1 p.m.
(M) Lacrosse vs. Yale; 1 p.m.
31 Baseball vs. Brown; 1 p.m.

Almanac

3910 Chestnut St., 2nd Floor
Philadelphia, PA 19104-3111
(215) 898-5274 or 5275 FAX (215) 898-9137
Email: almanac@upenn.edu
URL: www.upenn.edu/almanac

Unless otherwise noted, all events are open to the general public as well as to members of the University. For building locations, call (215) 898-5000, or see www.facilities.upenn.edu or the University's website, www.upenn.edu A phone number normally means tickets, reservations or registration required.
Almanac carries an Update with additions, changes & cancellations if received by Monday at noon for the following week's issue. University members may send notices for the Update or April AT PENN calendar.
Events on this calendar are subject to change. More information can be found on the sponsoring department's website. Sponsors are listed in parentheses.

TALKS

1 *Scale-Dependent Plasticity and Nanoindentation Creep of Geologic Materials*; Christopher Thom, EES; 1 p.m.; rm. 358, Hayden Hall (Earth & Environmental Science).

Polyvocal Poetry: Sound and Resound; Randall Couch, author; 6:15 p.m.; Class of 1978 Pavilion, Van Pelt-Dietrich Library (Penn Libraries).

4 *Neuronal Primary Cilium, a Centralized Signaling Hub for Neuronal Morphology and Connectivity*; Jiami Guo, Alberta Children's Hospital Research Institute; noon; rm. 10-146, Smilow Center (Systems Pharmacology and Translational Therapeutics).

6 *The Stuff of Legend: Early 19th Century Excavations at Nippur*; Richard Zettler, Near Eastern Languages & Civilizations; 6 p.m.; Penn Museum; tickets: \$10, \$5/members; register: www.penn.museum (Museum).

7 *Understanding and Augmenting the Immune Microenvironment in Lung Cancer*; Edmund Moon, PSOM; 4 p.m.; rm. 11-146, Smilow Center (Penn Center for Pulmonary Biology).

9 *Beyond the Naked Eye: Revisiting Ancient Maya Cities with 3D Archaeology*; Heather Richards-Rissetto, University of Nebraska; 3 p.m.; Penn Museum; free w/admission (Museum).

The Amarna Revolution From Above: Case Studies; Betsy Bryan, Johns Hopkins University; 3:30 p.m.; Penn Museum; \$10, \$7/members and PennCard holders, \$5/students, free/ARCE-PA members and children under 12 (Museum).

10 *Terra Femme: Women and the Travelogue Archives*; Courtney Stephens, filmmaker; 2 p.m.; Penn Museum (Wolf Humanities Center, Cinema and Media Studies, Alice Paul Center).

11 *The Global System and its Instability*; Mauro Guillen, Wharton; noon; rm. 345, Penn Museum (Anthropology).

Missing Link: Nikolai Vavilov's Genogeography and History's Past Future; Elena Aronova, UC Santa Barbara; 3:30 p.m.; rm. 337, Cohen Hall (HSS).

12 *Autophagy and Immunity in Cancer Initiation and Progression*; Jorge Moscat, Sanford Burnham Prebys Medical Discovery Institute; noon; Caplan Auditorium, Wistar Institute (Abramson Family Cancer Research Institute).

Brazilian Politics and Voting; David Samuels, University of Minnesota; noon; Forum Room, PCPSE (LALSES).

Biomaterials Based Strategies for Repair of Rotator Cuff Tendon and Muscle; Johnna Temenoff, Emory; 1:30 p.m.; CRB (PCMD).

Religion and the Future Lives of Women; Megan Robb, religious studies; 3 p.m.; rm. 286-7, McNeil Bldg. (Center for Advanced Judaic Studies, SAS Dean's Office, PWH, Religious Studies).

Crossing the Rubicon: Non-Canonical Autophagy Mediates the Inflammatory Response; Jennifer Martinez, NIH; 4 p.m.; Austrian Auditorium, BRB (Immunology).

13 *Arnheim's Media Theory: From Formalism to Gestalt Ontology*; Ian Verstegen, visual studies; noon; rm. 330, Fisher-Bennett Hall (Cinema Studies).

Predicting and Controlling Stability and Protein-Protein Interactions for Therapeutic Antibodies; Christopher Roberts, University of Delaware; 3 p.m.; Wu and Chen Auditorium, Levine Hall (CBE).

Companions in Etale Cohomology; Kiran Kedlaya, University of California San Diego; 3:30 p.m. (tea at 3 p.m.); rm. A2, DRL (Mathematics).

Engineering "Heart on a Chip" Platforms for Cardiac Disease Modeling; Megan McCain, USC; 4 p.m.; rm. 11-146, Smilow Center (CVI).

Tectonic Shifts in the Histories of Yoga and Ayurveda; Dominik Wujastyk, University of Alberta; 4:30 p.m.; Class of '55 Room, Van Pelt-Dietrich Library (South Asian Studies).

14 *Innovation on Standby: Political Pitfalls, Economic Uncertainty, and Scientific Frustrations in Brazilian Computer Innovation*; Beatrice Choi, Northwestern University; noon; 6th floor, 3901 Walnut St (Annenberg School).

Paleography; Catherine Innes-Parker, University of Prince Edward Island; noon; rm. 623, Van Pelt-Dietrich Library (English).

The Heritage-Scape Revisited: Towards the Development of a More Inclusive UNESCO World Heritage Program;



The lecture *An Art Journey* with David C. Driskell will be held March 21. See Talks.

TALKS

Michael A. Di Giovine, West Chester University; 12:30 p.m.; Penn Musuem; free (Museum).

New Small Biological Molecules; Alan Saghetalian, Salk Institute; 3 p.m.; Carolyn Hoff Lynch Lecture Hall, Chemistry Bldg. (Chemistry).

At-large Pilot Grants; Eric Joyce, Rajan Jain, Melike Lakadamyali, Maya Capelson, Kathryn Wellen, PSOM; 4 p.m.; rm. 9-146, Smilow Center (Epigenetics).

Art and Politics, From Graphic to Cinema; Marjane Satrapi, filmmaker and author; 4:30 p.m.; Zellerbach Theatre, Annenberg Center; register: <https://tinyurl.com/y5hzcq9> (SAS).

Empire of Neglect: The West Indies in the Wake of British Liberalism; Christopher Taylor, English; 4:30 p.m.; rm. 330, Fisher-Bennett Hall (English).

Variability is the Spice of Life; Jon Henner, University of North Carolina, Greensboro; 5 p.m.; rm. 200, College Hall (Wolf Humanities, Deaf-Hearing Communication Centre).

Dante's Convivio: The Creation of a Cultural Icon; Beatrice Arduini, University of Washington; 5:30 p.m.; rm. 625, Van Pelt-Dietrich Library (Italian Studies).

15 *The Vital Element: Water as Moral Substance in Chilean Patagonia*; Carlota McAllister, York University; noon; Silverstein Forum, Stiteler Hall (LALSES).

Foreign and Familiar: Japan and the Visual Language of Anthropology at the World's Colombian Exposition; Serena Qiu, history of art; 3:30 p.m.; rm. 113, Jaffe Bldg. (History of Art).

18 *Antimicrobial Resistance: Evolutionary Tales from the Protein Data Bank*; Stephen Burley, Rutgers; noon; rm. 10-146, Smilow Center (Systems Pharmacology and Translational Therapeutics).

Grassroots Organizing Against Sexual Violence in the Era of #MeToo; panelists discuss movements fighting sexual violence; noon; Perry World House; Register: <http://tinyurl.com/y4jgk62u> (Alice Paul Center).

The Earned Income Tax Credit and Parent-Child Time Use; Taryn Morrissey, American University; noon; rm. 103, McNeil Bldg. (PSC).

The RSS: Evolution of India's Leading Hindu Nationalist Organization; Walter Andersen, Johns Hopkins University; noon; Ste. 230, PCPSE (CASI).

A Berlin Ensemble: Natural Scientists, Radio Engineers, Musicians, and the Trautonium; Myles Jackson, Institute for Advanced Study; 3:30 p.m.; rm. 337, Cohen Hall (HSS).

A Journey to a Vision for the Future of Nursing and Healthcare; Elias Provencio-Vasquez, University of Colorado; 4 p.m.; rm. 435, Fagin Hall; register: www.nursing.upenn.edu/calendar (Nursing).

Printing the Urdu Public: Madinah Newspaper, Muslims and Urban Life in South Asia, 1900-1947; Megan Robb, religious studies; 5:15 p.m.; Class of 1978 Pavilion, Van Pelt-Dietrich Library (English).

Beyond Complete Streets; Tamika Butler, Los Angeles Neighborhood Land Trust; 6 p.m.; rm. B3, Meyerson Hall (Design).

Recent Work; Elizabeth Diller, Princeton; 6:30 p.m.; Lower Gallery, Meyerson Hall (Design).

19 *Mechanisms for Maintaining Genome Stability*; Karlene Cimprich, Stanford; noon; Gaulton Auditorium, BRB II/III (Abramson Family Cancer Research Institute).

Religion and Climate Change; Evan Berry, American University; 3 p.m.; rm. 286-7, McNeil Bldg. (Center for Advanced Judaic Studies, Dean's Office, PWH, Religious Studies).

Hitch Your Wagon to a Star: A 50 Year Perspective on the Central Role of Glucokinase in Glucose Homeostasis; Franz Matschinsky, biochemistry and biophysics; 4 p.m.; rm. 12-146, Smilow Center (IDOM).

Controllers as Buyers: Has the MFW Framework Struck a Sensible Balance; Leo Strine, Delaware Supreme Court Chief Justice; Dan Burch, MacKenzie Partners, Inc.; Eduardo Galarido, Gibson Dunn & Crutcher LLP; Daniel Lee, Moelis & Company; and Christine Mackintosh, Grant & Eisenhower, P.A.; 4:30 p.m.; rm. S240B, Silverman Hall (Penn Law).

TALKS

A Mahzor is a Mahzor is a Mahzor?: Studying CAJS Rare MS 382; Elisabeth Hollender, Goethe Institute Frankfurt; 5 p.m.; Class of 1978 Pavilion, Van Pelt-Dietrich Library (Jewish Studies).

Trans Literacy Project Seminar on Supporting Trans Youth; discussion of approaches to support, advance, and prioritize trans youth; 5:30 p.m.; LGBT Center; register: <http://tinyurl.com/y4qpt-bld> (Alice Paul Center).

Design and the Public Scholar; Nancy Levinson, journalist; 6:30 p.m.; Dean's Alley, Meyerson Hall, 210 S. 34th Street (PennDesign).

20 *The Politics of Resistance to Criminal Victimization in Latin America*; noon; Eduardo Moncada, Barnard College; noon; Forum, PCPSE (LALSES).

Some Uses and Misuses of Equilibrium Thermodynamics; Eduardo Glandt, CBE; 3 p.m.; Wu and Chen Auditorium, Levine Hall (CBE).

Coherent Neutrino Scattering; Kate Scholberg, Duke; 4 p.m.; rm. A8, DRL (Physics & Astronomy).

Energy Economics & Finance Seminar; Mathias Reynaert, Toulouse School of Economics; 4 p.m.; rm. 306, Fisher Fine Arts (Kleinman Center).

Ensuring the Cardiovascular System Has Something to Work With: Building and Rebuilding the Lungs; Edward Morrissey, PSOM; 4 p.m.; rm. 11-146, Smilow Center (CVI).

Cave 10, Ellora: Excavating an Artisanal History of Vishwakarma; Ken George and Kirin Narayan, Australian National University; 4:30 p.m.; Class of '55 Room, Van Pelt-Dietrich Library (South Asia Center).

Architecture Can!; Matthias Hollwich, Hollwich Kusher; 6:30 p.m.; Lower Gallery, Meyerson Hall (Design).

21 *From Me to We: Searching for the Genetic Roots of Sociality*; Gene Robinson, University of Illinois, Urbana-Champaign; 4 p.m.; Rubenstein Auditorium, Smilow Center (Systems Pharmacology and Translational Therapeutics).

To Heal the Body, to Persuade the Mind: the Relationship between Erotomania, Melancholy, and Nostalgia in Renaissance Culture; Massimo Ciovolella, UCLA; 5:30 p.m.; rm. 625, Van Pelt-Dietrich Library (Italian Studies).

An Art Journey; David C. Driskell, artist; 6 p.m.; Arthur Ross Gallery; register: <https://tinyurl.com/y937fg> (ARG).

22 *An Alaskan Perspective on the Evolution of the Arctic*; Justin Strauss, Dartmouth; 2 p.m.; rm. 358, Hayden Hall (Earth & Environmental Science).

Reconstructing and Recontextualizing Alvin Langdon Coburn's Vortographs; Jeff Katzin, history of art; 3:30 p.m.; rm. 113, Jaffe Bldg. (History of Art).

25 *Causes of Death: Social Inequalities and Racial Disparities in Health*; Davie Chae, Auburn University; noon; rm. 103, McNeil Bldg. (PSC).

Identification Robust Inference for Risk Prices in Structural Stochastic Volatility Models; Paul Sangrey, economics; noon; rm. 100, PCPSE (Economics).

Catastrophic Thinking in Science and Culture, or, How We Learned to Start Worrying and Fear Mass Extinctions;

1 *New Patient Admissions Fair*; 9:30 a.m.-2:45 p.m.; receive free x-rays and more; call (215) 898-8965 for appointment, walk-ins welcome upon availability; Penn Dental Medicine (Penn Dental).

10 *Spring Break Skate*; 1-2 p.m.; buy one admission, get one free; Penn Ice Rink (Penn Ice Rink).

13 *Research Tea*; Solomon H. Katz, World Recipe Project; 3 p.m.; Meyerson Conference Room, Van Pelt-Dietrich Library (Diversi-Tea).

14 *Whitman Community Print Night*; learn to crank the presses while printing broadsides and posters celebrating Whitman's poetry; 6-8 p.m.; Common Press, Fisher Fine Arts Library (Penn Libraries; Common Press).

19 *PPSA Presents: Coffee and Bagels Meet 'n' Greet*; 8 a.m.; Reading Room, Houston Hall (PPSA).

Discussion of The Stargazer's Sister: A Novel by Carrie Brown; 1 p.m.; Meyerson Conference Room, Van Pelt-Dietrich Library (Penn Book Talk).

Arthur Ross Gallery
Info: www.arthurrossgallery.org

6 *12@12*; gallery talks in 12 minutes; noon.

13 *Art + Data Hack-A-Thon*; data analysis workshop with Citizen Salon responses and artwork metadata; 1-7 p.m.

HR: Penn Healthy You Workshops
Open to faculty and staff; free. Register: www.hr.upenn.edu/registration

4 *Financial Planning for College Workshop*; noon.

6 *Chair Yoga*; noon.

7 *Gentle Yoga*; noon. Also March 21.

11 *Spin*; 11:30 a.m.

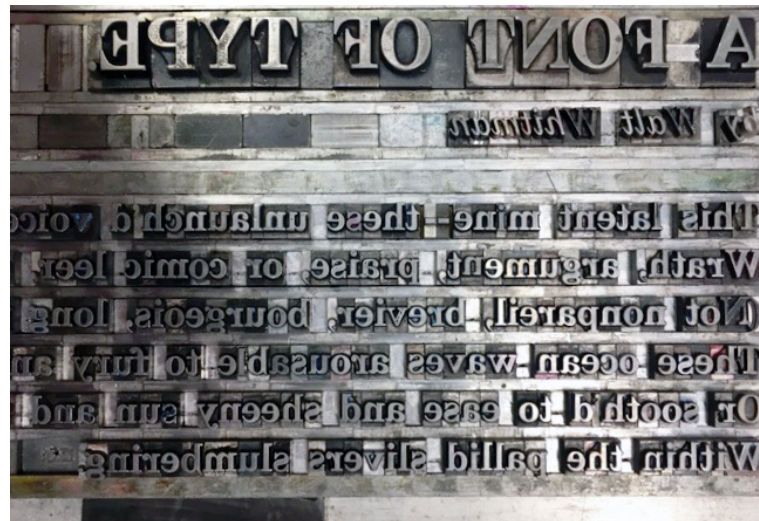
12 *Get to Know What Is Healthy at Houston Market Tour*; 11:30 a.m.

18 *Be in the Know Biometric Screenings*; 9 a.m.-1 p.m.; Hall of Flags, Houston Hall.

20 *Oral Health 101: All You Want to Know About Your Teeth and More*; noon.

28 *Bodycombat*; noon.

29 *March Wellness Walk*; noon.



Whitman Community Print Night will be held in Fisher Fine Arts Library March 14. See Fitness & Learning.

TALKS

David Sepkoski, University of Illinois; 3:30 p.m.; rm. 337, Cohen Hall (HSS).

A Poetics of Colportage: Pamphlets and Chapbooks in Revolutionary-Era British America; Matthew Brown, University of Iowa; 5:15 p.m.; Class of 1978 Pavilion, Van Pelt-Dietrich Library (English).

Russian into Soviet: Dialects, Newspapers and the Making of Normative Dictionaries in the 1930s-1950s; Eleonor Gilburd, University of Chicago; 6 p.m.; rm. 209, College Hall (Russian and East European Studies).

26 *Harnessing the E2F Transcription Factor Family in Development and Cancer*; Gustavo Leone, USC; noon; Gaulton Auditorium, BRB II/III (Penn Vet Cancer Center).

Religion and the Future of Technology; Jennifer Alexander, University of Minnesota; 3 p.m.; rm. 286-7, McNeil Bldg. (Katz Center, Dean's Office, Perry World House, Religious Studies).

A Genre of Muslim Modernity? Urdu Ethics Literature in Colonial India; Farina Mir, University of Michigan; 4:30 p.m.; rm. 209, College Hall (History).

Verses and Flows: Migrant Lives and the Sounds of Crossing; Alex Chavez, Notre Dame; 5:15 p.m.; rm. 102, Lerner Center (Music).

Strongmen from Mussolini to Trump; Ruth Ben-Ghiat, NYU; 5:30 p.m.; rm. 109, Annenberg School (Center for Media at Risk).

27 *Pedagogy Seminar: Managing Identity-Based Conflict in the Classroom*; Grace Sanders Johnson, Africana Studies; Sharrona Pearl, ASC; and Lauren Jade Martin, Alice Paul Center; noon; rm. 345, Fisher-Bennett Hall; register: www.sas.upenn.edu/gsws/events (GWS).

Particle Transport in Soft, Disordered Media; Jeremy Palmer, University of Houston; 3 p.m.; Wu and Chen Auditorium, Levine Hall (CBE).

Planning for Retirement: Nuts & Bolts; Hilary Lopez, Human Resources, and Vicki Mulhern, Office of Faculty Affairs and Professional Development,

FITNESS & LEARNING

HR: Professional and Personal Development Programs
Open to faculty and staff; free unless otherwise noted.
Register: <http://knowledgelink.upenn.edu/>

4 *Participating in Performance Appraisals for Staff*; 12:30 p.m.

5 *Art of Effective Communication*; 12:30 p.m.

6 *Assertiveness Skills*; 12:30 p.m. Also March 28.

11 *Conducting Performance Appraisals for Supervisors*; 12:30 p.m.

14 *Creating and Maintaining Your LinkedIn Profile*; 12:30 p.m.

19 *Navigating Difficult Conversations*; 9 a.m.-noon; \$75.

HR: Work-life Workshops
Open to faculty and staff; 12:30 p.m.; free. Register: www.hr.upenn.edu/registration

5 *New and Expectant Parenting*.

8 *Guided Meditation*.

13 *Mindfulness*.

18 *Sleep Awareness Workshop*.

19 *Flexible Work Options*.

25 *Navigating the Tuition Benefit and Financial Aid for Your College Age Dependents*.

26 *Guided Meditation*.

27 *Resiliency: Secrets of Successful Employees*.

Liberal and Professional Studies
On-campus information sessions located at Ste. 100, 3440 Market St. unless otherwise noted.
Info: www.upenn.edu/lps-events

5 *Master of Environmental Studies Virtual Café*; noon.

6 *Walk-in Wednesday*; 11 a.m.-1 p.m. and 4:30-6 p.m. Also March 13, 20, 27.

7 *Penn Summer Virtual Information Session*; noon; info: www.sas.upenn.edu/summer/events

12 *Master of Liberal Arts On-Campus Information Session*; 12:30 p.m.

13 *Organizational Dynamics On-Campus Information Session*; 6-7:30 p.m.

TALKS

PSOM; 3:30 p.m.; Class of 1978 Pavilion, Van Pelt-Dietrich Library (PASEF).

Biased G Protein-Coupled Receptor Signaling; Howard Rockman, Duke University; 4 p.m.; rm. 11-146, Smilow Center (CVI).

B.R. Ambedkar and the 'Prostitute Problem' in Modern Maharashtra; Shailaja Paik, University of Cincinnati; 4:30 p.m.; Class of '55 Room, Van Pelt-Dietrich Library (South Asian Studies).

A History of Space Debris; Stuart Grey, University of Strathclyde Glasgow; 5 p.m.; Rainey Auditorium, Penn Museum (Wolf Humanities Center).

28 *Integration of the Microbiome, Diet, and Nutrition*; Gary Wu, HUP; noon; Gaulton Auditorium, BRB II/III (Center for Public Health Initiatives).

Chromatin States; David Christianson, chemistry; 3 p.m.; Carolyn Hoff Lynch Lecture Hall, Chemistry Bldg. (Chemistry).

Watching Human Evolution with Ancient DNA; Iain Mathieson, genetics; 4 p.m.; Tedor Family Auditorium, Levin Bldg. (Biology).

Leadership Lessons from Rome: An Experiment in Applied Classics; Emma Dench, Harvard; 4:30 p.m.; rm. 402, Cohen Hall (Classical Studies).

'Too Good to Passover': Preserving the Varied Foods, Traditions, and Memories of Passover in the Sephardic and Judeo-Arabic World; Jennifer Abadi, Institute of Culinary Education; 5:30 p.m.; rm. 111, Annenberg School (Jewish Studies).

29 *Elihu Katz Colloquium Series*; Srividya Ramesubramanian, Texas A&M; noon; rm. 500, Annenberg School (ASC).

The Truth About Us: Information and Society from Manu to Modi; Sanjoy Chakravorty, Temple University; noon; rm. 230, PCPSE (CASI).

Microbial Methane Metabolism: From the Deep Sea to a Tidal River; Katherine Dawson, Rutgers University; 2 p.m.; rm. 358, Hayden Hall (Earth & Environmental Science).

14 *Bachelor of Applied Arts and Sciences Virtual Information Session*; noon.

20 *Post-Baccalaureate Studies On-Campus Information Session*; 5:30 p.m.

27 *Post-Baccalaureate Studies Virtual Information Session*; 5:30 pm.

Morris Arboretum
Info: www.morrisarboretum.org

2 *Winter Wellness Walks*; 10:30 a.m. Saturdays; 1 p.m. Sundays; starts at the Visitor Center. Also March 3, 9, 10, 16, 17, 23, 24, 30, 31.

Winter Witchhazel Walk; 2 p.m. Also March 9.

5 *Bringing Great Plants to the West: E.H. Wilson and the Heyday of Plant Exploration*; Tony Kirkham, Royal Botanic Gardens, Kew; 2 p.m.; tickets: \$20, \$15/ members; register: bit.ly/morrislectures

Penn Museum
Info: www.penn.museum/

1 *The Daily Dig*; 15-minute artifact talk; 1 p.m.; free w/admission. Daily through March 31.

5 *Conversational Corners*; Spanish language groups welcome; 10 a.m. Also March 12, English language groups; March 19, Portuguese language groups; March 26, Italian language groups; free.

7 *Museum Mile*; 8:30 a.m.; free.

8 *Coffee with a Keeper: Deborah Brown Stewart*; 9:30 a.m.-11 a.m.; Museum Café, Penn Museum; \$5, free/ members (Penn Museum).

Penn Vet Working Dog Center
Register: <https://www.vet.upenn.edu/about/penn-vet-events-calendar>

5 *"Get Lost" Working Dog Center Tour*; 2 p.m.

21 *"Up & Over, Under & Through" Working Dog Center Tour*; 10 a.m.

March
AT PENN