

February

AT PENN



Wherever this symbol appears, more images are available on our website, www.upenn.edu/almanac/at-penn-calendar. All events are in EST unless noted otherwise.

Disclaimer: Event locations are subject to change. Always check the event website before attending.

ACADEMIC CALENDAR

21 Drop period ends.

CHILDREN'S ACTIVITIES

Penn Museum

Online events. Info: <https://www.penn.museum/calendar>.

1 *Global Voyagers: Destination Africa*; 11 a.m. ☞

At-Home Anthro Live: Celebrate Chinese New Year Traditions; 1 p.m. ☞

8 *At-Home Anthro Live: Egyptian Amulets*; 1 p.m. ☞

15 *At-Home Anthro Live: Design a Mancala Board*; 1 p.m. ☞

22 *At-Home Anthro Live: Design a Kanga*; 1 p.m. ☞

CONFERENCES

11 *ODEI Spotlight: Women+ in STEM at Penn Research Symposium*; will feature research from members of the community who identify as gender minorities; 10 a.m.-6 p.m.; online event; info: upennwomeninchemistry@gmail.com (Center for Soft and Living Matter).

15 *Instruments of Change*; will explore ground-based sensors and aerial-and-satellite-gathered imagery, the use of models to simulate material behavior, and place-based experiments that directly manipulate landscape material; 11 a.m.-1:30 p.m.; online event; register: <https://tinyurl.com/instruments-of-change> (Landscape Architecture). Also February 17-18, 11 a.m.-1:30 p.m.

18 *Yearning for the World: Mediating Proximity after Distanced Times*; engages the "before," "during," and "after" of a pandemic whose unevenly distributed effects have deeply unsettled our senses of being and belonging; 5 p.m.; Kislak Center, Van Pelt Library; info: <https://tinyurl.com/yearning-for-the-world> (Cinema Studies). Through February 19.

25 *26th Annual Graduate Student Symposium in the History of Art*; brings together graduate students from nine mid-Atlantic colleges and universities to present current research in the field of art history; 6:30-8 p.m.; location TBA; info: <https://arth.sas.upenn.edu/events/graduate-student-symposium-history-art-2> (History of Art, Barnes Foundation).

Migration: Points of Entry, Points of Departure; will consider the past, present, and future of migration, a practice that has transformed geo-political boundaries, nation-states, cities, and civilizations throughout history; 9:30 a.m.-6:30 p.m.; Class of 1978 Orrery Pavilion, Van Pelt

Library; register: <https://tinyurl.com/migration-conference> (Wolf Humanities Center).

EXHIBITS

Museums Near Campus

For up-to-date information about, exhibits, prices, hours and COVID-19 restrictions for several museums on and near Penn's campus, visit these websites.

Arthur Ross Gallery: <http://www.arthur-rossgallery.org/visit/schedule-your-visit/>

Brotsky Gallery: <http://writing.upenn.edu/wh/involved/series/brodskygallery/>

Esther Klein Gallery: <https://sciencecenter.org/discover/ekg>

ICA: <https://icaphila.org>

Kroiz Gallery, Fisher Fine Arts Library: <http://tinyurl.com/hvrlct4>

Meyerson Hall: <https://tinyurl.com/y27c5dty>

Morris Arboretum: http://www.morrisarboretum.org/visit_hours.shtml

Penn Museum: <https://www.penn.museum/visit/plan-your-visit>

Quorum: <https://sciencecenter.org/discover/quorum>

Slought: <https://slought.org/>

Van Pelt Library: <https://www.library.upenn.edu/about/hours/vp>

Wistar Institute: <https://wistar.org/>

Now

Sense & Antisense by Talia Greene; visualizes how facts about the pandemic "mutated" through the media and envisions a misinformation vaccine to act as the antidote; Esther Klein Gallery. Through March 22. ☞

The Stories We Wear; reveals how clothing and accessories offer powerful expressions of identity and examines the purpose and meaning behind what we wear, showcasing 2,500 years of style via 250 objects. Through June 12. ☞

FCC On 6, 7, 8: Na Kim; installation comprising bold colors, shapes, and patterns inspired by everyday life, designed by conceptually-driven graphic designer Na Kim; ICA. Through July 10. ☞

Ongoing

Building in China: A Century of Dialogues on Modern Architecture; an exhibition tracing China's shifting design practices over a century in which many of its leading practitioners and scholars were educated at Penn; Architectural Archives, Fisher Fine Arts Gallery. Through April 28, 2022. ☞

No Ocean Between Us: Art of Asian Diasporas in Latin America & The Caribbean, 1945-Present; features modern and contemporary art by Latin American and Caribbean artists of Asian descent, highlighting artists whose work reflects the global dialogues between their Asian heritages and their Latin American or Caribbean identities; Arthur Ross Gallery. Through May 17, 2022. ☞

Art By Mail; display of art made by community members with kits distributed by Kelly Writers House in January; Brodsky Gallery, Kelly Writers House.

Martha Rich: It Goes By Fast; an exuberant and joyful splash of energy that takes full advantage of a 75' by 20' brick wall, painted by Martha Rich, MFA'11; Feintuch Family Lobby, Penn Live Arts Annenberg Center.

Upcoming

1 *Late for Revision*, drawings by Jen Wroblewski; a group of small graphite drawings by Jen Wroblewski that investigate the peculiar capacity of line and mark to cohere into narrative that exists outside of syntactic structures; Brodsky Gallery. Opening: February 1, 6 p.m.

16 *Faces of Immigration: Photographs by Harvey Finkle*; works by social worker turned photographer Harvey Finkle, MSW'61, who has spent five decades documenting immigrant communities as well as social and political activism across Philadelphia and beyond; pop-up exhibition; 3-7:30 p.m.; Kislak Center, Van Pelt Library. ☞

FILMS

13 *Second Sunday Culture Film: On a Tightrope*; film about the tradition of tightrope walking, one of the few professional tracks available to Uyghur youth in Chinese-held territories; 2-4 p.m.; online screening; info: <https://www.penn.museum/calendar/861/second-sunday-culture-film> (Penn Museum, Center for East Asian Studies, Wolf Humanities Center, Cinema Studies).

FITNESS & LEARNING

2 *Penn Weitzman Alumni Association Professional Review, Spring 2022*; students bring their portfolios or other work to a 15-minute discussion session with a panel of Weitzman School alumni; 6-8 p.m.; online event; info: <https://tinyurl.com/weitzman-alumni-review-2022> (Weitzman School). Also February 3, 6-8 p.m.

3 *The Deep Dig: Animal Stories: Learning from Zooarchaeology*; students will spend each class session virtually in the Zooarchaeology Lab in the Center for the Analysis of Archaeological Materials (CAAM) at the Penn Museum, studying a different archaeological site each week and exploring the range of issues that zooarchaeologists can address using ancient animal bone; 6:30 p.m.; register: <https://www.penn.museum/calendar/1070/the-deep-dig> (Penn Museum). Also February 10, 17, 24.

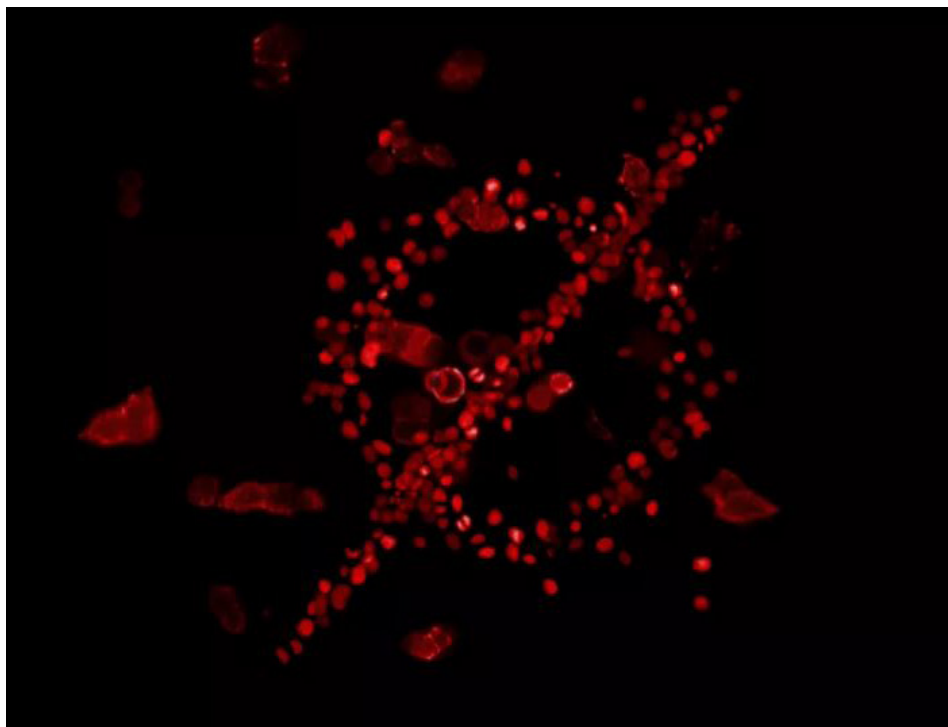
19 *Workshop: Rust*; an introduction to Rust code syntax and semantics; including how language features from more familiar languages like Python and C++ transfer over and concepts not found in many mainstream languages; 10 a.m.-3 p.m.; online webinar; info: kathom@seas.upenn.edu (Penn Institute for Computational Sciences).

25 *2022 Virtual Design Career Fair*; fair specifically for students interested in careers in the design fields; noon-5 p.m.; online event; info: <https://tinyurl.com/weitzman-career-fair-2022> (Weitzman School).

African-American Resource Center (AARC) Zoom meetings Info: <https://aarc.upenn.edu/events>.

8 *Black History Month Program*; noon.

16 *WOCAP Noontime Lunch Series Presents: Transforming Men into Allies in the Workplace*; noon.



Senseless Antisense by Talia Greene, an exhibit of works at the Esther Klein Gallery that liken the COVID pandemic to a pandemic of misinformation. See Exhibits.

17 *Men of Color (Monthly Huddle Meeting) Presents: Who Paved Your Way: Recognizing Our Immediate Ancestors*; 1 p.m.

25 *Community Lunch Program: Open Forum with AARC and PWC*; noon.

Center for Undergraduate Research & Fellowships (CURF)

Zoom webinars. Info: <https://www.curf.upenn.edu/curf-events>.

3 *PURM Info Session*; 2 p.m. Also February 15, 4 p.m.

Fulbright U.S. Student Program Information Session; 4 p.m. Also February 22, 4 p.m. *Fellowships Explained*; 5 p.m.

18 *How to Build an Effective Fellowship Application*; 10:30 a.m.

The Signal's Anti-Resume Project and CURF Present: Failure at Penn; 2 p.m.

College of Liberal & Professional Studies (LPS)

Online events. Info: www.upenn.edu/lps-events.

1 *Master of Environmental Studies Virtual Café*; noon. ☞

Master of Science in Applied Geosciences Virtual Information Session; noon. ☞

3 *Master of Science in Applied Geosciences Virtual Café*; noon. ☞

8 *Bachelor of Applied Arts and Sciences Virtual Information Session*; 6 p.m. Also February 22, noon. ☞

9 *Fels Institute of Government Virtual Information Session*; noon. ☞

10 *Master of Environmental Studies Virtual Information Session*; noon. ☞

15 *Master of Liberal Arts Virtual Information Session*; 5 p.m. ☞

Organizational Dynamics Virtual Information Session; 6 p.m. ☞

16 *Pre-Health Post-Baccalaureate Programs Virtual Information Session*; 5 p.m. ☞

17 *Master of Chemical Sciences Virtual Information Session*; 5:30 p.m. ☞

Graduate School of Education (GSE)

Unless noted, online events. Info: <https://www.gse.upenn.edu/news/events-calendar>.

1 *Virgin Pulse Wellness Platform Demo*; for staff & faculty; noon.

2 *Virtual Deskercise 30-Minute Workshop*; for staff & faculty; noon.

3 *Fundamentals of Strategic Planning*; for staff & faculty; 12:30 p.m.
Not a Monolith: Storying Asian American Identities in Research and Teaching; 5 p.m.

4 *Friday Virtual Chats with Admissions*; noon. Also February 11, 9 a.m.; February 18; noon; February 25, 9 a.m.

8 *Executive Doctorate in Higher Education Management Program Information Session*; noon.

16 *Staff Service Celebration*; for staff & faculty; 3:30 p.m.

18 *Penn GSE Live with Charru Sharma*; 12:30 p.m.

21 *International Educational Development Program Virtual Info Session*; noon.

23 *GSE-IT Ticketing System (Freshservice) Training*; 1:30 p.m.

24 *New Canvas Course Creation Form Training*; 1 p.m.

25 *HEARD Book Group: Decolonizing Universalism: A Transnational Feminist Ethic*; noon.

Human Resources Workshops

Unless noted, online events. Info: <https://tinyurl.com/penn-hr-programs>.

1 *Virgin Pulse Wellness Platform Demo*; noon.

2 *Deskercise 30-Minute Workshop*; noon.

3 *Guided Mindful Meditation*; noon.
Fundamentals of Strategic Planning; 12:30 p.m.

4 *30-Minute Guided Meditation*; noon. Also February 11, 18, 25.

7 *30-Minute Chair Yoga Plus Core*; noon. Also February 14, 21, 28.

8 *Resilience Workshop: Resilience and Learned Optimism*; 12:30 p.m.

9 *Chair Yoga*; noon. Also February 23. *Adapting Your Leadership Style*; 12:30 p.m.

10 *3 Practices To Be Your Best Friend and Coach On the Spot*; noon.

14 *Monthly Wellness Walk—Go Red for Heart Health Day*; noon; meet at the Palestra.

15 *Managing Time and Setting Boundaries*; 12:30 p.m.

16 *Navigating the Curricular Waters: Presented by Penn Admissions*; noon.

17 *Virtual Training 101*; 12:30 p.m.

22 *Resilience Workshop: Avoid Thinking Traps*; 12:30 p.m.

Morris Arboretum

In-person tours and events. Info: <https://www.morrisarboretum.org/>.

5 *Wellness Walks*; 10:30 a.m. Weekends. ☞
Garden Highlights Tour; 1 p.m. Weekends.

12 *Witchhazels Tour*; 11 a.m. ☞

Penn Nursing

Online events. Info: <https://www.nursing.upenn.edu/calendar/>.

1 *Penn Nursing Alumni Panel: What Masters Program is Right for You?*; 7 p.m.

2 *A Journey Through the Psychedelic Revival: What Happens in Psychedelic Therapy?*; 6:30 p.m.

15 *A Journey Through the Psychedelic Revival: Psychedelic Neuroscience and Pharmacology*; 6:30 p.m.

18 *Restorative Circles for Penn Nursing Community Building*; for staff and faculty; 4 p.m.

MUSIC

Penn Live Arts

In-person performances at Zellerbach Theater, Annenberg Center. Info: <https://pennlivearts.org/events/calendar.php>.

4 *The Jazz Gallery All-Stars*; seven Grammy-winning members of the well-known New York group come together to play a program of new compositions and old favorites; 8 p.m. ☞

11 *Regina Carter Quartet*; jazz's leading violinist, known for seamlessly traversing jazz, R&B, Latin, classical, blues and everything in between, performs a daring program that is accessible and intelligent; 8 p.m. ☞

ON STAGE

13 *The Letters: Marian & Orpheus: A Love Story*; a dramatic reading of the love letters of groundbreaking contralto Marian Anderson, an iconic figure in the struggle for civil rights, and noted African-American architect Orpheus "King" Fisher; 4 p.m.; Penn Museum; tickets: <https://www.penn.museum/calendar/1074/the-letters> (Penn Museum). ☞

18 *Trinity Irish Dance Company*; progressive Irish dance troupe uses hard-driving percussive power, lightning-fast agility and aerial grace to fuse Ireland's vibrant tradition and legacy with ever-evolving, American innovation; 8 p.m.; Zellerbach Theater, Annenberg Center; tickets: <https://pennlivearts.org/event/trinity-irish-dance-company-1010> (Penn Live Arts). Also February 19, 2 p.m. and 8 p.m. ☞

READINGS AND SIGNINGS

7 *Between the Lines: My Lord, What a Morning: An Autobiography* by Marian Anderson;

book club that discusses the autobiography of Marian Anderson, a groundbreaking contralto and an icon for civil rights; 6 p.m.; online event; tickets: <https://www.penn.museum/calendar/1013/between-the-lines> (Penn Museum). Also February 21, 28.

Diverging Space for Deviants; Akira Drake Rodriguez, city & regional planning; 6 p.m.; room B3, Meyerson Hall; register: <https://tinyurl.com/rodriguez-reading-feb-7> (City & Regional Planning).


10 *Island Futures: Caribbean Survival in the Anthropocene*; Mimi Sheller, Worcester Polytechnic Institute; 1 p.m.; Zoom webinar; register: <https://tinyurl.com/sheller-reading-feb-10> (Annenberg School).

16 *Penn Nursing Story Slam*; brings together nurse storytellers from Penn Nursing and Penn Medicine to share their true, personal stories that explore the breadth, depth, and diversity of nursing; 7 p.m.; online event; register: <https://tinyurl.com/nursing-story-slam-feb-16> (Penn Nursing).

21 *Taking Stock of Shock: Social Consequences of the 1989 Revolutions*; Kristen Ghodsee and Mitchell Orenstein, Russian & East European Studies; 6 p.m.; room 209, College Hall; info: <https://www.history.upenn.edu/node/14426> (History).

Kelly Writers House

Online and in-person events. Info: <http://writing.upenn.edu/wh/calendar/0222.php>.

2 *We All Feel Like It*; hosted by Michelle Taransky, English; 6 p.m.; Arts Café and YouTube livestream. 

3 *Reading and Conversation*; Franny Choi, poet and author; 6 p.m.; online livestream.

7 *Joan is Okay*; book launch for Weike Wang, English; 6 p.m.; Arts Café and YouTube livestream.

8 *Reading and Conversation*; Safia Elhillo and Angel Nafis; 6 p.m.; Arts Café and YouTube livestream.

10 *Practicing Cooperation: Mutual Aid Beyond Capitalism*; Andrew Zitcer, Drexel; 6 p.m.; Arts Café and YouTube livestream.

16 *Speakeasy Open Mic Night*; 7:30 p.m.; Arts Café and YouTube livestream.

17 *A Forest on Many Stems: Essays on the Poet's Novel*; book launch for new poetry anthology, featuring several of its contributors; 6 p.m.; Arts Café and YouTube livestream.

21 *A Reading*; Amitav Ghosh, author; 6:30 p.m.; Arts Café.

22 *A Conversation*; Amitav Ghosh, author; 10 a.m.; Arts Café.

23 *Dance and the Poetics of Diaspora*; Dahlia Li, English; 6 p.m.; location TBA.

SPECIAL EVENTS

24 *Penn Dental Black History Month Celebration*; features remarks by Dean Mark Wolff and speakers from the Student National Dental Association; 5:30 p.m.; BlueJeans webinar; register: <https://primetime.bluejeans.com/a2m/register/buhhpytb> (Penn Dental).

TALKS

1 *Handling Equine Emergencies in the Field*; Elizabeth Arbittier, Penn Vet; 6:30 p.m.; online webinar; register: <https://tinyurl.com/arbittier-talk-feb-1> (Penn Vet).

2 *The Heritage Lens: How Historic Preservation Can Engage with Global Issues*; Jonathan



On February 15, hear Catherine Baker of Bryn Mawr College discuss the archaeological history of the ruins of Pompeii. See Talks.

Bell, World Monuments Fund; noon; Kleinman Forum, Fisher Fine Arts Library; register: <https://tinyurl.com/bell-talk-feb-2> (Historic Preservation).

3 *Significance of Plasma Refilling During Hemodialysis*; Christina Hao Wang, nephrology; 9 a.m.; BlueJeans webinar; join: https://bluejeans.com/873734674/4747?src=join_info (Center for Clinical Epidemiology & Biostatistics).

Dreams of Spain: Old and New Judeo-Spanish (Ladino) Songs; Edwin Seroussi, Hebrew University of Jerusalem; noon; Zoom webinar; tickets: \$80 for four sessions; register: <https://tinyurl.com/seroussi-talk-feb-3> (Katz Center for Advanced Judaic Studies). Also February 10, 17, 24.

Mapping the Neural Dynamics of Social Dominance and Defeat; Annegret Falkner, Princeton; 4 p.m.; Tedor Family Auditorium, Levin Building, and Zoom webinar; join: <https://upenn.zoom.us/j/97464347521#success> (Biology).

How Do Mindfulness Interventions Work? Building a Neuroscience Linking Mindfulness Interventions to Well-Being; David Creswell, Carnegie Mellon University; 4:30 p.m.; room 218, Houston Hall; RSVP: info@neuroethics.upenn.edu (Center for Neuroscience & Society).

4 *Reforming Primary Care for a 21st Century Health Care System*; panel of speakers; noon; Zoom webinar; join: <https://upenn.zoom.us/j/99578819009> (Leonard Davis Institute).

Wood Working: Brazilwood and Salvation in Amsterdam's Rasphuis Prison, c. 1600; Erin Wrightson, history of art; 3:30 p.m.; room 419, Fisher-Bennett Hall and Zoom webinar; register: <https://tinyurl.com/wrightson-talk-feb-4> (History of Art).

9 *Brave Neuro World*; Martha Farah, Center for Neuroscience & Society; noon; online webinar; info: pasef@pobox.upenn.edu (Penn Association for Senior & Emeritus Faculty).

Eurovision, Blackness and Televisual Spectacle; Melissa Blanco Borelli, Northwestern University; 1 p.m.; room 330, Fisher-Bennett Hall (Cinema Studies).

Race and Privacy Regulation; Anita Allen, Carey Law School; 4:30 p.m.; online webinar; register: <https://pennlaw.event.com/d/s8qj2> (Carey Law School).

10 *2021-2022 Sachs Visiting Professor Lecture*; Every Ocean Hughes, fine arts; 6 p.m.; Arts Lounge, Annenberg Center (Fine Arts).

11 *The French Origins of the Restaurant: The 1802 Menu of Antoine Beauvilliers, Restaurateur*; Lynne Farrington, Kislak Center; noon; online webinar; info: <https://tinyurl.com/farrington-talk-feb-11> (Kislak Center).

15 *Learning in a Time of Covid-19: Emerging Research From Low- and Middle-Income*

Countries; Sharon Wolf, GSE; Jere Behrman, economics; 10 a.m.; Zoom webinar; register: <https://tinyurl.com/wolf-talk-feb-15> (Penn Development Research Initiative).

16 *Lessons from the Field: From Site to Place to Cultural Preservation*; Nada Hosking, Global Heritage Fund; noon; Kleinman Forum, Fisher Fine Arts Library; register: <https://tinyurl.com/hosking-talk-feb-16> (Historic Preservation).

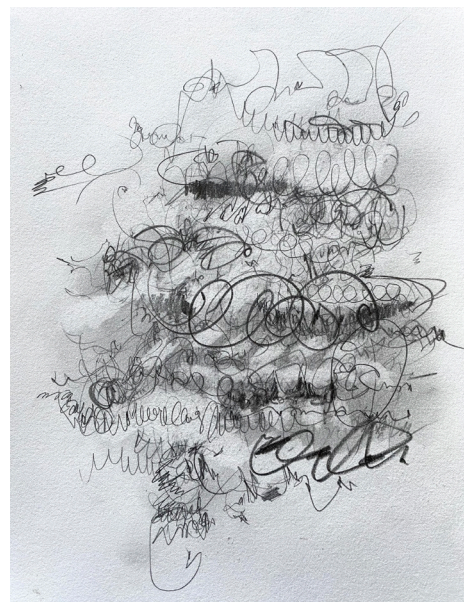
Jim Crow in the Asylum: Psychiatry and Civil Rights in the American South; Kylie Smith, Emory University; 4 p.m.; BlueJeans webinar; register: <https://tinyurl.com/smith-talk-feb-16> (Penn Nursing).

Immigration: A Philadelphia Perspective; panel of speakers; 5 p.m.; Class of 1978 Orrery Pavilion, Van Pelt Library; register: <https://tinyurl.com/immigration-panel-feb-16> (Wolf Humanities Center).

Public Works; Laurie Hawkinson, Smith-Miller + Hawkinson Architects; 6:30 p.m.; Plaza Gallery, Meyerson Hall; register: <https://tinyurl.com/hawkinson-talk-feb-16> (Architecture).

17 *The Evolution of Development of Climbing Plant*; Joyce (Chery) Onyenedum, Cornell; 4 p.m.; Tedor Family Auditorium, Levin Building, and Zoom webinar; join: <https://upenn.zoom.us/j/97464347521#success> (Biology).

Fels Public Policy in Practice Speaker Series; British Robinson, Barbara Bush Foundation for Family Literacy; 6 p.m.; Zoom webinar;



Late for Revision, on display at the Brodsky Gallery on February 1, contains unique graphite drawings by Jen Wroblewski. See Exhibits.

register: <https://www.fels.upenn.edu/events/ppp-speaker-series-british-robinson> (Fels Institute of Government).

22 *New Directions in Ovarian Cancer Research*; Sharon Stack, Harper Cancer Research Institute; noon; GoToWebinar; join: <https://global.gotomeeting.com/join/227215405> (Wistar Institute).

Board Diversity Matters: An Empirical Assessment of Community Lending at Federal Reserve-Regulated Banks; Brian Feinstein, Wharton School; 5 p.m.; online webinar; register: <https://tinyurl.com/feinstein-talk-feb-22> (Carey Law School).

Of Magic Lanterns and Kirttan Bands: Technology, Spectacle, and Performance in Colonial India; Anna Schultz, University of Chicago; 5:15 p.m.; room 101, Lerner Center (Music).

23 *State-Sponsored Nature: Film and the Civilian Conservation Corps*; Jennifer Peterson, Woodbury University; noon; Zoom meeting; join: <https://tinyurl.com/peterson-talk-feb-23> (Cinema Studies).

Deaf People on the Move: Temporal Dimensions; Sanchu Iyer and Amandine le Maire, Heriot-Watt University; 5 p.m.; online webinar; info: <https://wolfhumanities.upenn.edu/events/deaf-people-move> (Wolf Humanities Center).

American Heresies: Civil Religion and Foreign Affairs Since 1776; Walter McDougall, history; 5:15 p.m.; room 200, College Hall; info: <https://www.history.upenn.edu/node/14434> (History).

24 *Nigeria's Twitter Ban and the Logic of Cultural Netizenship*; James Yékú, University of Kansas; 1 p.m.; Zoom webinar; register: <https://tinyurl.com/yeku-talk-feb-24> (Center for Advanced Research in Global Communication).

Gender Ideology and Neofamilism: Gender, Marriage, Family, and Sexual Values in China;

Xiaoling Shu, UC Davis; 5 p.m.; location TBA; info: <https://ceas.sas.upenn.edu/events> (Center for East Asian Studies).

Muertes Civiles and The Possibility of Life: Human Rights Activism Against Racism in the Dominican Republic; Amarilys Estrella, Rice University; 5:30 p.m.; Zoom webinar; register: <https://tinyurl.com/estrella-talk-feb-24> (Africana Studies).

25 *Driving Physics of Inverted Flag Flapping*; Andres Goza, University of Illinois Urbana-Champaign; 2 p.m.; online webinar; info: kathom@seas.upenn.edu (Penn Institute for Computational Science).

28 *Ancient Migration at the Bering Strait: A Trans-Disciplinary and Trans-National History of Scientific Investigation*; Brooke Penaloza-Patzak, Austrian Science Fund; 3:30 p.m.; Zoom webinar; info: <https://tinyurl.com/penaloza-patzak-feb-28> (History & Sociology of Science).

When Your City Becomes a Campus: Higher Ed Planning and the Rise of UniverCities; Davarian Baldwin, Trinity College; 6 p.m.; Zoom webinar; register: <https://tinyurl.com/baldwin-talk-feb-28> (City & Regional Planning).

Asian American Studies (ASAM)

Online and in-person events. Info: <https://asam.sas.upenn.edu/events>.

1 *Race and the Law*; Vinay Harpalani, University of New Mexico; noon; Zoom webinar.

4 *Silicon Valley Religiosity: South Asian American Influence in Islamic Spaces*; Ali Rahman, English; noon; room 473, McNeil Building and Zoom webinar.

8 *Race and Healthcare*; Antonia Villarruel, Dean of Penn Nursing; noon; Zoom webinar.

9 *Mental Health and Immigrants*; Denise Ziya Berte, Peaceful Family Project; 9 a.m.; room 473, McNeil Building and Zoom webinar.



On stage this month: (above) *The Letters*, a play based on the letters of Marian Anderson and her husband, Orpheus "King" Fisher, will show at the Penn Museum on February 13. Trinity Irish Dance Company (below), performs at Penn Live Arts on February 18 and 19.



11 *Making Meaning of Diversity in the College Application Process*; Tiffany Huang, ASAM; noon; room 473, McNeil Building and Zoom webinar.

17 *Race and Migration*; Fernando Chang-Muy, Carey Law School; noon; Zoom webinar.

Boardman Symposium: Destabilizing Religion in the Middle East

Sponsored by Penn's department of religious studies. Online webinars. Register: <https://bit.ly/boardmansymposium>.

2 *Religion and Theology: What Difference Does it Make?*; Jack Tannous, Princeton; *An Age of Faith? The Paradoxes of Studying Pre-Modern Islam*; Marion Katz, NYU; 5 p.m.

9 *Religion and Everyday Writing Across the First Millennium: The Case of Hebrew-Script Documents*; Eve Krakowski, Princeton; 5 p.m.

16 *The Mobilization of Faith and the Politics of Identities: Islam's Scripturalist Antecedents in Arabia*; Valentina Grasso, NYU; 5 p.m.

23 *Decentering Islam: Orthodoxy, Orthopraxy & Heresy in the Middle Ages*; Suleiman Mourad, Smith College; 5 p.m.

Center for Latin American and Latinx Studies (CLALS)

Zoom webinars. Info: <https://clals.sas.upenn.edu/events>.

7 *The Brazilian Landless Movement: Agroecology*; Manuel Roman-Lacayo, University of Pittsburgh; Marleen Linares-González and Lenny Ureña Valerio, University of New Mexico; 4 p.m.

8 *The Political Economy of Greening Policies in Latecomer Countries: Policy Legacies, Ideology, and Electoral Cycles in Argentina and Chile*; Santiago Cunial, political science; 4 p.m.

15 *Dispossessions in the Americas: Fighting for Land Under Bolsonaro: Territorial Rights and Indigenous Mobilization in Contemporary Brazil*; Daniela Alarcon, CLALS; noon.

Chemical & Biomolecular Engineering (CBE)

In-person events at Wu & Chen Auditorium, Levine Hall. Info: <https://cbe.seas.upenn.edu/events/>.

2 *From Trash to Treasure: Advancing the Heterogeneous Catalytic Deconstruction and Upcycling of Waste Polyolefins*; Julie Rorrer, MIT; 3:30 p.m.

9 *Investigating Biomedical Challenges Through State-of-the-Art DNA-Based Technology*; Molly Kozminsky, UC Berkeley; 3:30 p.m.

16 *Beyond Surface Facilitates Electrocatalytic Reactions of Renewable Carbons*; Dohyung Kim, Stanford; 3:30 p.m.

23 *Beyond Ethanol: A Process and Systems Engineering Framework for the Design of Advanced Biofuels*; Juan Manuel Restrepo Florez, University of Wisconsin-Madison; 3:30 p.m.

Penn Dental

Unless noted, online events. Info: <https://www.dental.upenn.edu/news-events/events/>.

1 *What is Disability, How it Affects Oral Disease Risk and How Does Disability Effect Dental Care and Treatment Planning?*; Mark Wolff, Dean of Penn Dental; 7 p.m.

2 *Dental Materials and Techniques to Manage Caries for Persons with Disabilities*; Mark Wolff, Dean of Penn Dental; 8:30 p.m.

3 *Catalytic Antimicrobial Microrobots for Biofilm Eradication*; Edward Steager, GRASP; noon; room 338, Levy Building and Zoom webinar.



On February 4, members of Grammy-winning New York Group the Jazz Gallery All Stars will perform at the Annenberg Center. See Music.

21 *Lessons Learned from Supporting “Learning Health Systems” and Evidence-Informed Policymaking*; John Lavis, McMaster University; 5:30 p.m.

28 *Political Determinants of Oral Health*; Carol Guarnizo-Herreño, National University of Colombia; 5:30 p.m.

Economics

Online events. Info: <https://economics.sas.upenn.edu/events>.

1 *Matching and Prices*; Ravi Jagadeesan, Harvard; noon.

2 *The Macroeconomics of Rising Returns to Scale: Customer Accumulation, Markups, and Dynamism*; Andrea Chiavari, Universitat Pompeu Fabra; noon.

3 *Revealed Beliefs and the Marriage Market Return to Education*; Alison Andrew, University College London; noon.

4 *Spatial Mismatch*; Juliette Fournier, MIT; noon.

7 *Policy Design in Experiments with (Unknown) Interference*; Davide Viviano, UC San Diego; noon.

8 *Computationally Tractable Choice*; Modibo Camara, Northwestern University; noon.

9 *Contracting and Vertical Control by a Dominant Platform*; Ellen Muir, Stanford; noon.

10 *Credible Persuasion*; Xiao Lin, Penn State; noon.

11 *Wealth, Returns, and Taxation: A Tale of Two Dependencies*; Alexandre Gaillard, Toulouse School of Economics; noon.

Graduate School of Education (GSE)

Room 203, 3700 Walnut Street and Zoom webinars. Info: <https://www.gse.upenn.edu/news/events-calendar>.

4 *Lessons Learned from a Large-scale Longitudinal Impact Study*; Angela Boatman, Boston College; 12:30 p.m.

11 *Why Consider a Career in a Policy Research Firm: Benefits, Contrasts, and Trajectories*; Irma Perez-Johnson, American Institutes for Research; 12:30 p.m.

18 *Is Separate Still Unequal? New Evidence on School Segregation and Racial Academic Achievement Gaps*; Sean Reardon, Stanford; 12:30 p.m.

25 *Improving Literacy through Evidence: Research Use Through a Researcher-Practitioner Partnership*; Jill Bowdon, American Institutes for Research; 12:30 p.m.

Korean Studies

Locations TBA. Info: <https://korea.sas.upenn.edu/events>.

3 *Changing Income Inequality in South Korea, 1990 to 2018*; ChangHwan Kim, University of Kansas; noon.

10 *Soju and Korea in Global Cross-Cultural Exchanges*; Hyunhee Park, CUNY; noon.

17 *The Newest Original for the Farthest Origin: Postcolonial Korea’s Discourse of Loss and Modern Translation*; Yoon Jeong Oh, NYU; noon.

Medical Ethics & Health Policy

Zoom webinars. Info: <https://medicaethicshelpolicy.med.upenn.edu/events>.

1 *Hospitalizations from Immigration Detention in Texas and Louisiana*; Joseph Nwadiuko, UCLA; noon.

7 *Salient Ethical Issues in Implementation Science: Pragmatic Tradeoffs, Unintended Consequences, and Sustainability*; Rinad Beidas, psychiatry; Katelin Hoskins, psychiatry; noon.

15 *The Unequal Pandemic*; Julia Lynch, political science; noon.

22 *COVID Caregiving: An Interview Study with Caregivers of Persons Living with Dementia*; Emily Largent, medical ethics & health policy; noon.

Microbiology

Austrian Auditorium, CRB, and BlueJeans meetings. Join: <https://primetime.bluejeans.com/a2m/live-event/xqbwzwhrb>.

2 *Microbiota Regulation of Intestinal Immunity*; Gretchen Diehl, Sloan Kettering Institute; noon.

16 *Heritable Memories in *C. Elegans* Nematodes*; Oded Rechavi, Tel Aviv University; noon.

23 *Hijacking the Host: Viral Mechanisms to Control Gene Expression and Anti-Viral Responses*; Marta Gaglia, Tufts University; noon.

Middle East Center

Unless noted, online webinars. Info: <https://mcc.sas.upenn.edu/events>.

3 *Egyptian Film Poster Exhibit: Closing Panel*; panel of speakers; 5:30 p.m.

8 *Rerooted Archive: 100 Years of Syrian-Armenian History*; Ani Schug, Rerooted Archive; Anoush Baghdassarian, Harvard; Rebekah Mills, Villanova; noon.

17 *Regional and External Politics*; Fawaz Gerges, London School of Economics; Tim Mitchell, Columbia; 4:30 p.m.; room 250, PCPSE.

23 *Militarized Borders and the Politics of Immigration in the 21st Century*; Osman Balkan, Swarthmore College; 6:30 p.m.

Penn Museum

Online webinars. Info: <https://www.penn-museum/calendar>.

2 *Dr. B.R. Ambedkar’s Indian Revolution: Fighting Caste, Gender, Sexuality and Forging a New Womanhood*; Shailaja Paik, University of Cincinnati; 6 p.m.

15 *Artifacts and Archaeological Processes: The Lives and Afterlives of Objects in Pompeii*; Catherine Baker, Bryn Mawr College; 6:15 p.m.

17 *Antiquities Trafficking, Art Crime, and the Law: Penn Cultural Heritage Center Lecture*; Jake Archer, FBI; 12:30 p.m.

Population Studies Center (PSC)

Unless noted, in-person events at room 150, McNeil Building. Info: <https://www.pop.upenn.edu/>.

18 *Partnership to Improve Care and Translate Evidence for Seniors (PICANTES)*; panel of speakers; 2 p.m.; online webinar.

21 *Job Flexibility and Household Labor Supply: Understanding Gender Gaps and the Child Wage Penalty*; Minji Bang, economics; noon.

28 *The Journey to Adulthood in Uncertain Times*; Rob Crosnoe, University of Texas at Austin; noon.

Sociology

Unless noted, in-person events at room 367, McNeil Building. Info: <https://sociology.sas.upenn.edu/events>.

4 *Intersectionally-Constrained Earnings (Dis)advantage of Black, Hispanic, and Asian American Women*; ChangHwan Kim, University of Kansas; noon.

11 *Engineering Style: The Discipline and Variety of Assembly Lines*; Alexander Hoppe, sociology; noon.

14 *Applications for Restricted Data*; Rebecca Schut, demography & sociology; 10 a.m.; location TBA.

16 *The Organizational Bases of Racial Discrimination in Hiring*; David Pedulla, Harvard; noon; room 150, McNeil Building.

25 *Knowledge Discovery in the Social Sciences: A Data Mining Approach*; Xiaoling Shu, UC Davis; noon.

Workshop in the History of Material Texts

In-person events at the Class of 1978 Orrery Pavilion, Van Pelt Library. Info: <https://penn-materialtexts.org/about/events/>.

7 *The Hangul Typewriter: Failing Communication and the Korean Writing System*; Dahye Kim, Northwestern University; 5:15 p.m.

14 *Revolutionary Science: Movable Books and the Medieval Universe*; Aylin Malcolm, English; 5:15 p.m.

21 *Mending Bodies by (A)mending Texts: Medical Manuscripts from the Early Middle Ages*; Meg Leja, Binghamton University; 5:15 p.m.

28 *David Walker’s Textual Engagements*; Marcy Dinius, DePaul University; 5:15 p.m.