

ACADEMIC CALENDAR

2 Course Selection Period Ends.

20 Drop Period Ends.

CHILDREN'S ACTIVITIES

Morris Arboretum
Register: (215) 247-5777 ext. 156 or 125.
7 Cupid's Valentine's Centerpiece; ages 5-12; \$33, \$30/members; 1-3 p.m.
Peanut Butter & Jams: World Cafe Live
Info.: www.worldcafelive.com. \$10/adults, \$7/children, unless otherwise noted; 11:30 a.m.
1 Paul Green School of Rock; best of the season show; \$10; noon.
7 Ralph's World; rock music that respects kids' intelligence and curiosity; \$15.
14 Milkshake: A Very Special Valentine's Day Show; Milkshake writes and performs music that is as musically sophisticated as it is lyrically lighthearted and child-centered.
21 Trout Fishing In America; Grammy-nominated guitar/bass duo; \$15/adults, \$9/children; Also 1:30 p.m.

CONFERENCES

12 Darwin's Legacy in 21st Century Biology; 9 a.m.; Penn Museum; register: www.museum.upenn.edu; Also February 13 (Penn Museum).
Imperfect Moments: Mapplethorpe and Censorship 20 Years Later; 5:30 p.m.; Institute of Contemporary Art; info.: www.icaphila.org; Also February 13 (ICA).

EXHIBITS

Admission Donations and Hours
Arthur Ross Gallery, Fisher Fine Arts Library: free; Tues.-Fri., 10 a.m.-5 p.m.; Sat.-Sun., noon-5 p.m.
Burrison Gallery, University Club at Penn, The Inn at Penn: free; Mon.-Fri. 8 a.m.-6 p.m.
Esther M. Klein Art Gallery; free; Mon.-Sat.; 9 a.m.-5 p.m.
GSE Student Lounge; free; Mon.-Fri., 9 a.m.-5 p.m.
Institute of Contemporary Art (ICA); free admission; Wed.-Fri., noon-8 p.m.; Sat.-Sun., 11 a.m.-5 p.m.
International House; free; for hours call (215) 387-5125.
Morris Arboretum; \$14, \$12/seniors, \$7/kids 3-17, free/kids under 3 and members; Mon.-Fri. 10 a.m.-4 p.m., weekends 10 a.m.-5 p.m.
Penn Museum; \$10, \$7/seniors, \$6/children 6-17 and full-time students w/ PennCard, free/members; Tues.-Sat., 10 a.m.-4:30 p.m.; Sun. 1-5 p.m.
The Rotunda; 4014 Walnut St.; free; for hours: (215) 573-3234.
Slought Foundation; free; Wed.-Sat. 1-6 p.m.
Van Pelt-Dietrich Library; free/ID required; for hours see: <http://events.library.upenn.edu/cgi-bin/calendar.cgi>.
Wistar Institute; free; Mon.-Fri. 9 a.m.-5 p.m.

Upcoming
7 Louis I. Kahn: The Making of a Room; photographs of buildings and interiors, printed materials, and some of Kahn's furniture; Arthur Ross Gallery; *Through March 29; See Talks.*
23 Benjamin Peirce; recent photography concentrates on the human body, often in abstracted or transmuted form; Burrison Gallery; reception, *February 27, 5 p.m. Through April 3.*

Now
Contemplative Spaces, Works on Paper; collection includes ink drawings and digital/drawing prints by sculptor James Fuhrman that are essential to process of making sculpture; Burrison Gallery. *Through February 20.*
BioScapes; exhibition of the 2008 Olympus BioScapes tour, an International Digital Imaging Competition, honoring images and videos of human, plant and animal subjects as captured through light microscopes; Esther M. Klein Art Gallery. *Through February 28.*
Iyare! Splendor and Tension in Benin's Palace Theatre; more than 100 artifacts including cast bronzes, carved ivories and wood from the 16th to the 21st centuries; William B. Dietrich Gallery, Penn Museum. *Through March 1.*
Trapped in Orbit: Out of Body, Out of Mind; the work of artist and intrepid tinkerer, Charles Hobbs; Esther M. Klein Art Gallery. *Through March 1.*
Billions of Robots Heal the Human Heart; exhibition includes video about hockey player Philip Brouette who was stabbed in the heart by a jealous ex-lover and shows how his life was saved with an experimental medical nanotechnology procedure called cardiananoroboplasty; International House. *Through March 6.*
Head in the Clouds; interactive mobile installation showcasing artist Charles Hobbs' ongoing interest in light, motion and the recreation of natural phenomena through low-tech gadgetry; International House. *Through March 6.*
Himalaya: Land of the Snow Lion; 45 black and white photographs by Andrea Baldeck of the harsh and dramatic Himalaya mountain range examining ethnic, cultural and historical Tibet; Merle-Smith Gallery, Penn Museum. *Through March 8.*
Peter Weibel, Rewriter; retrospective of the work of media and conceptual artist Peter Weibel, including photos, films and other works from 1964-1975; Slought

Foundation. *Through March 11.*
Nikon Small World; the beauty of the natural world captured through the microscope; atrium, Wistar Institute. *Through March 13.*
Life in Boxes: Comic Art and Artifacts; history and development of the comic including original art, graphic novels, volumes of single panel cartoons, histories, and criticism donated by Penn alumnus Steven Rothman; Kamin Gallery, Van Pelt-Dietrich Library. *Through March 22.*
Dirt on Delight: Impulses That Form Clay; presentation of the work of 22 artists who have created significant work in clay, all of which appear to be in some state of flux or growth; ICA. *Through March 29.*
Joshua Mosley: Dread; six-minute animated video and five related bronze sculptures; the video presents an imagined conversation between the philosophers Blaise Pascal and Jean-Jacques Rousseau on the difficulty of resolving the human relationship to nature while also accepting God as the creator; ICA. *Through March 29.*
Touch Sensitive: Anthony Campuzano; witty snatches of phrases from the internet, television, the radio, signs, and personal notes are set against intensely worked backgrounds; ICA. *Through March 29.*
Surviving: The Body of Evidence; interactive exhibition explores evolution and its profound impact on humans using our own bodies as evidence; Penn Museum. *Through May 3.*
Fulfilling a Prophecy: The Past and Present of the Lenape in Pennsylvania; together with the Lenape Nation of Pennsylvania, the Museum features never-before displayed items from the private collections of Lenape people in Pennsylvania along with archaeological objects from the Museum's collections; Penn Museum. *Through September 12.*
The Texture of Trees; Andrea Baldeck photo exhibit that celebrates the botanical world in close-up and landscape; Morris Arboretum. *Through September 14.*
Odili Donald Odita: Third Space; large-scale abstract wall paintings; ICA. *Through December 6.*
Francis Johnson: Music Master of Early Philadelphia; Eugene Ormandy Gallery, Van Pelt-Dietrich Library. *Through Fall 2009.*
Amarna: Ancient Egypt's Place in the Sun; Penn Museum. *Ongoing.*
Springfield Mills; a high dynamic composition photography exhibit by local artist Guillermo Torres of the Arboretum's historic Springfield Grist Mill; lower gallery, Widener Education Center, Morris Arboretum. *Ongoing.*
Collective Imprints; visual art that celebrates the life and history of The Rotunda; The Rotunda. *Ongoing.*
meta Metasequoia; see the world from among a canopy of redwood limbs; Morris Arboretum. *Ongoing.*
A Wonderful Life: A Daughter's Tribute to a Family of Educators; Joan Myerson Shrager's digital art; Student Lounge, GSE. *Ongoing.*
Photographs from the Field; ethnographic photographs by anthropology graduate students; Museum Library, Penn Museum. *Ongoing.*
Strokes of Genius: The Art of Annie G. Hunter; Museum Library, Penn Museum. *Ongoing.*

Ongoing at the Penn Museum
Treasures From the Royal Tombs of Ur; Worlds Intertwined: Etruscans, Greeks and Romans; Canaan & Ancient Israel; Living in Balance: The Universe of the Hopi, Zuni, Navajo and Apache; Mesoamerica; The Egyptian Mummy: Secrets & Science; Raven's Journey: The World of Alaska's Native People; Buddhism: History & Diversity of a Great Tradition; Africa: The Cradle of Humankind; Polynesia: 'ahu'ula & lei niho palaoa.

Penn Museum Tours
Meet at Trescher Main Entrance. Free w/ admission and w/ PennCard. Info.: www.museum.upenn.edu.
1 Status and Survival in Mesoamerica.
7 Legacy of the Classical World.
8 Native Americans in the Southwest.
14 Highlights of the Collection.
22 Secrets of Science: Egyptian Mummies.
28 Fulfilling a Prophecy: The Past and Present of the Lenape in Pennsylvania.

FILMS

18 Film Screening and Discussion with the Director. Introduced by Kathy DeMarco; 6 p.m.; Kelly Writers House (Kelly Writers House).
College Houses Student Film Festival Sponsored by Cinema Studies
23 Gregory and Du Bois College Houses; 7:30 p.m.
24 Ware and Fisher Hassenfeld College Houses; 7:30 p.m.
25 Sky Lounge, Harrison College House; 7:30 p.m.
26 The Bridge Cinema de Lux; 8 p.m.

Center for East Asian Studies: Pop Icons of Japan Film Series
Screenings w/English subtitles. Sponsored by the Friends of the Japanese House and Garden; rm. 402, Claudia Cohen Hall; 7 p.m.
5 Godzilla.
12 Happiness of the Katakuris.
19 Ultra Man 2006.
26 Kamikaze Girls.

Cinema Studies
4 Wall-E; 7:30 p.m.; Sky Lounge, Harrison College House.
19 Birdsong (El cant dels Ocells); an evening with Catalan filmmaker Albert Serra; 7 p.m.; Ibrahim Theater, International House.
20 An Evening with Ethnographic Filmmaker Ruth Behar; screening of *Adio Keri-da*; 5 p.m.; rm. 401, Fisher- Bennett Hall.
22 Oscars Night!; 7 p.m.; Sky Lounge, Harrison College House.
International House
Screenings w/English subtitles. Tickets: \$7, \$5/members, students, seniors unless otherwise noted. Info.: www.ihousephilly.org.
6 Exhumed Films Double Feature: Creepers and Two Evil Eyes; 8 p.m.
11 Selections from the Human Rights Watch Film Festival, 7th Edition; 7 p.m.; info.: www.ihousephilly.org/humanrightswatch2009.htm; *Through February 14.*
17 Ball Don't Lie; 7 p.m.
18 30 Years of Film @ International House: Sound on Screen; 8 p.m.
21 30 Years of Film @ International House: The Janus Collection; 7 p.m.
25 Seville Southside; 7 p.m.
28 Rene Allio and Nicolas Philibert—Two Stories; 5 p.m.

MEETINGS

3 WPSA; noon-1 p.m.; Bishop White Room, Houston Hall.
4 PPSA Brown Bag Lunch; featuring Sr. Vice President and General Counsel for the University Wendy White; Ben Franklin Room, Houston Hall; noon-1:30 p.m.; RSVP: ppsas@exchange.upenn.edu.
10 PPSA Board Meeting; noon-1:30 p.m.; Sweeten Alumni Center; RSVP: ppsas@exchange.upenn.edu.
18 University Council; 4-6 p.m.; Bodek Lounge, Houston Hall; RSVP: (215) 898-7005.
26 Board of Trustees' Winter Full Board Meeting; RSVP: (215) 898-7005. Also February 27.

MUSIC

16 Ethnic Heritage Ensemble 35th Anniversary Performance; Afro-American music with traditional African instrumentation; \$12; International House (Ars Nova Workshop).
18 Melody, Melody and Meg; 6:30 p.m.; ICA.
Music Department
Free w/ PennCard. Info.: www.sas.upenn.edu/music.
10 Penn Contemporary Music Concert; presented by Professor James Primosch; 8 p.m.; Rose Recital Hall, Fisher-Bennett Hall.
Penn Presents
Info.: www.pennpresents.org.
22 American Composers Orchestra: Orchestra Underground: Collaborations, New & Green; 7:30 p.m.; Ibrahim Theater, International House; \$22 (co-sponsored by International House).

World Cafe Live
Performances daily. For a complete listing, see www.worldcafelive.com.

ON STAGE

6 One Acts Festival 2009; performing *The Red Coat* by John Patrick Shanley, *Duck Variations* by David Mamet, *The Right to Remain* by Melanie Marnich and *Icarus's Mother* by Sam Shepard; 7 p.m.; Class of '49 Auditorium, Houston Hall; \$5; Also February 7 (Theatre Arts Council).
Fast Taps at Soundworks High; Soundworks Tap Factory Tap Dancing Troupe; 8 p.m.; Iron Gate Theatre; \$8/door, \$5/Locust Walk. Also February 7, 4:30 p.m. (PAC).
Just Dance; Destination Hip Hop; 8 p.m.; Irvine Auditorium; \$9/door, \$8/Locust Walk. Also February 7, 7:30 p.m.
20 4A Presents: Diva Daughters Dupree by Kim Euell; 7:30 p.m.; Class of '49 Auditorium, Houston Hall; \$8, \$10/at door, 2 for \$14; also February 21, 2 & 2:30 p.m. (African American Arts Alliance).
26 The Glee Club Spring Show; Zellerbach Theatre, Annenberg Center; 8 p.m.; tickets: gleeclub@dolphin.upenn.edu; also February 27 & 28 (Glee Club).

Penn Presents
Tickets: www.pennpresents.org.
3 Batsheva Dance Company; Zellerbach Theatre, Annenberg Center; 7:30 p.m.; tickets \$38-\$48.
6 Subcircle; Harold Prince Theatre, Annenberg Center; 8 p.m.; tickets \$25.
19 Les Ballets Jazz de Montréal; Zellerbach Theatre, Annenberg Center; 7:30 p.m.; tickets \$38-\$48; also February 20, 8 p.m. and February 21, 2 & 8 p.m.

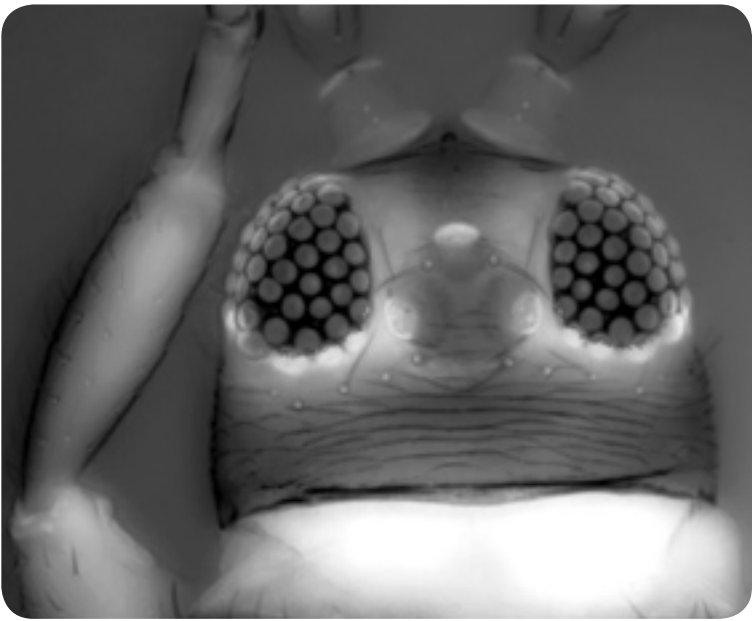
READINGS/SIGNINGS

Kelly Writers House
Events in the Arts Café unless otherwise noted. RSVP: wh@writing.upenn.edu or (215) 573-9749. Info.: www.writing.upenn.edu/~wh/.
2 We Are Ghosts: Art of Deception in the Theater of War; Alicia Puglionesi, winner of the Terry B. Heled Travel and Research Grant; 6 p.m.
3 The Song of the Distant Dove: Judah Halevi's Pilgrimage; Ray Scheindlin, author; 5 p.m. (co-sponsored by the Jewish Studies Program).
4 Writers Without Borders Presents Zhimin Li; Chinese poet and scholar; 6 p.m.

February

AT PENN

Wherever these symbols appear, more images or audio/video clips are available on our website, www.upenn.edu/almanac/.



Fluorescent magnification turns a common thrips (*Thripidae*) into an otherworldly, yet seemingly friendly, creature. The image produced by microscopist James Hayden at the Wistar Institute earned an Image of Distinction honor in the 34th Nikon Small World photomicrography contest and exhibit, on display at Wistar through March 13.

10 Reading and Conversation with Mark Halliday; poet; 6 p.m. (co-sponsored by the Creative Writing Program).
11 Speakeasy: Poetry, Prose, and Anything Goes!; 8 p.m.; also February 25.
12 Reading with Poet Tisa Bryant; noon; RSVP.
16 LIVE at the Writers House tapes; WXPN's Michaela Majoun hosts a one-hour broadcast of poetry, music and spoken-word art; 7 p.m.
17 A Celebration of Ron Silliman and The Alphabet; 6:30 p.m.
23 The Kelly Writers House Fellows Program Presents Robert Coover; 6:30 p.m.; RSVP only; also February 24, 10:30 a.m.
Theorizing Presents Rodolphe Gasché; 6 p.m.
25 Conversation between Poets Lyn Hejinian and Jennifer Scappettone; noon; RSVP.
PoemTalk with Alan Loney; 4:30 p.m.

Penn Bookstore
Info.: www.upenn.edu/bookstore.
2 The Mindful Leader—Ten Principles for Bringing Out the Best in Ourselves and Others; Michael Carroll; 6 p.m.
7 The Last Lincolns; Charles Lachman; 1 p.m.
9 Tokyo Fiancée; Amelie Notcomb; 6 p.m.
10 Moody Minds Distempered: Essays on Melancholy and Depression; Jennifer Radden; 6 p.m. (co-sponsored by the Center for Bioethics).
11 Banquet at Delmonico's: Great Minds, the Gilded Age, and the Triumph of Evolution in America; Barry Werth; 6 p.m.
12 Shopping for Love; Rachel Lesser; 7 p.m.
17 I Smile Back; Amy Koppelman; 6 p.m.
21 War of the Bloods in my Veins; Jiwe Morris; 1 p.m.
23 Modern Noise, Fluid Genres; Jeremy Wallach; 6 p.m.
24 Whatever it Takes: Geoffrey Canada's Quest to Change Harlem and America; Paul Tough; 6 p.m.
26 X Saves the World; Jeff Gordinier; 6 p.m.

SPECIAL EVENTS

1 Undergrad Superbowl Party; Penn Newman Center; 6 p.m.
4 Fels Institute of Government Information Session; learn about the part-time programs available; 5 p.m.; RSVP: www.fels.upenn.edu (Fels Institute).
8 Tu B' Shevat Family Day; celebrate the Jewish New Year of Trees with interactive demos about trees and what they produce. Kids will take home a tree seedling that could produce birch beer; 1-3 p.m.; Morris Arboretum (Arboretum).
11 V-Day Production of Vagina Monologues; benefit production to raise awareness and funds for local organizations working to end violence against women and girls; 8 p.m.; Irvine Auditorium; \$10/door, \$8/Locust Walk; also February 13, 8 p.m.; info.: www.upennvday.org.
15 Annual Darwin Day—Year of Evolution Program: Darwin and Evolution Teach-In; celebration of Charles Darwin including short lectures, films, children's activities and an appearance by Charles Darwin; 1 p.m.; free with Museum admission; Penn Museum (Penn Museum).
17 Women's Week Keynote Address: Maya Angelou; Irvine Auditorium; \$10, on sale February 9 at the Penn Women's Center ; Info.:www.pennwomen.org.

21 World Culture Family Day: Annual Celebration of African Cultures; 20th annual Celebration of African Cultures includes traditional storytelling, African dance and music performances, workshops, children's activities, and more; 11 a.m.-4 p.m.; free w/ Museum admission; Penn Museum (Penn Museum).
28 Beats, Brews and BBW: 5th Annual Beer Festival!; sample offerings of about 30 local and regional breweries and live performances; 1 p.m., noon/VIP; World Cafe Live; \$40, \$55/VIP; ages 21+ (World Cafe Live).
Red Cross Blood Drives
Info.: (215) 451-4971
2 Pan-Asian American Community House; Bodek Lounge, Houston Hall; register: <http://givesblood.org/go.php?bdc=198108>.
5 Fiji; Hall of Flags, Houston Hall; register: <http://givesblood.org/go.php?bdc=845251>.
23 ZBT House; Lounge, ZBT House; <http://givesblood.org/go.php?bdc=418280>.

SPORTS

Info./tickets: www.pennathletics.com.
6 (M) Basketball vs. Columbia; 7 p.m.
7 (W) Tennis vs. Virginia Commonwealth; noon.
Wrestling vs. Brown; noon.
(M) Squash vs. Harvard; 1 p.m.
(W) Squash vs. Harvard; 2 p.m.
(M) Basketball vs. Cornell; 7 p.m.
(W) Squash vs. Dartmouth; 11 a.m.
(M) Squash vs. Dartmouth; 11 a.m.
(W) Tennis vs. Richmond; noon.
13 (W) Basketball vs. Brown; 7 p.m.
14 Gymnastics vs. Ursinus/West Chester/Southern Connecticut; 1 p.m.
(W) Basketball vs. Yale; 7 p.m.
20 (W) Tennis vs. George Washington; noon.
(M) Basketball vs. Dartmouth; 7 p.m.
21 (W) Lacrosse vs. Drexel; 1 p.m.
(M) Basketball vs. Harvard; 6 p.m.
22 (W) Tennis vs. Maryland; noon.
(M) Tennis vs. Navy; 3 p.m.
25 (M) Tennis vs. Saint Joseph's; 4 p.m.
27 (W) Lacrosse vs. California; 7 p.m.
(M) Basketball vs. Yale; 7 p.m.
28 (M) Basketball vs. Brown; 7 p.m.

Almanac

Suite 211 Sansom East, 3600 Chestnut St.
Philadelphia, PA 19104-6106
(215) 898-5274 or 5275 FAX (215) 898-9137
E-mail: almanac@upenn.edu
URL: www.upenn.edu/almanac

Unless otherwise noted all events are open to the general public as well as to members of the University. For building locations, call (215) 898-5000 between 9 a.m. and 5 p.m. or see www.facilities.upenn.edu or the University's website, www.upenn.edu. Listing of a phone number normally means tickets, reservations or registration required.
Almanac carries an *Update* with additions, changes and cancellations if received by Monday noon prior to the week of publication. Members of the University may send notices for the *Update* or *March AT PENN* calendar. The deadline for the *March AT PENN* is February 10.
Events on this calendar are subject to change. More information can be found on the sponsoring department's website. Sponsors are listed in parentheses.

4 *The Role of MicroRNAs in Zebrafish Development*; Antonio J. Giraldez, Yale University; noon; rm. 252, BRB II/III (CRRWH).

Climate Change: Its Influence on Investing and the Opportunities Created for Economic Gain; Bernard J. David, legal studies and business ethics; noon; Carolyn Hoff Lynch Auditorium, Chemistry Bldg. (Institute for Environmental Studies).

Spatio-temporal Compartmentalization of Key Metabolic/Physiological Processes During Muscle Precursors Differentiation; Ertugrul M. Ozbudak, Stowers Institute for Medical Research; 3 p.m.; rm. 318, Lynch Laboratories (PGFI).

The Sex Education of a Sinologist; Susan Mann, University of California, Davis; 4:30 p.m.; rm. 200, College Hall (CEAS).

Mysteries of Translation; Alastair Reid, poet; 5 p.m.; Terrace Room, Claudia Cohen Hall; RSVP: www.phf.upenn.edu (Penn Humanities Forum).

Built of Memory and Hope: The Sacred City of Abydos, Egypt; Josef Wegner, Penn Museum; 6 p.m.; Penn Museum; \$5 (Museum).

5 *Three Views of RNA Catalysis: Ribosomes, Ribozymes and Riboswitches*; Scott Strobel, Yale University; noon; Austrian Auditorium, CRB (Biochemistry and Biophysics).

MFA Program Lecture; James Duesing, animator; 5:30 p.m.; rm. B3, Meyerson Hall (PennDesign; Penn Libraries).

Young Friends Program—The Score: How the Quest for Sex Has Shaped the Modern Man; Faye Flam, *Philadelphia Inquirer*; 6 p.m.; Penn Museum; cash bar, cocktails and mingling to follow; \$10, \$5/members (Museum).

Amores: Paul Muldoon and Dan Gunn on Translation; 6:30 p.m.; Slought Foundation (Slought).

6 *LDI Research Seminar*; Joseph J. Doyle, Jr., Massachusetts Institute of Technology; 10:30 a.m.; Colonial Penn Center Auditorium; RSVP: www.upenn.edu/ldi/calendar.html (LDI and Health Care Management).

Lunch with Local Artists; Nicole Canuso, Nicole Canuso Dance Company; noon; Platt Student Performing Arts House; info.: (215) 898-2312 (University Life Arts Initiatives).

Las Indígenas Están Cambiando: The Biocultural Impact of Westernization on Health and Fertility in Latin American Indigenous Women; Claudia Valeggia, anthropology; noon; rm. 436, Claudia Cohen Hall (Women's Studies).

Fibrin Deposition in the Acutely Injured Lung: Role of the Alveolar Epithelium; Lorrain B. Ware, Vanderbilt University; 12:15 p.m.; seminar room, John Morgan Bldg. (IFEM).

Louis I. Kahn: The Making of a Room Gallery Lecture; Halpern-Rogath Curatorial Seminar students and George Marcus, Design; 4:30 p.m.; Location TBA; *See Exhibits* (Art History; Master's of Liberal Arts; Arthur Ross Gallery).

Learning from Mindfulness; Jon Kabat-Zinn, stress expert; 7:30 p.m.; Zellerbach Theatre, Annenberg Center; \$35 (Penn Presents).

LDI Health Policy Seminar; Salvatore DiMasi; Massachusetts State Senate; noon; Colonial Penn Center Auditorium; RSVP: www.upenn.edu/ldi/calendar.html (LDI).

9 *The World As I See It*; Nicholas Kristof, *New York Times*; 6:30 p.m.; rm. G06, Jon M. Huntsman Hall (Office of the Provost).

10 *Recognition Rights and Mental Health Consumers*; Jennifer Radden, University of Massachusetts; noon; rm. 321, 3401 Market Street (Bioethics).

MLK Nursing Lecture; Blondell Reynolds Brown, Councilwoman at Large; noon; School of Nursing (Nursing).

Genomic DNA Foot Printing: Identifi-

cation of Transcription Factor Binding Sites across the Genome; Jay Hesselberth, University of Washington; 3 p.m.; rm. 318, Lynch Laboratories (PGFI).

An Introduction to the Phenomenology of Television: What Happens When I Turn on the TV Set; Paddy Scannell, University of Michigan; 6:15 p.m.; rm. 109, Annenberg School for Communication (ASC).

11 *Trophoblast Adaptation to Hypoxic Injury*; Yoel Sadovsky, University of Pittsburgh; noon; rm. 252, BRB II/III (CRRWH).

Will China Run Out of Water?; Chun-miao Zheng, University of Alabama; noon; Carolyn Hoff Lynch Auditorium, Chemistry Bldg. (Institute for Environmental Studies).

Chromatin Deposition & Function of Histone Variant H2A.Z; Michael Kobor, University of British Columbia; 4 p.m.; Grossman Auditorium, Wistar Institute (Wistar).

Tragedy is Easy, Comedy is Hard, and Love is Damn Near Impossible; Amy Bloom, writer; 5 p.m.; Harrison Auditorium, Penn Museum; RSVP: www.phf.upenn.edu (Penn Humanities Forum).

Cinema Studies Program; Lynne Sachs, filmmaker; 5 p.m.; rm. 401, Fisher-Bennett Hall (Cinema Studies).

12 *Proteome Dynamics—System-Wide Studies of Translation Regulation and Protein Turnover*; Christine Vogel, University of Texas, Austin; 3 p.m.; rm. 318, Lynch Laboratories (PGFI).

MFA Program Lecture; Patti Smith, visual artist; 5:30 p.m.; rm. B1, Meyerson Hall (PennDesign; ICA).

Year of Evolution Program—Finding Darwin's God: A Scientist's Search for Common Ground between God and Evolution; Kenneth R. Miller, Brown University; 6 p.m.; Penn Museum (Museum).

13 *Host Defense in the Lungs During Pneumonia*; Claire M. Doerschuk, University of North Carolina, Chapel Hill; 12:15 p.m.; seminar room, John Morgan Bldg. (IFEM).

17 *The Path Toward a High Value Health Care System*; L. Gregory Paulson, National Committee for Quality Assurance and Ellen Kurtzman, George Washington University; 4 p.m.; Terrace Room, Claudia Cohen Hall; RSVP: aging@mail.med.upenn.edu (Institute on Aging).

Jews and The Business of Rock 'n' Roll; Jonathan Karp, Binghamton University, SUNY; 5 p.m.; Class of 1955 Room, Van Pelt-Dietrich Library (Jewish Studies; History; CFAS).

18 *Adipokines as the Link between Obesity and Obesity-Related Malignancies*; Christos Mantzoros, Harvard University; noon; rm. 252, BRB II/III (CRRWH).

Antagonism of Host Antiviral Factors by HIV Accessory Proteins; Paul Bieniasz, Aaron Diamond AIDS Research Center; noon; Austrian Auditorium, Clinical Research Building (Penn Center for AIDS Research; Microbiology).

Title TBA; Paul Bieniasz, Rockefeller University; noon; Austrian Auditorium, CRB (CFAR).

Ovarian Cancer: A Platform for Translational Research; Michael V. Seiden, Fox Chase Cancer Center; 4 p.m.; Grossman Auditorium, Wistar Institute (Wistar).

Global Islamic Communities Speaker Series; Muqtadar Khan, University of Delaware; 3 p.m.; rm. 202, Williams Hall (Asian-American Studies; South Asia Center; Middle East Center).

Elite Politics and Monetary Swings in China: Then and Now; Victor Shih, Northwestern University; 4:30 p.m.; rm. 245, Jon M. Huntsman Hall (CEAS; Joseph H. Lauder Institute of Management & International Studies; Penn-Lauder CIBER).

Sweet Land of Liberty: The Forgotten Struggle for Civil Rights in the North; Thomas Sugrue, history and sociology;

4:30 p.m.; lecture hall, McNeil Center for Early American Studies; *February 24* reception; 4:30 p.m., Bodek Lounge, Houston Hall (School of Arts and Sciences).

19 *A Randomized Controlled Feasibility Trial of Alcohol Consumption and Fire-arm Use*; Brendan Carr, emergency medicine; 9:30 a.m.; Terrace Room, Claudia Cohen Hall (Penn Science Injury Forum).

Dynamics of PKA Signaling; Susan Taylor, University of California, San Diego; noon; Austrian Auditorium, CRB (Biochemistry and Biophysics).

Kano Sansetsu and The Song of Everlasting Sorrow; Matthew McKelway, Columbia University; 5 p.m.; rm. B26, Stiteler Hall (Humanities Colloquium).

ARCE Lecture: Egyptian Landscape Painting—The Old Kingdom: Mastaba Chapel as a Map of the World; Ann Macy Roth, New York University; 6:30 p.m.; Penn Museum; \$5, \$3/members, free/ARCE-PA members; info.: (215) 898-4890 (Penn Museum).

20 *Mechanotransduction in Acute Lung Injury*; Christopher M. Waters, University of Tennessee; 12:15 p.m.; seminar room, John Morgan Bldg. (IFEM).

LDI Health Policy Seminar; Mark A. Peterson, University of California, Los Angeles; noon; Colonial Penn Center Auditorium; RSVP: www.upenn.edu/ldi/calendar.html (LDI).

22 *The Authentic Garden: Five Principles for Celebrating a Sense of Place*; Claire Sawyers, Swarthmore College; 2 p.m.; Morris Arboretum; free with admission, see www.business-services.upenn.edu/arboretum for registration (Morris Arboretum; Klein Endowed Lecture).

23 *Empire, Architecture, and the City: French-Ottoman Encounters, 1830-1914*; Zeynep Celik, New Jersey Institute of Technology; 2 p.m.; rm. 314, College Hall (Middle East Center).

24 *The Library's Learning Partnership with the University Community*; Marjorie Hassen, Penn Libraries; 1 p.m.; University Club (Penn Women's Club).

Climate Change: Nature and Action; Thomas E. Lovejoy, The H. John Heinz III Center for Science, Economics, and the Environment; 4:30 p.m.; rm. G 50, Jon M. Huntsman Hall (Penn Program on Regulation).

25 *cAMP-Dependent Protein Kinase Signaling in Endocrine and Other Tumorigenesis: Lessons from Human Disease and Animal Models*; Constantine Stratakis, National Institutes of Health; noon; rm. 252, BRB II/III (CRRWH).

Cinema Studies Colloquium; Francois Massonnat, PhD student, romance languages; noon; rm. 330, Fisher-Bennett Hall (Cinema Studies).

Third World Hydrology: Northern Afghanistan Rivers; Vincent W. Uhl, Uhl, Baron, Rana & Associates, Inc.; noon; Carolyn Hoff Lynch Auditorium, Chemistry Bldg. (Institute for Environmental Studies).

Title TBA; Michael Green, University of Massachusetts; 4 p.m.; Grossman Auditorium, Wistar Institute (Wistar).

26 *A Structural Biology Look at Gene Regulation: RNA Transcription, Processing and Degradation Machinery Visualized by Electron Microscopy*; Eva Nogales, University of California, Berkely; noon; Austrian Auditorium, CRB (Biochemistry and Biophysics).

Cultural Mobility: The Strange Travels of Shakespeare's Cardenio; Stephen Greenblatt, Harvard University; 5 p.m.; Rainey Auditorium, Penn Museum; RSVP: www.phf.upenn.edu (Penn Humanities Forum).

27 *Too Much for the Too Little: Hypoxemia and the Neonatal Lung*; Vincet Bhandari, University of Massachusetts; 12:15 p.m.; seminar room, John Morgan Bldg. (IFEM).

Class of 1923 Arena; 3130 Walnut St.; admission: weekday \$5.50, weekend \$6.50, \$1 off w/PennCard; skate rental \$2.50; group rates and skating lessons offered; hours: www.upenn.edu/icerink.

New Parents @ Penn; meets every other Tuesday at 5:30 p.m.; contact Penn Women's Center (215) 898-8611 for dates.

Jazzercise; 5:30-6:30 p.m.; Tuesdays & Thursdays; Newman Center; \$8/class; \$6/students; contact Carolyn Hamilton: (215) 662-3293 (days) or (610) 446-1983 (evenings).

4 *Vinaya Yoga*; 5:30-7 p.m.; Wednesdays; Penn Museum; \$12/class; participants should bring a yoga mat and towel; info.: (215) 898-4890. *Also February 11, 18 & 25.*

9 *Rape Aggression Defense (RAD) Class*; hands-on physical defense training for women only; session III: Mondays, *February 9-March 2*, 5:30-8:30 p.m.; session IV: Wednesdays, *February 18-March 11*, 5:30-8:30 p.m.; Session V: Saturdays, *February 21 & 28*, 9 a.m.-3 p.m.; 4040 Chestnut St., Division of Public Safety; register: (215) 898-3590 (UPPD).

18 *To Be a Major in Cinema Studies*; meet Cinema Studies students and faculty over dinner and a movie; 6 p.m.; Sky Lounge, Harrison College House (Cinema Studies).

Christian Association
Info.: www.upennca.org.

3 *Slanguage*; 2:30 p.m. *Also February 10, 17 and 24.*

5 *African Dinner: Liberia*; 6:30 p.m.

Faculty & Staff Discount Ticket Night
All events held at the Palestra. Register: www.pennathletics.com or contact Athletic Ticket Office at (215) 898-6151.

7 *Wrestling*—Penn vs. Brown/Harvard; noon; \$1 tickets with PennCard.

21 *Men's Basketball*—Penn vs. Harvard; 6 p.m.; \$7/upper-end tickets with PennCard.

Free Library—Walnut St. West Branch
201 S 40th St.; info.: (215) 685-7671.

2 *Television: Making the Transition from Analog to Digital*; 6 p.m.

3 *Little Tales* for Tykes; 11 a.m.

4 *Celebrate Chinese New Year*; 2 p.m.

5 *Gaming for Children and Teens*; 2 p.m.

7 *Toddler Story Time Series*; 11 a.m.

9 *Book Discussion: The Soloist*; 6:30 p.m.

10 *Little Tales* for Tykes; 11 a.m.

13 *Gaming for Children and Teens*; 3 p.m.

14 *Toddler Story Time Series*; 11 a.m.

17 *Little Tales* for Tykes; 11 a.m.

PennFit: Department of Recreation
Events take place at Pottruck Health and Fitness Center. Open to faculty, staff and students. Register: (215) 898-6100 or www.upenn.edu/recreation.

6 *Free Body Composition Measurements*; noon.
Intro. to Yoga; 5:30 p.m.

16 *Women on Weights*; 12:15 p.m.

25 *Women on Weights*; 5:30 p.m.
Eating for Optimal Health; 12:15 p.m.

Learning and Education: HR
Open to faculty and staff. Register: www.hr.upenn.edu/coursecatalog/default.aspx.

5 *American Management Association's Strategies for Developing Effective Presentation Skills*; 9 a.m.-5 p.m.; \$75. Through February 6.

18 *Brown Bag Matinee—The Cuban Missile Crisis: A Case Study in Decision Making and Consequences*; noon-1 p.m.

20 *Franklin Covey's FOCUS*; 9 a.m.-5 p.m.; \$75.

24 *Career Focus Brown Bag: Self Assessment Workshop*; noon-1 p.m.

Morris Arboretum
Register: (215) 247-5777 ext. 156 or 125.

14 *Tree and Shrub Identification*; intensively study 160 native and introduced trees, shrubs, and vines common in Pennsylvania ; 9 a.m.-4 p.m.; 5 Saturdays through March 28; \$450.

21 *Soils Simplified*; learn the basics of soil and how to keep it healthy; 10 a.m.-noon; \$38, \$33/members.

25 *Tree Appraisal*; explore the history and process of tree and landscape appraisal; 9 a.m.-4 p.m.; \$125.

27 *I.S.A. Arborist Certification Course for Spanish Speakers*; arboricultural theory and basic arboricultural skills; 9 a.m.-4 p.m.; 6 Fridays through April 3; \$450.

28 *Miniature Garden: "Portraits" in Color Pencil*; learn color pencil art techniques; 10 a.m.-1 p.m.; \$90, \$75/members; continues March 7.

Quality of Worklife: HR
Open to faculty and staff. Register: www.hr.upenn.edu/coursecatalog/default.aspx.

11 *10 Strategies for Improving Your Sleep*; noon-1 p.m.

Technology and Training Services
Classes at ISC labs, 3650 Chestnut St.; 9 a.m.-4:30 p.m., unless otherwise noted. Open to faculty, staff, and students; register: www.upenn.edu/computing/isc/training.

2 *Access 2007 Intro.*; \$357; 2 days.

4 *Excel 2007 Intro.*; \$190.
Word 2007 Advanced; \$190.
Lunchtime Learning: What's New in FileMaker Pro 10; noon-2 p.m. free.

5 *PowerPoint 2007 Beyond the Basics*; \$190.

9 *BusinessObjects XI Desktop Intelligence Advanced*; \$380.

10 *Advanced Business Objects XI Desktop Intelligence Training*; \$380.

12 *Excel 2003 Intro.*; \$190.
Photoshop CS3 Intro.; \$494; 2 days.

13 *Excel 2003 Intermediate*; \$190.

16 *FilemakerPro Beyond the Basics*; \$260.

17 *Cascading Style Sheets (CSS)*; \$570; 2 days.
Lunchtime Learning: Supporting the PennNet Phone Service; noon-1 p.m.; free.

19 *Flash CS3 Intro.*; \$570; 2 days.
Microsoft Project 2007 Intro.; \$448; 2 days.

23 *Access 2003 Advanced*; \$448; 2 days.

25 *PowerPoint 2003 Intro.*; \$190.

26 *Excel 2007 Advanced*; \$190.

27 *Excel 2003 Advanced*; \$190.
Outlook 2007 Intro.; \$190.

Weigle Information Commons
Held in Class of 1968 Seminar Room, Van Pelt-Dietrich Library, unless otherwise noted. Register: wic.library.upenn.edu/workshops.

2 *BlackBoard Walk-In*; 11 a.m.; rm. 127, Van Pelt-Dietrich Library.

4 *PhotoShop Layers*; 10 a.m.

9 *PowerPoint Basics*; 2 p.m.

10 *BlackBoard Walk-In*; 1 p.m.; rm. 127, Van Pelt-Dietrich Library.

11 *FileMaker Pro*; noon.

16 *PhotoShop Basics*; 2 p.m.

18 *iMovie*; 10 a.m.
Refworks; noon; Goldstein Electronic Classroom, Van Pelt-Dietrich Library.
Reducing Nervousness; 5 p.m.

23 *ComicLife*; 2 p.m.

25 *Patent Research*; noon.
Reading Strategies; 5 p.m.

27 *ComicLife*; 1 p.m.

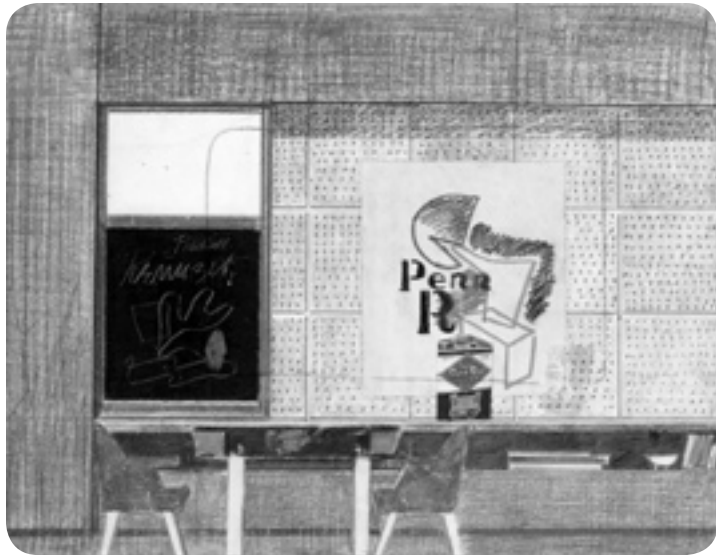


Ballets Jazz de Montréal will perform at the Zellerbach Theatre February 19 through the 21st. Ballets Jazz de Montréal has morphed from a strictly jazz genre to an eclectic contemporary repertoire. The company will present the North American premiere of Rossini Cards, a work by Mauro Bigonzetti, choreographer of Italy's Compagnia Aterballetto. In addition, Brazil's Rodrigo Pederneiras, choreographer for Grupo Corpo, will be represented by MAPA, a steamy fusion of samba, capoeiro, xaxado and contemporary dance. See On Stage.

Right: Radbill Oil Company, Philadelphia, PA, 1944-47; Elevation study of Boardroom Interior Pencil, colored pencil and printed materials on vellum. Image courtesy of the University of Pennsylvania Archives, part of the exhibit, Louis I. Kahn: The Making of a Room, opening at the Arthur Ross Gallery on February 7. See Exhibits.



Above: Kathy Butterly, *Cenote*, 2004, porcelain, earthenware and glaze. Private collection; courtesy of Tibor de Nagy Gallery, New York; *Part of Dirt on Delight*: Impulses That Form Clay, on display now through March 29 at ICA. See Exhibits.



February

AT PENN