

ACADEMIC CALENDAR

22 Thanksgiving Break begins at close of classes.
27 Thanksgiving Break ends at 8 a.m.

CHILDREN’S ACTIVITIES

5 *Painting the Bamboo Forest*; make Japanese ink paintings; 1 p.m.; Morris Arboretum; \$15, \$13/members; register: (215) 247-5777, ext. 156 (Arboretum).
11 *Modern Egyptian Tile Painting*; ages 7+; 10 a.m.; Penn Museum; \$10, \$5/members; register: (215) 898-4016 (Museum).
Kids’ Critter Workshop; create a fresh flower arrangement in a ceramic pumpkin with sweet treats; ages 5-12; 1:30 p.m.; Morris Arboretum; \$30, \$27/members; info: (215) 247-5777, ext. 156 (Arboretum).
Peanut Butter & Jams: World Cafe Live
Shows begin 11:30 a.m.; \$10/adults, \$7/children. Info.: www.worldcafelive.com.
4 *The Cat’s Pajamas*; captures kids’ imagination and engages the adults.
11 *Red Grammer*; playful singer/songwriter.
18 *Lunch Money*; indie kid-rock.
25 *SteveSongs*; educational, fun songs.

CONFERENCES

4 *Generative Components II*; NLSO design charette; 11 a.m.; Tuttleman Auditorium, ICA; *continues November 5*, 11 a.m.; info.: www.design.upenn.edu (Architecture).
5 *Jews in France: Crisis and Continuity*; 1-5 p.m.; Class of 1955 Room, Van Pelt-Dietrich Library; info.: (215) 898-6654 (Jewish Studies Program).
7 *Traveling as an Academic*; 5-7 p.m.; Conference Room, Penn Humanities Forum (East Asian Languages & Civilizations).
8 *Thomas Langfitt, Jr. Memorial Symposium—Innovative Approaches to Universal Health Coverage: Massachusetts and Beyond*; 6 p.m.; auditorium, BRB II/III; RSVP: nstine@mail.med.upenn.edu (LDI).
9 *Veterinary Public Health in a Global Economy*; 9:30 a.m.-7 p.m.; Zellerbach Theatre, Annenberg Center; *continues November 10*, 8:30 a.m.-4 p.m.; info./register: www.vet.upenn.edu/vphconf (Vet Med).
10 *Current Research in Neurodegenerative Diseases*; 8:30 a.m.-5 p.m.; auditorium, BRB II/III; info.: (215) 662-4474 (Center for Neurodegenerative Disease Research).
The Haves and the Have Nots: An Assessment of Disability in the Middle East; 9:30 a.m.-12:30 p.m.; rm. 205, College Hall; RSVP: fks@history.upenn.edu (Middle East Center).
13 *Philadelphia Global Water Initiative Kick-Off*; 8 a.m.-4 p.m.; Houston Hall; register: niva@sas.upenn.edu; info.: (215) 573-3164 (Earth & Environmental Science).
16 *Targeted Nanocarriers and Therapeutics*; 8:30 a.m.-6:30 p.m.; auditorium, BRB II/III; register: www.itmat.upenn.edu/research_ptt.shtml (ITMAT).
Responses to Global Warming: The Law, Economics, & Science of Climate Change; 9:30 a.m.-5:45 p.m.; Levy Conference Center, Law School; *continues November 17*, 9 a.m.-2:30 p.m.; register: www.pennumbra.com/symposia (Law).
17 *Virus Structure and Evolution Symposium*; 9:30 a.m.-4:30 p.m.; Grossman Auditorium, Wistar Institute; register: (215) 898-3774 (Wistar).

EXHIBITS

Admission Donations and Hours
Annenberg Center; free; Mon.-Fri., 9 a.m.-5 p.m.
Arthur Ross Gallery, Fisher Fine Arts Library; free; Tues.-Fri., 10 a.m.-5 p.m.; Sat.-Sun., noon-5 p.m.
Burrison Gallery; University Club at Penn; free; Mon.-Fri., 8 a.m.-6 p.m.
Charles Addams Fine Arts Gallery, Charles Addams Fine Arts Hall; free; Mon.-Fri., 10 a.m.-5 p.m.
Esther Klein Gallery; free; Mon.-Sat., 9 a.m.-5 p.m.
Fox Gallery, Logan Hall; free; Mon.-Fri., 9 a.m.-5 p.m.
Graduate School of Education (GSE) Student Lounge; free; Mon.-Fri., 9 a.m.-5 p.m.
ICA; \$6, \$3/artists, seniors, students over 12; free/members, children 12 & under, w/PennCard; Sun., 11 a.m.-1 p.m.; Wed.-Fri., noon-8 p.m.; Sat.-Sun., 11 a.m.-5 p.m.
International House; free; for hours call (215) 387-5125.
Kelly Writers House Gallery; free; Mon.-Thurs., 10 a.m.-10:30 p.m.; Fri., 10 a.m.-5 p.m.; Sat., noon-11 p.m.; Sun., 6-11 p.m.
Meyerson Gallery, Meyerson Hall; free; Mon.-Fri., 9 a.m.-5 p.m.
Morris Arboretum; \$10, \$8/seniors, \$5/students & youth 3-18, free w/ PennCard, children under 3; Mon.-Fri., 10 a.m.-4 p.m.; Sat.-Sun., 10 a.m.-5 p.m.
Penn Museum; \$8, \$5/seniors, children 6-17, full-time students w/ID, free/members, w/PennCard, children under 6; Tues.-Sat., 10 a.m.-4:30 p.m.
Slought Foundation; free; Wed.-Sat., 1-6 p.m.
Van Pelt-Dietrich Library; free; for hours see: <http://events.library.upenn.edu/cgi-bin/calendar.cgi>.

Upcoming
9 *Benjamin Pierce: Photographs, 2003-2006*; Burrison Gallery; reception: 5:30 p.m. *Through December 22*.
10 *Art Within Reach*; helping underserved audiences experience arts and culture by increasing accessibility; reception: 5:30 p.m.; Esther Klein Gallery. *Through December 29*.

12 *Amarna, Ancient Egypt’s Place in the Sun*; artifacts from the period of King Tutankhamun and from the 1920s excavations of Amarna; reception: noon; Penn Museum. *Through October 2007*.
13 *The Figurative*; works by artists Betty Schaefer and Shirley Steele; Kelly Writers House; reception: *November 15*, 6 p.m. *Through December 22*.
Views from the Penn Lens II; images by Penn students who studied abroad and international students who are studying in Philadelphia; International House. *Through December 22*.
16 *Installation Exhibition*; Charles Addams Gallery; reception: 5 p.m. *Through November 29*.
24 *Holiday Garden Railway Display*; lights and holiday décor adorn the Garden Railway for the holiday season; Morris Arboretum. *Through December 31*.
25 *MFA 2nd Year Exhibition and Auction*; Meyerson Galleries. *Through December 6*.
27 *Photo Exhibit*; from *Military Psychology, Clinical & Operational Applications* by Drexel professor Eric Zillmer; International House. *Through December 15*. *See Readings/Signings*.

ICA Programs/Events
Info.: www.icaphila.org.
5 *Free Sunday Tour*; explore the definition of drawing in John Armleder’s work with Ph.D. candidate John Vick; 1 p.m.
8 *Whenever Wednesday: Talk20—On Drawing*; ten presenters select and narrate 20 slides each on the topic of drawing; 6 p.m.
29 *Whenever Wednesday: Panel—Making Marks*; examines the influence of drawing in the practice of artists; 6 p.m.
30 *Fugitive Artist*; Michael Lobel, SUNY Purchase; 5:30 p.m.

Now
Mid-Atlantic Region Juried Student Snapshot Exhibition; Upper Gallery, Meyerson Hall; reception: *November 10*, 5 p.m. *Through November 11*.
MFA Photography; Charles Addams Gallery; reception: *November 10*, 5 p.m. *Through November 11*.
Life in Fondwa: Daily Struggle, Eternal Hope; photographs of life in rural Haiti by 2006 Penn grad Rebecca Sherman; International House & Kelly Writers House. *Through November 12*.
The Philly Vernacular Spectacular Extravaganza; Lower Gallery, Meyerson Hall; reception: *November 10*, 5 p.m. *Through November 24*.
Society for Photographic Educators; Charles Addams Gallery, Meyerson Gallery & Fox Gallery. *Through November 24*.
Connecting Cultures: Kids Across the World; photographs and video featuring images of children, their families & friends; Merle Smith Gallery, Penn Museum. *Through November 26*.
Crises; film, digital video and experimental multimedia to commemorate the anniversaries of 9/11 and Hurricane Katrina; Plaza Lobby, Annenberg Center. *Through mid-December*.
Gulliver’s Reading: Jonathan Swift’s Library and Reading; Rosenwald Gallery, reconstructs a large portion of books owned or read by Swift; Van Pelt-Dietrich Library. *Through December 15*.
About Nothing; works on paper by John Armleder from 1962-2007; ICA. *Through December 17*.
Fables; the urge to tell a story merges with the desire to dismantle one in works that represent a range of media; ICA. *Through December 17*.
Fertilizers: Olin/Eisenman; reminiscent of several key elements of the partners’ many unbuilt projects, an abstract landscape of diverse forms and displaced ground fill the space; ICA. *Through December 17*.
Ramp Project: Irene Fortuyn; cut and bronzed tree branches create abstract patterns on the walls and form spaces where psychological and emotional effects can be loosened; ICA. *Through December 17*.
Primal Secretions: A Günter Brus Retrospective; photos and videos of the artist’s past performances; Slought Foundation. *Through December 23*.
In Search of Israeli Art; photographs by Israeli artist Dani Shoshan; Slought Foundation. *Through December 23*.
Trouble in Paradise: The Art of Polynesian Warfare; considers the functions and decorative elements of war clubs; Dietrich Gallery, Penn Museum. *Through December 31*.
Francisco Goya y Lucientes: Los Caprichos: An Early Edition from the Collection of Mr. and Mrs. Arthur Ross; celebrates the 25th anniversary of association between the Arthur Ross Foundation and Penn; Arthur Ross Gallery. *Through January 7, 2007*.
Literae Humaniores: Treasures from the University of Pennsylvania Library; books & manuscripts; reception: *November 2*, 5:30 p.m.; Kamin Gallery, Van Pelt-Dietrich Library. *Through February 16, 2007*.
Under European Eyes: Conquistadors & Arts of the New World; artifacts that reveal how Europeans perceived the arts of their newly conquered subjects; Penn Museum. *Through February 26, 2007*.

Coming to the Small Screen: Ormandy & Television; Eugene Ormandy Gallery, Van Pelt-Dietrich Library. *Ongoing*.
meta Metasequoia; see the world from among a canopy of redwood limbs; Morris Arboretum. *Ongoing*.
A Wonderful Life: A Daughter’s Tribute to a Family of Educators; Joan Myerson Shrager’s digital art; Student Lounge, GSE. *Ongoing*.

Ongoing at the Penn Museum
Worlds Intertwined: Etruscans, Greeks and Romans; Canaan & Ancient Israel; Living in Balance: The Universe of the Hopi, Zuni, Navajo and Apache; Mesoamerica; The Egyptian Mummy: Secrets & Science; Raven’s Journey: The World of Alaska’s Native People; Buddhism: History & Diversity of a Great Tradition; Africa: The Cradle of Humankind; Polynesia: ‘ahu’ula & lei niho palaoa.
Penn Museum Tours
Meet at Trescher Main Entrance; 1:30 p.m., unless otherwise noted; free with admission donation. Info.: www.museum.upenn.edu.
4 *Year of Egypt: Mummies and the Afterlife*; 11:30 a.m.
Etruscan/Roman: Influence of Trade.
5 *Mythical Beasts in Ancient China*.
11 *Highlights of the Collection*.
18 *The Classical World*.
19 *Egypt: Deciphering the Hieroglyphs*.

FILMS

Chinese Film Series
7 p.m.; rm. 202, Williams Hall.
14 *House of Flying Daggers*.
28 *Kung Fu Hustle*.
Cinema Studies
Info.: <http://cinemastudies.sas.upenn.edu>.
1 *Abre los Ojos*; 9 p.m.; Heyer Sky Lounge, Harrison College House.
8 *City of God*; 9 p.m.; Heyer Sky Lounge, Harrison College House.
9 *Zentropa*; 5 p.m.; rm. 201, Fisher-Bennett Hall.
15 *Tsotsi*; 9 p.m.; Heyer Sky Lounge, Harrison College House.
16 *The Draughtsman’s Contract*; 5 p.m.; rm. 201, Fisher-Bennett Hall.
29 *2046*; 9 p.m.; Heyer Sky Lounge, Harrison College House.
30 *Russian Ark*; 5 p.m.; rm. 201, Fisher-Bennett Hall.
Film Culture Program
8 p.m., unless otherwise noted; Film Lounge, Van Pelt Manor. Free w/PennCard.
5 *Water*; 8:30 p.m.
7 *Adaptation*.
12 *A History of Violence*; 8:30 p.m.
14 *A.I. (Artificial Intelligence)*.
19 *Children of Heaven*; 8:30 p.m.
21 *In the Mood for Love*.
26 *The Proposition*; 8:30 p.m.
28 *2046*.

French Film Series
8 p.m.; Class of ’25 Room, Gregory College House.
8 *Beau Travail*.
29 *Les Filles Ne Savent Pas Nager*.
German Film Series
Screenings: 8 p.m.; Class of ’25 Room, Gregory College House.
11 *Das Leben der Anderen*.
15 *Sophie Scholl—Die Letzten Tage*.
International House
With English subtitles: 7 p.m.; \$7, \$5/ members, students, seniors unless otherwise noted. Info.: www.ihousephilly.org.
1 *The Brothers Quay: A Retrospective in 5 Films* followed by Q&A with Stephen & Timothy Quay; *continues November 2*.
7 *The Road to Fondwa*; Haiti. *See Exhibits*.
9 *Premium*.
11 *David Holzman’s Diary* followed by *Portrait of Jason*.
15 Scribe Video Center’s *Community Visions*.
16 *Facing Window (La Finestra Di Fronte)*; Turkey/Italy.
17 *Istanbul Tales (Anlat Istanbul)*; Turkey.
18 *On the Road (Yolda)*; Turkey; 2 p.m. Grizzly followed by *Day of the Animals*; 8 p.m.; \$10.
27 *New Authors of Italian Cinema*; five features and five shorts; free; see website for schedule. *Through December 2*.

Italian Film Series
9 p.m.; Class of ’25 Room, Gregory College House.
13 *Denti*.
27 *Don Camillo*.
South Asian Film Series
6 p.m.; rm. 111, Annenberg School.
7 *Fire*.
14 *Bombay Boys*.
21 *Monsoon Wedding*.
28 9” 11” 01: *September 11*.
Spanish Film Series
7:30 p.m.; Class of ’25 TV Lounge.
14 *Profundo Carmesi*.
28 *Historia Oficial*.

MEETINGS

9 *WPSA Board*; 12:30-1:30 p.m.; Political Science Lounge, Stiteler Hall.
10 *PPSA Board*; noon-1:30 p.m.; Class of ’42 Conference Room, Sweeten Alumni House; RSVP: ppsa@pobox.upenn.edu.
15 *University Council*; 4-6 p.m.; Bodek Lounge, Houston Hall; RSVP: (215) 898-7005.
28 *WXPN Policy Board*; noon; WXPN-FM, 3025 Walnut St.

MUSIC

3 *Simon Shaheen*; violin music from traditional Arabic to western jazz; 8 p.m.; Zellerbach Theatre, Annenberg Center; \$19-\$38 (Penn Presents).

November AT PENN

Wherever these symbols appear, more images or audio/video clips are available on our website, www.upenn.edu/almanac/.

4 *Cecil Taylor*; solo piano; 8 p.m.; International House (I-House).
10 *Chamber Music Concert*; 5 p.m.; Heyer Sky Lounge, Harrison College House (Harrison College House).
16 *Lay All Over It*; free jazz; 8 p.m.; The Rotunda (ARS Nova Workshop).

Music Department
\$5 unless otherwise noted; free w/PennCard. Info.: www.sas.upenn.edu/music.
1 *American Avant Garde Series*; Lonnie Plaxico, bass; 6:30 p.m.; Rose Recital Hall, Fisher-Bennett Hall; free.
4 *Penn Sinfonia*; 8 p.m.; Bodek Lounge, Houston Hall.
18 *University Choir*; 8 p.m.; Irvine Auditorium.
29 *Penn Baroque and Recorder Ensembles*; 8 p.m.; Bodek Lounge, Houston Hall.

World Cafe Live
Performances daily. For a complete listing, see www.worldcafelive.com.

ON STAGE

16 *West Side Story*; 8 p.m.; Harold Prince Theatre, Annenberg Center; \$10, \$7/students. *Also November 17*, 8 p.m. & *November 18*, 2 & 8 p.m. (The Pennsylvania Players).
18 *Theater-in-the-Galleries: Vagabond Acting Troupe*; original short theatre program to complement the new *Amarna* exhibit; multiple performances beginning after 1 p.m.; Lower Egyptian Gallery, Penn Museum; free with admission. *Also November 19*, 25 & 26 (Museum). *See Exhibits*.
Penn Presents
Info./tickets: www.pennpresents.org.
15 *Bayanihan Philippine National Folk Dance Company*; 7:30 p.m.; Irvine Auditorium; \$32-\$44.
16 *Les Grands Ballets Canadiens de Montréal*; 7:30 p.m.; Zellerbach Theatre, Annenberg Center; \$29-\$44. *Also November 17*, 8 p.m.; *November 18*, 2 & 8 p.m.
28 *The National Dance Company of Ireland*; 7:30 p.m.; Zellerbach Theatre, Annenberg Center; \$32-\$44. *Also November 29*, 7:30 p.m.

READINGS/SIGNINGS

29 *Eric Zillmer—Military Psychology, Clinical and Operational Applications*; 4:30 p.m.; International House (I-House). *See Exhibits*.
Kelly Writers House
Events in Arts Café unless otherwise noted. RSVP where noted: wh@writing.upenn.edu. Info.: www.writing.upenn.edu/~wh/.
1 *Lunch Program with Christopher Kennedy Lawford*, actor/writer; 11:30 a.m.; RSVP.
Speakeasy: Poetry, Prose, and Anything Goes!; 8 p.m. *Also November 15*.
2 *An Hour of Dandyism: Lord Breaulove Swells Whimsy—The Affected Provincial’s Companion*; noon; RSVP.
The Jazz Avant-Garde and Jelly Roll Morton; with John Szwed, Yale University; Dave Burrell, pianist/composer; 6 p.m.
Audio Archiving and the Discovery of the Lost John Coltrane/Thelonious Monk Quartet Recordings; with Larry Applebaum, Library of Congress; 6 p.m.
6 *Lunch Program with Jennifer Weiner—The Guy Not Taken*; noon; RSVP.
Alice Notley—Grave of Light: Selected Poems 1970-2005 and Alma, or the Dead Women; 6 p.m.; also live webcast.
7 *Anna McCarthy—Cyanoid Modalities in Screen Performance*; 6 p.m.
8 *Charles Bernstein—Girly Man*; 8 p.m.
9 *Reception for Bill Crandall*, AOL Music; 4:30 p.m.; dining room; RSVP.
11 *Lia Purpura*, poet; 4 p.m.
13 *LIVE at the Writers House with 88.5 WXPN—Plan B*. Press and Joshua Heard Park; 7 p.m.
14 *Journalism Bootcamp*; 4:30 p.m.
16 *Lunch Program: Subduing Demons in America: John Giorno, Buddhism and the Avant-Garde*; with Marcus Boon, York University; noon; RSVP.
Emergency: Noah Eli Gordon—Pictorial Noise and A Fiddle Pulled From the Throat of a Sparrow; Jason Zuzga—FENCE; 6 p.m.
21 *Daniel Heller-Roazen—The Inner Touch: Archaeology of a Sensation*; 6 p.m.
28 *Lunch Program with Michael Sokolove—The Ticket Out: Darryl Strawberry & the Boys of Crenshaw*; 11:30 a.m.; RSVP.
29 *Richard Burgin—Boulevard*; 6 p.m.

Penn Bookstore
Info.: www.upenn.edu/bookstore.
1 *Joyce Carol Oates—After The Wreck, I Picked Myself Up, Spread my Wings and Flew Away*; 7 p.m.
2 *Tim Westergren—Pandora Music Genome Project*; Town Hall Meeting; 7 p.m.
6 *Kermit Roosevelt—The Myth of Judicial Activism*; 7 p.m.
7 *Iva Cipuri—Transform!*; 7 p.m.
8 *Jane Golden, Robin Rice, Natalie Pompilio, David Graham, Jack Ramsdale—More Philadelphia Murals and the Stories They Tell*; 7 p.m.
9 *Jonathan Safran Foer—Extremely Loud and Incredibly Close*; 7 p.m.



The Big Art Show comes to The Rotunda on November 4, 7 p.m.-1 a.m. The all-inclusive multi-media event will feature over 70 local and traveling artists and musicians. \$5 suggested donation (Arts at Penn).

11 *Tonya Evans-Walls—Copyright Companion for Writers & Literary Law Guide for Authors*; 10:30 a.m.
14 *Christine Whelan—Why Smart Men Marry Smart Women*; 8 p.m.
16 *Sam Fink—The Constitution of the United States*; 7 p.m.
29 *Charles Yang—The Infinite Gift: How Children Learn and Unlearn the Languages of the World*; 4 p.m.

SPECIAL EVENTS

1 *Farmers Market*; fresh baked goods, flowers, & local, organic produce; 11 a.m.-2 p.m.; University Square (Business Services). *Every Wednesday through Thanksgiving*.
Wharton Programs for Working Professionals Information Session; 5:30-7 p.m.; rm. F-95, Jon M. Huntsman Hall (WPWP).
Candlelight Vigil: Remembering Victims of Hate; 7:30 p.m.; Ben Franklin Room, Houston Hall (Pan Asian American Community House; LGBT Center).
3 *Wine Tasting at Morris Arboretum*; with Jonathan Newman, PA Liquor Control Board; 6 p.m.; Morris Arboretum; \$75, \$70/members; reservations: (215) 247-5777, ext. 125 or 156 (Arboretum).
Asian Pacific American Heritage Week 2006 Fashion Show; showcasing Asian American fashion designers; 7 p.m.; Hall of Flags, Houston Hall; \$10, \$12/door; tickets: (215) 746-6046 (Pan Asian American Community House).
6 *Blood Drives*; Harnwell College House; *November 8*: Michael Murray Lounge, Sansom Place East; *November 13*: McClelland Hall-North Lounge; *November 14*: Schattner Hall/Lobby, Dental School; *November 30*: Stouffer/Georgy College Houses; info.: (215) 687-8405 (Red Cross).
13 *The World’s Fair*; student group performances, presentations on Penn’s international initiatives and educational opportunities from departments; 11 a.m.-2 p.m.; Bodek Lounge, Houston Hall (OIP).
White House Fellows Program Information Session; Wharton Dean Patrick Harker and other former White House Fellows; 4:30-5:30 p.m.; rm. 250, Jon M. Huntsman Hall (Wharton).

SPORTS

Info./tickets: www.pennathletics.com.
3 *Sprint Football vs. Princeton*; 7 p.m. *Volleyball vs. Brown*; 7 p.m.
4 *Volleyball vs. Yale*; 4 p.m.
11 *Football vs. Harvard*; 1 p.m.
18 (W) *Squash vs. Cornell*; 1 p.m. (M) *Squash vs. Cornell*; 1 p.m. (M) *Basketball vs. Florida Gulf Coast*; 7 p.m.
19 *Wrestling: Keystone Classic*; all day.
21 (W) *Basketball vs. LaSalle*; 5 p.m. (M) *Basketball vs. Drexel*; 8 p.m.
28 (M) *Basketball vs. Monmouth*; 7 p.m.
29 (W) *Basketball vs. Delaware*; 7 p.m.

Almanac
Suite 211 Sansom East, 3600 Chestnut St. Philadelphia, PA 19104-6106
(215) 898-5274 or 5275 FAX (215) 898-9137
Email: almanac@pobox.upenn.edu
URL: www.upenn.edu/almanac

Unless otherwise noted, all events are open to the general public as well as to members of the University. For building locations, call (215) 898-5000 between 9 a.m. and 5 p.m. or see www.facilities.upenn.edu or the University’s website, www.upenn.edu. Listing of a phone number normally means tickets, reservations or registration required.
This November calendar is a pull-out for posting. *Almanac* carries an *Update* with additions, changes and cancellations if received by Monday noon prior to the week of publication. Members of the University may send notices for the *Update* or *December AT PENN* calendar.

1 *Parental Marking of Chromosomes: Is It All About Transcription?*; Carmen Sapienza, Fels Institute for Cancer Research; noon; rm. 252, BRB II/III (CRRWH).

Postphylogenetics: The Tree of Life in the Light of Lateral Gene Transfer; Ford Doolittle, Dalhousie University; noon; auditorium, CRB (Microbiology).

The Inevitable City Scape: Merging Landscape, Architecture and Engineering; Katrin Scholz-Barth, Scholz-Barth Consulting; noon; Carolyn Hoff Lynch Lecture Hall, Cret Wing, Chemistry Labs (Institute for Environmental Studies).

Thinkers of 'This Peninsula': The Introduction and Early Development of Philosophy in al-Andalus; Sarah Stroumsa, Hebrew University; noon; Center for Advanced Judaic Studies, RSVP: allenshe@sas.upenn.edu (Middle East Center).

Protein Dynamic and the Influence of Environment Investigated With Ultrafast Infrared Non-Linear Experiments; Michael Fayer, Stanford University; 12:30 p.m.; Reunion Auditorium, John Morgan Bldg. (Biochemistry and Biophysics).

New Materials Innovation at GE Plastics; Thomas Stanley, GE Plastics; 3:15 p.m.; Wu & Chen Auditorium, Levine Hall (Chemical and Biomolecular Engineering).

Current Advances in Antiretroviral Therapy; Michael Saag, University of Alabama-Birmingham; 4 p.m.; Grossman Auditorium, Wistar Institute (Wistar).

Leadership in the Academy: Leading and Learning; Valarie Swain-Cade McCoullum, VPUL; Anamaria Cobo de Paci, Center for Hispanic Excellence; Lois Chiang, Provost's Office; Joann Mitchell, Vice President of Institutional Affairs; 4 p.m.; Terrace Room, Logan Hall (BGAPSA; LaGAPSA).

North Korea: Containment of Engagement?; C. Kenneth Quinones, Akita International University; 4:30 p.m.; rm. 402, Logan Hall (East Asian Studies).

2 *The Second Belgium: The German Sack of Kalisz (August 1914) and the Russian Anti-Atrocity Campaign*; Laura Englestein, Yale University; 4:30 p.m.; rm. 231, Fisher-Bennett Hall (History).

Neoliberalism and the City; David Harvey, City University of New York; 5 p.m.; rm. 17, Logan Hall (Urban Studies).

The Africana Media Project; Tukufu Zuberi, Center for Africana Studies; Terry Adkins, fine arts; John Jackson, communication; Guthrie Ramsey, music; Gwendolyn DuBois Shaw, history of art; 5:30 p.m.; Amado Recital Room, Irvine Hall (Center for Africana Studies).

Asian Americans in the Media; Kal Penn, star of *Harold and Kumar Go to White Castle*; 7 p.m.; Bodek Lounge, Houston Hall; \$5 (Pan Asian American Community House).

FITNESS/LEARNING

Class of 1923 Arena; admission: weekday \$5.50, weekend \$6.50, \$1 off w/PennCard; ice skate rental \$2.50; public skating: Mon.-Thurs., 1-3 p.m.; Sat. 7:30-9:30 p.m.; Sun. 1-2:30 p.m.; group rates and skating lessons offered; info.: www.upenn.edu/icerink.

Jazzercise; 5:30-6:30 p.m.; Tuesdays & Thursdays; Newman Center; first class free; \$7/class, \$5/students; contact Carolyn Hamilton: (215) 662-3293 (days) or (610) 446-1983 (evenings).

2 *Penn Knitters*; noon-1:30 p.m.; The ARCH. *Also November 16 & 30.*

7 *Rape Aggression Defense Program (RAD)*; hands-on physical defense training for women; Tuesdays through November 28, 5:30-8:30 p.m.; *also November 11 & 18*, 9 a.m.-3 p.m.; free/students, faculty, staff; register: (215) 898-3590; for fall 2006 schedule, see www.publicsafety.upenn.edu/Special/dpsRAD.asp (UPPD).

Christian Association
Info: www.upennca.org/.

3 *Christian Activist Power Lunch*; noon. *Also November 10, 17 & 24.*

7 *Christians in Dialogue: The Divine in the World*; with lunch; noon. *Also November 14 & 28.*

SLANGuage; practice speaking English; 3 p.m. *Also November 14, 21 & 28.*

14 *Queer Christian Fellowship*; fellowship and conversation with dinner; 6 p.m. *Also November 28.*

28 *Spirituality for Over-Achievers: Making it Through the Grind*; buffet dinner with PennCard; 6 p.m.

College of General Studies
Adult non-credit courses.
Register: www.pennnclasses.org.

6 *Supervisory Skills*; 9 a.m.-5 p.m. *Continues November 13*; \$600.

11 *Fantasy Afternoon: In the Company of Giants-Masterpieces of the High Renaissance*; 12:30-5:30 p.m.; \$150.

Learning and Education: HR
Open to faculty and staff. Register: www.hr.upenn.edu/training_coursecatalog/.

2 *Introduction to the Myers-Briggs Type Indicator*; 9 a.m.-noon; \$60.

3 *AMA's Delegation Boot Camp*; 9 a.m.-5 p.m.; \$60.

8 *Star Achievement*; 9 a.m.-4:30 p.m.; \$75.

9 *Tuition Benefit Information Session*; noon-1 p.m.

10 *Words at Work*; 9 a.m.-noon; \$60. *Also November 15 & 17.*

14 *Brown Bag Matinee--Conflict Resolution: A Win-Win Approach*; noon-1 p.m.

16 *Career Focus Brown Bag--Success Interviewing*; noon-1 p.m.

30 *Unlocking the Secrets of the Penn Library*; noon-1:30 p.m.

Morris Arboretum
Register: (215) 247-5777, ext. 125.

1 *Landscaping with Bulbs*; 7-9 p.m.; \$32, \$30/members.

4 *Drawing from Nature for the Reluctant Beginner*; 10 a.m.-noon; \$78, \$70/members. *Continues November 11 & 18.*

Japanese Garden Design Basics; 10 a.m.-noon; \$24, \$22/members.

8 *Creating Beautiful Landscapes Under Mature Trees*; 7-9 p.m.; \$24, \$22/members.

11 *Critter Workshop*; 10 a.m.-1 p.m.; \$42, \$38/members.

14 *Evaluating Trees for Hazards*; 9 a.m.-4 p.m.; \$85.

19 *Floral Turkey Thanksgiving Centerpiece*; 1-3 p.m.; \$42, \$38/members.

PennFit: Department of Recreation
Free to Penn students, faculty & staff. Events at Pottruck Health and Fitness Center, noon-1 p.m. Register: www.upenn.edu/recreation or (215) 898-6100.

3 *Body Composition Measurement*; pre-register.

7 *10 Steps to Freedom From Dieting, Part I; Part II: November 14.*

28 *Benefits of Massage Therapy Related to Stress.*

Quality of Worklife: HR
Open to faculty and staff. Register: www.hr.upenn.edu/training_coursecatalog/.

2 *Handling the Difficult and Angry Customer*; 11:30 a.m.-12:30 p.m.

8 *Winning the Battle with Asthma*; noon-1 p.m.

16 *The Sandwich Generation Survival Guide*; 11:30 a.m.-12:30 p.m.

Technology Training Services
Classes at ISC labs; 9 a.m.-4:30 p.m., unless otherwise noted. Open to faculty, staff & students. Register: www.tts.isc.upenn.edu.

1 *Excel Introduction*; \$190.

2 *Word Introduction*; \$190.

3 *PowerPoint: Beyond the Basics*; \$190.

6 *Dreamweaver 8: Introduction*; \$570. *Continues November 7.*

10 *Visio Intermediate*; \$224.

13 *Word Intermediate*; \$190.

14 *FilemakerPro Intermediate*; \$260.

15 *Outlook 2003 Introduction*; \$190.

16 *Excel Intermediate*; \$190.

17 *Business Objects Introduction*; \$380.

20 *Access Introduction*; \$357. *Continues November 21.*

28 *Windows XP Introduction*; \$190.

29 *Word Advanced*; \$190.

30 *Excel Advanced*; \$190.

The Honorable A. Leon Higginbotham, Jr. Memorial Lecture; Hauwa Ibrahim, attorney; Regina Austin, law; 5:30 p.m.; Gittis Hall, Law School (Center for Africana Studies).

10 *Learning to Bridge the Human-Robot Divide*; Chad Jenkins, Brown University; 11 a.m.; Wu & Chen Auditorium, Levine Hall (GRASP).

Anthrolysin O: Environmental Regulation & Function of Anthrax Toxin; Richard Rest; Drexel University; noon; rm. 209, Johnson Pavilion, HUP (Microbiology).

Networks of Protection in the Early Modern Mediterranean; Molly Greene, Princeton University; 2 p.m.; Lea Library, Van Pelt-Dietrich Library (History).

On the Advantages and Disadvantages of Negativity for Life; Barrett Watten, Wayne State University; 6:30 p.m.; Slought Foundation (Slought).

The World of Trash; John Waters, filmmaker; 7 p.m.; rm. B-1, Meyerson Hall (Fine Arts).

11 *Pre-Columbian Medicine*; Chalón Rodríguez, Pre-Columbian Society of Washington, D.C.; 1:30 p.m.; rm. 345, Penn Museum; free with admission (Museum).

13 *HDAC6 Deacetylation of Tubulin is Necessary for Dynamics of Cellular Adhesions and Cell Polarization During Fibroblast Wound-Healing Motility*; J. Chloe Bulinski, Columbia University; 2 p.m.; Austrian Auditorium, CRB (Pennsylvania Muscle Institute).

Sadie T. Alexander Lecture; Leith Mulligan, City University of New York; 5:30 p.m.; Penn Museum (Center for Africana Studies).

Encounters and Engagements: International Studies in Architecture; Detlef Mertins, architecture; 6:30 p.m.; rm. B-1 Meyerson Hall (Architecture).

The Greatest Asian Century; Kishore Mahbubani, National University of Singapore; 6:30 p.m.; rm. G-06, Jon M. Huntsman Hall (Provost's Global Forum).

15 *Arabic into Hebrew: The Accommodation of Secular Knowledge in Twelfth Century Provençal Judaism*; Gad Freudenthal, Centre National de la Recherche Scientifique; noon; Center for Advanced Judaic Studies; RSVP: allenshe@sas.upenn.edu (Middle East Center).

HIV-Receptor Interactions: Not Just for Entry; Ronald Collman, microbiology; noon; auditorium, CRB (Microbiology).

Unfolded Proteins and Protein Folding by NMR; H. Jane Dyson, Scripps Research Institute; 12:30 p.m.; Reunion Auditorium, John Morgan Bldg. (Biochemistry and Biophysics).

Kelo v. City of New London: Trampling on Private Property Rights or Strong Support for States' Rights: Implications for Farmland Preservation Programs; John Becker, Penn State University; noon;

Carolyn Hoff Lynch Lecture Hall, Cret Wing, Chemistry Labs (Institute for Environmental Studies).

Drosophila Innate Immunity: The Toll Pathway and Beyond; Tony Ip, University of Massachusetts; 4 p.m.; Grossman Auditorium, Wistar Institute (Wistar).

Han China's Double Take on Xiongnu: Questions of Historiography Reconsidered; Nicola Di Cosmo, Princeton University; 4:30 p.m.; rm. 212, Moore Bldg. (East Asian Studies).

Reporting on North Korea; Bradley Martin, Bloomberg News; 4:30 p.m.; rm. 402, Logan Hall (East Asian Studies).

Travel and the Santiago Pilgrimage; Alison Stones, University of Pittsburgh; 5 p.m.; Rainey Auditorium, Penn Museum (Museum).

16 *Virtue and Violence: 'The Good War' in American Memory*; John Bodnar, history; noon; lecture room, McNeil Center (History).

Excavations at Amarna: New Discoveries and Current Perspectives; Barry Kemp, University of Cambridge; 6 p.m.; Penn Museum; RSVP: (215) 898-4890 (Museum).

17 *ED Intervention to Reduce Risky Behavior in Drivers: Preliminary Findings*; Marilyn Sommers, nursing; 9:30 a.m.; Terrace Room, Logan Hall (FICAP).

Collaborative Observatories for Natural Environments; Ken Goldberg, University of California-Berkeley; 11 a.m.; Wu & Chen Auditorium, Levine Hall (GRASP).

The Health Care Safety Net and Crowd-Out of Private Health Insurance; Anthony Lo Sasso, health policy & administration; noon; auditorium, Colonial Penn Center (LDI).

Vibrio Cholera Virulence Regulator-Coordinated Evasion of Host Immunity; Ansel Hsiao, Zhu Lab; noon; rm. 209, Johnson Pavilion, HUP (Microbiology).

20 *Protein Engineering Applications to Viral Fusion, Cell Adhesion, and Site-specific Immobilization*; Eric Boder, chemical and biomolecular engineering, and bioengineering; 3:15 p.m.; rm. 220, Towne Bldg. (Chemical and Biomolecular Engineering).

21 *Pharmaceutical Testing & Evidence Making: An Ethnography of the Globalized Clinical Trial*; Adriana Petryna, anthropology; 4:30 p.m.; rm. 350, Jon M. Huntsman Hall (Center for Bioethics).

27 *Regulation of Cytoskeleton by Protein Arginylation*; Anna Kashina, animal biology; 2 p.m.; Austrian Auditorium, CRB (Pennsylvania Muscle Institute).

28 *Firearm Injury: Public Health, Prevention, and Research*; Rose Cheney, FICAP; 1 p.m.; University Club (FICAP).

29 *Global & Water Sanitation Agenda: Challenges & Opportunities*; Muhammad Chaudhry, United Nations; noon; Carolyn Hoff Lynch Lecture Hall, Cret Wing, Chemistry Labs (Institute for Environmental Studies).

Studies on HIV Entry and Its Inhibition; John Moore, Cornell University; noon; Austrian Auditorium, CRB (Center for AIDS Research).

Testosterone, Puberty & the Evolution of PCOS; John Marshall, University of Virginia; noon; rm. 252, BRB II/III (CRRWH).

Putting the Squeeze on Biology: Biomolecules Under Pressure; Sol Gruner, Cornell University; 12:30 p.m.; Reunion Auditorium, John Morgan Bldg. (Biochemistry and Biophysics).

The Chemistry of Single Walled Carbon Nanotubes: Applications to Biomolecule Detection; Michael Strano, University of Illinois at Urbana-Champaign; 3:15 p.m.; Wu & Chen Auditorium, Levine Hall (Chemical and Biomolecular Engineering).

Emerging Genetics of T-Cell Leukemia/Lymphoma; Thomas Look, Dana Farber Cancer Institute; 4 p.m.; Grossman Auditorium, Wistar Institute (Wistar).

Law and Entrepreneurship Lecture; Pamela Daley, General Electric; 4:30 p.m.; rm. S245A, Law School (Institute for Law and Economics).

30 *Media and the Middle East*; Robin Koerner, WatchingAmerican.com; Richard Schmierer, U.S. Dept. of State; 8:30 a.m.; Penn Museum; \$35; \$25/GIC members; \$10 students (Global Interdependence Center).

Where Science Leads: Caring to Change the World; Shirley Chater, Former U.S. Commissioner—Social Security Administration; Suzanne Gordon, Author/Lecturer; Rosemarie Greco, PA Health Care Reform; Linda Aiken, nursing; 1 p.m.; followed by *The Where Science Leads Campaign—a Vision for Penn Nursing's Future*; Afaf Meleis, nursing; auditorium, School of Nursing (Nursing).

Ex Oriente Scientia? Reconsidering the Ideology of a Chinese Origin of Western Knowledge; Michael Lackner, Universitat Erlangen-Nurnberg; 4:30 p.m.; rm. 286-7, McNeil Bldg. (East Asian Studies).

"If You Can't Protect What You Own, You Don't Own Anything:" Piracy, Privacy and Public Relations in 21st Century Hollywood; Jon Lewis, Oregon State University; 5 p.m.; rm. 231, Fisher-Bennett Hall (Cinema Studies).

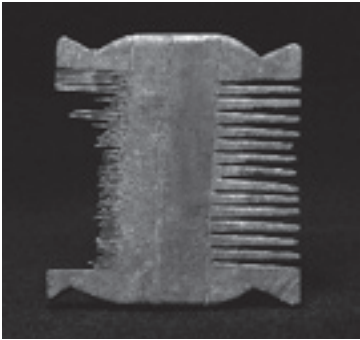
Reconstructing Bronze Age Boats; Gregory Possehl, anthropology; 6 p.m.; \$40, \$30/members; Penn Museum; info.: (215) 898-4890 (Museum).



From the Amarna exhibition: *Statuette of Tutankhamun* (above), provenance unknown, late Dynasty 18, reign of a successor of Akhenaten (1332-1322 BCE), bronze with traces of gold; (at right) *Comb*, Amarna, Dynasty 18, reign of Akhenaten (1353-1336 BCE), wood; at Penn Museum through October, 2007. See www.museum.upenn.edu for more information.



Penn Museum begins its celebration of all things Egyptian at the free opening of its new exhibition, *Amarna, Ancient Egypt's Place in the Sun* on Sunday, *November 12*, noon to 5 p.m. The family-friendly day features Middle Eastern music, dance performances and a belly dance workshop, plus games, children's crafts, films, and curator talks. The *Amarna* exhibit will feature more than 100 ancient artifacts, some never before on display—including statuary of gods, goddesses and royalty, monumental reliefs, golden jewelry as well as personal items from the royal family, and artists' materials from the royal workshops of Amarna.



Vagabond Acting Troupe (above) returns for three weekends of exciting, interactive, family-oriented theater-in-the-galleries at Penn Museum. This original short theater program, designed to complement the new *Amarna* exhibition, runs multiple times throughout the day. *November 18, 19, 25 & 26* beginning at 1 p.m.; Lower Egyptian Gallery; free with Museum admission.



Penn Presents welcomes virtuoso violinist *Simon Shaheen* (below) to the Zellerbach Theatre on *November 3*, 8 p.m. The styles of this virtuoso violinist range from traditional Arabic to western jazz; \$19-\$38. The Philippines' oldest dance company, *Bayanihan Philippine National Folk Dance Company* (right) will entertain audiences with its graceful movements, glorious costumes and fascinating music; *November 15*, 7:30 p.m.; Irvine Auditorium; \$32-\$44. For more information on these and other performances, see www.penn-presents.org.



November AT PENN