

ACADEMIC CALENDAR

- 5 New Student Convocation and Opening Exercises.
6 First Day of Classes.
22 Course Selection Period Ends.

CHILDREN'S ACTIVITIES

- 22 Meet Winnie the Pooh; stories and refreshments; 10:30 a.m.; Penn Bookstore (Bookstore).
Peanut Butter & Jams: World Cafe Live
Shows begin 11:30 a.m.; \$10/adults, \$7/children. Info.: www.worldcafelive.com.
9 Milkshake; original pop-rock songs.
16 Audrarorx; high-energy, original music.
17 Dan Zanes and Friends; spirited rock & roll for kids; 11 a.m. & 2 p.m.; \$20/adults; \$15/children.
23 Putumayo Kids Folk Playground featuring Brady Rymer (playful kid rocker) & Elizabeth Mitchell (home-spun, folk music).
30 Hot Peas 'n Butter; latin/jazz, rhythm & blues, folk & rock.

CONFERENCES

- 13 The Legacy of the Philadelphia Chromosome: From Discovery to Therapy; 9 a.m.-4:30 p.m.; Penn Museum; register: <http://somapps.med.upenn.edu/pathfac/philachromosome/> (Pathology and Laboratory Medicine).
15 The Whether, How, and When of Race in Biomedical Research: Four Perspectives; Tukufu Zuberi, sociology; Theodore Schurr, anthropology; Pamela Sankar, Center for Bioethics; Timothy Rebbeck, Center for Population Health and Health Disparities; 1-5 p.m.; Amado Recital Room, Irvine Auditorium (Center for Bioethics).
19 Herbal Medicine: Perception, Practice and Rational Use; explore issues surrounding the use of herbal medicines and discuss their role as effective or harmful agents in modern drug development; 4-8 p.m.; Morris Arboretum; continues September 20, 9 a.m.-3:30 p.m.; \$70-\$160; register: (215) 247-5777, x156 (Morris Arboretum).
29 The Atlantic World of Print in the Age of Franklin; historians and scholars examine production, circulation and consumption of texts in the early modern Atlantic world; 8:45 a.m.-5 p.m.; Terrace Room, Logan Hall; reception: 6:30 p.m.; McNeil Center; register by September 15 at (215) 898-9251; see www.mceas.org/franklin/ for full schedule (McNeil Center for Early American Studies; SAS).

EXHIBITS

- Admission Donations and Hours
Arthur Ross Gallery, Fisher Fine Arts Library: free; Tues.-Fri., 10 a.m.-5 p.m.; Sat.-Sun., noon-5 p.m.
Charles Addams Gallery, Charles Addams Fine Arts Hall: free; Mon.-Fri., 10 a.m.-5 p.m.
College Hall, first floor: free; Mon.-Fri., 9 a.m.-5 p.m.
Esther Klein Gallery, 3600 Market St.: free; Mon.-Sat., 9 a.m.-5 p.m.
Institute of Contemporary Art (ICA): \$6, \$3/artists, seniors, students over 12; free/members, children 12 & under, w/ PennCard; Sun. 11 a.m.-1 p.m.; Wed.-Fri., noon-8 p.m.; Sat.-Sun., 11 a.m.-5 p.m.
International House; free; for hours call (215) 387-5125.
Kelly Writers House Gallery: free; Mon.-Thurs., 10 a.m.-10:30 p.m.; Fri.,

- 10 a.m.-5 p.m.; Sat., noon-11 p.m.; Sun., 6-11 p.m.
Meyerson Gallery, Meyerson Hall: free; Mon.-Fri., 9 a.m.-5 p.m.
Morris Arboretum: \$10, \$8/seniors, \$5/students & youth 3-18, free w/ PennCard, children under 3; Mon.-Fri., 10 a.m.-4 p.m.; Sat.-Sun., 10 a.m.-5 p.m.
Penn Museum: \$8, \$5/seniors, children 6-17, full-time students w/ID, free/members, w/PennCard, children under 6; Tues.-Sat., 10 a.m.-4:30 p.m.
Slought Foundation, 4017 Walnut St.: free; Wed.-Sat., 1-6 p.m.
Van Pelt-Dietrich Library: free; for hours see: <http://events.library.upenn.edu/cgi-bin/calendar.cgi>.

- Upcoming
8 Exploring the Elements; drawings by South African artist Alan Bell study the effects of the elements on the landscape; International House. Through October 6.
Saving Faces; artist Mark Gilbert's work with patients who had trauma, cancer or illness; reception: 5:30 p.m.; Esther Klein Gallery. Through October 28.
About Nothing; works on paper by John Armleder from 1962-2007; ICA. Through December 17.
Fables; works by artists who have either fabricated personal histories, or reconsidered history through their own fanciful imaginings to break free of the conditions of historic and cultural narrative; ICA. Through December 17.
Fertilizers: Olin/Eisenman; reminiscent of several key elements of the partners' many unbuilt projects, an abstract landscape of diverse forms and displaced ground fill the space; ICA. Through December 17. See Talks.
Ramp Project: Irene Fortuyn; tree branches, cut during the spring and cast in bronze create an abstract pattern on the walls and form spaces where psychological and emotional effects can be loosened; ICA. Through December 17.
23 Primal Secretions: A Günter Brus Retrospective; original photographs and video documentation of the artist's past performances; Slought; reception: 6:30 p.m. Through December 23.
Under European Eyes: Conquistadors and Arts of the New World; selection of artifacts designed to reveal how Europeans perceived the arts of their newly conquered subjects; Penn Museum. Through February 26, 2007.

- Now
Crafting a Modern World: The Architecture and Design of Antonin and Noémi Raymond; drawings, models, photographs, videos, furniture, and more from the Raymonds' forty-year interaction with Japanese culture; Meyerson Galleries. Through September 24.
An Investment in Knowledge: Franklin's Vision for Penn; first floor, College Hall. Through September 30.
Arte Pagina: Works from the Philadelphia Center for the Book; a juried exhibition; Kelly Writers House Art Gallery; reception: September 23, 4 p.m. Through September 30.
Faculty Exhibit: Works on Paper; Charles Addams Gallery; reception: September 7, 5 p.m. Through October 2.
Cultural Imprints; illustrates the environmental forces that have influenced Iceland and Philadelphia; International House. Through October 9.
Fairy Tale Rail II; annual Garden Railway featuring model train lines; Morris Arboretum. Through October 9.
Transforming the Book: New Artists' Books in the University of Pennsylvania Library; Kamin Gallery, Van Pelt-Dietrich Library. Through October 13.
Modern Latin Culture: Annemarie Heinrich, Grande Dame of Argentinian Photography; portraits of artists and stars that epitomize the heyday of radio and the ascent of the movie industry in Argentina; Arthur Ross Gallery. Through October 15.
Connecting Cultures: Kids Across the World; photographs and video featuring images of children, their families & friends; Merle Smith Gallery, Penn Museum. Through November 26.
Gulliver's Reading: Jonathan Swift's Library and Reading; Rosenwald Gallery, Van Pelt-Dietrich Library. Through December 15.
Trouble in Paradise: The Art of Polynesian Warfare; considers the functions of war clubs and how their decorative

New ICA Exhibits: (top) Fertilizers: Olin/Eisenman. Olin and Eisenman have developed a unique approach to site development where neither the building nor the surrounding environment is given priority. The environmental installation will include several key elements of the partners' many unbuilt projects, an abstract landscape of diverse forms and displaced ground. (bottom) Ramp Project: Irene Fortuyn: The installation will involve tree branches, cut during the spring and cast in bronze. Natural branching in the tree limbs will create an abstract pattern on the walls of the ramp, which will also be colored and patterned with fireplace ashes. Two of four new exhibits at the ICA through December 17.

- tive elements connect to other visual traditions of the cultures that produced them; Dietrich Gallery, Penn Museum. Through December 31.
Coming to the Small Screen: Ormandy & Television; Eugene Ormandy Gallery, Van Pelt-Dietrich Library. Ongoing.
meta Metasequoia; see the world from among a canopy of redwood limbs; Morris Arboretum. Ongoing.
A Wonderful Life: A Daughter's Tribute to a Family of Educators; Joan Myerson Shrager's digital art; Student Lounge, GSE. Ongoing.
Ongoing at the Penn Museum
Worlds Intertwined: Etruscans, Greeks and Romans; Canaan & Ancient Israel; Living in Balance: The Universe of the Hopi, Zuni, Navajo and Apache; Mesoamerica; The Egyptian Mummy; Secrets & Science; Raven's Journey: The World of Alaska's Native People; Buddhism: History & Diversity of a Great Tradition; Africa: The Cradle of Humankind; Polynesia: 'ahu'ula + lei niho palaoa.
Penn Museum Tours
Meet at Trescher Main Entrance; 1:30 p.m., unless otherwise noted; free with admission donation. Info.: www.museum.upenn.edu.
16 Egypt of the Pharaohs.
17 Heroic Myths in Ancient Greece.
23 China: Bronze, Jade, and More.
24 Highlights of the Collection.
30 Body Adornment.
ICA Programs/Events
Info.: www.icaphila.org.
8 Fall Exhibition Opening Reception; 6 p.m. See Upcoming.
14 Gonzales-Torres: America, Then and Now; Nancy Spector, Guggenheim Museum; 5:30 p.m.
20 Whenever Wednesday: Peter Eisenman and Laurie Olin; 6:30 p.m.

FILMS

- International House
Screenings w/English subtitles. Tickets: \$7, \$5/members, students, seniors unless otherwise noted. Info.: www.ihousephilly.org.
8 Valerie and Her Week of Wonders; Czech; 8 p.m.; \$15, \$13/students, \$12/members. See Music.
20 The Camden 28; director Anthony Giacchino in person; 7 p.m.; \$10; \$8/members, students & seniors.
22 The 9th Annual Manhattan Short Film Festival; 7 p.m.
23 Night of the Creeps followed by The Monster Squad; 8 p.m.; \$10.

MEETINGS

- 14 WPSA Board; 12:30-1:30 p.m.; location: TBA; info.: (215) 898-6993.
Trustees Executive Committee Stated Meeting; 2:30 p.m.; Bodek Lounge, Houston Hall; rsvp: (215) 898-0414.
15 PPSA Board; noon-1:30 p.m.; Class of '42 Conference Room, Sweeten Alumni House; rsvp: ppsas@pobox.upenn.edu.
20 University Council; 4-5:30 p.m.; Bodek Lounge, Houston Hall; rsvp: (215) 898-7005.
27 WXPN Policy Board; noon; 3025 Walnut St.

MUSIC

- 16 Orchestra 2001; music of Gyorgy Ligety, George Rochberg and Leonard Bernstein; 8 p.m.; Harold Prince Theatre, Annenberg Center; \$30; info.: www.pennpresents.org (Penn Presents).
International House
Info.: www.ihousephilly.org.
8 The Valerie Project; local underground musicians pay tribute to the film Valerie and Her Week of Wonders; 8 p.m.; \$15, \$13/students, \$12/members. See Films.
9 One Dream; mask and music adventure featuring sitar, guitar, sarod, tabla, trombone and drums; 5 p.m. & 8 p.m.; \$15, \$13/students, \$12/members. Also September 10, 3 p.m.
21 Dengue Fever with Extra Golden; Los Angeles sextet is an eclectic mix of American and International styles; 8 p.m.; \$12, \$10/members & students.
University Square
Performances every Thursday, 5-7 p.m.; 36th St. between Sansom & Walnut.

- World Cafe Live
Performances daily. For a complete listing, see www.worldcafelive.com.

READINGS/SIGNINGS

- 18 David Quammen—The Reluctant Mr. Darwin: An Intimate Portrait of Charles Darwin and the Making of His Theory of Evolution; 7 p.m.; Wistar Institute; register: wyce@wistar.org (Wistar).
Kelly Writers House
Events in the Arts Café unless otherwise noted. Info.: www.writing.upenn.edu/~wh/.
11 Words That Comfort: How Terrorism and 9/11 Affected the NYC Lower East Side Poetry Community; Cristin O'Keefe Aptowicz, writer; 5:30 p.m.
13 Lunch Program: Greg Manning; former DP executive editor; noon; rsvp: wh@writing.upenn.edu.
14 Reading and Conversation: Jennifer Egan, fiction writer; 5:30 p.m.
20 Speakeasy: Poetry, Prose, Anything Goes!; 7 p.m.; garden.
26 The Craft of Brokeback Mountain; D.A. Miller, University of California-Berkeley; 6 p.m.
28 John Coltrane and Impulse Records; Ashley Kahn, author; Carl Grubbs, saxophonist; 6 p.m.

September AT PENN

Whenever there is more than meets the eye, see our website, www.upenn.edu/almanac/.



Photo courtesy Halpein-Rogath Curatorial Seminar

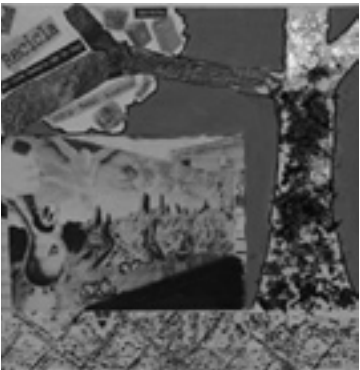


Photo courtesy of International House

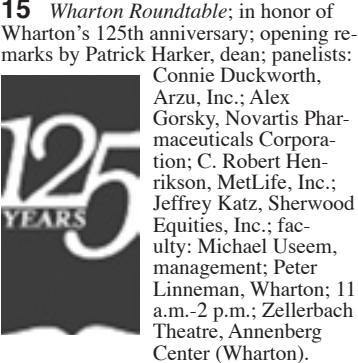


Cultural Imprints illustrates the environmental forces that have influenced Iceland and Philadelphia and defines what elements in Philadelphia's landscape have left an indelible 'imprint' on our city's cultural identity. On display at International House through October 9.

- Penn Bookstore
Info.: www.upenn.edu/bookstore.
18 Alvin Felzenberg—Governor Tom Kean; 7 p.m.
19 Steven Freeman—Was the 2004 Presidential Election Stolen?; 5 p.m.
21 Ian Lustick—Trapped in the War on Terror; 5:30 p.m.
25 James McGreevey—The Confession; 2 p.m.
27 Joe Mack—1968 and I'm Hitchhiking Through Europe; 7 p.m.
28 Steve Stern—Battling for Hearts and Minds: Memory Struggles in Pinochet's Chile, 1973-1988; 3:30 p.m.

SPECIAL EVENTS

- 6 Farmers Market; fresh baked goods, flowers, and local, organic produce; 11 a.m.-2 p.m.; University Square (Business Services). Every Wednesday through Thanksgiving.
Admissions Seminars for Penn Faculty/Staff Families; 5:15 p.m.; rm. 200, College Hall; rsvp: (215) 898-2886. Also September 7, 5:15 p.m. (Admissions).
7 Faculty/Staff Blood Drive; 9 a.m.-3 p.m.; Hall of Flags, Houston Hall; other drives: Remembrance Drive, September 11, 10 a.m.-4 p.m.; Hall of Flags, Houston Hall; September 18, 9 a.m.-3 p.m.; Nursing Education Bldg.; September 27, 10 a.m.-4 p.m.; Dunlop Lobby, Stemmler Hall; info.: www.penn.givesblood.org (American Red Cross).
Greenfield Intercultural Center Open House; multicultural experience of music, food and networking; 6 p.m.; Greenfield Intercultural Center (GIC).
14 No Place Like Penn; outdoor concerts and other welcome back events for students. Free with PennCard unless otherwise noted. Info.: (215) 898-6533 or www.specevents.net. Through September 16 (Student Life; SPEC).
Christian Association Open House; meet the staff, learn about programs and services; 8 p.m.; Christian Association House (CA).
15 Wharton Roundtable; in honor of Wharton's 125th anniversary; opening remarks by Patrick Harker, dean; panelists: Connie Duckworth, Arzu, Inc.; Alex Gorsky, Novartis Pharmaceuticals Corporation; C. Robert Henrikson, MetLife, Inc.; Jeffrey Katz, Sherwood Equities, Inc.; faculty: Michael Useem, management; Peter Linneman, Wharton; 11 a.m.-2 p.m.; Zellerbach Theatre, Annenberg Center (Wharton).



- 22 Fall Potluck; make new friends as you share your favorite native food dish; sign up by September 20; 5:30 p.m.; International House (I-House).
25 The Conversation Partners Program Reception; matches international students learning English at the English Language Programs with students of foreign languages; 5 p.m.; Hall of Flags, Houston Hall; sign up by September 15; (215) 898-6009 (ELP).

- 28 PennRec Health Fair; 11 a.m.-2 p.m.; Pottruck Center (Recreation).
State of the School Address and Reception; Afaf Meleis, dean of the School of Nursing; 3 p.m.; Roy Auditorium, Nursing Education Bldg. (Nursing).
30 Penn Family Day; annual event for Penn faculty and staff and their family and friends; Penn Family Tailgate Party, 11 a.m.-12:30 p.m.; Football Game, 1 p.m.; Penn Museum, 1-3 p.m.; Penn Women's Volleyball Game, 7 p.m.; Class of 1923 Ice Rink; 7:30-9:30 p.m.; tickets required for tailgate party and football game; info.: (215) 898-1012 or www.hr.upenn.edu/quality/staffrecognition.asp (HR).

SPORTS

- Info./tickets: www.pennathletics.com.
6 (W) Field Hockey vs. St. Joseph's; 7:15 p.m.
8 (W) Soccer vs. Hofstra; 7:30 p.m.
9 (W) Field Hockey vs. Harvard; noon.
Sprint Football Alumni Game; 2 p.m.
10 (W) Soccer vs. Richmond; 2:30 p.m.
15 (M) Soccer vs. St. Joseph's; 7:30 p.m.
17 (M) Soccer vs. Duquesne; 2:30 p.m.
22 (W) Tennis Invitational; all day. Through September 24.
23 Football vs. Villanova; 7 p.m. (M) Soccer vs. Harvard; 7:30 p.m. Volleyball vs. Binghamton; 7:30 p.m.
24 Volleyball vs. Quinnipiac; 12:30 p.m.
(W) Soccer vs. Harvard; 1 p.m. Volleyball vs. Fairleigh Dickinson; 5:30 p.m.
27 Volleyball vs. Villanova; 5 p.m.
30 Football vs. Dartmouth; 1 p.m. Volleyball vs. Princeton; 7 p.m.

Welcome Back!

Almanac
Suite 211 Nichols House, 3600 Chestnut St. Philadelphia, PA 19104-6106
(215) 898-5274 or 5275 FAX (215) 898-9137
Email: almanac@pobox.upenn.edu
URL: www.upenn.edu/almanac/

Unless otherwise noted all events are open to the general public as well as to members of the University. For building locations, call (215) 898-5000 between 9 a.m. and 5 p.m. or see www.facilities.upenn.edu. Listing of a phone number normally means tickets, reservations or registration required.

This September calendar is a pull-out for posting. Almanac carries an Update with additions, changes and cancellations if received by Monday noon prior to the week of publication. Members of the University may send notices for the Update or October AT PENN calendar.

Photos courtesy of ICA

