

# UNIVERSITY of PENNSYLVANIA *Almanac*

Tuesday,  
February 11, 2003  
Volume 49 Number 21  
[www.upenn.edu/almanac/](http://www.upenn.edu/almanac/)

## Chinua Achebe at Irvine: Celebration of Black Literature

Chinua Achebe, author of *Things Fall Apart*, the 2002 Penn Reading Project book, will speak on the *Celebration of Black Literature* at Irvine Auditorium, on Friday, February 14, at 4 p.m.

The Office of the President, Office of the Provost, the Center for Africana Studies in SAS, and Art Sanctuary will present acclaimed Nigerian author Chinua Achebe, perhaps best known for his widely read novels *Things Fall Apart*, *Arrow of God* and *Anthills of the Savannah*.

Chinua Achebe, the fifth of his parents' six children, was raised in a Christian evangelical family in the large village of Ogidi, one of the first centers of Anglican missionary work in Igboland in Eastern Nigeria.

In 1958, *Things Fall Apart* was published and was hailed as a revealing portrait of pre-colonial African culture. The book also raises the broader topic of an older culture giving way to modernity. More than two millions copies have been sold in the United States since its publication.

Mr. Achebe draws material for his novels from both traditional oral literature and from a rapidly changing society, heavily influenced by

the West. He rejects the European notion that art should be accountable to no one and has embraced the idea at the heart of the African oral tradition that myths and stories were told for a human purpose.

Mr. Achebe has written short stories, poems, novels and essays about Nigeria. His poetry volume, *Christmas in Biafra*, was the joint winner of the British Commonwealth Poetry Prize in 1972. He has also received 28 honorary doctorates from colleges and universities in Canada, the United Kingdom, and the United States. He is the Charles Stevens Professor of Languages and Literature at Bard College, in New York.



Chinua Achebe

## SAS Dean's Forum: A Celebration of Intellectual Excellence

Each year since 1984, the School of Arts and Sciences Dean's Forum has presented leading intellectual figures who exemplify the liberal arts tradition. Dean Samuel H. Preston has announced that this year's Forum will feature author David McCullough as he discusses the *Qualities of Leadership* on Tuesday, February 18. The Forum takes place at 4:30 p.m., in Zellerbach Theatre, Annenberg Center.



David McCullough

Mr. McCullough is a two-time winner of the prestigious Francis Parkman Prize, and has been honored by the National Book Foundation Distinguished Contribution to American Letters Award, the National Humanities Medal, the St. Louis Literary Award, the Carl Sandburg Award, and the New York Public Library's Literary Lion Award. Mr. McCullough is the author of *The Johnstown Flood*, *The Great Bridge*, *The Path between the Seas*, *Brave Companions*, *Mornings on Horseback*, and *Truman*.

Mr. McCullough's latest biography, *John Adams*, hit the *New York Times* bestsellers list at number one and continues to entice readers with the life story of one of America's greatest-but almost forgotten—heroes: John Adams.

The SAS Dean's Forum has brought to Penn's campus leading intellectual figures who exemplify the liberal arts tradition. Previous Dean's Forum speakers include: Craig Venter, Tom

Wolfe, John Updike, Maxine Hong Kingston, Garry Wills, Floyd E. Bloom, Jonathan Miller, Donald C. Johanson, Arthur Schlesinger, Philip Roth, Toni Morrison, Yevgeny Yevtushenko, Governors Pierre S. duPont of Delaware and Gerald Baliles of Virginia, Gerald Edelman, Baruch Blumberg, James Watson, Susan Sontag, and Arthur Miller.

During the Dean's Forum, several undergraduate and graduate students are honored as Dean's Scholars in recognition of their outstanding academic performance and intellectual promise.

The Dean's Forum is free and open to the entire University community and the public.

For more information and to RSVP call (215) 898-5262 or e-mail [tamburri@sas.upenn.edu](mailto:tamburri@sas.upenn.edu).

## Diverse Perspectives at Penn

PPSA and WPSA celebrate Black History Month with *Diverse Perspectives: Black Staff and Faculty at Penn* on February 25, at noon in the Hall of Flags, Houston Hall. Panelists include: Jeanne Arnold, director, African-American Resource Center, Tom Henry, manager, ULAR Animal Husbandry; Dr. Bennett Johnson, HUP senior medical director & associate dean, Minority Affairs and Lee Nunery, Vice President, Business Services.

The event will be moderated by Valerie Hayes, director, Affirmative Action & Equal Opportunity Programs.

For more information, contact PPSA Chair Anne Mickle, [mickle@pobox.upenn.edu](mailto:mickle@pobox.upenn.edu) or WPSA Chair Omar Mitchell, [henry23@mail.med.upenn.edu](mailto:henry23@mail.med.upenn.edu).

## Dean of Dental Medicine: Marjorie Jeffcoat

Dr. Marjorie K. Jeffcoat, award-winning dental researcher, professor and administrator at the University of Alabama School of Dentistry, has been named dean of the School of Dental Medicine, President Judith Rodin announced. Dr. Jeffcoat will assume her new role this summer.

"We are delighted that a researcher and academic of Dr. Jeffcoat's caliber will be bringing her considerable talents to Penn's dental school," Dr. Rodin said. "Our faculty are in the midst of exciting, cutting-edge research and innovative curriculum development, and Penn's community oral health programs are second to none. We believe Dr. Jeffcoat's background and experience will enable her to build on the school's outstanding base and carry it forward."

A periodontist, Dr. Jeffcoat is a graduate of the Harvard School of Dental Medicine, where she also studied as a research fellow in periodontology and a Medical Foundation fellow. She earned her undergraduate degree at MIT.

Most recently at Alabama, Dr. Jeffcoat has served as assistant dean of research and professor and chair of the department of periodontics. She has also been a professor of biomedical engineering, held the James Rosen Endowed Chair of Dental Research and served as interim chair for the department of oral biology. She has been course master for senior periodontics and clinical periodontics and a member of more than a dozen academic committees, boards and task forces in addition to the university's faculty practice.

Previously, she taught periodontology for 10 years at Harvard, where she also served on a number of clinical and academic committees.

"Dr. Jeffcoat's reputation as a clinical researcher and her leadership at the University of Alabama-Birmingham put her at the very forefront of dental medicine today," said Provost Robert Barchi.

"Her strong credentials and her vision for the future of dental medicine and dental education make her an ideal candidate to lead Penn's

(continued on page 2)

## IN THIS ISSUE

- 2 Trustees Meetings; SEC Actions
- Speaking Out: A Comment on the Fish
- 3 Grants and Fellowships
- 4 Honors & Other Things
- 5 Research Foundation Awards
- 6 February Volunteer Opportunities; Penn Visa
- 7 Update; CrimeStats; Classifieds
- 8 Research Roundup

The following statement is published in accordance with the Senate Rules. Among other purposes, the publication of SEC Actions is intended to stimulate discussion among the constituencies and their representatives. Please communicate your comments to Senate Chair Mitchell Marcus, or Kristine Kelly, Box 12 College Hall/6303, (215) 898-6943 or [kellyke@pobox.upenn.edu](mailto:kellyke@pobox.upenn.edu).

## Actions Taken by the Senate Executive Committee

Wednesday, February 5, 2003

**1. Chair's Report.** Senate Chair Mitch Marcus recommended that the election of the Faculty Senate Committee on Committees be conducted via e-mail, given the late date. SEC approved this recommendation.

Professor Marcus then recommended to SEC that it sponsor a small number of sessions to inform the Faculty Senate membership on issues surrounding the upcoming vote on graduate student unionization, stressing the outcome of this vote will affect the University for years to come, and that it is very important that the faculty strongly encourage all eligible students to vote. After much discussion, SEC endorsed this recommendation.

**2. Past Chair's Report on Academic Planning and Budget Committee and Capital Council.** Past Chair David Hackney reported that both Academic Planning & Budget and Capital Council have continued to meet. He stated that although both the work and the agenda of these two committees is now confidential, the SEC agenda continues to include many of the key items that are coming before these committees.

**3. Election of Chair, Senate Nominating Committee.** SEC was informed that its slate of nominees for the Senate Nominating Committee was circulated to the Senate Membership in *Almanac* on January 21, 2003. Because no additional nominations by petition were received by the February 4, 2003 deadline, the Executive Committee's slate is declared elected according to the

Senate Rules, and will be announced in a forthcoming *Almanac*. Professor Peter Kuriloff was elected chair of the committee.

**4. State of the Health System and School of Medicine.** Dr. Arthur Rubenstein, Dean, School of Medicine and EVP, University of Pennsylvania for the Health System, briefed SEC on Penn Medicine's ongoing strategic planning initiative. In response to questions about the financial state of the Health System and its impact upon Penn as a whole, Dr. Rubenstein emphasized that the Health System continues to run in the black, for the third consecutive year.

**5. Indirect Cost Recovery Follow-up.** In a follow up discussion to SEC's request that the Indirect Cost Recovery (ICR) study presented to SEC last month be published For Comment in *Almanac*, Provost Robert Barchi argued that such action would be inappropriate, given that no written version of this study exists, and that the recommendations of this study are largely administrative. He volunteered his willingness to present a summary of the two ICR studies and the resulting recommendations to the faculties of the various schools, and briefed SEC on the preliminary version of this presentation. Feedback to the presentation was quite positive. In further discussion, Provost Barchi agreed to publish in *Almanac* an announcement to the faculty that these briefings will be held.

**6. Graduate Student Unionization.** Deputy Provost Peter Conn briefly answered a variety of questions from SEC members about the graduate student unionization vote to be held February 26 and 27.

**7. Gender Equity** Because of the late hour, the discussion planned for this meeting of further actions that the faculty can take to improve faculty gender equity was delayed until next month.

**8. New Business.** There was no new business.

## Speaking Out

### A Comment on the Fish

The University and the pro-union graduate students differ on various matters, but there is one fundamental disagreement. This becomes clear in a recent flyer posted by GET-UP, in which a big fish with an open mouth initially chases scattered little fish, but then gets pursued by an organized school of open-mouthed little fish. If they remain divided, the flyer shows us, graduate students eligible for the union will be eaten by the big fish of a university. Unionized, however, that subset of graduate students will turn the tables on the big fish and threaten to eat it instead.

What is a big fish? And is the University one?

The University is clearly big in various ways. But the big fish in the GET-UP flyer is more than just big. It is also trying to eat the little fish. This signifies not only size and power, but also hunger and a willingness to use others to satisfy itself. If this characterization does in fact apply to the University, then graduate students eligible for the union face a powerful, hungry institution and they might be justified in defending themselves.

The University presents an alternative view of its nature, as a non-profit organization devoted to research, mentoring and teaching. The University must generate and spend revenue for this research, mentoring and teaching, but money is simply a means to a non-financial end. The big fish eats (a strictly vegetarian diet, I'm sure), but only so that it can take little fish under its fins and help them become the next generation of researchers and educators.

I, for one, agree with the University's claim. My faculty and administrative colleagues could be earning more money in a profession concerned with profit, but (whatever other neuro-

ses we admittedly have) we choose to devote ourselves to research, mentoring and teaching. Furthermore, graduate students themselves, whatever they feel about the union, have also chosen this career path because of a commitment to something other than money.

That said, the pro-union graduate students are not completely mistaken in seeing the University as a big fish. The University struggles with tensions between the discourses and practices of financial gain and those of scholarly inquiry. Scholarly institutions have always been hybrid, in that they have always had to garner resources sufficient to support their scholarship. But over the last century discourses and practices of financial gain have increasingly penetrated areas of the University that used to be merely scholarly.

Ironically, the unionization drive may push the University away from being the sort of institution they want and toward the sort of institution the pro-union students fear. If a subset of graduate students does unionize, the University will be forced to adopt an adversarial, employer-employee relationship toward them. And thus the discourses and practices of financial gain will penetrate even further into our scholarly lives.

I would ask concerned graduate students to join in discussions and actions aimed at protecting the scholarly core of the University, instead of pushing us further toward profit-centered thought and action. A more collaborative discussion of graduate students' legitimate concerns would be the preferable alternative.

Let's all stop eating fish and find another metaphor.

—Stanton Wortham, associate professor,  
Chair, Educational Leadership Division,  
Graduate School of Education

*Speaking Out welcomes reader contributions. Short, timely letters on University issues will be accepted by Thursday at noon for the following Tuesday's issue, subject to right-of-reply guidelines. Advance notice of intention to submit is appreciated. —Eds.*

## Trustees Meetings

Meetings of the Penn Trustees will be held as follows:

Thursday, February 20

10-11:15 a.m., Facilities and Campus Planning Committee

1:30-2:20 p.m., Neighborhood Initiatives Committee

1:30-3 p.m., Student Life Committee

3:15-4:45 p.m., Academic Policy Committee; Budget and Finance Committee; External Affairs Committee

Friday, February 21

11 a.m.-noon, Stated Meeting of the Trustees.

All meetings will be held at the Inn at Penn, 3600 Sansom Street.

## Dental Dean (continued from page 1)

dental school forward as it continues to enhance and develop its leadership in research and education," Dr. Barchi said.

Dr. Jeffcoat is a past president of both the American Association for Dental Research and the International Association for Dental Research and currently serves on the National Institutes of Health-NIDCR Advisory Committee for Research on Women's Health. She has served on the editorial boards of a variety of professional research journals for more than 20 years, including her current position as editor-in-chief of the *Journal of The American Dental Association*.

Her professional honors include the Clinical Research Award and the Gies Award, both from the American Academy of Periodontology, and the President's Achievement Award from the University of Alabama-Birmingham, in addition to more than a dozen others.

Established in 1878, Penn's School of Dental Medicine has a history of forging precedents in dental education, research and patient care and is ranked consistently among the top five dental schools in the country. The school is among the top dental schools in the nation for NIH funding received, and globally, it is one of only 37 World Health Organization Collaborating Centers on oral health around the world.



## Summer Research Support for Junior Faculty

The Trustees' Council of Penn Women offers three \$3,000 summer research stipends to female faculty, or faculty members whose research is centrally concerned with the role of women in society, science, or arts and letters.\* These awards are given to assist in the promotion of standing faculty to the permanent rank of Associate Professor. Those who have previously applied and did not receive an award are encouraged to apply again.

If you are interested in applying for the stipend, please submit a 2-page summary of the research you wish to undertake, an explanation of how the stipend will facilitate the research, a curriculum vitae, and the name of a University reference. In your application please describe how you will use the award and why it would be particularly useful to you at this time. The summary should be sent to:

Summer Research Award,  
The Alice Paul Center for Research on Women and Gender  
411 Logan Hall, 249 S. 36th Street  
Philadelphia, PA 19104-6304

no later than Friday, March 7, 2003.

Research proposals will be reviewed, and the stipend awarded, through a peer review process. It is expected that the research, or a significant subset thereof, will be concluded during the summer of 2003, and a written report will be submitted to the review panel and to the Trustees' Council. Any subsequent publication of the research results should acknowledge the support of the Council.

\* *Note:* The amount of the award varies according to whether the recipient chooses to receive it as salary or to use it for research expenses.

## Alavi-Dabiri Postdoctoral Fellowship Award in Mental Retardation and Developmental Disabilities

The Mental Retardation and Developmental Disability Research Center announces a call for proposals to provide supplemental support of postdoctoral fellows pursuing careers in fields related to mental retardation and developmental disabilities. The Alavi-Dabiri Fellowship Award was developed by Drs. Abass and Jane Alavi in 1997. The Alavis' have provided an endowment, the income of which will provide for the award. This year the award will be approximately \$6,500. The grant period is July 1, 2003 to June 30, 2004. Information on the center and this award can be accessed through [stokes.chop.edu/mrddrc/mrddrc.html](http://stokes.chop.edu/mrddrc/mrddrc.html).

*Interested candidates should submit:*

1. A preliminary one page application which includes an abstract (250 words) and specific aims of the project.
2. A statement of the project's relevance to mental retardation and developmental disabilities.
3. A letter of support from the applicant's preceptor that will speak to the qualifications of the

candidate and provide assurance of funding for the remainder of the fellowship position.

4. A NIH biographical sketch or CV.

This preliminary application (format attached, send 8 copies) is due March 5, 2003 in the office of John Simpkins, 3615 Civic Center Boulevard, Abramson Research Building, Room 502, Philadelphia, PA 19104-4318.

Applicants who meet the eligibility criteria and whose work is judged to be relevant to the mission of the Center will be invited to submit a formal application (about 5 pages and instructions will be provided).

Notification of the results of the preliminary application will be given by March 14, 2003. The formal application will be due by April 4, 2003. Decisions will be announced by May 1, 2003 for a start date of July 1, 2003.

For more information, contact John Simpkins, (215) 590-3728 or [Simpkinsj@email.chop.edu](mailto:Simpkinsj@email.chop.edu).

— Marc Yudkoff, Director, Mental Retardation and Developmental Disability Research Center

## New Investigator Awards

The Mental Retardation and Developmental Disability Research Center announces the availability of new investigator start-up funds for junior faculty members performing clinical or basic science research in the areas of brain development and function in childhood. The grants are for up to \$20,000 each for one year with the possibility of renewal for a second year. Funds can be used only for technical support and supplies. The grant period is July 1, 2003 to June 30, 2004. For information on the center and the award, see [stokes.chop.edu/mrddrc/mrddrc.html](http://stokes.chop.edu/mrddrc/mrddrc.html).

*Eligibility requirements:*

1. New investigators must have a faculty appointment at the Assistant Professor level and must have been on the faculty for no longer than four years prior to the start of funding.
2. Applicants who hold R01 grants are ineligible, while those who hold CIDA or other transitional awards are eligible.
3. Salary support from alternate sources must be confirmed by a letter of support from the applicant's division chief or department chairperson.

*Interested candidates should submit:*

1. A preliminary one page application which includes an abstract (250 words).
2. A statement of the project's relevance to mental retardation and developmental disabilities.
3. A statement of which core facilities within the Mental Retardation and Developmental Disabilities Research Center would be utilized.
4. A NIH biographical sketch or CV.

This preliminary application (format attached, send 8 copies) is due March 5, 2003 in the office of John Simpkins, 3615 Civic Center Boulevard, Abramson Research Building, Room 502, Philadelphia, PA 19104-4318.

Applicants who meet the eligibility criteria and whose work is judged to be relevant to the mission of the Center will be invited to submit a formal application (about 5 pages and instructions will be provided).

Notification of the results of the preliminary application will be given by March 14, 2003. The formal application will be due by April 4, 2003. Decisions will be announced by May 1, 2003 for a start date of July 1, 2003.

For more information, contact John Simpkins, (215) 590-3728 or [Simpkinsj@email.chop.edu](mailto:Simpkinsj@email.chop.edu).

— Marc Yudkoff, Director, Mental Retardation and Developmental Disability Research Center

## Molecular Studies in Digestive and Liver Disease: Grant Program

We are pleased to announce that the Center for Molecular Studies in Digestive and Liver Disease is accepting applications to its 2003 Pilot and Feasibility Grant Program. Submissions should be related to the focus of the Center, which encompasses molecular studies of the biology and disease of the alimentary tract, pancreas, and liver. Relevant investigations include those in developmental biology, nutrition, regulation of gene expression, growth, differentiation and carcinogenesis, the biology of stem cells, molecular genetics, gene therapy, and immunology, including growth factors and cytokines. An External Advisory Committee will review the applications and select projects for funding. Friday, March 7, 2003 is the closing date for submissions.

Contact me at [anil2@mail.med.upenn.edu](mailto:anil2@mail.med.upenn.edu) if you have questions about the submission process.

— Dr. Anil K. Rustgi, Director,  
Center for Molecular Studies in  
Digestive and Liver Disease

### Pilot and Feasibility Grant Program

#### *Purpose and Research Focus*

The purpose of the Center is to unite investigators with interests in digestive and liver physiology and disease and to stimulate others in the biomedical community to enter this area of research. One of the most important aspects of this effort is the funding of Pilot/Feasibility Projects.

The Pilot/Feasibility Project should be related to the focus of the Center, which encompasses molecular studies on the biology or disease of the alimentary tract, pancreas, and liver. Relevant investigations include those in developmental biology, nutrition, regulation of gene expression, growth, differentiation and carcinogenesis, the biology of stem cells, molecular genetics, gene therapy, and immunology, including growth factors and cytokines.

#### *Eligibility*

- All faculty members of the University scientific community who meet the eligibility requirements below are invited to submit proposals. Applicants must be U.S. citizens or have permanent visas. New investigators who have never held extramural support (R29, R01, P01).
- Established investigators in other areas of biomedical research who wish to apply their expertise to a problem in digestive and liver disease.
- Established digestive and liver investigators who wish to study an area that represents a significant departure from currently funded work.
- Pilot project awardees are eligible for two years of funding; renewals are evaluated competitively.

\* For the application, go to: [www.uphs.upenn.edu/moleculr/pilotprg.htm](http://www.uphs.upenn.edu/moleculr/pilotprg.htm).

# Honors & Other Things

## Benjamin Franklin Medal: Dr. Hochstrasser and Dr. Davis

Two Penn researchers have been selected as 2003 recipients of the Benjamin Franklin Medal, one of the world's oldest science and technology awards. The laureates will be honored April 24 at an award ceremony at the Franklin Institute.

*Dr. Robin M. Hochstrasser*, professor of chemistry, and *Dr. Raymond Davis Jr.*, research professor of physics, are among 10 American scientists recognized with Benjamin Franklin Medals this year for their distinguished achievements in aviation, chemistry, civil engineering, computers and cognitive science, earth sciences, electrical engineering, life sciences and physics.



Robin Hochstrasser

"These exceptional scientists are taking up the torch of a 178-year-old legacy of extraordinary achievement in science and technology," said Dennis M. Wint, president and CEO of the Franklin Institute. "Each of our laureates has made a far-reaching contribution to our understanding of the universe and to improving the quality of our lives."

The 2003 Benjamin Franklin Medal in Chemistry goes to Dr. Hochstrasser for his pioneering development of ultrafast and multi-dimensional spectroscopies. These technologies have advanced researchers' molecular-level understand-

ing of complex systems, including such fundamental processes as energy transfer in solids, reaction mechanisms in liquid solutions, the binding of small molecules on hemoglobin and the observation of structural changes in proteins.

Dr. Davis, who shares the 2003 Benjamin Franklin Medal in Physics with Masatoshi Koshihara of the University of Tokyo and John Bahcall of the Institute for Advanced Studies in Princeton, N.J., was a recipient of the 2002 Nobel Prize in Physics (*Almanac*, October 15, 2002). Both honors recognized Dr. Davis' groundbreaking research into the emission of neutrinos produced by nuclear fusion reactions in the center of the sun. The observation of these neutrinos demonstrated conclusively that the sun is powered by the fusion of hydrogen nuclei into helium nuclei.

Dr. Davis has been affiliated with Penn as a research professor since 1985 and as an adjunct professor of astronomy from 1973 to 1983.

Dr. Hochstrasser, a faculty member since 1962, also serves as director of the Regional Laser and Biotechnology Laboratories at Penn, a position he has held since 1978.



Raymond Davis

## Best Show Prize: ICA

The *Institute of Contemporary Art* has received the Best Show award from AICA for the exhibition *Charles LeDray, Sculpture 1989-2002*. The International Association of Art Critics/USA Awards are given in recognition of exceptional and important work in the visual arts by artists, curators, critics, scholars, and cultural institution. The award is the art-world equivalent of the New York Film Critics Circle or Drama Desk Awards.



Claudia Gould

*Charles LeDray, Sculpture 1989-2002*, organized by the ICA and curated by ICA director, Claudia Gould, is the first museum survey of his work. The comprehensive exhibition of recent works features approximately 30 pieces created by LeDray since 1989. The exhibit is currently on display at the Yerba Buena Center for the Arts until April 6, when it moves to the Seattle Art Museum from April 26-July 27.

## Leadership Award: Dr. Tomazinis

*Dr. Anthony Tomazinis*, professor of city and regional planning and director of TRANS-LAB, has received the Distinguished Leadership Award for a Professional Planner from the Pennsylvania Planning Association (PPA). He received the award for his sustained contribution to the profession through distinguished practice, teaching, or writing. Dr. Tomazinis was a pioneer in transportation modeling and made major contributions in methods of productivity, efficiency, and quality in urban transportation systems. His latest project led him to Greece to help plan an entire city, known as Technopolis, aimed to incubate high-tech industries.



Anthony Tomazinis

## Wolf Prize in Medicine: Dr. Brinster

*Dr. Ralph L. Brinster*, Richard King Mellon Professor of Reproductive Physiology at the School of Veterinary Medicine, has been selected as a recipient of the 2002-2003 Wolf Prize in Medicine. The Wolf Prize Jury cited him "for the development of procedures to manipulate mouse ova and embryos, which has enabled transgenesis and its applications in mice."



Ralph Brinster

Dr. Brinster shares the prize with two other scientists, *Dr. Oliver Smithies* of the University of North Carolina, and *Dr. Mario R. Capecchi*, of the University of Utah. The three researchers were honored for developing techniques "for introducing and modifying individual genes within mouse eggs and embryos."

Dr. Brinster, V '60, a veterinarian, developed a culture system to maintain mouse and other mammalian eggs in vitro and he identified many fundamental characteristics of egg culture. This was essential for the generation of transgenic animals. Dr. Brinster first showed that it was possible to colonize a mouse blastocyst with stem cells from older embryos. He was the first scientist to microinject fertilized eggs with RNA and was a pioneer in the field in applying these microinjection methods to generate transgenic mice.

The Wolf Foundation was established in Israel by the late Dr. Ricardo Wolf who served as Cuba's ambassador to Israel. The Wolf Prize in Medicine has been awarded since 1978 "for achievements in the interest of mankind and friendly relations among peoples." The 2002-2003 Wolf Prizes will be conferred by the Israeli President at a ceremony in Jerusalem on May 11.

## SEAS Research Award: Dr. Luzzi



David Luzzi

*Dr. David E. Luzzi*, professor of materials science and engineering, is the 2002-2003 recipient of the George H. Heilmeier Faculty Award for Excellence in Research. The award is given to encourage and recognize excellence in scholarly activities among the faculty.

Dr. Luzzi has been engaged in scientific exploration of atomic level structure and processes at Penn for 15 years. As the Director of the Nanotechnology Institute (NTI) he oversees the Institute's discovery and implementation activities in nano-biotechnology, which has been seeded by a \$10.5 million grant from the Commonwealth. Dr. Luzzi received his B.E. in engineering physics from Stevens Institute of Technology and his Ph.D. in materials science from Northwestern University. His research program has included scientific investigations in nanoscale phenomena and materials for NSF, NASA, the DOE, and the DOD. He is a member of a NSF Materials Research, Science and Engineering Center and a DOD Defense University Research Initiative in Nanotechnology. Over 100 peer-reviewed scientific publications and patents on nanoscale phenomena, instrumentation, and the synthesis, structure, properties and application of materials have been produced. The SEAS research award recognizes his work on carbon nanotubes and "peapods," a supramolecular hybrid assembly in which single-walled nanotubes are filled with a one-dimensional chain of molecules.

## Planners at Ground Zero

*Dr. Eugénie Birch*, professor and chair of city and regional planning, was named to the six-person advisory committee which helped rebuilding officials select new planning teams for Ground Zero. The Lower Manhattan Development Corporation eventually selected six teams to submit plans for the area. Of the teams selected two have Penn professors associated with them. *Dr. Gary Hack*, dean of GSFA, and Paley Professor, and *Dr. Daniel Libeskind*, Paul Philippe Cret Professor of Architecture, serve at Studio Daniel Libeskind, which is one of two finalists recently chosen for the Ground Zero plan.

## Dedalus Senior Fellow: Dr. Poggi

*Dr. Christine Poggi*, associate professor of art history, has been awarded the Dedalus Foundation's 2003 Senior Fellowship. Her fellowship project, *Modernity as Trauma: The Cultural Politics of Italian Futurism*, will look at the cultural program of Italian futurism in light of its changing political aspirations, from the inception of the movement in 1909 to its demise in 1944.



## Awards for Student Nurses

Student Nurses At Penn (SNAP) received several awards at the Student Nurses Association of Pennsylvania's 50th annual convention. SNAP received the Chapter Excellence Award, the Most Outstanding Website Award, and the Gold Achievement Membership Award. In addition, nursing junior *Laura Breyfogle* was elected president of the association.

## Marshall Scholar: Mr. Zimble

*Adam Zimble*, a senior in the Huntsman Program in International Studies and Business and a Joseph Wharton Scholar, has received a Marshall Scholarship, one of only 40 awarded annually. Mr.

Zimble is the fifth Penn student to win a Marshall scholarship since the program began in 1953. He will study in the United Kingdom.

## Composer Fellow: Mr. Carrillo-Cotto

*Carlos Carrillo-Cotto*, Ph.D. candidate, had been selected as American Composers Orchestra's Van Lier Composer Fellow for 2002. Mr. Carrillo-Cotto received his training at the Eastman School of Music and Yale University. The fellowship is designed as a season-long professional development program to enhance the careers of promising emerging composers. Through the Fellowship, Mr. Carrillo-Cotto will participate in a wide variety of performance,

education and outreach activities, while receiving mentoring from ACO's artistic and administrative staffs and musicians. The Fellowship is funded by the Edward and Sally Van Lier Fund for the New York Community Trust.

## Five Siebel Scholars

The following Wharton graduate students have been named Siebel Scholars Class of 2003: *Nicholas Benedict*, *Laura Bennett*, *Angela Crossman*, *Douglas Fisher*, and *Alexander Moskovitz*.

Students were chosen based upon academic merit and leadership in the first year of their graduate studies.

*In the most recent cycle of Penn's internally-funded Research Foundation, the Office of the Vice Provost for Research has announced awards to the following members of the faculty for the projects listed below.*

*The deadline for the spring Research Foundation proposals is March 15, 2003. The Research Foundation Guidelines are available from the Office of the Vice Provost for Research, 119 College Hall, and on the web at [www.upenn.edu/research/FoundationGuidelines.htm](http://www.upenn.edu/research/FoundationGuidelines.htm).*

# Research Foundation Fall 2002 Awards

*Evaline Alessandrini, Pediatrics, Medicine; Healthcare Utilization by Victims of Child Maltreatment*

*Eiichi Azuma, History, SAS; Interstitial Lives: Race, History, and Transnationalism among Japanese Americans in the American West*

*Frederic G. Barr, Pathology and Laboratory Medicine, Medicine; Downstream Targets and Genome-wide Expression Patterns Associated with the PAX3-FKHR and PAX7-FKHR Transcription Factors in Alveolar Rhabdomyosarcoma*

*Dan Ben-Amos, Folklore & Folklife, SAS; Jewish Folk-Literature*

*Edward S. Brodtkin, Psychiatry, Medicine; Development of Congenic Mouse Strains for Studies of Aggressive Behaviors*

*Shane Butler, Classical Studies, SAS; Latin Decomposition: Poetry and Plague from Lucretius to Fracastoro*

*Camille Z. Charles, Sociology, SAS; Racing for the Degree: Black Students Navigating Identity and Achievement at Selective Colleges and Universities*

*Patricia Danzon, Health Care Systems, Wharton; The Influence of Quality Report Cards on Physician Practice Patterns*

*E.J. Delikatny, Radiology, Medicine; Non-invasive Monitoring of Tumor Response to Antiandrogen Therapy*

*Emma Dillon, Music, SAS; The Sense of Sound: Music and Meaning in Thirteenth-Century France*

*Ivan Julian Dmochowski, Chemistry, SAS; In Vivo Control and Characterization of Protein Interactions by Laser Scanning Microscopy*

*Irma T. Elo, Sociology, SAS; Social Context and Maternal and Child Health in Philadelphia: A Qualitative Investigation*

*Steven S. Fakharzadeh, Dermatology, Medicine; Detection of Genetic Aberrations in Sporadic Basal Cell Carcinoma*

*Serge Fuchs, Animal Biology, Veterinary Medicine; IFNAR1 as a Putative Substrate of HOS Ubiquitin Ligase*

*Howard Goldfine, Microbiology, Medicine; Escape of Bacillus Anthracis from Phagosome and the Macrophage*

*Michael Granato, Cell & Developmental Biology, Medicine; The Zebrafish as a Model System for Motor Behavior Regulation in Psychiatric Diseases*

*Paula S. Henthorn, Clinical Studies, Veterinary Medicine; Genetic Basis of Congenital Heart Disease*

*Susan T. Herman, Neurology, Medicine; The Impact of Early Electrographic Seizures on the Development of Posttraumatic Epilepsy: A Study Utilizing Continuous Electroencephalography*

*Arlene Houldin, Division of Foundational Sciences and Health Systems, Nursing; Mothers with Breast Cancer: Support for their Children: A Pilot Study*

*Howard H. Hu, and Aalpen A. Patel, Mechanical Engineering & Applied Mechanics, SEAS; Optimum Design of Inferior Vena Cava Filters*

*A.T. Charlie Johnson, Physics and Astronomy, SAS; Upgrade of Thin Film Deposition Systems for Nanotube-based Biosensors and Detectors*

*Gary D. Kao, Radiation Oncology, Medicine; RNAi-assisted Dissection of Novel Functions of Human HDAC4, a Histone Deacetylase Involved in the DNA Damage Response*

*Amy S. Kapatkin, & Gail K. Smith, Clinical Studies, Veterinary Medicine; Correlation of Hip Laxity Measurements with Force Plate Gait Analysis of German Shepherd Dogs*

*Sean Keilen, English, SAS; Antique Dispositions: Ancient Objects and the Origins of English Literature*

*Sara B. Kinsman, Division of Adolescent Medicine, Medicine; Popular Students' Influence on Their Peers Health Behaviors*

*I. Joseph Kroll, Physics and Astronomy, SAS; An Upgrade of the Level 2 Trigger for the CDF Detector at the Fermilab Tevatron*

*Vera P. Krymskaya, Medicine, Medicine; Molecular Mechanisms of Abnormal Cell Motility in LAM*

*Michael L. McGarvey, Neurology, Medicine; Predictors of Neurologic Outcome in Thoraco-Abdominal Aneurysm Repair*

*Michael W. Meister, History of Art and South Asia Studies, SAS; Cultural History of the Western Himalayas: Architecture*

*Claire H. Mitchell, Physiology, Medicine; Purines and the Health of Retinal Ganglion Cells*

*Benjamin Nathans, History, SAS; Soviet Dissent and the Politics of Human Rights, 1953-1991*

*James J. Pilla, Radiology, Medicine; MRI Method to Determine Arterial Properties and Function*

*Kevin M. F. Platt, Slavic Languages and Literatures, SAS; Russian Translation of "History in a Grotesque Key: Russian Literature and the Idea of Revolution"*

*Ali Rahim, Architecture, GSFA; Manual for Contemporary Digital Architectural Design*

*Philip A. Rea, Biology, SAS; The Vacuum—Towards a Virtual Vacuole*

*Muredach P. Reilly, Medicine, Medicine; Protein Kinase C, Atherosclerosis and Cholesterol Efflux*

*Maurice Samuels, Romance Languages, SAS; Metaphors of Modernity: Jewish Identity and French Culture in the Mid-Nineteenth Century*

*Dylan Small, Statistics, Wharton; Improved Statistical Methods for Instrumental Variables Regression*

*David Stern, Jewish Studies, SAS; Master Workshop in the History of the Jewish Book*

*Sharon Thompson-Schill, & Lila R. Gleitman, Psychology, SAS; Visual Knowledge of Concepts in the Congenitally Blind*

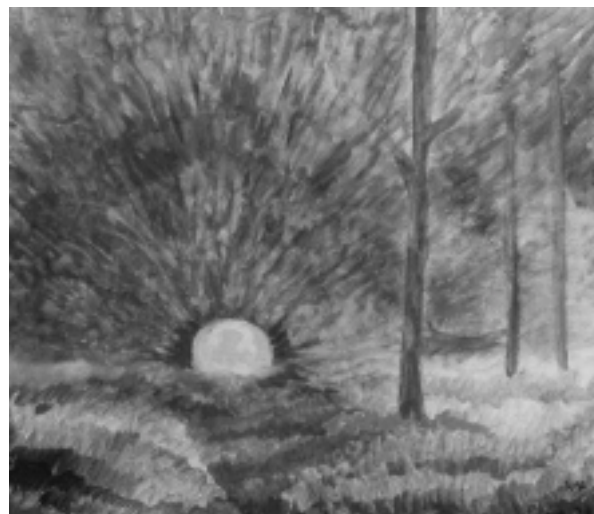
*Doris Wagner, Biology, SAS; Molecular Investigation of SPLAYED*

*Abraham J. Wyner, Statistics, Wharton; Explaining and Expanding on Boosting Methods of Classification*

A photo exhibit, *Seasonal Views of the Morris Arboretum*, is now in the Lower Gallery of the Widener Visitor Center at the Morris Arboretum through April 30.

The exhibit features the work of artist Linda Berger, a resident of Germantown who has been an Arboretum staff member for 18 years and is a graduate of the Tyler School of Art. At right, a winter view of the Swan Pond at the Arboretum. According to Ms. Berger, *Seasonal Views of the Morris Arboretum* includes vistas that evoke ancient values of seeing and experiencing surprising elements in the natural landscape. "Features in the Victorian Garden invite emergence into light and vast open space from darkness. Favorite sculptures, plants, historic structures and animals within the cultivated landscape become beloved icons. This diversity of experience sets the Morris Arboretum uniquely apart from all other arboreta worldwide."

The exhibit is free with regular admission: \$8 adults, \$6 seniors (65+) and students (13-18 with ID) and \$3 for children (3-12). Free with PENNCard, members and children under three.



*Sunscapes and Landscapes: Essence and Mystery*, by R.A. Stevens, opens on February 18 at the Burrison Art Gallery located in The Faculty Club at the Inn at Penn. The exhibit runs through March 28. The opening reception will be on Wednesday, February 19 at 4:30 p.m.

#### Dear Penn Community:

Thank you for your continued support and thanks to the more than 500 volunteers who participated in the University of Pennsylvania's Dr. Martin Luther King, Jr. 2003 Commemorative Symposium on Social Change Day of Service activities.

Volunteers painted and spruced up Wilson Elementary School and Sayre Middle School; others worked on "Helping Hands" projects for local shelters and elder care programs. Children learned about Dr. King's life by creating banners and by having volunteers read to them. Participants toured impoverished area in Philadelphia to learn about the realities of poverty in order to become active in helping to improve conditions and worked at a food bank. West Philadelphia students participated in a one-day mentoring program with Penn students. Volunteers participated in Philadelphia Reads book sorting and training.

Following is our monthly posting of community service opportunities. Please contact me via e-mail ([sammapp@pobox.upenn.edu](mailto:sammapp@pobox.upenn.edu)) or call (215) 898-2020 to volunteer for any of the programs.

—Isabel Mapp, Associate Director, Faculty, Staff and Alumni Volunteer Services, Director, Penn Volunteers in Public Service, Center for Community Partnerships

### February Volunteer Opportunities

**Adult Volunteers are needed** to tutor middle school students in the **SquashSmarts** program. SquashSmarts is a Philadelphia youth enrichment program that combines the game of squash with academic tutoring and mentoring of middle school students. Students attend practice two afternoons per week—1 hour 15 minutes of squash followed by 1 hour 15 minutes of tutoring—and then two hours on Saturday mornings for squash play only. The 3-days per week schedule continues through the school year. This personal attention, tailored to each student's needs over the course of a three-year-long commitment to the program, is what makes SquashSmarts so unique.

**Join the Penn VIPS Scholarship Committee.** Help plan the 11th Annual Penn VIPS Scholarship Program where we select and honor outstanding students from Bartram, Parkway, Overbrook, University City and West Philadelphia High Schools. Planning is underway for the June 2003 program.

**Earned Income Tax Credit ("EITC")** is the country's largest anti-poverty campaign—help low-income, working families receive the tax credits they earned. In order to make this a successful campaign, we need volunteers to help process tax forms at free tax filing sites across Philadelphia. The project will operate 25 sites, each of them open 3 sessions per week for 4 hours. Session days are scheduled on Monday and Wednesday (4-8 p.m.) and Saturday (either morning or afternoon, but not both). Each volunteer will receive IRS training and certification and will be taught all that is necessary. United Way is coordinating the training.

**Tutors!** Project Home, Saint Elizabeth's After-School Program located at 1845 North 23rd Street, is in need of tutors to help out at their after-school program. Provide homework help and listen to children read. Sessions are held Monday-Thursday from 3:30-5:30 p.m. Volunteers do not have to attend everyday.

**Help Out at the VA Medical Center.** Volunteer to write letters for and read to the elderly veterans. Do you have a valid driver's license? Your help is needed to drive a van to transport Disabled American Veterans to and from the hospital.

**Annual Penn VIPS Penny Drive** to benefit a local West Philadelphia nonprofit organization. Send suggestions for a beneficiary to: Dropsite Committee, c/o Isabel Mapp, Center for Community Partnership, Suite 519, 133 S. 36th Street/3246.

### Penn Visa: The Next Five Years

This year the Division of Business Services began a renewed five-year relationship with MBNA America, offering the Penn Visa credit card to alumni, faculty, staff and students. Through Penn Visa, the University supports many departments and services, including alumni events/activities, campus arts and culture programs, PennCard operations, credit education programs and more.

Penn's partnership with MBNA allows Penn affiliates to support the University through their Penn Visa purchases. To date, more than 20,000 members of the Penn community use Penn Visa.

Highlights of the New Agreement: Our Commitment to Protecting the Penn Community

- **Comprehensive Privacy Program** to ensure proper use of data and privacy protection
- **Easy Opt-Out** from mailing/telemarketing lists, via web ([www.business-services.upenn.edu/optout](http://www.business-services.upenn.edu/optout)) or phone (215-898-IDEA)
- **Credit Education Initiative**

#### Why MBNA?

MBNA America is recognized as the leader in affinity credit card programs in higher education. MBNA provides a product tailored to meet the needs of the institutions they serve, as well as the needs of their account holders. MBNA offers a superior program in the following respects:

- Detailed, personal review of applications and high standards required for authorization of new accounts
- Overall lower credit limits for student accounts
- Overall lower default rates for students
- Excellent customer service to account holders
- Availability of credit education materials and personnel
- High performance on investments

MBNA has been responsive to Penn's concerns and requirements throughout the renegotiation of the relationship. They have shown a willingness to work with us to enhance their positive presence, to address privacy and opt-out issues, develop appropriate marketing messages, and to work to respect our populations. Their collaboration has been critical to our faith in the benefits of the renewed partnership and its value to Penn over the next five years.

Thank you for supporting Penn and Penn Visa.  
—Lee Nunery, Vice President, Business Services



# Update

FEBRUARY AT PENN

## EXHIBITS

### Upcoming

**18** *Sunscapes and Landscapes: Essence and Mystery*; R.A. Stevens, artist; opening reception February 19, 4:30 p.m.; Burrison Gallery, Faculty Club (Faculty Club). *Through March 28.*

### Now

*Seasonal Views of the Morris Arboretum*; work of artist Linda Berger, Arboretum staff member; Morris Arboretum (Arboretum). *Through April 30.*

## FITNESS/LEARNING

**11** *Tuesday Night Square Dance*; 7:30 p.m.; St. Mary's Parish Hall, 3619 Locust Walk; \$5, \$3.50/ students; no experience or partners necessary (Tuesday Night Square Dance Guild).

**12** *Open House at College of General Studies (CGS)*; information session for adults interested in completing an undergraduate degree or in pre-health programs to satisfy requirements for medical, dental, nursing, and veterinary school; 5:45 p.m.; CGS, ste. 100, 3440 Market St.; registration: [www.sas.upenn.edu/CGS](http://www.sas.upenn.edu/CGS) or (215) 898-1041 (CGS).

## MEETING

**12** *WPSA Board*; noon; Bishop White Room, Houston Hall.

## SPECIAL EVENT

**14** *Dancesport Performance Extravaganza*; music from Abba, James Bond, the Full Monty, Austin Powers; 8 p.m.; Houston Hall; \$10, \$5/ students; info/tickets: [ballroom@pobox.upenn.edu](mailto:ballroom@pobox.upenn.edu) (Penn Ballroom Dance Society). *Also February 15.*

### Get On Board Express Almanac



Sign up to receive e-mail notification when we post breaking news between issues.

Send an e-mail message with "subscribe" as the Subject to [almanac@pobox.upenn.edu](mailto:almanac@pobox.upenn.edu) and include your name, e-mail address and mailing address.

— Ed.

## TALKS

**12** *Spirituality and Health Seminar*: discussion on Christian Science; Cheryl Shipman, CURF; 11 a.m.; Fireside Lounge, ARCH (Religious Studies, School of Social Work, School of Medicine).

**13** *Histone H2AX and Chromosome Integrity*; William Bonner, Center for Cancer Research, NCI; noon; Conference Room, John Morgan Bldg. (Radiation Oncology).

*Café-Causerie with Dr. Philippe Sansonetti, Institut Pasteur, Paris*; 2 p.m.; Cherpack Lounge, 543 Williams Hall (French Institute).

*Intangible Money Matters: Beyond the Social Life of Things*; Keith Hart, University of Aberdeen, Scotland; 4:30 p.m.; rm. 209, College Hall (Ethnohistory).

**14** *Celebration of Black Literature*; Chinua Achebe, author; 4 p.m.; Irvine Auditorium (Center for Africana Studies; Office of the President; Office of the Provost and Art Sanctuary).

**17** *Functional Analysis of the Neurofibromatosis Type 1 (NF1) Gene in Tumorigenesis and Development—Mouse Models for Tumors in the Nervous System*; Yuan Zhu, University of Texas; 10 a.m.; Grossman Auditorium, Wistar Institute (Wistar).

*Technical Knockouts: Tools, Schools and Rules in Sports Industry*; Edward Tenner, Princeton; 4:15 p.m.; rm. 337, Logan Hall (H&SS).

**Deadlines:** The deadline for the weekly Update is each Tuesday, for the following Tuesday's issue. The deadline for the March AT PENN calendar is today. For information, see [www.upenn.edu/almanac/calendar/caldead-real.html](http://www.upenn.edu/almanac/calendar/caldead-real.html).

## CLASSIFIEDS—PERSONAL

**Do you collect** Lionel trains, old typewriters, or cameras? If so, call (215) 284-3389.

### FITNESS

**Grand opening of new Yoga Studio** in University City. Power Yoga Works is located at 3925 Walnut Street next to Kinko's. We offer beginner and all levels classes daily with over 20 classes weekly. For more information visit our website at [www.poweryogaworks.com](http://www.poweryogaworks.com) or call us at (215) 243-9642.

Almanac is not responsible for contents of classified ad material.

To place a classified ad, call (215) 898-5274.

## CLASSIFIEDS—UNIVERSITY

### RESEARCH

Are you **overweight** and at least 18 years of age? You may qualify for a research study that is being conducted on an investigational medication that may improve high cholesterol. Qualified participants will receive at no cost: study related exams and lab tests, dietary counseling, study related medication and compensation for time and effort. For more information please call (215) 662-9045.

**Do You Have High Cholesterol?** Do you want to lower your cholesterol naturally, without taking medicine? Doctors at the University of Pennsylvania are launching a new study looking at the effects of adding the food, flaxseed, to a low-fat diet on lowering cholesterol levels and improving other risk factors for heart disease. The entire study lasts approximately 4 months and includes 7 short outpatient visits at the Hospital of the University of Pennsylvania in Philadelphia. There is NO medication involved with this study and participants will be compensated for their time and effort. If you are generally healthy, between the ages of 45 and 75, have high cholesterol, and think you might be interested in this study, please contact Shilpa Balikar at (215) 662-9040 or e-mail her at [balikai@sas.upenn.edu](mailto:balikai@sas.upenn.edu).

**Postmenopausal Women Needed** Post-menopausal volunteers needed for a research study examining estrogen, memory, and the ability to smell. \$50 will be given for approximately 3 hours of participation. Women 55 or older. For more information please call (215) 662-6580.

**Are you unhappy with your sex life?** If you are a healthy, post-menopausal woman who has not undergone a hysterectomy, are between the ages of 40 and 70, and are experiencing low sexual desire, you may be eligible to take part in a research trial evaluating the effects of an investigational study patch. Qualified volunteers will receive a physical exam, a Pap smear and mammogram, and study medication. Compensation will be made for your time and travel. If you are interested in participating, or would like more information, please call Tamara in the Department of Obstetrics & Gynecology at (215) 614-0010 or e-mail [tweiner@mail.obgyn.upenn.edu](mailto:tweiner@mail.obgyn.upenn.edu).

Almanac is not responsible for contents of classified ad material.

To place a classified ad, call (215) 898-5274.

## The University of Pennsylvania Police Department Community Crime Report

**About the Crime Report:** Below are all Crimes Against Persons and Crimes Against Society from the campus report for **January 27 to February 2, 2003**. Also reported were 11 Crimes Against Property (including 8 thefts, 1 attempted theft and 2 burglaries). Full reports are on the Web ([www.upenn.edu/almanac/v49/n21/crimes.html](http://www.upenn.edu/almanac/v49/n21/crimes.html)). Prior weeks' reports are also online. —Ed.

This summary is prepared by the Division of Public Safety and includes all criminal incidents reported and made known to the University Police Department between the dates of **January 27 to February 2, 2003**. The University Police actively patrol from Market Street to Baltimore Avenue and from the Schuylkill River to 43rd Street in conjunction with the Philadelphia Police. In this effort to provide you with a thorough and accurate report on public safety concerns, we hope that your increased awareness will lessen the opportunity for crime. For any concerns or suggestions regarding this report, please call the Division of Public Safety at (215) 898-4482.

01/28/03	2:00 PM	3700 Spruce St	Complainant receiving unwanted phone calls
01/28/03	11:00 PM	3700 Spruce St	Complainant receiving unwanted phone calls
01/30/03	12:12 AM	200 block S 40 St	Male urinating on highway/Cited
02/02/03	7:10 AM	3400 Spruce St	Male acting disorderly/Arrest
02/02/03	8:11 PM	3901 Chestnut	Male in possession of narcotics/Arrest
02/02/03	10:04 PM	1310 S 36 St	Complainant receiving unwanted calls

### 18th District Report

2 incidents (including 2 robberies) were reported between **January 27 to February 2, 2003** by the 18th District covering the Schuylkill River to 49th St. & Market St. to Woodland Ave.

01/31/03	6:55 AM	4300 Sansom	Robbery
02/02/03	9:23 AM	5038 Sansom	Robbery



**Almanac**

Suite 211 Nichols House  
3600 Chestnut Street, Philadelphia, PA 19104-6106  
Phone: (215) 898-5274 or 5275 FAX: (215) 898-9137  
E-Mail: [almanac@pobox.upenn.edu](mailto:almanac@pobox.upenn.edu)  
URL: [www.upenn.edu/almanac/](http://www.upenn.edu/almanac/)

The University of Pennsylvania's journal of record, opinion and news is published Tuesdays during the academic year, and as needed during summer and holiday breaks. Its electronic editions on the Internet (accessible through the PennWeb) include HTML and Acrobat versions of the print edition, and interim information may be posted in electronic-only form. Guidelines for readers and contributors are available on request and online.

EDITOR	Marguerite F. Miller
ASSOCIATE EDITOR	Margaret Ann Morris
ASSISTANT EDITOR	Natalie L. Stevens
STUDENT ASSISTANTS	Tamara Bobakova, David Fecteau, Angie Liou, William Yeoh Jamar Benyard

WPHS INTERN  
ALMANAC ADVISORY BOARD: *For the Faculty Senate*, Martin Pring (Chair), Helen Davies, Mitchell Marcus, Phoebe Leboy, Lance Donaldson-Evans, Joseph Turow. *For the Administration*, Lori N. Doyle. *For the Staff Assemblies*, Michele Taylor, PPSA; Karen Pinckney, WPSA; David N. Nelson, Librarians Assembly.

The University of Pennsylvania values diversity and seeks talented students, faculty and staff from diverse backgrounds. The University of Pennsylvania does not discriminate on the basis of race, sex, sexual orientation, religion, color, national or ethnic origin, age, disability, or status as a Vietnam Era Veteran or disabled veteran in the administration of educational policies, programs or activities; admissions policies; scholarship and loan awards; athletic, or other University administered programs or employment. Questions or complaints regarding this policy should be directed to Valerie Hayes, Executive Director, Office of Affirmative Action, 3600 Chestnut Street, 2nd floor, Philadelphia, PA 19104-6106 or (215) 898-6993 (Voice) or (215) 898-7803 (TDD).

## Surfactant Curtails Nanotube Clumping in Water

Scientists have long touted carbon nanotubes as a futuristic means of delivering drugs, fortifying brittle materials and conducting current in miniaturized circuits. But attempts to introduce actual nanotubes into these roles have often been stopped in their tracks by the slender filaments' stubborn and unhelpful tendency to clump together in solution.

Now scientists at Penn have found that a readily available chemical, a surfactant called sodium dodecylbenzene sulfonate (NaDDBS), disperses nanotubes in water with remarkable efficiency. The discovery, described in a paper published in January in the journal *Nanoletters*, represents an important step towards wider applications of nanotubes.

"Scientists have suggested many possible applications for carbon nanotubes, but tube aggregation in solution has obstructed progress," said lead author Dr. Mohammad F. Islam, a postdoctoral researcher in Penn's Department of Physics and Astronomy. "This new approach improves our ability to manipulate single tubes. Single nanotubes can now participate in controlled self-assembly, form fibers and composites, and serve as microfluidic sensors in water."

When Dr. Islam and senior author Dr. Arjun G. Yodh, professor of physics, added NaDDBS to a cocktail of water and nanotubes, the surfactant adhered weakly to the nanotubes, preventing the tubes from clinging to one another. Dr. Islam, Dr. Yodh and colleagues determined that NaDDBS increased the concentration of single carbon nanotubes in water up to 100-fold. Even at high concentrations, roughly 63 percent of nanotubes in aqueous solution remained unbound.

"Sodium dodecylbenzene sulfonate is pretty non-invasive, so we expect that the nanotubes' unique electronic, thermal, optical and mechanical properties will be preserved in suspension," said Dr. Yodh. "An added bonus of our complete solubilization approach is that it is gentle. Mixing this particular surfactant with nanotubes and water in a low-power, high-frequency sonicator, as we did, resulted in very little breakage of the nanotubes, which has been a problem with other treatments."

Carbon nanotubes tend to cling together because they are subject to substantial van der Waals attractions. While researchers have explored numerous surfactants to counter this attraction, Dr. Islam and Dr. Yodh suggest that NaDDBS's benzene ring, together with its long alkane tail and charge group, conspire to produce an unusual molecular arrangement on the nanotube surface that reduces aggregation.

Drs. Islam and Yodh were joined on the *Nanoletters* paper by co-authors Dr. Enrique Rojas, Dr. D.M. Bergey and Dr. Alan T. "Charlie" Johnson, all of the Department of Physics and Astronomy and LRSM. The research was funded by the NSF, NASA and the Petroleum Research Fund.

## Dogs Fed a Reduced-Calorie Diet Live Longer

A 14-year study of canine diet and health has found that dogs fed a calorie-restricted diet live a median 1.8 years longer than dogs allowed to eat more and are slower to develop chronic diseases such as osteoarthritis.

The findings add to the growing body of evidence that caloric restriction in a wide range of species significantly boosts longevity. Dogs are the only large mammals—and the closest human relatives—for which a diet-restriction study has been completed. Similar studies involving primates are ongoing.

The results, from scientists at Penn's School of Veterinary Medicine, Nestle Purina PetCare Company, University of Illinois, Cornell University and Michigan State University, were the subject of a September symposium in St. Louis. Partial results were published last May in the *Journal of the American Veterinary Medical Association*.

The study involved 48 Labrador retrievers from seven litters. Littermates were paired, with one dog fed 25 percent fewer calories than its sibling starting at 8 weeks of age. The researchers found a median life span of 13 years among dogs whose food intake was reduced, while dogs in the group fed a diet higher in calories were uniformly overweight and had a median life span of 11.2 years.

"Impressive as they are, the life span figures are only part of the story," said Dr. Gail K. Smith, professor of orthopedic surgery at Penn and chair of the Department of Clinical Studies at the School of Veterinary Medicine. "The study also showed that lean body conformation forestalls some chronic illnesses, most notably osteoarthritis, and that diet can either mitigate or exacerbate the expression of genetic diseases."

"This study should reinforce for dog owners the importance of keeping their dogs lean, with palpable ribs and an obvious waistline," Dr. Smith said. "Avoid giving dogs too many high-calorie treats and consider a brand of balanced dog food formulated to be low in caloric content while providing a sense of satiety."

"Dogs in the calorie-restricted group didn't require treatment for

osteoarthritis until a mean age of 13.3 years, fully three years later than the dogs in the control group," Smith said. "Because osteoarthritis is painful, this deferral represents a substantial boost in quality of life."

Dr. Smith was joined in the study, funded and conducted by Nestle Purina PetCare, by Darryl N. Biery at Penn; Richard D. Kealy, Dennis F. Lawler and Joan M. Ballam at Nestle Purina; Elizabeth H. Greeley and Mariangela Segre at Illinois; George Lust at Cornell; and Howard D. Stowe at Michigan State.

## "Jumping Genes" May Aid in Discovery of Gene Function

Researchers at Penn's School of Medicine have bred a mouse to model human L1 retrotransposons, the so-called "jumping genes." Retrotransposons are small stretches of DNA that are copied from one location in the genome and inserted elsewhere, typically during the genesis of sperm and egg cells. The L1 variety of retrotransposons, in particular, are responsible for about one third of the human genome.

The mouse model of L1 retrotransposition is expected to increase our understanding of the nature of jumping genes and their implication in disease. According to the Penn researchers, the mouse model may also prove to be a useful tool for studying how a gene functions by knocking it out through L1 insertion. Their report was in the December, 2002 issue of *Nature Genetics*.

"There are about a half million L1 sequences in the human genome, of which 80 to 100 remain an active source of mutation," said Dr. Haig H. Kazazian, Jr., chair of the Department of Genetics and senior author in the study. "This animal model will help us better understand how this happens, as well as provide a useful tool for discovering the function of known genes."

In humans, retrotransposons cause mutations in germ line cells, such as sperm, which continually divide and multiply. Like an errant bit of computer code that gets reproduced and spread online, retrotransposons are adept at being copied from one location and placed elsewhere in the chromosomes. When retrotransposons are inserted into important genes, they can cause disease, such as hemophilia and muscular dystrophy. On the other hand, retrotransposons have been around for 500 to 600 million years, and have contributed a lot to evolutionary change.

For some time, researchers have been trying to understand how retrotransposons affect the genome and, in addition, what science may learn from the techniques they employ. According to Dr. Kazazian and his colleagues, the mouse model displays high-frequency chromosome to chromosome retrotransposition of human L1s, which behave in exactly the same way as they do in humans. While the current tissue culture model works well, it does not mimic the way retrotransposons jump in chromosomes.

The researchers believe that by understanding the mechanics of retrotransposition, they might be able to use similar techniques for genetic therapies in humans. They also hope to learn more about the basic mysteries behind retrotransposition, such as why L1 retrotransposons only seem to effect the germ line and not any other type of cell in the body.

Funding for this research was provided by grants from the NIH.

## Optimism in HIV-Positive Patients May Lead to Risky Moves

New study findings suggest that HIV-positive patients who believe they will live for many years are more likely to miss medication doses and to not practice safe sex than their peers who are less hopeful. Optimism can often help patients cope with a medical condition; but these findings indicate that in the context of HIV, there can be negative consequences to a positive outlook, according to Dr. William C. Holmes, assistant professor of medicine and epidemiology, and medical student Joseph L. Pace.

The authors surveyed 220 HIV-positive people about their backgrounds, disease history, attitude about their illness and health behaviors. The investigators found that people were more likely to use negative words about being HIV-positive when they were first diagnosed than at the time they completed the surveys. Most of the patients said they thought they would live for many years, and 27 percent said they expected to reach old age. White respondents, those with less education, and patients with relatively low levels of CD4 cells were less likely to hold out hope for the future.

Those patients who said they were relatively optimistic about the future were twice as likely as those with relatively pessimistic outlooks to sometimes forget to take their medications, and they were almost twice as likely to report not practicing safe sex. About 26 percent of optimists and 13 percent of pessimists occasionally forgot to take their medications; 57 percent of optimists and 29 percent of pessimists said they did not always practice safe sex.

The full report, "HIV-Seropositive Individuals' Optimistic Beliefs About Prognosis and Relation to Medication and Safe Sex Adherence" was published in the September issue of the *Journal of General Internal Medicine*.