

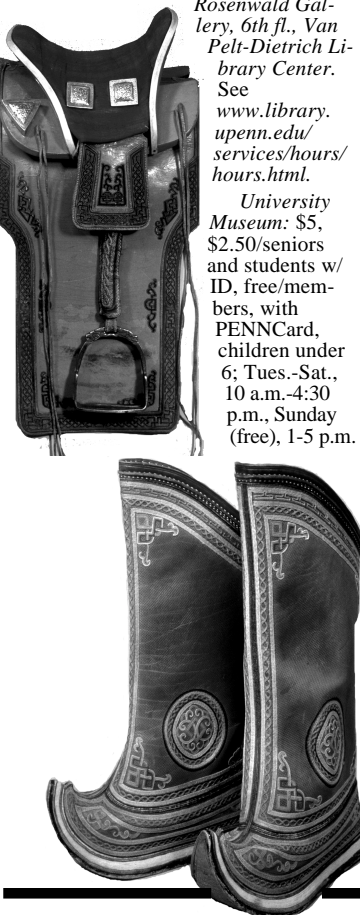
- ACADEMIC CALENDAR**
- 5** Family Weekend. Through October 7.
- 12** Drop Period Ends.
Fall Term Break. Through October 14.
- 29** Advance Registration, Spring Term. Through November 11.

- CHILDREN'S ACTIVITIES**
- 2** Story Hour; 11 a.m.; Penn Bookstore. Also October 9, 16, 23, & 30 (Bookstore).
- 6** Children's Workshop Fasten-ating" Buttons! Dancing Blankets of the Northwest Coast Indians; an Anthropologists in the Making program; ages 8-12 explore Raven's Journey: The World of Alaska's Native People exhibition; design a button blanket in a workshop. 10 a.m.-noon; University Museum; \$5/materials fee. Pre-registration required: (215) 898-4015 (Museum).

- Morris Arboretum**
Info.: (215) 247-5777, ext. 156 or 125; or www.upenn.edu/morris.
- 13** Orienteering at the Arboretum; ages 8 and up; 10 a.m.- noon; \$8; \$6/ members.
- 21** The Truth About Bats; ages 8 and up; learn where and when bats can be seen in our area and about their many beneficial characteristics; 1-3 p.m.; \$10; \$8/members.
- 27** KYW Halloween Spook-tacular; ghosts and goblins of all ages can join in a costume parade through the garden and enjoy the music and "not-so-scary" stories of local entertainer Ed Stivender; discount on admission with costumes; 1-3 p.m. (Arboretum; KYW).

- CONFERENCES**
- 6** Egypt Revealed: Reports from the 2001 Excavation Season; world-renowned Egyptologists report on their most recent excavation work.Including Drs. Zahi Hawass, Kent Weeks, Mark Lehner, Salima Ikram, and UPM's Egyptian Section Curator-in-Charge David Silverman. Find out how recent discoveries at The Valley of the Golden Mummies, The Lost Tombs of the Sons of Ramesses II, The Village of the Pyramid Workers, and The Royal Cemetery of King Teti are changing what we know and think about the ancient Egyptians. 9 a.m.; \$195. Info./registration: (773) 549-2852 or www.sevenwonderstravel.com. Also October 7 (Seven Wonders Travel; University Museum).
- 20** Substance Abuse; lecture series by senior clinicians from the Center for Cognitive Therapy; 9 a.m.-noon; \$65; info.: (215) 898-4106 (Center for Cognitive Therapy).

- EXHIBITS**
- Admission Donations and Hours**
Arthur Ross Gallery, Fisher Fine Arts Library: free, Tues.-Fri., 10 a.m.-5 p.m., Sat. & Sun., noon-5 p.m.
Burrison Gallery, Faculty Club, Inn at Penn: free, Mon.-Fri, 8 a.m.-6 p.m.
Charles Addams Gallery: free, Mon.-Fri., 9 a.m.-5 p.m.
Esther Klein Gallery, 3600 Market: free, Mon.-Sat., 9 a.m.-5 p.m.
Institute of Contemporary Art: \$3, \$2/students, artists, seniors, free/members, children under 12, with PENNCard, and on Sundays 11 a.m.-1 p.m.; open: Wed.-Fri., noon-8 p.m.; Sat. & Sun., 11 a.m.-5 p.m.
Kelly Writers House, 3805 Locust Walk: See www.english.upenn.edu/~wh/.
Kroiz Gallery, Fisher Fine Arts Bldg., 220 South 34th St.: Mon-Fri., 10 a.m.-5 p.m.
Morris Arboretum: \$6, \$5/seniors, \$4/students, free with PENNCard, children under 6; Mon.-Fri., 10 a.m.-4 p.m.; Wed. & Thurs. 10 a.m.-8 p.m.; Sat. & Sun., 10 a.m.-5 p.m.



- Upcoming**
- 1** Hidden in Plain Sight: Musical Treasures in the Penn Library; opening reception: November 9. Kamin Gallery, 1st fl., Van Pelt-Dietrich Library. Through December 31.
- 2** Zola and the Dreyfus Affair: Intellectuals and the Struggle for Social Justice; opening reception: 5:30-7:30 p.m.; with presentations by Lorraine Beitler; Martine Le Blond-Zola, great-granddaughter of Emile Zola. Rosenwald Gallery, 6th fl., Van-Pelt Library. Through December 3 (Beitler Family Foundation; Penn Library).
- 16** Fine Arts Drawing Show; features representational, abstract and conceptual work of graduate and undergraduate fine arts students. Charles Addams Gallery (Fine Arts).
- 20** Modern Mongolia: Reclaiming Genghis Khan; features Mongolian cultural treasures from the National Museum of Mongolian History, Ulaanbaatar, Mongolia. Life-size dioramas, photographs, films reconstruct 20th c. Mongolian life. Opening reception: 11 a.m.-4 p.m. 2nd fl., Dietrich Gallery, University Museum. Through July 2002. See Special Events.

- Now**
- Gerard DiFalco: Retrospective 1988-2001— Madrid Dreams, Strega Myths; art work in mixed media: oil, watercolor and acrylic; vibrant, surreal cityscapes capped on both ends by the memorials to two Cuban artists: poet Nelson Blanco and pianist Antonio Carbonel. Kelly Writers House Art Gallery. Through October 6.
- Undergraduate Faculty Exhibition; showcase of undergraduate fine arts faculty work. Charles Addams Gallery. Through September 30 (GSFA).
- Garden Railway; designed by landscape architect Paul Busse; large-gauge model trains wind their way through a garden of models of 34 historic Philadelphia areas buildings including Independence Hall. New this year—Great Lighthouses; display uses natural materials to construct the buildings. Through October 8.
- Tremain Smith: In the Presence of Spirits; West Philadelphia artist's abstract works incorporate collage, found objects, and wax. Esther Klein Art Gallery. Through November 2.
- Rudi Germreich: Fashion Will Go Out of Fashion; best known for the "monokini" topless swimsuit and credited with liberating women from clothes that constrained the body. Pieces from collections in LA NY, Philadelphia and private collectors and dealers. ICA. Through November 11.
- Travels in the Labyrinth—Mexican Art in the Pollak Collection; works by 46 Mexican artists born between 1871-1940; Arthur Ross Gallery. Through December 9 (Provost's Spotlight Series).

- Ongoing**
- Ancient Greek World; Canaan & Ancient Israel; Living in Balance: Universe of the Hopi, Zuni, Navajo & Apache; Ancient Mesopotamia: Royal Tombs of Ur; The Egyptian Mummy: Secrets & Science; Raven's Journey: World of Alaska's Native People; Buddhism: History & Diversity of a Great Tradition; University Museum.
- Healing Plants: Medicine Across Time and Cultures; Morris Arboretum.
- University Museum Tours**
Meet at the main entrance; 1:30 p.m. Free with Museum admission donation. Info: www.upenn.edu/museum.
- 6** Ancient Egypt. Also October 28.
- 13** Mesoamerica.
- 14** The Classical World.
- 20** Modern Mongolia. Also October 21.
- 27** China.

Museum's Mongolian Treasures
Below, from left to right: Classic saddle for everyday use; Halh woman's hand-embroidered leather boots; Halh man's summer deel and vest, early 20th century; part of a married Halh woman's headdress from the early 20th century; a Halh married woman's summer deel and long vest from the early 20th century. See Exhibits and Special Events.



Treat Yourself to Dance
Hubbard Street Dance Chicago are sexy, energized dancers with slinky shifts and lots of pizzazz. This year, the troupe returns to Annenberg with a new program featuring Ohad Naharin's "Minus 16."

See On Stage.

- FILMS**
- 13** Storm Over Asia; 1928 silent film; V.I. Pudovkin, director; accompanied by live music by Yat-Kha; 8 p.m.; International House; \$15 (International House).
- 22** Big; starring Tom Hanks; 4 p.m.; Film Viewing Center, 4th fl, Van Pelt-Dietrich Library Center. Also October 23, 6 p.m. (Van Pelt-Deitrich Library).
- Dave; starring Kevin Kline and Sigourney Weaver; 6 p.m.; Film Viewing Center, 4th fl, Van Pelt-Dietrich Library Center. Also October 23, 4 p.m. (Van Pelt-Dietrich Library).
- 25** 1996 Was a Good Year For Tourism; part of The Other Israel: Documentary Film Series; 7 p.m.; Carolyn Hoff-Lynch Rm., Chemistry Bldg. (Jewish Studies Program).
- MEETINGS**
- 10** A-3 General Assembly; noon-1 p.m.; Terrace Room, Logan Hall.
- 17** University Council; 4-6 p.m.; Bodek Lounge, Houston Hall. Info.: (215) 898-7005.

- MUSIC**
- 4** Arpeggio Jazz & Music Ensemble; 5-7 p.m.; 36th St. Plaza. Also October 11, 18 & 25 (Penn Bookstore).
- 7** Steve Gillette & Cindy Mangsen; folk singer-songwriters; 7:30 p.m.; St. Mary's Church; \$12/advance; \$15/door (St. Mary's Church).
- 11** Songwriter's Round Robin; singer-songwriter Gina Scipione with others; 8-10 p.m.; Philadelphia Cathedral Chapel; \$5 (Philadelphia Cathedral).
- 28** Paddy Keenan; Irish traditional music; 7:30 p.m.; St. Mary's Church; \$13/advance; \$16/door (Cherry Tree Music Co-op).

October

AT PENN

Whenever there is more than meets the eye, see our web site, www.upenn.edu/almanac/.



- Penn Presents**
8 p.m.; Info./tickets (215) 898-6701 or www.PENNPresents.org.
- 13** Anoushka Shankar; sitar player and daughter of Ravi Shankar, sitar virtuoso and composer; with Tanmoy Bose and Bokram Ghosh, tanpura players. Zellerbach Theatre, Annenberg Center; \$29; \$23; \$19 (WYBE).
- 24** Wynton Marsalis Septet; featuring Jazz trumpeter Wynton Marsalis; Herlin Riley, drums; Rodney Whitaker, bass; Wess Anderson, reeds; Victor Goines, reeds; Wycliffe Gordon, trombone; Zellerbach Theatre, Annenberg Center; \$49; \$45; \$37 (WRTI-FM; Inn at Penn).
- 26** Marcus Roberts: Rags to Rhythm; jazz pianist and composer performs with his trio; Zellerbach Theatre, Annenberg Center; \$34; \$29; \$24. (WRTI-FM).
- 27** Russian State Symphony Orchestra; Valery Polyansky, conductor; Valentina Listsa, Fazil Say, piano soloists; 8 p.m.; Irvine Auditorium; \$40; \$35; \$30 (WYBE).

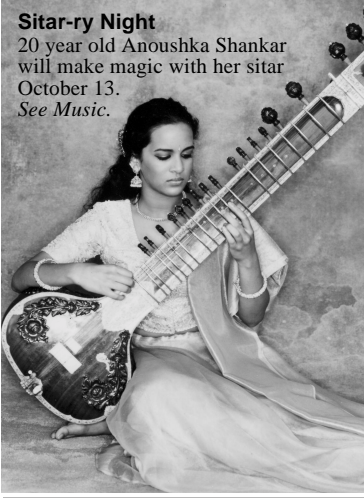
- ON STAGE**
- Penn Presents**
7:30 p.m., Info.: (215) 898-6701 or www.PENNPresents.org.
- 18** Hubbard Street Dance Chicago; featuring a new program by Ohad Naharin including "Minus 16" an ensemble piece set to traditional music, techno and hits of Dean Martin; Zellerbach Theatre, Annenberg Center; \$35; \$33; \$31. Also October 19, 8 p.m.; and October 20, 2 & 8 p.m.
- 23** The Perks Dance Music Theatre; under the direction of Rebecca Stenn, Perks Dance Music Theatre brings athletic dance styles to the stage; Prince Theatre, Annenberg Center; \$28. Also October 24 & 25, 7:30 p.m.

- RELIGION**
- 25** Orthodox Vespers for the Feast of St. Demetrios of Thessalonika; 6 p.m.; St. Bede Chapel, Newman Hall (Orthodox Christian Fellowship at Penn).

- SPECIAL EVENTS**
- 3** Faculty Club Open House; 4-6 p.m.; Faculty Club, Inn at Penn (Faculty Club).
- 4** SPEC Crafts Fair; 10 a.m.-6 p.m.; Locust Walk. Info.: spec@dolphin.upenn.edu. Also October 5 (SPEC).
- 7** Fall Family Festival; make your own scarecrow (\$10); paint a pumpkin (\$1.50-\$2); sample varieties of apples (\$0.25); entertainment by the Mystery Juggling Company; a cappella group, the Philadelphia Revels; 11 a.m.- 3 p.m.; Morris Arboretum. Info.: (215) 247-5777, ext. 156 or 125 (Arboretum).
- 11** Night of the Flamenco; part of Hispanic Heritage Month; readings of Southern Spanish & Andalusian poetry connected to flamenco; live flamenco performance by Fiesta Flamenco; 7 p.m.; Writers House. Info.: wh@english.upenn.edu (GIC; La Casa Latina; Writers House).
- 13** Freeman's Roadshow; 10 a.m.-3 p.m.; appraisals/seminars —10 a.m., 11:15 a.m., 12:30 p.m. & 2:15 p.m.; appraisals—Hall of Flags, Houston Hall; seminars— auditorium, Houston Hall; \$10/with reservation; \$15/at the door. Reservations/info.: (215) 627-2300 (Penn Alumni Club; Faculty Club; Wharton Alumni Club).
- 17** Small Lunch with American Author Dorothy Allison; 12:30-2 p.m.; Kelly Writers House. RSVP/Info.: (215) 573-

- WRIT, wh@english.upenn.edu or www.english.upenn.edu/~wh. See Talks, reverse (Women's Studies; Writers House).
- 20** Penn Family Day; day-long celebration for Penn employees and their families; Tailgate Party & Children's Activities— 11 a.m.-noon; Franklin Field; Penn Family Activities—11 a.m.-4 p.m.; Museum; Penn vs. Yale football— noon; Franklin Field; free/faculty & staff; \$2/person. Info.: www.hr.upenn.edu/quality/staffrecognition/familyday.asp (Human Resources).
- Modern Mongolia: Reclaiming Genghis Khan; celebrate the opening of this all-new exhibit with authentic Mongolian dance performances, throat singing, children's workshops and more. 11 a.m.-4 p.m. University Museum. Info.: (215) 898-4890. See Exhibits (Museum).
- 25** Wine Tasting Wines of Antiquity: A Mongolian Feast; an evening of Mongolian-inspired food, wines from around the world, music and more, celebrating the opening of Modern Mongolia: Reclaiming Genghis Khan 6:30 p.m. University Museum; \$45; \$35/advance; \$30/ members. Info.: (215) 898-5093 (Young Friends of the University of Pennsylvania Museum).

- SPORTS**
- Tickets for football games \$10, \$5 seniors/children, free with PENNCard. Call ticket office (215) 898-6151. See www.upenn.edu/athletics.
- 4** Field Hockey vs. La Salle; 7 p.m.
- 5** Sprint Football vs. Princeton; 7:30 p.m.
- 6** (M) Soccer vs. Cornell; noon.
(W) Soccer vs. Cornell; 2:30 p.m.
Football vs. Holy Cross; 12:30 p.m.
- 7** Field Hockey vs. Cornell; noon.
- 10** (M) Soccer vs. Philadelphia University; 3:30 p.m.
- 12** Volleyball vs. Columbia; 7 p.m.
- 13** Volleyball vs. Cornell; 4 p.m.
Lightweight Rowing—Navy Day Regatta; All Day.
Heavyweight Rowing—Navy Day Regatta; All Day.
(W) Rowing—Navy Day Regatta; All Day.
- 17** Field Hockey vs. Georgetown; 7 p.m.
- 19** Volleyball vs. Yale; 7 p.m.
(M) Tennis, Penn Classic; All Day.
- 20** Volleyball vs. Brown; 4 p.m.
(W) Soccer vs. Yale; noon.
Football vs. Yale; noon.
(M) Soccer vs. Yale; 2:30 p.m.
Field Hockey vs. Yale; 6 p.m.
(M) Tennis-Penn Classic; All Day.
(M) Tennis-Penn Classic; All Day.
- 21** (M) Soccer vs. Rutgers; 2:30 p.m.
- 23** Sprint Football vs. Cornell; 7:30 p.m.
- 26** Lightweight Rowing—Head of the Schuylkill; All Day.
- 27** Heavyweight Rowing—Head of the Schuylkill; All Day.
(W) Rowing—Head of the Schuylkill; All Day.



Sitar-ry Night
20 year old Anoushka Shankar will make magic with her sitar October 13.
See Music.

Unless otherwise noted all events are open to the general public as well as to members of the University. For building locations, call (215) 898-5000 between 9 a.m. and 5 p.m. Listing of a phone number normally means tickets, reservations or registration required.

This October calendar is a pull-out for posting. Almanac carries an Update with additions, changes and cancellations if received by Monday noon prior to the week of publication. Members of the University may send notices for the Update or November At Penn calendar.

TALKS

1 *Molecular Control of Smooth Muscle Differentiation During Vascular Development and Following Vessel Injury*; Gary K. Owens, University of Virginia; 4-5 p.m.; Austrian Auditorium, CRB (Institute for Human Gene Therapy [IHGT]).

2 *A New Model for Metastasis Based upon Direct Observation of Tumor Cells in the Lung*; Ruth J. Muschel, pathology & laboratory medicine; noon; 2nd fl conference room, Vagelos Research Laboratories (IME).

Use of Site-Specific Recombinases to Explore Glucose Homeostatic Mechanisms in the Mouse; Mark A. Magnuson, Vanderbilt University Medical Center; noon; Austrian Auditorium, CRB (Biochemistry & Biophysics).

Avid and Protocol: Composing New Music for the New Hollywood; Paul Chihara, UCLA; 5 p.m.; rm. 302, Music Bldg. (Music).

Discovering the Sacred Link—The Way of the Himalayan Masters; Pandit Rajmani Tigonait, Himalayan Institute; 7 p.m.; University Museum; \$15/advance; \$20/door. Tickets/info.: 1-800-822-4547 or www.himalayaninstitute.org (University Museum; Himalayan Institute).

3 *Cellular and Viral Factors Involved in the Assembly of Influenza A Virus*; Christopher Broder, Uniformed Services University; noon; auditorium, CRB (Microbiology).

George Nick Slide Lecture; George Nick, painter; 5 p.m.; rm. B-3, Meyerson Hall (Fine Arts).

4 *The Growing Gulf Between Men and Women*; Andrew Hacker, scholar of race and contributor to the *New York Review of Books*; 4 p.m.; rm. 17, Logan Hall (Sociology).

5 *Ownership and the Quality of Chronic Kidney Disease Care*; Neil Powe, Johns Hopkins Medical Institute; noon-1:30 p.m.; auditorium, Colonial Penn Center (LDI Research Seminar Series).

Science and Sustainable Practice; Gilman Veith, EPA, National Health and Environmental Effects Research Laboratory; 12:15-1:45 p.m.; Auditorium, Wistar (Institute for Environmental Studies [IES]).

Disturbing Beauty: John Singer Sargent's Construction of the Feminine; Susan Sidlauskas, history of art; 3 p.m.; Rich Seminar Rm. 201, Jaffe Bldg. (History of Art).

Merchants of Health: American Medicine and the Rise of Modern Con-

TALKS

sumer Culture; Nancy Tomes, SUNY Stony Brook; 4:15 p.m.; rm. 337, Logan Hall (History & Sociology of Science).

8 *Genetic Manipulation of the Dendritic Cell- T Cell Interaction*; Drew M. Pardoll, Johns Hopkins University; 4-5 p.m.; Austrian Auditorium, CRB (IGHT).

TBA; Vinh-Kim Nguyen, Montreal General Hospital; 4:15 p.m.; rm. 337, Logan Hall (History & Sociology of Science).

Sherman Fleming Slide Lecture; Sherman Fleming, performance artist; 5 p.m.; rm. B-3, Meyerson Hall (Fine Arts).

9 *Use of Metabolic Engineering to Define New Therapeutic Strategies for Diabetes*; Christopher B. Newgard, University of Texas Southwestern Medical Center; noon; Austrian Auditorium, CRB (Biochemistry & Biophysics).

IME Biophysics Workshop; noon-4 p.m.; *details TBA*; (IME Interdisciplinary Seminar Series).

10 *Membrane Fusion and Poration in the Pathogenesis of Infectious Diseases*; Joshua Zimmerberg, NIH; noon-1 p.m.; JMB Reunion Hall (Microbiology).

Max Weber Meets the Belmont Report: Toward a Sociological Account of Principalism; John Evans, UCLA; noon-1:30 p.m.; suite 320, Center for Bioethics (Center for Bioethics).

The Anatomy of Infidelity: Structures of Error Prone and Accurate DNA Polymerases; Thomas E. Ellenberger, Harvard Medical School; 4 p.m.; Grossman Auditorium, Wistar Institute (Wistar).

11 *Making Policy at the Federal Reserve*; Anthony Santomero, Federal Reserve Bank of Philadelphia; 4:30-6 p.m.; rm. 351, Steinberg Hall-Dietrich Hall (Wharton Business & Public Policy).

15 *Modeling and Optimization in Protein and Metabolic Engineering*; Costas D. Maranas, Penn State University; 3:30-4:30 p.m.; rm. 337, Towne Bldg. (Chemical Engineering).

Facing Loss: Laws of Mourning in Jewish Law; Moshe Halbertal, Hebrew University; 4 p.m.; rm. 240-A, Silverman Hall (Law School).

Identification and Targeting of Cancer Stem Cells; Michael F. Clarke, University of Michigan Medical Center; 4-5 p.m.; Austrian Auditorium, CRB (IGHT).

William Pulteney Alison and the Domain of Public Health; Christopher Hamlin, University of Notre Dame; 4:15 p.m.; rm. 337, Logan Hall (History & Sociology of Science).

TALKS

Thomas Chimes Slide Lecture; Thomas Chimes, painter; 5 p.m.; rm. B-3, Meyerson Hall (Fine Arts).

16 *A Role for mTOR in Insulin and Amino Acid Signaling in Beta-cell Transcription and Translation*; Michael McDaniel, Washington University School of Medicine; noon; Austrian Auditorium, CRB (Biochemistry & Biophysics).

Sub-Cellular Immunotargeting of Therapeutic Cargoes to Endothelial Cells; Vladimir R. Muzykantov, pharmacy; noon; 2nd fl conference room, Vagelos Research Laboratories (IME; Bioengineering).

Black Voice, White Voice: Crossing Over in Jazz; Elaine Hayes, GSFA; 5 p.m.; rm. 302, Music Bldg. (Music).

17 *Working From the Outside: Intracellular Growth of Legionella Pneumophila within Macrophages*; Ralph Isberg, Tufts University Medical School; noon; Austrian Auditorium, CRB (Microbiology).

Before Burial: Death and Law; Moshe Halbertal, Hebrew University; 4 p.m.; rm. 240-A, Silverman Hall (Law School).

Repression by Nuclear Hormone Receptors; Mitchell A. Lazar, Medicine; 4 p.m.; Grossman Auditorium, Wistar Institute (Wistar).

Woodrow Wilson; Bruce Kuklick, history; 4-5:30 p.m.; Rm. 200, College Hall, (History).

Conversations with Dorothy Allison; author of Bastard Out of Carolina; 4:30 p.m.; rm. 17, Logan Hall. *See Special Events, reverse* (Judith Berkowitz Endowed Lecture in Women's Studies).

Celestial Catastrophies in Human Prehistory; Anthony L. Peratt, Los Alamos National Laboratory; Charles Alcock, astronomy & astrophysics; Harold Dibble, anthropology; Robert Giegengack, earth and environmental science; Jeremy A. Sabloff, University Museum; 6-7:30 p.m. University Museum; registration required. Optional reception follows: \$20/person. Info.: (215) 898-4890 (IES; University Museum; Center for Ancient Studies).

18 *Algerian/World History and Population Studies*; Matthew Connelly, Columbia University; 4:30 p.m.; rm. 209, College Hall (History).

Large City Planning Directors' Symposium; directors of city planning: Elizabeth Blume, Cincinnati; Michael Dobbin, Atlanta; Maxine Griffith,

TALKS

Philadelphia; and Todd Bressi, executive director, Places; 6 p.m.; rm. B-3, Meyerson Hall (GSFA).

19 *Re-investigating Akkadian Glyptic Art*; Yelena Rakic, history of art; 3 p.m.; Rich Seminar Rm., Jaffe Bldg. (History of Art).

Shahzia Sikander Slide Lecture; Shahzia Sikander, painter; 5 p.m.; rm. B-3, Meyerson Hall (Fine Arts).

22 *Pharmacogenetics: Trials in a Drug Therapy Revolution*; Oonagh Corrigan, Goldsmiths College; noon-1:30 p.m.; suite 320, Center for Bioethics (Center for Bioethics).

Isobutane Conversion over Metal Alloy and Acidic Catalysts; James A. Dumesic, University of Wisconsin at Madison; 3:30-4:30 p.m.; rm. 337, Towne Bldg. (Chemical Engineering).

Strategies to Enhance the Oncolytic Effect of Replicating Adenoviral Vectors; John G. Hays, NYU School of Medicine; 4-5 p.m.; Austrian Auditorium, CRB (IGHT).

Responsibility, Republicanism, and the Insanity Defense in Eighteenth-Century Hamburg; Mary Lindermann, Carnegie Mellon University; 4:15 p.m.; rm. 337, Logan Hall (History & Sociology of Science).

Something Else Politics; Craig Saper, University of the Arts, on the Fluxus movement; 4:30 p.m.; Kelly Writers House (Writers House).

Chris Sullivan Media Presentation/Slide Lecture; Chris Sullivan, animator; 5 p.m.; rm. B-3, Meyerson Hall (Fine Arts).

23 *RNA Dominance in Neuromuscular Disease*; Maurice S. Swanson, University of Florida; noon; Austrian Auditorium, CRB (Biochemistry & Biophysics).

Research on Genetics, Biorisks and Society at the University of Nottingham; Robert Dingwall, University of Nottingham; noon-1:30 p.m.; suite 320, Center for Bioethics (Center for Bioethics).

Shaker is a Stretch Chamel? Calcium Channels are Stretch Channels? What's Going On?; Catherine E. Morris, University of Ottawa; noon; 2nd fl conference rm., Vagelos Research Laboratories (IME).

Bridging Two Worlds: Technology at Penn; Louis P. Bememan, Center for Technology Transfer Program; 1 p.m.; Faculty Club, Inn at Penn (Women's Club).

The Development of Transgenic Mouse Models to Study the Pathogenesis of Brain Tumors; Mark A. Israel, Dartmouth Medical School; 4 p.m.; Grossman Auditorium, Wistar Institute (Wistar).

Discussion of Donald Martino

TALKS

Compositions; Donald Martino, Harvard University; 4:30 p.m.; rm. 302, Music Bldg. (Music).

24 *Kaposi's Sarcoma-Associated Herpesvirus and Episome Persistence*; Malcolm Martin, NIH; noon; auditorium, CRB (Center for AIDS Research).

Platelet Membrane GP IIb-IIIa in Thrombosis, Signaling and Inflammation; David R. Phillips, COR Therapeutics, Inc.; noon; rm. M-100, John Morgan Bldg. (IME; Thrombosis/Cardiovascular Biology Seminar Series).

Cut To: Subjectivity, Time and the Movies; Gary Ross, screenwriter/director; 5:30 p.m.; International House (Film Studies).

25 *TBA*; Edward G. Rendell; 4:30 p.m.; Levy Conference Room, Silverman Hall (Law School).

What's the Big Deal About the Big Bang?; Chung-Pei, Michele Ma, astronomy; 7 p.m.; Newman Hall (Orthodox Christian Fellowship at Penn).

26 *When You Come to a Fork in the Road, Take It! The Radon Issue*; Bill Belanger, EPA, Air Protection Division; 12:15-1:45 p.m.; Grossman Auditorium, Wistar Institute (IES).

TBA; Claudia Gould, ICA; 3 p.m.; Rich Seminar Rm. 201, Jaffe Bldg. (History of Art).

29 *Dendritic Cell and Exosome-based Immunotherapy of Cancer*; Laurence Zitvogel, Institute Gustav Roussy; 4-5 p.m.; Austrian Auditorium, CRB (IGHT).

New Light on Lighting: The Role of the Lumen in the Evolution of the Lighting Industry; Leslie S. Levine, Fusion Lighting Inc.; 4:15 p.m.; rm. 337, Logan Hall (History & Sociology of Science).

Marta Chilindron Slide Lecture; Marta Chilindron, sculptor; 5 p.m.; rm. B-1, Meyerson Hall (Fine Arts).

30 *Intramembranous Proteolysis of Notch and APP and the Genesis of Alzheimer's Disease*; Dennis J. Selkoe, Harvard Medical School; noon; Austrian Auditorium, CRB (Biochemistry & Biophysics).

Polyphony and Sacred History of Gabriel Sagard's Histoire du Canada (1636); Olivia Bloechl, graduate student, GSFA; *Du 'Jazz Hot' lá créole: Josephine Baker Sings Offenbach*; Andrew Fry, Oxford; 5 p.m.; rm. 302, Music Bldg. (Music).

31 *Using Mouse Genetics to Prove Host-Virus Interactions*; Judy Lieberman, Harvard Medical School; noon; Austrian Auditorium, CRB (Center for AIDS Research).

FITNESS/ LEARNING

Jazzercise; 5:30-6:30 p.m.; Tuesday and Thursday; Newman Center; first class free; \$4.50/class, \$3.50/students; Carolyn Hamilton, (215) 662-3293 (days) or (610) 446-1983 (evenings).

4 *Where Will My Older Relative Live?*; 11:30 a.m.-1 p.m.; rm. 311, Houston Hall; registration: www.hr.upenn.edu/quality/workshop.asp (Quality of Life Workshops).

6 *Heating and Cooling*; how to avoid costly winter heating bills; 10 a.m.-noon.; University City District, 3940 Chestnut St.; \$5/UCHS members, \$10/ others (University City District).

8 *Strictly Speaking: Toastmasters' Meeting*; public speaking; 6:30 p.m.; Penn Bookstore. *Also October 22* (Bookstore).

13 *Philadelphia Cares Day*; volunteers go to Philadelphia public schools and paint murals and hallways, landscape school yards, whitewash graffiti. Info.: (215) 898-2020 or sammapp@pobox.upenn.edu (Penn VIPS).

16 *The Insider's Guide to Graduate Education at Penn*; a program with first-hand advice for first and second year Ph.D. students; 4-5:30 p.m.; Ben Franklin Room, Houston Hall (Career Services).

18 *Handling the Job of Customer Service*; 11:30 a.m.-1 p.m.; Rm. 223, Houston Hall; details and registration: www.hr.upenn.edu/quality/workshop.asp (Quality of Life Workshops).

ESL Evening Courses
6-8:30 p.m.; Bennett Hall. Registration: \$15/academic year, by *October 23*. Info.: www.sas.upenn.edu/elp or (215) 898-8681.

Courses for Elementary Levels
30 *Conversation Practice*; Tuesdays; \$265. *Through December 11*.

Courses for Intermediate & Advanced Levels
29 *Written Communication Practice*; Mondays; \$265. *Through December 10*.
TOEFL/TWE Preparation; Mondays & Wednesdays; \$530. *Through December 12*.

30 *Conversational Interactions*; Tuesdays; \$265. *Through December 11*.
Pronunciation Improvement; Tuesdays; \$265. *Through December 11*.

31 *Business Writing*; Wednesdays; \$265. *Through December 12*.

Kelly Writers House
3805 Locust Walk. Info.: (215) 573-WRIT, wh@english.upenn.edu or www.english.upenn.edu/~wh.

1 *Penn & Pencil Club*; creative writing group for faculty and staff; 5:15 p.m.; room 202.

3 *How to Write Memoir, and a few words about How to Read It*; Mickey Pearlman, author; one of her memoir essays appears in the recently published book, *Father: famous writers celebrate the bond between father and child*. 6-8 p.m.

READINGS/SIGNINGS

10 *H.W. Brands*; book signing and discussion on *Everything You Always Wanted to Ask About Ben Franklin*; 5:30-7 p.m.; Rosenwald Gallery, Annenberg Rarebook and Manuscript Library, Van Pelt -Dietrich Library; Info.: 1-800-390-1829, (Library)

Penn Bookstore
Info.: (215) 898-5965

1 *Richard Montauk, J.D.; How to Get into the Top Law Schools*; noon

3 *Carl Zimmer; Evolution, The Triumph of An Era*; noon

4 *Ralph & Gerald Faris; Living in the Dead Zone: Janis Joplin and Jim Morrison, Understanding Borderline Personality Disorder*; noon

Mark Crispin Miller; The Bush Dyslexicon, Observations of a National Disorder; 2 p.m.

9 *Karen Quinones Miller; Satin Doll*; noon.

11 *Slim Lambricht; The Just Us Girls*; noon.

15 *Pat Croce; 110%: 110 Strategies for Feeling Great Every Day; time TBA*.

18 *Jennifer Egan; Look at Me; time TBA*.

25 *Solomon Jones; Pipe Dreams*; noon

30 *The Etiquette Girls; Things You*

Need to Know; noon
Wendy Kopp; One Day All Children; 2 p.m.

Kelly Writers House
3805 Locust Walk. Info.: (215) 573-WRIT, wh@english.upenn.edu or www.english.upenn.edu/~wh.

1 *Live at the Writers House*; a one-hour word and music radio show taping; 8 p.m. *Airs October 7, 11 p.m. on WXPN, 88.5 FM*.

10 *Speakeasy: Poetry, Prose, and Anything Goes*; an open mic performance night. 8 p.m. *Also October 24*.

11 *Night of Flamenco*; group reading, poetry, music and dance; 7 p.m. *See Special Events* (Greenfield Intercultural Center, La Casa Latina).

17 *PhillyTalks-19*; reading and discussion featuring Allen Fisher, London, England; and Karen Mac Cormack, Toronto, Canada; hosted by Matthew Hart, English; 6 p.m.

19 *Suppose An Eyes: A Poetry Working Group*; 4 p.m.; room 209.

20 *Laughing Hermit Series*; 4 p.m.

24 *Poet Jay Wright*; hosted by the Creative Writing program; 5 p.m.

25 *Material Poetics: Book Art & Printed Matter*; reading and symposium

Manuck! Manuck!; share and discuss fiction written by members; 7:30 p.m.; room 209. Info.: follinge@sas.upenn.edu. *Also October 17 & 31*.

4 *Philosophy Circle*; 8 p.m.; room 209. Info.: ganders@wharton.upenn.edu. *Also October 11, 18 & 25*.

5 *Suppose An Eyes: A Poetry Working Group*; 4 p.m.; room 209. *Also October 19*.

9 *Nonfiction Writers Workshop*; for non-fiction writers who have been published or are serious about trying; 5:30-7 p.m.; room 202. Info.: auersylvia@aol.com. *Also October 23 & 30*.

Workshop and conversation with John Timpane; author of *Poetry for Dummies*, and Commentary Page editor for the *Philadelphia Inquirer* 6 p.m.

15 *Pew Fellowships in the Arts: Information Meeting*; 2001 guidelines and applications 3-4:30 p.m.

16 *Talking Film / Hollywood Club: James Sadwith Visits*; Jim Sadwith, writer, director and producer of television drama for 20 years; his work was nominated for over 21 Emmy Awards and Golden Globes; 7 p.m.

18 *Writing/Translating Poetry*; talk will be in English; Jacques Darras, University of Picardie—Paris, France, on his translation of British and American poetry with specific examples; with Bob Perelman and Jean-Michel Rabate, English; 4-6 p.m. (French Institute).

23 *Theorizing in Particular: Approaches to Cultural Interpretation*; presents Juliet Flower MacCannell, UC-Berkeley; 6:30 p.m.; Arts Café.

29 *Theorizing in Particular: Approaches to Cultural Interpretation*; presents Rich Doyle, Penn State; 6:30 p.m.; Arts Café. Info.: adlevy@english.upenn.edu.

Morris Arboretum
Info.: (215) 247-5777, ext. 156 or 125; or www.upenn.edu/morris.

3 *Mapping and Site Analysis*; 7-9 p.m.; \$88; \$80/members. *Also October, 10, 17 & 24*.

4 *Landscape Design Studio*; 7-9:30 p.m.; \$180; \$162/members (cost includes a textbook on home landscape design). *Also October 11, 18 & 25 and November 1, 8 & 15*.

6 *Bewitching Begonias*; 10 a.m.-noon; \$22; \$20/members.

9 *Fall Highlights of the Morris Arboretum's Plant Collections*; slide lecture followed by a plant walk; 10 a.m.-12:45 p.m.; \$90; \$80/members. *Also October 23 and November 6*.

Landscapeping for Birds and Butterflies with Native Plants; 7-8:30 p.m.; \$22; \$20/members.

10 *Herbal Alternatives to Winter Woes*; 7-9 p.m.; \$27; \$25/members.

15 *Healing Plants: Discover Homeopathy*; 7-9 p.m.; \$22; \$20/members.

20 *Tree Identification and Appreciation: Conifers*; three-session course; 10 a.m.-12:30 p.m. \$82; \$75/members. *Also October 27 and November 3*.

22 *Healing Plants for Women's Health*; Chinese herbology remedies; 7-9 p.m.; \$22; \$20/members.

24 *Woody Plant Propagation*; 7-9 p.m.; \$55; \$50/members. *Also October 27, 10 a.m.-12:30 p.m*.

25 *Pruning Deciduous Trees*; morning: lecture and demonstration; afternoon: supervised, hands-on pruning. 9 a.m.-4 p.m.; \$45/morning only; 9 a.m.-12 noon; 85/all day: including lunch. *Rain date: October 26*.

Pruning for the Homeowner; 7-9 p.m.; \$50; \$45 /members. *Also October 27, 10 a.m.-12:30 p.m*.

27 *Herbal First Aid*; 10:30 a.m.-2:30 p.m.; \$44; \$40/members.

30 *Practical Rigging for Arborists*; three-day workshop; bring a hard hat with chin strap; 9 a.m.-4 p.m.; \$230/includes lunch. *Also October 31 and November 1*.

Dried Flower Arranging; 7-9:30 p.m.; \$38; \$34/members.

Online Computer Classes
Info: 800-288-8221, www.tts.isc.upenn.edu.

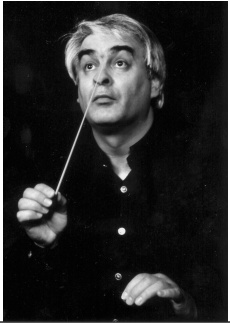

9 *JavaScript Fundamentals*; 6-9:30 p.m.; Tuesdays & Thursdays; \$855. *Through October 23*.

15 *Fireworks Introduction*; 9 a.m.-4:30 p.m.; Mondays & Wednesdays;\$570. *Through October 24*.

As part of the 2001-2001 PENNPresents at Annenberg Center, Wynton Marsalis (at right), winner of the Pulitzer Prize for Music, brings his septet to Zellerbach Theatre on October 24.



Musical Notes this Month



Marcus Roberts, (middle) jazz pianist and composer performs an original suite of music with his trio on October 26.

Conductor and music director Valery Polyansky (right) leads the Russian State Symphony Orchestra in a festival of Russian piano music on October 27.

See Music, reverse.

October

AT PENN