

UNIVERSITY of PENNSYLVANIA *Almanac*

Tuesday,
September 25, 2001
Volume 48 Number 5
www.upenn.edu/almanac/

Annenberg History Chair: Dr. Katz

SAS Dean Samuel H. Preston has announced that Dr. Michael Katz, Sheldon and Lucy Hackney Professor of History, has been named to an endowed chair, the Walter H. and Leonore C. Annenberg Professorship in History.

Dr. Katz received a B.A. from Harvard University in 1961, an M.A.T. from Harvard in 1962, and an Ed.D. from Harvard in 1966. He came to Penn as a full professor in 1978 and has previously held the Stanley I. Sheerr Term Chair in History. His teaching and research focus on American social history, including the history of education, the history of urban social and family structure, and the history of poverty and social welfare.

Before coming to Penn, he was a history professor at York University. He also was a professor at the Ontario Institute for Studies in Education and the University of Toronto. He has been a visiting associate professor at Harvard's Graduate School of Education and a visiting scholar at the Woodrow Wilson Center, the Shelby Cullom Davis Center at Princeton, the Russell Sage Foundation, and the Institute for Advanced Study. At Penn, he has served as the director of the Urban Studies Program and has chaired the history department.

He has published extensively and has been nominated for a Pulitzer Prize and the Robert F. Kennedy Book Award. His most recent book is *The Price of Citizenship: Redefining the American Welfare State* (Metropolitan/Holt, 2001).

He is the recipient of a Guggenheim fellowship, a fellowship from the Open Society Institute and research grants from the National Endowment for the Humanities, the National Institute on Education, and a number of foundations, and he has been elected to the National Academy of Education and the National Academy of Social Insurance. In 1999, he was selected as a Senior Scholar by the Spencer Foundation, a lifetime achievement award.

The Walter H. Annenberg Professorship in History was created by the Hon. Walter and the Hon. Leonore Annenberg. The Annenbergs, who are both emeritus trustees, are lifelong supporters of Penn and patrons of education across the United States. They have endowed many chairs in the School of Arts and Sciences and made countless contributions to the University, including the founding of the Annenberg School for Communication in 1958.

Merriam Chair in Biology: Dr. Roos

SAS Dean Samuel H. Preston has also announced that Dr. David S. Roos, director of the Genomics Institute, has been appointed to the Merriam Professorship in Biology, an endowed chair. Dr. Roos has been a member of the biology faculty since 1989. He is also affiliated with the schools of Medicine, Veterinary Medicine, and Engineering and Applied Sciences. Dr. Roos received an A.B. from Harvard University in 1979, a Ph.D. from The Rockefeller University in 1984, and conducted post-doctoral research at Stanford University prior to joining the Penn faculty.

Dr. Roos' research employs modern techniques in cell biology and molecular genetics to investigate host-pathogen interactions. In particular, the Roos laboratory studies protozoan parasites, including *Toxoplasma*—a leading cause of death in AIDS patients and a source of congenital neurological abnormalities—and *Plasmodium*, which causes malaria, one of the world's leading killers. Recent work has focused on the use of computational approaches to integrate large-scale genomic data sets with experimental analysis in the laboratory.

Dr. Roos also has been actively engaged in educational activities at Penn, including development of the Introductory Biology curriculum, the Computational Biology Training Program, the Biotechnology Masters Program, and a new Graduate Group in Genomics and Computational Biology.

Dr. Roos has published extensively and lectures widely, both in this country and throughout the world. He is a member of several editorial boards, scientific review panels, and professional societies, and serves as a regular advisor to the pharmaceutical industry and many international groups, including the World Health Organization. He is the recipient of numerous research grants and has received awards from the National Science Foundation (Presidential Young Investigator), the Burroughs Wellcome Fund (Scholar Award), and the National Institutes of Health (Merit Award).

The Merriam Chair in Biology was created in 2000 through the bequest of the late John W. Merriam. Born in Chicago in 1907, Mr. Merriam received his bachelor's and master's degrees from the Wharton School and taught economics at Penn in 1934. He began his entrepreneurial career during the Depression when he developed his first apartment complex and later became one of the Delaware Valley's leading real estate developers. Mr. Merriam was also very active in the Philadelphia arts community and served as director of the Philadelphia College for the Performing Arts and the Pennsylvania Academy of Fine Arts.



Michael Katz



David Roos

In the Aftermath of the Attacks

In the two weeks since the terrorist attacks, the Penn community has gathered together across the campus in groups large and small—for vigils on College Green and at the Wharton School, a University-wide service of remembrance at Irvine, and a symposium on terrorism that was broadcast on UTV, WXPB and WHYY.

The University established a new website for such emergency information: www.upenn.edu/emergencyinfosite/ which can be accessed from Penn's homepage, www.upenn.edu as well as the Between Issues section on *Almanac's* homepage, www.upenn.edu/almanac.

Emergency information and advisories have been posted to numerous Penn websites, the following is a sampling of these resources.

The Wharton School has its Candle Lighting ceremony online in text and as a video, at www.wharton.upenn.edu/ along with a message from Dean Patrick Harker and a page with information about Wharton alumni, family and friends.

The Civic House website, www.upenn.edu/civichouse/ has information on donating blood and other ways to be of service, suggestions from CHOP to help children cope with this tragedy, and lists of survivors and victims.

The Office of International Programs, has posted a Q & A in the wake of the September 11 tragedies on "Information for Parents of Penn Students Studying Abroad" www.upenn.edu/oip/sa/emergency/index.html.

There is travel news, including recently updated information on security directives, airport and airline operations, available from the Comp-trollers' website, www.finance.upenn.edu/comptroller/travel/index.shtml.

The University's Alumni Relations website, www.alumni.upenn.edu/ has a message from President Judith Rodin followed by several resources to help members of the Penn community connect with one another.

The Division of Human Resources has added information to its website, www.hr.upenn.edu/ on Dealing with Trauma for Children and Teenagers and Common Reactions to Traumatic Incidents.

Humanities Forum: Time

This year the Penn Humanities Forum will consider *Time* in its many dimensions. With six scheduled events starting today and running through December 14, *Time* will be explored through lectures, exhibitions, movies, musical programs, and literary readings. For a full listing of events visit the Penn Humanities Forum website at <http://humanities.sas.upenn.edu/>.

Today at 5:30 p.m., J.T. Fraser, founder of the International Society for the Study of Time, will speak at 200 College Hall.

IN THIS ISSUE

- 2 On the Trustees' Stated Meeting; Employee Resource Fair; Operation Brotherly Love
- 3 Alzheimers Conference; Self Defense Class; Update; CrimeStats; Classifieds
- 4 Military Leave Policy

Pullout: October AT PENN

On the September 20 Meeting of the Executive Committee of the Trustees

As Penn—and the nation—attempted to return to its usual business, the Executive Committee of the University Trustees convened last Thursday—for a meeting that was to have been the previous week. President Judith Rodin commented on the appointments of the new deans of Medicine and Nursing, the forum on terrorism, interim dean of Social Work, the recent opening of the new University-assisted Prek-8 public school and the new Graduate Center which will have its official opening next month.

Dr. Rodin then presented five resolutions—the first two were resolutions of appreciation, one for Peter C. Erichsen and the other for Dr. Ira M. Schwartz. The next three were resolutions on appointments: Dr. Arthur Rubenstein as EVP of UPHS, Dean of the School of Medicine and to the UPHS Trustee Board; Robin H. Beck as Vice President for ISC; and Wendy S. White as Vice President and General Counsel for Penn and UPHS. All were approved.

In the Academic Report, Provost Robert Barchi said that the Disability Report, completed this summer (*Almanac* September 4) has led to the creation of an office and integrated services in one place with the committee's recommendations accepted in full. He also spoke of the completion of the Graduate School of Education's building renovations, the opening of Wharton West, and the U.S.-Taiwan Biotechnology Conference held on September 10.

In the Financial Report, Craig Carnoroli reported that the University's total net assets were \$4.613 billion, an increase of 5% or \$219.2 million since June 30, 2000. This was primarily the result of a net gain on investments of \$19.8 million and non-operating contributions of \$178.7 million.

Dr. Arthur Rubenstein reported that of the 148 new students in the School of Medicine, 43% are women and 13% are minorities. He also noted several advances in research including those concerning diabetes, Alzheimer's disease and cancer. Dr. Rubenstein mentioned that Dr. John Pryor, a member of the Trauma and Surgical Critical Care Division at UPHS, went to volunteer at Ground Zero in New York.

Significant capital expenditures incurred during FY 2001 included \$34.2 million for Huntsman Hall; \$20.1 million for Hamilton Square; \$18.6 million for Civic Center; \$18.5 million for Quadrangle renovations; \$8.5 million for Johnson Pavilion; \$8.1 million for Perelman Quad; \$6.7 million for University Museum and \$5.7 million for Graduate School of Education.

Mr. John Clark, on behalf of the Budget and Finance Committee, presented two resolutions, both of which were accepted. The first resolution is for the design and construction of improvements to the Class of 1949 (38th Street) Bridge to create the "Generational Walk" and an area commemorating "125 Years of Women at Penn" estimated to cost \$1.3 million. As a result of the fundraising response that has been generated for this special commemorative project, Penn anticipates being able to fund the cost entirely from gift proceeds received over the next five years. The second resolution authorizes the reallocation of capital budget authorization for UPHS to fund a cardiac catheterization lab project instead of a short procedure unit.

Mr. James Riepe presented four resolutions concerning appointments to oversee and other boards: John J. King and Judith N. Vredenburg were appointed to the board of overseers of SAS;

Judith Roth Berkowitz was reappointed as chair and Lawrence C. Nussdorf, was appointed as vice chair of the board of overseers of GSE; Michell I. Quain was reappointed as chair of the board of overseers of SEAS; and Katherine Sachs was reappointed as chair of the board of overseers of the ICA.

The meeting concluded with a moment of silence for the victims of September 11.

Operation Brotherly Love

Dear Friends and Co-Workers:

During this time of turmoil in the United States, people across the country and indeed across the world, are banning together to express their sympathy and horror. While many of our thoughts and prayers are with the victims and their families, there are venues available for those who wish to give a little more of themselves.

Student Financial Services is sponsoring Operation Brotherly Love. We feel so strongly and deeply about giving of ourselves to help our neighbors affected and devastated by this senseless tragedy. If you are interested in contributing money to this effort, Room 212 Franklin will be acting as a central location to collect donations. Please stop by with either your cash donation or check made payable to the American Red Cross Disaster Relief Fund, and it will be forwarded to the Red Cross. For those wishing not to give cash, the Salvation Army & Red Cross are collecting supplies (see list below) for the relief effort. These items will be collected in Room 212 Franklin Building & forwarded to the Salvation Army and/or Red Cross.

We cannot undervalue the importance of this effort nor the significance of individual contributions—no matter how small. New York and Washington, D.C. are only a few hours removed from Philadelphia and many local families and students have been affected by this tragedy.

Help us unite to assist our neighbors as they cope with this very difficult time. Please stop by with your donations or if you have questions, call Yvonne at (215) 898-9955 or (215) 898-7234.

You and others in your department/s have always been generous in other worthy causes we assisted such as the Midwest Floods and especially the Gulf War. Please join Student Financial Services now in assisting those who are in desperate need of our help. Please pass this message on to your friends, co-workers, colleagues, and other departments or areas near you.

— Yvonne Giorgio, SFS

Urgently Needed Items:

Aspirin/Tylenol	Dust/Surgical Masks
Respirator Masks	Ace Bandages
Saline Solution	Medical Tape
Gauze Pads	Alcohol Swabs
Antibiotic Cream	Foot Powder
Non-drowsy Allergy Med.	Neosporin
Medical gloves	Energy bars
Gatorade	Batteries
Garbage bags	Can openers
Waterproof tubs/coolers	2 way radios
Bottled water	Long-sleeve shirts
T-shirts	Pants
Steel-toed boots	Work gloves
Sanitary napkins	Flap shovels
Crowbars	Pick-axes
Tents	Handi-wipes
Sunscreen	Hard hats
Toiletries	Blankets
Towels	Safety goggles
Plastic tarps	Cotton & wool socks
Rope	Dog food
Undergarments for men & women	Dog boots

Employee Resource Fair: September 28

An Employee Resource Fair will take place in Wynn Commons, Perelman Quad, on Friday September 28, from 11 a.m.-2 p.m. (Rain Location: Hall of Flags, Houston Hall). The A-3 Assembly & Penn Professional Staff Assembly (PPSA) are joining together to present the Employee Resource Fair in order to increase awareness and provide information on the variety of services and programs available to all Penn employees. Over 20 offices and Resource Centers will be present to provide information and answer questions.

Participants include:

- African American Resource Center
- Almanac*
- Campus Dining Services
- Center for Community Partnerships
- College of General Studies
- Conference Services
- Creative Communications
- Division of Business Services
- Division of Public Safety—Special Services
- Human Resources (Benefits, Quality of WorkLife, & Recruitment and Learning and Education)
- Institute of Contemporary Art
- Lesbian, Gay, Bisexual Transgender Center
- Office of Affirmative Action and Equal Opportunity Programs
- Office of Environmental Health & Radiation Safety
- Office of Off-Campus Living
- University of Pennsylvania Library
- Perelman Quadrangle
- Penn Computer Connection
- Penn Women's Center
- Recreation Department
- Student Health Service
- The Penn Current*
- University Museum of Archaeology and Anthropology

Coupon for free slice of pizza for first 1,000 employees (donated by Campus Dining Services) Free Raffle with over 15 prizes! Please bring PENNCARD for Raffle and Pizza Coupon.

Raffle items include:

- General raffle prizes of Coca-Cola goodie bags
- Five rolled Penn t-shirts from Penn Bookstore
- Lunch for two from Shula's 2
- Dinner gift certificate from La Terrasse
- A lunch platter for 20 from Bon Appetite
- Dinner for two at the Ivy Grill
- A gift basket from Douglas cosmetics, with a gift certificate for a free make-over
- Two "Lunch for Two" certificates from the White Dog Cafe
- One free room night from Sheraton University City
- Grand Prize:** Palm M-100 (donated by Penn Computer Connection)

For more information contact: Troy Odom, A-3 Assembly Chair, at (215) 898-6993; troyo@pobox.upenn.edu or Adam Sherr, PPSA Chair at (215) 898-6687; sherr@nursing.upenn.edu or visit www.upenn.edu/a-3/ResourceFair.html.

Update

SEPTEMBER AT PENN

MUSIC

30 *Poor Old Horse & The Freedom Sound*; Poor Old Horse performs traditional songs of England and America while Freedom Sound performs a combination of a cappella rhythm and blues, gospel and jazz; 7:30 p.m.; St. Mary's Church; tickets \$10/\$13 door (Cherry Tree Music Co-op).


READINGS/SIGNING

27 *Thicker Than Blood: How Racial Statistics Lie*; Tukufu Zuberi, author; 5 p.m.; Kelly Writers House (Afro-American Studies Program).

TALKS

28 *The Sacred Heart of Jesus in Eighteenth-Century Rome*; Jon Seydl, history of art; 3 p.m.; Rich Seminar Room, Jaffe Bldg. (History of Art).

Deadlines: The deadline for the weekly update is each Monday for the following week's issue; for the November At Penn calendar it is *October 16*. See www.upenn.edu/almanac/calendar/caldead.html.



Are you responsible for some of the 149,000 hits to *Almanac's* website last week? **Get on board Express Almanac:** To register, send an e-mail message with "subscribe" as the Subject to almanac@pobox.upenn.edu and include your name, e-mail address, and mailing address. —Ed.

Help Wanted: Work-Study Students

Positions available at *Almanac*. Duties include desktop publishing, web design and maintenance, proofreading, research. Send e-mail to morrisma@pobox.upenn.edu.

The University of Pennsylvania Police Department Community Crime Report

About the Crime Report: Below are all Crimes Against Persons and Crimes Against Society from the campus report for **September 10 through September 16, 2001**. Also reported were **41 Crimes Against Property**: (including **25 thefts**, **1 attempted theft**, **1 retail theft**, **7 burglaries**, **5 frauds** and **2 vandalisms**). Full reports on the Web (www.upenn.edu/almanac/v48/n05/crimes.html). Prior weeks' reports are also on-line.—Ed.

This summary is prepared by the Division of Public Safety and in cludes all criminal incidents reported and made known to the University Police Department between the dates of **September 10 and September 16, 2001**. The University Police actively patrols from Market Street to Baltimore Avenue and from the Schuylkill River to 43rd Street in conjunction with the Philadelphia Police. In this effort to provide you with a thorough and accurate report on public safety concerns, we hope that your increased awareness will lessen the opportunity for crime. For any concerns or suggestions regarding this report, please call the Division of Public Safety at (215) 898-4482.

9/14/01	6:26 PM	210 S. 40th St	Complainant harassed by ex-roommate
9/15/01	2:53 AM	3915 Pine St	Male urinating in public/arrest
9/15/01	3:08 AM	3901 Locust Walk	Complainant struck in eye
9/15/01	9:16 PM	4000 blk Sansom St	Disorderly Male/arrest
9/16/01	2:57 AM	3924 Spruce St	Male struck in face with bottle/arrest
9/16/01	9:15 AM	3700 Spruce St	Unwanted call received

18th District Report

11 incidents and 2 arrests (including 5 robberies, 4 aggravated assaults and 2 rapes) were reported between **September 10 and September 16, 2001** by the 18th District covering the Schuylkill River to 49th Street and Market Street to Woodland Avenue.

09/10/01	9:59 PM	48th & Spruce	Rape
09/11/01	3:13PM	4200 Woodland	Aggravated Assault
09/12/01	11:48AM	200 S Ithan	Robbery
09/12/01	8:23PM	46th & Market	Robbery
09/13/01	12:15PM	4000 Baltimore	Robbery
09/14/01	9:18AM	4300 Locust	Robbery/Arrest
09/15/01	2:53AM	48th & Locust	Aggravated Assault
09/15/01	3:37PM	48th & Chestnut	Robbery
09/16/01	2:59AM	3900 Spruce	Aggravated Assault/Arrest
09/16/01	4:30AM	4600 Walnut	Rape
09/16/01	1:46PM	38th & Chestnut	Aggravated Assault

Center for Neurodegenerative Disease Research Retreat

The Center for Neurodegenerative Disease Research will hold their 2nd annual retreat, *Emerging Alzheimer's Disease Therapies: Focusing on the Future* on Wednesday, November 7. The event features a full program of speakers presenting current research and advances in Alzheimer's disease therapies. Dr. John Trojanowski, Co-Director of the Center will open the program with introductory comments in the Dunlop Auditorium.

The speakers are: Dr. Ivan Lieberburg, Elan Corporation; Dr. Cynthia Lemere, Harvard Medical School; Dr. Samuel Gandy, NYU Medical School; Dr. Ashley Bush, Harvard Medical School; Dr. Blas Frangione, NYU Medical School; Dr. Martin Citron, Amgen, Incorporated; Dr. Yue-Min Li, Merck & Company; Dr. Sangram S. Sisodia, University of Chicago; Dr. Virginia M.-Y. Lee, Dr. Christopher Clark, and Dr. Jason Karlawish, Penn.

Deadline for Symposium Registration is *October 1*. For information, please call (215) 662-4708 or e-mail viale@mail.med.upenn.edu.

Registration form may be accessed at: www.med.upenn.edu/cndr

Rape Aggression Defense

The Rape Aggression Defense (RAD) Program is being offered by the Penn Police Department. The course is free to Penn women: students, faculty and staff.

The schedule for September is:

- Sept. 25, Oct. 2, 9, 16; 5:30-8:30 p.m.
- Sept. 29, Oct. 6; 9 a.m.-3 p.m.

Additional classes will be held in October; see October At Penn calendar in this issue.

All classes are held at Penn Police Headquarters at 4040 Chestnut St. Please call (215) 898-4481 or e-mail stacey2@pobox.upenn.edu to register.

CLASSIFIEDS—UNIVERSITY

RESEARCH

If you have **hypertension** or hypertension plus stable Type 2 diabetes, please call to learn about exciting upcoming research trials. Most visits take place in the morning. Renumeration varies per study. For information, call Virginia Ford @ (215) 662-2638.

Volunteers Needed for **early menopausal women** bone density research study. The University of Pennsylvania Health System seeks volunteers for a bone density medical research study. If you meet the following description, you might be eligible to participate: female ages 45-55, no menstrual periods for at least 6 months. Volunteers will be compensated for their involvement. Please contact: Helen Peachey at (215) 898-5664.

Do you have high cholesterol? Doctors at Penn are launching a novel new research study looking at two well-known cholesterol lowering agents. The study involves several visits to the Hospital of the University of Pennsylvania. If you have elevated cholesterol levels, are not currently taking any lipid-lowering medications, and think you might be interested in this study, please contact David Berezich at berezich@mail.med.upenn.edu or (215) 662-9040. Compensation is provided.

Are You Post-Menopausal? And Do You Have **High Cholesterol?** If Yes, Are you Worried About your Risk for Heart Disease? Doctors at The University of Pennsylvania are conducting an exciting new study for post-menopausal women with high cholesterol. Participants will receive a painless test called an Ultrafast CT (EBT) scan that will provide information about the amount of calcium buildup in the arteries. Calcium build-up in the arteries is an early feature of atherosclerotic plaque formation. Doctors want to test the effects of cholesterol-lowering drugs, Lipitor or Pravachol, to reduce calcium build-up in the blood vessels of the heart. All participants will receive either Lipitor or Pravachol. Compensation will be provided for time and effort. If you would like to hear more information and see if you qualify for the study, please call Melissa Fair at (215) 662-9056.

CLASSIFIEDS—PERSONAL

HOUSE FOR SALE

For Sale in **Cheltenham Colonial** 4br, 2 1/2 ba., view of park, \$180k. Call 215-540-92078.

THERAPY

Competent psychotherapy: group, family and individual. Please call for an appointment: Shari D. Sobel, Ph.D. (215) 747-0460.

Almanac is not responsible for contents of classified ad material.

To place a classified ad, call (215) 898-5274.



Almanac

Suite 211 Nichols House
3600 Chestnut Street, Philadelphia, PA 19104-6106
Phone: (215) 898-5274 or 5275 FAX: (215) 898-9137
E-Mail: almanac@pobox.upenn.edu
URL: www.upenn.edu/almanac/

The University of Pennsylvania's journal of record, opinion and news is published Tuesdays during the academic year, and as needed during summer and holiday breaks. Its electronic editions on the Internet (accessible through the PennWeb) include HTML and Acrobat versions of the print edition, and interim information may be posted in electronic-only form. Guidelines for readers and contributors are available on request.

EDITOR: Marguerite F. Miller
ASSOCIATE EDITOR: Margaret Ann Morris
ASSISTANT EDITOR: Tina Bejian
STUDENT ASSISTANTS: Clarette Kim; Chris McFall; William Yeoh

ALMANAC ADVISORY BOARD: *For the Faculty Senate*, Martin Pring (*Chair*), Helen Davies, David Hackney, Phoebe Leboy, Mitchell Marcus, Joseph Turow. *For the Administration*, Lori N. Doyle. *For the Staff Assemblies*, Michele Taylor, PPSA; Karen Pinckney, A-3 Assembly; David N. Nelson, Librarians Assembly.

The University of Pennsylvania values diversity and seeks talented students, faculty and staff from diverse backgrounds. The University of Pennsylvania does not discriminate on the basis of race, sex, sexual orientation, religion, color, national or ethnic origin, age, disability, or status as a Vietnam Era Veteran or disabled veteran in the administration of educational policies, programs or activities; admissions policies; scholarship and loan awards; athletic, or other University administered programs or employment. Questions or complaints regarding this policy should be directed to Valerie Hayes, Executive Director, Office of Affirmative Action, 3600 Chestnut Street, 2nd floor, Philadelphia, PA 19104-6106 or (215) 898-6993 (Voice) or (215) 898-7803 (TDD).

In light of the current crisis, the University is publishing its guidelines on military leaves for Penn faculty and staff. The full Military Leave Policy can be accessed via the Division of Human Resources web site at www.hr.upenn.edu/policy/policies/611.asp.

Military Leave Guidelines

Military Leave Guidelines

Excerpts from Policy No. 611, Military Leave

The University grants up to five (5) years of time off without pay for faculty and regular staff members (including staff covered by collective bargaining agreements*) who are called to or volunteer for active military duty in accordance with Federal guidelines. The employee is eligible to use any unused paid time off during the military leave. Also, the employee may use the ten (10) paid work days per fiscal year granted for annual military training or duty, provided that this time has not been used during the current fiscal year.

The employee's University department is committed to return the faculty or staff member to active University status in the same or comparable position, pay grade and salary within the department at the end of the military leave if the employee meets the following conditions:

- The employee is employed in a faculty or regular staff position and would not have been subject to position discontinuation if employment had not been interrupted by military service.
- The employee presents to his/her supervisor, department head or other University designee, a certificate of discharge or release from active duty under honorable conditions.
- The employee notifies the University in writing of his/her intent to return to work within 90 days of discharge from active duty or within one year of discharge if hospitalized after discharge.

During the military leave without pay, there is no accrual of sick or paid time off days. Time while on leave is counted as service credit in determining eligibility for those benefits that are dependent upon length of service. Faculty and staff members can arrange to continue their University medical/dental and life benefits while on leave by contacting the Penn Benefits Center (1-888-736-6236) prior to departure. Faculty and staff who return from military leave and are reemployed with the University are reinstated into their previous health plan, if available, with full coverage.

If you have questions about the Military Leave Policy, call the Division of Human Resources, Staff and Labor Relations at (215) 898-6093 or refer to the policy online.

* University staff members who are covered by collective bargaining agreements should refer to the appropriate contract article for leaves without pay.

Steps to Follow for Faculty or Regular Staff Members Called To or Volunteering for Active Military Duty:

- Provide supervisor or department head with a copy of the military orders and determine last day of work.
- Discuss with supervisor or department head whether any paid time off or annual military training leave will be used during the military leave.
- Give your supervisor or department head an address to which any essential mail should be forwarded.
- Contact the Penn Benefits Center at 1-888-736-6236 to discuss University benefits continuation.
- Contact Division of Human Resources, Staff and Labor Relations, at (215) 898-6093 for any questions about the Military Leave Policy.
- Notify, in writing, your supervisor, department head or other designated University official of your intent to return to work within 90 days of honorable discharge from active military service or within one year from active military service if hospitalized after discharge. You should include in this correspondence a copy of your certification of discharge or release.

Steps to Follow for Supervisors or Department Heads if Faculty or Regular Staff Members Give Notice of Being Called To or Volunteering for Active Military Duty:

- Obtain a copy of the military orders.
- Notify the faculty or regular staff member that they are eligible for military leave up to five years and determine the last day of work.
- Discuss with the faculty or staff member whether any paid time off or annual military training leave will be used during the military leave. Determine and communicate to individual the last day in pay status.
- Advise individual to contact the Penn Benefits Center (1-888-736-6236) to discuss benefits continuation.
- Get an address from the faculty or staff member where s/he wants any essential mail sent. Ensure that the appropriate changes are made to the faculty or staff member's record in the Personnel Payroll System (e.g., address, employment status, reason for leave, effective date of leave).
- If a temporary replacement is needed for a regular staff member on military leave, contact the Division of Human Resources, Recruitment and Staffing, at (215) 898-1303 or the respective school/center contact to discuss hiring procedures. Arrangements for faculty members are handled by the Provost's Staff Conference.

Contact Division of Human Resources, Staff and Labor Relations, at (215) 898-6093 for any questions about the Military Leave Policy.

—Division of Human Resources

Military Leave Guidelines for Students

A student who has not received full academic credit for the term and who is called to service through enrollment in a military reserve unit, or through enlistment in the military service, shall be refunded full tuition and general fee, provided a request, substantiated by the proper evidence, is filed with the dean of the school in which he or she is registered.

—Office of the Deputy Provost

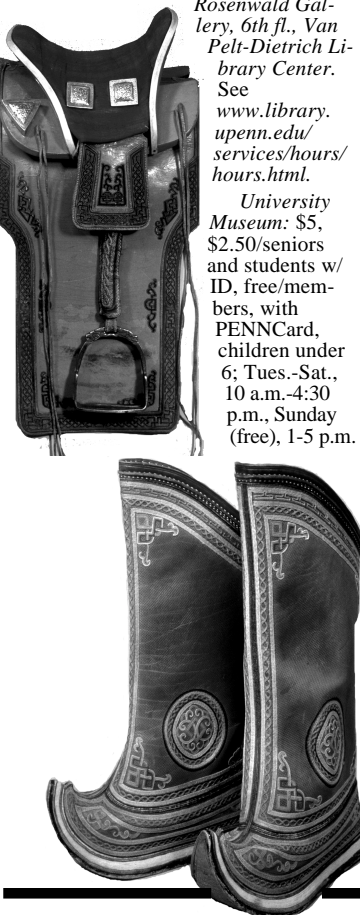
- ACADEMIC CALENDAR**
- 5** Family Weekend. Through October 7.
- 12** Drop Period Ends.
Fall Term Break. Through October 14.
- 29** Advance Registration, Spring Term. Through November 11.

- CHILDREN'S ACTIVITIES**
- 2** Story Hour; 11 a.m.; Penn Bookstore. Also October 9, 16, 23, & 30 (Bookstore).
- 6** Children's Workshop Fasten-ating" Buttons! Dancing Blankets of the Northwest Coast Indians; an Anthropologists in the Making program; ages 8-12 explore Raven's Journey: The World of Alaska's Native People exhibition; design a button blanket in a workshop. 10 a.m.-noon; University Museum; \$5/materials fee. Pre-registration required: (215) 898-4015 (Museum).

- Morris Arboretum**
Info.: (215) 247-5777, ext. 156 or 125; or www.upenn.edu/morris.
- 13** Orienteering at the Arboretum; ages 8 and up; 10 a.m.- noon; \$8; \$6/ members.
- 21** The Truth About Bats; ages 8 and up; learn where and when bats can be seen in our area and about their many beneficial characteristics; 1-3 p.m.; \$10; \$8/members.
- 27** KYW Halloween Spook-tacular; ghosts and goblins of all ages can join in a costume parade through the garden and enjoy the music and "not-so-scary" stories of local entertainer Ed Stivender; discount on admission with costumes; 1-3 p.m. (Arboretum; KYW).

- CONFERENCES**
- 6** Egypt Revealed: Reports from the 2001 Excavation Season; world-renowned Egyptologists report on their most recent excavation work.Including Drs. Zahi Hawass, Kent Weeks, Mark Lehner, Salima Ikram, and UPM's Egyptian Section Curator-in-Charge David Silverman. Find out how recent discoveries at The Valley of the Golden Mummies, The Lost Tombs of the Sons of Ramesses II, The Village of the Pyramid Workers, and The Royal Cemetery of King Teti are changing what we know and think about the ancient Egyptians. 9 a.m.; \$195. Info./registration: (773) 549-2852 or www.sevenwonderstravel.com. Also October 7 (Seven Wonders Travel; University Museum).
- 20** Substance Abuse; lecture series by senior clinicians from the Center for Cognitive Therapy; 9 a.m.-noon; \$65; info.: (215) 898-4106 (Center for Cognitive Therapy).

- EXHIBITS**
- Admission Donations and Hours**
Arthur Ross Gallery, Fisher Fine Arts Library: free, Tues.-Fri., 10 a.m.-5 p.m., Sat. & Sun., noon-5 p.m.
Burrison Gallery, Faculty Club, Inn at Penn: free, Mon.-Fri, 8 a.m.-6 p.m.
Charles Addams Gallery: free, Mon.-Fri., 9 a.m.-5 p.m.
Esther Klein Gallery, 3600 Market: free, Mon.-Sat., 9 a.m.-5 p.m.
Institute of Contemporary Art: \$3, \$2/students, artists, seniors, free/members, children under 12, with PENNCard, and on Sundays 11 a.m.-1 p.m.; open: Wed.-Fri., noon-8 p.m.; Sat. & Sun., 11 a.m.-5 p.m.
Kelly Writers House, 3805 Locust Walk: See www.english.upenn.edu/~wh/.
Kroiz Gallery, Fisher Fine Arts Bldg., 220 South 34th St.: Mon-Fri., 10 a.m.-5 p.m.
Morris Arboretum: \$6, \$5/seniors, \$4/students, free with PENNCard, children under 6; Mon.-Fri., 10 a.m.-4 p.m.; Wed. & Thurs. 10 a.m.-8 p.m.; Sat. & Sun., 10 a.m.-5 p.m.



Rosenwald Gallery, 6th fl., Van Pelt-Dietrich Library Center. See www.library.upenn.edu/services/hours/hours.html.
University Museum: \$5, \$2.50/seniors and students w/ ID, free/members, with PENNCard, children under 6; Tues.-Sat., 10 a.m.-4:30 p.m., Sunday (free), 1-5 p.m.

- Upcoming**
- 1** Hidden in Plain Sight: Musical Treasures in the Penn Library; opening reception: November 9. Kamin Gallery, 1st fl., Van Pelt-Dietrich Library. Through December 31.
- 2** Zola and the Dreyfus Affair: Intellectuals and the Struggle for Social Justice; opening reception: 5:30-7:30 p.m.; with presentations by Lorraine Beitler; Martine Le Blond-Zola, great-granddaughter of Emile Zola. Rosenwald Gallery, 6th fl., Van-Pelt Library. Through December 3 (Beitler Family Foundation; Penn Library).
- 16** Fine Arts Drawing Show; features representational, abstract and conceptual work of graduate and undergraduate fine arts students. Charles Addams Gallery (Fine Arts).
- 20** Modern Mongolia: Reclaiming Genghis Khan; features Mongolian cultural treasures from the National Museum of Mongolian History, Ulaanbaatar, Mongolia. Life-size dioramas, photographs, films reconstruct 20th c. Mongolian life. Opening reception: 11 a.m.-4 p.m. 2nd fl., Dietrich Gallery, University Museum. Through July 2002. See Special Events.

- Now**
- Gerard DiFalco: Retrospective 1988-2001— Madrid Dreams, Strega Myths; art work in mixed media: oil, watercolor and acrylic; vibrant, surreal cityscapes capped on both ends by the memorials to two Cuban artists: poet Nelson Blanco and pianist Antonio Carbonel. Kelly Writers House Art Gallery. Through October 6.
Undergraduate Faculty Exhibition; showcase of undergraduate fine arts faculty work. Charles Addams Gallery. Through September 30 (GSFA).
- Garden Railway; designed by landscape architect Paul Busse; large-gauge model trains wind their way through a garden of models of 34 historic Philadelphia areas buildings including Independence Hall. New this year—Great Lighthouses; display uses natural materials to construct the buildings. Through October 8.
- Tremain Smith: In the Presence of Spirits; West Philadelphia artist's abstract works incorporate collage, found objects, and wax. Esther Klein Art Gallery. Through November 2.
Rudi Gernreich: Fashion Will Go Out of Fashion; best known for the "monokini" topless swimsuit and credited with liberating women from clothes that constrained the body. Pieces from collections in LA NY, Philadelphia and private collectors and dealers. ICA. Through November 11.
- Travels in the Labyrinth—Mexican Art in the Pollak Collection; works by 46 Mexican artists born between 1871-1940; Arthur Ross Gallery. Through December 9 (Provost's Spotlight Series).

- Ongoing**
- Ancient Greek World; Canaan & Ancient Israel; Living in Balance: Universe of the Hopi, Zuni, Navajo & Apache; Ancient Mesopotamia: Royal Tombs of Ur; The Egyptian Mummy: Secrets & Science; Raven's Journey: World of Alaska's Native People; Buddhism: History & Diversity of a Great Tradition; University Museum.
Healing Plants: Medicine Across Time and Cultures; Morris Arboretum.
- University Museum Tours**
Meet at the main entrance; 1:30 p.m. Free with Museum admission donation. Info: www.upenn.edu/museum.
- 6** Ancient Egypt. Also October 28.
- 13** Mesoamerica.
- 14** The Classical World.
- 20** Modern Mongolia. Also October 21.
- 27** China.

Museum's Mongolian Treasures
Below, from left to right: Classic saddle for everyday use; Halh woman's hand-embroidered leather boots; Halh man's summer deel and vest, early 20th century; part of a married Halh woman's headdress from the early 20th century; a Halh married woman's summer deel and long vest from the early 20th century. See Exhibits and Special Events.



Treat Yourself to Dance
Hubbard Street Dance Chicago are sexy, energized dancers with slinky shifts and lots of pizzazz. This year, the troupe returns to Annenberg with a new program featuring Ohad Naharin's "Minus 16."
See On Stage.

- FILMS**
- 13** Storm Over Asia; 1928 silent film; V.I. Pudovkin, director; accompanied by live music by Yat-Kha; 8 p.m.; International House; \$15 (International House).
- 22** Big; starring Tom Hanks; 4 p.m.; Film Viewing Center, 4th fl, Van Pelt-Dietrich Library Center. Also October 23, 6 p.m. (Van Pelt-Deitrich Library).
- Dave; starring Kevin Kline and Sigourney Weaver; 6 p.m.; Film Viewing Center, 4th fl, Van Pelt-Dietrich Library Center. Also October 23, 4 p.m. (Van Pelt-Dietrich Library).
- 25** 1996 Was a Good Year For Tourism; part of The Other Israel: Documentary Film Series; 7 p.m.; Carolyn Hoff-Lynch Rm., Chemistry Bldg. (Jewish Studies Program).
- MEETINGS**
- 10** A-3 General Assembly; noon-1 p.m.; Terrace Room, Logan Hall.
- 17** University Council; 4-6 p.m.; Bodek Lounge, Houston Hall. Info.: (215) 898-7005.

- MUSIC**
- 4** Arpeggio Jazz & Music Ensemble; 5-7 p.m.; 36th St. Plaza. Also October 11, 18 & 25 (Penn Bookstore).
- 7** Steve Gillette & Cindy Mangsen; folk singer-songwriters; 7:30 p.m.; St. Mary's Church; \$12/advance; \$15/door (St. Mary's Church).
- 11** Songwriter's Round Robin; singer-songwriter Gina Scipione with others; 8-10 p.m.; Philadelphia Cathedral Chapel; \$5 (Philadelphia Cathedral).
- 28** Paddy Keenan; Irish traditional music; 7:30 p.m.; St. Mary's Church; \$13/advance; \$16/door (Cherry Tree Music Co-op).

October

AT PENN



Whenever there is more than meets the eye, see our web site, www.upenn.edu/almanac/.

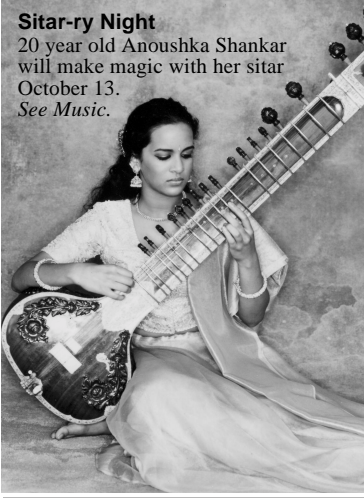


- Penn Presents**
8 p.m.; Info./tickets (215) 898-6701 or www.PENNPresents.org.
- 13** Anoushka Shankar; sitar player and daughter of Ravi Shankar, sitar virtuoso and composer; with Tanmoy Bose and Bokram Ghosh, tanpura players. Zellerbach Theatre, Annenberg Center; \$29; \$23; \$19 (WYBE).
- 24** Wynton Marsalis Septet; featuring Jazz trumpeter Wynton Marsalis; Herlin Riley, drums; Rodney Whitaker, bass; Wess Anderson, reeds; Victor Goines, reeds; Wycliffe Gordon, trombone; Zellerbach Theatre, Annenberg Center; \$49; \$45; \$37 (WRTI-FM; Inn at Penn).
- 26** Marcus Roberts: Rags to Rhythm; jazz pianist and composer performs with his trio; Zellerbach Theatre, Annenberg Center; \$34; \$29; \$24. (WRTI-FM).
- 27** Russian State Symphony Orchestra; Valery Polyansky, conductor; Valentina Listsa, Fazil Say, piano soloists; 8 p.m.; Irvine Auditorium; \$40; \$35; \$30 (WYBE).
- ON STAGE**
- Penn Presents**
7:30 p.m., Info.: (215) 898-6701 or www.PENNPresents.org.
- 18** Hubbard Street Dance Chicago; featuring a new program by Ohad Naharin including "Minus 16" an ensemble piece set to traditional music, techno and hits of Dean Martin; Zellerbach Theatre, Annenberg Center; \$35; \$33; \$31. Also October 19, 8 p.m.; and October 20, 2 & 8 p.m.
- 23** The Perks Dance Music Theatre; under the direction of Rebecca Stenn, Perks Dance Music Theatre brings athletic dance styles to the stage; Prince Theatre, Annenberg Center; \$28. Also October 24 & 25, 7:30 p.m.

- RELIGION**
- 25** Orthodox Vespers for the Feast of St. Demetrios of Thessalonika; 6 p.m.; St. Bede Chapel, Newman Hall (Orthodox Christian Fellowship at Penn).
- SPECIAL EVENTS**
- 3** Faculty Club Open House; 4-6 p.m.; Faculty Club, Inn at Penn (Faculty Club).
- 4** SPEC Crafts Fair; 10 a.m.-6 p.m.; Locust Walk. Info.: spec@dolphin.upenn.edu. Also October 5 (SPEC).
- 7** Fall Family Festival; make your own scarecrow (\$10); paint a pumpkin (\$1.50-\$2); sample varieties of apples (\$0.25); entertainment by the Mystery Juggling Company; a cappella group, the Philadelphia Revels; 11 a.m.- 3 p.m.; Morris Arboretum. Info.: (215) 247-5777, ext. 156 or 125 (Arboretum).
- 11** Night of the Flamenco; part of Hispanic Heritage Month; readings of Southern Spanish & Andalusian poetry connected to flamenco; live flamenco performance by Fiesta Flamenco; 7 p.m.; Writers House. Info.: wh@english.upenn.edu (GIC; La Casa Latina; Writers House).
- 13** Freeman's Roadshow; 10 a.m.-3 p.m.; appraisals/seminars —10 a.m., 11:15 a.m., 12:30 p.m. & 2:15 p.m.; appraisals—Hall of Flags, Houston Hall; seminars— auditorium, Houston Hall; \$10/with reservation; \$15/at the door. Reservations/info.: (215) 627-2300 (Penn Alumni Club; Faculty Club; Wharton Alumni Club).
- 17** Small Lunch with American Author Dorothy Allison; 12:30-2 p.m.; Kelly Writers House. RSVP/Info.: (215) 573-

- WRIT, wh@english.upenn.edu or www.english.upenn.edu/~wh. See Talks, reverse (Women's Studies; Writers House).
- 20** Penn Family Day; day-long celebration for Penn employees and their families; Tailgate Party & Children's Activities— 11 a.m.-noon; Franklin Field; Penn Family Activities—11 a.m.-4 p.m.; Museum; Penn vs. Yale football— noon; Franklin Field; free/faculty & staff; \$2/person. Info.: www.hr.upenn.edu/quality/staffrecognition/familyday.asp (Human Resources).
- Modern Mongolia: Reclaiming Genghis Khan; celebrate the opening of this all-new exhibit with authentic Mongolian dance performances, throat singing, children's workshops and more. 11 a.m.-4 p.m. University Museum. Info.: (215) 898-4890. See Exhibits (Museum).
- 25** Wine Tasting Wines of Antiquity: A Mongolian Feast; an evening of Mongolian-inspired food, wines from around the world, music and more, celebrating the opening of Modern Mongolia: Reclaiming Genghis Khan 6:30 p.m. University Museum; \$45; \$35/advance; \$30/ members. Info.: (215) 898-5093 (Young Friends of the University of Pennsylvania Museum).

- SPORTS**
- Tickets for football games \$10, \$5 seniors/children, free with PENNCard. Call ticket office (215) 898-6151. See www.upenn.edu/athletics.
- 4** Field Hockey vs. La Salle; 7 p.m.
- 5** Sprint Football vs. Princeton; 7:30 p.m.
- 6** (M) Soccer vs. Cornell; noon.
(W) Soccer vs. Cornell; 2:30 p.m.
Football vs. Holy Cross; 12:30 p.m.
- 7** Field Hockey vs. Cornell; noon.
- 10** (M) Soccer vs. Philadelphia University; 3:30 p.m.
- 12** Volleyball vs. Columbia; 7 p.m.
- 13** Volleyball vs. Cornell; 4 p.m.
Lightweight Rowing—Navy Day Regatta; All Day.
Heavyweight Rowing—Navy Day Regatta; All Day.
(W) Rowing—Navy Day Regatta; All Day.
- 17** Field Hockey vs. Georgetown; 7 p.m.
- 19** Volleyball vs. Yale; 7 p.m.
(M) Tennis, Penn Classic; All Day.
- 20** Volleyball vs. Brown; 4 p.m.
(W) Soccer vs. Yale; noon.
Football vs. Yale; noon.
(M) Soccer vs. Yale; 2:30 p.m.
Field Hockey vs. Yale; 6 p.m.
(M) Tennis-Penn Classic; All Day.
(M) Tennis-Penn Classic; All Day.
- 21** (M) Soccer vs. Rutgers; 2:30 p.m.
- 23** Sprint Football vs. Cornell; 7:30 p.m.
- 26** Lightweight Rowing—Head of the Schuylkill; All Day.
- 27** Heavyweight Rowing—Head of the Schuylkill; All Day.
(W) Rowing—Head of the Schuylkill; All Day.



Almanac
Suite 211 Nichols House, 3600 Chestnut St. Philadelphia, PA 19104-6106
(215) 898-5274 or 5275 FAX (215) 898-9137
E-Mail almanac@pobox.upenn.edu
URL: www.upenn.edu/almanac

Unless otherwise noted all events are open to the general public as well as to members of the University. For building locations, call (215) 898-5000 between 9 a.m. and 5 p.m. Listing of a phone number normally means tickets, reservations or registration required.
This October calendar is a pull-out for posting. Almanac carries an Update with additions, changes and cancellations if received by Monday noon prior to the week of publication. Members of the University may send notices for the Update or November At Penn calendar.

TALKS

1 *Molecular Control of Smooth Muscle Differentiation During Vascular Development and Following Vessel Injury*; Gary K. Owens, University of Virginia; 4-5 p.m.; Austrian Auditorium, CRB (Institute for Human Gene Therapy [IHGT]).

2 *A New Model for Metastasis Based upon Direct Observation of Tumor Cells in the Lung*; Ruth J. Muschel, pathology & laboratory medicine; noon; 2nd fl conference room, Vagelos Research Laboratories (IME).

Use of Site-Specific Recombinases to Explore Glucose Homeostatic Mechanisms in the Mouse; Mark A. Magnuson, Vanderbilt University Medical Center; noon; Austrian Auditorium, CRB (Biochemistry & Biophysics).

Avid and Protocol: Composing New Music for the New Hollywood; Paul Chihara, UCLA; 5 p.m.; rm. 302, Music Bldg. (Music).

Discovering the Sacred Link—The Way of the Himalayan Masters; Pandit Rajmani Tigonait, Himalayan Institute; 7 p.m.; University Museum; \$15/advance; \$20/door. Tickets/info.: 1-800-822-4547 or www.himalayaninstitute.org (University Museum; Himalayan Institute).

3 *Cellular and Viral Factors Involved in the Assembly of Influenza A Virus*; Christopher Broder, Uniformed Services University; noon; auditorium, CRB (Microbiology).

George Nick Slide Lecture; George Nick, painter; 5 p.m.; rm. B-3, Meyerson Hall (Fine Arts).

4 *The Growing Gulf Between Men and Women*; Andrew Hacker, scholar of race and contributor to the *New York Review of Books*; 4 p.m.; rm. 17, Logan Hall (Sociology).

5 *Ownership and the Quality of Chronic Kidney Disease Care*; Neil Powe, Johns Hopkins Medical Institute; noon-1:30 p.m.; auditorium, Colonial Penn Center (LDI Research Seminar Series).

Science and Sustainable Practice; Gilman Veith, EPA, National Health and Environmental Effects Research Laboratory; 12:15-1:45 p.m.; Auditorium, Wistar (Institute for Environmental Studies [IES]).

Disturbing Beauty: John Singer Sargent's Construction of the Feminine; Susan Sidlauskas, history of art; 3 p.m.; Rich Seminar Rm. 201, Jaffe Bldg. (History of Art).

Merchants of Health: American Medicine and the Rise of Modern Con-

TALKS

sumer Culture; Nancy Tomes, SUNY Stony Brook; 4:15 p.m.; rm. 337, Logan Hall (History & Sociology of Science).

8 *Genetic Manipulation of the Dendritic Cell- T Cell Interaction*; Drew M. Pardoll, Johns Hopkins University; 4-5 p.m.; Austrian Auditorium, CRB (IGHT).

TBA; Vinh-Kim Nguyen, Montreal General Hospital; 4:15 p.m.; rm. 337, Logan Hall (History & Sociology of Science).

Sherman Fleming Slide Lecture; Sherman Fleming, performance artist; 5 p.m.; rm. B-3, Meyerson Hall (Fine Arts).

9 *Use of Metabolic Engineering to Define New Therapeutic Strategies for Diabetes*; Christopher B. Newgard, University of Texas Southwestern Medical Center; noon; Austrian Auditorium, CRB (Biochemistry & Biophysics).

IME Biophysics Workshop; noon-4 p.m.; *details TBA*; (IME Interdisciplinary Seminar Series).

10 *Membrane Fusion and Poration in the Pathogenesis of Infectious Diseases*; Joshua Zimmerberg, NIH; noon-1 p.m.; JMB Reunion Hall (Microbiology).

Max Weber Meets the Belmont Report: Toward a Sociological Account of Principalism; John Evans, UCLA; noon-1:30 p.m.; suite 320, Center for Bioethics (Center for Bioethics).

The Anatomy of Infidelity: Structures of Error Prone and Accurate DNA Polymerases; Thomas E. Ellenberger, Harvard Medical School; 4 p.m.; Grossman Auditorium, Wistar Institute (Wistar).

11 *Making Policy at the Federal Reserve*; Anthony Santomero, Federal Reserve Bank of Philadelphia; 4:30-6 p.m.; rm. 351, Steinberg Hall-Dietrich Hall (Wharton Business & Public Policy).

15 *Modeling and Optimization in Protein and Metabolic Engineering*; Costas D. Maranas, Penn State University; 3:30-4:30 p.m.; rm. 337, Towne Bldg. (Chemical Engineering).

Facing Loss: Laws of Mourning in Jewish Law; Moshe Halbertal, Hebrew University; 4 p.m.; rm. 240-A, Silverman Hall (Law School).

Identification and Targeting of Cancer Stem Cells; Michael F. Clarke, University of Michigan Medical Center; 4-5 p.m.; Austrian Auditorium, CRB (IGHT).

William Pulteney Alison and the Domain of Public Health; Christopher Hamlin, University of Notre Dame; 4:15 p.m.; rm. 337, Logan Hall (History & Sociology of Science).

TALKS

Thomas Chimes Slide Lecture; Thomas Chimes, painter; 5 p.m.; rm. B-3, Meyerson Hall (Fine Arts).

16 *A Role for mTOR in Insulin and Amino Acid Signaling in Beta-cell Transcription and Translation*; Michael McDaniel, Washington University School of Medicine; noon; Austrian Auditorium, CRB (Biochemistry & Biophysics).

Sub-Cellular Immunotargeting of Therapeutic Cargoes to Endothelial Cells; Vladimir R. Muzykantov, pharmacy; noon; 2nd fl conference room, Vagelos Research Laboratories (IME; Bioengineering).

Black Voice, White Voice: Crossing Over in Jazz; Elaine Hayes, GSFA; 5 p.m.; rm. 302, Music Bldg. (Music).

17 *Working From the Outside: Intracellular Growth of Legionella Pneumophila within Macrophages*; Ralph Isberg, Tufts University Medical School; noon; Austrian Auditorium, CRB (Microbiology).

Before Burial: Death and Law; Moshe Halbertal, Hebrew University; 4 p.m.; rm. 240-A, Silverman Hall (Law School).

Repression by Nuclear Hormone Receptors; Mitchell A. Lazar, Medicine; 4 p.m.; Grossman Auditorium, Wistar Institute (Wistar).

Woodrow Wilson; Bruce Kuklick, history; 4-5:30 p.m.; Rm. 200, College Hall, (History).

Conversations with Dorothy Allison; author of Bastard Out of Carolina; 4:30 p.m.; rm. 17, Logan Hall. *See Special Events, reverse* (Judith Berkowitz Endowed Lecture in Women's Studies).

Celestial Catastrophies in Human Prehistory; Anthony L. Peratt, Los Alamos National Laboratory; Charles Alcock, astronomy & astrophysics; Harold Dibble, anthropology; Robert Giegengack, earth and environmental science; Jeremy A. Sabloff, University Museum; 6-7:30 p.m. University Museum; registration required. Optional reception follows: \$20/person. Info.: (215) 898-4890 (IES; University Museum; Center for Ancient Studies).

18 *Algerian/World History and Population Studies*; Matthew Connelly, Columbia University; 4:30 p.m.; rm. 209, College Hall (History).

Large City Planning Directors' Symposium; directors of city planning: Elizabeth Blume, Cincinnati; Michael Dobbins, Atlanta; Maxine Griffith,

TALKS

Philadelphia; and Todd Bressi, executive director, Places; 6 p.m.; rm. B-3, Meyerson Hall (GSFA).

19 *Re-investigating Akkadian Glyptic Art*; Yelena Rakic, history of art; 3 p.m.; Rich Seminar Rm., Jaffe Bldg. (History of Art).

Shahzia Sikander Slide Lecture; Shahzia Sikander, painter; 5 p.m.; rm. B-3, Meyerson Hall (Fine Arts).

22 *Pharmacogenetics: Trials in a Drug Therapy Revolution*; Oonagh Corrigan, Goldsmiths College; noon-1:30 p.m.; suite 320, Center for Bioethics (Center for Bioethics).

Isobutane Conversion over Metal Alloy and Acidic Catalysts; James A. Dumesic, University of Wisconsin at Madison; 3:30-4:30 p.m.; rm. 337, Towne Bldg. (Chemical Engineering).

Strategies to Enhance the Oncolytic Effect of Replicating Adenoviral Vectors; John G. Hays, NYU School of Medicine; 4-5 p.m.; Austrian Auditorium, CRB (IGHT).

Responsibility, Republicanism, and the Insanity Defense in Eighteenth-Century Hamburg; Mary Lindermann, Carnegie Mellon University; 4:15 p.m.; rm. 337, Logan Hall (History & Sociology of Science).

Something Else Politics; Craig Saper, University of the Arts, on the Fluxus movement; 4:30 p.m.; Kelly Writers House (Writers House).

Chris Sullivan Media Presentation/Slide Lecture; Chris Sullivan, animator; 5 p.m.; rm. B-3, Meyerson Hall (Fine Arts).

23 *RNA Dominance in Neuromuscular Disease*; Maurice S. Swanson, University of Florida; noon; Austrian Auditorium, CRB (Biochemistry & Biophysics).

Research on Genetics, Biorisks and Society at the University of Nottingham; Robert Dingwall, University of Nottingham; noon-1:30 p.m.; suite 320, Center for Bioethics (Center for Bioethics).

Shaker is a Stretch Chamel? Calcium Channels are Stretch Channels? What's Going On?; Catherine E. Morris, University of Ottawa; noon; 2nd fl conference rm., Vagelos Research Laboratories (IME).

Bridging Two Worlds: Technology at Penn; Louis P. Bememan, Center for Technology Transfer Program; 1 p.m.; Faculty Club, Inn at Penn (Women's Club).

The Development of Transgenic Mouse Models to Study the Pathogenesis of Brain Tumors; Mark A. Israel, Dartmouth Medical School; 4 p.m.; Grossman Auditorium, Wistar Institute (Wistar).

Discussion of Donald Martino

TALKS

Compositions; Donald Martino, Harvard University; 4:30 p.m.; rm. 302, Music Bldg. (Music).

24 *Kaposi's Sarcoma-Associated Herpesvirus and Episome Persistence*; Malcolm Martin, NIH; noon; auditorium, CRB (Center for AIDS Research).

Platelet Membrane GP IIb-IIIa in Thrombosis, Signaling and Inflammation; David R. Phillips, COR Therapeutics, Inc.; noon; rm. M-100, John Morgan Bldg. (IME; Thrombosis/Cardiovascular Biology Seminar Series).

Cut To: Subjectivity, Time and the Movies; Gary Ross, screenwriter/director; 5:30 p.m.; International House (Film Studies).

25 *TBA*; Edward G. Rendell; 4:30 p.m.; Levy Conference Room, Silverman Hall (Law School).

What's the Big Deal About the Big Bang?; Chung-Pei, Michele Ma, astronomy; 7 p.m.; Newman Hall (Orthodox Christian Fellowship at Penn).

26 *When You Come to a Fork in the Road, Take It! The Radon Issue*; Bill Belanger, EPA, Air Protection Division; 12:15-1:45 p.m.; Grossman Auditorium, Wistar Institute (IES).

TBA; Claudia Gould, ICA; 3 p.m.; Rich Seminar Rm. 201, Jaffe Bldg. (History of Art).

29 *Dendritic Cell and Exosome-based Immunotherapy of Cancer*; Laurence Zitvogel, Institute Gustav Roussy; 4-5 p.m.; Austrian Auditorium, CRB (IGHT).

New Light on Lighting: The Role of the Lumen in the Evolution of the Lighting Industry; Leslie S. Levine, Fusion Lighting Inc.; 4:15 p.m.; rm. 337, Logan Hall (History & Sociology of Science).

Marta Chilindron Slide Lecture; Marta Chilindron, sculptor; 5 p.m.; rm. B-1, Meyerson Hall (Fine Arts).

30 *Intramembranous Proteolysis of Notch and APP and the Genesis of Alzheimer's Disease*; Dennis J. Selkoe, Harvard Medical School; noon; Austrian Auditorium, CRB (Biochemistry & Biophysics).

Polyphony and Sacred History of Gabriel Sagard's Histoire du Canada (1636); Olivia Bloechl, graduate student, GSFA; *Du 'Jazz Hot' lá créole: Josephine Baker Sings Offenbach*; Andrew Fry, Oxford; 5 p.m.; rm. 302, Music Bldg. (Music).

31 *Using Mouse Genetics to Prove Host-Virus Interactions*; Judy Lieberman, Harvard Medical School; noon; Austrian Auditorium, CRB (Center for AIDS Research).

FITNESS/ LEARNING

Jazzercise; 5:30-6:30 p.m.; Tuesday and Thursday; Newman Center; first class free; \$4.50/class, \$3.50/students; Carolyn Hamilton, (215) 662-3293 (days) or (610) 446-1983 (evenings).

4 *Where Will My Older Relative Live?*; 11:30 a.m.-1 p.m.; rm. 311, Houston Hall; registration: www.hr.upenn.edu/quality/workshop.asp (Quality of Life Workshops).

6 *Heating and Cooling*; how to avoid costly winter heating bills; 10 a.m.-noon.; University City District, 3940 Chestnut St.; \$5/UCHS members, \$10/ others (University City District).

8 *Strictly Speaking: Toastmasters' Meeting*; public speaking; 6:30 p.m.; Penn Bookstore. *Also October 22* (Bookstore).

13 *Philadelphia Cares Day*; volunteers go to Philadelphia public schools and paint murals and hallways, landscape school yards, whitewash graffiti. Info.: (215) 898-2020 or sammapp@pobox.upenn.edu (Penn VIPS).

16 *The Insider's Guide to Graduate Education at Penn*; a program with first-hand advice for first and second year Ph.D. students; 4-5:30 p.m.; Ben Franklin Room, Houston Hall (Career Services).

18 *Handling the Job of Customer Service*; 11:30 a.m.-1 p.m.; Rm. 223, Houston Hall; details and registration: www.hr.upenn.edu/quality/workshop.asp (Quality of Life Workshops).

ESL Evening Courses
6-8:30 p.m.; Bennett Hall. Registration: \$15/academic year, by *October 23*. Info.: www.sas.upenn.edu/elp or (215) 898-8681.

Courses for Elementary Levels
30 *Conversation Practice*; Tuesdays; \$265. *Through December 11*.

Courses for Intermediate & Advanced Levels
29 *Written Communication Practice*; Mondays; \$265. *Through December 10*.
TOEFL/TWE Preparation; Mondays & Wednesdays; \$530. *Through December 12*.

30 *Conversational Interactions*; Tuesdays; \$265. *Through December 11*.
Pronunciation Improvement; Tuesdays; \$265. *Through December 11*.

31 *Business Writing*; Wednesdays; \$265. *Through December 12*.

Kelly Writers House
3805 Locust Walk. Info.: (215) 573-WRIT, wh@english.upenn.edu or www.english.upenn.edu/~wh.

1 *Penn & Pencil Club*; creative writing group for faculty and staff; 5:15 p.m.; room 202.

3 *How to Write Memoir, and a few words about How to Read It*; Mickey Pearlman, author; one of her memoir essays appears in the recently published book, *Father: famous writers celebrate the bond between father and child*. 6-8 p.m.

READINGS/SIGNINGS

10 *H.W. Brands*; book signing and discussion on *Everything You Always Wanted to Ask About Ben Franklin*; 5:30-7 p.m.; Rosenwald Gallery, Annenberg Rarebook and Manuscript Library, Van Pelt -Dietrich Library; Info.: 1-800-390-1829, (Library)

Penn Bookstore
Info.: (215) 898-5965

1 *Richard Montauk, J.D.; How to Get into the Top Law Schools*; noon

3 *Carl Zimmer; Evolution, The Triumph of An Era*; noon

4 *Ralph & Gerald Faris; Living in the Dead Zone: Janis Joplin and Jim Morrison, Understanding Borderline Personality Disorder*; noon

Mark Crispin Miller; The Bush Dyslexicon, Observations of a National Disorder; 2 p.m.

9 *Karen Quinones Miller; Satin Doll*; noon.

11 *Slim Lambright; The Just Us Girls*; noon.

15 *Pat Croce; 110%: 110 Strategies for Feeling Great Every Day; time TBA*.

18 *Jennifer Egan; Look at Me; time TBA*.

25 *Solomon Jones; Pipe Dreams*; noon

30 *The Etiquette Girls; Things You*

Need to Know; noon
Wendy Kopp; One Day All Children; 2 p.m.

Kelly Writers House
3805 Locust Walk. Info.: (215) 573-WRIT, wh@english.upenn.edu or www.english.upenn.edu/~wh.

1 *Live at the Writers House*; a one-hour word and music radio show taping; 8 p.m. *Airs October 7, 11 p.m. on WXPN, 88.5 FM*.

10 *Speakeasy: Poetry, Prose, and Anything Goes*; an open mic performance night. 8 p.m. *Also October 24*.

11 *Night of Flamenco*; group reading, poetry, music and dance; 7 p.m. *See Special Events* (Greenfield Intercultural Center, La Casa Latina).

17 *PhillyTalks-19*; reading and discussion featuring Allen Fisher, London, England; and Karen Mac Cormack, Toronto, Canada; hosted by Matthew Hart, English; 6 p.m.

19 *Suppose An Eyes: A Poetry Working Group*; 4 p.m.; room 209.

20 *Laughing Hermit Series*; 4 p.m.

24 *Poet Jay Wright*; hosted by the Creative Writing program; 5 p.m.

25 *Material Poetics: Book Art & Printed Matter*; reading and symposium

Manuck! Manuck!; share and discuss fiction written by members; 7:30 p.m.; room 209. Info.: follinge@sas.upenn.edu. *Also October 17 & 31*.

4 *Philosophy Circle*; 8 p.m.; room 209. Info.: ganders@wharton.upenn.edu. *Also October 11, 18 & 25*.

5 *Suppose An Eyes: A Poetry Working Group*; 4 p.m.; room 209. *Also October 19*.

9 *Nonfiction Writers Workshop*; for non-fiction writers who have been published or are serious about trying; 5:30-7 p.m.; room 202. Info.: auersylvia@aol.com. *Also October 23 & 30*.

Workshop and conversation with John Timpane; author of *Poetry for Dummies*, and Commentary Page editor for the *Philadelphia Inquirer* 6 p.m.

15 *Pew Fellowships in the Arts: Information Meeting*; 2001 guidelines and applications 3-4:30 p.m.

16 *Talking Film / Hollywood Club: James Sadwith Visits*; Jim Sadwith, writer, director and producer of television drama for 20 years; his work was nominated for over 21 Emmy Awards and Golden Globes; 7 p.m.

18 *Writing/Translating Poetry*; talk will be in English; Jacques Darras, University of Picardie—Paris, France, on his translation of British and American poetry with specific examples; with Bob Perelman and Jean-Michel Rabate, English; 4-6 p.m. (French Institute).

23 *Theorizing in Particular: Approaches to Cultural Interpretation*; presents Juliet Flower MacCannell, UC-Berkeley; 6:30 p.m.; Arts Café.

29 *Theorizing in Particular: Approaches to Cultural Interpretation*; presents Rich Doyle, Penn State; 6:30 p.m.; Arts Café. Info.: adlevy@english.upenn.edu.

Morris Arboretum
Info.: (215) 247-5777, ext. 156 or 125; or www.upenn.edu/morris.

3 *Mapping and Site Analysis*; 7-9 p.m.; \$88; \$80/members. *Also October, 10, 17 & 24*.

4 *Landscape Design Studio*; 7-9:30 p.m.; \$180; \$162/members (cost includes a textbook on home landscape design). *Also October 11, 18 & 25 and November 1, 8 & 15*.

6 *Bewitching Begonias*; 10 a.m.-noon; \$22; \$20/members.

9 *Fall Highlights of the Morris Arboretum's Plant Collections*; slide lecture followed by a plant walk; 10 a.m.-12:45 p.m.; \$90; \$80/members. *Also October 23 and November 6*.

Landscapeping for Birds and Butterflies with Native Plants; 7-8:30 p.m.; \$22; \$20/members.

10 *Herbal Alternatives to Winter Woes*; 7-9 p.m.; \$27; \$25/members.

15 *Healing Plants: Discover Homeopathy*; 7-9 p.m.; \$22; \$20/members.

20 *Tree Identification and Appreciation: Conifers*; three-session course; 10 a.m.-12:30 p.m. \$82; \$75/members. *Also October 27 and November 3*.

22 *Healing Plants for Women's Health*; Chinese herbology remedies; 7-9 p.m.; \$22; \$20/members.

24 *Woody Plant Propagation*; 7-9 p.m.; \$55; \$50/members. *Also October 27, 10 a.m.-12:30 p.m*.

25 *Pruning Deciduous Trees*; morning: lecture and demonstration; afternoon: supervised, hands-on pruning. 9 a.m.-4 p.m.; \$45/morning only; 9 a.m.-12 noon; 85/all day: including lunch. *Rain date: October 26*.

Pruning for the Homeowner; 7-9 p.m.; \$50; \$45 /members. *Also October 27, 10 a.m.-12:30 p.m*.

27 *Herbal First Aid*; 10:30 a.m.-2:30 p.m.; \$44; \$40/members.

30 *Practical Rigging for Arborists*; three-day workshop; bring a hard hat with chin strap; 9 a.m.-4 p.m.; \$230/includes lunch. *Also October 31 and November 1*.

Dried Flower Arranging; 7-9:30 p.m.; \$38; \$34/members.

Online Computer Classes
Info: 800-288-8221, www.tts.isc.upenn.edu.

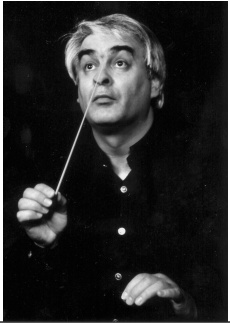

9 *JavaScript Fundamentals*; 6-9:30 p.m.; Tuesdays & Thursdays; \$855. *Through October 23*.

15 *Fireworks Introduction*; 9 a.m.-4:30 p.m.; Mondays & Wednesdays;\$570. *Through October 24*.

As part of the 2001-2001 PENNPresents at Annenberg Center, Wynton Marsalis (at right), winner of the Pulitzer Prize for Music, brings his septet to Zellerbach Theatre on October 24.



Musical Notes this Month



Marcus Roberts, (middle) jazz pianist and composer performs an original suite of music with his trio on October 26.

Conductor and music director Valery Polyansky (right) leads the Russian State Symphony Orchestra in a festival of Russian piano music on October 27.

See Music, reverse.

October

AT PENN