

# September

## AT PENN



Whenever there is more than meets the eye, see our web site,  
[www.upenn.edu/almanac/](http://www.upenn.edu/almanac/).

### ACADEMIC CALENDAR

**3** Labor Day.

**5** New Student Convocation and Opening Exercises.

Penn Reading Project.

**6** First day of classes.

**21** Add period ends.

### CHILDREN'S ACTIVITIES

**4** Story Hour; 11 a.m. Penn Bookstore. Info. (215) 898-5965. Also September 11, 18 & 25 (Bookstore).

**23** Plant Propagation for Kids; Bernie Wiener, the founder of the Delaware Valley Chapter Hobby Greenhouse Association; 1-3 p.m.; Arboretum; \$10; \$8/members (Morris Arboretum).

### EXHIBITS

#### Admission Donations and Hours

Arthur Ross Gallery, Fisher Fine Arts Library: free, Tues.-Fri., 10 a.m.-5 p.m., Sat. & Sun., noon-5 p.m.

Burrison Gallery, Faculty Club, Inn at Penn: free, Mon.-Fri, 8 a.m.-6 p.m.

Charles Addams Gallery: free, Mon.-Fri., 9 a.m.-5 p.m.

Esther Klein Gallery, 3600 Market: free, Mon.-Sat., 9 a.m.-5 p.m.

Institute of Contemporary Art: \$3, \$2/students, artists, seniors, free/members, children under 12, with PENNCard, and on Sundays 11 a.m.-1 p.m.; open: Wed.-Fri., noon-8 p.m.; Sat. & Sun., 11 a.m.-5 p.m. Kamin Gallery, 1st fl., Van Pelt-Dietrich Library Center. See [www.library.upenn.edu/services/hours/hours.html](http://www.library.upenn.edu/services/hours/hours.html).

Kroiz Gallery, Fisher Fine Arts Bldg., 220 South 34th St.: Mon.-Fri., 10 a.m.-5 p.m.

Morris Arboretum: \$6, \$5/seniors, \$4/students, free with PENNCard, children under 6; Mon.-Fri., 10 a.m.-4 p.m.; Wed. & Thurs. 10 a.m.-8 p.m.; Sat. & Sun., 10 a.m.-5 p.m.

University Museum: \$5, \$2.50/seniors and students w/ID, free/members, with PENNCard, children under 6; Tues.-Sat., 10 a.m.-4:30 p.m., Sunday (free), 1-5 p.m.

#### Upcoming

**4** Travels in the Labyrinth—Mexican Art in the Pollak Collection; works by 46 Mexican artists born between 1871-1940: including Alfredo Casztaneda, David Alfaro Siqueiros, Fernando Castillo, Jose Clemente Orozco, Guillermo Meza, Rufino Tamayo, Armando Amaya, Miguel Covarrubias, Jose Luis Cuevas, Jesus Escalera, Maximo Pacheco, and Roberto Montenegro. Opening reception: September 4, 7-8 p.m. Arthur Ross Gallery. Through December 9 (Provost's Spotlight Series).

**7** Undergraduate Faculty Exhibition; showcase of undergraduate fine arts faculty work. Opening reception: September 11, 5-7 p.m. Charles Addams Gallery. Through September 30 (GSFA).

**13** Tremain Smith: In the Presence of Spirits; West Philadelphia artist's abstract works incorporate collage, found objects, and wax. Opening reception: September 20, 5-7 p.m. Esther Klein Art Gallery. Through November 2.

Models in bathing suit and beach dress photo titled *cut-out*, (below) is part of the Rudi Gernreich ICA exhibit from September 15 to November 11. See Exhibits, above. Visit Almanac's web site at [www.upenn.edu/almanac](http://www.upenn.edu/almanac) for more photos.



### MUSIC

**6** Copasetic Trio; live jazz; 5-7 p.m.; 36th Street Plaza, Sansom Common (Sansom Common).

Orchestra and Wind Ensemble General Meeting; all interested members of the Penn community welcome; 7:15 p.m.; rm 210, Music Building Annex (Music).

**20** Local Music of Global Proportions; performers include: Estampas Colombianas, presenting the dances of Columbia; Raices Boricuas, traditional trovadores, singers, musicians, and dancers performing Puerto Rican folklore; Trio Crisol, Mexican, Cuban, and Puerto Rican popular songs; 8 p.m.; The Rotunda, 4012 Walnut St. (Foundation Community Arts Initiative; Provost's Spotlight Series; Raices Culturales Latinoamericanas).

**24** Jazz Concert with Archie Shepp; Philadelphia jazz legend; Cl'49 Auditorium, Houston Hall (VPUL; Perelman Quad Programming).

#### Penn Presents

8 p.m.; Zellerbach Theatre, Annenberg Center. Info./tickets: (215) 898-6701 or [www.PENNPresents.org](http://www.PENNPresents.org)

**4** John Scofield; jazz guitarist whose music ranges from tranquil ballads to hard-swinging funk jazz; \$29, \$23, \$19 (Provost's Spotlight Series).

**14** John Cale; formerly with the Velvet Underground; who will give a retrospective performance peppered with new songs; \$31, \$27, \$21.

**29** Kenny Garrett and his Quartet; alto saxist named Hot Jazz Artist by Rolling Stone and voted Alto Saxist of the Year by Downbeat; \$29, \$23, \$19.

### ON STAGE

**7** Freshman Performing Arts Night; sample a variety of performing arts opportunities including dance, theatre, a cappella, music and comedy; 8-11 p.m.; Zellerbach Theatre, Annenberg Center; \$6; \$5/new students. Info./tickets: (215) 898-3900. Also September 8 (Performing Arts Council).

**9** Chinese Folk Dances by Yu Yang; performance of two traditional Chinese folk dances, the Ribbon Dance and the Dragon Dance; 1 & 2 p.m.; Morris Arboretum (Arboretum).

**10** Penn Players Presents Gallows Humor; 8 p.m.; Iron Gate Theatre; tickets on Locust Walk 1 week before the performance. Also September 11 & 12 (Student Performing Arts).

**13** A Midsummer Night's Dream; Shakespeare's play reinvented; 5-10 p.m.; College Green. Also September 14 & 15 (Underground Shakespeare Company).

**20** The Varieties of Musical Time: Student Creativity in Action; Penn students question What is Time? performances: Five Places in Philadelphia; Tim's Take on Tap; and Mendelssohn, Piano Trio in D Minor; 6:30 p.m.; Amado Hall, Irvine Auditorium (Penn Humanities Forum; Music; Provost's Spotlight Series).

**22** Fall Step Show; student welcome back; 5-8 p.m.; Main Hall, Irvine Auditorium (Aya Incorporated).

### SPECIAL EVENTS

**4** ARCH Open House; 5-7 p.m.; ARCH Auditorium. Also September 6, 4-5:30 p.m. (ARCH).

**6** Reception for Progressives, Activists and Faithfuls; 5 p.m.; CA House (Christian Association).

**9** Saint Mary's Canterbury Club Barbecue; 4 p.m.; St. Mary's Church (St. Mary's Church).

**11** Wine & Cheese Tasting; reception for graduate students; 6 p.m.; St. Mary's Church (St. Mary's Church).

**12** Thriving at Penn; buffet dinner reception; students will be introduced to resources available to students of color while a panel of upper-class students lead a discussion; 5:30-7 p.m.; rm 110, Amado Recital Hall, Irvine Auditorium (Academic Support Programs).

**There's No Place Like Penn** A series of welcome back events for the Penn community (Office of Student Life).

**13** Y-100 College Tour; 7 p.m.; Wynn Commons.

Grease; drive-in-movie; 8 p.m.; Wynn Commons. Rain location: Hall of Flags, Houston Hall (SPEC Special Events; SPEC Film).

**14** Activities Day; clubs and organizations at Penn will provide information and a chance to join; noon-4 p.m.; Locust Walk (SAC).

Sansom Common Block Party; music, Philly food and chance to meet other students; 4-6 p.m.; 36th Street Plaza.

Special Event; 8 p.m.; Irvine Auditorium; tickets on sale September 11 & 12 at 10 a.m. on Locust Walk; 2 ticket limit, with valid Penn ID (VPUL Tangible Change; SPEC).

**15** Pre-Game Grill'n Chill; free BBQ before the football game; 4:30-6:30 p.m.; Wynn Commons (Alumni Society; Athletics).

Spectrum "Welcome Back" DJ Party; 10 p.m.-2 a.m.; Hall of Flags, Houston Hall; admission TBA.

**16** Hypnotist Tom DeLuca; 7 p.m.; Irvine Auditorium (Sophmore Class Board).

**20** 60s Dance Party for Incoming Freshman; in conjunction with the Gernreich exhibition, food, beverages &



Rudi Gernreich: Fashion Will Go Out of Fashion exhibit at the ICA, is the only museum in the U.S. to present this major exhibition. Total Look, (above) is an example of the animal print series where the clothes covered the entire body. All accessories including the underwear had the same giraffe pattern.

songs from the 60s (GSFA; ICA; WXPN; Provost's Spotlight Series).

**21** Auction of Garden Treasures; bid on unusual plants and garden-related items, including a bench made with wood from the Penn Treaty elm; 5-9 p.m.; Morris Arboretum; reservations required: (215) 247-5777 (Arboretum).

**22** Welcome Back Dance; 9 p.m.-1 a.m.; Hall of Flags, Houston Hall (Office of Student Life).

**28** Employee Resource Fair; enjoy food specials and learn about Penn benefits, resources and services; 11 a.m.-2 p.m.; Wynn Commons (A-3 Assembly; PPSA).

#### Faculty Club

Info./reservations: (215) 898-4618.

**4** Hour Glass Dining Room reopens.

**15** Pre-game Dinner; Penn/Lehigh football game; 4-6 p.m.; \$21 person.

**19** Faculty Club Annual Open House; faculty, staff and alumni welcome; 4-6 p.m.

**15** Italian Dinner Buffet; 5:30-8 p.m.

### SPORTS

Tickets for football games \$10, \$5 seniors/children, free with PENNCard. Call ticket office (215) 898-6151. See [www.upenn.edu/athletics](http://www.upenn.edu/athletics).

**7** (W) Soccer vs. Iowa State; 5 p.m.

Volleyball vs. St. Francis; 4:30 p.m.

**8** Volleyball vs. IPFW; 12:30 p.m.

**9** (W) Soccer vs. Delaware; 1 p.m.

Field Hockey vs. Ohio State; noon.

**11** Volleyball vs. Temple; 7 p.m.

**12** Field Hockey vs. Villanova; 7 p.m.

**14** (W) Soccer vs. Lehigh; 5 p.m.

**15** Football vs. Lehigh; 6:30 p.m.

Volleyball vs. Oakland; noon.

**16** (M) Soccer vs. College of Charleston; noon.

(W) Soccer vs. Temple; 1 p.m.

**19** Field Hockey vs. LaFayette; 7 p.m.

**21** (W) Soccer vs. George Mason; noon.

Volleyball vs. Loyola; 3 p.m.

Volleyball vs. Robert Morris; 8 p.m.

**22** Volleyball vs. Northeastern; 2 p.m.

Volleyball vs. Drexel; 7 p.m.

**29** Field Hockey vs. Dartmouth; noon.

(M) Soccer vs. Drexel; noon.

(W) Soccer vs. Dartmouth; 2:30 p.m.

### VOLUNTEERS

**13** American Gold Cup; 4 day event features the top teams on the American Grand Prix circuit; Devon Show Grounds; Volunteers needed for each day: Thursday 13: 9 a.m.-1 p.m. & 1-4 p.m.; Friday 14 & Saturday 15: 9 a.m.-1 p.m.; 1-4 p.m.; & 4-8 p.m.; and Sunday 16: 10 a.m.-1 p.m.; & 1-4 p.m. Info.: (215) 898-2020 or [sammapp@pobox](mailto:sammapp@pobox) (Penn VIPS).

**15** Tickets to the home opening football game Penn vs. Lehigh will be sold to volunteers and their families for \$1 (on 1st come 1st serve basis). Take a copy of this listing to the Box Office.

**Civic House** Info.: (215) 898-4831 or [www.upenn.edu/civichouse](http://www.upenn.edu/civichouse).

**12** Community Service and Advocacy Night; students learn about service groups; 7-9 p.m. Civic House.

**20** Volunteer Fair; internship oppor-

tunities; 11:30 a.m.-2 p.m. Locust Walk.

#### Jazz at Annenberg

(See Music)



Tranquil ballads, a hard-swinging funk jazz style and his recent CD of original compositions, *Works For Me*, have placed John Scofield among the finest jazz guitarists.



John Cale, a legendary artist who, with Lou Reed, co-founded the Velvet Underground, will play piano and acoustic guitar in a rare Philadelphia appearance.



Having formerly played with Miles Davis and the Duke Ellington Orchestra, Grammy-nominated Kenny Garrett will perform works from his own latest release, *Simply Said*, an album infused with haunting melodies and lush orchestrations.

## Almanac

Suite 211 Nichols House, 3600 Chestnut St. Philadelphia, PA 19104-6106  
(215) 898-5274 or 5275 FAX (215) 898-9137  
E-Mail [almanac@pobox.upenn.edu](mailto:almanac@pobox.upenn.edu)  
URL: [www.upenn.edu/almanac](http://www.upenn.edu/almanac)

Unless otherwise noted all events are open to the general public as well as to members of the University. For building locations, call (215) 898-5000 between 9 a.m. and 5 p.m. Listing of a phone number normally means tickets, reservations or registration required.

This September calendar is a pull-out for posting. Almanac carries an Update with additions, changes and cancellations if received by Monday noon prior to the week of publication. Members of the University may send notices for the Update or October At Penn calendar.



TALKS		FITNESS/ LEARNING	
<p><b>6</b> <i>Norm Frost’s Proposal of “Surrogate Consent”</i>: A Prolegomena to a Bayesian Theory of Informed Consent; David Casarett, Center for Bioethics; noon-1:30 p.m.; suite 320, 3401 Market St. (Center for Bioethics).</p> <p><b>11</b> <i>Glucokinase Disease and the Development of Antidiabetic Drugs</i>; Franz Matschinsky, Medicine; noon; Austrian Auditorium, 1st Fl. Clinical Research Buildings (Biochemistry and Biophysics).</p> <p><b>12</b> <i>A Theory of Health and Some of Its Implications for Bioethics</i>; Ken Richman, Bryn Mawr College; noon-1:30 p.m.; suite 320, 3401 Market St. (Center for Bioethics).</p> <p><i>Kaposi’s Sarcoma-Associated Herpes and Episome Persistence</i>; Mary Ballestas, Brigham &amp; Women’s Hospital, Division of Infectious Diseases; noon-1 p.m.; Austrian Auditorium, BRB II/III (Microbiology).</p> <p><i>Sigmund Freud</i>; Warren Breckman, History; 4-5:30 p.m.; rm 200, College Hall (History).</p> <p><i>Chemokines and Cancer</i>; Albert Zlotnik, Eos Biotechnology; 4 p.m.; Joseph N. Grossman Auditorium, Wistar (Wistar Institute).</p> <p><b>15</b> <i>Gernreich Exhibition Lecture</i>; Wolf D. Prix, Coop Himmelb(l)au; 4 p.m.; rm. B-1, Meyerson Hall (ICA GSFA).</p> <p><b>17</b> <i>Integrated Multiscale Process Simulation in Microelectronics</i>; Timothy Cale, RPI; 3:30-4:40 p.m.; rm. 337 Towne Bldg. (Chemical Engineering).</p> <p><b>19</b> <i>Transcriptional Activation and Repression by E2F and RB</i>; Brian Dynlacht, Harvard University; 4 p.m.; Joseph N. Grossman Auditorium, Wistar (Wistar Institute).</p> <p><b>20</b> <i>Le Mariage de Figaro: la toise et le mEtrei</i>; Michel Delon, Sorbonne; 4:30 p.m.; Cherpacck Lounge, Williams Hall (French Institute).</p>		<p><i>Jazzercise</i>; 5:30- 6:30 p.m.; Tuesday and Thursday; Newman Center; first class free; \$4.50/ class, \$3.50/ students; Carolyn Hamilton (215) 662- 3293 (days) or (610) 446-1983 (evenings).</p> <p><b>4</b> <i>Penn Faculty and Staff College Admission Seminars</i>; information sessions for parents and high school students regarding admissions process; 5:15 p.m., Benjamin Franklin Room, Houston Hall. <i>Also September 6, 5:15 p.m.</i> RSVP (215) 898-8587 (Undergraduate Admissions Office).</p> <p><b>6</b> <i>Community Service 101</i>; interactive workshop to learning about community service (Civic House). <i>Also September 11, 5:30-7 p.m.; September 13, 3:30-5 p.m.; September 26, 5:30-7 p.m.</i></p> <p><b>10</b> <i>Walk-in Tutoring</i>; 30 minute sessions for introductory and intermediate courses for undergraduate students; 6-10 p.m.; rm 214, Harnwell College House. <i>Mondays -Thursdays</i> (Academic Support Programs).</p> <p><i>Strictly Speaking: Toastmasters Meeting</i>; 6:30 p.m.; Bookstore. Info: (215) 898-5965. <i>Also September 24</i> (Bookstore).</p> <p><b>12</b> <i>Penn Professional Staff Assembly Book Group</i>; noon; Bookstore; Info: (215) 898-5965 (Bookstore).</p> <p><b>15</b> <i>Anger Management</i>; lecture series by senior clinicians from the Center for Cognitive Therapy; 9 a.m.-noon; \$65; info: (215) 898-4106 (Center for Cognitive Therapy).</p> <p><b>19</b> <i>African Sacred Hand Drum “Sekere”</i> Classes; 7 p.m.; Christian Association House; info.: (215) 746-6350 (Christian Association).</p> <p><b>20</b> <i>He Said, She Said: Communicating Across the Gender Gap</i>; 11:30 a.m.-1 p.m.; rm. 311, Houston Hall; on-line registration required: <a href="http://www.hr.upenn.edu/quality">www.hr.upenn.edu/quality</a> (Quality of Worklife Program).</p> <p><b>22</b> <i>Window Repair &amp; Maintenance</i>; learn to repair double-hung windows, maintenance, and replacement options; 9 a.m.-noon; Calvary Church; \$25, space limited (UCD).</p> <p><b>24</b> <i>Plumbing Systems</i>; learn to maintain, repair and replace old plumbing systems. 6:30-8:30 p.m.; UCD; \$10/\$5 members/UCD contributors (UCD).</p> <p><b>28</b> <i>Alpha Nu Omega Festival</i>; campus bible study groups will have info tables and entertainment; 1-3 p.m.; College Green (Alpha Nu Omega).</p> <p><b>29</b> <i>Exterior and Interior Restoration</i>; learn about restorations and which old and new materials can be used; 10 a.m.-noon; University City District; \$10/\$5 members/UCD contributors (UCD).</p>	
<p><b>21</b> <i>Research, Development, and Deployment of US Clean Energy Technologies</i>; Brian Connor, U.S. Department of Energy; 12:15-1:45 p.m.; Auditorium, Wistar Institute (Institute for Environmental Studies [IES]).</p> <p><b>24</b> <i>Pursuing Dinosaurs on Four Continents</i>; Peter Dodson, Anatomy, School of Veterinary Medicine; 4 p.m.; Bodek Lounge, Houston Hall (Provost’s Lecture Series).</p> <p><i>Sue Coe Slide Lecture</i>; painter; 5 p.m.; rm B-3 Meyerson Hall (GSFA).</p> <p><b>25</b> <i>Ethical Issues Raised by Generic Drugs</i>; Carole Ben-Maimon, Generic Pharmaceutical Association; noon-1:30 p.m.; suite 320, 3401 Market St. (Center for Bioethics).</p> <p><i>Studies on Lowe Syndrome: Inborn and Engineered Errors in Phospho-inositide Metabolism</i>; Robert Nussbam, NIH; noon; Austrian Auditorium, 1st Fl. CRB (Biochemistry and Biophysics).</p> <p><i>Trapped in the Minefields of History: Young German Authors Look at the Past</i>; Horst Daemmrch, professor emeritus of Germanic Languages and Literatures; 1 p.m.; Faculty Club (Women’s Club).</p> <p><b>26</b> <i>Trying to Solve the PML Puzzle</i>; Katherine Borden, Mt. Sinai School of Medicine; 4 p.m.; Joseph N. Grossman Auditorium, Wistar (Wistar Institute).</p> <p><i>Ottoman History</i>; Cemal Kafadar, Harvard University; noon; rm. 209, College Hall (History).</p> <p><i>Host and Viral Determinants of HIV-Induced Pathogenesis in Human Lymphoid Tissues</i>; Mark Goldsmith, University of California, San Francisco; noon-1 p.m.; Austrian Auditorium, Clinical Research Building (Microbiology/CFAR Seminar).</p> <p><b>28</b> <i>Environmental Priorities at the PA DEP</i>; David Hess, PA Department of Environmental Protection; 12:15-1:45 p.m.; Auditorium, Wistar Institute (IES).</p>		<p><b>5</b> <i>TOEFL/TWE Preparation</i>; 6-8:55 p.m.; \$530. <i>Through October 17.</i></p> <p><b>Elementary level speakers:</b></p> <p><b>4</b> <i>Conversation Practice</i>; \$265. <i>Through October 16.</i></p> <p><b>6</b> <i>Pronunciation Basics</i>; \$265. <i>Through October 18.</i></p> <p><b>Intermediate &amp; Advanced speakers:</b></p> <p><b>4</b> <i>Conversational Interactions</i>; \$265. <i>Through October 16.</i></p> <p><i>Pronunciation Improvement</i>; \$265. <i>Through October 16.</i></p> <p><b>5</b> <i>Language of Meetings</i>; \$265. <i>Through October 17.</i></p> <p><b>6</b> <i>Listening and Speaking with Confidence</i>; \$265. <i>Through October 18.</i></p> <p><i>Vocabulary Expansion</i>; \$265. <i>Through October 18.</i></p> <p><b>10</b> <i>Grammar Practice</i>; \$265. <i>Through October 15.</i></p> <p><b>Morris Arboretum</b></p> <p>Call (215) 247-5777, ext.125 for registration and additional information.</p> <p><b>1</b> <i>Big Trees</i>; tour the Arobretum’s oldest and largest trees on an hour-long walk; 2 p.m.; free with regular admission. <i>Saturdays &amp; Sundays through October 28.</i></p> <p><b>8</b> <i>Nighttime Nature Walk at Bloomfield Farm</i>; Tara Burgy, nature walk guide, will focus on how animals adapt to life in the dark; 6:30-8 p.m.; \$10/\$8 members.</p> <p><b>10</b> <i>Landscape Design Series: Constructing the Landscape</i>; choosing the best trees and shrubs to achieve desirable results in their landscape; accessing the quality of these plants before purchasing them; 7-9 p.m.; \$132; \$120/members. <i>Also September 24, October 1, 8, 15, 7-9 p.m.; and October 20, 10 a.m.-1 p.m.</i></p> <p><b>11</b> <i>Cottage Gardening</i>; instructors Shelley Dillard and Judy McKeon explore this informal gardening style; 7-9 p.m.; \$55; \$50/members. <i>Also September 15, 9:30 a.m.-12:30 p.m.</i></p> <p><i>Landscaping with Bulbs</i>; 10 a.m.-12:30 p.m.; \$33; \$30/members.</p> <p><b>12</b> <i>Twilight Garden Walk</i>; Bob Gutowski, plantsman and historian talks about plants that would be valuable garden additions; 6:30-8 p.m.; \$17; \$15/members.</p> <p><i>Families of Flowering Plants—An Introduction</i>; Susan Munch, Albright College will lead a four-day class describing 20 of the most important</p>	
<p><b>21</b> <i>Research, Development, and Deployment of US Clean Energy Technologies</i>; Brian Connor, U.S. Department of Energy; 12:15-1:45 p.m.; Auditorium, Wistar Institute (Institute for Environmental Studies [IES]).</p> <p><b>24</b> <i>Pursuing Dinosaurs on Four Continents</i>; Peter Dodson, Anatomy, School of Veterinary Medicine; 4 p.m.; Bodek Lounge, Houston Hall (Provost’s Lecture Series).</p> <p><i>Sue Coe Slide Lecture</i>; painter; 5 p.m.; rm B-3 Meyerson Hall (GSFA).</p> <p><b>25</b> <i>Ethical Issues Raised by Generic Drugs</i>; Carole Ben-Maimon, Generic Pharmaceutical Association; noon-1:30 p.m.; suite 320, 3401 Market St. (Center for Bioethics).</p> <p><i>Studies on Lowe Syndrome: Inborn and Engineered Errors in Phospho-inositide Metabolism</i>; Robert Nussbam, NIH; noon; Austrian Auditorium, 1st Fl. CRB (Biochemistry and Biophysics).</p> <p><i>Trapped in the Minefields of History: Young German Authors Look at the Past</i>; Horst Daemmrch, professor emeritus of Germanic Languages and Literatures; 1 p.m.; Faculty Club (Women’s Club).</p> <p><b>26</b> <i>Trying to Solve the PML Puzzle</i>; Katherine Borden, Mt. Sinai School of Medicine; 4 p.m.; Joseph N. Grossman Auditorium, Wistar (Wistar Institute).</p> <p><i>Ottoman History</i>; Cemal Kafadar, Harvard University; noon; rm. 209, College Hall (History).</p> <p><i>Host and Viral Determinants of HIV-Induced Pathogenesis in Human Lymphoid Tissues</i>; Mark Goldsmith, University of California, San Francisco; noon-1 p.m.; Austrian Auditorium, Clinical Research Building (Microbiology/CFAR Seminar).</p> <p><b>28</b> <i>Environmental Priorities at the PA DEP</i>; David Hess, PA Department of Environmental Protection; 12:15-1:45 p.m.; Auditorium, Wistar Institute (IES).</p>		<p><b>15</b> <i>Family Birding Class</i>; 10 a.m.-noon; \$10; \$8/members.</p> <p><i>Flowers and Roses: A Perfect Combination for your Garden</i>; Mike Tuszyński, rosarian and horticulturist will show you how to use roses, ornamentals, perennials and annuals to design a garden or transform an existing garden; 10 a.m.-noon; \$22; \$20/members.</p> <p><b>22</b> <i>Contemporary Floral Designing Clustering</i>; Cheryl Wilks, owner of Flowers on Location; 10 a.m.-noon; \$33; \$30/members.</p> <p><i>Weed Identification Workshop</i>; Laurie Anne Albrecht; workshop focuses on identifying and controlling prolific lawn and garden weeds while touring the arboretum grounds; 10 a.m.-1 p.m.; \$33; \$30/members.</p> <p><b>25</b> <i>Refining your Climbing Skills</i>; this course is for geared students who have mastered basic climbing skills; 9 a.m.-4 p.m.; \$85 (will include lunch). <i>Rain date: September 26.</i></p> <p><i>Meadows, Native Grasses, and Cultivars for Urban and Suburban Gardens</i>; walk through meadows; slide presentation on desirability of meadows and how to install them; 6:30-8:30 p.m.; \$22; \$20/members.</p> <p><b>29</b> <i>Garden Photography</i>; Melvin Chappell, photographer, will teach beginner and intermediate 35 mm camera users the techniques needed to enjoy the art of nature photography; 10 a.m.-12:30 p.m.; \$55; \$50/members. <i>Also October 6.</i></p> <p><b>Office of Learning Resources</b></p> <p>Info.: (215) 573-9235. All workshops in Houston Hall, unless otherwise noted.</p> <p><b>6</b> <i>Ways of Learning in Graduate School</i>; 3-4 p.m.; Bishop White Rm.</p> <p><i>10 Best Study Strategies</i>; 4-5 p.m. &amp; 7-8 p.m.; Golkin Room. <i>Also September 10, 7-8 p.m.</i></p> <p><b>10</b> <i>Getting to Know the American Classroom</i>; 3-4:30 p.m.; rm 201, Bennett Hall. <i>Also September 11, 6-7:30 p.m.; rm 321, Bennet Hall</i> (Office of International Programs).</p> <p><b>12</b> <i>Successful Reading, Writing, and Study Strategies</i>; 6-8 p.m.; rm 321 Bennett Hall. <i>Also September 13, 3-5 p.m.; rm 201, Bennett Hall</i> (Office of International Programs).</p> <p><i>Introduction to Time Management</i>; 7-8 p.m. Grachfield rm. <i>Also September 18, 7-8 p.m.; Bishop White Rm.</i></p> <p><b>25</b> <i>Reading &amp; Learning in Less Time</i>; 7-8 p.m.; Bishop White Rm. <i>Also October 1, 7-8 p.m.</i></p>	

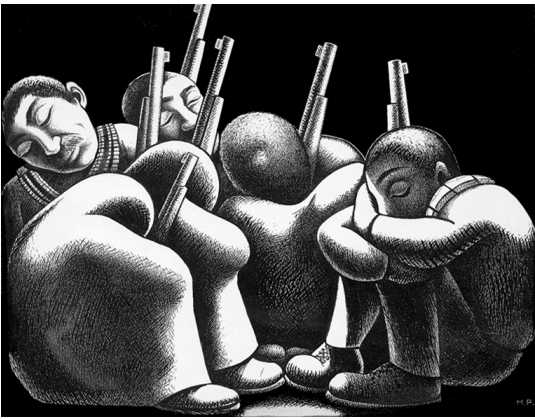
# Art and Artifacts: From Around the World to Our Own Backyard



Arthur Ross Gallery

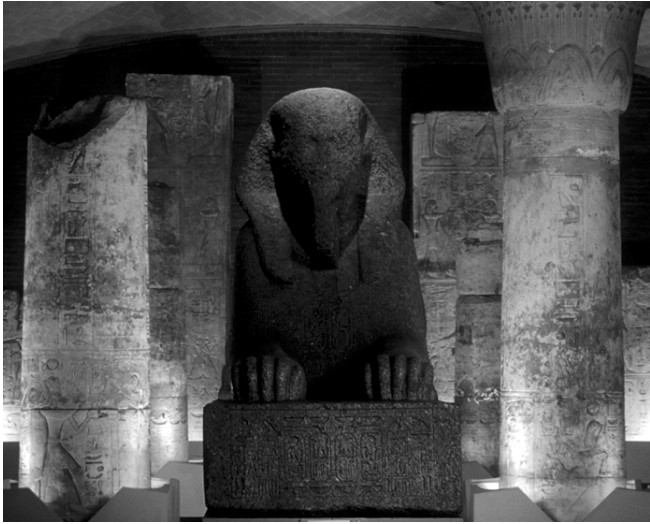


*El Tunero*, (above left) by Fernando Castillo (1935), *Nina Con Elotes*, (above right) by Diego Rivera, (1938) *Sleeping Soldiers*, (right) by Maximo Pacheco, (1934) are part of the *Travels In the Labyrinth* exhibit at the Arthur Ross Gallery, September 4 through December 19. See Exhibits, reverse.



Ram in the Thicket (above).

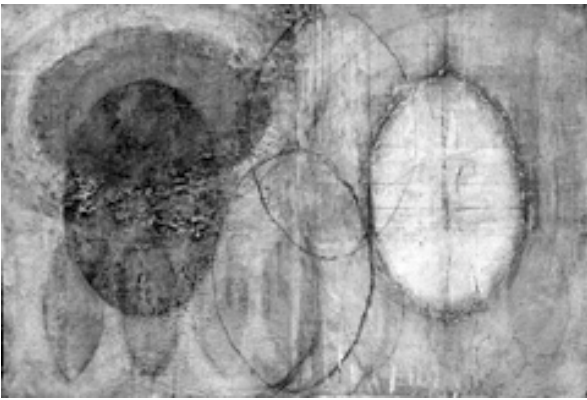
Sphinx of Ramesses II (below) is in the Lower Egyptian Gallery.



Esther M. Klein Art Gallery



*Open Door*, (left) is oil, wax & collage on panel, and *Wisdom*, (right) is oil, wax and collage on paper. Both are by West Philadelphia artist Tremain Smith. Both will be on display as part of the upcoming exhibit *In the Presence of Spirits*, at the Esther M. Klein Art Gallery, beginning September 13. See Exhibits, reverse, for details.



See Exhibits, reverse, for scheduled tours of the Museum’s China gallery as well as the highlights from the Royal Tombs of Ur.



19th century Chinese crystal ball