

ACADEMIC CALENDAR

2 Advance Registration, Spring Term. Through November 15.  
25 Thanksgiving Recess; begins at close of classes. Ends 8 a.m., November 30.

CHILDREN’S ACTIVITIES

7 Children’s Workshop: Walk Like an Egyptian; ages 8-12 explore the Museum’s Egyptian galleries, and decorate their own sarcophagus lid or paint a tomb wall; 10 a.m.-noon; University Museum; \$5 materials fee; preregistration required: 898-4015 (Museum).  
Saturday Story Hour; 10-11 a.m.; Children’s Area, Penn Bookstore. Saturdays through November 28 (Bookstore).  
8 “Let’s Build a Birdfeeder”; elementary students learn about birds and build their own birdfeeder to take home; 1-3 p.m.; \$17 family fee; \$14.50-members family fee; info: 247-5777, ext. 121 (Morris Arboretum).

CONFERENCES

7 The Cruelty Connection: The Links Between Animal Abuse, Child Abuse and Family Violence; 8:30 a.m.-5:30 p.m.; Room B-101, VHUP; \$25 registration fee; info: http://phl.vet.upenn.edu/~serpell/conference/ (Vet School; Penn Center for the Interactions of Animals and Society; PA SPCA).  
8 Archaeology and the Bible: From Canaan to Ancient Israel; day-long symposium; noted Israeli and American Scholars debate issues in Old Testament scholarship; \$75; \$60-members; info: 898-4890 or www.upenn.edu/museum/ (University Museum; Archaeology Magazine).  
9 Reflections from Three Generations of African American Nursing Leaders: The Paths We Tread; moderator: Rosalyn Watts, Center for Urban Health Research; panelists: Vernice Ferguson, nursing; Loretta Sweet Jemmott, Center for Urban Health Research; Kathleen Jennings-Dozier, National Cancer Institute; 2:30-4:30 p.m.; School of Nursing Auditorium; info: 898-4522 (Nursing; Annenberg School).  
17 Beyond Ideology: Discovering Hope for America’s Cities in Leadership, Management and Faith; Steinberg Symposium; info: www.upenn.edu/home/alumni/steinberg.html. Through November 19. See Talks (SAS).  
21 The Birth of Art; day-long program; noted French and American Scholars, including Jean-Clottes, explore the origins of human artistic expression and discuss cave art/paintings recently discovered in Chauvet and Cosquer, France; \$50; \$40-members; info: 898-4890 or www.upenn.edu/museum/ (University Museum; French Institute; Center for Ancient Studies).

EXHIBITS

Admission donations and hours  
Arthur Ross Gallery, Fisher Fine Arts Library: free, Tues.-Fri., 10 a.m.-5 p.m., Sat. & Sun., noon-5 p.m.  
Burrison Gallery, Faculty Club: free, Mon.-Fri., 9 a.m.-6 p.m.  
Esther Klein Gallery, 3600 Market: free, Mon.-Fri., 9 a.m.-5 p.m.  
Institute of Contemporary Art: \$3, \$2/students, artists, seniors, free/members, children under 12, with PENNCard, and on Sundays 11 a.m.-one; open: Thurs., 10 a.m.-7 p.m.; Wed.-Fri., 10 a.m.-5 p.m..  
Meyerson Hall Galleries: free, Upper Gallery: Mon.-Fri., 9 a.m.-5 p.m.; Lower Gallery: Mon.-Fri., 10 a.m.-6 p.m., Sat., noon-5 p.m.  
Morris Arboretum: \$4, \$3/seniors, \$2/students, free/with PENNCard, children under 6; Mon.-Fri., 10 a.m.-4 p.m.; Sat. & Sun., 10 a.m.-5 p.m.  
Rosenwald Gallery: free; 6th Floor, Van Pelt-Dietrich Library Center; open: Mon.-Fri., 9 a.m.-5 p.m., Sat., 10 a.m.-1:45 p.m.

(Left to right): Dancers Richard Chen See, Andrew Asnes, Silvia Nevijinsky and Thomas Patrick of The Paul Taylor Dance Company perform “Piazzola Caldera,” a fusion of modern dance and tango at the Annenberg Center this month . See On Stage.



Photo by Howard Schatz

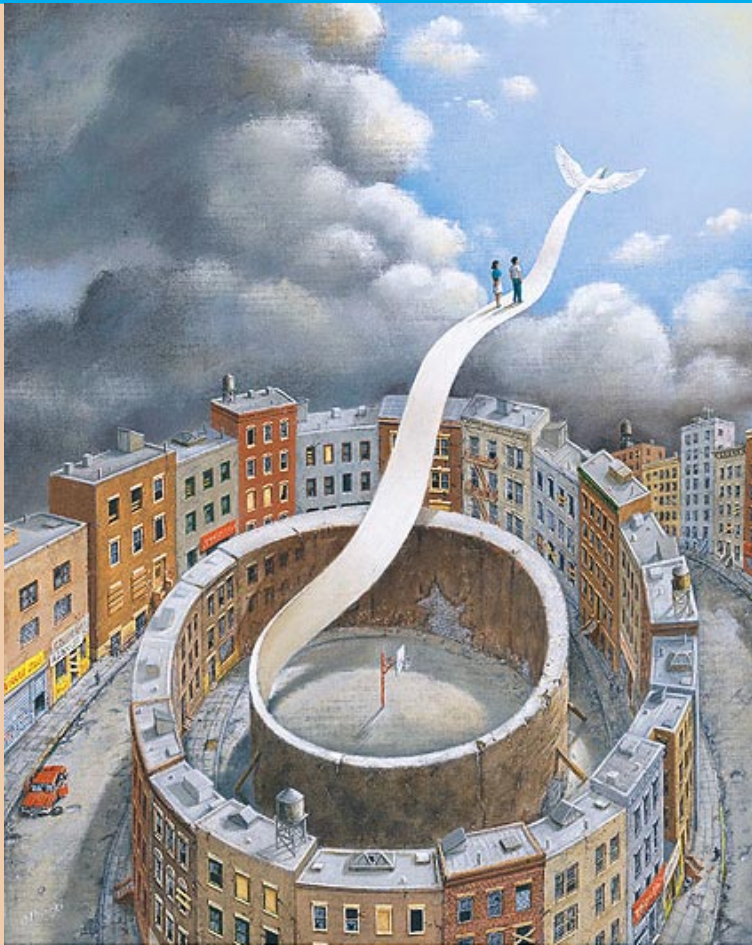


Illustration: Rafal Olbinski; Design: Frank Baseman

The Steinberg Symposium “Beyond Ideology: Discovering Hope for America’s Cities in Leadership, Management and Faith” brings leaders together to devise solutions to the problem of urban decay. See Conferences.

University Museum: \$5, \$2.50/seniors and students w/ID, free/members, with PENNCard, children under 6; Tues.-Sat., 10 a.m.-4:30 p.m., Sunday (free), 1-5 p.m..  
Upcoming  
2 Women’s Athletics at Penn: A Celebration; photographs commemorating 25 years of Penn Women’s Teams participating in Ivy League Championship competition. Opening reception: November 5, 4:30-6:30 p.m.; Burrison Art Gallery, Faculty Club. Through November 31.  
2nd Year MFA Exhibition; Meyerson Galleries. Through November 13.  
13 From the Lighthouse to the Laundromat: Two Exhibitions Featuring New Work by Tacita Dean and Steven Pippin; British artists Dean, working in film, video and drawing; and Pippin, working in washing machine photography. Preview reception: November 12, 5:30-7:30 p.m. Institute of Contemporary Art. Through January 3.  
16 Undergraduate Fine Arts Exhibition; student work; Meyerson Lower Gallery. Through December 4.  
19 Two-Woman Exhibition: E. Sherman Hayman & Julie Mardin; works concerning how children learn violent behavior through their play-things; Mardin working in photo-collage, Hayman in sculptures made out of toys. Opening reception: November 19, 5:30-8 p.m. Esther Klein Gallery. Through December 29.  
Now  
From Warhol to Mapplethorpe: Three Decades of Art at ICA. Through November 1.  
Recent Acquisitions; Kroiz Gallery, Architectural Archives. Through December.  
The Spanish Civil War: An Exhibition of Memoirs, Literature and Poetry Spawned by Conflict; Kamin Gallery, 1st Floor, Van Pelt-Dietrich Library Center. Through December.  
Twentieth-Century British Paintings from the Beaverbrook Art Gallery; traveling exhibition from the collection assembled by Canadian press magnate, the first Baron Beaverbrook, who was a longtime resident of England and patron of British Art. Arthur Ross Gallery. Through December 13.  
Fancy’s Images: Envisioning Shakespeare’s Words; Shakespearean images assembled from the Annenberg Rare Book and Manuscript Library; Rosenwald Gallery; 6th floor, Van Pelt-Dietrich Library Center. Through January.  
Treasures of the Chinese Scholar; selections of “scholar art” from the Ji Zhen Zhai collection: calligraphy painting and artworks in wood, lacquer, ivory, stone, horn and metal; second floor, Changing Gallery; University Museum. Through January 3.  
An Italian Journey; 33 black and white photographs by Liana Miuccio. First Floor, Sharpe Gallery; University Museum. Through January 6.  
Roman Glass: Reflections on Cultural Change; more than 200 examples of Roman glass from the first century BC. through the sixth century AD.; second floor, Dietrich Gallery; University Museum. Through May 9.  
Canaan and Ancient Israel; the first major North American exhibition dedicated to the archaeology of ancient Israel and neighboring lands, features more than 500 rare artifacts from about 3000 to 586 BC., excavated by University of Pennsylvania archaeologists in Israel, Jordan, and Lebanon. Opening Reception: 1:30-4:30 p.m.; Biblical Archaeology Gallery, University Museum. Long-term exhibition.  
Ongoing  
Ancient Greek World; Living in Balance: Universe of the Hopi, Zuni, Navajo and Apache; The Egyptian Mummy: Secrets and Science; Raven’s Journey: World of Alaska’s Native People; Buddhism: History and Diversity of a Great Tradition; University Museum.  
Healing Plants: Medicine Across Time and Cultures; Works by Harry Gordon; massive sculpture in wood, small pieces in granite; Butcher Sculpture Garden, Morris Arboretum.  
University Museum Tours  
Meet at the main entrance; 1:30 p.m. Free with Museum admission donation. Info: www.upenn.edu/museum/.

- 1 Classical
- 7 China
- 8 Mesoamerica
- 14 Egypt
- 15 Canaan and Ancient Israel
- 21 Africa
- 22 Raven’s Journey
- 28 Classical
- 29 Southwest

FILMS

Samurai Film Festival  
Japanese w/ English Subtitles; 7 p.m.; Stiteler B-26 (Center for East Asian Studies).  
10 Miyamoto Musashi/Samurai Trilogy, Part I; (I. Hiroshi; 1955).  
24 Seppuku/Harikiri; (K. Masaki; 1962).  
International House  
Films, film series and events at International House, 3701 Chestnut St.; full descriptions on-line: www.libertynet.org/~ihouse; tickets: \$6.50, \$5.50/members, students, seniors, \$3.50/kids 12 and under; info/tickets: 895-6542.  
1 Habit (L. Fessenden; 1997; US); 7:15 p.m. Also November 4-5, 6:30 & 8:30 p.m.  
Carnival of Souls (H. Harvey; 1962; US); 9:30 p.m.

November  
AT PENN

Whenever there is more than meets the eye, see our website, www.upenn.edu/almanac

MEETINGS

11 University Council; 4-6 p.m.; McClelland Lounge, Quad; PENNCard required. Observers must register in advance, 898-7005.  
16 PPSA Executive Board; contact Terri White, 898-0809, for time and location.

MUSIC

7 Trance Music of Baluchistan; Pakistani music with the Baluch Ensemble of Karachi; 8 p.m.; \$17.50; reserved seating; International House; info: 895-6537 (Folklife Center; South Asia Center).  
Vidna Obmana and Spectral Voices; 8 p.m.; St. Mary’s Church, 3916 Locust Walk; \$15; info: 573-3340 (Star’s End Gathering Concert Series).  
18 Madrigal Singers; selections of light Renaissance music; 4 & 5:10 p.m.; First Floor, Penn Bookstore (Bookstore).  
22 Natalie MacMaster; Scottish style fiddler/step-dancer from Cape Breton, Canada; 7 p.m.; \$17.50; reserved seating; International House; info: 895-6537 (Folklife Center).

Department of Music  
All events are free and take place at the Cathedral Church of the Saviour, 38th & Chestnut Streets. Info: Concert Office, 898-6314, or www.sas.upenn.edu/music.

7 Witches, Sorcery and Stormy Weather; chamber concert featuring music by Purcell, Telemann, and Gluck, plus Vivaldi’s La Tempesta di Mare; Penn Baroque & Recorder Ensembles, Penn Chamber Music Society; 8 p.m.  
13 Masses by the Masters; William Byrd’s Mass for Four Voices, J. S. Bach’s Lutheran Mass in F Major; University Choir and Penn Chamber Singers; 8 p.m.  
20 “La Fiesta Mexicana”; by Owen Reed; plus music by Copland, Bach, Wagner, Schuman and Hindemith; University Wind Ensemble; 8 p.m.  
22 Early Music at Penn: Spanish Holiday Music; Christmas and Hanukkah music from Medieval and Renaissance Spain; Ancient Voices; 3 p.m. Admission: \$8; \$4-seniors & students w/ ID; free-w/PENNCard.  
Student Performing Arts  
Info/tickets: 898-2312.  
6 Chords & Q-Notes; a capella groups Chord on Blues and Quaker Notes; 8 p.m.; Iron Gate Theatre. Also November 7.  
12 Glee Club: Fall Show; 8 p.m.; Harold Prince Theatre, Annenberg Center. Through November 14  
13 Off The Beat; a capella group; 8 p.m.; Dunlop Auditorium, Med School. Also November 14.  
20 Penny Loafers; co-ed a capella group; 8 p.m.; Dunlop Auditorium, Med School. Also November 21.  
21 R’nanah; Jewish singing; 8 p.m.; Hillel Auditorium.  
22 Jazz Ensemble; 8 p.m.; Harold Prince Theatre, Annenberg Center.

ON STAGE

7 Children’s Theater: “Cinderella”; part of BROADWAY FOR KIDS® series; 10:30 a.m. & 1 p.m.; Harrison Auditorium, University Museum; tickets: 563-3501 (Museum; American Theater Arts for Youth).  
12 Paul Taylor Dance Co.; fusion of modern dance and tango; part of Dance Celebration/Next Move Festival; 7:30 p.m.; Zellerbach Theatre, Annenberg Center; \$29-evening; \$27-matinee; \$15-students; info/tickets: 898-3900. Also November 13, 8 p.m. and 14, 2 p.m. & 8 p.m. (Zellerbach Series).  
Student Performing Arts  
All shows, \$5. Info/tickets: 898-2312.  
5 Extremities; performed by Arts House Theatre group; 8 p.m.; Rathskeller, Harnwell House. Through November 7.  
Onda Latina; Latin dance; 8 p.m.; Harold Prince Theatre, Annenberg Center. Through November 7.  
6 Without a Net; improvisational comedy; 8 p.m.; Studio Theatre, Annenberg Center. Through November 7.  
12 The Cherry Orchard; Anton Chekhov play performed by Theatre Arts group; 8 p.m.; Studio Theatre, Annenberg Center. Also November 14 and November 19-21.  
Stimulus Children’s Theatre; 8 p.m.; Iron Gate Theatre. Through Saturday November 14.  
19 Pippin; performed by Penn Players; Latin dance; 8 p.m.; Harold Prince Theatre, Annenberg Center. Through November 21.  
Penn Dance; 8 p.m.; Iron Gate Theatre. Through November 21.

RELIGION

Christian Association  
The CA Chapel is open 9 a.m.-9:30 p.m. for private prayers and meditation.  
Holy Communion; noon, Mondays, Chapel.  
Unitarian Worship; 7 p.m., Tuesdays, Room 31.  
Early Morning Prayers; with Rev. Beverly Dale; 8 a.m., Wednesdays, Conference Room.  
Quaker Worship; noon, Wednesdays, Room 31.  
Sisters Circle; women’s spiritual discussion group; noon, Thursdays, Conference Room.  
4 The Intersection of Faith, Research and Academic Passions, and Social Issues; faculty reception and panel discussion; 4 p.m.; info: 386-1530 (Christian Faculty Initiative).  
Orthodox Christian Fellowship  
All events begin at 7 p.m. and take place at the Newman Center.  
3 Ancient Relevance: Morality—Public & Private; vespers and discussion.  
10 Organizational Meeting  
24 Movie & Popcorn Night; movie title TBA.

SPECIAL EVENTS

1 Dedication in memory of Alice Cooper-Shoulberg; Scholarship Fund donated to the Kelly Writers House to support the creative publishing technology used by students; 2-3:30 p.m.; Writers House; (Writers House).  
3 Star Gazing Nights; open observatory night; 7-9:30 p.m.; DRL Observatory (Dept. of Physics & Astronomy).  
18 Holiday Bazaar; plant and bake sale, crafts, white elephant sale and tea tasting; proceeds benefit The Green Thumb Club; 10 a.m.-3 p.m.; Ralston Wellness Center (Penn Partners in Healthy Living; Institute on Aging).  
19 Go West! Go International! 3rd Thursdays: a variety of activities on campus and in the neighborhood, including A Toast to Ancient Rome; tour the Roman Glass: Reflections on Cultural Change exhibit (University Museum). See www.gowest.org.  
20 Songs of Protest, Poems of Power: A Celebration of Paul Robeson as An Artist and an Activist; 8-10 p.m.; (Writers House; DuBois College House).  
21 Celebrating History of Women’s Athletics at Penn; special slide presentation and reception; 4 p.m.; Palestra; info: 898-4618 (Faculty Club).  
27 Members’ Holiday Sale; 10% off gift items at the Museum Shop; info: www.upenn.edu/museum or 898-4045/4066 (University Museum).  
Faculty Club  
Brunch seating between 11:30 a.m.-1:30 p.m. Dinner seating between 5:30-7:30 p.m.  
14 Pre-Game Brunch (Penn vs. Harvard)  
18 Showcase Dinner; with wine tasting.

SPORTS

Info/tickets: 898-4519 or www.upenn.edu/athletics  
3 Field Hockey vs. West Chester; 7 p.m.  
6 Sprint Football vs. Army; 7:30 p.m.  
7 W. Basketball vs. Philadelphia Pharmacy-Scrimmage; 1 p.m.  
9 W. Basketball vs. Exhibition; 7 p.m.  
13 Sprint Football vs. Princeton; 7:30 pm.  
14 Football vs. Harvard (Fan Appreciation Day); 1:30 p.m.  
14 W Basketball vs. Villanova; time-TBA.  
17 M. Basketball vs. Kansas; 8 p.m.  
23 M. Basketball vs. Temple; 7:30 p.m.  
For info on Intramural and Club Sports, visit www.upenn.edu/recreation or call 898-6100.

Almanac  
Suite 211 Nichols House, 3600 Chestnut St. Philadelphia, PA 19104-6106  
(215) 898-5274 or 5275 FAX 898-9137  
E-Mail almanac@pobox.upenn.edu  
URL: www.upenn.edu/almanac

Unless otherwise noted all events are open to the general public as well as to members of the University. For building locations, call 898-5000 between 9 a.m. and 5 p.m. Listing of a phone number normally means tickets, reservations or registration required.  
This November calendar is a pull-out for posting. Almanac carries an Update with additions, changes and cancellations if received by Monday noon prior to the week of publication. Members of the University may send notices for the Update or December At Penn calendar.



TALKS	TALKS	TALKS	TALKS	TALKS
<p><b>2</b> <i>Organizing the Organizer: The Role of Wnts, TGFbs, and Their Target Hom-eobox Genes</i>; Daniel Kessler, cell &amp; developmental biology; 12:15 p.m.; Austrian Auditorium, 1st floor, Clinical Research Bldg. (Cell &amp; Developmental Biology).</p> <p><i>Structural Insights into Tubulin Polymerization and Microtubule</i>; Eva Nogales, University of California-Berkeley; 2 p.m.; Physiology Conference Room, 4th floor, Richards Building (Pennsylvania Muscle Institute).</p> <p><i>The Design of Molecular Sieves</i>; Charles Kresge, Mobil Technology Company; 3:30 p.m.; Room 337, Towne Bldg. (Chemical Engineering).</p> <p><i>TBA</i>; Cynthia Fisher, University of Illinois; 3:30 p.m.; Room 109, Annenberg School (Psychology).</p> <p><i>Faith and Intellect</i>; faculty-student dinner discussion; Scott Poethig, biology; 6 p.m.; CA, 3601 Locust Walk (Christian Association).</p> <p><i>Theory, Practice and Politics: Reflections from Scottsdale's Designer-in-Residence</i>; Todd Bressi, Pratt Institute; 6 p.m.; B-1 Meyerson Hall (GSFA).</p> <p><b>3</b> <i>Iron-Sulfur Proteins: New Roles of Old Clusters</i>; Michael Johnson, University of Georgia; noon; Austrian Auditorium, 1st floor, Clinical Research Bldg. (Biochemistry &amp; Biophysics).</p> <p><i>Research Subjects - Human and Animal</i>; Arthur Caplan, Garret A. FitzGerald, bioethics and biomedical graduate studies; noon-1 p.m.; Dunlop Auditorium (Center for Bioethics and Biomedical Graduate Studies).</p> <p><i>Generation at the Crossroads: Action and Apathy on the American Campus</i>; Paul Rogat Loeb, Seattle's Center for Ethical Leadership; 7-9 p.m.; Terrace Room, Logan Hall (Health Education's 10th Anniversary—Office of Health Education, Greenfield Intercultural Center).</p> <p><b>4</b> <i>Integrins, Small G-Proteins, and Novel Proteins in Platelet Function and Epithelial Transformation</i>; Leslie Parise, UNC; noon-1 p.m.; M100, John Morgan Bldg. (Pharmacology).</p> <p><i>Publications and Authorship</i>; Mildred Cho, Helen Davies, bioethics and biomedical graduate studies; noon-1 p.m.; Dunlop Auditorium (Center for Bioethics and Biomedical Graduate Studies).</p> <p><i>Architecture a la Francaise: L'Academie Royale d'Architecture</i>; Ramla Ben-Aissa; noon-1:30 p.m.; Seminar Room, Suite 400, 3440 Market Street (French Institute).</p> <p><i>Darwin's Black Box: the Biochemical Challenge to Evolution</i>; Michael Behe, Lehigh University; noon; Class of 1962 auditorium, John Morgan Bldg. (Penn Faculty Christian Fellowship).</p> <p><i>A Role for Arrestin in Desensitization of the Follicular Luteinizing Hormone Receptor</i>; Mary Hunzicker-Dunn, Northwestern; noon; Hirst Auditorium, Dulles Bldg., HUP (Center for Research on Reproduction and Women's Health).</p> <p><i>Regulation of Endothelial and Endocardial Differentiation During Early Cardiovascular Development</i>; H. Scott Baldwin, Medical School &amp; CHOP; 4 p.m.; Grossman Auditorium, Wistar Institute (Wistar Institute).</p>	<p>stitute (Wistar Institute).</p> <p><i>Visit with David Granger</i>; David Granger, editor-in-chief of Esquire, visits; 5 p.m.; WH; info: 573-WRIT (Writers House; Harrison House).</p> <p><i>L'Art Contemporain Francais</i>; Jean-Yves Jouannais, art critic; 4:30-6 p.m.; Cherpack Lounge (French Institute).</p> <p><b>5</b> <i>TBA</i>; Paul Sigler, Yale; 2 p.m.; Austrian Auditorium, Clinical Research Bldg (Biochemistry &amp; Molecular Biophysics Graduate Students).</p> <p><i>Open Records for Adult Adoptees in the U.S. as a Civil Rights Issue</i>; C. K. Bertrand Holub, <i>Bastard Nation</i>; 5 p.m.; Penn Women's Center (Multicultural Women at Penn).</p> <p><i>Materials for the New Millennium</i>; Nicholas Goldsmith, FTL Happold, New York City; 6 p.m.; B-3 Meyerson Hall (GSFA).</p> <p><b>6</b> <i>Mice Breeding Systems, Genetics, Reproductive Physiology and Transgenic Technology</i>; Timothy Poole, Fox Chase Cancer Center; 10 a.m.-noon, Medical Alumni Hall, HUP (Laboratory Animal Medicine).</p> <p><i>Environmental Pollution, Brain Chemistry &amp; Crime</i>; Roger D. Masters, Dartmouth; 12:15-1:45 p.m.; Room 1203, Steinberg Hall-Dietrich Hall (Institute for Environmental Studies).</p> <p><i>Images of Human Prehistory: Art and Science in France</i>; Maria Gindhardt, history of art; 3-5 p.m.; 201 Jaffe (History of Art).</p> <p><i>Leadership at an Established Not-for-Profit Organization</i>; Jorene Jameson, Senior Vice President, YMCA of Philadelphia and Vicinity; 3-5 p.m.; Fels Center (Fels Center of Gov't).</p> <p><b>8</b> <i>Heresy in the 1990's</i>; dinner discussion; Rev. Susan Cole, United Methodist Pastor; 5 p.m.; CA, 3601 Locust Walk (Christian Association).</p> <p><b>9</b> <i>TBA</i>; Debu Chakravarti, medicine; noon-1 p.m.; M100, John Morgan Bldg. (Pharmacology).</p> <p><i>Control of Lineage Commitment in Developing T Cells</i>; Dietmar Kappes, Fox Chase Cancer Center; 12:15 p.m.; Austrian Auditorium, 1st floor, Clinical Research Bldg. (Cell &amp; Molecular Biology Graduate Group).</p> <p><i>Troponin Isoforms in Development</i>; James H. Marden, Penn State; 2 p.m., Physiology Conference Room, 4th floor, Richards Building (Pennsylvania Muscle Institute).</p> <p><i>Playwrighting and Theatre from the Urban Native-American Experience</i>; E. Donald Two-Rivers, poet, playwright, performance artist; 3-4:30 p.m.; Room 511, Annenberg Center (Student Performing Arts, Theatre Arts Program, Greenfield Intercultural Center).</p> <p><i>Controllability and Resiliency Diagnosis in Process Design</i>; Daniel Lewin, Technion-Israel Institute of Technology; 3:30 p.m.; Room 337, Towne Bldg (Chemical Engineering).</p> <p><i>The Theory of Planned Behavior: Automatic Responses, Habits, and Reasoned Action</i>; Icek Aizen, University of Massachusetts; 3:30 p.m.; Room 109, Annenberg School (Psychology).</p> <p><i>TBA</i>; Joel Shapiro, sculptor, New York; 6 p.m.; Room B-3, Meyerson Hall (GSFA).</p>	<p><b>10</b> <i>TBA</i>; Marcelin Pleynet, Ecole Nationale Superieure de Paris, France; 4:30-6 p.m.; Cherpack Lounge, Williams Hall (French Institute).</p> <p><i>TBA</i>; Roberts Lecture; 4-5:30 p.m.; Room 100 (Law School).</p> <p><i>Visiting Artist Series</i>; Ann Harris, painter, Portland, Maine; 5 p.m.; B-5 Meyerson Hall (GSFA).</p> <p><i>Biosynthesis of Deoxyribonucleotides: An Iron-Sulfur Center for Activation of Ribonucleotide Reductase</i>; Marc Fontecave, CEA Grenoble, Université Joseph Fourier; noon; Austrian Auditorium, 1st floor, Clinical Research Bldg. (Biochemistry &amp; Biophysics).</p> <p><b>11</b> <i>Acquisition of Meiotic Competence During Spermatogenesis</i>; Mary Ann Handel, Univ. of Tenn.; noon; Hirst Aud., Dulles Bldg., HUP (Ctr. for Research on Reproduction &amp; Women's Health).</p> <p><i>Gay Talese Discusses the Important Elements of Literary Non-Fiction</i>; author, <i>Unto the Sons</i>; noon-1 p.m.; WH; info: 573-WRIT (Writers House).</p> <p><i>Vaccines for the 21st Century: The Interface between Microbial Genomics, DNA Vaccines, and Malaria</i>; Stephen Hoffman, Naval Medical Research Center; 4 p.m.; Grossman Auditorium, Wistar Institute (Wistar Institute).</p> <p><b>12</b> <i>Recent Work</i>; Oliver Lang, L.W.P.A.C. Lang Wilson Practice in Architecture Culture, New York; Universidad Federico Santa Maria, Chile; 6 p.m.; B-3 Meyerson Hall (GSFA).</p> <p><i>Le Multiculturalisme en Question: Debats Comparatifs (France, Etats Unis et Canada)</i>; Denis Lacorne, Ecole des Sciences Politiques, France; 4:30-6 p.m.; Cherpack Lounge (French Institute).</p> <p><b>13</b> <i>Viral Diseases</i>; Elizabeth Feussner, consulting veterinarian; 10 a.m.-noon; Medical Alumni Hall, HUP (Laboratory Animal Medicine).</p> <p><i>Strategic and Organizational Adaptations of Urban Academic Health Centers to the New Health Care Environment</i>; Roger Bolger, President and CEO, National Association of Academic Health Medical Centers; noon-1 p.m.; LDI Auditorium (LDI Center for Health Policy Seminar Series).</p> <p><i>Gods, Whores and Poets: The Museum Garden—Theater of Pompey the Great</i>; Ann Kuttner, history of art; 3-5 p.m.; 201 Jaffe (History of Art).</p> <p><i>How the Last Elections Were Won and Lost</i>; Eric Schnurer, political consultant; 3-5 p.m.; Fels Center (Fels Center of Government).</p> <p><b>16</b> <i>TBA</i>; Frank Sulloway, M.I.T.; 3:30 p.m.; Room 109, Annenberg School (Psychology).</p> <p><i>Smooth Spaces</i>; Wiel Arets, IR Wiel Arets Architect &amp; Associates BV, Maastricht, Holland; 6 p.m.; B-1 Meyerson Hall (GSFA).</p> <p><i>Race and Ethnic Relations</i>; Bernita Berry, keynote speaker of UMC Unity Week; 7:30 p.m.; Terrace Room, Logan Hall (United Minorities Council).</p> <p><b>17</b> <i>Iron-Sulfur Protein as a Molecular Switch in Electron Transfer</i>; Ulrich Brandt, Universitaetsklinikum Frankfurt; noon; Austrian Auditorium, 1st floor, Clinical Research Bldg. (Biochemistry</p>	<p>&amp; Biophysics).</p> <p><i>Multiple Intelligences</i>; Ted Abel, biology; 1 p.m.; Faculty Club (Penn Women's Club).</p> <p><i>Have Faith in Inner-City Youth: How Church-Anchored Public/Private/Nonprofit Partnerships Can Help America's Most Truly Disadvantaged Children Avoid Violence, Achieve Literacy, and Access Jobs</i>; John J. DiIulio, Jr., Princeton; 3-4:30 p.m.; B-1 Meyerson Hall (Steinberg Symposium, SAS).</p> <p><i>The Importance of Faith-Based Initiatives</i>; panel discussion moderated by John J. DiIulio, Jr., Princeton; 5:30-7:30 p.m.; B-1 Meyerson Hall (Steinberg Symposium, SAS). <i>See Conferences.</i></p> <p><i>Women in Politics</i>; Happy Fernandez, first female candidate for mayor of Philadelphia; 6:30-7:30 p.m.; Sweeten Alumni House; talk is free, optional light supper at 5:30; \$15 (Alumni Relations).</p> <p><i>Hands Off Kosovo!</i>; James George Jatras, policy analyst, U.S. Senate Republican Committee; 7 p.m.; Penn Newman Center Library (Orthodox Christian Fellowship at Penn).</p> <p><b>18</b> <i>Lipoprotein Regulation of Tissue Factor Expression in Vascular Smooth Muscle</i>; Guy Chisolm, Lerner Research Institute, Cleveland Clinic Foundation; noon-1 p.m.; M100, John Morgan Bldg. (Pharmacology).</p> <p><i>HIV Pathogenesis and Treatment</i>; David Ho, The Aaron Diamond AIDS Research Center, NY; 3 p.m.; Grossman Aud., Wistar Institute (Wistar Institute).</p> <p><i>Innovations in Urban Public Management</i>; panel discussion moderated by John J. DiIulio, Jr., Princeton; 4-6 p.m.; B-1 Meyerson Hall (Steinberg Symposium, SAS).</p> <p><i>Honorable A. Leon Higginbotham, Jr. Lecture</i>; Patricia Williams, Columbia Law School; 5 p.m.; Law School; info: 898-4965 (Afro-American Studies).</p> <p><i>Cinq a Sept</i>; vin, pate et bonne compagnie; 5-7 p.m.; Logan Hall, Terrace Room (French Institute).</p> <p><i>Transgenic Approaches to Study the Role of Protein Kinase A in Neuronal Function</i>; Ted Abel, biology; noon; Hirst Auditorium, Dulles Bldg, HUP (Center for Research on Reproduction and Women's Health).</p> <p><b>19</b> <i>TBA</i>; Frank Sonnichsen, Case Western Reserve University; 2 p.m.; Grossman Auditorium, Wistar Institute (Biochemistry &amp; Molecular Biophysics Graduate Students).</p> <p><i>Political Leadership in America's Cities</i>; panel discussion moderated by John J. DiIulio, Jr., Princeton; 4-6 p.m.; Harrison Auditorium, University Museum (Steinberg Symposium, SAS).</p> <p><i>Theorizing in Particular: Professor Tom Levin, speaking on "The Aesthetics of Surveillance"</i> ; Thomas Levin, Princeton University; assoc. editor, <i>The Musical Quarterly</i>; 7 p.m.; WH; info: 573-WRIT (Writers House).</p> <p><b>20</b> <i>Mice: Bacterial, Mycotic, Parasitic, Neoplastic and Metabolic Diseases</i>; Richard B. Huneke, DuPont Merck Pharmaceutical Co.; 10 a.m.-noon, Medical Alumni Hall, HUP (Laboratory Animal Medicine).</p> <p><i>Time for a New Analytical Para-</i></p>	<p><i>digm for Pharmacoeconomics and Outcomes Research</i>; Bryan Luce, CEO, MEDTAP International, Inc.; noon-1:30 p.m.; Colonial Penn Center Auditorium (LDI Center for Research).</p> <p><i>The History of Radiation Monitoring at Three-Mile Island</i>; Sidney Porter, Porter Consultants, Inc.; 12:15-1:45 p.m.; Room 1203, Steinberg Hall-Dietrich Hall (Institute for Environmental Studies).</p> <p><i>Conceptualism Since the 1960's</i>; Terry Smith, University of Sydney; 3-5 p.m.; 201 Jaffe (History of Art).</p> <p><i>Coincidence Detection by Single Cells and Single Spines</i>; Bert Sakmann, MPI fuer Medizinische Forschung, Heidelberg, Germany; 4-5 p.m.; Austrian Auditorium, 1st floor, Clinical Research Bldg. (Pharmacology).</p> <p><b>23</b> <i>Pericentromeric Duplications and the Complex Evolution of the Human Genome</i>; Evan Eichler, Case Western Reserve University; 12:15 p.m.; Austrian Auditorium, 1st floor, Clinical Research Bldg. (Genetics).</p> <p><i>How the Cell Moves Its Body</i>; Gary G. Borisy, University of Wisconsin; 2 p.m.; Physiology Conference Room, 4th floor, Richards Building (Pennsylvania Muscle Institute).</p> <p><i>Evolution of Pore-Structure During Dip-Coating and Drying of Mesoporous Ceramic Films</i>; Richard Cairncross, Drexel; 3:30 p.m.; Room 337, Towne Bldg. (Chemical Engineering).</p> <p><i>Synaptic Plasticity and Memory Storage: Genetic Approaches</i>; Ted Abel, biology; 3:30 p.m.; Room 109, Annenberg School (Psychology).</p> <p><i>Empire and Chinese Southern Drama</i>; Tina Lu, East Asian studies; 4:30 p.m.; Logan Hall 402 (Center for East Asian Studies).</p> <p><i>Recent Work</i>; Mary Miss, artist, New York; 6 p.m.; B-1 Meyerson Hall (GSFA).</p> <p><i>Talking Film &amp; Alumni Writers Series: Alec Sokolow</i>; screenwriter, author of <i>Toy Story</i> and others; 7-10 p.m.; WH; info: 573-WRIT (Writers House).</p> <p><b>24</b> <i>Iron-Sulfur Clusters: Do We Know Yet All the Reasons Why?</i>; Dennis Flint, E.I. DuPont de Nemours and Company; noon; Austrian Auditorium, 1st floor, Clinical Research Bldg. (Biochemistry &amp; Biophysics).</p> <p><b>30</b> <i>Genetic Analysis of the LDL Receptor Gene Family in Mice</i>; Joachim Herz, University of Texas; 12:15 p.m.; Austrian Auditorium, 1st floor, Clinical Research Bldg. (Genetics).</p> <p><i>Mitotic Motors in S. Cerevisiae</i>; M. Andrew Hoyt; Johns Hopkins University; 2 p.m.; Physiology Conference Room, 4th floor, Richards Building (Pennsylvania Muscle Institute).</p> <p><i>A Multiscale Approach to Chemical Reactors: From Partial Oxidation to Complete Combustion</i>; Dionisios Vlachos, University of Massachusetts; 3:30 p.m.; Room 337, Towne Bldg. (Chemical Engineering).</p> <p><i>TBA</i>; Bruce McEwen, Rockefeller University; 3:30 p.m.; Room 109, Annenberg School (Psychology).</p> <p><i>Semiotic Field and Modality</i>; Hiroshi Hara, architect of Kyoto Station Building in Japan; 6 p.m.; B-1 Meyerson Hall (GSFA).</p>

FITNESS/LEARNING	READINGS ETC.
<p><i>CGS Special Programs</i>; Registration required. For info, call 898-6479, or visit <a href="http://www.sas.upenn.edu/CGS/">www.sas.upenn.edu/CGS/</a>.</p> <p><i>Class of 1923 Ice Ring</i>; Mon. &amp; Wed., 1:30-3 p.m.; Tues., noon-1:30 p.m.; Thurs., 7-9 p.m.; Fri., 8-10 p.m. &amp; midnight-2 a.m.; Sat., 12:30-2:30 p.m., 8-10 p.m. &amp; midnight-2 a.m.; Sun., 12:30-2:30 p.m.; 3130 Walnut; info: 898-1923 or <a href="http://www.upenn.edu/icerink">www.upenn.edu/icerink</a> .</p> <p><i>Jazzercise</i>; 5:30-6:30 p.m.; Tues. and Thurs.; Stokes Auditorium, CHOP; call for directions; first class free; \$3.50/class, \$2.50 students; Carolyn Hamilton, 662-3293 (days), (610) 446-1983 (evenings).</p> <p><b>3</b> <i>University Reading and Writing Group</i>; Marge Murray and Ruth Hoskins, writers; read from own works and discuss an assigned reading; 6:30-8:30 p.m.; Penn Bookstore Cafe; info: Marge, 545-9356, or Ruth 242-6106. <i>Also November 19.</i></p> <p><b>5</b> <i>Nutrition &amp; Disease Prevention</i>; 12-12:50 p.m.; HUP; Founders Bldg-Plaza A. (Health &amp; Disease Management).</p> <p><b>11</b> <i>Walk through a Medieval Labyrinth</i>; 12:30 p.m.-1:45 p.m.; free to all Penn employees, faculty and students; St. Stephen's Episcopal Church, 10th &amp; Ludlow St.; meet at 3601 Locust Walk; info: call Mimi Iijima at 386-1530 (Christian Association).</p> <p><b>12</b> <i>Ethnohistory Workshop: German Missionaries</i> ; 4:30 p.m.-6:30 p.m.; History Lounge, 3401 Walnut St. (History).</p> <p><b>English Language Programs</b> 21 Bennett Hall, 898-8681, <a href="http://www.sas.upenn.edu/elp">www.sas.upenn.edu/elp</a></p> <p><b>11</b> <i>TOEFL Preparation</i>; Mondays and Wednesdays; \$320. <i>Through December 16.</i></p> <p><i>Oral Presentation Workshop</i>; Wednesdays; \$160. <i>Through December 16.</i></p> <p><b>12</b> <i>GMAT Essay Writing</i>; Thursdays; \$100. <i>Through December 3.</i></p> <p><i>Speaking and Listening</i>; Tuesdays</p>	<p>period to follow; 5:30 p.m.</p> <p><b>9</b> <i>LIVE at the Writers House</i>; taping for WXPN; 8 p.m.</p> <p><b>11</b> <i>Speakeasy: Poetry, Prose, and Anything Goes</i>; an open mic. performance night; 8-10 p.m. <i>Also November 25.</i></p> <p><b>12</b> <i>Poet Rae Armantrout Reads!</i>; Armantrout teaches at the University of California, San Diego; 6 p.m.</p> <p><b>13</b> <i>Rabbinic Fantasies : Imaginative Narratives from Classical Hebrew Literature</i>; editors David Stern and Mark Mirsky read from and discuss their anthology; noon.</p> <p><i>Jan Samantha Chang</i>; teaches creative writing at Stanford; 5 p.m.</p> <p><b>14</b> <i>Laughing Hermit Reading Series</i>, hosted by Robin Hiteshow, presents poet Margaret Holley; 2-3 p.m.</p> <p><b>15</b> <i>LIVE at the Writers House</i>; airs on WXPN, 88.5 FM; 10:30 p.m.</p> <p><b>16</b> <i>Translating Oral Poetry: A Reading and Discussion with Homer Translator Stanley Lombardo</i>; Stanley Lombardo is a professor of classics at the University of Kansas and a gifted translator; 6 p.m.</p> <p><b>17</b> <i>The Alumni Writers Series presents Stephen Fried</i>; author of <i>Bitter Pills</i> (Bantam, 1998), reads; 6 p.m.; Arts Cafe.</p> <p><b>24</b> <i>Reading: Poet Nicole Markotic</i>; teacher, University of Calgary, Canada; 6 p.m.</p>
<div>November</div> <div>AT PENN</div>	