

# Almanac

Tuesday, February 23, 1993

Published by the University of Pennsylvania

Volume 39 Number 23

## INSIDE

- News Briefs; PennNet Shutdown, p. 2
- Bulletins; JIO Report for January, p. 3
- Navigating the Network, pp. 4-5
- Growing Roster of Presidents, pp. 6-7
- Faculty Appointments & Promotions, p. 7
- Research Foundation & Its Awards, pp. 8-9
- Tax-Deferred Annuities, p. 10
- CrimeStats, Bulletins, Update, pp. 11-12

Pullout: March at Penn



Choice for Executive VP: Janet Hale

## Executive Vice President: Janet Hale of OMB

President Sheldon Hackney will take to the Board of Trustees on March 19 the name of Jane Hale, former associate director for economics and government in the Office of Management and Budget (OMB), as Executive Vice President of the University.

Ms. Hale is expected to take office sometime in March as the University's chief administrative officer, reporting to the President and responsible for overall leadership in finance, public safety, human resources, facilities, government relations, business services and real estate.

Dr. John Wells Gould, the executive director of the Office of the President, has been acting executive vice president since Dr. Marna Whittington left the

post September 30 to join the investment firm of Miller, Anderson & Sherrerd in West Conshohocken.

"I am delighted to welcome Jane Hale to Penn, and feel fortunate that we were able to attract such an outstanding individual to this position," Dr. Hackney said. "She brings with her a wealth of experience in administration and financial management, and I am confident that with her leadership, Penn will continue to flourish as the national model for research universities."

As associate director for economics and government at OMB from 1989 until earlier this year, Ms. Hale was the senior OMB official responsible for budget and policy development, regulatory reform, (continued next page)

## FROM THE PRESIDENT

*Restructuring the University II:*

### The Cost-Containment Oversight Committee

Last month in these pages ("Looking Ahead," *Almanac* January 12), I outlined some of the reasons I believe the University must undertake a continuing effort over the next few years to reduce administrative costs by "re-engineering" all of our basic administrative processes and activities. Among those reasons are the significant growth in administrative costs, both in the schools and the central administration, during the 1980s and the unrelenting pressures on school and center budgets caused by our ever more tightly-constrained funding sources. The "bottom-line" of that assessment is, quite literally, the need to reduce our administrative cost base across the University by 15 percent over the next four or five years.

As we move through this process, the University is committed to protecting Penn's people and its academic core from thoughtless destabilization. However, we are also committed to re-examining every administrative process and activity—both centrally and in the schools and resource centers—to achieve the needed cost reduction.

This requires a well-coordinated reassessment program, not crude budget slashing. A joint Faculty Senate-Administration committee on cost containment (*Almanac* January 19) has recommended that I appoint a twelve-member Cost-Containment Oversight Committee to monitor the ongoing and extensive efforts undertaken by the University administration and the deans of our twelve schools to reduce our administrative cost base. I am doing so, and I am pleased to announce that the following individuals have agreed to serve on the Oversight

#### Committee:

Michael Aiken, Provost (co-chair)  
Marshall E. Blume, Howard Butcher  
Professor of Finance  
Claire M. Fagin, Professor and Dean Emeritus  
of Nursing  
Gregory Farrington, Dean, School of  
Engineering and Applied Sciences  
Raymond Fonseca, Dean, School of Dental  
Medicine  
Thomas Gerrity, Dean, The Wharton School  
Steve Gelling, Executive Director,  
Resource Planning and Budget  
John Wells Gould, Acting Executive  
Vice President (co-chair)  
Patrick Harker, Professor of Decision  
Sciences  
Marvin Lazerson, Dean, Graduate School  
of Education  
Rick Nahm, Senior Vice President for  
Planning and Development  
Lee D. Peachey, Professor of Biology

The Committee will begin its work in early March so as to gain from the experience and insight of several administrative members who will be leaving the University over the summer. As they depart, I will appoint their successors or other members of the Senior Planning Group to replace them on the Oversight Committee.

The Cost-Containment Oversight Committee will advise me and the President's Advisory Group (composed of the deans and senior administrators) as it monitors the full range of our efforts to reduce administrative costs. Among these are the Total Quality Management Teams (now numbering more than 20) at work in many administrative areas and several of the

schools; process re-engineering teams that will be reworking such fundamental administrative processes as procurement, personnel and payroll; Project Cornerstone; and efforts to identify new sources of revenue (e.g., revenue-producing use of facilities during the summer months).

Even as we strive to do more with less, I want every member of the Penn community to understand that we are in much better financial shape than some of our peer institutions that are being featured in the press. Prudence in the past gives time now to forestall a future crisis by redesigning our administrative supports in a deliberate fashion.

To that end, we are undertaking a general re-engineering of all of the University's administrative and service processes, both in the central administration and in the schools, with the goal of achieving the highest possible quality at the lowest cost. The budgets of the schools and centers, as well as administrative offices, will continue to experience great pressures. Deans, directors, department heads, managers, and business administrators all will continually have to rethink their operations and budgets to achieve the greatest efficiency possible.

We can expect these and other changes to have a major impact on the way the University does business in the near future and throughout the coming decade. We simply cannot afford to do "business as usual." But with your help, and with the advice of the Cost-Containment Oversight Committee, I am confident that we shall be able to turn a climate of adversity to Penn's long-term advantage and to lay the foundations of a strong future of international leadership in education, research, and public service.

*Sheldon Hackney*

Janet Hale from page 1

and financial management for the departments of Treasury, Transportation, Commerce, Justice, and 25 smaller agencies whose total annual budgets exceed \$70 billion.

A 1971 alumna of Miami University in Ohio, Ms. Hale took a master's degree in public administration from the Kennedy School of Government at Harvard in 1980. After serving in the U.S. Department of Housing and Urban Development from 1981 to 1986, Ms. Hale spent three years as assistant secretary for budget and programs with the Department of Transportation before joining OMB.

"I'm excited about coming to Penn, and welcome the opportunity to work with the students, faculty and staff of such a distinguished university," Ms. Hale said. These are challenging times for higher education, and I am looking forward to the new opportunities this position presents."

## To NYU: Jean Avnet Morse

The College's Deputy Associate Dean Jean Avnet Morse will leave Penn at the end of the spring term to become Associate Dean for Administration of NYU Law School.

Ms. Morse is an alumna of Wellesley and of Harvard Law who joined Penn in



1989. During her years in office the College has introduced the peer advising system for first-year students, created the position of Assistant Dean for Advising and Minority Affairs, revised and supplemented its advising and other publications, assumed responsibility for the School's teaching assistant orientation program, and adopted new computer and record-keeping systems.

Dean Morse also served as Acting Assistant Provost during the 1992 academic year, and taught "The Family and the Law" in the Sociology and Women's Studies Departments.

At NYU, she will be responsible for all aspects of nonacademic administration of the Law School, including fiscal management, human resources, student services, student housing, management information systems, facilities management, and administrative services.

## General Counsel in New Quarters

The Office of the General Counsel, closed for moving February 22 and 23, will reopen for business on February 24 in its new location at 221 College Hall. The move for General Counsel Shelley Green and associates is one of several taking place this term as College Hall renovations continue.

Some relocations (including the President's Office) were announced in *Almanac* February 2, page 7.

**Provost's Area:** On or about March 5, Deputy Provost Walter Wales is to move to 110 College Hall and Vice Provost for Graduate Education Janice Madden to 303 College Hall.

## March 30 Academic Career Conference: Looking Ahead

The Vice Provost for Graduate Education and the Career Planning and Placement Service will jointly sponsor a conference from 4 to 6:30 p.m. on Tuesday, March 30, open to all members of the University but aimed primarily at graduate students planning their programs and their careers. To sign up, call Ext. 8-7530. Three topics are on the program:

4 p.m.: *Trends in Higher Education*, led by Susan Shaman, assistant vice president for planning and analysis, Institute for Research in Higher Education.

5 p.m.: *Being a Successful Graduate Student: A Program for First, Second and Third Year Students*, presented by Dr. Franklin Allen of the Wharton School, Dr. Larry Gross of the Annenberg School for Communication, and Dr. Rebecca Bushnell of SAS/English.

5 p.m.: *Everything You Wanted to Know About an Academic Research Career*, moderated by Dr. Janice Madden, vice provost for graduate education and professor of regional science with SAS's Dr. David Brownlee, history of art, and Dr. Sally Zigmund of biology, and Dr. John Fantuzzo of the Graduate School of Education.

## PennNet Shutdown: Weekend of Spring Break

During the first weekend of Spring Break (March 5 through 7), PennNet services will be disrupted throughout the campus while specialists remove contamination introduced into the room housing the central PennNet hub during College Hall renovations. The projected schedule:

12 noon to 6 p.m. Friday	Partial service disruption.
6 p.m. Friday to 3 a.m. Sunday	Full service disruption
3 a.m. to 1 p.m. Sunday	Only key services operational
1 p.m. Sunday to 7 a.m. Monday	All services operational, but some network instability expected.

(For more details, please see *What is Affected* and *What is not Affected*, below.)

Please note that this is a complex task and there is some possibility that some of the work could take longer than estimated. In addition, the ability of DCCS to respond to other problems is extremely limited because all of the maintenance staff is directly involved in the clean-up.

We recognize the importance of keeping the community informed, so we encourage you to contact the PennNet Operations Center (898-2728) for status reports. We also recognize that there is a very slight risk that the outage could extend beyond the weekend, and we are developing plans to assess that risk throughout the cleaning and to notify users as early as possible.

Finally, please check PennInfo periodically between now and March 5 for updates to these plans.

— George P. McKenna, Director of Network Operations, DCCS

### What is Affected

*Between noon and 6 p.m. Friday, March 5:*

Removed from service during Friday afternoon will be the ISN Modem Pool (898-8184), the high-speed modem pool (898-0834), the Lexis Gateway, the Telnet <—> ISN gateway, the ISN <—> Telnet gateway, the data communications links to 4200 Pine and International House, PennNet Residential Services, and the communications link to the New Bolton Center providing voice and data service.

*Between 6 p.m. Friday and 5 a.m. Sunday:*

Beginning at 6 p.m. Friday, the remaining equipment in College Hall will be shut down. This will essentially stop all interbuilding ethernet traffic (i.e., electronic mail, Telnet, ftp, nfs, tn3270, Gopher) on campus. (Please note: Electronic mail sent during the service outage should not be lost. Instead, it will be queued and delivered when service is restored.) Finally, local asynchronous communications via the ISN (the "Dial:" prompt) in College Hall, Logan Hall, the Furness Building, the Smith Building, the Music Building, Johnson Pavilion, Houston Hall, Nursing Education Building, Williams Hall, Weightman Hall, White Training House, the University Museum, the Penn Towers, and the Clinical Research Building will not function.

At approximately midnight Saturday, we will begin to restore service; and by 5 a.m. Sunday, interbuilding ethernet traffic, a portion of the high-speed modem pool, local asynchronous communications in the buildings being serviced out of College Hall, and the telephone and data communications to New Bolton Center should all be operational.

*Between 3 a.m. Sunday and 1 p.m. Sunday:*

After the critical services are restored, DCCS will begin to restore the remaining services with the target of having full service at 3 p.m.

*Between 1 p.m. Sunday and 7 a.m. Monday:*

This time is reserved for testing and resolving any problems that might occur. We expect full service to be available, but there is an increased risk of individual failures because most failures occur at power-up and a large number of devices will be turned on as part of the clean-up, increasing the risk of unrelated failures.

### What is not Affected

Asynchronous communications via the ISN ("Dial:" prompt) should be unaffected unless either the source or destination is serviced out of College Hall (please see list of buildings above). Thus access to UMIS or LIBRARY from the "Dial:" prompt should work from most locations on campus. LAN communications (i.e., Novell) within a given building should work provided both the client and the server are in the same building. The old Telex terminal network to UMIS and the IBM 3270 networks to PENNDRLS and the LIBRARY should also work.

— G.P.McK.

## Alice Paul/Leonore Williams Nominations

Nominations are open for both the Alice Paul and Leonore Williams Awards, with deadlines of *March 5* for the Leonore Williams Award and *March 12* for Alice Paul Awards.

Alice Paul Awards, which carry cash prizes and honor several undergraduate and graduate women each year for "outstanding service to women" are named for the Penn School of Social Work alumna who founded the National Women's Party and wrote the original Equal Rights Amendment. They are sponsored by the Association of Women Faculty and Administrators (AWFA), the Women's Center, and the Women's Studies Program.

The Leonore Rowe Williams Award, sponsored by AWFA and endowed by the late widow of the former Dean and Provost Edwin B. Williams, is given to an outstanding female leader or scholar each year. Its recipients have included R. Jean Brownlee, Jean Crockett, Helen Davies, Adelaide Delluva, Michelle Fine, and Joan Gotwals.

Nominations for either award should include the nominee's name, class/position, address and phone number; the nominee's achievement and why her contribution is extraordinary; the nominator's name, position, campus address and phone number. Alice Paul Award nominations go to: Demie Kurz, Women's Studies, Suite 590, 3440 Market Street/3325. Nominations for the Leonore Williams Award go to: Association of Women Faculty and Administrators, c/o Jo-Ann Verrier, Law School, 3400 Chestnut Street/6204; e-mail: jverrier@oyez.law.

## HERS Institute Deadline: March 5

The Eighteenth Annual Summer Institute for Women in Higher Education Administration (HERS) will be held June 27 through July 23. HERS is a residential program on the Bryn Mawr College campus offering women faculty and administrators intensive training in educational administration.

Candidates may be sponsored by their own deans or departments. The deadline for application through the University selection process is *March 5*. For applications or more information, please contact Debra Fickler at Ext. 8-7660 or send an e-mail message to fickler@A1.QUAKER.

## What is Women's Health Jeopardy?

In recognition of the year's theme on *Women Making A Difference at Penn*, Student Health is sponsoring Women's Health Jeopardy Night in April—but University organizations must register their teams of three (two players and an alternate) by *March 5*.

Faculty/staff organizations as well as students can compete by answering questions in such categories as "Disease of the Rich & Famous" and "Those Raging Hormones."

Host of the campus competition will be Joanne Rafferty, director of the Penn Fitness Center and a local stand-up comedienne. The competition takes place April 14 at 8 p.m. in Houston Hall Auditorium and all members of the University are invited to attend. Call Ext. 3-3525 for reservations and more information.

# OFFICE OF THE JIO

## Incidents in January

This is the January monthly report from the Judicial Inquiry Office which will appear in the *Daily Pennsylvanian*, *Almanac*, *The Graduate Perspective*, and *Visions* and is to inform the University community at large of the types of complaints brought to this office in any given month during the academic year. The information is presented in aggregated format, by complaint type. The number of complaints are indicated by Year to Date (YTD) as well as for the immediately previous month. The number of withdrawn or dropped complaints are noted, as well as those for which an informal settlement was negotiated, and for which the investigation is still pending.

It is important to recognize that there are certain artifacts in the data as presented. First, with any given complaint, there may be more than one respondent and different outcomes/charges per respondent. Therefore, while the current total number of complaints is 72, the total number of respondents is 102. Secondly, with any given complaint, there may be multiple charges per complaint or per respondent. Thus, while the current total number of complaints is 72, the total number of potential charges is 122. Thirdly, during the process of an investigation of a complaint, additional respondents and/or charges may be added. So, while the current number of respondents is 102 and the current number of potential charges is 122, both of those numbers may change as any investigation progresses and draws to a close. And lastly, as an investigation comes to a close, a complaint may be dropped/withdrawn due to lack of evidence to support the complaint, the complaint type may change, or the complainant may withdraw his/her complaint. Therefore, while there are currently 44 potential charges pending, this number does not indicate that all these charges will result in settlements, nor does it indicate that if a settlement is achieved the charges will be the same as the original complaint.

If anyone has any specific questions regarding the data presented in the chart, please contact the Judicial Inquiry Office at Ext. 8-5651. We will gladly answer your questions to the best of our ability.

— Catherine C. Schifter  
Interim Judicial Inquiry Officer

## Judicial Inquiry Office Incident Report for January, 1993

Type of Complaint	YTD <sup>1</sup>	Number Reported <sup>2</sup>	Number Withdrawn <sup>3</sup>	Number Settled <sup>4</sup>	Number Pending <sup>5</sup>
Code of Academic Integrity	14	7			
Cheating	12	7	4		8
Plagiarism	1			1	
Assisting Another	1		1		
Code of General Conduct	108	25			
Alcohol violations	12		3	8	1
Assault	8	1	5		3
Disorderly Conduct	12	2	4	8	
Drug violations	1	1			1
Excessive Noise	3			2	1
Fake ID	2			2	
Fire Safety	23	5	5	10	8
Harassment	9		3	1	5
Indecent Exposure	1			1	
Malicious Mischief	4	3		1	3
Obscene Phone Calls	1				1
Other violations	2	2			2
Propulsion of Object	5	2		5	
Racial Harassment	7	5	2		5
Sexual Assault	4	1	2		2
Sexual Harassment	2		2		
Security Violations	1			1	
Theft	9	2	3	4	2
Threats	1	1			1
Vandalism	1				1
<b>Totals:</b>	<b>122<sup>6</sup></b>	<b>32</b>	<b>34</b>	<b>44</b>	<b>44</b>

<sup>1</sup> YTD stands for Year to Date. These figures indicate the number of complaints which have been reported to the JIO from September 1, 1992 through January 31, 1993.

<sup>2</sup> Number Reported refers to the number of cases which came to the attention of the Office of the JIO during this month only. Cases come to the attention of this office by one of three main sources: a copy of a University of Pennsylvania Police report is forwarded to us, a copy of an incident report is forwarded to us from one of the University residences, or a complainant comes directly to this office to file a complaint.

<sup>3</sup> Number Withdrawn refers to those complaints for which either the complainant has decided to withdraw the complaint or the Office of the JIO determines through its investigation that there is not enough evidence to determine guilt. There is, therefore, no action in the case.

<sup>4</sup> Number Settled refers to those complaints for which an informal settlement has been reached through the Office of the JIO. An informal settlement indicates an admission of guilt of the complaint and sanctions have been determined and imposed by the JIO.

<sup>5</sup> Number Pending refers to those complaints for which the investigations were not completed at the time of this report. This occurs due to 1) time when complaint was received in the Office of JIO (i.e., late in the month), 2) discovery of need for further investigation, 3) difficulty in contacting people involved in complaint, 4) scheduling problems.

<sup>6</sup> This number represents the total number of potential charges, not the total number of respondents to complaints or the total number of complaints.



# Navigating the Internet: Tools for Discovery

by Judy Smith and Daniel Updegrove

Franklin, Penn's online library catalog, PennInfo, our campus-wide information system, and Whois, the online electronic mail directory, are three popular resources on PennNet, the campus data network. Since passwords are not required for these systems, many users are, in fact, affiliates of other universities, government agencies, or industrial firms. Their link to PennNet is the Internet, a network of more than one million computers in forty countries.

Penn students, faculty, and staff, in turn, can access thousands of resources around the world: library catalogs, campus information systems, directories, databases, and archives. The number of institutions joining the Internet, the number of individuals with access, and the number of resources being contributed to this public domain continue to grow rapidly. But how does one navigate in such a vast sea of information?

Until recently, only intrepid researchers and networking gurus understood enough about network addressing, user command interfaces, and technical tricks to use the Internet for more than electronic mail. New navigation tools—easy to use, widely available, and free—have dramatically changed this. Now anyone can, in a matter of minutes, learn to explore from Sweden to Singapore in search of scholarly, technical, or avocational treasure. (See the "Internet hunt," sidebar [p.5] for examples.)

Five Internet navigation tools—Archie, Gopher, Veronica, WAIS, and World-Wide Web—are introduced in this article, followed by instructions on accessing Gopher, which provides links to the other four tools, as well as to PennInfo. As with PennInfo, these tools are usable via any computer that can emulate a VT100 terminal, but additional power and ease of use are available with versions that operate as clients on Macintoshes and other workstations with IP/ethernet connections.

## Archie

The Internet community has been amassing text, image, software, and database resources for over twenty years. Historically, these resources have been stored in public repositories known as anonymous FTP servers. FTP is the Internet-standard high-speed file transfer protocol, used for exchange of private information by trusted parties with passwords as well as for publishing information without passwords, i.e., anonymously.

Hundreds of archives now exist but, up until a year ago, no one tracked them. Archie (ARCHive server) was developed at McGill University to index the contents of all FTP servers and provide keyword searching of the index. Its approach is simple but powerful: Every night it re-indexes roughly one thirtieth of the servers; the result is a database that is completely refreshed each month.

Although Archie enables you to locate information, it does not allow you to view or retrieve the information. To do that, you need FTP software on an IP-connected workstation or host (see *Penn Printout*, March 1992).

## WAIS

Wide Area Information System (a joint project of Apple Computer, Dow Jones, KPMG Peat Marwick, and Thinking Machines Corporation) provides a uniform interface to many full-text databases, together with a

sophisticated "relevance search" capability. You can search any WAIS database using any word or phrase and the system will return a menu of documents, ordered from more to less relevant. WAIS databases are commonly collections of related data (*The Bryn Mawr Classical Review*), primary source documents (Clinton speeches), or reference works (*CIA World Fact Book*, *Roget's Thesaurus*). There are currently almost 400 WAIS databases, and new ones appear frequently.

Since it can be difficult to determine the focus of a WAIS database from its name, a Directory of Servers, itself a WAIS database, was developed. You can search this directory for topics that interest you, and it will suggest WAIS databases for you to explore. For example, you could search the directory using the keyword "religion," and you would be referred to three WAIS databases: the Book of Mormon, the Qur'an, and the Bible.

## Gopher

Gopher began as the University of Minnesota's version of PennInfo, a menu-driven campus-wide information system (CWIS). Gopher's simplicity as a distributed, client/server CWIS led to its rapid adoption by other institutions, some of which developed new client or server software for desktop or host computers and contributed them to the Gopher software archive (accessible via anonymous FTP, naturally). Soon thereafter, Minnesota offered to provide a menu of all Gopher servers that any other Gopher could access. The result was what networkers have been talking about for years: an interoperating set of information systems linking several hundred organizations around the world, all with a common user interface!

The next step in Gopher's evolution was addition of gateways to FTP, Telnet (the Internet standard remote terminal protocol), Archie, WAIS, and WWW. Gopher was thus transformed from an integrated set of CWIS programs into the most successful Internet navigation tool. But success became problematic: As the worldwide menu structure grew, locating information became increasingly tedious. Something like Archie was needed to help researchers locate information quickly in this new, ever expanding "Gopherspace."

## Veronica

In November, 1992 a search tool, Veronica, was contributed to Gopher by a team from University of Nevada at Reno. The original Veronica ("Very Easy, Rodent-Oriented, Net-wide Index to Computerized Archives," a comic acronym if ever there was one) provides a search through all menus using a single keyword. The result is a dynamically created menu of all Gopher resources that contain the keyword in their menus. Now, a second Veronica search tool has appeared—an indexed WAIS database extended to allow Boolean searches of menu documents. Although both searches are limited to words in menus (as opposed to the full text of documents), the combination of Veronica and Gopher results in a powerful capability to search for and retrieve information from all over the Internet, with the location of the information effectively irrelevant.

continued past insert

## In the Eyes of the Illini...

To sample one of the network navigation tools described in Penn Printout's article, *Almanac* used Gopher to call up the *Daily Illini* to see what people at the University of Illinois had to say about the selection of Penn's Michael Aiken as their next chancellor. On-line as of February 15 were five items including the initial news story, an interview with Dr. Aiken, two "reaction" stories (one quoting people at Illinois, the other people at Penn) and the editorial reprinted in full at right. The *Daily Illini* keeps its stories on-line for a year or more, so these and subsequent stories should still be available to Penn members who decide to go for Gopher (see "how-to," page 5).

Since *Almanac* is now on PennInfo, its contents also go over the Internet and are available to other campuses in the U.S. and abroad.

## Aiken will work for students ©

Editorial, pg. 12, Feb. 8, 1993, *Daily Illini*

Despite the disappointment that the selection of Michael Aiken as the new University chancellor means women and people of color are still absent from the University's top-level administration, students and faculty can be certain that Aiken will prioritize student's concerns. Aiken takes over the Urbana campus, beginning in July, in the midst of the tumultuous venture through a maze of budget shortages and heightening racial tensions. But the appointment of the University of Pennsylvania provost brings much optimism that these problems will be the new chancellor's top priorities. Aiken's record shows dedication to increasing racial and gender diversity in both the administration and the student body.

© Used with permission of the *Daily Illini*

## World-wide Web (WWW)

WWW was developed as a hypertext system at the Center for Nuclear Energy Research (CERN) in Geneva. It allows links with and between WWW documents and, like Gopher, provides access to other Internet resources and navigation tools. Although much admired by many in the Internet community for the elegance of its design, WWW has not proliferated as has Gopher, in part because WWW services are more complex to create and maintain, and in part because security restrictions at CERN restricted Internet access.

## Access to Gopher

From the PennNet annex: prompt, issue the command **telnet gopher** and you will be presented with a main menu including local and remote gopher servers, the Gopher-PennInfo gateway (that is, PennInfo menus and documents accessible via the Gopher user interface), as well as Archie, Veronica, WAIS, and WWW. Alternatively, use the "worldwide" command from within PennInfo. It should be noted that these navigation tools currently qualify for only "best effort" support from Data Communications and Computing Services (DCCS); no formal training, local documentation, or CRC help is planned. DCCS seeks feedback about the use of these tools; send comments to Al D'Souza, Director of Program Management, at 898-2429 or via e-mail to [dsouza@pobox.upenn.edu](mailto:dsouza@pobox.upenn.edu).

To obtain Gopher client (or server) software, FTP to <ftp.upenn.edu> or [boombox.micro.umn.edu](ftp.boombox.micro.umn.edu). Log in as "anonymous," use "guest" as your password, and change your directory to pub/gopher. Gopher clients may be set to "point to" the server at Minnesota; you are encouraged to reset your client to point to [gopher.upenn.edu](ftp.gopher.upenn.edu).

To obtain Archie, WAIS, or WWW client software for an IP/ethernet-connected computer, simply use Veronica and Gopher. (Alternatively, search PennInfo by the keyword "navigation" to determine FTP archive addresses, and then use FTP.) From a WWW client, point to <http://www.penninfo.upenn.edu>: 1962/ for access to PennInfo.

## Home again

The joint development effort, client/server paradigm, and no-cost distribution of these navigation tools is characteristic of the Internet. Consider:

- In 1991 Penn "imported" software developed at MIT for TechInfo, made minor modifications, and introduced PennInfo.
- A few months ago, MIT, in turn, installed the Gopher gateway to TechInfo, developed by Linda Murphy of DCCS.
- Penn's recommended communications software for IP-connected Macintoshes is NCSA Telnet, developed and distributed by the University of Illinois' National Center for Supercomputing Applications.
- Fetch, an elegant Macintosh implementation of FTP developed at Dartmouth, is now supported here.
- Eudora, a Mac-based electronic mail program from the University of Illinois, is being used in several offices at Penn.

Also characteristic of the Internet are a strong international flavor, creative programmers ("hackers" in the best sense), droll humor, and a growing number of enthusiastic and productive scholars navigating the net—without leaving their desks.

---

*Judy Smith is a Technical Writer for ISC Communications Group. Daniel Updegrove, Associate Vice Provost for Information Systems and Computing, is Executive Director of DCCS.*

Hopefully, Aiken will show this commitment in the selection of a new vice chancellor for academic affairs and the need to improve the recruitment and retention of students of color. In regards to working with the disenfranchised groups on this campus, Aiken shows much promise, having co-authored a book about student civil-rights activists and handled ROTC protests on his own campus. While Aiken will find himself in a new and public arena, battling for desperately needed state funding, he does have experience raising donations for academic programs. And both students and faculty at the University of Pennsylvania commend his accessibility and the improvements he helped bring to undergraduate teaching. Some have criticized the closed search process in which Aiken was selected; but without some secrecy, the University would only be left with second-rate leaders, not Michael Aiken.

## Internet Hunt

Below is a sampling of questions from the December and January Internet Hunts. This monthly treasure hunt was created by Rick Gates, Director of Library Automation at the University of California at Santa Barbara. For more information use the keywords "internet hunt" to search PennInfo.

- What is the atomic weight of boron?
- I'm trying to find a new book on the Internet by an author named Krol. Are there any local bookstores that might carry this? I live in Albuquerque, New Mexico.
- Early last month, U.S. president-elect Bill Clinton proposed a new technology policy. Where can I find the text of this proposed policy?
- I'm going to be in Denver, Colorado on the nights of Jan 22-25. Will the Denver Nuggets basketball team be playing at home on any of those nights?
- What was the total amount of sales in liquor stores in the United States in September of this year? Was this more than last year?
- I'm volunteering some time for a local hiking association. I'd like to know if anything's been written on the development of trails for the handicapped?
- I'm going to London next February. Is there a place that I can ask about some of the different pubs that might help take the chill away?
- Where is the ACM's SIGGRAPH '93 Conference being held next August?
- How does one say "Merry Christmas and a Happy New Year" in Czech?
- Is the Toyota Motor Corporation connected to the Internet?
- I read in an electronic journal somewhere that a conference was held in Padova, Italy on models of musical signals. I wrote down the name of a contact, "Giovanni De Poli." Can you find his e-mail address for me?
- What is the primary religion in Somalia?
- I understand that the Net is being put to use distributing information and pictures of missing children. Where can I find out more, and where can I find the pictures?
- Where can I find tables listing the nutritive values of different foods?
- What is the text of the 1st Amendment to the Constitution of the United States?

## Further Reading

Any one of the following books on the Internet is recommended for further reading:

- Kehoe, Brendan P. (1993) *Zen and the Art of the Internet: A Beginner's Guide to the Internet*, (second edition). Prentice Hall, Englewood Cliffs, NJ. (\$22.00) The first edition is also available via FTP at <ftp.upenn.edu> in the directory pub/DCCS.
- Krol, Ed. (1992) *The Whole Internet User's Guide and Catalog*. O'Reilly & Assoc., Inc. Sebastopol, CA. (\$24.95)
- LaQuey, Tracy, and Jeanne C. Ryer. (1992) *The Internet Companion: A Beginner's Guide to Global Networking*. Addison-Wesley, Reading, MA. (\$10.95)
- Tennant, Roy; John Ober; and Anne G. Lipon. (1993) *Crossing the Internet Threshold: An Instructional Handbook*. Library Solutions Press. (\$45.00)

Also note that PennInfo contains detailed information about these navigation tools—see the "Internet Navigation" topic in the "Computing" menu or use a keyword search to find information.





Two provosts, Mike Aiken and Tom Ehrlich, went to large midwestern universities.



Hugo Sonnenschein and Vartan Gregorian were once deans of SAS; like Mike Aiken, Dr. Gregorian went from there to provost.



Four proteges of Martin Meyerson are in their second presidencies: James O. Freedman and Bruce Johnstone, above, and Donald Langenberg and Humphrey Tonkin, below. At Penn they were, respectively, dean of law, vice president, vice provost for research, and vice provost for undergraduate studies.



In two eras, Jon Strauss and Rick Nahm were vice presidents with planning roles.



Robert Duvall was a development officer; George Kidd headed auxiliary services.

## A Growing Roster of Presidents Groomed at Penn

One of *Almanac's* most frequent back-issue requests is for "that article\* about people from Penn who have become presidents of other universities."

There was a flurry recently when the University of Chicago announced it would take *Former SAS Dean Hugo Sonnenschein* away from his provostship at Princeton, and a new round this month by the selection of *Provost Michael Aiken* as chancellor of Illinois at Urbana-Champaign, of *Senior Vice President Rick Nahm* as the next president of Knox College. While students were asking, "Why are all these people leaving?" seasoned watchers of the academic rating game were boasting of new feathers in the institutional cap and calling Penn the cradle of presidents.

So, how many people from Penn have become presidents? It depends on how they are tabulated. Shown on this page are 16 incoming or current chiefs of colleges and universities who spent formative years at Penn during the two decades just past. (The 17th, Dr. Neil Grabois, took his Ph.D. and taught math here earlier, 1957-61.) For the institutions they all lead, see page 7, past the insert.

But should it be 19? Not shown are two whose primary affiliations were elsewhere when they were on campus: *Dr. Orville Kean*, who became president of the University of the Virgin Islands two years ago, was on the UVI faculty before he came to Penn for his Ph.D. in math, and returned there after receiving the degree in 1971; and *Dr. Nannerl Overholser Keohane*, the Wellesley College president named in December to become Duke University's eighth president in July, was a visiting lecturer in political science here in Spring 1973.)

Or is it 23 (25)? Four others of the Meyerson period have left presidencies only in the past few years—*Dr. Alice Emerson* of Wheaton College (Mass.), now a Senior Fellow of the Andrew W. Mellon Foundation, *Dr. Irvin McPhail* of Lemoyne-Owen College, now provost of Pace University, *Dr. Donald Stewart* of Spelman College, president of the College Board, and *Dr. Thomas Schutte*, who headed Philadelphia College of Art (1983-89) and then the Rhode Island School of Design until he resigned last year. Also stepping down recently was Thomas Jefferson University's president, *Dr. Lewis (Bill) Bleumle*, a pre-Harnwell appointee to the medical faculty who left Penn in 1968 but took a presidency in 1977. And there was *Dr. Claude Welch*, who founded what is now the department of religious thought while he was here in 1961-71, and headed the Graduate Theological Union in Berkeley from 1972-82.

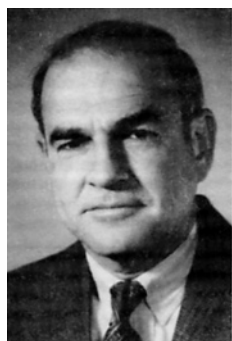
That makes it 25 (or 27?) whose presidencies started after Emeritus President Martin Meyerson's arrival in 1970, or during Sheldon Hackney's administration beginning in 1980.

For earlier years, another seven have been reported, largely from memory by senior faculty or staff: the late *Dr. Detlev Bronk* (Rockefeller University), *Dr. Henry S. Oberly* (Roanoke College), *Dr. Merle M. Odgers* (Bucknell University), *Dr. John (Jack) Howard* (Lewis and Clark), *Dr. Richard D. Stine* (Monmouth College, Illinois) and *Dr. Richard J. Stonesifer* (Monmouth College, New Jersey).

So is it 32?...34 ?

**continued past insert**

\* The first story in *Almanac* June 2, 1987 — triggered by then-Provost Thomas Ehrlich's election as president of Indiana — was followed by three more articles as readers answered our call for additions (see the July 14, 1987 issue) or as news of other presidencies broke (April 5 and September 6, 1988, issues).



Presidential timber from a range of disciplines: Baruch Blumberg (medicine), Neil Grabois (mathematics), Arthur Green (religious thought) and Claire Gaudiani (Romance languages/Lauder Institute).

## Roster of Presidents *from page 6*

More telling than the numbers is the breadth of their incumbencies — state and private, massive to minuscule, they stretch across the nation and overseas. In the order of their photographs on page 6, the Penn people now or soon to be heading insitutions of higher education are:

Dr. Michael Aiken, chancellor-elect, the University of Illinois at Urbana-Champaign.

Thomas Ehrlich, president of the University of Indiana since 1987.

Dr. Hugo Sonnenschein, president -elect of the University of Chicago.

Dr. Vartan Gregorian, president of Brown University since 1988.

Dr. James O. Freedman, president of the University of Iowa, 1982-87; now president of Dartmouth College.

Dr. D. Bruce Johnstone, president of the State University College at Buffalo, 1979-88, now chancellor of the 31-institution State University of New York.

Dr. Donald N. Langenberg, chancellor of the University of Illinois

at Chicago, 1983-1990, now chancellor of the five-campus system of the University of Maryland (and a Penn trustee).

Dr. Humphrey Tonkin, president of Potsdam College of the State University of New York, 1983-89, now president of the University of Hartford.

Dr. Baruch Blumberg, master of Bailliol College, Oxford, since 1988.

Dr. Neil Grabois, president of Colgate University since 1988.

Dr. Arthur Green, president of Reconstructionist Rabbinical College, Wyncote, Pa., since 1986.

Dr. Claire Gaudiani, president of Connecticut College since 1988.

Dr. Jon C. Strauss, president of Worcester Polytechnic Institute since 1985.

Rick Nahm, president-elect of Knox College, Illinois.

Dr. D. Walter Cohen, president of the Medical College of Pennsylvania since 1986.

Dr. Robert F. Duvall, president of Pacific University, Oregon, since 1983.

George Kidd, Jr., president of Tiffin University, Ohio, since 1981.

—K.C.G.

*From the extensive list of Trustee actions on appointments, reappointments, secondary appointments, leaves and terminations, Almanac gleans those actions reflecting movement into or within the Standing Faculty. These include new appointments and promotions, and chair designations with or without promotion, in all schools. In the health schools, where reappointment sometimes includes movement from the associated faculty (not in standing faculty) to the clinician-educator track (standing faculty, but not tenure-accruing), those actions are published. Note that clinician-educator titles are recognizable by the form of title, "Professor of \_\_\_\_\_ at (affiliated institution)." The following list shows actions from Trustees' minutes of October 30, 1992, December 11, 1992 and January 22, 1993, representing actions approved at Provost's Staff Conferences leading up to those meetings. Actions marked (\*) involve additions to the tenured ranks through appointment, promotion, or conversion.*

## Faculty Appointments and Promotions, October—January

### School of Arts & Sciences

#### Appointments

Dr. Ann L. Kuttner as Associate Professor of History of Art.

\* Dr. Jean-Michel Rabaté as Professor of English.

#### Chair Designations

Dr. Robert Kraft, Professor of Religious Studies, as the Moritz and Josephine Berg Professor for the Teaching of Religious Thought.

Dr. Russell P. Sebold, Professor of Romance Languages, as the Edwin and Leonore Williams Professor of Romance Languages.

### School of Dental Medicine

#### Appointments

Dr. H. Dexter Barber as Assistant Professor of Oral Surgery and Pharmacology.

Dr. Kymberly Higgins-Barber as Assistant Professor of Orthodontics.

Dr. Lawrence M. Levin as Assistant Professor of Oral Surgery and Pharmacology.

Dr. Mamle Mante as Assistant Professor of General Restorative Dentistry.

#### Promotion

Dr. Carolyn Gibson to Assistant Professor of Anatomy and Histology.

### School of Engineering and Applied Science

#### Chair Designation

Dr. John L. Bassani, Professor of Mechanical Engineering and Applied Mechanics, as the Richard H. and

S.L. Gabel Professor of Mechanical Engineering.

### Graduate School of Education

#### Appointment

\* Dr. Rebecca Maynard as Trustee Professor of Education.

### School of Medicine

#### Appointments

\* Dr. Philip L. Ballard as Professor of Pediatrics.

Dr. Paul F. Bates as Assistant Professor of Microbiology.

Dr. Avital Cnaan as Assistant Professor of Biostatistics in Pediatrics at CHOP.

Dr. David F. Friedman as Assistant Professor of Pediatrics.

Dr. Zvi Grunwald as Assistant Professor of Anesthesia at CHOP.

Dr. Michael S. Hanna as Assistant Professor of Medicine.

Dr. M. Patricia Harty as Assistant Professor of Radiology at CHOP.

Dr. Thomas H. Kramer as Assistant Professor of Anesthesia at HUP.

Dr. Scott A. Mackler as Assistant Professor of Medicine.

Dr. Lawrence M. Neustadter as Assistant Professor of Radiology at Veteran's Administration Medical Center.

Dr. Mary Scanlon as Assistant Professor of Radiology at the Veteran's Administration Medical Center.

Dr. Timothy E. Schultheiss as Professor of Radiation Physics in Radiation Oncology at the Fox Chase Cancer Center.

Dr. Arthur F. Simone, Jr. as Assistant Professor of Anesthesia.

Dr. Barbara H. Sohmer as Assistant Professor of Psychiatry at the Philadelphia Child Guidance Center.

\* Dr. Jayaram K. Udupa as Associate Professor of Radiologic Science.

Dr. Susan Wieggers as Assistant Professor of Medicine at HUP.

Dr. Gary Dean Wu as Assistant Professor of Medicine.

#### Chair Designations

Dr. L. Henry Edmunds, Jr., William Maul Measey Professor of Surgery, as the Julian Johnson Professor of Cardiothoracic Surgery in the Department of Surgery.

Dr. Jerome F. Strauss, III, Professor of Obstetrics and Gynecology, as the Luigi Mastroianni, Jr. Professor of Reproductive Biology in the Department of Obstetrics.

Dr. Sankey V. Williams, Professor of Medicine, as the Solomon Katz Professor of General Medicine at HUP.

#### Reappointments

Dr. Christopher M. Clark as Assistant Professor of Neurology at Graduate Hospital.

Dr. Ann-Christine Duhaime as Assistant Professor of Neurosurgery at CHOP.

Dr. David W. Low as Assistant Professor of Surgery at HUP and CHOP.

Dr. Thomas A. Mickler as Assistant Professor of Anesthesia at HUP.

Dr. Michael H. Torosian as Assistant Professor of Surgery at HUP.

Dr. Eric L. Zager as Assistant Professor of Neurosurgery at HUP.

### School of Nursing

#### Appointment

Dr. Mary Jane Ferrell as Assistant Professor of Nursing at HUP.

### School of Veterinary Medicine

#### Appointment

\* Dr. Peter J. Felsburg as Trustee Professor of Clinical Immunology in Clinical Studies.

#### Chair Designation

Dr. Wendy A. Freeman, Associate Professor of Animal Health, as Assistant Professor of Medicine in Clinical Studies (New Bolton Center) at the George D. Widener Hospital.

#### Promotion

Dr. Michael W. Ross to Associate Professor of Surgery in Clinical Studies (New Bolton Center).

### Wharton School

#### Appointments

Dr. Bruce Grundy as Assistant Professor of Finance.

Dr. Karen Jehn as Assistant Professor of Management.

Dr. Thomas W. Malnight as Assistant Professor of Management.

#### Chair Designation

Dr. Robert W. Holthausen, Professor of Accounting, as the Nomura Securities Company Professor.

#### Promotions

Dr. Peter Cappelli to Professor of Management.

Dr. Eric Johnson to Professor of Marketing.



## The Research Foundation: March 15 Deadline

### Statement of Purpose

The Research Foundation encourages the exploration of new fields across a broad spectrum of disciplines. In doing so, the Foundation expands opportunities for faculty to attract support and resources from external sources while encouraging work in fields that are traditionally underfunded.

The Foundation supports two levels of grants. The first level, Type A grants, provides support in the range of \$500 to \$5000. The second level, Type B grants, provides support in the range of \$5000 to \$50,000. The standard application for a Type A grant is briefer than that for a Type B grant, reflecting respective funding levels. However, the review criteria for Type A and Type B grants are similar, and several general factors are considered in evaluating an application for either type of grant. They are:

- Its contribution to the development of the applicant's research potential and progress.
- The quality, importance and impact of the proposed research project.
- Its potential value for enhancing the stature of the University.
- Its budget appropriateness in terms of the project proposed, including consideration of need and availability of external support.

### The Application Process

The Research Foundation Board will review both Type A and Type B applications in the fall and spring of each academic year. Applications for the fall cycle are due on or before *November 1* of each year, while spring cycle applications are due on or before *March 15* of each year. All research projects involving human subjects or animals *must* receive Institutional Board approval *prior* to funding. Questions concerning human/animal research should be directed to Ruth Clark at Ext. 8-2614. All research projects involving the use of hazardous or biohazardous materials must receive approval from the Office of Environmental Health and Safety (OEHS) prior to initiation of experimentation. Questions about this approval process should be directed to Harriet Izenberg at Ext. 8-4453.

An original and ten copies of both Type A and Type B proposals should be submitted to the Office of the Vice Provost for Research, 106 College Hall/6381.

**Type A** proposals should contain a brief description of the research and the specific needs which the grant will cover. The proposal should include:

#### I. Cover page(s)

1. Name, Title, Department, School, Campus Mailing Address, Signatures of Department Chairperson and Dean.
2. Title of proposal.
3. Does the project utilize human subjects or animals?
4. Does the project involve the use of any of the following:
  - potentially infectious agents including human blood, blood products, body fluids or tissues?
  - in vitro formation of recombinant DNA?
  - hazardous chemicals (acutely toxic chemicals, reproductive hazards, carcinogens)?
5. Amount requested.
6. 100-word abstract of need.
7. 100-word description of the significance of the project for the educated non-specialist.
8. Amount of current research support.
9. Other pending proposals for the same project.
10. List of research support received during the past three years. Include funds from University sources such as schools, department, BRSR, or Research Foundation.
11. A one-page biographical sketch of the investigator(s) listing educational background, academic positions held, and five recent publications.

#### II. A back-up of the 100-word abstract in the form of a 3- or 4-page mini-proposal.

#### III. A budget list that justifies the specific items requested and assigns a priority to each item. Budgets should not exceed a two-year maximum time period.

Categories of Research Foundation support for Type A proposals will focus on:

- Seed money for the initiation of new research.
- Limited equipment requests directly related to research needs.
- Summer Research Fellowships, with preference for applications from Assistant Professors.
- Travel expenses for research only.
- Publication preparation costs.

**Type B** proposals are limited to ten single-spaced pages in length. The following format is suggested for Type B proposals:

#### I. Cover Page(s)

1. Name, Title, Department, School, Campus Mailing Address, Signatures of Department Chairperson and Dean.
2. Title of proposal.
3. Does the project utilize human subjects or animals?
4. Does the project involve the use of any of the following:
  - potentially infectious agents including human blood, blood products, body fluids or tissues?
  - in vitro formation of recombinant DNA?
  - hazardous chemicals (acutely toxic chemicals, reproductive hazards, carcinogens)?
5. Amount requested.
6. 100-word abstract of need.
7. Amount of current research support.
8. Other pending proposals for the same project.
9. Listing of publications and research support, including titles, amounts, and grant periods, received during the past five years. Include funds from University sources such as schools, department, BRSR, or Research Foundation.
10. A brief curriculum vitae for the principal investigator.

#### II. Introduction (2 to 3 pages)

Statement of the objectives and scholarly or scientific significance of the proposed work.

#### III. Methods of Procedure (3 to 4 pages)

Description of the research plan and methodologies to be employed.

#### IV. Description of the significance and impact of the project.

#### V. Description of how a Research Foundation grant will facilitate acquisition of future research funds.

#### VI. Budget (one page) two-year maximum

Each budget item should be listed in order of priority.

Categories of Research Foundation support for Type B proposals focus on several areas of need. These are:

- Matching funds, vis-a-vis external grant sources.
- Seed money for exploratory research programs.
- Support for interdisciplinary research initiatives.
- Faculty released time.

Requests for student tuition and dissertation fees will not be considered by the Foundation.



Following are the most recent winners of the internally-funded Research Foundation awards. Guidelines for application to the next cycle appear on page 8 of this issue.

## Research Foundation Awards, Fall Cycle 1992

Wendy Ashmore Anthropology, SAS, *Start-Up Funds for Teaching and for Archaeological Field Research (Xunantunich, Belize, Central America)*.

Scott W. Atlas and John Listerud, Radiology, Medicine and Mark Stecker, Neurology, Medicine, *Dynamic MR Imaging of Brain Activation During Photoc Stimulation*.

Jonathan Baron, Psychology, SAS, *The Measurement and Expression of Values for Public Goods*.

Paul F. Bates, Microbiology, Medicine, *Development of a System for Gene Targeting in Retrovirus Receptor Expressing Transgenic Mice*.

David D. Biggs, Medicine, Medicine, *Molecular Detection of Residual Disease Following Positive Stem Cell Selection in Patients with Non-Hodgkin's Lymphoma*.

Kenneth L. Brayman, Surgery, Medicine, *Transplantation of Isolated Canine Pancreatic Islet Tissue*.

Tyrone D. Cannon and Lisa Eyler Zorrilla, Psychology, SAS, *Neuroanatomical Mediation of Cognitive Functioning in Normal Siblings*.

Kelly D. Davis, Medicine, Medicine, *Molecular Characterization of the Thyroid Stimulating Hormone Receptor in Thyroid Neoplasms*.

Robert J. DeRubeis, Department of Psychology, SAS, *The Effects of Psychosocial Stress on Cell-Mediated Immunity: Psychological and Biological Correlates*.

Paul DeWeer and Maria Yolanda Covarrubias, Physiology, Medicine, *Cloning and Functional Expression of the Sodium Pump From Squid*.

Beshara B. Doumani, History, SAS, *Property and Power in Early-Modern Palestine, 1650-1750*.

Joseph R. Ecker, Biology, SAS, *Physical Map of the Arabidopsis Genome*.

Jack Ende, Medicine, and Frederick Erickson, Education, *Restructuring Clinical Teaching: An Interdisciplinary Study of Office-Based Precepting*.

Peter J. Felsburg, Clinical Studies, Veterinary Medicine, *Model of X-Linked Severe Combined Immunodeficiency*.

Vivian L. Gadsden, Language in Education Division, Education, *Passages in Time: Intergenerational Beliefs and Messages About Literacy and Access*.

David L. Gasser, Genetics, Medicine, *Identification of Stage-Specific Transcripts During Craniofacial Development*.

Ellis E. Golub, Biochemistry, Dental Medicine, *Quantative Densitometry and Image Processing*.

Martin S. Greenberg, Oral Medicine, Dental Medicine, *Oral and Salivary CMV Infections in AIDS Patients*.

Margaret Grey, Family & Community Health Division, Nursing, *Children's Responses to the Stress of a Chronic Illness*.

Paula S. Henthorn, Medical Genetics, Veterinary Medicine, *Comparative Gene Mapping of Canine X-Linked Severe Combined Immuno-*

*deficiency (SXCID)*.

Katherine A. High, Pediatrics, Medicine, *Gene Therapy in Hemophilia B*.

Howard H. Hu, Mechanical Engineering and Applied Mechanics, SEAS, *Numerical Study of Dynamics of Interface and its Applications in Material Processing and Lubricated Pipeline Technology*.

Karen A. Jehn, Management Department, Wharton, *Conflict Management in US-Chinese Joint Ventures*.

Atsushi Kajii, Economics, SAS, *Melioration: An Economic Approach*.

Vijay Kumar, Mechanical Engineering & Applied Mechanics, SEAS, *Coordination of Arms in Biological and Robotic Systems*.

James W. Lash, Cell and Developmental Biology, Medicine, *Initiation of Segmentation in the Avian Paraxial Mesoderm*.

Ehud Lavi, Pathology & Laboratory Medicine, Medicine, *Molecular Control of Corona-virus-Induced Demyelination*.

Phoebe S. Leboy and Irene Kazhdan, Biochemistry, Dental Medicine, *Transcriptional Regulation of Osteoblast Differentiation*.

Jaumin Lien and Clifford Brass, Medicine, Medicine, *Replication of Hepatitis C Virus and Responsiveness to Interferon Therapy*.

Albert L. Lloyd, Germanic Languages & Literature, SAS, *An Etymological Dictionary of Old High German, Volume II*.

S. Bruce Malkowicz, Department of Urology, Medicine, *Combination Monoclonal Antibody Therapy for Advanced Transitional Cell Carcinoma of the Bladder*.

Alan Mann, Anthropology, SAS, *Comparative Investigations of Neanderthal Teeth*.

Roberto S. Mariano, Economics, SAS, *New Techniques For Econometric Forecasting and Policy Analysis—Practical Applications in Models For Developing Economies*.

Luz J. Martinez-Miranda & J.J. Santiago-Aviles, Electrical Engineering, SEAS, and, W.R. Graham and N.J. DiNardo, Materials Science & Engineering, SEAS, *Multichannel Analyzer for Enhancement of Thin Film Studies*.

E. Ann Matter, Religious Studies, SAS, *Study of the Manuscript Tradition of the Glossa Ordinaria*.

Naomi F. Miller and Keith DeVries, MASCA, The University Museum, *Environment and Land Use at Gordion From the Late Bronze Age to Medieval Times*.

David Neumark, Economics, SAS, *Age-Earnings Profiles and Age Discrimination*.

Lee E. Ohanian, Economics, SAS, *Analyzing Macroeconomies When Some Prices Are Rigid: Basic Theory and Empirical Implications*.

Howard Pack, City and Regional Planning, GSFA, *The Effect of Industrial Policy in Selected Asian Countries*.

Robert E. Ricklefs, Biology, SAS, *Cytokinetic Constraints on Postnatal Skeletal Growth of Precocial and Altricial Birds*.

Alain H. Rook, Dermatology, Medicine, Mo-

*lecular Analysis of Cutaneous T-Cell Lymphoma Cytokine Abnormalities: A Model of Cytokine Regulation*.

John Sabini, Psychology, SAS, *When Push Comes to Shove: Power in Romantic Relationships*.

Craig Saper, English, SAS, *A Poetics of Media Theory*.

Cynthia Scalzi, Nursing, and William P. Pier-skalla, Health Care Systems, Wharton, *A Pilot Study of Quality, Productivity and Cost Improvements in a General Acute Care Hospital*.

Gerhard A. Schad, Pathobiology, Veterinary Medicine, *The Role of Chemosensory Neurons in the Development of Parasitic Nematodes*.

Norbert F. Scherer, Chemistry, SAS, *Femtosecond Time-Resolved Scanning Tunneling Microscopy*.

Amita Sehgal, Neuroscience, Medicine, *Molecular Analysis of Circadian Rhythms in Drosophila Melanogaster*.

Martin Seligman, Psychology, SAS, *The Prevention of Depression and Conduct Problems in School Children*.

Wen K. Shieh, Systems, SEAS, *Bioconversion of Leaves to Methane as a Renewable Energy Source*.

Neil H. Shubin, Biology, SAS, *A Genetic Approach to the Origin of the Tetrapod Limb*.

Ake W. Sjöberg, Asian and Middle Eastern Studies, SAS, *The Pennsylvania Sumerian Dictionary Project*.

Richard Spielman, Genetics, Medicine, *Insulin-Dependent Diabetes and Genetic Variation in the Insulin Gene Region*.

David Stern, Asian & Middle Eastern Studies, SAS, *Translation and Publication Preparation Costs for a Hebrew Edition of My Book, Parables in Midrash: Narrative and Exegesis in Rabbinic Literature*.

Howard C. Stevenson, Psychology in Education Division, Education, *Increasing Resilience Through Empowerment Education for Low-Income, African American Parents in High Risk Environments*.

Timothy M. Swager, Chemistry, SAS, *Variable Temperature X-Ray Diffraction Facility*.

Graham H. Walker, Political Science, SAS, *Moral Architectures of Post-Communist Constitutionalism*.

Karen Winey and Russell J. Composto, Materials Science & Engineering, SEAS, William C. Forsman, Chemical Engineering, SEAS, and Alan G. MacDiarmid and Larry G. Sneddon, Chemistry, SAS, *Acquisition of a Rheometer to Study the Viscoelastic Properties of Polymers*.

Gary D. Wu, Internal Medicine, Medicine, *Transcriptional Attenuation of Intestine-Specific Gene Expression*.

Takashi Yonetani, Biochemistry & Biophysics, Medicine, *Capital Expenditure for a Replacement Lathe, Requested for the Biomedical Instrumentation Group*.

Ping Zhang, Statistics, Wharton, *A Stochastic Model for Nutritive Sucking Data*.

# Relative Investment Performance on Tax-Deferred Annuities—Periods Ending December 31, 1992

403(b) Performance Update—Total Returns

The Benefits Office regularly receives inquiries on the relative performance of investment funds offered under the University's tax deferred annuity program. At right is a table which shows the performance of the various funds for the period ending 12/31/92. The first column shows an abbreviation for the investment philosophy of the fund. (See key below). The second column shows the overall asset size of the fund in millions of dollars. Columns three through seven show the performance of the funds over various time horizons. Columns eight and nine show the best and worst year for the last five years.

The Benefits Office will periodically publish this information in *Almanac* to assist faculty and staff in monitoring the performance of their tax deferred annuity investments. Any faculty or staff member who would like additional information on these benefit programs may call the Benefits Office at Ext. 8-7281.

— Adrienne Riley, Assistant Vice President, Human Resources (Total Compensation)  
— Dennis F. Mahoney, Manager of Benefits

## TIAA-Fixed Investment Rates for

March 1, 1993, through February 28, 1994,  
will appear in an upcoming  
March issue of *Almanac*.

## Key to Abbreviations used in Philosophy Column (right)

### Domestic:

D Diversified Common Stock Fund  
DI Diversified Common Stock Fund With Somewhat Higher Income  
SC Specialty Fund With Small Company Common Stock Orientation  
B Balanced Fund  
FIS Fixed Income Fund (Short-Term Maturity)  
FI Fixed Income Fund (Intermediate-Term Maturity)  
FIL Fixed Income Fund (Long-Term Maturity)  
FISG Fixed Income Fund (Short-Term Maturity—Government Obligations)  
FIIG Fixed Income Fund (Intermediate-Term Maturity—Government Obligations)  
FILG Fixed Income Fund (Long-Term Maturity—Government Obligations)  
FIM Fixed Income Fund (Mortgage-Related Securities)  
FIJ Fixed Income Fund (Low-Rated Bonds)  
MM Money Market Fund  
AA 30:40:30 Asset Allocation 30% Stocks: 40% Bonds: 30%  
AA 60:35:5 Asset Allocation 60% Stocks: 35% Bonds: 5%  
Cash Benchmark Fund  
International:  
ICS International Common Stock Fund  
Global:  
GCS Global Common Stock Fund

Philosophy	Size \$mm	Latest Quarter	1-Year Average Annual	3-Year Average Annual	5-Year Average Annual	10-Year Average Annual	Best & Worst Year For the Last Five Years
<b>Calvert Funds:</b>							
Social Responsibility Fund							
Calvert-Ariel Appreciation Fund	D 179	11.7	13.3	NA	NA	NA	NA NA
Calvert-Ariel Growth Fund	D 255	9.9	11.7	7.6	16.8	NA	39.9 -16.1
Social Investment Bond Portfolio	FIL 53	0.1	6.7	10.2	10.4	NA	15.8 6.7
Social Investment Equity Portfolio	D 75	9.1	8.4	7.9	12.9	NA	27.5 -4.9
Social Investment Managed Growth	B 449	4.0	7.5	8.8	11.1	12.2	18.7 1.8
Social Investment Money Market	MM 163	0.7	3.3	5.5	6.5	7.2	8.8 3.3
CREF Bond Market	FIL 512	0.0	7.1	NA	NA	NA	NA NA
CREF Global Equities	GCS 225	0.4	NA	NA	NA	NA	NA NA
CREF Money Market	MM 2,635	0.8	3.7	6.1	NA	NA	NA NA
CREF Social Choice	D 371	4.5	11.1	NA	NA	NA	NA NA
CREF Stock Account	D 48,387	5.6	6.3	9.3	14.4	15.9	30.1 -5.6
<b>Vanguard Funds:</b>							
Asset Allocation Fund	AA60:35:5 585	3.0	7.5	10.8	NA	NA	NA NA
Bond Market Fund	FIL 1,060	0.2	10.3	10.3	10.3	NA	15.2 7.1
Convertible Securities Fund	DI 134	6.6	19.0	13.6	14.5	NA	34.3 -8.2
Equity Income Fund	DI 836	2.2	9.3	6.5	NA	NA	NA NA
Explorer Fund	SC 620	15.5	13.0	16.3	16.7	8.1	55.9 -10.8
<b>Fixed Income Securities:</b>							
GNMA Portfolio	FIM 6,921	0.8	6.8	11.3	11.5	11.5	16.9 6.8
High-Yield Corporate Portfolio	FIJ 2,021	0.7	14.2	11.5	9.9	11.3	29.0 -5.8
Intermediate-Term U.S. Treasury	FILG 603	-0.4	7.8	NA	NA	NA	NA NA
Investment Grade Corp. Portfolio	FIL 2,619	0.6	9.8	12.1	12.2	11.7	20.9 6.2
Long-Term U.S. Treasury Portfolio	FILG 853	1.2	7.4	10.1	11.4	NA	17.9 5.8
Short-Term Corporate Portfolio	FIS 2,696	-0.3	7.2	9.8	9.6	10.1	13.1 7.0
Short-Term Federal Portfolio	FISG 1,622	-0.5	6.2	9.2	8.9	NA	12.2 5.7
Short-Term U.S. Treasury Portfolio	FISG 483	-0.1	6.6	NA	NA	NA	NA NA
<b>Index Trust</b>							
500 Portfolio	DI 6,518	5.0	7.4	10.6	15.6	15.7	31.4 -3.3
Extended Market Portfolio	D 583	11.6	12.5	11.1	15.2	NA	41.9 -14.0
Total Stock Market Portfolio	D 274	7.1	NA	NA	NA	NA	NA NA
<b>Money Market Reserves:</b>							
Federal Portfolio	MM 1,931	0.8	3.7	5.9	6.8	7.3	9.2 3.7
Prime Portfolio	MM 12,382	0.8	3.7	6.0	7.0	7.6	9.4 3.7
U.S. Treasury Portfolio	MM 2,220	0.7	3.5	5.7	6.6	NA	8.9 3.5
Vanguard/Morgan Growth Fund	D 1,116	8.5	9.5	11.7	15.9	14.1	29.3 -1.5
PRIMECAP Fund	D 648	12.1	9.0	12.2	14.5	NA	33.1 -2.8
Quantitative Portfolios	D 408	6.8	7.0	10.8	16.0	NA	32.0 -2.5
Small Cap Stock Fund	SC 263	14.1	18.2	12.0	14.1	7.0	45.3 -18.1
STAR Fund	B 2,483	3.7	10.5	9.7	13.3	NA	24.2 -3.7
<b>Trustees' Commingled:</b>							
International Portfolio	ICS 679	-3.2	-8.8	-4.1	5.7	NA	-12.2 -8.3
U.S. Portfolio	DI 68	8.3	6.5	7.3	12.5	12.3	26.6 -3.9
Wellesley Income Fund	B 3,172	1.2	8.7	11.1	13.5	14.5	21.6 3.9
Wellington Fund	B 5,559	2.6	7.9	9.1	12.9	14.6	23.6 -2.8
Windsor Fund	DI 8,842	8.7	16.5	8.2	13.4	16.3	28.7 -15.5
Windsor II	DI 5,407	3.4	12.0	9.1	15.6	NA	28.7 -10.0
<b>World:</b>							
International Growth Portfolio	ICS 880	-3.1	-5.7	-4.6	3.9	16.8	24.8 -12.1
U.S. Growth Portfolio	DI 1,814	4.6	2.8	16.4	18.8	15.1	46.7 2.8
<b>Indexes To Compare Performance Against</b>							
S&P 500							
Lipper Capital Appreciation Funds Average		5.0	7.6	10.8	15.9	16.1	31.7 -3.1
Lipper Growth Funds Average		10.3	8.5	11.1	13.7	12.0	37.6 -8.0
Lipper Growth & Income Funds Average		9.1	7.8	11.4	14.5	12.7	35.7 -5.5
Salomon Bros Long-Term High-Grade Bond Index		5.9	8.3	10.0	13.4	13.4	28.8 -4.5
Lehman Brothers Government/Corp. Bond Index		1.4	9.4	11.9	12.5	13.3	19.9 6.8
Morgan Stanley Capital Investment-EAFE Index		0.1	7.6	10.6	10.7	11.5	16.1 7.6
91-Day Treasury Bills		-3.9	-12.2	-9.0	1.3	16.7	28.2 -23.5
		0.8	3.6	5.7	6.4	7.9	9.3 3.9



## Health and Safety Seminars

The Office of Environmental Health & Safety (OEHS) will offer Bloodborne Pathogens Training for all affected workers on February 25.

Also, on February 26 there will be Chemical Hygiene Training for all new and previously untrained laboratory workers.

These trainings will review OSHA's regulation *Occupational Exposure to Bloodborne Pathogens* as well as Penn's biosafety program. Information about free hepatitis B Vaccination for all at risk employees will also be provided at the Bloodborne Pathogen Training session.

## More on Safer Sex Awareness

Additional dates have been announced for Safer Sex Awareness Month, and changes of location made for some of those announced earlier. (See the February 9 *Almanac* for initial listings and this week's the March at Penn calendar for an event/March 18.) Revisions to the February schedule:

**23 Eroticizing Safer Sex Workshop for Men;** Ernie Green, Human Sexuality; 8 p.m.; Roof Top Lounge, High Rise East.

**Eroticizing Safer Sex Workshop for Women;** Gloria Gay, Penn Women's Center Associate Director; 7 p.m.; TV Lounge, Van Pelt College House.

**24 Eroticizing Safer Sex Workshop for Women;** Susan Vassbinder, Training and Education Specialist; 8 p.m.; Roof Top Lounge, High Rise South.

**25 Women Living with AIDS Panel;** Anna Forbes, AIDS educator/activist; 5 p.m.; Room 217, Williams Hall.

## Volunteers for Bipolar Study

Healthy volunteers, ages 30-36, free of current or past mental health, medical, drug and alcohol problems, are needed for a bipolar disorder study examining the effects of lithium on the thyroid gland. Subjects will receive a free physical examination, laboratory studies as well as \$250. For information, contact Lisa at 349-5896.

## Volunteers for Psoriasis Study

Researchers at the University of Pennsylvania Medical Center are seeking volunteers with severe psoriasis to participate in a 12-week drug treatment study.

The new drugs are derivatives of cyclosporin, an immuno-suppressive drug most commonly used to treat transplantation rejection. Although also very effective in treating psoriasis, cyclosporin is a drug with many side effects, including high blood pressure and kidney problems. Investigators believe the derivatives could prove less toxic than cyclosporin.

Volunteers can be screened over the phone. Once accepted into the study, they will not be charged for office visits, lab tests, or medication. Those who successfully complete the 12-week study will receive \$600.

The investigation is being conducted by the Drug Studies Unit in the Medical Center's Department of Dermatology. For further information call 662-6722.



**Powaqqatsi/Live:** The score from Powaqqatsi, Godfrey Reggio's second film-music collaboration with Philip Glass and The Philip Glass Ensemble, will be performed live for the first time with the screening of the film on Sunday, February 28 as part of the New Music at Annenberg Series. Powaqqatsi/Live is a mixed-media concert blending powerful cinematography and a musical score which integrates African, Latin, Indian, and Middle Eastern rhythms. For tickets and information, call the Annenberg Center box office at Ext. 8-6791.

## The University of Pennsylvania Police Department Community Crime Report

This summary is prepared by the Division of Public Safety and includes all criminal incidents reported and made known to the University Police department between the dates of February 15, 1993 and February 21, 1993. The University Police actively patrol from Market Street to Baltimore Avenue, and from the Schuylkill River to 43rd Street in conjunction with the Philadelphia Police. In this effort to provide you with a thorough and accurate report on public safety concerns, we hope that your increased awareness will lessen the opportunity for crime. For any concerns or suggestions regarding this report, please call the Division of Public Safety at Ext. 8-4482.

### Crimes Against Persons

#### 34th to 38th/Market to Civic Center: Threats & harassment—3

02/15/93	9:47 PM	3400 Block Walnut	Passenger harassed by driver
02/18/93	1:24 AM	Grad B Tower	Complainant received unwanted calls
02/18/93	10:34 AM	Lot # 17	Threatening note on windshield

#### 38th to 41st/Market to Baltimore: Robberies (& attempts)—3, Simple assaults—1

02/15/93	12:14 AM	200 Block Fels Walk	2 males robbed complainant/no injuries
02/15/93	8:48 PM	4000 Block Spruce	Two males fighting/advised of private criminal complaint
02/18/93	12:03 AM	3900 Block Walnut	Male attempted to rob complainant
02/18/93	6:27 PM	40th & Market	Male attempted to rob complainant with gun

#### 41st to 43rd/Market to Baltimore: Robberies (& attempts)—2

02/16/93	12:38 PM	42nd & Locust	Suspect attempted to rob complainant
02/17/93	6:22 PM	42nd & Osage	UPS driver robbed of cash by gun

#### 30th to 34th/Market to University: Threats & harassment—1

02/15/93	11:06 AM	Chemistry Building	Complainant received harassing letter
----------	----------	--------------------	---------------------------------------

### Crimes Against Property

#### 34th to 38th/Market to Civic Center: Total thefts (& attempts)—10, Thefts from Autos—1, Forgery & fraud—1, Criminal Mischief & Vandalism—3

02/15/93	5:39 AM	McNeil Building	Glass smashed on snack machine
02/15/93	3:46 PM	Williams Hall	Unattended wallet taken from basement
02/16/93	2:31 PM	Nursing Ed Building	Purse taken from women's room/later found
02/16/93	10:11 AM	Johnson Pavilion	Master keys taken from briefcase

continued next page



continued from previous page

02/16/93	3:28 PM	Franklin Building	Unauthorized use of credit cards
02/16/93	6:52 PM	Furness Building	Credit cards removed from wallet in library
02/17/93	11:19 AM	Annenberg Center	Bench thrown in theatre/seats damaged
02/17/93	3:44 PM	Steinberg/Dietrich	Television found damaged
02/17/93	5:28 PM	Phi Gamma Delta	Unattended coat and gloves taken
02/19/93	6:29 PM	Stouffer Dining	Jacket taken from chair while dining
02/20/93	11:03 AM	Lot # 43	Bridge toll sticker and parking sticker taken from vehicle
02/21/93	2:37 PM	Delta Phi	Coat and camera taken
02/21/93	3:43 PM	Delta Psi	Wallet taken from coat during party
02/21/93	7:40 PM	Houston Hall	Wallet taken from unattended coat

**38th to 41st/Market to Baltimore:** Burglaries (& attempts)—4, Total thefts

(& attempts)—8, Thefts from autos—3, Thefts of bicycles & parts—2			
02/16/93	12:19 AM	3916 Pine St.	1st floor window bars forced/property taken
02/16/93	1:08 PM	Tau Epsilon Phi	8 bottles of soda taken from residence
02/17/93	8:04 AM	3900 Block Delancey	Driver side window broken/ashtray taken
02/17/93	10:21 AM	100 Block 39th	Vehicle window broken/property taken
02/18/93	1:34 PM	Van Pelt House	Credit card receipts taken/attempt purchase
02/18/93	7:56 PM	Delta Delta Delta	Secured bike taken from rack
02/20/93	12:09 AM	High Rise North	Computer taken from unsecured room
02/20/93	12:23 AM	4004 Pine St.	Secured bike taken from railing
02/20/93	2:01 AM	3939 Pine St.	Various items taken from residence
02/20/93	2:14 PM	3900 Block Pine	Radio taken from vehicle/later found
02/20/93	8:30 PM	3920 Pine St.	Coat taken from closet
02/20/93	11:17 PM	3925 Walnut St.	Wallet taken from coat pocket

**41st to 43rd/Market to Baltimore:** Burglaries (& attempts)—1, Total thefts

(& attempts)—1			
02/18/93	6:24 PM	4112 Spruce St.	Front door forced to residence/property taken
02/20/93	11:58 AM	400 Block 42nd	Male trying to take tire from auto/fled

**30th to 34th/Market to University:** Burglaries (& attempts)—1, Total thefts

(& attempts)—8			
02/16/93	2:06 PM	University Museum	Food taken from area
02/16/93	4:33 PM	Hutchinson Gym	Two knapsacks taken
02/17/93	1:34 PM	Smith Hall	Unattended wallet taken from desk
02/17/93	4:11 PM	Hutchinson Gym	Unattended gym bag taken from room
02/17/93	5:49 PM	Bennett Hall	Jacket taken from 4th floor
02/17/93	7:08 PM	Hutchinson Gym	Cash taken from unattended ID holder
02/18/93	4:31 PM	Hutchinson Gym	Unattended backpack taken
02/19/93	9:52 PM	Palestra	Items taken from duffel bags/returned to complainant
02/21/93	7:38 PM	Hill House	Items taken from open room

**Outside 30th to 43rd/Market to Baltimore:** Burglaries (& attempts)—1

02/16/93	10:40 AM	4422 Osage St.	Residence entered/items taken
----------	----------	----------------	-------------------------------

**Crimes Against Society**

**34th to 38th/Market to Civic Center:** Disorderly conduct—1

02/1/93	11:04 PM	3600 Block Locust	Student pulled down banners
---------	----------	-------------------	-----------------------------

**38th to 41st/Market to Baltimore:** Disorderly conduct—2

02/15/93	12:05 AM	3900 Block Walnut	Two males caused disturbance/citations issued
02/20/93	4:32 PM	3900 Block Locust	Male caused disturbance/also wanted on warrant

**18th District Crimes Against Persons**

2/08/93 to 2/14/93

Schuylkill River to 49th Street, Market Street to Woodland Avenue

**Totals: 11 incidents, 4 arrests**

2/08/93	9:45 PM	3600 Sansom	Robbery	No
2/09/93	2:20 PM	4006 Spruce	Robbery	Yes
2/09/93	6:15 PM	3400 Walnut	Aggravated Assault	Yes
2/09/93	7:41 PM	419 S. 48th	Aggravated Assault	No
2/12/93	12:00 AM	4738 Baltimore	Robbery	No
2/12/93	12:06 AM	4800 Warrington	Robbery	No
2/12/93	5:54 PM	3900 Ludlow	Robbery	No
2/12/93	10:14 PM	4408 Sansom	Aggravated Assault	No
2/14/93	1:50 AM	4000 Woodland	Robbery	No
2/14/93	6:38 AM	4520 Walnut	Aggravated Assault	Yes
2/14/93	6:41 PM	4700 Spruce	Homicide	Yes

**Spring Break: No Almanac**

To save printing and distribution funds needed later in the spring term, *Almanac* expects to skip the March 9 issue unless urgent information must be published at that time. Staff will be on duty to assist contributors planning to publish in the weeks ahead.

Since there will be no March 9 Update, sponsors of events to be held March 10 through 17 should send copy by *February 25*, by messenger or by fax, to have it considered for the March 2 issue.

Please call Ext. 8-5274, or e-mail [almanac@A1.QUAKER](mailto:almanac@A1.QUAKER) if there are any problems or questions. —Ed.

## Update

FEBRUARY AT PENN

### TALKS

**23** *Molecular Anatomy of Dynein*; Stephen M. King, Worcester Foundation for Experimental Biology; 4 p.m.; Physiology Library, 4th floor Richards Building (Physiology).

**24** *RNA Catalysis: Reactions of Phosphate and Carboxylate*; Joseph Piccirilli, chemistry and biochemistry, University of Colorado; noon; Pharmacology Seminar Room, John Morgan Building (Pharmacology).

**25** *Alcoholism: Early Detection and Management*; Scott Mackler, medicine; noon; Surgical Conference Room, White Building, HUP (Surgery).

*Shinran and His Wife, Eshin the Nun: Differences in Their Beliefs and Daily Lives*; Masaharu Imai, Ibaragi University, Japan; 4:30 p.m.; Room 305, Houston Hall (Asian and Middle Eastern Studies).

*White Women's Christ and Black Women's Jesus: Feminist Christology and Womanist Response*; Jacqueline Grant, Interdenominational Theological Center; 5:30 p.m.; Christian Association Building (Christian Association).

**26** *Medical Management of Urolithiasis*; Alan Wasserstein, medicine; noon; Agnew-Grice Auditorium, 2nd Floor Dulles, HUP (Medicine).

*Calcium Channel Ionic and Gating Currents: New Insights Using Toxins From Funnel Web Spider Venom*; Eric Ertel, Merck Research Laboratories; noon; Physiology Library, 4th floor Richards Building (Physiology).



*Almanac*

3601 Locust Walk Philadelphia, PA 19104-6224  
(215) 898-5274 or 5275 FAX 898-9137  
E-Mail [ALMANAC@A1.QUAKER](mailto:ALMANAC@A1.QUAKER)

The University of Pennsylvania's journal of record, opinion and news is published Tuesdays during the academic year, and as needed during summer and holiday breaks. Guidelines for readers and contributors are available on request.

EDITOR Karen C. Gaines  
ASSOCIATE EDITOR Marguerite F. Miller  
EDITORIAL ASSISTANT Leda C. Sawchak  
EDITORIAL INTERN Heather Mumby  
STUDENT AIDES Shari Bart, Shiron Bell,  
Melanie Chang, Bill King, Stephen Sanford

ALMANAC ADVISORY BOARD: *For the Faculty Senate*, June Axinn (Chair), David K. Hildebrand, Phoebe S. Leboy, Gerald J. Porter, Lorraine R. Tulman, Roger Walmsley; *for the Administration*, Stephen Steinberg; *for the Staff Assemblies*, Laurie Cousart (A-1), Lynn Ruthrauff (Librarians); Shirley Purcell (A-3).