

# Almanac

Tuesday, May 17, 1988

Published by the University of Pennsylvania

Volume 34, Number 34

photos by Denise Angelini



Dr. Janis Davidson



Linda Knox

## School of Nursing Awards

Dr. Janis Davidson, assistant professor of nursing, is the recipient of the 1988 School of Nursing Teaching Award. Dr. Davidson is course director for one of the clinical courses, N250 Nursing Care of the Ill Adult. Her area of research interest is nursing intervention strategies in HIV control.

Linda Knox, a teaching assistant and Ph.D. candidate, is the winner of the School of Nursing 1988 Teaching Assistant's Award. She is a TA in N250, Nursing Care of the Ill Adult, and N300, Nursing Care of the Chronically Ill. Ms. Knox holds a BSN and MSN from the School of Nursing.

Winners were selected by the School's awards committee from nominations submitted by students and alumnae. This is the sixth year for the Teaching Award and the third for the Teaching Assistant Award. Recipients' names are inscribed on a plaque in the School, and each winner received a plaque at the Nursing School Graduation ceremony May 15.

## Toward \$100 Million: One Class's \$3.7 Million Boost

Penn fundraising is out to set a new record by reaching \$100 million by June 30—and the 25-year Reunion Class of 1963 has already set an all-time high for class gifts that includes an endowed chair in English and two term chairs for women in SAS.

Gifts and pledges totalling \$3,711,963 were reported by Class of 1963 Reunion Chairman Joseph B. Glossberg at Alumni Day festivities Saturday—the largest single class gift in the history of the University and the fourth successive record-setting 25th reunion gift.

The Class of 1960 was the first to break the million-dollar barrier, raising \$1.2 million. The Class of 1962 raised \$1.3 million. The Class of 1962 shot up to \$3 million, breaking not only Penn's record but Harvard's—and 1963 may do the same. Final figures will not be available until after June 30. But in cash, not counting pledges, the annual giving total this year had exceeded \$10 million by May 14, with almost \$5 million of the total coming from undergraduate alumni.

**SAS Chairs:** While most of the Class of 1963's gifts were unrestricted, donors of \$25,000 or more were allowed to designate their gifts for specific University projects. The choices included an anonymous \$1.25 million to endow a professorship in English, and a \$100,000 for two term chairs for women faculty members in SAS. Other gifts were designated for the proposed Penn Club in New York City, a new

admissions walkway, athletics, and fraternity renovations.

At the Class reunion dinner Friday, President Sheldon Hackney called 1963's gift "truly remarkable, even in the context of recent history."

As of May 14, the quinquennial reunions had recorded gifts and pledges of:

1983	\$ 26,312 from 302 donors
1978	40,387 from 428 donors
1973	63,771 from 416 donors
1968	180,051 from 466 donors
1963	3,711,963 from 600 donors
1958	417,222 from 349 donors
1953	126,247 from 349 donors
1948	72,480 from 378 donors
1943	202,200 from 399 donors
1938	250,278 from 281 donors
1933	41,200 from 139 donors
1928	31,279 from 121 donors

(continued on page 2)

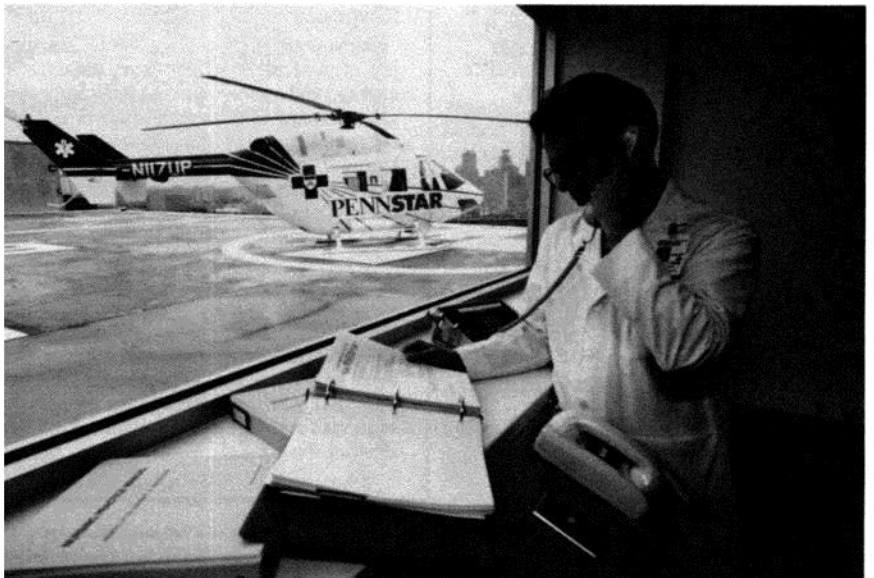
## INSIDE

- Speaking Out: More on Salary Reports, p. 2
- Council: Summary of April 27 Meeting, p. 2
- Fall Convocation, p. 2
- Facilities Development Fund Awards, pp. 2-3
- Grants on Aging; Deaths, p. 3
- CrimeStats, Update, p. 4

**Pullout: The Campus Master Plan**

## HUP, HUP and Away

Trauma victims, heart-attack and transplant patients and others needing emergency treatment in a 70- to 90-mile radius of the Hospital of Pennsylvania will soon be able to arrive within minutes via PENNSTAR (PENN Specialized Tertiary Aero-medical Response) flight services landing on a rooftop heliport in the Penn Medical Center. The BK-117 helicopter, unveiled yesterday, cruises at up to 150 m.p.h. with a range to Harrisburg to the West, Washington D.C. to the South, New York City to the North and Cape May to the East. HUP treats 50 to 60 trauma patients a month who come from a radius of 50 miles, usually by ground transport and often taking a small community's only ambulance out of service for the trip. Trauma physicians say a patient's chances can improve as much as 30 percent if he or she can undergo proper surgery within an hour or so at a specially equipped and staffed trauma center such as HUP's, which has round-the-clock magnetic imaging and hyperbaric chamber among other high-tech facilities. Dr. C. William Schwab is the medical director overseeing the trauma unit.



## Record Giving

*continued from page 1*

Alumni participation as a whole is also breaking records: with two months to go, some 50,000 have made gifts or pledges.

Projections of a \$100 million year by June 30 are based on Year-to-Date (YTD) figures which by April 30 were running 20% ahead of last year's. Subscriptions and pledges of nearly \$94.5 million have already exceeded last year's total of \$92 million. (Subscriptions are new gifts in hand, as distinguished from cash receipts that pay off previous pledges.)

Cash receipts are also flowing faster, up 27% over last year's.

Penn tracks giving from five sources—alumni, friends, corporations, foundations and associations. In the April 30 YTD comparison made by Vice President Rick Nahm, subscriptions and pledges were ahead in four of the five categories: alumni up 43%, friends 1%, foundations 84% and associations 41%. Corporate giving was running behind by 26%, but this is a slight upturn from the 31% lag found in the December 31, 1987 report.

## COUNCIL

### Synopsis of Minutes: April 27

President Hackney, in opening the meeting, noted that it marked the 25th anniversary of the establishment of the Council, the first meeting having been held on May 8, 1963. Wayne Glasker, making his final report as chair of the Graduate and Professional Student Assembly after two years of service, drew attention to GAPSA resolutions asking that "top priority" be assigned to construction of a campus center and that a task force be established "to re-examine the place of residential fraternities on campus." A Council discussion of the campus center is expected in the fall, when prospects for its place in the coming development campaign should be clearer, and the Steering Committee will take up the resolution on fraternities. Vincent Phaahla, chair-elect of GAPSA, again expressed dissatisfaction with the Black South African Managers' Program which has been conducted in the Wharton School, saying that it was initiated without consultation with black international students from South Africa and that it has trained personnel for corporations that are staying in South Africa. Elections to the 1988-89 Steering Committee were held.

—Robert G. Lorndale, Secretary

## Research Facilities: \$1.84 Milli

Provost Michael Aiken and Vice Provost for Research Barry Cooperman have announced the 1988 round of awards from Penn's in-house Research Facilities Development Fund, which supports the improvement, renovation and construction of research facilities and the acquisition of major items of equipment.

For 1988, a total of \$1,841,000 has been provided for ten projects in six Schools and one interdisciplinary center.

### Arts & Sciences

One award is to an all-School facility, and three others support specific departmental research:

- A \$150,000 award to SAS Computing funds the upgrading of the David Rittenhouse Computing Facility that faculty throughout the Arts and Sciences use for research. The IBM 3090-180 installed last June has been upgraded to 3090-200 with the addition of a second processor. An open house is scheduled May 25, from 2 to 5 p.m., at the facility's new location, 3401 Walnut Street (see page 4).

- Biology's Mudd Plant Sciences Institute received \$121,000 to build a Controlled Environment Room where Dr. Anthony Cashmore and other plant geneticists will look at the way light regulates gene expression. After growing plants in the dark under controlled conditions they will expose them to light in stages, tracking the induction of DNA to find out which genes are "turned on" at specific levels.

- Physics will use its \$150,000 grant to add a high speed analog facility that is important to high energy physics, condensed matter physics and the study and modeling of neural networks. The new equipment will be used in joint research that involves Dr. Hugh Williams of Physics and Dr. Jan Van der Spiegel of Electrical Engineering.

- Chemistry is adding a \$225,000 X-ray crystallography unit to a lab being set up for a not-yet-announced new faculty member who studies the molecular structure of complex life molecules.

### Dental Medicine

As the \$110,000 first phase of upgrading electron

### Freshman Convocation: A Sunday Date in September

Freshman Convocation will be a Sunday evening event this fall, taking place at 7 p.m. on September 4. The Convocation, which is effectively the students' introduction to the academic side of Penn, will come after nuts-and-bolts orientations (separate ones for commuters, transfer students, parents, and residential students) and leads into three days of educational programming—the Discovery and Meaning Lecture on Monday, and the Educational Program Series of faculty seminars Tuesday and Wednesday. Interspersed with these will be safety awareness seminars and behavioral standards discussions.

## Speaking Out

### Request Salaries by School

In our letter in the May 10 *Almanac*, we identified what we believe is a serious problem caused by the University's past unwillingness to make information available to the faculty concerning average salaries by individual School. We understand the Provost's limited reply to our letter to indicate the University's willingness to supply this information when requested by the national AAUP. In the meantime, however, we suggest that the University should act to improve the situation rather than waiting for outside help. We therefore express a request that the University make available, to the local AAUP chapter and to the faculty generally, average salary figures by School, since the University is willing to provide this information to the national AAUP if asked.

—Elsa Ramsden (physical therapy)  
President, University of Pennsylvania  
Chapter, AAUP

—Peter Freyd (mathematics and computer science)  
Vice President, University of

Pennsylvania Chapter, AAUP

—Gerald Neuman (law) secretary-treasurer,  
University of Pennsylvania Chapter, AAUP

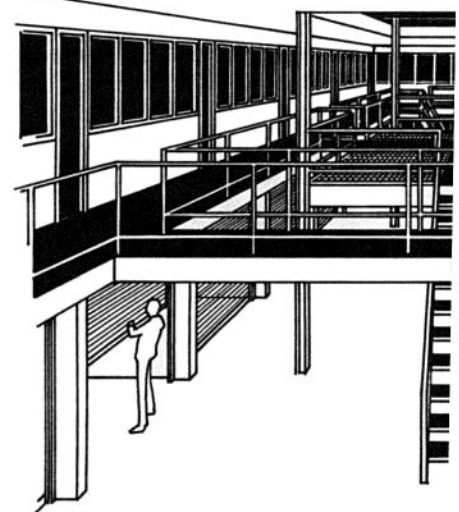
### Response

As you are probably not aware, the subject of publicizing school salary data—average and otherwise—has been for many years a frequent subject of discussion between the Administration and the Senate Committee on the Economic Status of the Faculty. The Administration's position has been a consistent one since 1972 and one that I intend to maintain.

Do not read my response in *Almanac* May 10, 1988 as implying that the Administration would automatically provide school data to the AAUP if asked. What you may be sure of is that in the future we will continue to provide that organization with the data that it has requested in the past. Any requests for different data would be considered on the merits.

—Michael Aiken, Provost

SPEAKING OUT welcomes the contributions of readers. *Almanac's* normal Tuesday deadline for unsolicited material is extended to THURSDAY noon for short, timely letters on University issues. Advance notice of intent to submit is always appreciated.—Ed.



A single-story lab when it housed older, bulk house more compact equipment and have a



## In In-House Awards

microscopy equipment, Dr. Irving Shapiro and others in the Research Center for Oral Biology will install a scanning electron microscope with accessory instrumentation which will enable them to look at surfaces at the ultramicroscopic level. They are refining the optical analysis of bone, cartilage and dental plaque in studies that contribute also to other branches of medicine.

### Engineering & Applied Science

A \$225,000 award goes toward a \$900,000 project to renovate the old "unit ops" lab at 116 Towne Building as a state-of-the-art chemical engineering lab for undergraduate and graduate students.

### Laboratory for Research on the Structure of Matter

LRSM's grant of \$130,000 goes toward renovation in the next-door Edison Building. In space that formerly housed the Energy Center, the Department of Materials Science will have its electron microscopy suite.

### Medicine

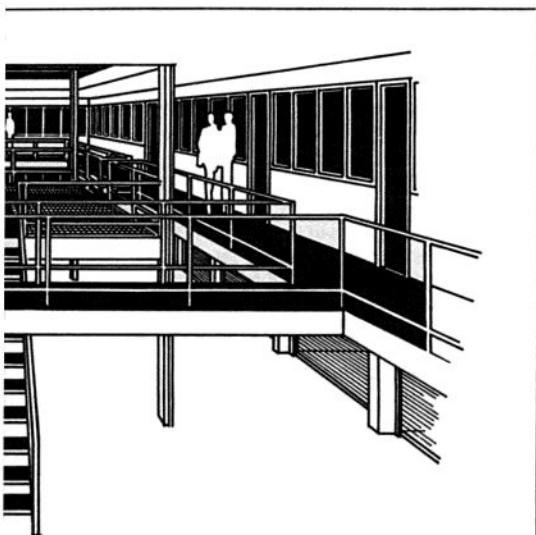
A \$300,000 grant covers renovations in the Anatomy Department, providing space for work led by Dr. John Raper, who is also affiliated with the Mahoney Institute of Neurological Sciences. His research, on determining environmental cues that guide the path taken by the growth cones of extending axons in developing neurons, adds to the department's studies of the visual system that bring together colleagues in neurobiology, cell and molecular biology, and developmental biology.

### Nursing

As part of an increased research thrust, the School of Nursing will use its \$130,000 for renovations that will add research space in the Nursing Education Building.

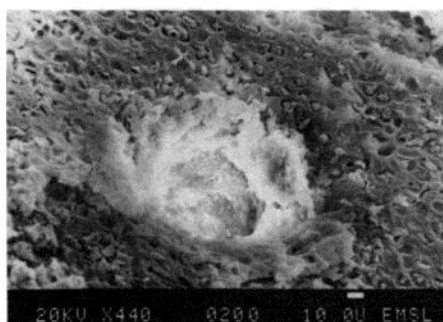
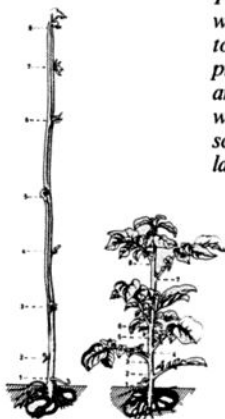
### Veterinary Medicine

A \$300,000 grant goes toward \$1.1 million renovation of Laboratory Animal Facilities at New Bolton Center as well as the West Philadelphia campus.

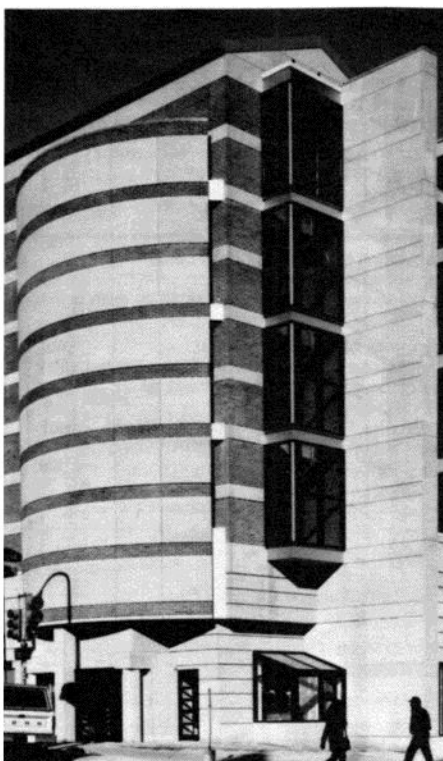


taller) equipment, Engineering's 116 Towne will increase workspace for chemical engineering.

*Drawing from a controlled-environment test on the potato plant. Penn's plant geneticists will study tomato, tobacco and other food-product seedlings—plus arabidopsis, a small weed with a genome that scientists find particularly informative.*



*A sample of the scanner output from Dental Medicine's new electron microscopy equipment.*



Lewis Tanner ©

*SAS Computing is now on the third floor of the new 3401 Walnut Street complex of offices and shops. For the dedication May 25, SAS announces an open house (see page 4).*

## Funding for Research in Aging

The Center for the Study of Aging has an annual program to fund pilot projects in all areas of gerontology. The grants will provide seed money for start-up projects that have the greatest potential to lead to full research programs in aging.

July 1, 1988 is the deadline for receipt of applications, with funding available about September 1, 1988.

Faculty members of the University of Pennsylvania are eligible to apply for these one-year grants, which are made possible by funds from a National Institute on Aging Geriatric Leadership Academic Award. The purpose of the Academic Award is to expand gerontology research programs at the University of Pennsylvania. This is the third round of funding offered by the Center under the Academic Award program.

Pilot project proposals will undergo peer-review by a committee chosen by the Center for the Study of Aging. Final technical reports are required at the end of the project period for submission to the NIA. Applications should be prepared on the standard PHS Form 398 for a maximum of \$5,000, along with a signed human subjects form (HHS 596), if applicable.

Direct questions and completed applications (original plus six copies) to: Robin Charpentier, Assistant to the Director, Center for the Study of Aging, University of Pennsylvania, 3906 Spruce/6006, Ext. 8-3172.

## DEATHS

**Dr. Joseph Barone**, a former professor of music at Penn, and founder and director of the Bryn Mawr Conservatory, died April 28 at the age of 77.

Dr. Barone founded the Bryn Mawr Conservatory of Music in 1934 and was director there for more than 53 years. He joined the staff of the music department here in 1951, and was assistant professor of music from 1957 to 1960. He also served on the Annenberg Center Board of Advisors.

He is survived by his wife, Kathryn; sons, Joseph A. and Marcantonio; three grandsons, three brothers and three sisters.

**R. Schuyler Lippincott**, a former associate trustee of the University, died May 14 at the age of 71. A retired partner in the investment firm of Drexel & Co., Mr. Lippincott was the son of Joseph Wharton Lippincott and his great-grandfather, Joseph Wharton, founded Bethlehem Steel Co. and the school that bears his name. Mr. Lippincott graduated from Penn in 1939 and served as president of his class.

Surviving are his wife, Elizabeth Hanger Lippincott; a son, Roger L. Jones; three daughters, Hadley J. Ferguson, Edith B. Jones and Elizabeth S. Lippincott; a brother; a sister, and four grandchildren. Contributions may be made to the Lippincott Library of the Wharton School.

### Back Issues Needed?

Those who keep complete backfiles of *Almanac* and are missing any issue(s) in Volume 34, or who would like extra copies of a given number in that volume, are asked to place their requests by June 1 when the staff recycle the overage to make space for next year's storage. Call Mary Corbett, Marguerite Miller or Karen Gaines at Ext. 8-5274.



Starring in Garson Kanin's romantic comedy *Born Yesterday* now at the Zellerbach Theatre, Annenberg Center, are Julie Hagerty, star of *Airplane*, and David Schramm. Hagerty plays the dumb ex-chorus girl, mistress of a shady businessman, played by David Schramm, who's in *Washington, D.C.* trying to buy a U.S. Senator. The play runs through May 22. Ticket information: Ext. 8-6791.

### Department of Public Safety Crime Report

This report contains tallies of Part I crimes, a listing of Part I crimes against persons, and summaries of Part I crimes in the five busiest sectors on campus where two or more incidents were reported between **May 9 and May 15, 1988**.

**Total Crime:** Crimes Against Persons—0, Burglaries—9, Thefts—24, Thefts of Auto—0, Attempted Thefts of Auto—0

Date	Time Reported	Location	Incident
<b>39th St. to 40th St., Spruce St. to Locust Walk</b>			
05-09-88	3:00 AM	Harrison House	Items taken from room/forced entry.
05-11-88	7:00 AM	Harrison House	Wire cut/items taken from commissary.
05-12-88	4:43 PM	3900 Blk Locust	Wallet taken from purse on bench.
05-13-88	12:18 PM	Harrison House	Various items taken from secured locker.
05-14-88	3:34 PM	1925 House	Unattended radio taken from bldg. lobby.
05-14-88	3:53 PM	Harrison House	Property taken from secured locker.
05-14-88	8:17 PM	3900 Blk. Locust	Suitcase taken from under table near tent.
<b>36th St. to 37th St., Locust Walk to Walnut St.</b>			
05-11-88	12:44 AM	Annenberg Center	Room broken into/cash taken.
05-11-88	11:43 AM	Annenberg Center	Petty cash taken from desk drawer.
05-12-88	4:11 PM	Christian Assoc	Wallet taken while sitting at table.
05-13-88	3:00 PM	Faculty Club	Money taken from wallets (2) complainants.
<b>36th St. to 37th St., Spruce St. to Locust Walk</b>			
05-09-88	11:12 AM	Steinberg/Dietrich	Carry-all bag taken over weekend.
05-10-88	11:03 AM	Steinberg/Dietrich	Radio taken from locked office.
5-13-88	4:14 AM	Psi Upsilon	Oriental rug taken from house.
<b>37th St. to 38th St., Spruce St. to Locust Walk</b>			
05-09-88	1:05 PM	Vance Hall	Two radios taken from locked office.
05-09-88	5:43 PM	Vance Hall	Pen set taken from locked room.
05-11-88	3:34 PM	Vance Hall	Backpack with research papers taken from desktop.
<b>38th St. to 40th St., Baltimore Ave. to Spruce St.</b>			
05-10-88	8:53 AM	Veterinary School	Pry marks on door/no entry gained.
05-10-88	10:54 AM	Veterinary School	Checks and cash taken from drawer/forced entry.
05-12-88	3:00 PM	Veterinary Hospital	Pry marks found on door/nothing taken.

**Safety Tip:** Have you noticed dangerous conditions that can affect your safety or that of someone else? Report all dangerous conditions, all crime to Campus Police as soon as possible. Community police means communicating. Call Campus Police at any of the following extensions: Ext. 8-7297, in an emergency dial 8-7333 or use any yellow emergency telephone.

### 18th Police District

Schuylkill River to 49th St., Market St. to Schuylkill/Woodland Ave.  
Reported crimes against persons from 12:01 a.m. 5-2-88 to 11:59 p.m. 5-8-88

**Total:** Crimes Against Persons—7, Robbery/gun—1, Aggravated Assault/knife—1, Robbery/strongarm—2, Robbery/unknown—1, Purse snatch—2, Arrests—2

Date	Location/Time Reported	Offense/weapon	Arrest
5-3-88	4800 Walton Ave., 6:25 PM	Purse Snatch	Yes
5-4-88	110 S. 40th St., 2:30 AM	Robbery/unknown	Yes
5-4-88	3000 Market St., 9:00 AM	Robbery/strongarm	No
5-4-88	4040 Market St., 5:03 PM	Robbery/strongarm	No
5-7-88	34th and Market St., 12:25 AM	Aggravated assault/knife	No
5-7-88	4500 Spruce St., 8:30 PM	Purse snatch	No
5-8-88	4201 Walnut St., 4:30 AM	Robbery/gun	No

## Update

MAY AT PENN

### CONFERENCES

**18 MS Research and a Workshop on Adjustment to Institutional Living** sixth annual symposium; 9:30 a.m.-1:30 p.m., Auditorium, Wistar Institute. Admission free (Wistar Institute; Department of Neurology).

### FITNESS/LEARNING

**23 DEC Rainbow User Group Meeting;** noon, Room 305, Houston Hall. Information: Chad Graham, Ext. 8-8509 (Computing Resource Center).

### CRC Noontime Training

Seminars are held at the CRC, Locust Walk at 38th St., enter opposite the Bookstore. Registration is not required. Information: Ext. 8-9085.

**19 File Management (IBM).**

**25 General Communications Using ProComm (IBM).**

### CRC Courses

Registration required for all courses. Individuals must register themselves. Information: Ext. 8-9085. HUP personnel: 662-7646.

**17 Ethernet for End Users;** 1-4 p.m. Through May 18.

**20 Intermediate Microsoft Word;** 9:30 a.m.-12:30 p.m.

**26 Excel Spreadsheets (Mac);** 1-4 p.m.

**27 Intermediate PC-DOS;** 9:30 a.m.-12:30 p.m.

### TALKS

**18 A Tale of Two Donors;** Norman Shumway, chief of cardiovascular surgery, Stanford University, and surgeon of the longest-surviving cardiac transplant patient; 6 p.m., Dunlop Auditorium, Medical Education Building (Medical School Government's Edward J. Stemmler Award Lecture).

### Open House: SAS Computing

The School of Arts and Sciences will dedicate its upgraded computing facility Wednesday, May 25, with an open house from 2 to 5 p.m. in its new home, on the 3rd floor of 3401 Walnut Street. All members of the University are invited to the dedication and reception. (Use the corner entrance near the Information Center, and take the elevator to the third floor.)

## Almanac

3601 Locust Walk, Philadelphia, Pa. 19104-6224  
(215) 898-5274 or 5275

The University of Pennsylvania's journal of record, opinion and news is published Tuesdays during the academic year and as needed during summer and holiday breaks. Guidelines for readers and contributors are available on request.

EDITOR Karen C. Gaines  
ASSOCIATE EDITOR Marguerite F. Miller  
EDITORIAL ASSISTANT Mary Corbett  
STUDENT ASSISTANTS April M. Alfarano,  
Catherine E. Clark, Mary A. Downes, Michelle Y. Holloway,  
Lisa A. Richardson  
ALMANAC ADVISORY BOARD Chair, Jean Crockett, F. Gerard Adams, David P. Balamuth, Robert Lucid, Michele Richman, Lorraine Tulman, for the Faculty Senate; William Epstein for the Administration; Carol Carr for the Librarians Assembly; John Hayden for the A-1 Assembly; Joseph Kane for the A-3 Assembly.