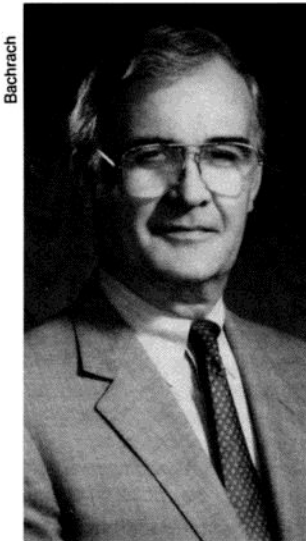


# Almanac

Tuesday, September 16, 1986

Published by the University of Pennsylvania

Volume 33, Number 4



Thomas Langfitt

## Acting at Glenmede: Dr. Langfitt

Dr. Thomas W. Langfitt, vice president for health affairs, has been appointed Acting President and CEO of the Glenmede Trust Company. Dr. Langfitt, the Charles Harrison Frazier Professor and Director of Neurosurgery, came to Penn in 1961 and has been vice president since 1973. He has been on the board of directors of Glenmede, one of the nation's largest trusts with \$3.4 billion in assets including the \$2.2 billion combined assets of the seven Pew Charitable Trusts set up since 1948 by the surviving children of Sun Oil Company Founder Joseph N. Pew. These seven trusts rank as the third largest foundation in the U.S.; in 1985 they committed \$139 million in grants in their areas of interest (education, health sciences, culture, human services, public policy, religion and conservation), with 32% of the commitments to local nonprofit groups, 63% to national ones and 5% international.

## First-Degree Murder Ruling in Student Death

One of the two men charged in the murder of Meera Ananthakrishnan last Thanksgiving in Graduate Towers has been convicted of first-degree murder.

Last Wednesday, 19-year-old George Stump of Harrisburg entered an open guilty plea to charges of murder, burglary, robbery, conspiracy, and possession of an instrument of crime. On Thursday, Philadelphia Court of Common Pleas Judge George Ivans ruled the crime deliberate and pre-meditated. The guilty plea puts sentencing in the hands of the judge rather than a jury and removes the option of death penalty the prosecution had asked.

Judge Ivans is expected to delay sentencing and call for a pre-sentence psychiatric profile. Jury selection is scheduled this week for a co-defendant, Charles Weatherbe of West Philadelphia, implicated in Stump's statement.

The body of Meera Ananthakrishnan, a 24-year-old first-year graduate student and popular TA in physics from India, was found by her Nichols House roommate on the Monday after Thanksgiving, 1985. Investigation established that she had been bound and stabbed the previous Thursday, November 28.

## Faculty Club: New Management Agreement with Penn

During the summer the Faculty Club's Board of Governors changed management firms—from the New York-based Restaurant Associates to the University itself.

The University, anticipating a plan for a new structure called the Hospitality Services Organization, took responsibility for food and bar services on June 28, according to Board President Margo Post Marshak, who is vice dean of the Law School.

David Cantor, manager since 1980 under the Restaurant Associates contract, has moved to the University staff. He has a dual reporting line, to the Board and to the University's designated operator of the agreement, Donald Jacobs.

Mr. Jacobs, who came to Penn in 1975 as director of Dining Service, is now titled Executive Director of Hospitality Services and heads an umbrella unit providing oversight and certain common services—nutrition, purchasing, controllership, and marketing—to various University operations that supply food. The Dining Service, with its student contract dining, conference catering and other enterprises, is now under an acting director, Bill Canney, who reports to Mr. Jacobs. Also in the structure are the Hilton Hotel services under Horizon, Inc.'s General Manager Mike Hobbs, and various automatic vending installations under Ed Diodata of Blue Ribbon Services. Scheduled to work with the Hospitality Services Organiza-

tion are the PennCetera services planned for 34th and Walnut and reporting to University Relations. The organizational chart shows a variety of relationships with only one hospitality unit, the Dining Service, as Penn self-operated.

"A key point in the Faculty Club's negotiations with the University this summer was to retain the autonomy of the Board with the responsiveness to the membership that an elected board ensures," Mrs. Marshak said. "This has the potential to create the best of both worlds—retention of the Club's individual character plus efficiencies of scale and the

all-important support of the University in maintenance and future improvements."

The new agreement calls for the University to front-end necessary renovations and improvements, "but the costs thereof shall be repaid to the University in accordance with a mutually agreed-upon amortization schedule from the combination of the excess in membership dues and assessments . . . and the operating surplus . . ." It also sets up the dual reporting line for the Club's manager and designates some personnel positions that can be altered only in consultation with the Board and House Committee. The Club's standing committees continue to set house rules and membership fees, and to sponsor Club activities such as art shows, lecture series, theme buffets and holiday dinners.

(NOTE: See also *Speaking Out* for a message from Mr. Jacobs.)



Don Jacobs



David Cantor

## INSIDE

- Senate Chair: To New Faculty, p. 2
- Athletics: New Structure, People, pp. 2-3
- Speaking Out: Faculty Club Changes, pp. 2-3
- Notices: UMIS, Penn-Leuven, 4-Liters, p. 3
- Update, CrimeStats, p. 4

**Pullout: United Way  
CRC's Penn Printout**

# SENATE

## From the Chair

### Welcome to New Faculty

All permanent teaching faculty of the University—technically called the standing faculty—are members of the Faculty Senate. I would like to provide for you a schema of the Senate functions, how it interacts with the administration and, most of all, what your role in this organization is and can be. If you come away with the impression that this is a recruitment pitch, you have correctly interpreted my message. We want your ideas, your points of view and most of all your effort on behalf of our committees. I welcome your comments throughout the year at the Faculty Senate Office which is located in Room 15 of College Hall, Ext. 6943. I and the Senate Staff Assistant, Carolyn Burdon, will be pleased to transmit your suggestions or viewpoints, or direct you, to the appropriate committee, organization or administrative office. Our role is to see that the University works for each faculty member.

A word about the origins of the Faculty Senate. It began during the McCarthy Era, more than 30 years ago, when faculties throughout the United States felt hard-pressed for the right to express ideas freely, even if unpopular, and to retain their jobs. Fortunately, at the University of Pennsylvania, the McCarthy climate did not take hold and faculty, administration and trustees agreed that there must be guarantees and safeguards for academic freedom. The Faculty Senate was created to provide a forum for discussion of any matter that the faculty felt significant and to provide a mechanism for faculty participation in University governance.

The manual of the Faculty Senate contains the rules by which it is governed. I encourage you to review this pamphlet. The Senate is recognized in the University Statutes as the body through which full-time teaching faculty may "discuss and express their views upon any matter that they deem to be of general interest to the faculty." They are empowered by the Statutes to "request reports from the University administration" and to "make recommendations directly to the President, Provost and the Trustees." The Senate meets at least twice yearly and in the interim the Senate Executive Committee (SEC) meets monthly and may at its discretion act on behalf of the Senate. Due to recent rules changes, SEC next year will consist of almost 50 members, primarily elected by constituency, three elected representatives of the Assistant Professors and the 6 elected officers, the present, past and elect Chairs and Secretaries. In addition, there are two independently elected committees and a series of committees elected by the Senate. The two are the Senate Committee on Academic Freedom and Responsibility and the Senate Committee on the Economic Status of the Faculty. The committees appointed by SEC deal with the Faculty, the Administration, *Almanac*, the Students and Educational Policy. SEC nominates the faculty representatives to all University Council committees and most bodies and proposes faculty liaisons to serve on the trustee committees. Become familiar with your SEC representative and I encourage you to communicate about any matters that you feel are important.

Some have viewed the Faculty Senate as a "sleeping elephant" ready to awake and act in times of crisis. This mechanism lies at the heart of the Senate's power. However, I take the view that the Senate's representatives, its officers and committees, have been elected and appointed to carry out an ongoing participatory function in University governance, providing needed balance and unique input into the decision-making process.

As the University has grown, it has evolved from small, intimate faculties where collegiality was the rule and where administrators were part-time appointments made from willing faculty, into a corporate structure in which the central administration may be separated by as many as three or four layers from the individual faculty members. Some schools of the University are larger than many liberal arts colleges elsewhere and are quite structured in their day-to-day operation. Administrators have largely become full-time professionals who specialize in their given field and are not involved in teaching. In short, through growth and in a quest for efficiency, the University has developed a structure resembling more an educational corporation in which the administrative and support staff can sometimes lose sight of the overall mission of the University: education and research. The University is the largest private employer in the Philadelphia metropolitan area, the 5th largest population area in the United States. When school is in session there are more than 40,000 people in the University community. It is easy to get lost, even as a faculty member. It is easy to feel that your views are unheard or unwanted. It is in this setting that I feel that the Faculty Senate and its committee system serve a more important function than ever before. It stands apart from but interacts with the administrative pyramid and serves as your representative in assisting you to communicate with the proper person and in presenting your views to the administration at the highest level if needed.

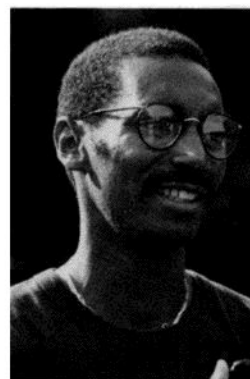
Communication by the Faculty Senate leadership with the President and Provost occurs formally on a bi-weekly schedule throughout the academic year. A consultation committee, consisting of the Chair-elect, the Chair and the Past Chair of the Senate meets with the President and Provost and at times with the leaders of the Undergraduate Assembly and the Graduate and Professional Student Association. This system works well and views are expressed confidentially and candidly. This system also provides continuity since each Senate officer has a three-year overlapping term of office.

In closing, I wish you all successful careers and much happiness at the University of Pennsylvania. The Faculty Senate stands eager to receive your help and ready to provide assistance if needed.

*Robert D. Soloway*



Carolyn Schlie



Denis Cochran-Fikes

### Athletics: New People and Structures

The promotion of Carolyn Schlie as Senior Associate Director, and the return of alumnus Denis Cochran-Fikes from Harvard as one of three Associate Directors, are among changes announced this month by Athletic Director Paul Rubincam.

A new post, Director of Supportive Services, will be filled by Larry Lauchle, who has been head wrestling coach for 16 years. Succeeding him as head coach will be Roger Reina, a 1984 alumnus who has been assistant coach. At 24, Mr. Reina is believed to be the youngest head coach in Division I wrestling.

Newly promoted to Associate Director is Skip Jarocki, assistant director since 1983. Continuing his liaison role with admissions and financial aid, Mr. Jarocki will be in charge of

continued past insert

### Speaking Out

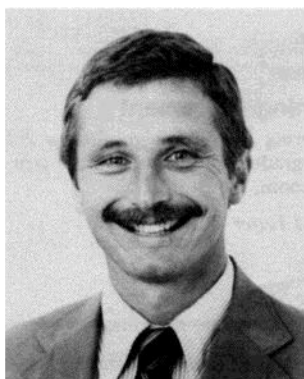
#### Faculty Club Changes

On June 28, 1986, following lengthy negotiations with the Faculty Club's Board of Governors the University took over responsibility for the Club's operations from the outside contractor who had been operating the club for the past five years. Most of the contractor's employees, including Director David Cantor, wished to remain at the University and have done so. One exception, the Chef has been replaced by the exceptionally talented and well known Charles Lotka. Mr. Lotka is a graduate of the famous Culinary Institute of America and most recently served as Chef at Bookbinders on 15th Street. Judith Callahan has accepted a partnership in an exciting new venture and leaves for her new challenge this week. To preserve continuity, Mary C. Bellerose, recently food service director for Service America's dining operation at the National Fire Protection Association in Quincy, Massachusetts, will be acting associate during the search.

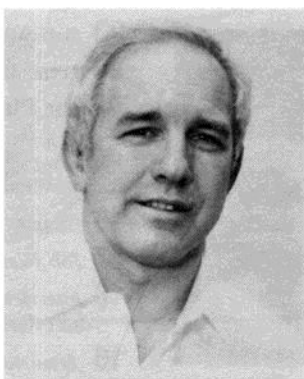
Over the past twelve years as Director of Dining Services, I, along with members of our management team, had been asked to look at various phases of the Club's financial operation. As the financial position of the Dining Service improved and the operations became more stable, we became confident in our ability to improve the Faculty Club's position as well. Having had the opportunity to take a closer look at the operations in

continued past insert

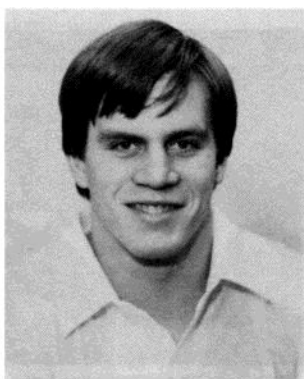




*Skip Jarocki*



*Larry Lauchle*



*Roger Reina*

Big 5/Palestra activities with oversight of men's and women's basketball, field hockey, volleyball, wrestling, and men's and women's lacrosse and crew.

Rejoining the University as Associate Director is Denis Cochran-Fikes, who took his Penn B.A. in political science in 1974 and his M.B.A. in 1979, then served as director of W.E.B. DuBois College House and as Judicial Inquiry Officer. At Harvard since 1982 he carried administrative liaison for 13 sports, directed athletic facilities usage for the Harvard community, and coached Women's Cross Country to a 14-0 record with two Ivy and Heptagonal championships. A member of the U.S. National Track and Field Teams in two of his undergraduate years, Mr. Cochran-Fikes set numerous records; six remain unbroken including a 3:55.0 mile that is the fastest by an Ivy athlete. At Penn he will handle eligibility requirements

and monitor the academic progress of student-athletes; administer the programs in soccer, lightweight football, baseball, softball, gymnastics, men's and women's cross country, track, swimming, fencing, and tennis; and be facilities liaison to Franklin Field.

Mr. Lauchle's new position in Supportive Services includes facility set-up for intercollegiate competition, supervision of Hutchinson Gym and other recreational facilities, and coordination of facilities renovations. The former national champion (Pittsburgh, 1961) and member of the 1960 and 1964 Olympic wrestling teams will continue to assist and advise in the wrestling program now headed by Mr. Reina. Also added to that program is a new strength coach, Charles J. Packman, a Lafayette alumnus who was owner-director of Doylestown Nautilus for the past four years.

## UMIS Reorganization

The Office of University Management Information Services (UMIS) reorganized the Applications Development area during June and July. This has resulted in the following assignments:

Joseph Penderghest—Director of Applications Development  
Fred Anzide Group Manager of Human Resources/Payroll Systems  
Ronald Cohen—Group Manager of Student Systems  
Nancy Rauch—Group Manager of Financial Systems

If this causes some confusion about whom you should contact within UMIS, I suggest you start with Joe Penderghest (Ext. 6417). We are confident that this change in organization and assignments will improve our services. We ask your cooperation in working with the new group managers.

—Larry White  
*Executive Director, UMIS*

## Penn/Leuven Exchange

Applications are invited from all faculty interested in participating in Pennsylvania's exchange with the Katholieke Universiteit Leuven (KUL) in Belgium. Roundtrip economy airfare and a modest *per diem* are provided for teaching and research visits of at least one month and not more than one semester. Knowledge of Dutch is not required. A faculty host at KUL must be identified. Application deadline for 1986-87 has been extended to October 15, 1986. Inquiries concerning later visits are welcome. For application form and information, please contact Dr. Joyce M. Randolph, Director, Office of International Programs, 133 Bennett Hall/6275, Ext. 4665/4661.

## Joining Four Liters Club

The University is inviting membership in a new club, the Four Liters Club. Faculty, staff and students are eligible to join. To qualify, you must have given at least eight units (pints) of blood to the American Red Cross. Or, you may earn membership in the future by giving a total of eight units. You may also add to your partial record.

The club is unique at Penn. It was established to give special credit to blood donors who have achieved such a record and to encourage others to build toward that goal.

There will be at least one recognition party each year to which all members will be invited for fun, fellowship and recognition. If you qualify or if you are interested in the Club, please send your name and campus address to me at Community Relations, 1233 Blockley Hall, 418 Service Drive (Ext. 3565). If your record is already complete, you will receive a membership card and will be invited to the first recognition event this fall. —Jim Robinson, Director  
*Community Relations*

## Medical Students Blood Drive

Students at the School of Medicine are sponsoring a Red Cross Blood Drive on Thursday, September 18, from noon to 5 p.m. in the Student Lookout of the Medical Education Building. For more information, call 299-4092.

July and August, I know we will be able to bring costs in line while maintaining excellent quality of food and services. Since summer months are not representative, we have been unable to judge potential sales and we will study our September experience to develop these judgments. But we are positive that the financial problem is not costs; rather it is daily sales. If we are going to improve the Club's financial health, we must attract greater numbers of regular customers to the cafeteria and to the Hour Glass room; we must attract them based on the merits of food, service, price/value relationship and social interaction.

Currently, and for the next twelve to eighteen months, catering sales are and must continue to be a strong financial sales base. Beyond eighteen months, however, and for the foreseeable future the financial base must be built with daily food sales to the Club members and guests. University subvention, small now and quickly shrinking, is not an option. The Club must operate and break even based on its appeal to the community it serves.

The first-year goals are very modest. We hope to serve three hundred members daily in the cafeteria who will spend an average of \$4.15 each for lunch. We must simply stabilize catering services and the Hour Glass sales. We hope to attract some extra sales by offering special events, carry-out and take home food. These modest sales goals will allow us to operate within budget this year.

If the Club is doing well, and we hope to do so by December, we will generate a surplus to improve the appearance of the cafeteria and to change the line flow. The space in the cafeteria area currently can accommodate more than 600 daily luncheon patrons, but the present arrangement severely restricts our capabilities. We have lots of ideas, from opening a quasi health club in the basement for members to becoming part of the information technology and a center at Penn. The Club must generate its own income and the payback potential. That is our first, foremost and primary challenge.

I have turned over former responsibilities as Dining Service Director to my Associate Bill Canney and I have accepted the position as Hospitality Services' Executive Director so that I can and will give more time to the Club. I would appreciate your comments, and suggestions. I plan to be in the Club as often as possible.

Please let me know your thoughts because your feedback will help us identify the changes we need to make. We welcome comments and criticism both from those of you who use the Club and those of you who haven't yet. I can be reached at 727 Franklin Building, Ext. 9457. Together we can build a Faculty Club at Penn that will be appreciated and enjoyed by the entire community.

—Donald Jacobs, Executive Director,  
*Hospitality Services*

# Update

SEPTEMBER ON CAMPUS

**Correction:** In the September pullout calendar, the date for the *St. Elsewhere* episode, which was shot in part on the Penn campus, was incorrect. The correct date is *September 24*, at 10 p.m. on NBC.

## FITNESS/LEARNING

### Human Resources/Training

The Training and Development Center offers the following courses this week:

**18** *New Employee Orientation.*

**22** *Introduction to Weight Watchers at Work.*

**23** *The Penn Supervisor.*

*What are those Spots? Diseases and Accidents of Childhood.*

**24** *Saving for Your Future.*

Pre-registration is required. Information: Ext. 3400.

### Information Services Center (UMIS)

Training classes will be held in the Franklin



*Edward Scultz on flute and Karin Fuller on harp perform in the first program of this season's Concert and Croissants series, 11:30 a.m., September 28, at the University Museum. Tickets: \$8.50.*

Building, 9:30-11:30 a.m. Registration is required. Information: Ext. 5063.

**16** *Introduction to Lotus Spreadsheet.*

**17** *Planning for Office Automation.*

**18** *Introduction to DOS.*

**19** *Introduction to Computers.*

## Department of Public Safety Crime Report— Week Ending Sunday, September 7

The following report includes a weekly count of all reported crimes on campus, a listing of all reported crimes against the person(s), as well as the campus area where the highest amount of crime has occurred that week with a listing of those crimes.

### Total Crime

\*Crimes Against the Person—3, Burglary—4, Theft—24, Theft of Auto—1, Criminal Mischief—2, Trespass—0

*9-3-86	1:13 AM	3900 blk. Walnut	2 males assaulted/taken to student health/actors fled
*9-5-86	12:16 PM	Harnwell House	Indecent assault by acquaintances
*9-5-86	9:37 PM	Veterinary Hospital	Cash box with cash taken. Weapon used/actors fled.

### Area/Highest Frequency of Crime

Date	Time Reported	Location	Incident
<b>Spruce St. to Locust St., 38th St. to 39th St.</b>			
9-2-86	4:11 PM	Harnwell House	Secured bike taken from rack. Lock and chain cut.
9-5-86	12:16 PM	Harnwell House	Indecent assault by acquaintances.
9-5-86	1:31 PM	Harnwell House	Secured bike taken from rack.
9-5-86	8:22 PM	Harnwell House	Cash taken from room/no forced entry.
<b>Spruce St. to Locust Walk, 34th St. to 36th St.</b>			
9-2-86	11:36 AM	Houston Hall	Womens Center I.D. sign taken.
9-2-86	3:20 PM	Williams Hall	Actor going thru drawer/wallet found opened/actor fled.
9-2-86	3:41 PM	Houston Hall	Unattended wallet taken from unsecured lounge.
<b>Spruce St. to Locust Walk, 36th St. to 37th St.</b>			
9-1-86	10:37 AM	Steinberg/Dietrich	Secured bicycle taken from rack.
9-2-86	3:55 PM	Steinberg/Dietrich	Unattended wallet taken from unsecured office.
9-3-86	12:15 PM	Steinberg/Dietrich	Wallet taken from unattended briefcase/room left open.
<b>Walnut St. to Locust Walk, 39th St. to 40th St.</b>			
9-3-86	1:13 AM	3900 blk. Walnut	2 males assaulted/taken to student health/actors fled.
9-3-86	11:14 AM	High Rise North	Secured bike taken from bike rack.
9-5-86	12:34 PM	High Rise North	Motor bike taken from parking space without authorization.
<b>Spruce St. to Locust Walk, 39th St. to 40th St.</b>			
9-1-86	11:02 AM	Van Pelt House	Personal items taken from secured locker/lock compromised.
9-4-86	2:26 PM	Harrison House	Secured bike taken from rail.

**Safety Tip:** Keep your doors and windows locked, even if you are out of your dorm for a few minutes. Know who is at your door before you open it. Utilize peep holes, never admit a stranger. If you return to your dorm, after even a brief absence, and you think it has been entered, do not go in. Call Campus Police at 511 or 898-7333.

**23** *Soft-Switch.*

**24** *Lotus Macros.*

### Career Planning/Placement

CPPS is offering *Get Ready to Find a Job Workshops* for graduate students, noon-1 p.m., Bishop White Room, Houston Hall.

**16** *Resume and Letter Writing.*

**17** *Job Hunting.*

**18** *Interviewing Skills.*

Also offered for graduate students:

**16** *How to Use On-Campus Recruiting*, 4:30 p.m., Benjamin Franklin Room, Houston Hall. Through September 17.

**22** *Graduate Students talk to Graduate Students—part of Building the Foundations of your Academic Career*, 4:30, Benjamin Franklin Room, Houston Hall. For New M.A. and Ph.D. students.

**23** *Advice from Faculty in the Humanities—part of Building the Foundations of your Academic Career*, noon, Room 245, Houston Hall. For New M.A. and Ph.D. students.

## MUSIC

### WXPN Concert Series

The first in a series of WXPN concert events will take place in the lower level of the Gold Standard. Concert begins 8:30 p.m. Admission: \$6. Information: 387-5401 or 387-7769.

**19** *Tracy and Peter Schwartz*, featuring cajun and traditional songs on fiddle, guitar, accordion and harmonica, and *Susan Piper*, a Philadelphia-based singer and guitarist.

## TALKS

**17** *Traditional Jaina Views of Well-being*; M.A. Dhaky, associate director for research, Center for Art and Archaeology, American Institute of Indian Studies; 11 a.m.-1 p.m., Classroom 11, University Museum (Department of South Asia Regional Studies).

**22** *The House of Experiment in 17th Century England*; Steve Shapin, University of Edinburgh; 4-5 p.m., Alexander Vucinich Seminar Room, E.F. Smith Hall (History and Sociology of Science).

### Deadline

The deadline for the weekly calendar update entries is a week before the Tuesday of publication.

## Almanac

3601 Locust Walk, Philadelphia, Pa. 19104-6224  
(215) 898-5274 or 5275.

The University of Pennsylvania's journal of record and opinion is published Tuesdays during the academic year and as needed during summer and holiday breaks. Guidelines for readers and contributors are available on request.

EDITOR	Karen C. Gaines
ASSISTANT EDITOR	Marguerite F. Miller
EDITORIAL ASSISTANT	Mary Corbett
STUDENT ASSISTANTS	Catherine E. Clark, Mary A. Downes, Amy E. Gardner, Michelle Y. Holloway, Michael S. Markowitz, Leonard S. Perlman, Daniel B. Siegel
ALMANAC ADVISORY BOARD Chair	Lucienne Frappier-Mazur
	F. Gerard Adams, Dan Ben-Amos, Linda Brodkey, Jean Crockett, Michele Richman, Roger D. Soloway, Michael Zuckerman, for the Faculty Senate; ... William G. Owen for the Administration; ... Carol Carr for the Librarians Assembly; ... John Hayden for the A-1 Assembly; ... Joseph Kane for the A-3 Assembly.